

Manning

<http://www.manning.ca>

Welcome

'Land of the Mighty Moose!'

This friendly, vibrant community expands beyond the town boundaries to encompass the surrounding area. Although primarily economically-driven by Petroleum, Forestry, and Agriculture, the area also provides opportunity for tourism ventures, with an amazing natural recreational environment.



Area Overview

Manning is a picturesque town nestled beside the Notikewin River, in an area known as the Peace Country, within Northwestern

Alberta. The **Municipal District of Northern Lights**, which surrounds Manning, contains rolling hills and beautiful valleys of agricultural land, along with several rivers.

An area rich in natural resources, the community particularly thrives in the winter when the petroleum and forestry industries boom. In the spring, the area comes alive with agriculture.

Climate

Environment Canada measures the climate normals around Peace River. Based upon Manning's proximity to Peace River, those **climate normals** are utilized as an approximation.

Community Services

The **Family & Community Support Services (FCSS)** organization offers a variety of services for families in our area. Manning is also home to an Aboriginal Resource Centre.

Click [here](#) to view the online Community Directory.

Community Lifestyle

The residents of Manning and the Municipal District of Northern Lights enjoy a laid-back, recreation-filled lifestyle. There are always several activities to enjoy, whether in summer or winter. Consult the online **Community Directory for a comprehensive list of groups, organizations, and activities.**

The **Centennial Library** is a modern facility with over 10,000 books and up to date computer technology for the public use. The library is a member of the Peace Library System which assists in catering to the literary needs of all ages including those with special needs.



Manning has outstanding recreational facilities including a sports centre with arena and curling rink. A summer pool, tennis court, two outdoor rinks, family fitness centre, several ball diamonds and playgrounds are available for family outdoor and fitness activities.

The **Manning Wellness Association** - a non-profit society - operates a fitness centre in the basement of the Royal Canadian Legion building. Also, the **Manning Boxing Club** offer fitness sessions to compliment its competitive/non-competitive coaching.



The **Condy Meadows Golf Course** and Recreation Area is located 10 km north of the Town of Manning and features a 9-hole (grass green) course that is second to none. Pro shop on site, golf cart rental.



Condy Meadows also includes campsites that are equipped with power hookups, and a playground. Lion's campground is located in town - along the river - with power hookups. Water and sanitary dumping station available.

There are also three local day parks that are enjoyed by all ages: The Lion's Park, The Millenium Park and The Elks Park. These all offer playground equipment for children and picnic areas for the whole family.

A Walking Trail is located along the scenic Notikewin River and in the northwest quadrant of the town, with plans for additional walking trails.

Click [here](#) for more information about Sports & Recreation in Manning.

Economic Base

Industry Sector Profiles

Forest Sector

There are two forestry companies operating within the Municipal District of Northern Lights. Located north of town, Manning Diversified Forest Products Ltd. (MDFP) is an integrated value-added wood processing facility. On site are: a primary wood processing facility with an output of 100 million board feet annually; a planer mill; and a chipping facility, which enables supplying of chips to local pulp mills. Outputs include dimensional lumber and several value-added wood products such as decking, fencing and siding components. The mill employs over 150 people with an additional 100 seasonal jobs in the woodlands.



South of Manning is [Daishowa Marubeni International Ltd. \(DMI\)](#), a pulp mill that annually produces approximately 480,000 air dried metric tonnes of kraft pulp.

Oil & Gas Sector

There are several gas plants located in the Chinchaga area, northwest of Manning. Companies with operations in the area include:

[BP](#), [Apache Corporation](#), [Talisman Energy](#), and [Penn West Energy Trust](#) among others. These extraction companies are serviced by [several local companies](#) specializing in everything from construction to road building to wireline testing.

Agriculture Sector

Agriculture is also a large sector given the long days in the summer and the top quality soils found the area. Wheat, canola, oats, barley and peas are the primary crops produced in the region. There are also livestock operations consisting of beef, bison and elk. As well, many honey producers call Manning home. The area is also an important producer of forage seeds such as smooth brome and timothy.



Research Sector

Research activities also play a vital role in the local economy. Established by MDFP in 1993, the [Manning Forestry Research Fund \(MFRF\)](#) with a goal of "...sustainability of the social, cultural, and economic values in the Northwest boreal region of Alberta" contributes significantly to several projects in northwest Alberta.

Manning is also home to the [North Peace Applied Research Association \(NPARA\)](#), which primarily carries out research in the agricultural sector.

Contributions from MFRF and NPARA have recently lead to the development of an essential oil extractor facility known as the [Aurora Natural Products and Essential Oils Cooperative](#) in the Town of Manning. The facility's main source of material for extraction

comes from logging operations; branches from conifers are used to produce essential oils.

Currently there are also several other projects underway in the agriculture and health and wellness sector.

Tourism Sector

Situated along the [Deh Cho Travel Connection](#), Manning offers a lot to the recreational tourist. With three provincial parks nearby: [Notikewin](#), [Twin Lakes](#), and [Sulphur Lake](#), along with two private campgrounds (one in town, one at the golf course) there are plenty of amenities for the outdoorsperson.

Activities to experience in the region include: hiking, fishing, camping, golfing, water recreation, off-highway vehicle riding, canoe/kayaking. In the fall and winter there is hunting, ice fishing, snowmobiling.

For the historian, Manning is also home to the [Battle River Pioneer Museum](#) and the restored [Battle River Hospital](#)

Manning is a member of the [Mighty Peace Tourist Association](#). [Travel Alberta North](#) is also a great resource when looking at vacationing in northern Alberta.

Retail Sector

Manning enjoys a complete compliment of retail amenities, including two grocery stores, two pharmacies, as well as general merchandise and convenience stores. A valuable source for information on the retail sector is the [Manning & District Board of Trade](#).



Economic Facts

Market Research & Demographic Information Statistics Canada information is located at the end of this profile. Click [here](#) if you would like to view this information now.

Further In-depth Information

- [Municipal Profiles](#) developed by [Alberta's Ministry of Municipal Affairs](#)
- [Alberta Weekly Economic Highlights](#) developed by [Alberta Economic Development](#)
- [Alberta Economic Outlook](#) developed by [Alberta Economic Development](#)
- [Alberta Export and Trade](#) developed by [Alberta Economic Development](#)
- [Special Reports](#) developed by [Alberta Economic Development](#)
- [Tourism Reports](#) developed by [Alberta Economic Development](#)
- [Price Comparison Survey](#) - Completed by [Alberta Economic Development](#) in May 2004
- [Alberta Finance Statistics](#) also contains much information which may be useful.

Business Licensing and Development Permits

Town of Manning

Box 125
Manning, Alberta
T0H 2M0

Phone: 780-836-3606

Fax: 780-836-3570

Real Estate

Online real estate listings available at: [MLS.ca](#), [Exit Realty Discovery](#), [Century 21](#).

Still in development is a land inventory for the Town of Manning and the M.D. of Northern Lights. In the meantime if you have any questions about available land in the area you can contact the [Manning & Area Economic Development Society](#): (780) 836-3340.

Business Support Services

Several area companies service the primary and secondary industries of the region in a variety of capacities, examples of the services provided are:

Oilfield Construction/Maintenance	Road Building/Maintenance
Commercial & Industrial Fencing	Hot Shot
Insulators/Pilings	Logging/Rentals
Passports/Maps	Plumbing/Heating
Trucking/Hauling	Vacuum/Steam
Water Hauling	Wireline/Pressure Testing
Welding/Electrical	Equipment Rental

Financial Institutions

- [ATB Financial](#)
- [Caisse Horizon Credit Union](#)

Education

[Peace River School Division No. 10](#) is the Public School Division represented in Manning.

[Holy Family Catholic Regional Division #37](#) is the Separate School Division represented in Manning.

School	Location	Phone Number	Grades
Manning Elementary School	Manning	(780) 836-3532	K – 6
Paul Rowe Junior/Senior High School	Manning	(780) 836-3397	7 – 12
Dixonville School	Dixonville	(780) 971-3770	K - 9
Breaking Point School	Manning	(780) 836-3397	K – 11
Rosary School	Manning	(780) 836-3625	ECS - 9
Manning & District Further Education Council	Manning	(780) 836-2664	Adult

Emergency Services

The Manning & District Fire Department

Emergency Calls: 911

Serving the area for more than 40 years, the service area reaches from Manning, north to Keg River, east to the Peace River, west to the BC border, and south to Dixonville. Fire coverage is approximately 2800 km², and rescue coverage area is approximately 19,000 km². Local volunteer members possess the ability to extinguish fires efficiently, extricate occupants from motor vehicle accidents, and currently are developing techniques for water rescue.

Ambulance Service

Emergency Calls: 911

Based out of the Manning Community Health Centre, the town of Manning has advanced life support ambulance services operated by Peace Country Health.

Royal Canadian Mounted Police

Emergency Calls: 911

Non-emergency: 780-836-3769

This three member detachment is responsible for Manning and a sizable surrounding area.

Health Care

Manning and area residents celebrated the opening of a new health care facility in July 2003.

Manning Community Health Centre, administered by the Peace Country Health Region, employs approximately 115 people. Our new health facility offers 24-hour emergency care, 10 acute care beds, 16 long term care beds and 1 palliative care room. Click [here](#) for more in-depth information about the Manning Community Health Centre.



Senior
C
H

M
is
pr
to
ha
a



modern

44-bed senior citizen's lodge. Recently expanded and renovated, the Del-Air Lodge is situated on the banks of the Notikewin River.

Key Contacts for Business Development

Manning & Area Economic Development Society (MAEDS)

Box 846

Manning, Alberta

T0H 2M0

Phone: 780-836-3340

Fax: 780-836-3342

Scott Kelly

Economic Development Officer

Town of Manning

Box 125

Manning, Alberta

T0H 2M0

Phone: 780-836-3606

Fax: 780-836-3570



Alberta Economic Development

Room 105 Provincial Building
9621-96 Avenue
Peace River, Alberta
T8S 1T4
Tel: 780-624-6114
Fax: 780-624-6490
[Michael Cheeks](#)
Regional Manager

Back to [Directory](#)

Provincial

Mr. Frank Oberle (PC)
MLA for Peace River

Constituency Office
P.O. Box 6299
10003 - 99 Avenue
Peace River, AB
T8S 1S2
Phone: (780) 624-5400
Fax: (780) 624-5464
peace.river@assembly.ab.ca

Legislature Office
513 Legislature Building
10800 - 97 Avenue
Edmonton, AB
T5K 2B6
Phone: (780) 427-1843
Fax: (780) 427-1835

Federal

Member of Parliament-Peace River, Alberta
Warkentin, Chris (Conservative)

Parliamentary Address
House of Commons
Ottawa, Ontario
K1A 0A6
Telephone: (613) 992-5685
Fax: (613) 947-4782
E-Mail: Warkentin.C@parl.gc.ca

Constituency Address
207 - 10605 West Side Drive
Grande Prairie, Alberta
T8V 8E6
Telephone: (780) 538-1677
Fax: (780) 538-9257

Location

The Town of Manning is located within the Municipal District of Northern Lights No. 22 on the Mackenzie Highway #35. The town is situated 99 km northwest of the Town of Peace River and roughly 250 km northeast of the City of Grande Prairie, and just under 600 km northwest of Edmonton.



Click [here](#) or on the map above to explore the comprehensive interactive map developed by [Northern Alberta Development Council \(NADC\)](#)

Post Secondary Education

[Northern Lakes College](#) has a campus located in Manning. The college offers the following programs:

- University Transfer Programs
- Career Programs
- Workforce Development
- Academic Upgrading Programs
- Community Learning Services



The [Northern Alberta Institute of Technology \(NAIT\)](#) has a campus located in Fairview which is located approximately 1.5 hours southwest.



[Grande Prairie Regional College](#) is located in Grande Prairie approximately 2.5 hours southwest.

[Athabasca University](#) is Canada's leading Open University. It focuses on the delivery of courses and programs by distance and online methods. Registration is year-round and anyone 18 years of age or older is eligible to apply.

- Three Year and Four Year Degrees
- Graduate and Undergraduate Programs
- Diploma Programs



- Certificate Programs
- University Transfer Programs
- Student Services Back to [Directory](#)

Taxation

Assessment [2005]

\$61,748,710

Mill Rates [2005]

	Residential	Non-Residential
General Municipal	9.6760	9.6760
Education	4.6423	7.0503
Seniors Lodge	.2762	.2762
Total	14.5945	17.0025

There is **No Provincial Sales Tax (PST)** in Alberta. There is a 6% Goods and Services Tax (GST) on most purchases in Canada.

Transportation

Air Service

The Manning Airport is located 3 km north of the town and is owned and operated by the Municipal District of Northern Lights. The airport is used for general aviation of all aircraft up to Code 3 designation/category (which use Instrument Flight Regulations and Visual Flight Regulations). There is also a terminal constructed to accommodate passenger flights.

Radio controlled runway lighting (ARCAL) has been installed to save on power costs. These lights remain off until an aircraft arrives and the pilot then switches on the lights using the aircraft's radio. The lights stay on for approximately 20 minutes before shutting off automatically.

The airport is also home to a provincial forestry tanker base for fire suppression operations. Medivac services are also strong users of the airport.

The nearest airport with passenger service is in [Peace River](#). [Grande Prairie Airport](#) has expanded passenger service.

Rail Transport

Manning is serviced by [CN Rail](#). Click [here](#) for a map of all Alberta Railways.

Highways

The Mackenzie Highway (Highway 35) is the major route north/south through Manning.

There are several Secondary Routes with in the surrounding M.D. of Northern Lights, most notable route 986 - which connects with Highway 88 to the east, south of Red Earth Creek.

Click [here](#) for traffic counts. Traffic counts for inside the Town of Manning can be found on page 63 and 121. (Look for NthL abbreviation) Other traffic counts within the M.D. Northern Lights can be found on pages: 62, 63, 121, 123, 124, 151.

Distances to Major Centres

Peace River	99 km
Grande Prairie	250 km
Fort St. John	315 km

Edmonton	600 km
Calgary	880 km
Vancouver	1450 km
U.S. Border	1195 km

Passenger Bus Service

Greyhound Canada operates daily scheduled passenger and parcel express service to Peace River, Grande Prairie, and Edmonton.

Taxi, Transportation/Courier Services

Courier businesses such as DHL and Purolator and are also located in Manning. There are also Hot Shot services available.

Utilities

Electrical Power:	Direct Energy Services
Natural Gas:	Town of Manning
Water/Wastewater:	Town of Manning
Waste Management:	Town of Manning

Communication/Media

Cable Television:	Persona Communications (local TV Guide)
Satellite Television:	Star Choice
	Bell ExpressVu
Telephone:	Telus Communications (land-line and mobile)
Internet Services:	Telus Communications

Local/Regional Newspapers

Name	Phone Number
The Banner Post	(780) 836-3588

Radio Stations

Name	Phone Number	Fax Number
KIX 106	(800) 610-3610	(780) 624-5424
YL Country	(800) 610-3610	(780) 624-5424

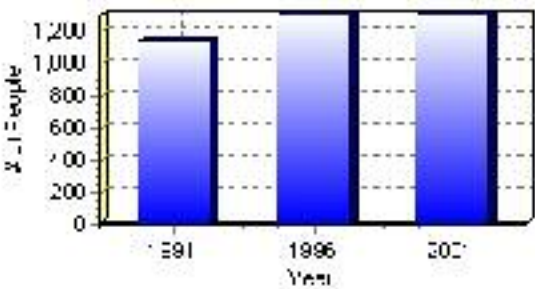
Population

Total Population

Population 2004*	1,293
Population 2003*	1,293
Population 2002*	1,293
Population 2001**	1,290
Population 2000*	1,295
Population 1996**	1,295
Population 1991**	1,139
Population % change 1991-1996	12.05%
Population % change 1996-2001	-0.15%

* Source: Official Population List, Alberta Municipal Affairs
** Source: Statistics Canada 1991, 1996, & 2001 Census

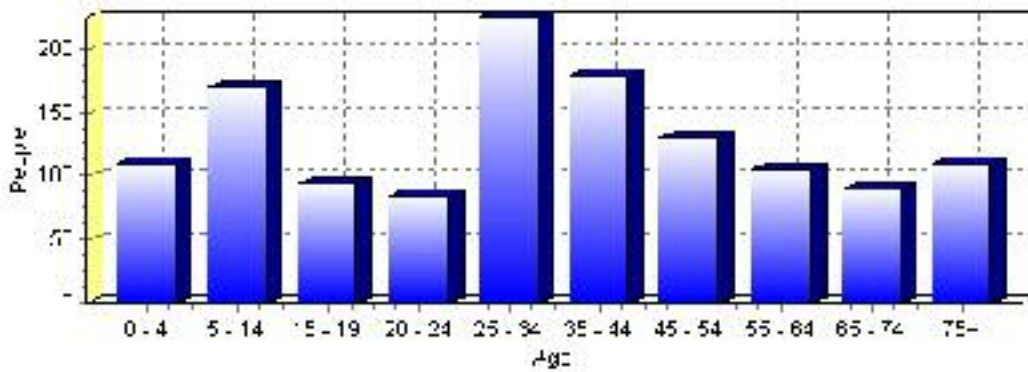
Total Population 1991-2001



Population by Age and Gender	1996 Male	1996 Female	1996 Total	2001 Male	2001 Female	2001 Total
Age 0 - 4	55	45	100	55	55	110
Age 5 - 14	105	110	215	90	80	170
Age 15 - 19	35	45	80	40	55	95
Age 20 - 24	65	50	115	40	45	85
Age 25 - 34	130	115	245	125	100	225
Age 35 - 44	90	75	165	90	90	180
Age 45 - 54	55	55	110	65	65	130
Age 55 - 64	55	40	95	55	50	105
Age 65 - 74	40	50	90	40	50	90
Age 75 and older	35	60	95	45	65	110
Total All Persons	655	640	1,295	645	645	1,290

Source: Statistics Canada 1996 & 2001 Census (numbers may not add up due to rounding)

Manning Population by Age Group (2001)

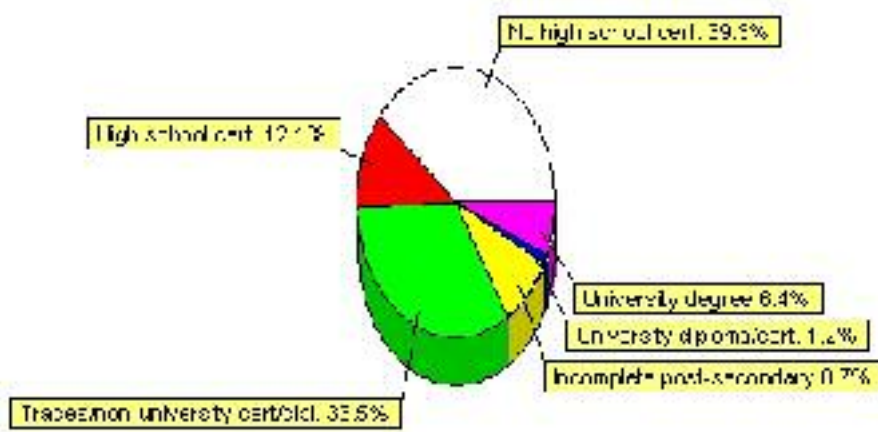


Education Statistics

Highest level of schooling for Population 20yrs and older	2001	%
People without high school certificates	340	39.31%
People with high school certificates	105	12.14%
People with trades or non-university certificate or diploma	290	33.53%
People with post-secondary education (not completed)	75	8.67%
People with university diploma/certificate	10	1.16%
People with university degree	55	6.36%
Total Population 20 years and older	865	100.00%

Source: Statistics Canada 2001 Census (numbers may not add up due to rounding)

Manning Highest Level of Schooling 2001



Population with Post Secondary Qualifications	1996	%	2001	%
Agriculture and biological sciences	30	10.91%	25	7.25%
Commerce, management and business administration	55	20.00%	55	15.94%
Educational, recreational and counseling services	40	14.55%	35	10.14%
Engineering and applied science tech. and trades	105	38.18%	115	33.33%
Engineering and applied sciences	0	0.00%	0	0.00%
Fine and applied arts	0	0.00%	25	7.25%
Health professionals, science and technologies	30	10.91%	25	7.25%
Humanities and related fields	0	0.00%	40	11.59%
Mathematics and physical sciences	10	3.64%	0	0.00%
Social sciences and related fields	10	3.64%	20	5.80%
Other and/or no specialization	0	0.00%	0	0.00%
Total people with post secondary qualifications	275	100.00%	345	100.00%
Females with post-secondary qualifications	130	47.27%	145	42.03%
Males with post-secondary qualifications	145	52.73%	200	57.97%

Source: Statistics Canada 1996 & 2001 Census (numbers may not add up due to rounding)

Labour Force

Labour force by activity	1996	2001
In the labour force, both sexes	625	690
Not in the labour force, both sexes	325	280
Total population 15 and over	950	970
Employed, both sexes	585	665
Unemployed, both sexes	40	25
Participation rate, both sexes	65.00%	71.00%
Unemployment rate, both sexes	6.00%	4.00%

Source: Statistics Canada 1996 & 2001 Census (numbers may not add up due to rounding)

Labour Force by Industry Division	1996	% of total	2001	% of total
Agriculture	30	4.92%	25	3.65%
Mining	40	6.56%	25	3.65%
Manufacturing	95	15.57%	105	15.33%
Construction	50	8.20%	60	8.76%
Transportation. & Utilities	50	8.20%	80	11.68%
Retail and Wholesale	105	17.21%	60	8.76%
Finance	15	2.46%	45	6.57%
Business & Community Services	160	26.23%	265	38.69%
Public Administration	20	3.28%	25	3.65%
Total All Industries	610	100.00%	685	100.00%

Source: Statistics Canada 1996 & 2001 Census (numbers may not add up due to rounding)

Manning Labour Force By Industry - 2001



Labour Force by Major Occupational Groups	1996	%	2001	%
Management occupations	50	8.20%	45	6.57%
Business, Finances and administrative occupations	70	11.48%	75	10.95%
Natural and applied sciences and related occupations	30	4.92%	10	1.46%
Health occupations	45	7.38%	10	1.46%
Occupations in social science; education; government and religion	25	4.10%	40	5.84%
Occupations in art; culture; recreation and sport	0	0.00%	10	1.46%

Sales and service occupations	130	21.31%	185	27.01%
Trades; transport; equipment operators and related occupations	130	21.31%	190	27.74%
Occupations unique to primary industry	30	4.92%	45	6.57%
Occupations unique to processing; manufacturing and utilities	95	15.57%	70	10.22%
Occupations not elsewhere classified	15	2.46%	0	0.00%
Total - All Occupations (major groups)	610	100.00%	685	100.00%
Females - All Occupations	235	38.52%	300	43.80%
Males - All Occupations	375	61.48%	385	56.20%

Source: Statistics Canada 1996 & 2001 Census (numbers may not add up due to rounding)

Income

Family Income (Number of Families)	1996	%	2001	%
less than \$19,999	25	9.62%	40	14.04%
\$20,000 - \$39,999	90	34.62%	70	24.56%
\$40,000 - \$59,999	50	19.23%	80	28.07%
\$60,000 and over	95	36.54%	135	47.37%
Total number of families	260	100.00%	325	114.04%
Average family income	\$57,904		\$65,457	
Median family income	\$53,472		\$57,117	

Source: Statistics Canada 1996 & 2001 Census (numbers may not add up due to rounding)

Household Income (Number of Households)	1996	%	2001	%
less than \$19,999	95	20.43%	105	21.43%
\$20,000 - \$39,999	135	29.03%	80	16.33%
\$40,000 - \$59,999	90	19.35%	105	21.43%
\$60,000 and over	40	8.60%	180	36.73%
Total number of households	465	100.00%	490	100.00%
Average household income	\$49,997		\$58,579	
Median household income	\$40,045		\$50,718	

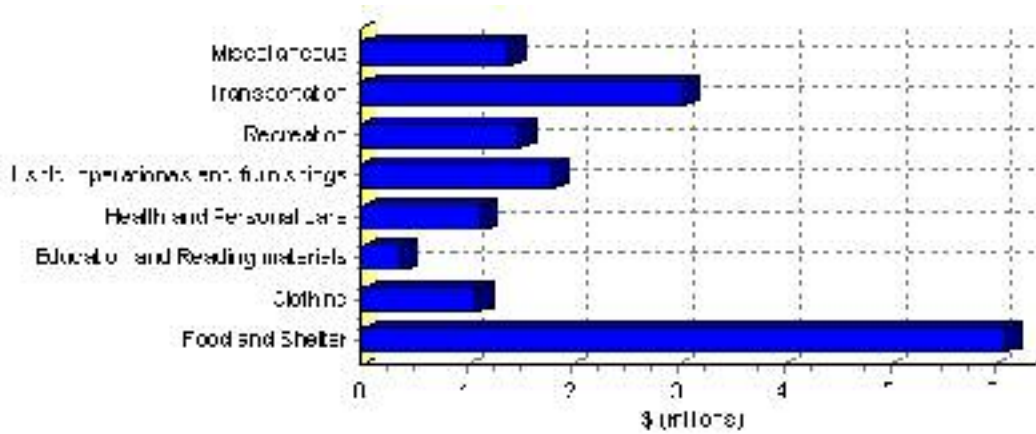
Source: Statistics Canada 1996 & 2001 Census (numbers may not add up due to rounding)

Family Expenditure

Expenditure Category	1992	% of total	1996	% of total
Food and Shelter	\$4,411,035	38.15%	\$6,108,141	37.03%
Clothing	\$764,545	6.61%	\$1,103,271	6.69%
Education and Reading materials	\$231,065	2.00%	\$377,725	2.29%
Health and Personal care	\$726,535	6.28%	\$1,129,542	6.85%
Hshld. operations and furnishings	\$1,271,330	11.00%	\$1,818,024	11.02%
Recreation	\$908,095	7.85%	\$1,493,979	9.06%
Transportation	\$2,337,755	20.22%	\$3,050,789	18.50%
Miscellaneous	\$904,490	7.82%	\$1,411,912	8.56%
Total Current Consumption	\$11,562,015	100.00%	\$16,493,383	100.00%
Total # of Households	440		464	
Average Consumption per Household	\$26,277		\$35,546	

Source: Statistics Canada Family Expenditure Survey 1992 & 1996 (numbers may not add up due to rounding).

Manning Family Expenditures (1996)

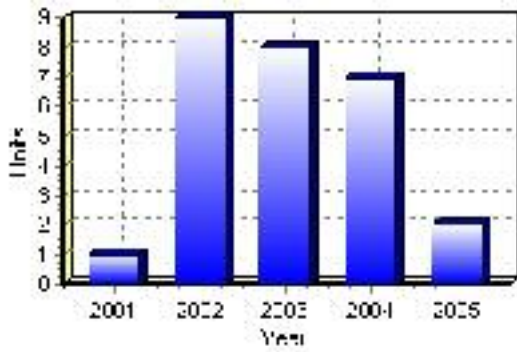


Building Permits

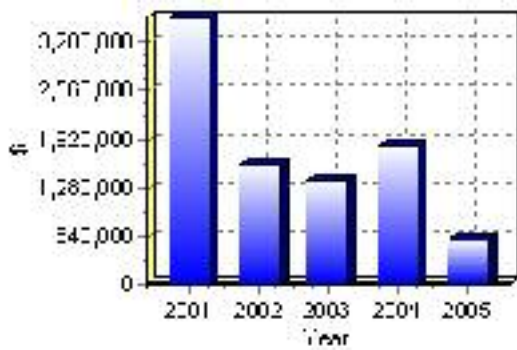
Total Building Permit Values	2001	2002	2003	2004	2005
Building Permits Value, Commercial	\$225,000	\$295,000	\$30,000	\$680,000	\$76,000
Building Permits Value, Industrial	\$60,000	\$0	\$0	\$0	\$0
Building Permits Value, Institutional	\$3,100,000	\$60,000	\$220,000	\$0	\$125,000
Building Permits Value, Residential	\$141,000	\$1,242,000	\$1,135,000	\$1,151,000	\$389,000
Building Permits Value, Total	\$3,526,000	\$1,597,000	\$1,385,000	\$1,831,000	\$590,000
Total Housing Starts	1	9	8	7	2

Source: Statistics Canada 2000-2004 Building Permits (numbers may not add up due to rounding)

Total Housing Starts



Value of Building Permits



Dwellings

Occupied Private Dwellings by Type	1996	% of total	2001	% of total
Apartments	20	4.30%	30	6.12%
Detached Duplexes	0	0.00%	10	2.04%
Movable Dwellings	75	16.13%	90	18.37%
Other single attached house	0	0.00%	5	1.02%
Row and semi-detached house	35	7.53%	10	2.04%
Single-detached house	335	72.04%	335	68.37%
Total number of occupied private dwellings	465	100.00%	490	100.00%
Private dwellings, owned	325	69.89%	330	67.35%
Private Dwellings, rented	140	30.11%	160	32.65%

Source: Statistics Canada 1996 & 2001 Census (numbers may not add up due to rounding)

Private Dwellings by Period of Construction	# of Dwellings	% of total
Period of construction, before 1946	0	0.00%
Period of construction, 1946 - 1960	120	25.00%
Period of construction, 1961 - 1970	80	16.67%
Period of construction, 1971 - 1980	115	23.96%
Period of construction, 1981 - 1990	75	15.63%
Period of construction, 1991 - 2001	90	18.75%
Total number of private dwellings constructed	480	100.00%

Source: Statistics Canada 2001 Census (numbers may not add up due to rounding)

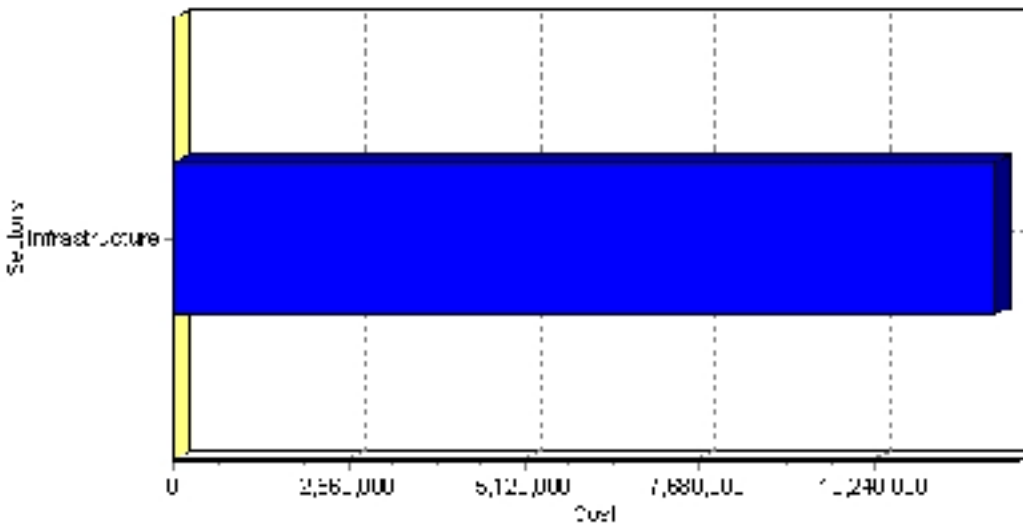
Projects

Summary of Projects in Manning as of September 2006

Project Sector	Number of Projects	Project Cost
Infrastructure	1	\$12,000,000
Total	1	\$12,000,000

This inventory lists projects in Alberta that have recently been completed, are under construction, or are proposed to start construction. Not all projects are listed due to reasons of confidentiality and/or due to information not being available at the time of printing. Project data is obtained from public information sources, where possible, this data has been verified with the project proponent/developer, users of the Inventory may wish to confirm project data with the proponent/developer. The inventory does not breakdown project expenditures by any given year. The cost of a project is the value of expenditures expected over all phases of project construction, which may span over two or more years. Cost of projects listed in the Inventory are estimated values only. Source: Alberta Economic Development, 2004.

Value of Projects by Sector (as of September 2006)



Project Status	Number of Projects	Project Cost
Under Construction	1	\$12,000,000
Total	1	\$12,000,000

This inventory lists projects in Alberta that have recently been completed, are under construction, or are proposed to start construction. Not all projects are listed due to reasons of confidentiality and/or due to information not being available at the time of printing. Project data is obtained from public information sources, where possible, this data has been verified with the project proponent/developer, users of the Inventory may wish to confirm project data with the proponent/developer. The inventory does not breakdown project expenditures by any given year. The cost of a project is the value of expenditures expected over all phases of project construction, which may span over two or more years. Cost of projects listed in the Inventory are estimated values only. Source: Alberta Economic Development, 2004.

Largest Projects in Manning as of September 2006

Company Name	Project Description	Project Location	Project Cost	Construction Schedule	Status
MD of Northern Lights / Town of Manning	Regional Water Supply System	Manning	\$12,000,000	2005-2007	Under Construction

Disclaimer: Information in this profile has been provided from a variety of external sources. Although every effort has been made to ensure the accuracy, currency and reliability of the content and data, AlbertaFirst.com Ltd. accepts no responsibility in this regard.

© AlbertaFirst.com Ltd., 2006.