

## Key Contacts for Business Development

website: [Smoky River Region](#)

### **Provincial:**

Hector Goudreau  
Member of the Legislative Assembly (MLA)  
#513 Legislature Building  
10800-97 Avenue  
Edmonton AB  
T5K 2B6  
Tel: 780-415-9421  
Fax: 780-427-1835

### Constituency Office:

P.O. Box 1054  
031- 1st Avenue SW  
Falher AB  
T0H 1M0  
Tel: 780-837-3846  
Toll Free: 1-866-835-4988  
Fax: 780-837-3849

### **Federal:**

Chris Warkentin  
Member of Parliament (MP)  
Peace River Constituency  
House of Commons  
Ottawa, Ontario  
K1A 0A6  
Tel: 613-992-5685  
Fax: 613-947-4782

### Constituency Office:

207 - 10605 West Side Drive  
Grande Prairie AB T8V 8E6  
Tel: 780-538-1677  
Fax: 780-538-9257

E-mail: [warkentin.c@parl.gc.ca](mailto:warkentin.c@parl.gc.ca)

Website: [www.chriswarkentin.ca](http://www.chriswarkentin.ca)

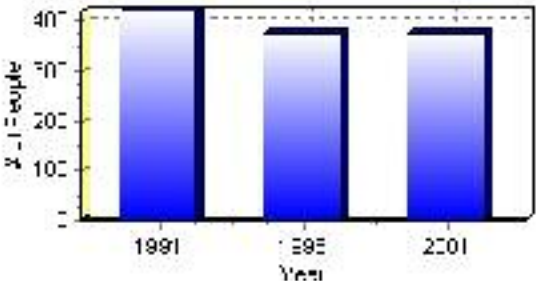
# Population

## Total Population

Population 2004*	377
Population 2003*	377
Population 2002*	377
Population 2001**	380
Population 2000*	403
Population 1996**	375
Population 1991**	421
Population % change 1991-1996	-12.27%
Population % change 1996-2001	0.53%

\* Source: Official Population List, Alberta Municipal Affairs  
\*\* Source: Statistics Canada 1991, 1996, & 2001 Census

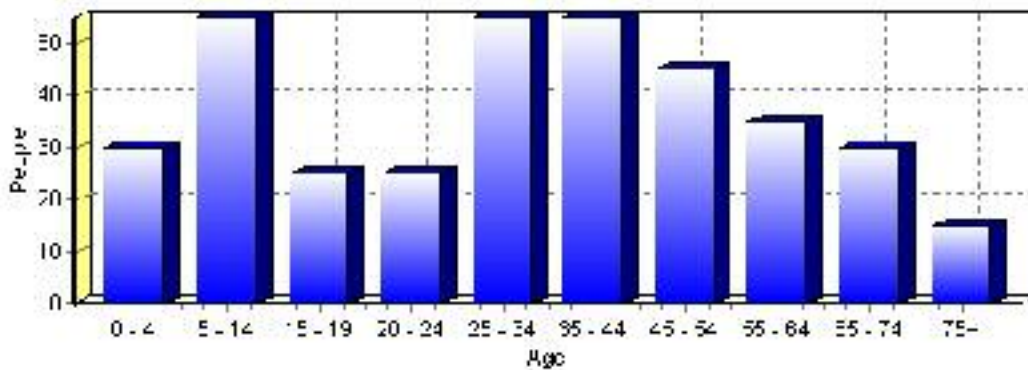
## Total Population 1991-2001



Population by Age and Gender	1996 Male	1996 Female	1996 Total	2001 Male	2001 Female	2001 Total
Age 0 - 4	10	15	25	10	20	30
Age 5 - 14	25	35	60	30	25	55
Age 15 - 19	15	15	30	10	15	25
Age 20 - 24	15	15	30	10	15	25
Age 25 - 34	30	30	60	25	30	55
Age 35 - 44	30	25	55	30	25	55
Age 45 - 54	15	10	25	30	15	45
Age 55 - 64	20	15	35	20	15	35
Age 65 - 74	20	20	40	15	15	30
Age 75 and older	5	15	20	5	10	15
Total All Persons	175	195	370	180	200	380

Source: Statistics Canada 1996 & 2001 Census (numbers may not add up due to rounding)

### Donnelly Population by Age Group (2001)

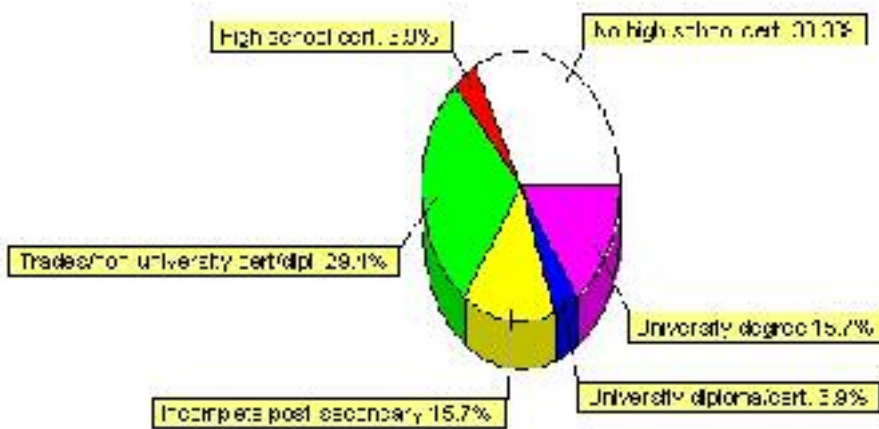


# Education Statistics

Highest level of schooling for Population 20yrs and older	2001	%
People without high school certificates	85	33.33%
People with high school certificates	10	3.92%
People with trades or non-university certificate or diploma	75	29.41%
People with post-secondary education (not completed)	40	15.69%
People with university diploma/certificate	10	3.92%
People with university degree	40	15.69%
Total Population 20 years and older	255	100.00%

Source: Statistics Canada 2001 Census (numbers may not add up due to rounding)

## Donnelly Highest Level of Schooling 2001



Population with Post Secondary Qualifications	1996	%	2001	%
Agriculture and biological sciences	0	0.00%	20	18.18%
Commerce, management and business administration	0	0.00%	15	13.64%
Educational, recreational and counseling services	30	30.00%	50	45.45%
Engineering and applied science tech. and trades	10	10.00%	25	22.73%
Engineering and applied sciences	0	0.00%	0	0.00%
Fine and applied arts	10	10.00%	0	0.00%
Health professionals, science and technologies	20	20.00%	10	9.09%
Humanities and related fields	0	0.00%	0	0.00%
Mathematics and physical sciences	0	0.00%	0	0.00%
Social sciences and related fields	10	10.00%	0	0.00%
Other and/or no specialization	0	0.00%	0	0.00%
Total people with post secondary qualifications	100	100.00%	110	100.00%
Females with post-secondary qualifications	65	65.00%	65	59.09%
Males with post-secondary qualifications	35	35.00%	45	40.91%

Source: Statistics Canada 1996 & 2001 Census (numbers may not add up due to rounding)

## Labour Force

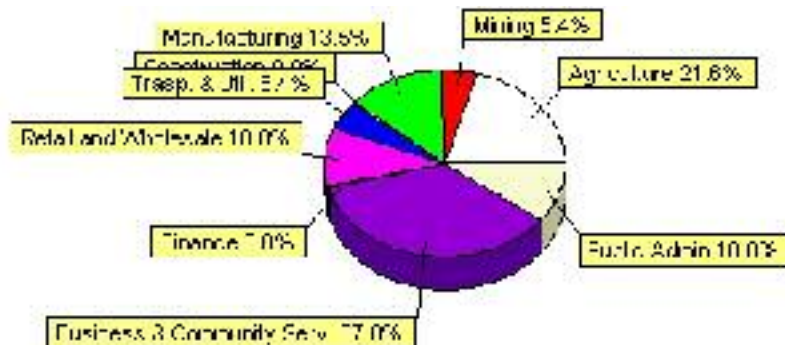
Labour force by activity	1996	2001
In the labour force, both sexes	185	180
Not in the labour force, both sexes	80	120
Total population 15 and over	270	300
Employed, both sexes	170	180
Unemployed, both sexes	10	10
Participation rate, both sexes	68.00%	60.00%
Unemployment rate, both sexes	5.00%	6.00%

Source: Statistics Canada 1996 & 2001 Census (numbers may not add up due to rounding)

Labour Force by Industry Division	1996	% of total	2001	% of total
Agriculture	10	5.41%	40	21.62%
Mining	0	0.00%	10	5.41%
Manufacturing	15	8.11%	25	13.51%
Construction	10	5.41%	0	0.00%
Transportation. & Utilities	0	0.00%	10	5.41%
Retail and Wholesale	40	21.62%	20	10.81%
Finance	0	0.00%	0	0.00%
Business & Community Services	85	45.95%	70	37.84%
Public Administration	0	0.00%	20	10.81%
Total All Industries	185	100.00%	185	100.00%

Source: Statistics Canada 1996 & 2001 Census (numbers may not add up due to rounding)

### Donnelly Labour Force By Industry - 2001



Labour Force by Major Occupational Groups	1996	%	2001	%
Management occupations	10	5.56%	10	5.56%
Business, Finances and administrative occupations	15	8.33%	35	19.44%
Natural and applied sciences and related occupations	0	0.00%	0	0.00%
Health occupations	20	11.11%	0	0.00%
Occupations in social science; education; government and religion	40	22.22%	30	16.67%
Occupations in art; culture; recreation and sport	0	0.00%	0	0.00%

Sales and service occupations	40	22.22%	20	11.11%
Trades; transport; equipment operators and related occupations	45	25.00%	15	8.33%
Occupations unique to primary industry	10	5.56%	45	25.00%
Occupations unique to processing; manufacturing and utilities	10	5.56%	15	8.33%
Occupations not elsewhere classified	0	0.00%	0	0.00%
Total - All Occupations (major groups)	180	100.00%	180	100.00%
Females - All Occupations	80	44.44%	85	47.22%
Males - All Occupations	100	55.56%	100	55.56%

Source: Statistics Canada 1996 & 2001 Census (numbers may not add up due to rounding)

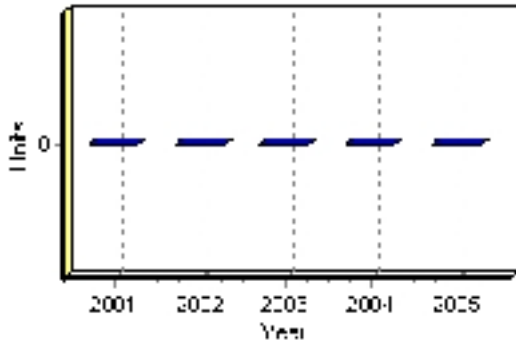
---

# Building Permits

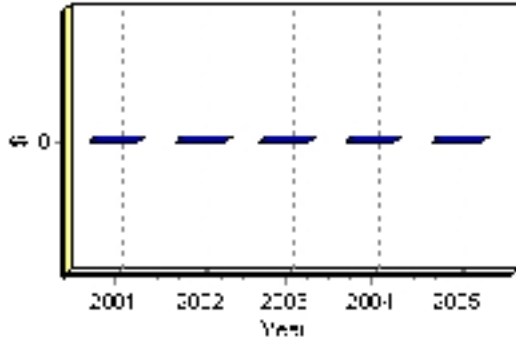
Total Building Permit Values	2001	2002	2003	2004	2005
Building Permits Value, Commercial	\$0	\$0	\$0	\$0	\$0
Building Permits Value, Industrial	\$0	\$0	\$0	\$0	\$0
Building Permits Value, Institutional	\$0	\$0	\$0	\$0	\$0
Building Permits Value, Residential	\$0	\$0	\$0	\$0	\$0
Building Permits Value, Total	\$0	\$0	\$0	\$0	\$0
Total Housing Starts	0	0	0	0	0

Source: Statistics Canada 2000-2004 Building Permits (numbers may not add up due to rounding)

## Total Housing Starts



## Value of Building Permits



## Dwellings

<b>Occupied Private Dwellings by Type</b>	<b>1996</b>	<b>% of total</b>	<b>2001</b>	<b>% of total</b>
Apartments	20	12.12%	10	6.67%
Detached Duplexes	0	0.00%	0	0.00%
Movable Dwellings	45	27.27%	0	0.00%
Other single attached house	0	0.00%	0	0.00%
Row and semi-detached house	10	6.06%	10	6.67%
Single-detached house	90	54.55%	125	83.33%
Total number of occupied private dwellings	165	100.00%	150	100.00%
Private dwellings, owned	110	66.67%	120	80.00%
Private Dwellings, rented	60	36.36%	25	16.67%

Source: Statistics Canada 1996 & 2001 Census (numbers may not add up due to rounding)

<b>Private Dwellings by Period of Construction</b>	<b># of Dwellings</b>	<b>% of total</b>
Period of construction, before 1946	0	0.00%
Period of construction, 1946 - 1960	15	10.00%
Period of construction, 1961 - 1970	10	6.67%
Period of construction, 1971 - 1980	65	43.33%
Period of construction, 1981 - 1990	50	33.33%
Period of construction, 1991 - 2001	10	6.67%
Total number of private dwellings constructed	150	100.00%

Source: Statistics Canada 2001 Census (numbers may not add up due to rounding)

Disclaimer: Information in this profile has been provided from a variety of external sources. Although every effort has been made to ensure the accuracy, currency and reliability of the content and data, AlbertaFirst.com Ltd. accepts no responsibility in this regard.

© AlbertaFirst.com Ltd., 2006.