

Fort Macleod

www.fortmacleod.com

Welcome

As the Mayor of Fort Macleod I would like to take this opportunity to welcome you to our **Town**. Originally the home of the North West Mounted Police, Fort Macleod tells the history of the Police, Early Settlers and Native Culture in our Fort Museum. We are on the crossroads of Highway 2 and Highway 3, along the Oldman River. This gives us ease of access to great fishing and the River Valley Wilderness Park for bird, elk, and deer watching, and native plant identification. With the oldest Golf Course in Western Canada and the only designated Historic Area in the Province, we have great culture and quality recreational facilities. Come and join us for our annual Santa Claus Parade, the oldest and largest west of Toronto. I am sure you will have a great time in Fort Macleod, where the quality of life is number one.

Area Overview

Fort Macleod, with a population of over 3000 and a trading area of 14,000 (2001 Census) is located one hour North of the U.S. border at the confluence of four highways and 2 streams: Export Highway #2, Crowsnest Highway #3 Waterton Highway #811, Northeast Highway #810 plus the Oldman River with Willow Creek. Furthermore, the Canadian Pacific Railway transports freight east and west. As well as economically strategic, this location provides great visibility and access to the travelling public.

Fort Macleod is one of the most unique and progressive communities in Canada. As Alberta's oldest town it has a very colourful heritage. In the early 1870's, Fort Macleod was a North West Mounted Police outpost, as well as the main trading centre for Southern Alberta.

In 1982, Heritage Canada and the Town started a Main Street Restoration Project. Fort Macleod is now the only Designated Historic Area in the Province of Alberta with 60 buildings (in the area). Some of these buildings date back to 1878 with several sandstone and brick buildings from the 1910 to 1920 era. We are proud of our gradual growth in population, business, culture, and recreation.

Fort Macleod is a growing community which enables economic growth and new businesses to flourish, and encourages existing businesses to expand.

While ranching and farmland surround Fort Macleod, there are 120 acres of industrial land (mostly serviced) available to the budding entrepreneur or established business owner who wants to take advantage of Alberta's economic opportunities. Local recreational facilities include golf course, curling & hockey arenas, natural wildlife and floral reserve park. Within an hour's drive of this family-oriented community are recreational sites such as Waterton-Glacier International Peace Park, Westcastle Ski Resort, Three Rivers Dam, Oldman River Dam and St. Mary's Reservoir.

Community Services

Municipal

Town of Fort Macleod
236 - 23rd Street, Box 1420
Fort Macleod, Alberta
T0L 0Z0
Tel: (403)-553-4425

Fax: (403)-553-2426
Toll free 1-877-622-5366

Public Library

Tel: 403-553-3880
Internet Access available

Public Works

Tel: 403-553-3375

Family & Community Support Services

Tel: (403)-553-4491
Fax: (403)-553-2189

Project Read

Tel: 403-553-4086
Fax 403-553-2189

Recreation

Tel: (403)-553-4101

Town Special Constable/ By-Law Enforcement

Tel: (403)-553-4425

Economic Development & Tourism

Tel: (403)-553-2500/3204
Fax: (403)-553-2189
Toll Free - 1-877-622-5366
e-mail edo@fortmacleod.com
Home Key Contacts for Business Development

Community Lifestyle

Recreation:

Fort Macleod boasts many recreational facilities year round. The Town has the highest number of parks per capita in Canada, including playgrounds, and the oldest golf course in western Canada.

Fort Macleod also has an outdoor swimming pool, tennis courts, skate park and an arena complex. The River Valley Wilderness Park provides interpretive trails for biking, cross country skiing, bird watching and special floral attributes only found in this area. The scenic Rocky Mountains to the west provide skiing and camping as well. Many of the recreational facilities in Fort Macleod accommodate many different types of sports.

Community Organizations:

- Rebekahs
- Royal Purple
- Lions/Lionettes
- Fish & Game Association
- Hospital Aid
- Masonic Order/Eastern Star/Job's Daughters

- Royal Canadian Legion Chamber of Commerce
- Allied Arts Council
- Elks
- Rotary
- Women's Institute
- Beta Sigma Phi
- Knights of Columbus
- Historical Association
- Senior Citizens' Welcome Mat

Religious Services:

- Trinity United Church
- Fort Macleod Christian Fellowship
- Holy Cross Roman Catholic Church
- Netherlands Reformed Church
- Heritage Reform Church
- Christian Reformed Church
- Fort Macleod Alliance Church
- Christ Church Anglican
- The Victory Church
- Church of Jesus Christ of Latter Day Saints
- Jehovah's Witnesses Kingdom Hall

Special Annual Events/Attractions:

Fort Macleod offers many attractions which draw people worldwide to come and visit.

The town's Main Street, where over 30 historically and architecturally rich structures were reconstructed, was designated as Alberta's first and only provincial historic area. The complete restoration of the Empress Theatre now acts as the Town's cultural centre and is the Province's oldest operating theatre. The original Police Outpost of the early 1870's is now the Fort Museum. West of Town is the World Heritage Site Head-Smashed-In-Buffalo-Jump.

There is a quality of life, second to none, that allows for the growth of culture, recreation and good business.

Annual Events:

- French Film Festival - April
- Classic Car Show - April
- Fort Museum Musical Ride July & August
- Midnight Days - June/July
- Antique Sale & Show - July
- South Country Fair -- July
- Ranchmen's Rodeo -- July
- Head-Smashed-In-Buffalo-Jump Pow Wow -- July
- Great West Summer Theatre -- July, August
- Heritage Fair at the Fort Museum - August
- Oldman River Festival - August

- Santa Claus Parade -- last Saturday in November

Hospitality:

Accommodation:

- Century II Motel
- DJ Motel
- Fort Motel
- Queens Hotel
- Red Coat Inn
- Sunset Motel
- Heritage House Motel

Restaurants:

- A & W Restaurant
- Igloo Drive-In
- Head-Smashed-In Cafeteria
- Java Shop Restaurant
- Luigi's Restaurant
- New Hong Kong Restaurant
- Johnny's Cafe
- Macleod's Restaurant and Lounge
- Subway
- Westerner Famil Restaurant & Midnight Lounge China City
- Aunty Lynda's Dining Room
- Silver Grill
- Auction Market Restaurant

Economic Base

Fort Macleod is a progressive community which has grown economically. The Town Council is offering Industrial Land at competitive prices.

While agriculture and ranching are the mainstays of the local economy, in recent years industrial expansion has focused on tourism and related businesses. With this in mind

the town has not forgotten about their youth and have worked with Alberta Economic Development and Tourism to retain and expand local businesses as well as attract new businesses to town, in order to provide needed employment for the youth.

Economic Facts

Some of the town's major employers are Structural Truss Systems, Frans Feyter Construction, Bouvry Exports, Fort Macleod Auction Market, Forma Steel, Falcan Industries, Major Retail and service sector, and the various government agencies.

Major Businesses Products/Services

- Structural Truss Systems - Construction
- Frans Feyter Construction - Construction

- Bouvry Exports - Meat Exports
- Fort Macleod Auction Market - Auction Services
- O'Sullivan Construction - Cement
- John's Construction - New Homes
- Falcan Industries - Trailer manufacturer

Financial Institutions

- Canadian Imperial Bank of
- Commerce Macleod Savings and Credit Union
- Alberta Treasury Branch

Education

Fort Macleod is part of the Livingstone Range School Division #68, headquartered in Claresholm Tel: 1-800-310-6579.

Daycare/Nursery

- Fort Macleod Sunshine Kids Satellite Day Home Society

Public Schools

- Schools in Fort Macleod include
- W.A. Day Elementary School [k-3],
- G.R. Davis School [4-7], and
- F.P. Walshe School [8-12].

Lethbridge Community College Satellite Campus

Emergency Services

Fort Macleod is serviced by **911**.

Fire Protection (Tel: 911)

Fort Macleod is served by a local Volunteer Fire Department [Tel: 911].

Police Services (Tel: 911)

Fort MacLeod is served by a local detachment of the Royal Canadian Mounted Police [RCMP] [Tel: 403-553-4406].

Ambulance Services

Local ambulance service is available [Tel: 911].

Health Care

The Fort Macleod Hospital has 24hr. X-ray/Lab; 24 hr. Emergency Care; 24-48 hr. Community Care Beds. The hospital complex also has a special development unit for the care of multi-handicapped people.

Senior citizens who no longer live in their own homes have a choice of 3 types of accommodation, depending on their health and independence. The elderly and disabled also benefit from Handi-bus service and a local drop-in centre.

Key Contacts for Business Development

Gordon MacIvor

Economic Development Officer

Tel: (403)-553-3204

Fax:(403)-553-2189

Toll free - 1-877-622-5366

Home Page. <http://www.fortmacleod.com>

edo@fortmacleod.com

Shawn Patience

Mayor

Lane McLaren

Manager

lane@fortmacleod.com

Provincial (Updated May 2006)

Alberta Economic Development

105, 200-5th Avenue, South

Lethbridge, AB

T1J 4L1

Phone: (403) 381-5414

Fax: (403) 381-5741

Mary Swanek, Information Officer

mary.swanek@gov.ab.ca

Honourable David Coutts (PC)

MLA for Livingstone-Macleod

Constituency Office

P.O. Box 69

2115 - 2nd Avenue

Fort Macleod, AB

T0L 0Z0

Phone: (403) 553-2400

Toll Free: 1-800-565-0962

Fax: (403) 553-2133

livingstone.macleod@assembly.ab.ca

Legislature Office

#420 Legislature Building

10800 - 97 Avenue

Edmonton, AB

T5K 2B6

Phone: (780) 415-4815

Fax: (780) 415-4818

Federal (Updated May 2006)

MP- Macleod, Alberta

MENZIES, Ted (Conservative)

Parliamentary Address

House of Commons
Ottawa, Ontario
K1A 0A6
Telephone: (613) 995-8471
Fax: (613) 996-9770
E-Mail: Menzies.T@parl.gc.ca

Constituency Address

4925 1st Street West, P.O. Box 40
Claresholm, Alberta
T0L 0T0
Telephone: (403) 625-5532 1-866-636-9437
Fax: (403) 625-5592
TTY:
E-Mail: menziest@telus.net

Location

The Town of Fort Macleod is located in the Municipal District of Willow Creek #26, at the junction of Highway 2 and Highway 3, in southern Alberta. It is 48 km west of Lethbridge and 144 km south of Calgary. It is located on the Oldman River 48 km east of the Oldman River Dam and 60 km from Glacier-Waterton International Peace Park.

Post Secondary Education

Fort Macleod residents are within easy commuting distance of Lethbridge-based post-secondary institutions such as the University of Lethbridge and Lethbridge Community College.

Taxation

	<u>Residential/Farmland</u>	<u>Non-Residential</u>
2005		
Municipal Tax Rate	10.9393	18.9892
Education - Alberta School Foundation Fund Tax Rate	4.5538	7.3690
Allowance for Non-Collection of Requisitioned Taxes	.1903	.1903
Seniors Lodge Accommodation Tax Rate	.3541	.3541

Mill Rates [2006]

Residential-Public 14.8711
Residential-Separate N/A
Non-Residential-Public 25.0448
Non-Residential-Separate N/A

Transportation

Air Service

Fort Macleod has a local airstrip with all-weather facilities and a 914 metre runway. The nearest commercial and air freight services

are at Lethbridge, 48 km east of Fort Macleod.

Rail Service

Fort Macleod is served by Canadian Pacific Railway main line.

Highways

Connecting highways are Highway 2, the major north-south route connecting Fort Macleod to Calgary and Edmonton, and Highway 3, which connects to Lethbridge [east] and the British Columbia border [west].

Trucking Firms

- Boot Trucking Ltd.
- Fort Macleod Transport
- Hornberger Trucking
- H & H Drilling
- Vanee Livestock Ltd.

Bus Services

- Greyhound Bus Lines provides regularly scheduled inter-community service.

Couriers and Taxis

- Greyhound Courier Express, Loomis and Purolator Couriers. Red Coach Cab provides local taxi service.

Utilities

Electrical Power

Enmax

Lethbridge, Alberta

Tel: (403)-310-2010

Natural Gas

ATCO Gas

245 - 24 Street

Fort Macleod, Alberta

T0L 0Z0

Tel: (403)-310-5678

Telephone

TELUS Ltd.

Tel: (403)-310-2255

Out of Province 1-800-400-2598

Telus.com

Water Supply

The source of water is the Oldman River. The reservoir capacity, measured in treated substance, is 9,090 cubic metres.

Waste Management

Sewage treatment is provided by a rotating biological contactor, CL2.

Residential garbage is collected weekly, while commercial and industrial garbage is collected daily or as required.

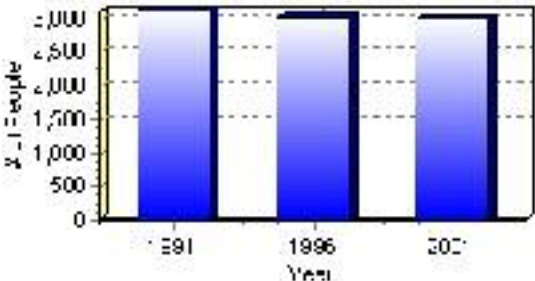
Population

Total Population

Population 2004*	2,990
Population 2003*	2,990
Population 2002*	2,990
Population 2001**	2,990
Population 2000*	3,034
Population 1996**	3,034
Population 1991**	3,112
Population % change 1991-1996	-2.57%
Population % change 1996-2001	-1.47%

* Source: Official Population List, Alberta Municipal Affairs
** Source: Statistics Canada 1991, 1996, & 2001 Census

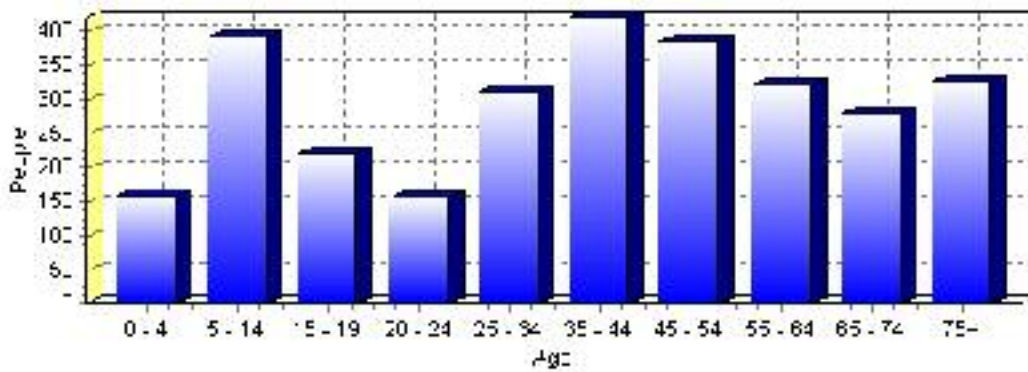
Total Population 1991-2001



Population by Age and Gender	1996 Male	1996 Female	1996 Total	2001 Male	2001 Female	2001 Total
Age 0 - 4	105	100	205	75	85	160
Age 5 - 14	240	200	440	200	190	390
Age 15 - 19	115	115	230	110	110	220
Age 20 - 24	85	80	165	80	75	155
Age 25 - 34	190	195	385	145	165	310
Age 35 - 44	195	220	415	210	210	420
Age 45 - 54	170	180	350	175	210	385
Age 55 - 64	135	165	300	155	165	320
Age 65 - 74	120	145	265	135	145	280
Age 75 and older	110	175	285	110	215	325
Total All Persons	1,455	1,580	3,035	1,405	1,585	2,990

Source: Statistics Canada 1996 & 2001 Census (numbers may not add up due to rounding)

Fort Macleod Population by Age Group (2001)

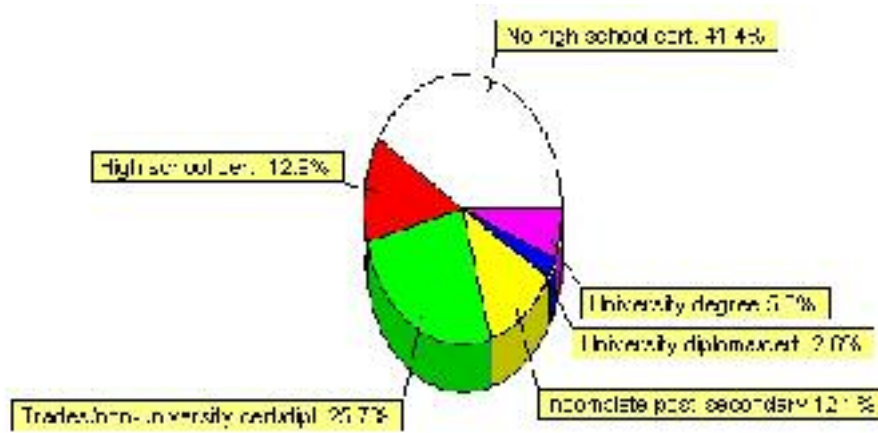


Education Statistics

Highest level of schooling for Population 20yrs and older	2001	%
People without high school certificates	885	41.36%
People with high school certificates	275	12.85%
People with trades or non-university certificate or diploma	550	25.70%
People with post-secondary education (not completed)	260	12.15%
People with university diploma/certificate	55	2.57%
People with university degree	125	5.84%
Total Population 20 years and older	2,140	100.00%

Source: Statistics Canada 2001 Census (numbers may not add up due to rounding)

Fort Macleod Highest Level of Schooling 2001



Population with Post Secondary Qualifications	1996	%	2001	%
Agriculture and biological sciences	30	3.66%	50	6.85%
Commerce, management and business administration	205	25.00%	165	22.60%
Educational, recreational and counseling services	145	17.68%	100	13.70%
Engineering and applied science tech. and trades	205	25.00%	235	32.19%
Engineering and applied sciences	0	0.00%	10	1.37%
Fine and applied arts	30	3.66%	40	5.48%
Health professionals, science and technologies	110	13.41%	70	9.59%
Humanities and related fields	40	4.88%	15	2.05%
Mathematics and physical sciences	0	0.00%	20	2.74%
Social sciences and related fields	45	5.49%	20	2.74%
Other and/or no specialization	0	0.00%	0	0.00%
Total people with post secondary qualifications	820	100.00%	730	100.00%
Females with post-secondary qualifications	435	53.05%	370	50.68%
Males with post-secondary qualifications	385	46.95%	360	49.32%

Source: Statistics Canada 1996 & 2001 Census (numbers may not add up due to rounding)

Labour Force

Labour force by activity	1996	2001
In the labour force, both sexes	1,530	1,480
Not in the labour force, both sexes	755	860
Total population 15 and over	2,285	2,335
Employed, both sexes	1,440	1,355
Unemployed, both sexes	85	125
Participation rate, both sexes	67.00%	63.00%
Unemployment rate, both sexes	5.00%	8.00%

Source: Statistics Canada 1996 & 2001 Census (numbers may not add up due to rounding)

Labour Force by Industry Division	1996	% of total	2001	% of total
Agriculture	115	7.64%	45	3.10%
Mining	15	1.00%	35	2.41%
Manufacturing	80	5.32%	195	13.45%
Construction	110	7.31%	125	8.62%
Transportation. & Utilities	110	7.31%	140	9.66%
Retail and Wholesale	220	14.62%	225	15.52%
Finance	95	6.31%	60	4.14%
Business & Community Services	655	43.52%	595	41.03%
Public Administration	75	4.98%	35	2.41%
Total All Industries	1,505	100.00%	1,450	100.00%

Source: Statistics Canada 1996 & 2001 Census (numbers may not add up due to rounding)

Fort Macleod Labour Force By Industry - 2001



Labour Force by Major Occupational Groups	1996	%	2001	%
Management occupations	120	7.97%	150	10.34%
Business, Finances and administrative occupations	225	14.95%	160	11.03%
Natural and applied sciences and related occupations	10	0.66%	0	0.00%
Health occupations	90	5.98%	110	7.59%
Occupations in social science; education; government and religion	120	7.97%	95	6.55%
Occupations in art; culture; recreation and sport	10	0.66%	10	0.69%

Sales and service occupations	520	34.55%	375	25.86%
Trades; transport; equipment operators and related occupations	260	17.28%	360	24.83%
Occupations unique to primary industry	90	5.98%	75	5.17%
Occupations unique to processing; manufacturing and utilities	65	4.32%	115	7.93%
Occupations not elsewhere classified	25	1.66%	30	2.07%
Total - All Occupations (major groups)	1,505	100.00%	1,450	100.00%
Females - All Occupations	735	48.84%	655	45.17%
Males - All Occupations	770	51.16%	800	55.17%

Source: Statistics Canada 1996 & 2001 Census (numbers may not add up due to rounding)

Income

Family Income (Number of Families)	1996	%	2001	%
less than \$19,999	60	8.33%	105	13.91%
\$20,000 - \$39,999	240	33.33%	220	29.14%
\$40,000 - \$59,999	190	26.39%	310	41.06%
\$60,000 and over	230	31.94%	140	18.54%
Total number of families	720	100.00%	775	102.65%
Average family income	\$50,281		\$49,686	
Median family income	\$43,374		\$45,990	

Source: Statistics Canada 1996 & 2001 Census (numbers may not add up due to rounding)

Household Income (Number of Households)	1996	%	2001	%
less than \$19,999	300	25.00%	295	24.58%
\$20,000 - \$39,999	410	34.17%	305	25.42%
\$40,000 - \$59,999	230	19.17%	325	27.08%
\$60,000 and over	65	5.42%	290	24.17%
Total number of households	1,200	100.00%	1,200	100.00%
Average household income	\$40,625		\$43,338	
Median household income	\$35,458		\$40,750	

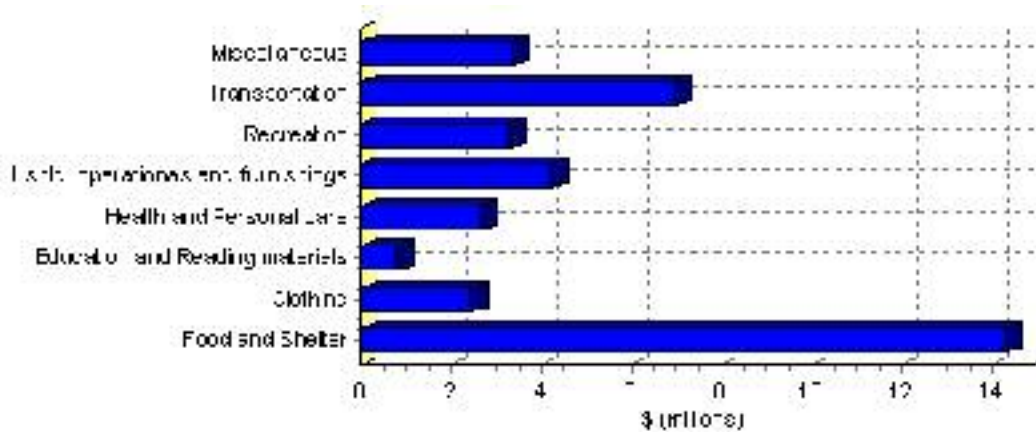
Source: Statistics Canada 1996 & 2001 Census (numbers may not add up due to rounding)

Family Expenditure

Expenditure Category	1992	% of total	1996	% of total
Food and Shelter	\$12,192,165	37.57%	\$14,319,844	37.57%
Clothing	\$2,181,965	6.72%	\$2,443,812	6.41%
Education and Reading materials	\$644,505	1.99%	\$798,029	2.09%
Health and Personal care	\$2,055,015	6.33%	\$2,664,104	6.99%
Hshld. operations and furnishings	\$3,548,740	10.94%	\$4,246,044	11.14%
Recreation	\$2,506,145	7.72%	\$3,294,916	8.65%
Transportation	\$6,689,275	20.61%	\$6,971,886	18.29%
Miscellaneous	\$2,619,910	8.07%	\$3,372,732	8.85%
Total Current Consumption	\$32,450,435	100.00%	\$38,111,367	100.00%
Total # of Households	1,170		1,201	
Average Consumption per Household	\$27,735		\$31,733	

Source: Statistics Canada Family Expenditure Survey 1992 & 1996 (numbers may not add up due to rounding).

Fort Macleod Family Expenditures (1996)

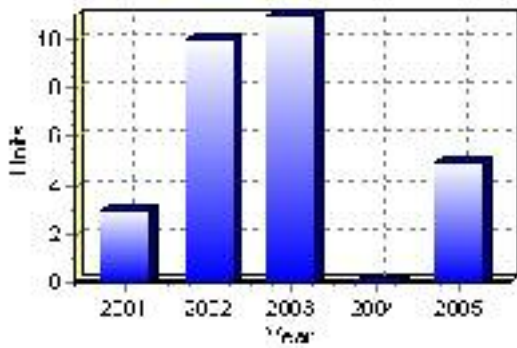


Building Permits

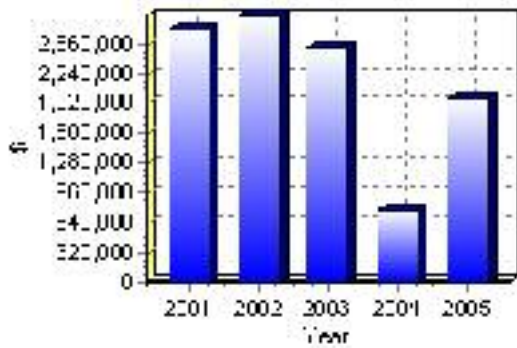
Total Building Permit Values	2001	2002	2003	2004	2005
Building Permits Value, Commercial	\$1,785,000	\$268,000	\$167,000	\$100,000	\$450,000
Building Permits Value, Industrial	\$89,000	\$908,000	\$160,000	\$42,000	\$42,000
Building Permits Value, Institutional	\$15,000	\$145,000	\$373,000	\$486,000	\$388,000
Building Permits Value, Residential	\$806,000	\$1,530,000	\$1,807,000	\$154,000	\$1,097,000
Building Permits Value, Total	\$2,695,000	\$2,851,000	\$2,507,000	\$782,000	\$1,977,000
Total Housing Starts	3	10	11	0	5

Source: Statistics Canada 2000-2004 Building Permits (numbers may not add up due to rounding)

Total Housing Starts



Value of Building Permits



Dwellings

Occupied Private Dwellings by Type	1996	% of total	2001	% of total
Apartments	125	10.42%	105	8.75%
Detached Duplexes	35	2.92%	10	0.83%
Movable Dwellings	15	1.25%	115	9.58%
Other single attached house	20	1.67%	0	0.00%
Row and semi-detached house	45	3.75%	40	3.33%
Single-detached house	960	80.00%	940	78.33%
Total number of occupied private dwellings	1,200	100.00%	1,200	100.00%
Private dwellings, owned	825	68.75%	900	75.00%
Private Dwellings, rented	375	31.25%	305	25.42%

Source: Statistics Canada 1996 & 2001 Census (numbers may not add up due to rounding)

Private Dwellings by Period of Construction	# of Dwellings	% of total
Period of construction, before 1946	305	25.42%
Period of construction, 1946 - 1960	220	18.33%
Period of construction, 1961 - 1970	155	12.92%
Period of construction, 1971 - 1980	305	25.42%
Period of construction, 1981 - 1990	135	11.25%
Period of construction, 1991 - 2001	80	6.67%
Total number of private dwellings constructed	1,200	100.00%

Source: Statistics Canada 2001 Census (numbers may not add up due to rounding)

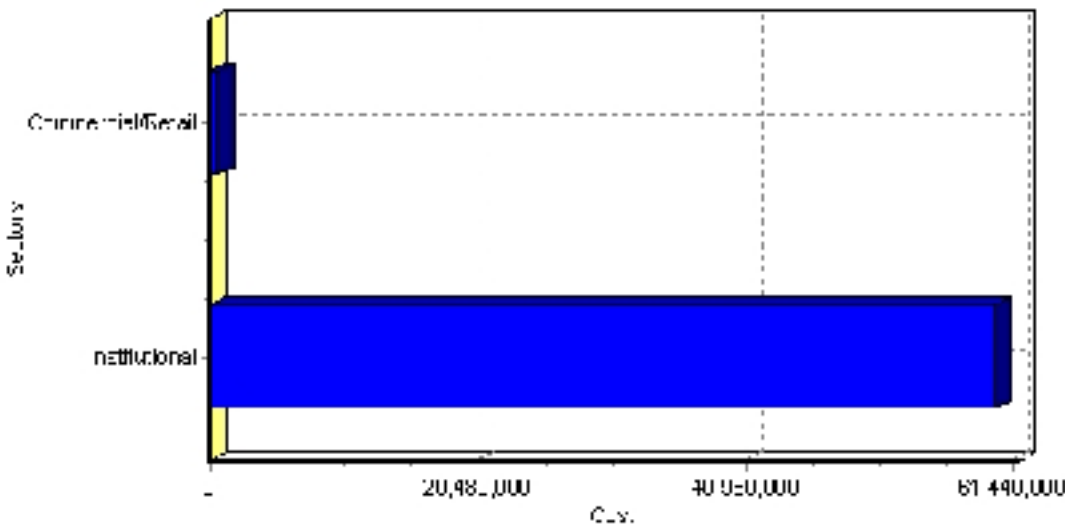
Projects

Summary of Projects in Fort Macleod as of September 2006

Project Sector	Number of Projects	Project Cost
Institutional	1	\$60,000,000
Commercial/Retail	2	\$591,000
Total	3	\$60,591,000

This inventory lists projects in Alberta that have recently been completed, are under construction, or are proposed to start construction. Not all projects are listed due to reasons of confidentiality and/or due to information not being available at the time of printing. Project data is obtained from public information sources, where possible, this data has been verified with the project proponent/developer, users of the Inventory may wish to confirm project data with the proponent/developer. The inventory does not breakdown project expenditures by any given year. The cost of a project is the value of expenditures expected over all phases of project construction, which may span over two or more years. Cost of projects listed in the Inventory are estimated values only. Source: Alberta Economic Development, 2004.

Value of Projects by Sector (as of September 2006)



Project Status	Number of Projects	Project Cost
Proposed	1	\$60,000,000
Under Construction	2	\$591,000
Total	3	\$60,591,000

This inventory lists projects in Alberta that have recently been completed, are under construction, or are proposed to start construction. Not all projects are listed due to reasons of confidentiality and/or due to information not being available at the time of printing. Project data is obtained from public information sources, where possible, this data has been verified with the project proponent/developer, users of the Inventory may wish to confirm project data with the proponent/developer. The inventory does not breakdown project expenditures by any given year. The cost of a project is the value of expenditures expected over all phases of project construction, which may span over two or more years. Cost of projects listed in the Inventory are estimated values only. Source: Alberta Economic Development, 2004.

Largest Projects in Fort Macleod as of September 2006

Company Name	Project Description	Project Location	Project Cost	Construction Schedule	Status
Alberta Solicitor General and Public Security	Provincial Police and Peace Officer College	Fort MacLeod	\$60,000,000	-	Proposed
GW Power	NEW BUILDING	Fort Macleod	\$366,000	2006-2006	Under Construction
Fort Macleod Agency	OFFICE ADDITION	Fort Macleod	\$225,000	2006-2006	Under Construction

Disclaimer: Information in this profile has been provided from a variety of external sources. Although every effort has been made to ensure the accuracy, currency and reliability of the content and data, AlbertaFirst.com Ltd. accepts no responsibility in this regard.

© AlbertaFirst.com Ltd., 2006.