

Holden

www.village.holden.ab.ca

Welcome

Welcome to our community! We hope the information contained within this profile is useful. If additional information is required, please contact our representative from the "Key Contacts" section.

Holden is a great place to live and work.

Area Overview

The Village of Holden derived its name from the late Mr. J.B. Holden, the first M.L.A. in the constituency for the Province. There were few settlers in the area before 1902. By 1903, the community was starting to be settled with the name Pleasant Ridge chosen. The Village of Holden was formally incorporated as a village on April 14, 1909.

Holden is situated on fairly flat land with wide streets, sidewalks and some paved roads. Homes are well kept and numerous new homes have been built.

Experience the charm of country living when visiting Holden. There is a lot to see in Holden. One can view the Beaver Regional Arts Centre, a museum with a large array of historical items, and the elaborate Holy Ghost Ukrainian Church where tours can be arranged.

Community Services

Municipal

Village of Holden
Box 357
Holden, Alberta T0B 2C0
Tel: 780-688-3928
Fax: 780-688-2091

Holden Municipal Library
4912 - 50 Street
Holden, Alberta T0B 2C0
Tel: 780-688-3838

Provincial

N/A

Federal

Canada Post Office

Community Lifestyle

Recreation

Recreation facilities include the Holden Complex for curling/skating, 3 baseball diamonds, and cultural theatre.

Community Organizations

Local community organizations include the Agricultural Society, Royal Canadian Legion, Figure and Power Skating, Local Recreation Board, Municipal Library Board, Order of Royal Purple, Masonic Lodge, Historical Society, Minor Hockey Association, Senior's Club, Holden Parent Nursery, Beaver Regional Arts Society, Beaverhill Players, Holden Economic Development Committee, Holden/Bruce & District Recycling Committee and the Holden Community Hall Association.

Religious Services

- United Church
- Roman Catholic Church
- Lutheran Church
- Ukrainian Catholic Church

Special Annual Events/Attractions

The Beaver Regional Arts Centre is in Holden. The museum has a large array of historical items. One may also visit the elaborate Holy Ghost Ukrainian Church where tours can be arranged. The Beaver Regional Arts Centre hosts such events as the annual Chautauqua, showcasing talent from northeastern Alberta.

Accommodation

- Holden Hotel

Restaurants

- Country Kitchen
- Betty's Place
- Pic-A-Lilli [Tea House]
- P & J Cafe

Economic Base

Holden's major economic base is agriculture and natural gas.

Economic Facts

Soils in the Holden area are among the most fertile in the province. There is 3 to 4 times as much nitrogen and organic matter in the surface foot as the average brown or grey wooded soil.

Regional resources include agriculture, cereal grains, cattle and natural gas.

Major Businesses

N/A

Products/Services

N/A

Financial Institutions

Education

Holden is part of the Battle River Regional School Division, headquartered in Camrose [Tel: 780-672-6131].

Daycare/Nursery

N/A

Public

Holden School provides schooling for Grades K to 9. Senior high school students are bussed to Ryley.

Separate

N/A

Private

N/A

Emergency Services

Fire Protection

Holden is served by a volunteer fire department [Tel: 911].

Police Services

Holden is served by the Tofield detachment of the Royal Canadian Mounted Police [RCMP] [Tel: 911].

Ambulance Services

Ambulance service is available from Viking [Tel: 911] or Tofield [Tel: 911].

Health Care

The nearest hospitals are at Tofield, 37 km west of Holden, and at Viking, 32 km east of Holden. There is a senior citizens lodge in Holden.

Key Contacts for Business Development

Municipal

Village of Holden
Box 357
Holden, Alberta T0B 2C0
Tel: 780-688-3928
Fax: 780-688-2091
vholden@telusplanet.net

Ivan Hrabec

Mayor

Christine Mackay
Administrator

Provincial (Updated June, 2001)

Alberta Economic Development
Allan Walkey, Regional Manager
allan.walkey@gov.ab.ca

Dale Beddoes, Client Services Representative
dale.beddoes@gov.ab.ca

5005 - 49 Street
Camrose, Alberta T4V 1N5
Tel: 780-679-1235
Fax: 780-679-1250

Ed Stelmach
Member of the Legislative Assembly [MLA]
Fort Saskatchewan-Vegreville Constituency
607 Legislature Annex
9718 107 Street
Edmonton AB T5K 1E4
Tel: 780-422-5384
Fax: 780-415-0951

Constituency Office:
Box 451
4945 - 51 Avenue
Vegreville AB T9C 1R6
Tel: 780-632-6840
Fax: 780-632-6888

Federal (Updated June 2001)

Leon Benoit
Member of Parliament [MP]
Vegreville-Wainwright Constituency
House of Commons
Ottawa, Ontario K1A 0A6
Tel: 613-992-4171
Fax: 613-996-9011

Constituency Office:
5004 - 49th Street
Professional Building
P.O. Box 300
Mannville, Alberta T0B 2W0
Tel: 780-763-6130
Fax: 780-763-6132

Location

The Village of Holden is located in the County of Beaver No. 9. It is 95 km southeast of Edmonton, 68 km northeast of Camrose and

343 km northeast of Calgary.

Post Secondary Education

Holden residents have access to Edmonton-based post-secondary institutions such as The University of Alberta, Northern Alberta Institute of Technology [NAIT] and Grant MacEwan College.

Taxation

	<u>Residential/Farmland</u>	<u>Non-Residential</u>
2005		
Municipal Tax Rate	2.1900	2.4900
Education - Alberta School Foundation Fund Tax Rate	3.7000	6.9000
Allowance for Non-Collection of Requisitioned Taxes	.1000	.1000
Seniors Lodge Accommodation Tax Rate	.2000	.2000

Mill Rates [1998]

Residential - Public 34.65
Residential - Separate N/A
Non-Residential - Public 45.76
Non-Residential - Separate N/A

Transportation

Air Services

The nearest airport is at Viking. The nearest commercial and air freight facilities are at Edmonton.

Rail Services

Holden is served by a Canadian National Railway main line. Spur trackage is available.

Highways

Connecting highways are Highway 14, leading west to Edmonton and east to Viking, and Secondary Highway 855, leading south to Highway 26.

Trucking Firms

Good's Transport
CN Trucking

Bus Services

Greyhound Bus Lines provides regularly scheduled inter-community bus service.

Couriers and Taxis

Loomis and Purolator Couriers, Canpar

Utilities

Electrical Power

TransAlta Utilities Corporation
Box 1900, Station "M"
Calgary, Alberta T2P 2M1
Tel: 1-800-667-2345

Natural Gas

Northwestern Utilities Limited
4720 - 46 Ave., Box 210
Tofield, Alberta T0B 4J0
Tel: 1-800-249-4698

Telephone

Alberta Government Telephones Ltd.
Red Deer, Alberta
Tel: 1-403-310-2255

Water Supply

Holden's source of water is from creeks.

Waste Management

Sewage treatment is by lagoon, 4 short and 2 long detention.

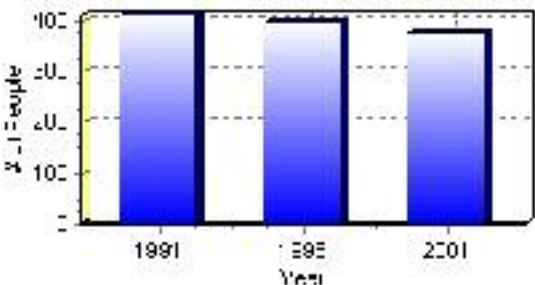
Population

Total Population

Population 2004*	374
Population 2003*	374
Population 2002*	374
Population 2001**	375
Population 2000*	397
Population 1996**	397
Population 1991**	411
Population % change 1991-1996	-3.53%
Population % change 1996-2001	-6.15%

* Source: Official Population List, Alberta Municipal Affairs
 ** Source: Statistics Canada 1991, 1996, & 2001 Census

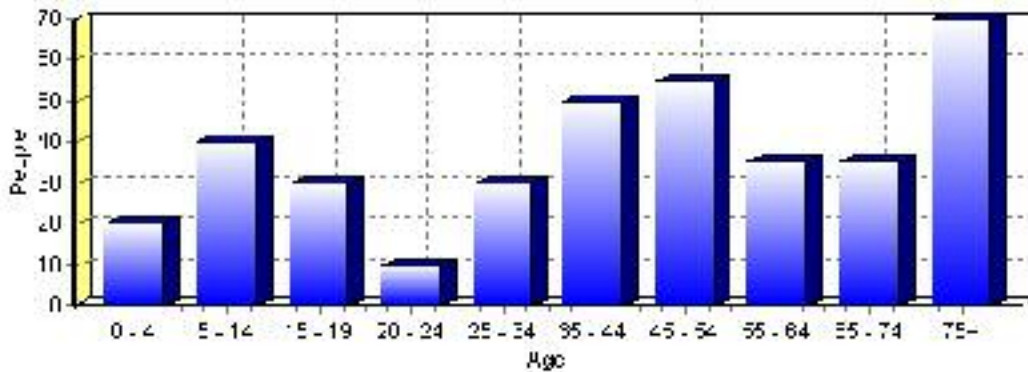
Total Population 1991-2001



Population by Age and Gender	1996 Male	1996 Female	1996 Total	2001 Male	2001 Female	2001 Total
Age 0 - 4	10	5	15	10	10	20
Age 5 - 14	25	20	45	25	15	40
Age 15 - 19	10	10	20	10	20	30
Age 20 - 24	0	5	5	5	5	10
Age 25 - 34	20	15	35	10	20	30
Age 35 - 44	35	25	60	25	25	50
Age 45 - 54	20	10	30	30	25	55
Age 55 - 64	10	15	25	15	20	35
Age 65 - 74	25	30	55	15	20	35
Age 75 and older	30	40	70	25	45	70
Total All Persons	205	195	400	180	200	380

Source: Statistics Canada 1996 & 2001 Census (numbers may not add up due to rounding)

Holden Population by Age Group (2001)

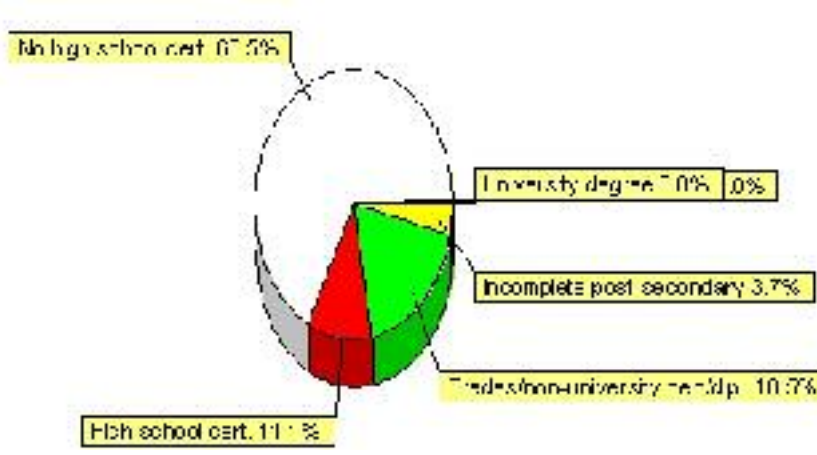


Education Statistics

Highest level of schooling for Population 20yrs and older	2001	%
People without high school certificates	185	68.52%
People with high school certificates	30	11.11%
People with trades or non-university certificate or diploma	50	18.52%
People with post-secondary education (not completed)	10	3.70%
People with university diploma/certificate	0	0.00%
People with university degree	0	0.00%
Total Population 20 years and older	270	100.00%

Source: Statistics Canada 2001 Census (numbers may not add up due to rounding)

Holden Highest Level of Schooling 2001



Population with Post Secondary Qualifications	1996	%	2001	%
Agriculture and biological sciences	0	0.00%	0	0.00%
Commerce, management and business administration	20	21.05%	20	44.44%
Educational, recreational and counseling services	20	21.05%	0	0.00%
Engineering and applied science tech. and trades	25	26.32%	10	22.22%
Engineering and applied sciences	0	0.00%	10	22.22%
Fine and applied arts	10	10.53%	0	0.00%
Health professionals, science and technologies	15	15.79%	10	22.22%
Humanities and related fields	10	10.53%	0	0.00%
Mathematics and physical sciences	0	0.00%	0	0.00%
Social sciences and related fields	0	0.00%	0	0.00%
Other and/or no specialization	0	0.00%	0	0.00%
Total people with post secondary qualifications	95	100.00%	45	100.00%
Females with post-secondary qualifications	65	68.42%	25	55.56%
Males with post-secondary qualifications	30	31.58%	20	44.44%

Source: Statistics Canada 1996 & 2001 Census (numbers may not add up due to rounding)

Labour Force

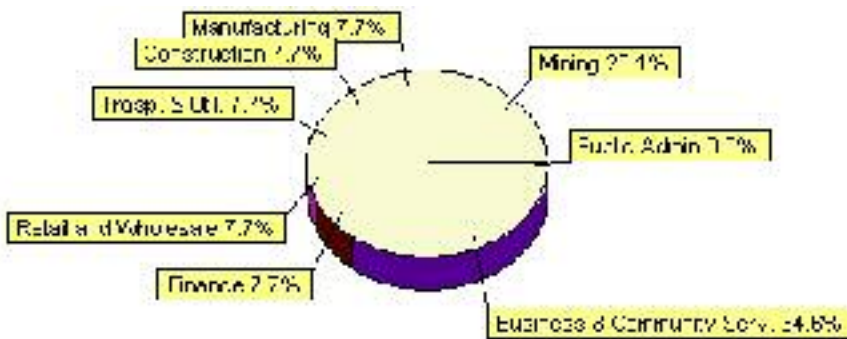
Labour force by activity	1996	2001
In the labour force, both sexes	125	130
Not in the labour force, both sexes	165	170
Total population 15 and over	295	300
Employed, both sexes	120	125
Unemployed, both sexes	10	10
Participation rate, both sexes	42.00%	43.00%
Unemployment rate, both sexes	8.00%	8.00%

Source: Statistics Canada 1996 & 2001 Census (numbers may not add up due to rounding)

Labour Force by Industry Division	1996	% of total	2001	% of total
Agriculture	15	11.54%	0	0.00%
Mining	0	0.00%	30	23.08%
Manufacturing	25	19.23%	10	7.69%
Construction	0	0.00%	10	7.69%
Transportation. & Utilities	10	7.69%	10	7.69%
Retail and Wholesale	20	15.38%	10	7.69%
Finance	15	11.54%	10	7.69%
Business & Community Services	35	26.92%	45	34.62%
Public Administration	0	0.00%	0	0.00%
Total All Industries	130	100.00%	130	100.00%

Source: Statistics Canada 1996 & 2001 Census (numbers may not add up due to rounding)

Holden Labour Force By Industry - 2001



Labour Force by Major Occupational Groups	1996	%	2001	%
Management occupations	10	8.00%	10	7.69%
Business, Finances and administrative occupations	15	12.00%	10	7.69%
Natural and applied sciences and related occupations	0	0.00%	0	0.00%
Health occupations	15	12.00%	10	7.69%
Occupations in social science; education; government and religion	0	0.00%	0	0.00%
Occupations in art; culture; recreation and sport	0	0.00%	10	7.69%

Sales and service occupations	35	28.00%	35	26.92%
Trades; transport; equipment operators and related occupations	20	16.00%	35	26.92%
Occupations unique to primary industry	20	16.00%	15	11.54%
Occupations unique to processing; manufacturing and utilities	10	8.00%	0	0.00%
Occupations not elsewhere classified	0	0.00%	0	0.00%
Total - All Occupations (major groups)	125	100.00%	130	100.00%
Females - All Occupations	65	52.00%	55	42.31%
Males - All Occupations	60	48.00%	75	57.69%

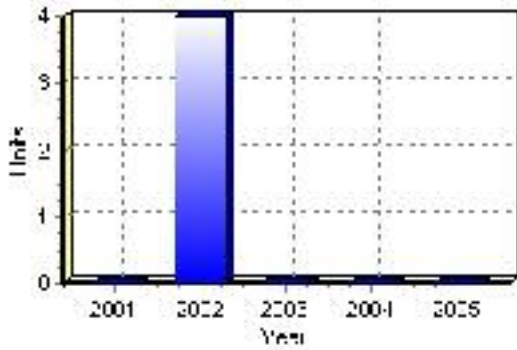
Source: Statistics Canada 1996 & 2001 Census (numbers may not add up due to rounding)

Building Permits

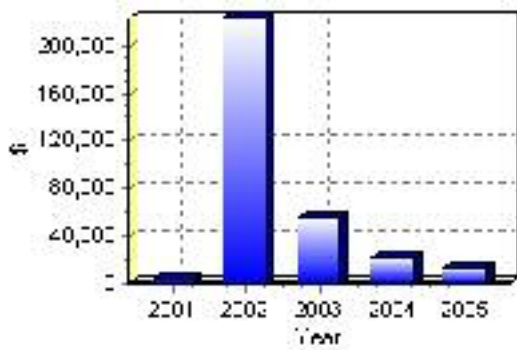
Total Building Permit Values	2001	2002	2003	2004	2005
Building Permits Value, Commercial	\$0	\$0	\$36,000	\$20,000	\$0
Building Permits Value, Industrial	\$0	\$0	\$0	\$0	\$0
Building Permits Value, Institutional	\$0	\$0	\$0	\$0	\$0
Building Permits Value, Residential	\$4,000	\$223,000	\$19,000	\$2,000	\$13,000
Building Permits Value, Total	\$4,000	\$223,000	\$55,000	\$22,000	\$13,000
Total Housing Starts	0	4	0	0	0

Source: Statistics Canada 2000-2004 Building Permits (numbers may not add up due to rounding)

Total Housing Starts



Value of Building Permits



Dwellings

Occupied Private Dwellings by Type	1996	% of total	2001	% of total
Apartments	0	0.00%	0	0.00%
Detached Duplexes	0	0.00%	0	0.00%
Movable Dwellings	15	8.57%	0	0.00%
Other single attached house	0	0.00%	0	0.00%
Row and semi-detached house	0	0.00%	0	0.00%
Single-detached house	155	88.57%	165	97.06%
Total number of occupied private dwellings	175	100.00%	170	100.00%
Private dwellings, owned	135	77.14%	165	97.06%
Private Dwellings, rented	35	20.00%	10	5.88%

Source: Statistics Canada 1996 & 2001 Census (numbers may not add up due to rounding)

Private Dwellings by Period of Construction	# of Dwellings	% of total
Period of construction, before 1946	50	28.57%
Period of construction, 1946 - 1960	85	48.57%
Period of construction, 1961 - 1970	10	5.71%
Period of construction, 1971 - 1980	20	11.43%
Period of construction, 1981 - 1990	10	5.71%
Period of construction, 1991 - 2001	0	0.00%
Total number of private dwellings constructed	175	100.00%

Source: Statistics Canada 2001 Census (numbers may not add up due to rounding)

Disclaimer: Information in this profile has been provided from a variety of external sources. Although every effort has been made to ensure the accuracy, currency and reliability of the content and data, AlbertaFirst.com Ltd. accepts no responsibility in this regard.

© AlbertaFirst.com Ltd., 2006.