

# Drumheller

[www.dinosaurvalley.com](http://www.dinosaurvalley.com)

## Welcome

The rich, rolling farmlands suddenly break away to reveal an astonishing, twisting, turning canyon, walled with multi-colored layers of sandstone, mudstone and coal alternating with shale sequences. The rock layers date back to the Late Cretaceous Period, just before the demise of the dinosaurs. Drumheller is located in the Heart of the **Canadian Badlands**. We are one the few areas in the world where the sedimentary layers from earlier time periods have been scraped off by natural processes, exposing a rich cache of fossils and even complete dinosaur skeletons.

Drumheller is a favorite destination for over 500,000 visitors each year. . We have over 50 attractions located within a 100 square kilometre area.

Today, the economy of Drumheller is fuelled by its booming tourism sector, vast agricultural industry, and large oil and gas interests, and by the spirit, energy, and ingenuity of our 7,800 citizens.

Drumheller offers the visitor and those contemplating taking up residence in the town a quality of life that has many larger city amenities but the pace and charm of a small town. The Town has an exciting history that goes back to the day when thousands of men worked underground in the coal mines, providing coal for a growing western Canada. Residential lots are reasonably priced for those wishing to build their home. For entrepreneurs, commercial and industrial lots are also available at reasonable prices. For those wishing to retire, no better area exists to be able to walk in comfort and safety. Come visit for a day, and you could stay for a lifetime.

For additional information, please visit our website at [dinosaurvalley.com](http://dinosaurvalley.com).

Yours very truly,

Paul Ainscough  
*Mayor of Drumheller*



## Area Overview

Drumheller is located in the "Badlands" in East Central Alberta and is home to the world-famous Royal Tyrrell Museum, one of the largest palaeontological museums in the world.

The area's moderate climate [average 2,490 hours of sunshine annually], excellent education and recreational facilities, easy access to major city amenities, lower cost of living and relaxed atmosphere make for an excellent quality of life for the Town's residents.

Agriculture, tourism, and oil & gas production and manufacturing make up the main economic base of the area. [The gross value of farm produce sold in the Drumheller area in 1991 was more than \$400 million.] Drumheller has a trading area population of approximately 30,000, and a population of approximately 1,000,000 within a 100 mile radius. Serviced municipal industrial parks with ample space are available in Drumheller. As well, numerous privately owned lots and buildings are available at very reasonable prices.

A full range of Federal, Provincial and Municipal services are available. There are also more than 40 non-governmental associations, service clubs and support groups, and more than 30 sports, recreation and social clubs. A complete directory of Community Services is available from the Town's Community Services Department.

## Community Services

### Municipal

[Town of Drumheller](#)  
703 - 2nd Avenue West  
Drumheller, Alberta  
T0J 0Y3

Tel: 403-823-6300  
Fax: 403-823-7739

### **Administrative Services**

Community Services  
Engineering and Transportation Services  
Economic Development and Tourism  
Public Library  
Building Inspector  
Building License  
Manager  
Handi-bus  
Landfill Site  
Mayor's Office  
Recycling Association  
Senior's Service  
Teen Centre

### **Provincial**

Agriculture  
Community Corrections  
Employment office  
Family and Social Services  
Fish & Wildlife  
Medical Examiner-Coroner Mental Health Clinic  
Public Works, Supply and Services  
Provincial Court Transportation Provincial Parks  
Royal Tyrrell Museum of Palaeontology

### **Federal**

Canada Post  
Solicitor General  
Agriculture and Agri-food Canada  
Royal Canadian Mounted Police  
Drumheller and District Community Futures

## **Community Lifestyle**

### **Recreation**

Local recreational facilities include the 2,500-seat Drumheller Memorial Arena, Drumheller Aquaplex, Drumheller Curling Rink, Drumheller Valley Ski Hill, 4 outdoor skating rinks, 14 ball diamonds, 3 tennis courts, 4 school gyms, a pathway system along the Red Deer River, an 18-hole golf course, 2 fitness centres, and a bowling lane.

Resort areas and parks include the Newcastle Beach Recreation Area, Midland Provincial Park, Community Parks (Nacmine, Rosedale, Wayne, Midland), and Riverview Park. In addition, there are numerous smaller parks throughout the Town (totalling over 150 acres) with the showpiece being a water fountain and spray park at Centennial Park which is one of Canada's highest.

Nearby provincial parks include Dry Island Buffalo Provincial Park and Little Fish Lake

Provincial Park. Campgrounds include River Grove Campground, Dinosaur Trailer Park, Dinosaur Trail R.V. Resort, Bleriot Ferry Campground, Kokopelli Campground and R.V. Park and 9 Community Campgrounds.

## **Community Organizations**

A full range of federal, provincial and municipal services are available in Drumheller. There are also more than 40 non-governmental associations, service clubs and support groups, and more than 30 sports, recreation and social clubs. A complete directory of Community Services are available from the Town of Drumheller Community Services Department.

Some organizations include the Alberta Senior Citizen Sport and Recreation Club, Aquadinnies Swim Club, Big Country Antique and Classic Auto Club, Big Country Swingers, Churchill Centre Community Association, Dinosaur Trail Golf & Country Club, Drumheller & District Shooters Association, Drumheller & District Teen Society, Drumheller Community Challenge, Drumheller Curling Club, Drumheller Teen Centre, First Drumheller Beavers, Cubs and Scouts, 4-H Clubs, Girl Guides of Canada, Knox Single-Group, Midland Community Association, Nacmine Recreation Association and Hall, Navy League, Navy League of Canada Society, Newcastle Recreation Association, Recreation Department - Town of Drumheller, Rosedale Community Hall, Sea Cadets, Seishin Karate Club, Sports Teams, Tai Chi, Valley Figure Skating, Wayne Community Association, Big Country Swingers, Painters Guild, and the Potter's Guild.

## **Religious Facilities**

Local religious facilities and groups include the Baha'i Faith, Bethany Lutheran Church, Catholic Woman's League, Church of Jesus Christ of Latter Day Saints, Church of the Nazarene, Dalum Lutheran Church, Delia Christian Fellowship, Drumheller Alliance Church, Drumheller Institutional Chaplains, Drumheller Ministerial Association, Elim Pentecostal Tabernacle, Fellowship Baptist Church, Grace Lutheran Church, Grace Lutheran Women's League, Jehovah's Witness Kingdom Hall, Knox United Church, Morrin United Church, Parkdale Baptist Church, Salvation Army, Seventh Day Adventist Church, St. Anthony's Catholic Church, St. Magloire's Anglican Church, United Church Women, and the Zion Baptist Church.

## **Special Annual Event/Attractions**

The world-famous Royal Tyrrell Museum is one of the largest palaeontological museums in the world. 4.5 billion years of the Earth's history is revealed, from the development of the planet to the emergence of dinosaurs, mammals and the living world today. Drumheller is also home to the World's Largest Dinosaur (over 80 feet). Other nearby museums include the Atlas Coal Mine Museum, Drumheller Valley Interpretive Centre (formerly known as Drumheller Dinosaur and Fossil Museum), East Coulee School Museum, and The Homestead Museum.

Local theatre groups include the Canadian Badlands Passion Play, Drumheller and Area Allied Arts Council, Kaleidoscope Theatre, and the Rosebud School of the Arts.

Annual Events:

Music Festival, March

Beethoven in the Badlands sponsored by Drumheller Rotary Club June

Passion Play July

July 1st Parade, July

Kaleidoscope Theatre - "Footloose" July 2005  
East Coulee Heritage Days, August  
Santa Claus Parade sponsored by Downtown Drumheller, December

## **Accommodation**

### Hotels & Motels

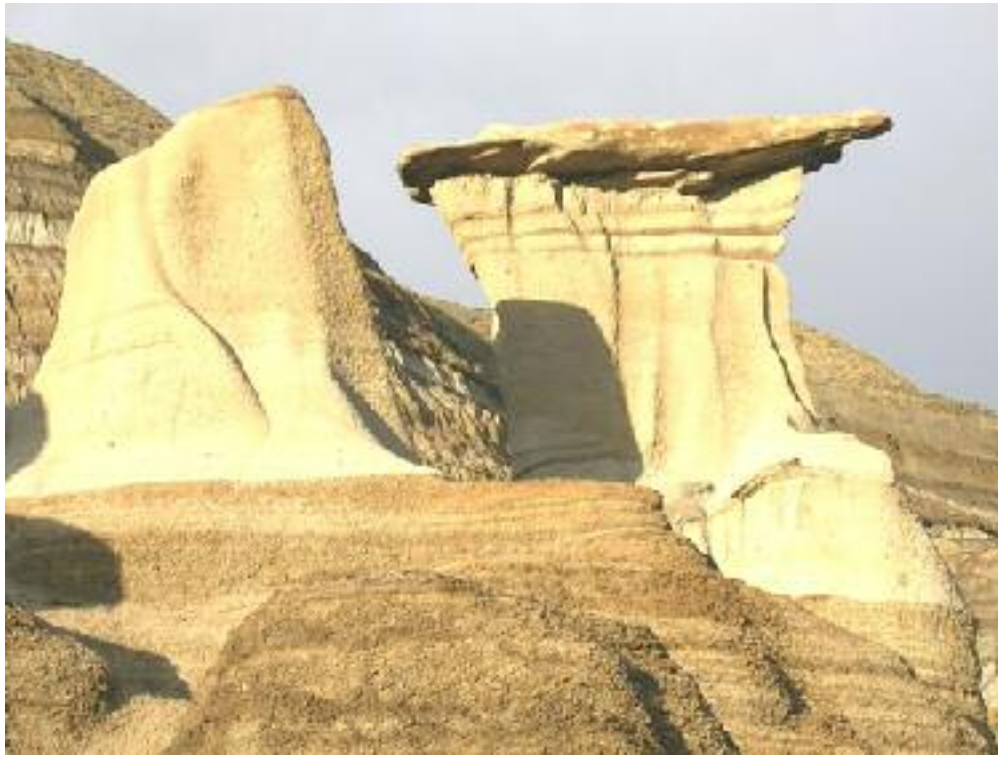
Badlands Motel  
Drumheller Inn Ltd.  
Hoodoo Motel  
Last Chance Saloon  
Travel Lodge Motor Inn  
Rosedale Hotel  
River Grove Cabins & Campground  
The Lodge at Drumheller  
New Waldorf Hotel  
Best Western Jurassic Inn  
Super 8 Motel  
East Coulee Motor Inn

### **Bed & Breakfasts & Country Inns**

Faith Haven  
Heartwood Manor  
McDougall Lane  
Newcastle Country Inn  
Pearl's "Cabin"  
River Bend  
Silver Fox Country Inn  
Taste the Past  
The Victorian House

### **Restaurants**

Drumheller boasts a wide range of dining experiences, including Boston Pizza, Athens Greek Restaurant - Steak and Pizza House, Cool Castle, Corner Stop Restaurant, Dairy Queen, Diana Restaurant, Dick's Place, Dino's Family Restaurant & Pizza, A & W Restaurant, Drumheller Inn, Fred & Barney's Family Restaurant, The Falcon, McDonald's, Pizza 249, Sizzling House, Smitty's Family Restaurant, Stavros Family Restaurant, Red's Sports Lounge, Subway, The Old Grouch, Whif's Flap Jack House, and Yavis Family Restaurant.



The Hoodoos

## Economic Base

The economic base of Drumheller consists of natural resources [oil, gas, coal], agriculture, tourism, service industry, hospital and the federal penitentiary.

The Town also has a very significant manufacturing base producing plastic goods.

## Economic Facts

### Major Businesses Products/Services

Royal Tyrrell Museum of Palaeontology [major employer]Museum  
Inland Plastics Plastics  
W. Ralston Canada Inc.  
Drumheller Institution [major employer] Penitentiary  
Oil and Gas Industry

### Financial Institutions

Alberta Treasury Branch  
Bank of Montreal  
Bank of Nova Scotia  
Canadian Imperial Bank of Commerce  
Chinook Credit Union  
Royal Bank  
Drumheller Regional Chamber of  
Development & Tourism (Community Futures/Business  
Development Centre)

## Education

Drumheller is part of the Golden Hills Regional School Division #15, headquartered in Strathmore [Tel: 403-934-5121], and the Christ Redeemer Catholic Separate Regional School Division, headquartered in Okotoks [Tel: 403-938-2659].

### Daycare/Nursery

Drumheller and District Family Day Home  
Time For Tot's Day Homes  
Hoo Doo Honey Bee Day Care  
Bedrock Playschool

### Public

Public schools in Drumheller include Greentree School [K-6], and Drumheller Composite High School [7-12].

### Separate

St. Anthony's School provides education for Grades K to 9.

### Private

N/A

## Emergency Services

### Fire Protection

Drumheller is served by a 50 member volunteer fire department [Emergencies dial 911] [Administration call 823-1300] operating 10 apparatus including 3 pumpers, 3 tankers, 1 - 105 aerial snorkel, rescue truck, 1 personnel carrier and a rescue boat. The Drumheller Fire Department operates out of three district halls, Rosedale, East Coulee and Drumheller.

### Police Services

Drumheller is served by a local detachment of the Royal Canadian Mounted Police [RCMP] [Emergencies dial 911] [Administration call 823-7590]. The Town detachment has 9 members [1 staff sergeant, 1 corporal and 7 constables], while the rural detachment has 4 members [1 corporal and 3 constables].

### Ambulance Services

Ambulance service is provided through the hospital [Emergencies dial 911] [Administration call 823-6500]. Ambulances are housed and dispatched from the hospital. The staff are volunteers who have been trained in Basic Life Support. The ambulance has a dedicated phone line answered by nursing staff who dispatch the ambulances as necessary. Helicopter ambulance service out of Calgary is utilized for critical transfers as required.

Drumheller also offers a co-ordinated 911 phone system for all emergency services.

## Health Care

Drumheller District Health Services operates under Regional Health Authority 4 which is headquartered in Red Deer. It is an integration of health services comprised of three main areas -- the hospital, continuing care (nursing home and auxiliary hospital), and

community health (public health) services.

The Drumheller hospital has 52 acute care beds and 110 continuing care beds. The complex provides primary, some secondary and geriatric care to residents of the Drumheller area. Services provided include emergency and outpatient care, medical, surgical, day surgery, pediatric, obstetric and newborn care, intensive care for cardiac and trauma. A broad range of diagnostic and therapeutic services are available including all support services. 24-hour coverage of physician and nursing care is provided.

The continuing care program offers respite care, palliative care and a day support program to assist families in the community who wish to keep their elderly at home as long as possible.

The Community Health branch provides services to Drumheller area residents and offers programs including community care (home care, Aids to Daily Living, speech language, pathology and respiratory care), environmental health services (environmental factors that may affect public health, community health nutrition, hereditary diseases programs). These services promote, protect, improve and maintain health within communities.

Our newly constructed \$35 million regional hospital which, was completed in early 2002, provides all of the above-mentioned services under one roof.

The Drumheller Physicians Clinic has 13 physicians practising, including 1 specialist in surgery, 1 specialist in internal medicine, 1 specialist in obstetrics and gynaecology, 4 physicians in anesthetics, and 6 physicians in family practice. A physician is on call 24 hours a day. The clinic also runs an out-patient department and a laboratory on site.

## Key Contacts for Business Development

### Municipal (Updated June/05)

Town of Drumheller  
703 - 2nd Avenue West  
Drumheller, Alberta  
T0J 0Y3  
Tel: 403-823-6300  
Fax: 403-823-8006  
e-mail: [cao@dinosaurvalley.com](mailto:cao@dinosaurvalley.com)  
web: [dinosaurvalley.com](http://dinosaurvalley.com)

Paul Ainscough  
Mayor  
E-mail: [mayor@dinosaurvalley.com](mailto:mayor@dinosaurvalley.com)

Raymond Romanetz  
Chief Administrative Officer  
Town of Drumheller  
Tel: (403) 823-1308  
Fax: (403) 823-8006  
E-mail: [rmroman@dinosaurvalley.com](mailto:rmroman@dinosaurvalley.com)

Scott Blevins



*Director of Community Services*  
Town of Drumheller  
Tel:(403)-823-1316  
Fax: (403) 823-7739  
E-mail:[sblevins@dinosaurvalley.com](mailto:sblevins@dinosaurvalley.com)

Ray Telford  
*Economic Development Officer*  
Town of Drumheller  
Tel: 403-823-1320  
Fax: 403-823-7739  
E-mail:[rtelford@dinosaurvalley.com](mailto:rtelford@dinosaurvalley.com)

Jerry Brett  
*Development Officer-Safety Codes*  
Town of Drumheller  
Tel:(403) 823-1310  
Fax:(403) 823-7739  
E-mail:[jbrett@dinosaurvalley.com](mailto:jbrett@dinosaurvalley.com)

Jean-Marc Lacasse  
*General Manager*  
Drumheller Regional Chamber of Development & Tourism  
P.O. Box 999  
Drumheller, Alberta  
T0J 0Y0  
Tel: (403) 823-8100  
Fax: (403) 823-4469  
E-mail:[jm.lacasse@drumhellerchamber.com](mailto:jm.lacasse@drumhellerchamber.com)

**Provincial (Updated May 2006)**

Walter Valentini  
*Regional Manager*  
Alberta Economic Development  
#300, 639 - 5th Avenue, SW  
Calgary, Alberta  
T2P 0M9  
Tel: 403-297-8920  
Fax: 403-297-6168  
E-mail:[walter.valentini@gov.ab.ca](mailto:walter.valentini@gov.ab.ca)  
E-mail:[dianne.fitzsimmons@gov.ab.ca](mailto:dianne.fitzsimmons@gov.ab.ca)

Hon. Shirley McClellan  
*Minister of Agriculture, Food, and Rural Development*  
Member of the Legislative Assembly [MLA]  
Drumheller-Chinook Constituency

Constituency Office  
Box 1386  
119 - 2nd Avenue West  
Hanna  
T0J 1P0  
Phone: (403) 854-4333

Fax: (403) 854-2812

[drumheller.stettler@assembly.ab.ca](mailto:drumheller.stettler@assembly.ab.ca)

Legislature Office

#224 Legislature Building

10800 - 97 Avenue

Edmonton

T5K 2B6

Phone: (780) 427-8809

Fax: (780) 428-1341

**Federal (Updated May 2006)**

Member of Parliament-Crowfoot, Alberta

SORENSEN, Kevin (Conservative)

Parliamentary Address

House of Commons

Ottawa, Ontario

K1A 0A6

Telephone: (613) 947-4608

Fax: (613) 947-4611

E-Mail: [Sorenson.K@parl.gc.ca](mailto:Sorenson.K@parl.gc.ca)

Constituency Address

4945 - 50th Street

Camrose, Alberta

T4V 1P9

Telephone: (780) 608-4600 1-800-665-4358

Fax: (780) 608-4603

TTY:

## Location

Distances from Drumheller

Calgary 138Km

Edmonton 279 Km

Banff 263 Km

Lethbridge 282 Km

Waterton 416 km

Vancouver 1114 Km

Saskatchewan Border 221 Km

BC Border 288 Km

USA Border 325 Km

Coutts 320 Km

Portland 1424 Km

## Post Secondary Education

Drumheller residents have access to post-secondary institutions in Red Deer, Calgary and Edmonton, and through the Big Country Educational Consortium.

# Taxation

---

	<u>Residential/Farmland</u>	<u>Non-Residential</u>
<b>2005</b>		
Municipal Tax Rate	11.5665	11.5665
Education - Alberta School Foundation Fund Tax Rate	4.5692	6.9002
Education Opted Out Tax Rate	4.5692	6.9002

---

## Mill Rates [2003]

Residential-(Public & Separate) 17.090

Non-Residential-(Public & Separate) 20.508

# Transportation

## Air Service

Drumheller maintains a local airport capable of handling small jet aircraft. An active leisure flying club and the Badlands Parachute Club also make the airport their base of operation.

## Rail Service

The Town of Drumheller is serviced by the main line of the C.N.R. from Calgary to Saskatoon (freight only).

## Highways

Highways 56, 9, 10 and Secondary Roads 570, 573, 575, 576, 838, 849, and 849 provide direct access to Drumheller.

## Trucking Firms

Drumheller is serviced by Hi-Way 9 Trucking Ltd. of Drumheller, a family owned operation. The firm has representation in Calgary, Edmonton, Red Deer, and services a large area of east central Alberta.

## Bus Services

Drumheller is serviced by Greyhound of Canada and the Saskatchewan Transportation Company. Service includes Calgary to Drumheller and Edmonton.

## Couriers and Taxis

Drumheller is serviced by all the major courier services, with local courier service that have working agreements with the majors. Purolator, Loomis, U.P.S., etc. Local M.I.K. Couriers.

**Drumheller company(s)** -- JB's Taxi, John's Taxi

Paratransit Services for the disabled and seniors is provided by the Valley Bus Society.

# Utilities

## Electrical Power

ATCO Electric Ltd.

180 - 3 Avenue West  
Drumheller, Alberta  
Tel: 403-823-3391

**Natural Gas**

ATCO Gas Ltd.

501 Premier Road  
Drumheller, Alberta  
Tel: 403-823-3002

**Telephone**

TELUS

Tel: 403-310-2255

**Television**

Shaw Cable

(800) 400-9605

Regional CableSystems

(800) 465-1000

**Water Supply**

The quality of water in the Drumheller Valley is excellent. The water treatment system has the capacity to serve 15,000 residents. The town also supplies other municipalities in the area with water.

Water usage rates for residential and commercial users is \$24.70 for the first 4,000 gallons plus \$4.85 per 1,000 gallons thereafter.

**Waste Management**

The Drumheller landfill site has a life expectancy of 50 years. Drumheller serves as the base for the Drumheller and District Solid Waste Management Association that services 20 municipalities and a population of 27,000.

The sewage rate for residential users is \$20.00 per month, while the sewage rate for commercial users ranges from \$22.00 to \$269.00 per month, depending on the class of business. Contact the Town of Drumheller for more details.

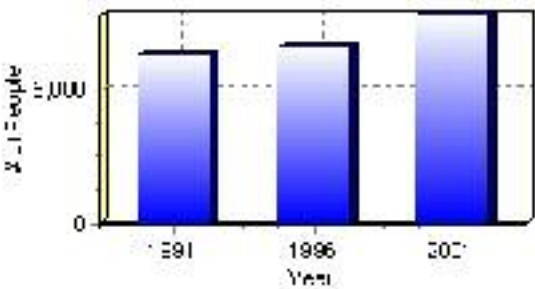
# Population

## Total Population

Population 2004*	7,785
Population 2003*	7,785
Population 2002*	7,785
Population 2001**	7,785
Population 2000*	7,833
Population 1996**	6,587
Population 1991**	6,277
Population % change 1991-1996	4.71%
Population % change 1996-2001	15.39%

\* Source: Official Population List, Alberta Municipal Affairs  
\*\* Source: Statistics Canada 1991, 1996, & 2001 Census

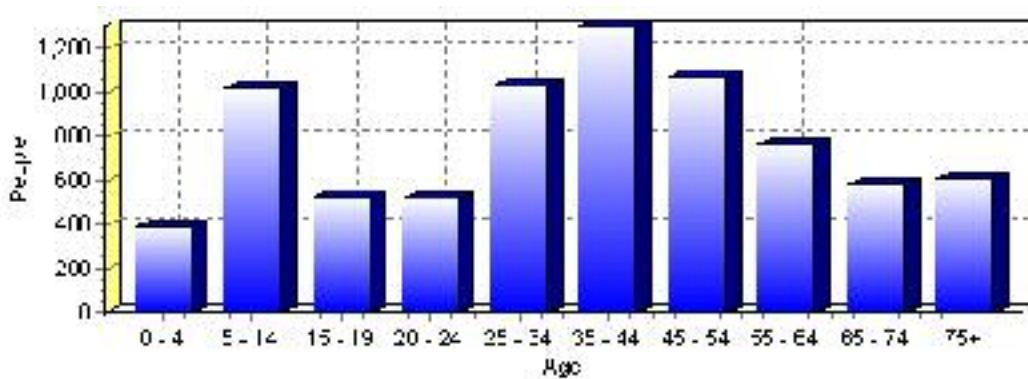
## Total Population 1991-2001



Population by Age and Gender	1996 Male	1996 Female	1996 Total	2001 Male	2001 Female	2001 Total
Age 0 - 4	195	185	380	205	185	390
Age 5 - 14	430	415	845	530	485	1,015
Age 15 - 19	180	200	380	260	265	525
Age 20 - 24	280	190	470	300	215	515
Age 25 - 34	670	430	1,100	605	425	1,030
Age 35 - 44	645	470	1,115	695	605	1,300
Age 45 - 54	375	345	720	560	515	1,075
Age 55 - 64	270	265	535	365	395	760
Age 65 - 74	215	280	495	285	295	580
Age 75 and older	185	355	540	210	395	605
Total All Persons	3,455	3,135	6,590	4,010	3,775	7,785

Source: Statistics Canada 1996 & 2001 Census (numbers may not add up due to rounding)

### Drumheller Population by Age Group (2001)



## Education Statistics

Highest level of schooling for Population 20yrs and older	2001	%
People without high school certificates	1,750	33.40%
People with high school certificates	695	13.26%
People with trades or non-university certificate or diploma	1,665	31.77%
People with post-secondary education (not completed)	550	10.50%
People with university diploma/certificate	95	1.81%
People with university degree	475	9.06%
Total Population 20 years and older	5,240	100.00%

Source: Statistics Canada 2001 Census (numbers may not add up due to rounding)

### Drumheller Highest Level of Schooling 2001



Population with Post Secondary Qualifications	1996	%	2001	%
Agriculture and biological sciences	115	6.91%	140	6.25%
Commerce, management and business administration	285	17.12%	380	16.96%
Educational, recreational and counseling services	210	12.61%	280	12.50%
Engineering and applied science tech. and trades	470	28.23%	605	27.01%
Engineering and applied sciences	0	0.00%	10	0.45%
Fine and applied arts	110	6.61%	85	3.79%
Health professionals, science and technologies	270	16.22%	385	17.19%
Humanities and related fields	70	4.20%	55	2.46%
Mathematics and physical sciences	10	0.60%	55	2.46%
Social sciences and related fields	120	7.21%	245	10.94%
Other and/or no specialization	0	0.00%	0	0.00%
Total people with post secondary qualifications	1,665	100.00%	2,240	100.00%
Females with post-secondary qualifications	840	50.45%	1,185	52.90%
Males with post-secondary qualifications	825	49.55%	1,055	47.10%

Source: Statistics Canada 1996 & 2001 Census (numbers may not add up due to rounding)

## Labour Force

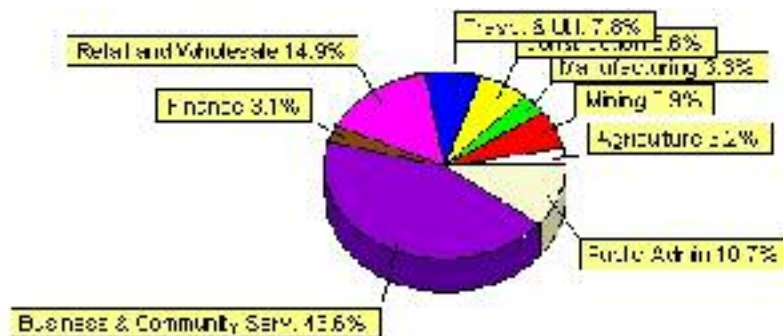
Labour force by activity	1996	2001
In the labour force, both sexes	3,175	3,925
Not in the labour force, both sexes	1,385	1,825
Total population 15 and over	4,560	5,745
Employed, both sexes	2,885	3,760
Unemployed, both sexes	290	165
Participation rate, both sexes	70.00%	68.00%
Unemployment rate, both sexes	9.00%	4.00%

Source: Statistics Canada 1996 & 2001 Census (numbers may not add up due to rounding)

Labour Force by Industry Division	1996	% of total	2001	% of total
Agriculture	75	2.40%	125	3.19%
Mining	220	7.03%	270	6.89%
Manufacturing	195	6.23%	130	3.32%
Construction	235	7.51%	260	6.63%
Transportation. & Utilities	235	7.51%	305	7.78%
Retail and Wholesale	495	15.81%	585	14.92%
Finance	125	3.99%	120	3.06%
Business & Community Services	1,380	44.09%	1,710	43.62%
Public Administration	370	11.82%	420	10.71%
Total All Industries	3,130	100.00%	3,920	100.00%

Source: Statistics Canada 1996 & 2001 Census (numbers may not add up due to rounding)

### Drumheller Labour Force By Industry - 2001



Labour Force by Major Occupational Groups	1996	%	2001	%
Management occupations	265	8.48%	345	8.80%
Business, Finances and administrative occupations	575	18.40%	560	14.29%
Natural and applied sciences and related occupations	85	2.72%	90	2.30%
Health occupations	165	5.28%	290	7.40%
Occupations in social science; education; government and religion	170	5.44%	320	8.16%
Occupations in art; culture; recreation and sport	100	3.20%	155	3.95%



Sales and service occupations	955	30.56%	1,080	27.55%
Trades; transport; equipment operators and related occupations	460	14.72%	640	16.33%
Occupations unique to primary industry	180	5.76%	230	5.87%
Occupations unique to processing; manufacturing and utilities	170	5.44%	210	5.36%
Occupations not elsewhere classified	50	1.60%	10	0.26%
Total - All Occupations (major groups)	3,125	100.00%	3,920	100.00%
Females - All Occupations	1,465	46.88%	1,810	46.17%
Males - All Occupations	1,660	53.12%	2,105	53.70%

Source: Statistics Canada 1996 & 2001 Census (numbers may not add up due to rounding)

---

## Income

<b>Family Income (Number of Families)</b>	<b>1996</b>	<b>%</b>	<b>2001</b>	<b>%</b>
less than \$19,999	70	5.19%	185	11.56%
\$20,000 - \$39,999	445	32.96%	435	27.19%
\$40,000 - \$59,999	355	26.30%	480	30.00%
\$60,000 and over	480	35.56%	535	33.44%
Total number of families	1,350	100.00%	1,635	102.19%
Average family income	\$56,235		\$60,306	
Median family income	\$50,853		\$55,429	

Source: Statistics Canada 1996 & 2001 Census (numbers may not add up due to rounding)

<b>Household Income (Number of Households)</b>	<b>1996</b>	<b>%</b>	<b>2001</b>	<b>%</b>
less than \$19,999	575	23.66%	615	20.26%
\$20,000 - \$39,999	800	32.92%	795	26.19%
\$40,000 - \$59,999	480	19.75%	605	19.93%
\$60,000 and over	150	6.17%	1,030	33.94%
Total number of households	2,430	100.00%	3,035	100.00%
Average household income	\$43,946		\$50,591	
Median household income	\$36,117		\$43,885	

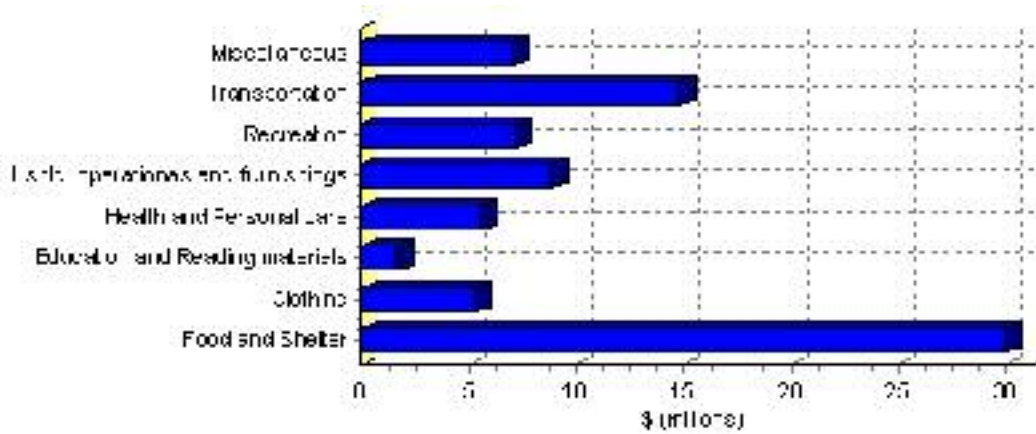
Source: Statistics Canada 1996 & 2001 Census (numbers may not add up due to rounding)

# Family Expenditure

Expenditure Category	1992	% of total	1996	% of total
Food and Shelter	\$25,626,540	37.30%	\$29,987,059	37.28%
Clothing	\$4,677,395	6.81%	\$5,263,098	6.54%
Education and Reading materials	\$1,440,855	2.10%	\$1,714,374	2.13%
Health and Personal care	\$4,280,090	6.23%	\$5,568,778	6.92%
Hshld. operations and furnishings	\$7,557,420	11.00%	\$8,891,822	11.06%
Recreation	\$5,588,675	8.13%	\$7,167,305	8.91%
Transportation	\$14,045,835	20.44%	\$14,800,593	18.40%
Miscellaneous	\$5,467,180	7.96%	\$7,034,054	8.75%
Total Current Consumption	\$68,709,735	100.00%	\$80,427,083	100.00%
Total # of Households	2,355		2,429	
Average Consumption per Household	\$29,176		\$33,111	

Source: Statistics Canada Family Expenditure Survey 1992 & 1996 (numbers may not add up due to rounding).

## Drumheller Family Expenditures (1996)

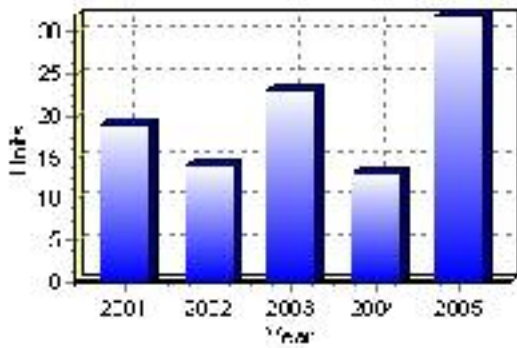


# Building Permits

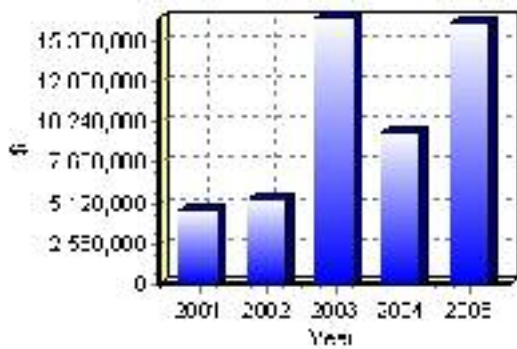
Total Building Permit Values	2001	2002	2003	2004	2005
Building Permits Value, Commercial	\$1,059,000	\$827,000	\$9,830,000	\$5,628,000	\$9,624,000
Building Permits Value, Industrial	\$845,000	\$430,000	\$945,000	\$793,000	\$2,445,000
Building Permits Value, Institutional	\$0	\$2,325,000	\$2,800,000	\$809,000	\$15,000
Building Permits Value, Residential	\$2,760,000	\$1,751,000	\$3,288,000	\$2,448,000	\$4,430,000
Building Permits Value, Total	\$4,664,000	\$5,333,000	\$16,863,000	\$9,678,000	\$16,514,000
Total Housing Starts	19	14	23	13	32

Source: Statistics Canada 2000-2004 Building Permits (numbers may not add up due to rounding)

## Total Housing Starts



## Value of Building Permits



## Dwellings

<b>Occupied Private Dwellings by Type</b>	<b>1996</b>	<b>% of total</b>	<b>2001</b>	<b>% of total</b>
Apartments	340	14.02%	345	11.37%
Detached Duplexes	25	1.03%	5	0.16%
Movable Dwellings	75	3.09%	90	2.97%
Other single attached house	10	0.41%	5	0.16%
Row and semi-detached house	175	7.22%	175	5.77%
Single-detached house	1,805	74.43%	2,425	79.90%
Total number of occupied private dwellings	2,425	100.00%	3,035	100.00%
Private dwellings, owned	1,650	68.04%	2,225	73.31%
Private Dwellings, rented	775	31.96%	810	26.69%

Source: Statistics Canada 1996 & 2001 Census (numbers may not add up due to rounding)

<b>Private Dwellings by Period of Construction</b>	<b># of Dwellings</b>	<b>% of total</b>
Period of construction, before 1946	760	25.04%
Period of construction, 1946 - 1960	390	12.85%
Period of construction, 1961 - 1970	500	16.47%
Period of construction, 1971 - 1980	700	23.06%
Period of construction, 1981 - 1990	400	13.18%
Period of construction, 1991 - 2001	285	9.39%
Total number of private dwellings constructed	3,035	100.00%

Source: Statistics Canada 2001 Census (numbers may not add up due to rounding)

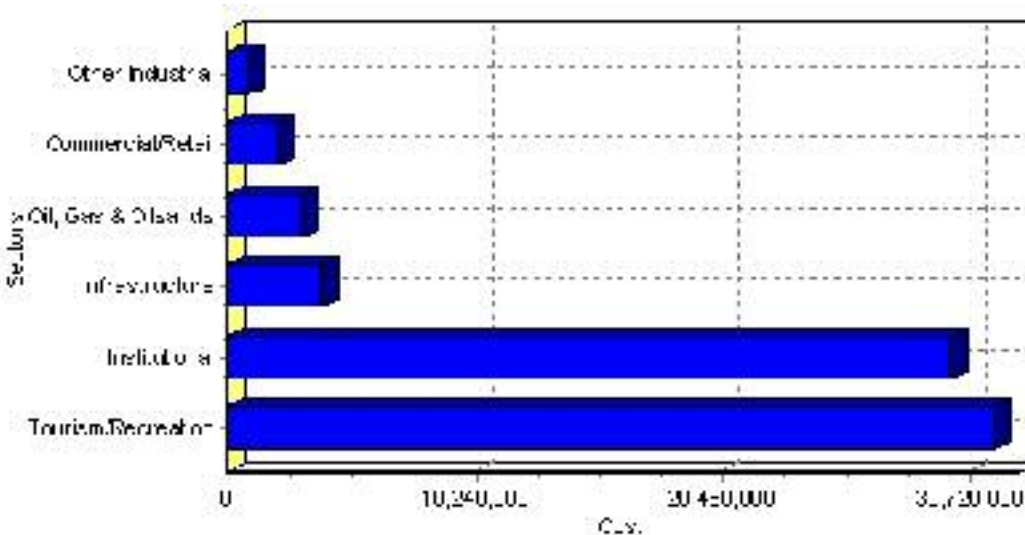
# Projects

## Summary of Projects in Drumheller as of September 2006

Project Sector	Number of Projects	Project Cost
Tourism/Recreation	2	\$31,700,000
Institutional	2	\$29,900,000
Infrastructure	2	\$3,880,000
Oil, Gas & Oilsands	1	\$3,100,000
Commercial/Retail	3	\$2,105,000
Other Industrial	1	\$850,000
Total	11	\$71,535,000

This inventory lists projects in Alberta that have recently been completed, are under construction, or are proposed to start construction. Not all projects are listed due to reasons of confidentiality and/or due to information not being available at the time of printing. Project data is obtained from public information sources, where possible, this data has been verified with the project proponent/developer, users of the Inventory may wish to confirm project data with the proponent/developer. The inventory does not breakdown project expenditures by any given year. The cost of a project is the value of expenditures expected over all phases of project construction, which may span over two or more years. Cost of projects listed in the Inventory are estimated values only. Source: Alberta Economic Development, 2004.

## Value of Projects by Sector (as of September 2006)



Project Status	Number of Projects	Project Cost
Completed	3	\$2,010,000
Nearing Completion	1	\$3,600,000
Proposed	6	\$62,825,000
Under Construction	1	\$3,100,000
Total	11	\$71,535,000

This inventory lists projects in Alberta that have recently been completed, are under construction, or are proposed to start construction. Not all projects are listed due to reasons of confidentiality and/or due to information not being available at the time of printing. Project data is obtained from public information sources, where possible, this data has been verified with the project proponent/developer, users of the Inventory may wish to confirm project data with the proponent/developer. The inventory does not breakdown project expenditures by any given year. The cost of a project is the value of expenditures expected over all phases of project construction, which may span over two or more years. Cost of projects listed in the Inventory are estimated values only. Source: Alberta Economic Development, 2004.

## Largest Projects in Drumheller as of September 2006

Company Name	Project Description	Project Location	Project Cost	Construction Schedule	Status
Alberta Infrastructure and Transportation*	School Consolidation	Drumheller	\$24,700,000	-	Proposed
Town of Drumheller	New Recreation Facility Phase 2	Drumheller	\$16,200,000	-	Proposed
Town of Drumheller	New Recreation Facility Phase 1	Drumheller	\$15,500,000	-	Proposed
Drumheller and District Seniors Foundation	Supportive Housing	Drumheller	\$5,200,000	-	Proposed
Town of Drumheller	Water Treatment Plant Upgrades	Drumheller	\$3,600,000	2006-2006	Nearing Completion
Trican	OFFICE / SHOP BUILDING	Drumheller	\$3,100,000	-	Under Construction
Canalta Real Estate Service	Restaurant	Drumheller	\$920,000	2006-2006	Completed
Boychuk Builders Ltd.	Industrial Building	Drumheller	\$850,000	-	Proposed
Harper Tire	Building	Drumheller	\$810,000	2006-2006	Completed
Fossil World Superstore	Retail Store	Drumheller	\$375,000	-	Proposed

Disclaimer: Information in this profile has been provided from a variety of external sources. Although every effort has been made to ensure the accuracy, currency and reliability of the content and data, AlbertaFirst.com Ltd. accepts no responsibility in this regard.

© AlbertaFirst.com Ltd., 2006.