

Lomond

Key Contacts for Business Development

Village of Lomond
PO Box 268
Lomond AB
T0L 1G0
Tel: (403)792-3611
Fax: (403)792-3300
voflom@telusplanet.net

Alvin Hendricks
Mayor

Tracy Doram
Chief Administrative Officer

PROVINCIAL

Honourable Barry McFarland
Member of the Legislative Assembly (MLA)
Little Bow Constituency
#410 Legislature Building
10800 - 97 Avenue
Edmonton AB
T5K 2B6
Tel: 780-427-0879
Fax: 780-422-0351

Constituency Office:
P.O. Box 231
111 Carman Street
Carmangay AB
Tel: 403-643-2077
Toll Free: 1-800-563-0917
Fax: 403-643-2024

FEDERAL

Ted Menzies
Member of Parliament
Macleod Constituency
House of Commons
Ottawa, Ontario
K1A 0A6
Tel: 613-995-8471
Fax: 613-996-9770

Constituency Office:
4925 1st Street West
P.O. Box 40

Claresholm, Alberta
T0L 0T0
Tel: 403-625-5532
Toll Free: 1-866-636-9437
Fax: 403-625-5592

Taxation

	<u>Residential/Farmland</u>	<u>Non-Residential</u>
2005		
Municipal Tax Rate	12.7690	15.4000
Education - Alberta School Foundation Fund Tax Rate	5.0930	7.7260
Seniors Lodge Accommodation Tax Rate	.1730	.1730

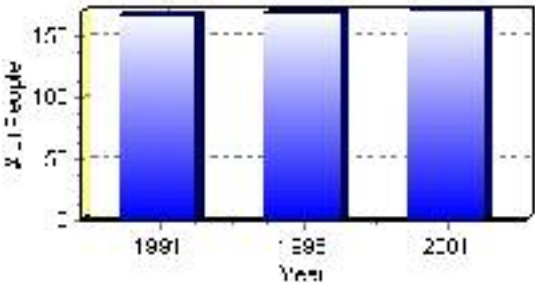
Population

Total Population

Population 2004*	171
Population 2003*	171
Population 2002*	171
Population 2001**	170
Population 2000*	170
Population 1996**	170
Population 1991**	167
Population % change 1991-1996	1.76%
Population % change 1996-2001	0.58%

* Source: Official Population List, Alberta Municipal Affairs
** Source: Statistics Canada 1991, 1996, & 2001 Census

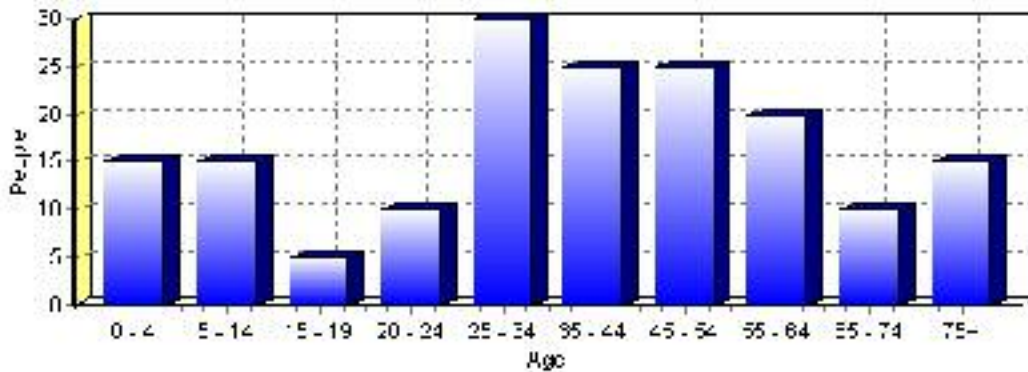
Total Population 1991-2001



Population by Age and Gender	1996 Male	1996 Female	1996 Total	2001 Male	2001 Female	2001 Total
Age 0 - 4	0	5	5	10	5	15
Age 5 - 14	20	10	30	10	5	15
Age 15 - 19	10	5	15	5	0	5
Age 20 - 24	5	5	10	5	5	10
Age 25 - 34	15	15	30	15	15	30
Age 35 - 44	20	10	30	15	10	25
Age 45 - 54	5	10	15	15	10	25
Age 55 - 64	5	5	10	10	10	20
Age 65 - 74	0	10	10	5	5	10
Age 75 and older	10	5	15	5	10	15
Total All Persons	90	80	170	90	80	170

Source: Statistics Canada 1996 & 2001 Census (numbers may not add up due to rounding)

Lomond Population by Age Group (2001)

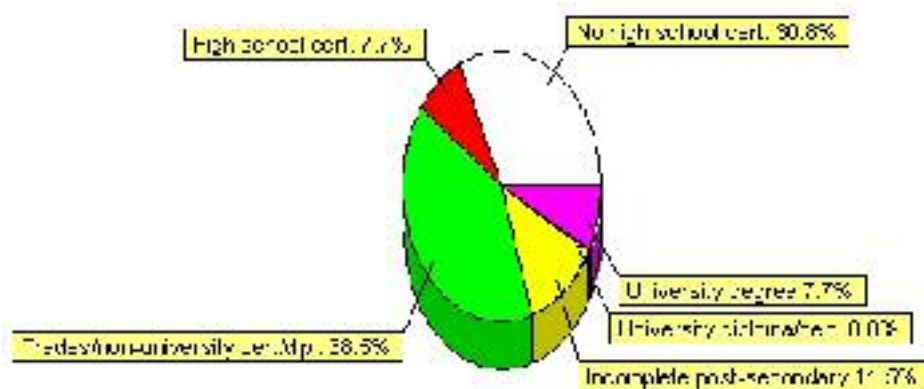


Education Statistics

Highest level of schooling for Population 20yrs and older	2001	%
People without high school certificates	40	30.77%
People with high school certificates	10	7.69%
People with trades or non-university certificate or diploma	50	38.46%
People with post-secondary education (not completed)	15	11.54%
People with university diploma/certificate	0	0.00%
People with university degree	10	7.69%
Total Population 20 years and older	130	100.00%

Source: Statistics Canada 2001 Census (numbers may not add up due to rounding)

Lomond Highest Level of Schooling 2001



Population with Post Secondary Qualifications	1996	%	2001	%
Agriculture and biological sciences	0	0.00%	10	15.38%
Commerce, management and business administration	20	44.44%	0	0.00%
Educational, recreational and counseling services	0	0.00%	20	30.77%
Engineering and applied science tech. and trades	15	33.33%	10	15.38%
Engineering and applied sciences	0	0.00%	0	0.00%
Fine and applied arts	0	0.00%	15	23.08%
Health professionals, science and technologies	0	0.00%	0	0.00%
Humanities and related fields	0	0.00%	0	0.00%
Mathematics and physical sciences	0	0.00%	0	0.00%
Social sciences and related fields	0	0.00%	0	0.00%
Other and/or no specialization	0	0.00%	0	0.00%
Total people with post secondary qualifications	45	100.00%	65	100.00%
Females with post-secondary qualifications	25	55.56%	35	53.85%
Males with post-secondary qualifications	20	44.44%	30	46.15%

Source: Statistics Canada 1996 & 2001 Census (numbers may not add up due to rounding)

Labour Force

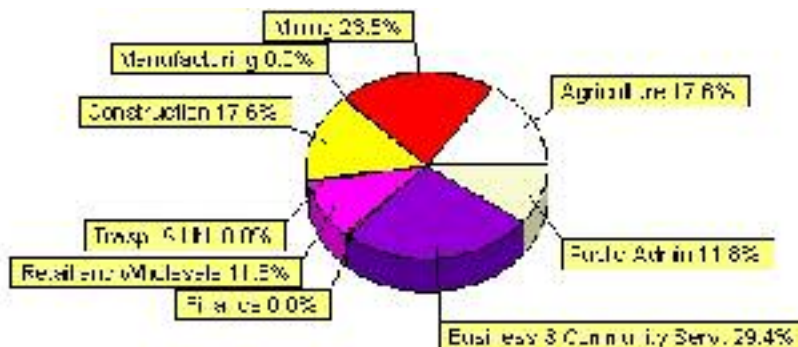
Labour force by activity	1996	2001
In the labour force, both sexes	80	85
Not in the labour force, both sexes	55	50
Total population 15 and over	135	135
Employed, both sexes	80	85
Unemployed, both sexes	0	0
Participation rate, both sexes	59.00%	63.00%
Unemployment rate, both sexes	0.00%	0.00%

Source: Statistics Canada 1996 & 2001 Census (numbers may not add up due to rounding)

Labour Force by Industry Division	1996	% of total	2001	% of total
Agriculture	15	18.75%	15	17.65%
Mining	20	25.00%	20	23.53%
Manufacturing	10	12.50%	0	0.00%
Construction	0	0.00%	15	17.65%
Transportation. & Utilities	10	12.50%	0	0.00%
Retail and Wholesale	10	12.50%	10	11.76%
Finance	0	0.00%	0	0.00%
Business & Community Services	20	25.00%	25	29.41%
Public Administration	10	12.50%	10	11.76%
Total All Industries	80	100.00%	85	100.00%

Source: Statistics Canada 1996 & 2001 Census (numbers may not add up due to rounding)

Lomond Labour Force By Industry - 2001



Labour Force by Major Occupational Groups	1996	%	2001	%
Management occupations	10	12.50%	10	11.76%
Business, Finances and administrative occupations	20	25.00%	15	17.65%
Natural and applied sciences and related occupations	0	0.00%	0	0.00%
Health occupations	0	0.00%	10	11.76%
Occupations in social science; education; government and religion	0	0.00%	10	11.76%
Occupations in art; culture; recreation and sport	0	0.00%	0	0.00%

Sales and service occupations	10	12.50%	0	0.00%
Trades; transport; equipment operators and related occupations	10	12.50%	15	17.65%
Occupations unique to primary industry	25	31.25%	30	35.29%
Occupations unique to processing; manufacturing and utilities	10	12.50%	0	0.00%
Occupations not elsewhere classified	0	0.00%	0	0.00%
Total - All Occupations (major groups)	80	100.00%	85	100.00%
Females - All Occupations	30	37.50%	35	41.18%
Males - All Occupations	50	62.50%	50	58.82%

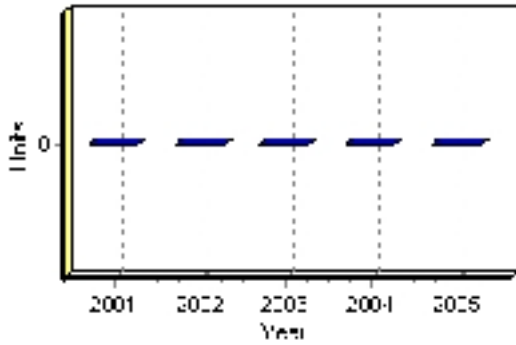
Source: Statistics Canada 1996 & 2001 Census (numbers may not add up due to rounding)

Building Permits

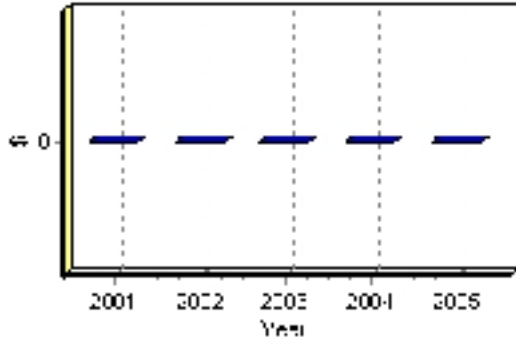
Total Building Permit Values	2001	2002	2003	2004	2005
Building Permits Value, Commercial	\$0	\$0	\$0	\$0	\$0
Building Permits Value, Industrial	\$0	\$0	\$0	\$0	\$0
Building Permits Value, Institutional	\$0	\$0	\$0	\$0	\$0
Building Permits Value, Residential	\$0	\$0	\$0	\$0	\$0
Building Permits Value, Total	\$0	\$0	\$0	\$0	\$0
Total Housing Starts	0	0	0	0	0

Source: Statistics Canada 2000-2004 Building Permits (numbers may not add up due to rounding)

Total Housing Starts



Value of Building Permits



Dwellings

Occupied Private Dwellings by Type	1996	% of total	2001	% of total
Apartments	0	0.00%	0	0.00%
Detached Duplexes	0	0.00%	0	0.00%
Movable Dwellings	20	25.00%	10	13.33%
Other single attached house	0	0.00%	0	0.00%
Row and semi-detached house	0	0.00%	10	13.33%
Single-detached house	55	68.75%	60	80.00%
Total number of occupied private dwellings	80	100.00%	75	100.00%
Private dwellings, owned	60	75.00%	45	60.00%
Private Dwellings, rented	20	25.00%	25	33.33%

Source: Statistics Canada 1996 & 2001 Census (numbers may not add up due to rounding)

Private Dwellings by Period of Construction	# of Dwellings	% of total
Period of construction, before 1946	25	35.71%
Period of construction, 1946 - 1960	25	35.71%
Period of construction, 1961 - 1970	0	0.00%
Period of construction, 1971 - 1980	20	28.57%
Period of construction, 1981 - 1990	0	0.00%
Period of construction, 1991 - 2001	0	0.00%
Total number of private dwellings constructed	70	100.00%

Source: Statistics Canada 2001 Census (numbers may not add up due to rounding)

Disclaimer: Information in this profile has been provided from a variety of external sources. Although every effort has been made to ensure the accuracy, currency and reliability of the content and data, AlbertaFirst.com Ltd. accepts no responsibility in this regard.

© AlbertaFirst.com Ltd., 2006.