

Girouxville

Welcome

Welcome to the Village of Girouxville. Girouxville is a small French Canadian Community, with a population of 367, located in the Smoky River Region. Full of history and culture, you'll find Girouxville a warm, welcoming community.



Key Contacts for Business Development

website:[Smoky River Region](#)

Provincial:

Hector Goudreau
Member of the Legislative Assembly (MLA)
Dunvegan-Central Peace Constituency
#513 Legislature Building
10800-97 Avenue
Edmonton AB
T5K 2B6
Tel: 780-415-9421
Fax: 780-427-1835

Constituency Office:

P.O. Box 1054
031- 1st Avenue SW
Falher AB
T0H 1M0
Tel: 780-837-3846
Toll Free: 1-866-835-4988
Fax: 780-837-3849

Federal:

Chris Warkentin
Member of Parliament (MP)
Peace River Constituency
House of Commons
Ottawa, Ontario
K1A 0A6
Tel: 613-992-5685

Fax: 613-947-4782

Constituency Office:

207 - 10605 West Side Drive

Grande Prairie AB T8V 8E6

Tel: 780-538-1677

Fax: 780-538-9257

E-mail: warkentin.c@parl.gc.ca

Website: www.chriswarkentin.ca

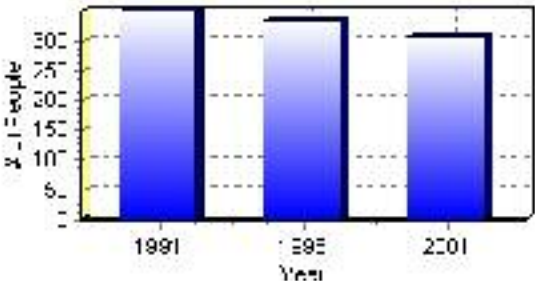
Population

Total Population

Population 2004*	306
Population 2003*	306
Population 2002*	306
Population 2001**	305
Population 2000*	332
Population 1996**	332
Population 1991**	349
Population % change 1991-1996	-5.12%
Population % change 1996-2001	-8.50%

* Source: Official Population List, Alberta Municipal Affairs
** Source: Statistics Canada 1991, 1996, & 2001 Census

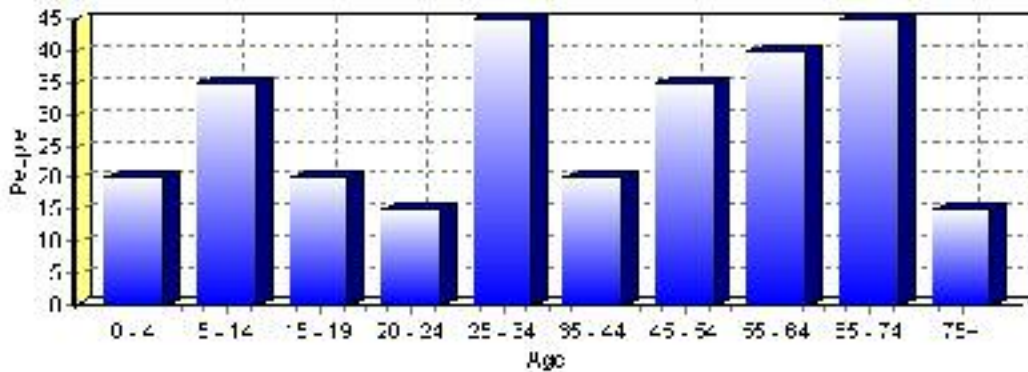
Total Population 1991-2001



Population by Age and Gender	1996 Male	1996 Female	1996 Total	2001 Male	2001 Female	2001 Total
Age 0 - 4	15	10	25	10	10	20
Age 5 - 14	25	30	55	20	15	35
Age 15 - 19	10	10	20	10	10	20
Age 20 - 24	10	15	25	5	10	15
Age 25 - 34	35	25	60	20	25	45
Age 35 - 44	25	10	35	10	10	20
Age 45 - 54	15	20	35	20	15	35
Age 55 - 64	25	20	45	15	25	40
Age 65 - 74	15	15	30	30	15	45
Age 75 and older	10	10	20	5	10	15
Total All Persons	165	165	330	155	150	305

Source: Statistics Canada 1996 & 2001 Census (numbers may not add up due to rounding)

Girouxville Population by Age Group (2001)

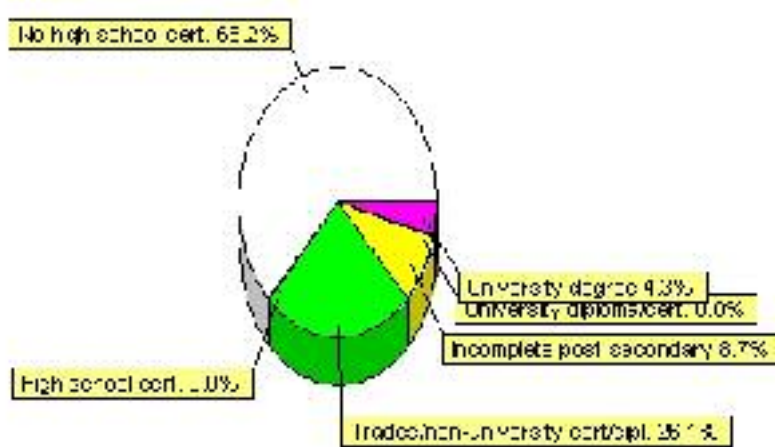


Education Statistics

Highest level of schooling for Population 20yrs and older	2001	%
People without high school certificates	150	65.22%
People with high school certificates	0	0.00%
People with trades or non-university certificate or diploma	60	26.09%
People with post-secondary education (not completed)	20	8.70%
People with university diploma/certificate	0	0.00%
People with university degree	10	4.35%
Total Population 20 years and older	230	100.00%

Source: Statistics Canada 2001 Census (numbers may not add up due to rounding)

Girouxville Highest Level of Schooling 2001



Population with Post Secondary Qualifications	1996	%	2001	%
Agriculture and biological sciences	0	0.00%	0	0.00%
Commerce, management and business administration	10	11.76%	25	35.71%
Educational, recreational and counseling services	20	23.53%	0	0.00%
Engineering and applied science tech. and trades	20	23.53%	45	64.29%
Engineering and applied sciences	0	0.00%	0	0.00%
Fine and applied arts	25	29.41%	0	0.00%
Health professionals, science and technologies	0	0.00%	0	0.00%
Humanities and related fields	0	0.00%	0	0.00%
Mathematics and physical sciences	0	0.00%	0	0.00%
Social sciences and related fields	0	0.00%	0	0.00%
Other and/or no specialization	0	0.00%	0	0.00%
Total people with post secondary qualifications	85	100.00%	70	100.00%
Females with post-secondary qualifications	30	35.29%	20	28.57%
Males with post-secondary qualifications	55	64.71%	50	71.43%

Source: Statistics Canada 1996 & 2001 Census (numbers may not add up due to rounding)

Labour Force

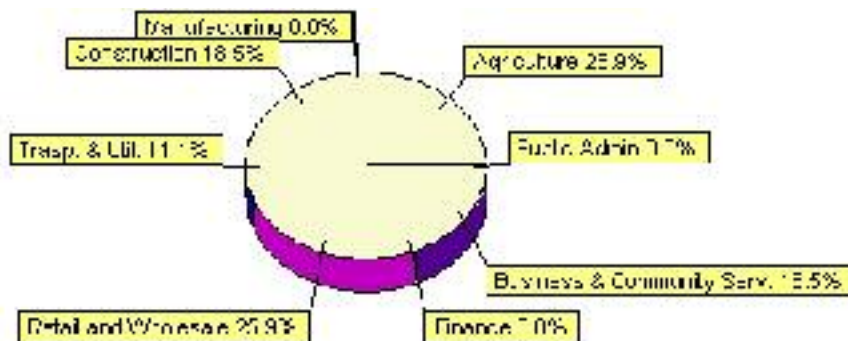
Labour force by activity	1996	2001
In the labour force, both sexes	155	140
Not in the labour force, both sexes	95	110
Total population 15 and over	255	250
Employed, both sexes	150	130
Unemployed, both sexes	0	10
Participation rate, both sexes	60.00%	56.00%
Unemployment rate, both sexes	0.00%	7.00%

Source: Statistics Canada 1996 & 2001 Census (numbers may not add up due to rounding)

Labour Force by Industry Division	1996	% of total	2001	% of total
Agriculture	20	12.90%	35	25.93%
Mining	10	6.45%	0	0.00%
Manufacturing	15	9.68%	0	0.00%
Construction	10	6.45%	25	18.52%
Transportation. & Utilities	10	6.45%	15	11.11%
Retail and Wholesale	40	25.81%	35	25.93%
Finance	0	0.00%	0	0.00%
Business & Community Services	55	35.48%	25	18.52%
Public Administration	0	0.00%	0	0.00%
Total All Industries	155	100.00%	135	100.00%

Source: Statistics Canada 1996 & 2001 Census (numbers may not add up due to rounding)

Girouxville Labour Force By Industry - 2001



Labour Force by Major Occupational Groups	1996	%	2001	%
Management occupations	15	9.68%	15	11.11%
Business, Finances and administrative occupations	0	0.00%	10	7.41%
Natural and applied sciences and related occupations	10	6.45%	0	0.00%
Health occupations	20	12.90%	10	7.41%
Occupations in social science; education; government and religion	10	6.45%	0	0.00%
Occupations in art; culture; recreation and sport	20	12.90%	0	0.00%

Sales and service occupations	30	19.35%	35	25.93%
Trades; transport; equipment operators and related occupations	30	19.35%	35	25.93%
Occupations unique to primary industry	25	16.13%	35	25.93%
Occupations unique to processing; manufacturing and utilities	0	0.00%	0	0.00%
Occupations not elsewhere classified	0	0.00%	10	7.41%
Total - All Occupations (major groups)	155	100.00%	135	100.00%
Females - All Occupations	55	35.48%	35	25.93%
Males - All Occupations	100	64.52%	95	70.37%

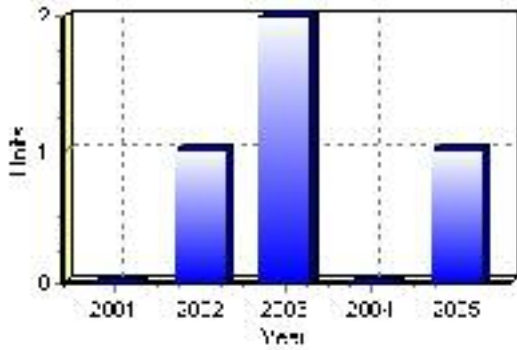
Source: Statistics Canada 1996 & 2001 Census (numbers may not add up due to rounding)

Building Permits

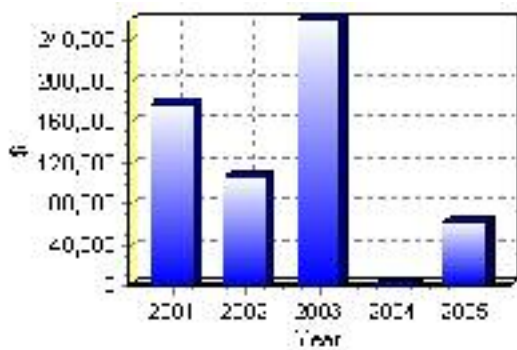
Total Building Permit Values	2001	2002	2003	2004	2005
Building Permits Value, Commercial	\$90,000	\$0	\$90,000	\$0	\$0
Building Permits Value, Industrial	\$70,000	\$0	\$0	\$0	\$0
Building Permits Value, Institutional	\$0	\$0	\$0	\$0	\$0
Building Permits Value, Residential	\$17,000	\$106,000	\$170,000	\$0	\$63,000
Building Permits Value, Total	\$177,000	\$106,000	\$260,000	\$0	\$63,000
Total Housing Starts	0	1	2	0	1

Source: Statistics Canada 2000-2004 Building Permits (numbers may not add up due to rounding)

Total Housing Starts



Value of Building Permits



Dwellings

Occupied Private Dwellings by Type	1996	% of total	2001	% of total
Apartments	0	0.00%	5	3.85%
Detached Duplexes	0	0.00%	0	0.00%
Movable Dwellings	0	0.00%	20	15.38%
Other single attached house	0	0.00%	0	0.00%
Row and semi-detached house	20	14.81%	10	7.69%
Single-detached house	115	85.19%	90	69.23%
Total number of occupied private dwellings	135	100.00%	130	100.00%
Private dwellings, owned	100	74.07%	95	73.08%
Private Dwellings, rented	40	29.63%	35	26.92%

Source: Statistics Canada 1996 & 2001 Census (numbers may not add up due to rounding)

Private Dwellings by Period of Construction	# of Dwellings	% of total
Period of construction, before 1946	25	20.83%
Period of construction, 1946 - 1960	20	16.67%
Period of construction, 1961 - 1970	0	0.00%
Period of construction, 1971 - 1980	65	54.17%
Period of construction, 1981 - 1990	10	8.33%
Period of construction, 1991 - 2001	0	0.00%
Total number of private dwellings constructed	120	100.00%

Source: Statistics Canada 2001 Census (numbers may not add up due to rounding)

Disclaimer: Information in this profile has been provided from a variety of external sources. Although every effort has been made to ensure the accuracy, currency and reliability of the content and data, AlbertaFirst.com Ltd. accepts no responsibility in this regard.

© AlbertaFirst.com Ltd., 2006.