

Strome

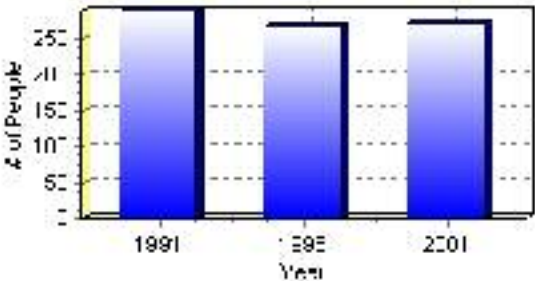
Population

Total Population

Population 2004*	273
Population 2003*	273
Population 2002*	273
Population 2001**	270
Population 2000*	269
Population 1996**	269
Population 1991**	290
Population % change 1991-1996	-7.81%
Population % change 1996-2001	1.47%

* Source: Official Population List, Alberta Municipal Affairs
** Source: Statistics Canada 1991, 1996, & 2001 Census

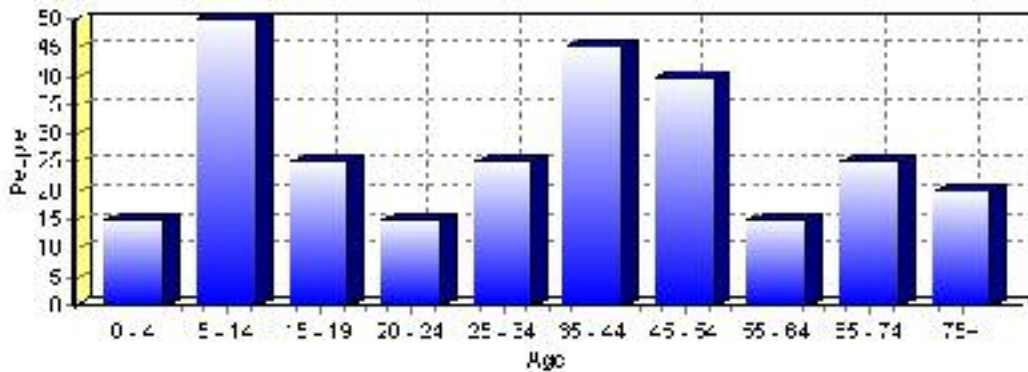
Total Population 1991-2001



Population by Age and Gender	1996 Male	1996 Female	1996 Total	2001 Male	2001 Female	2001 Total
Age 0 - 4	15	5	20	5	10	15
Age 5 - 14	10	25	35	30	20	50
Age 15 - 19	5	15	20	10	15	25
Age 20 - 24	5	5	10	10	5	15
Age 25 - 34	15	25	40	15	10	25
Age 35 - 44	30	15	45	25	20	45
Age 45 - 54	15	10	25	20	20	40
Age 55 - 64	5	5	10	10	5	15
Age 65 - 74	10	10	20	15	10	25
Age 75 and older	5	15	20	15	5	20
Total All Persons	135	135	270	145	125	270

Source: Statistics Canada 1996 & 2001 Census (numbers may not add up due to rounding)

Strome Population by Age Group (2001)

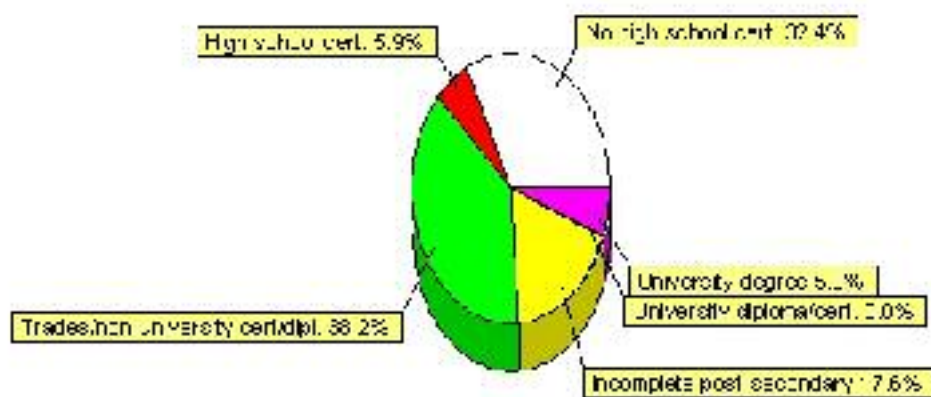


Education Statistics

Highest level of schooling for Population 20yrs and older	2001	%
People without high school certificates	55	32.35%
People with high school certificates	10	5.88%
People with trades or non-university certificate or diploma	65	38.24%
People with post-secondary education (not completed)	30	17.65%
People with university diploma/certificate	0	0.00%
People with university degree	10	5.88%
Total Population 20 years and older	170	100.00%

Source: Statistics Canada 2001 Census (numbers may not add up due to rounding)

Strome Highest Level of Schooling 2001



Population with Post Secondary Qualifications	1996	%	2001	%
Agriculture and biological sciences	10	13.33%	0	0.00%
Commerce, management and business administration	10	13.33%	10	14.29%
Educational, recreational and counseling services	20	26.67%	0	0.00%
Engineering and applied science tech. and trades	25	33.33%	10	14.29%
Engineering and applied sciences	0	0.00%	0	0.00%
Fine and applied arts	0	0.00%	0	0.00%
Health professionals, science and technologies	10	13.33%	30	42.86%
Humanities and related fields	10	13.33%	10	14.29%
Mathematics and physical sciences	0	0.00%	0	0.00%
Social sciences and related fields	0	0.00%	0	0.00%
Other and/or no specialization	0	0.00%	0	0.00%
Total people with post secondary qualifications	75	100.00%	70	100.00%
Females with post-secondary qualifications	35	46.67%	25	35.71%
Males with post-secondary qualifications	40	53.33%	45	64.29%

Source: Statistics Canada 1996 & 2001 Census (numbers may not add up due to rounding)

Labour Force

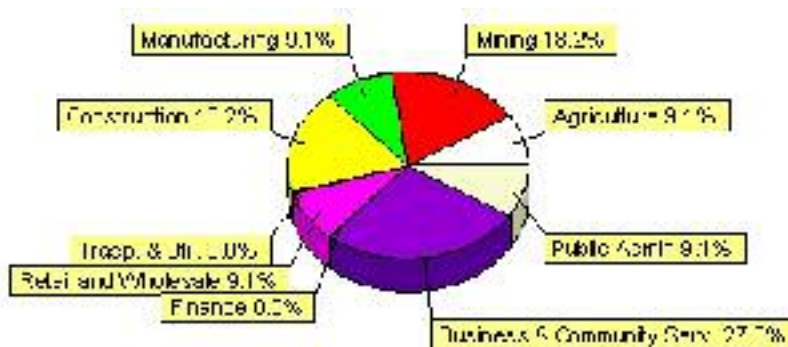
Labour force by activity	1996	2001
In the labour force, both sexes	130	115
Not in the labour force, both sexes	70	105
Total population 15 and over	200	215
Employed, both sexes	110	95
Unemployed, both sexes	15	20
Participation rate, both sexes	65.00%	54.00%
Unemployment rate, both sexes	11.00%	17.00%

Source: Statistics Canada 1996 & 2001 Census (numbers may not add up due to rounding)

Labour Force by Industry Division	1996	% of total	2001	% of total
Agriculture	25	19.23%	10	9.09%
Mining	10	7.69%	20	18.18%
Manufacturing	0	0.00%	10	9.09%
Construction	0	0.00%	20	18.18%
Transportation. & Utilities	25	19.23%	0	0.00%
Retail and Wholesale	30	23.08%	10	9.09%
Finance	0	0.00%	0	0.00%
Business & Community Services	45	34.62%	30	27.27%
Public Administration	10	7.69%	10	9.09%
Total All Industries	130	100.00%	110	100.00%

Source: Statistics Canada 1996 & 2001 Census (numbers may not add up due to rounding)

Strome Labour Force By Industry - 2001



Labour Force by Major Occupational Groups	1996	%	2001	%
Management occupations	0	0.00%	0	0.00%
Business, Finances and administrative occupations	25	19.23%	10	9.09%
Natural and applied sciences and related occupations	0	0.00%	0	0.00%
Health occupations	10	7.69%	0	0.00%
Occupations in social science; education; government and religion	0	0.00%	10	9.09%
Occupations in art; culture; recreation and sport	0	0.00%	0	0.00%

Sales and service occupations	30	23.08%	20	18.18%
Trades; transport; equipment operators and related occupations	25	19.23%	35	31.82%
Occupations unique to primary industry	30	23.08%	20	18.18%
Occupations unique to processing; manufacturing and utilities	10	7.69%	10	9.09%
Occupations not elsewhere classified	0	0.00%	10	9.09%
Total - All Occupations (major groups)	130	100.00%	110	100.00%
Females - All Occupations	55	42.31%	30	27.27%
Males - All Occupations	75	57.69%	80	72.73%

Source: Statistics Canada 1996 & 2001 Census (numbers may not add up due to rounding)

Dwellings

Occupied Private Dwellings by Type	1996	% of total	2001	% of total
Apartments	0	0.00%	0	0.00%
Detached Duplexes	0	0.00%	0	0.00%
Movable Dwellings	15	15.79%	10	9.52%
Other single attached house	10	10.53%	0	0.00%
Row and semi-detached house	0	0.00%	0	0.00%
Single-detached house	80	84.21%	90	85.71%
Total number of occupied private dwellings	95	100.00%	105	100.00%
Private dwellings, owned	95	100.00%	90	85.71%
Private Dwellings, rented	10	10.53%	15	14.29%

Source: Statistics Canada 1996 & 2001 Census (numbers may not add up due to rounding)

Private Dwellings by Period of Construction	# of Dwellings	% of total
Period of construction, before 1946	40	36.36%
Period of construction, 1946 - 1960	15	13.64%
Period of construction, 1961 - 1970	10	9.09%
Period of construction, 1971 - 1980	35	31.82%
Period of construction, 1981 - 1990	10	9.09%
Period of construction, 1991 - 2001	0	0.00%
Total number of private dwellings constructed	110	100.00%

Source: Statistics Canada 2001 Census (numbers may not add up due to rounding)

Disclaimer: Information in this profile has been provided from a variety of external sources. Although every effort has been made to ensure the accuracy, currency and reliability of the content and data, AlbertaFirst.com Ltd. accepts no responsibility in this regard.

© AlbertaFirst.com Ltd., 2006.