

# Granum

[www.townofgranum.ca](http://www.townofgranum.ca)

## Welcome

The friendliness of a small town smile and a wave awaits visitors to the town of Granum. Our town is conveniently located at the junction of the #2 and 519 Highways, east of the beautiful Porcupine Hills and is an excellent hub location, close to all major tourist sites in Southwest Alberta.

## Key Contacts for Business Development

### Town Office

Box 88  
Granum, Alberta  
T0L 1A0  
Phone 403-687-3822

*Mayor - Mike Sherman*  
*Chief Administrative Office - Shelley Henderson*

Honourable David Coumts (PC)  
*MLA for Livingstone-Macleod*

### Constituency Office

P.O. Box 69  
2115 - 2nd Avenue  
Fort Macleod, AB  
T0L 0Z0  
Phone: (403) 553-2400  
Toll Free: 1-800-565-0962  
Fax: (403) 553-2133  
[livingstone.macleod@assembly.ab.ca](mailto:livingstone.macleod@assembly.ab.ca)

### Legislature Office

#420 Legislature Building  
10800 - 97 Avenue  
Edmonton, AB  
T5K 2B6  
Phone: (780) 415-4815  
Fax: (780) 415-4818

MP-Macleod, Alberta  
MENZIES, Ted (Conservative)

### Parliamentary Address

House of Commons  
Ottawa, Ontario  
K1A 0A6  
Telephone: (613) 995-8471  
Fax: (613) 996-9770  
E-Mail: [Menzies.T@parl.gc.ca](mailto:Menzies.T@parl.gc.ca)

Constituency Address

4925 1st Street West, P.O. Box 40

Claresholm, Alberta

T0L 0T0

Telephone: (403) 625-5532 1-866-636-9437

Fax: (403) 625-5592

TTY:

E-Mail: [menziest@telus.net](mailto:menziest@telus.net)

## Taxation

---

	<u>Residential/Farmland</u>	<u>Non-Residential</u>
<b><u>2005</u></b>		
Municipal Tax Rate	14.0000	15.0000
Education - Alberta School Foundation Fund Tax Rate	4.4896	7.8619
Seniors Lodge Accommodation Tax Rate	.3094	.3094

---

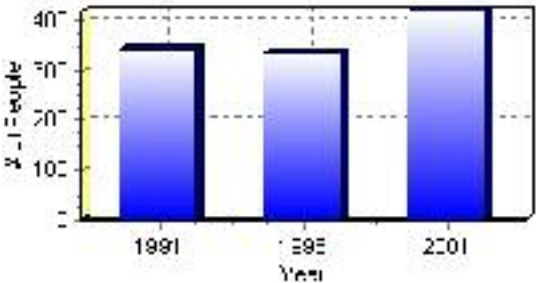
# Population

## Total Population

Population 2004*	420
Population 2003*	392
Population 2002*	392
Population 2001**	390
Population 2000*	379
Population 1996**	337
Population 1991**	343
Population % change 1991-1996	-1.78%
Population % change 1996-2001	14.03%

\* Source: Official Population List, Alberta Municipal Affairs  
\*\* Source: Statistics Canada 1991, 1996, & 2001 Census

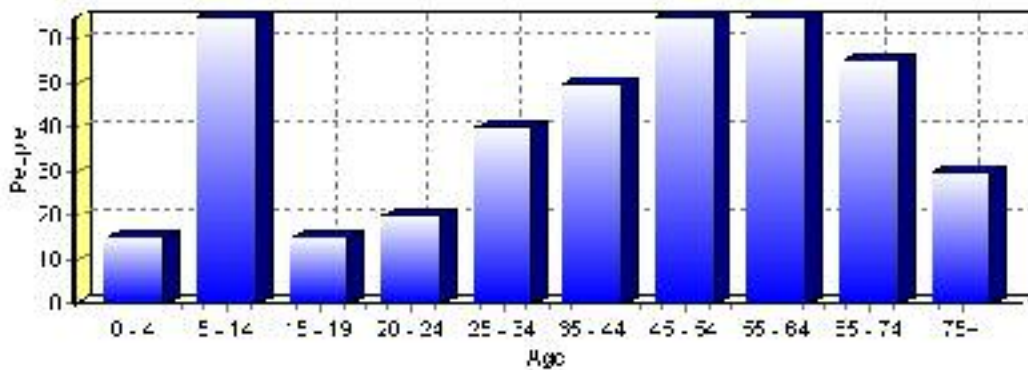
## Total Population 1991-2001



Population by Age and Gender	1996 Male	1996 Female	1996 Total	2001 Male	2001 Female	2001 Total
Age 0 - 4	5	15	20	5	10	15
Age 5 - 14	25	15	40	30	35	65
Age 15 - 19	10	10	20	10	5	15
Age 20 - 24	0	5	5	10	10	20
Age 25 - 34	20	15	35	20	20	40
Age 35 - 44	20	25	45	20	30	50
Age 45 - 54	30	30	60	35	30	65
Age 55 - 64	20	20	40	35	30	65
Age 65 - 74	30	25	55	30	25	55
Age 75 and older	20	10	30	10	20	30
Total All Persons	170	165	335	195	200	395

Source: Statistics Canada 1996 & 2001 Census (numbers may not add up due to rounding)

### Granum Population by Age Group (2001)

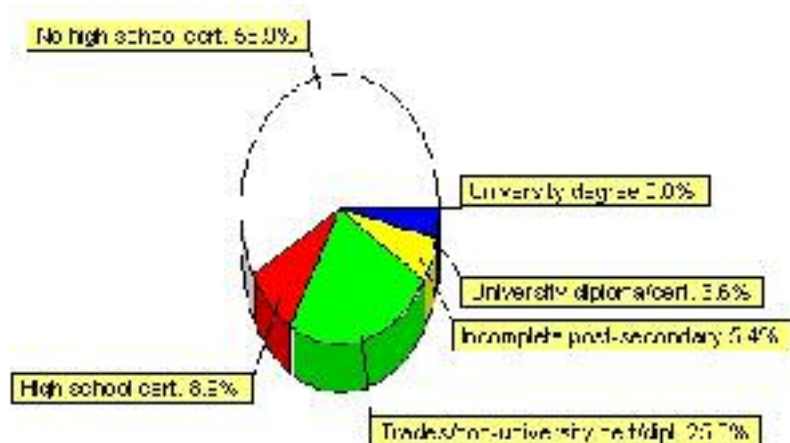


## Education Statistics

Highest level of schooling for Population 20yrs and older	2001	%
People without high school certificates	165	58.93%
People with high school certificates	25	8.93%
People with trades or non-university certificate or diploma	70	25.00%
People with post-secondary education (not completed)	15	5.36%
People with university diploma/certificate	10	3.57%
People with university degree	0	0.00%
Total Population 20 years and older	280	100.00%

Source: Statistics Canada 2001 Census (numbers may not add up due to rounding)

### Granum Highest Level of Schooling 2001



Population with Post Secondary Qualifications	1996	%	2001	%
Agriculture and biological sciences	0	0.00%	20	23.53%
Commerce, management and business administration	25	25.00%	45	52.94%
Educational, recreational and counseling services	20	20.00%	0	0.00%
Engineering and applied science tech. and trades	30	30.00%	15	17.65%
Engineering and applied sciences	0	0.00%	0	0.00%
Fine and applied arts	10	10.00%	10	11.76%
Health professionals, science and technologies	0	0.00%	10	11.76%
Humanities and related fields	10	10.00%	0	0.00%
Mathematics and physical sciences	0	0.00%	0	0.00%
Social sciences and related fields	10	10.00%	0	0.00%
Other and/or no specialization	0	0.00%	0	0.00%
Total people with post secondary qualifications	100	100.00%	85	100.00%
Females with post-secondary qualifications	55	55.00%	50	58.82%
Males with post-secondary qualifications	45	45.00%	35	41.18%

Source: Statistics Canada 1996 & 2001 Census (numbers may not add up due to rounding)

# Labour Force

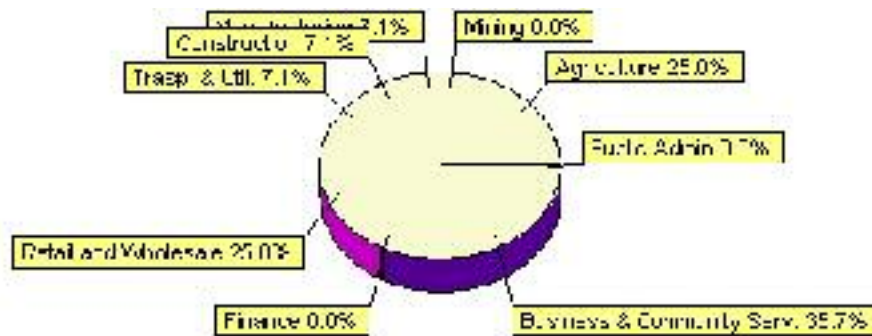
Labour force by activity	1996	2001
In the labour force, both sexes	195	140
Not in the labour force, both sexes	80	165
Total population 15 and over	275	310
Employed, both sexes	180	135
Unemployed, both sexes	20	10
Participation rate, both sexes	70.00%	45.00%
Unemployment rate, both sexes	10.00%	7.00%

Source: Statistics Canada 1996 & 2001 Census (numbers may not add up due to rounding)

Labour Force by Industry Division	1996	% of total	2001	% of total
Agriculture	20	10.81%	35	25.00%
Mining	0	0.00%	0	0.00%
Manufacturing	25	13.51%	10	7.14%
Construction	15	8.11%	10	7.14%
Transportation. & Utilities	10	5.41%	10	7.14%
Retail and Wholesale	20	10.81%	35	25.00%
Finance	10	5.41%	0	0.00%
Business & Community Services	75	40.54%	50	35.71%
Public Administration	0	0.00%	0	0.00%
Total All Industries	185	100.00%	140	100.00%

Source: Statistics Canada 1996 & 2001 Census (numbers may not add up due to rounding)

## Granum Labour Force By Industry - 2001



Labour Force by Major Occupational Groups	1996	%	2001	%
Management occupations	25	13.51%	20	14.29%
Business, Finances and administrative occupations	35	18.92%	35	25.00%
Natural and applied sciences and related occupations	0	0.00%	0	0.00%
Health occupations	10	5.41%	0	0.00%
Occupations in social science; education; government and religion	10	5.41%	10	7.14%
Occupations in art; culture; recreation and sport	0	0.00%	0	0.00%

Sales and service occupations	40	21.62%	30	21.43%
Trades; transport; equipment operators and related occupations	25	13.51%	10	7.14%
Occupations unique to primary industry	25	13.51%	35	25.00%
Occupations unique to processing; manufacturing and utilities	20	10.81%	0	0.00%
Occupations not elsewhere classified	10	5.41%	0	0.00%
Total - All Occupations (major groups)	185	100.00%	140	100.00%
Females - All Occupations	95	51.35%	65	46.43%
Males - All Occupations	90	48.65%	75	53.57%

Source: Statistics Canada 1996 & 2001 Census (numbers may not add up due to rounding)

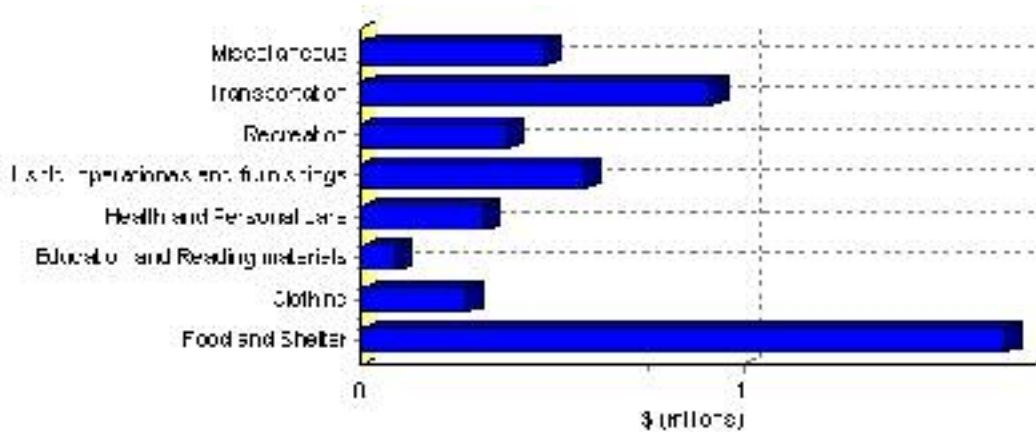
---

# Family Expenditure

Expenditure Category	1992	% of total	1996	% of total
Food and Shelter	\$1,475,365	37.91%	\$1,689,783	35.60%
Clothing	\$257,705	6.62%	\$278,842	5.87%
Education and Reading materials	\$76,790	1.97%	\$87,044	1.83%
Health and Personal care	\$244,665	6.29%	\$319,191	6.72%
Hshld. operations and furnishings	\$426,685	10.97%	\$589,126	12.41%
Recreation	\$303,300	7.79%	\$382,541	8.06%
Transportation	\$793,510	20.39%	\$918,613	19.35%
Miscellaneous	\$311,200	8.00%	\$481,211	10.14%
Total Current Consumption	\$3,891,285	100.00%	\$4,746,351	100.00%
Total # of Households	140		148	
Average Consumption per Household	\$27,795		\$32,070	

Source: Statistics Canada Family Expenditure Survey 1992 & 1996 (numbers may not add up due to rounding).

## Granum Family Expenditures (1996)





## Dwellings

<b>Occupied Private Dwellings by Type</b>	<b>1996</b>	<b>% of total</b>	<b>2001</b>	<b>% of total</b>
Apartments	15	10.00%	15	8.33%
Detached Duplexes	0	0.00%	5	2.78%
Movable Dwellings	0	0.00%	0	0.00%
Other single attached house	10	6.67%	0	0.00%
Row and semi-detached house	0	0.00%	0	0.00%
Single-detached house	125	83.33%	160	88.89%
Total number of occupied private dwellings	150	100.00%	180	100.00%
Private dwellings, owned	95	63.33%	135	75.00%
Private Dwellings, rented	50	33.33%	40	22.22%

Source: Statistics Canada 1996 & 2001 Census (numbers may not add up due to rounding)

<b>Private Dwellings by Period of Construction</b>	<b># of Dwellings</b>	<b>% of total</b>
Period of construction, before 1946	50	27.03%
Period of construction, 1946 - 1960	25	13.51%
Period of construction, 1961 - 1970	10	5.41%
Period of construction, 1971 - 1980	55	29.73%
Period of construction, 1981 - 1990	15	8.11%
Period of construction, 1991 - 2001	30	16.22%
Total number of private dwellings constructed	185	100.00%

Source: Statistics Canada 2001 Census (numbers may not add up due to rounding)

Disclaimer: Information in this profile has been provided from a variety of external sources. Although every effort has been made to ensure the accuracy, currency and reliability of the content and data, AlbertaFirst.com Ltd. accepts no responsibility in this regard.

© AlbertaFirst.com Ltd., 2006.