

# Hardisty

[www.hardisty.ca](http://www.hardisty.ca)

## Welcome



Welcome to Hardisty ! If you are traveling along Highway 13, you should really stop in and **Discover Hardisty**. Hardisty is located in East Central Alberta along Provincial Highway 13:

- 112 km east of Camrose
- 206 km south-east of Edmonton
- 110 km west of the Saskatchewan border
- 65 km South west from Wainwright and 40 Km West of Killam
- 52° 40" Latitude, 111° 18" Longitude. Elevation: 625 m (2050')

Discover Hardisty, a progressive urban community located in the scenic Battle River Valley. Rolling hills and farmlands that provide excellent habitat for native upland birds, whitetail and mule deer, moose and migrating ducks and geese surround the Town.

Hardisty a **Recreation Paradise**, offers a wide variety of activities for young and old alike:

- **Lake**: Its very own lake park with sandy beach, playground, 52 campsites (22 with full hookups) and various amenities.
- **Golf**: 9 hole grass green golf course and licensed clubhouse.
- Rodeo: Annual outdoor Rodeo featuring spectacular fireworks.
- Baseball - tournaments hosted on 3 ball diamonds.
- Soccer: New soccer field.
- Downhill Skiing: Downhill ski resort with day lounge.
- Cross-country Skiing: Marked trails around the Town, and the Golf course.
- Skating & Hockey: For all ages at our Arena.
- Curling: Curling rink with 3 sheets of ice, annual bonspiels.
- Annual Ice Carnival.
- Various card playing activities.
- **Public Library**
- **Community Hall** that hosts various evenings of Entertainment.

The business community is pleased to offer every service or goods you may require. There is a variety of businesses ranging from automotive service to restaurants and accommodations, groceries, health and beauty aids and medical assistance provide your everyday needs.

The Battle River also offers many activities for the outdoor enthusiast. Big game hunting, waterfowl flyway, or a hike in the hills. A canoe journey can start or end at Hardisty's other campground on the river.

## Town of Hardisty Council & CAO



Mayor  
Anita Miller

a.miller@hardisty.ca



Deputy Mayor  
Rick Manning

r.manning@hardisty.ca



Councilor  
Donna Buelow

d.buelow@hardisty.ca



Councilor  
Kelly Cailliau

k.cailliau@hardisty.ca



Councilor  
Diane Fossum

d.fossum@hardisty.ca



Councilor  
Sinclair F. Piller

s.piller@hardisty.ca



Councilor  
John Pioker

j.pioker@hardisty.ca



CAO  
Tony Kulbisky

tonvkcao@hardisty.ca

## Area Overview

The Town of Hardisty is a small urban community of approximately 740 people located in the scenic Battle River Valley on Highway 13. It is the centre of a hunter's paradise, with upland game, ducks and geese, mule and whitetail deer.

Hardisty Lake, which is in the Town limits, attracts many tourists from near and far. Hardisty is in the process of planning for future development and growth for their community.

Today, Hardisty is working towards revitalizing the Town as an attractive urban centre for living and working.

Hardisty appears to be a prime location for progressive development with lots of room for expansion of new businesses and industry.

## Climate

### CLIMATE

- Hardisty has a moderate climate that enjoys four seasons, including warm summers and mild winters.

## Community Services

### Municipal

Town Administration Office

Box 10  
Hardisty, Alberta  
T0B 1V0  
Tel: 780-888-3623  
Fax: 780-888-2200

Municipal Library

## **PROVINCIAL**

- Alberta Brand Inspection, Driver Examination

## **FEDERAL**

- Canada Post

# Community Lifestyle

## **RECREATION**

Hardisty has its own recreational paradise, that being Hardisty Lake. Approximately 320 acres are designated for recreation, which includes a sandy beach, camping facilities, a 9-hole grass-green golf course, three ball diamonds and stampede grounds. The lake is used for boating and swimming. Hardisty offers a regulation size soccer field (pitch) with bleachers. Other outdoor facilities include the Hardisty Trailer Court, Hardisty Campsite, and Fish Lake.

Hardisty also has a large recreation centre, consisting of a regulation sized arena, and a 3-sheet curling rink. In the winter, there are miles of cross-country ski trails through the lake park and along the banks of the Battle River. For the sportsman, upland game, geese, ducks, mule and whitetail deer are plentiful. Hunters from miles around come to the district for their limits.

One of the newest assets in the community is the Aspen Heights Ski Hill. Located 11 km south of Hardisty, Aspen Heights features a double chair lift which takes you to the top and gives you the choice of skiing down one of six runs (including snowboard runs)

The new Community Centre has a seating capacity of 430, which can be used for various functions. Hardisty also has a fine library.

## **COMMUNITY ORGANIZATIONS**

Hardisty has a wide range of community/recreation groups, including Toddler Inn Playschool, Communities in Bloom, Library Board, Senior's Social Club, Legion, ECS (Kindergarten), Unifarm Ladies, K-Club, Parent Advisory, School Council, Community Hall Board, Elks, Royal Purple, Hospital Auxiliary, Bridge Club, Battle River Light Horse Association, Agricultural Society, Senior Citizens Apartment Board, Healthy Communities, Physician Recruitment, Cemetery Committee.

Sports clubs include the Figure Skating Club, Cross Country Ski Club, Rodeo Association, Golf Club, Curling Club, Trap Club, Ball Association, Minor Hockey, Nordic Ski Club, Soccer Association, Ski-Board Club, Boxing Club and various dance clubs.

## **RELIGIOUS SERVICES**

- Hardisty Messianic Congregation
- United Church of Canada

## **SPECIAL ANNUAL EVENTS/ATTRACTIONS**

- Family Day Celebration - 3rd Monday in Feb
- Rodeo Weekend -- 1st in July
- Ball Tournament - 4th week in August

## **ACCOMODATIONS**

- Hardisty Inn
- Hardisty Motel

## **RESTAURANTS**

- ENG'S Dining Lounge
- Close 2 Home Restaurant
- Hardisty Lakeview Golf Club (seasonal)
- Hardisty Pizza and Pub
- JB Subway (Mohawk)

## **Economic Base**

Hardisty's major industry is oil and gas. In addition, Hardisty is surrounded by a good agricultural area for mixed farming of cattle and various types of grain. Tourism is also a factor in the Town's development.

Hardisty is situated in a rural, natural setting, and has a variety of advantages for business. Its natural resources of unlimited water, natural gas and good farmland are all assets to the Town. Hardisty has a lot of room for expansion of new businesses and industry.

## **Economic Facts**

Hardisty has major companies located nearby, namely Enbridge Pipelines, which has the most easterly oil terminal in Alberta, Gibsons Petroleum Tank Farm, which holds crude oil delivered by numerous pipelines, Flint Hill Resources, Husky, Terasen, Inter Pipeline, CCS and EnCana.

### **Major Businesses Products/Services**

- Terasen
- Enbridge Pipelines
- Express Pipelines
- Gibson Petroleum Co. - Crude Oil Holding Tanks
- Husky Energy Operations
- Hardisty Health Centre - Emergency Service, Long-term care
- Koch Petroleum
- EnCana
- Rempel Chevrolet Oldsmobile

### **Financial Institutions**

- Canadian Imperial Bank of Commerce (24hr Instant Teller)
- Alberta Treasury Branch - Agent
- Wainwright Credit Union (24hr Instant Teller)

## **Education**

Hardisty is a part of the Battle River Regional School Division #31, headquartered in Camrose [tel: 780-672-6131].

### **PUBLIC**

- Allan Johnstone School [1-9] provides elementary and junior high school education to Hardisty. Senior high school students are

bused to Central High Sedgewick Public School [10-12], located in Sedgewick.

### **SEPARATE**

-N/A

### **PRIVATE**

-Hardisty Early Childhood Services (Kindergarten), Toddlers Inn Playschool

## **Emergency Services**

### **FIRE PROTECTION**

- Hardisty is part of the County of Flagstaff Fire Agreement and Municipal District of Provost Fire Services Agreement. The local volunteer fire department has approximately 20 members, two trucks and a rescue unit. **[Tel: 911]**

### **POLICE SERVICES**

- Hardisty is served by the Killam detachment of the Royal Canadian Mounted Police [RCMP]. **[Tel: 780-385-3502]**

**AMBULANCE SERVICES** - Local ambulance service is available. **[Tel: 911]**

## **Health Care**

The Hardisty Health Care Center has 15 acute care beds and 5 long-term care beds. Hardisty also has a medical clinic, a health unit, a dental mechanic who serves Hardisty once a week, a drug store, chiropractor, and home care services.

## **Key Contacts for Business Development**

### **Municipal (Updated October, 2004)**

Town of Hardisty

Box 10

Hardisty, Alberta

T0B 1V0

Tel: 780-888-3623

Fax: 780-888-2200

E-mail: [town.office@hardisty.ca](mailto:town.office@hardisty.ca)

*Mayor*

Anita Miller

*CAO*

Tony Kulbisky

### **Provincial (Updated December 2006)**

Alberta Economic Development

Allan Walkey, Regional Manager

[allan.walkey@gov.ab.ca](mailto:allan.walkey@gov.ab.ca)

Dale Beddoes, Client Services Representative

[dale.beddoes@gov.ab.ca](mailto:dale.beddoes@gov.ab.ca)

5005 - 49 Street

Camrose, Alberta

T4V 1N5

Tel: 780-679-1235

Fax: 780-679-1250

Doug Griffiths  
Member of the Legislative  
Assembly [MLA] Wainwright

Constituency Constituency  
Office #201, 1006 - 4 Avenue  
Wainwright  
T9W 2R3  
Phone: (780) 842-6177  
Fax: (780) 842-3171  
[battleriver.wainwright@assembly.ab.ca](mailto:battleriver.wainwright@assembly.ab.ca)

**Legislature Office**

#130 Legislature Building 10800-97 Avenue Edmonton T5K 2B6 Phone: (780) 422-5369 Fax: (780) 422-5385

**Federal (Updated 2006)**

Leon Benoit, MP  
Vegreville-Wainwright

Constituency Office:  
P.O. Box 300  
Mannville, Alberta  
T0B 2W0  
Phone: f(780) 763-6130 or 1-800-463-1194  
Fax: (780) 763-6132  
E-mail: [benoil1@parl.gc.ca](mailto:benoil1@parl.gc.ca)  
<http://www.leonbenoit.ca/index.html>

## Location

The Town of Hardisty is located in the County of Flagstaff #29, in east-central Alberta, at the junction of Highway 13 and Secondary Highway 881. It is approximately 100 km southeast of Camrose.

## Post Secondary Education

N/A

## Taxation

Mill Rates [2004]

Residential - Public 15.4719 - 20.3715  
Residential - Separate N/A  
Non-Residential - Public 23.7192  
Non-Residential - Separate N/A

---

	<u>Residential/Farmland</u>	<u>Non-Residential</u>
<b>2005</b>		
Municipal Tax Rate	14.1800	14.1850
Education - Alberta School Foundation Fund Tax Rate	5.0110	8.0392

## Transportation

### AIR SERVICES

- The local airport has a paved and lighted 3,000 foot runway, NDB Tower and remote lighting system.

### RAIL SERVICES

- Hardisty is served by Canadian Pacific Railway. The Hardisty station is the only station open from Edmonton to Wilkie, Saskatchewan.

### HIGHWAYS

- Connecting highways are Highway 13 [west to Camrose east to Saskatchewan] and Secondary Highway 881[north to Wainwright via Highway 14].

### TRUCKING FIRMS

- Express 2000
- Hardisty Hauling
- Highway No. 13 Express
- Gibson Petroleum
- Highway No. 9

### BUS SERVICES

- Greyhound Bus Lines provides regularly scheduled inter-community service. Bi-West Tours and Hardisty Handy Van also provide special trips.

**COURIERS** - Greyhound Courier Express, Priority Post, DHL (Loomis), Purolator

## Utilities

### ELECTRICAL POWER

- Epcor Energy Services
- Tel: 310-4300, Fortis
- Tel: 310-9473 or 310-WIRE

### NATURAL GAS

- ATCO Gas
- Tel: 310-5678

### TELEPHONE

- Telus
- Tel: 780-310-2255

### WATER SUPPLY

- Water is supplied by four wells and is pumped into a 500,000 gallon reservoir, then into the water mains. Water is now treated for iron and manganese with a greensands filtration system.

### WASTE MANAGEMENT

-Solid waste removal services are provided by the Flagstaff Regional Solid Waste Management Association.

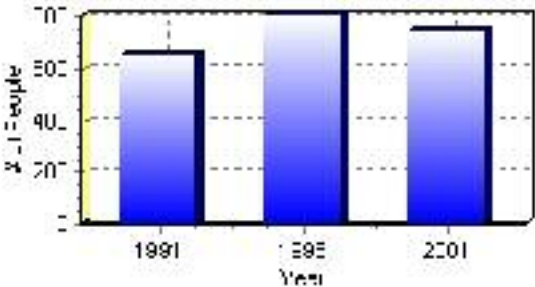
# Population

## Total Population

Population 2004*	743
Population 2003*	743
Population 2002*	743
Population 2001**	745
Population 2000*	808
Population 1996**	808
Population 1991**	656
Population % change 1991-1996	18.81%
Population % change 1996-2001	-8.75%

\* Source: Official Population List, Alberta Municipal Affairs  
\*\* Source: Statistics Canada 1991, 1996, & 2001 Census

## Total Population 1991-2001

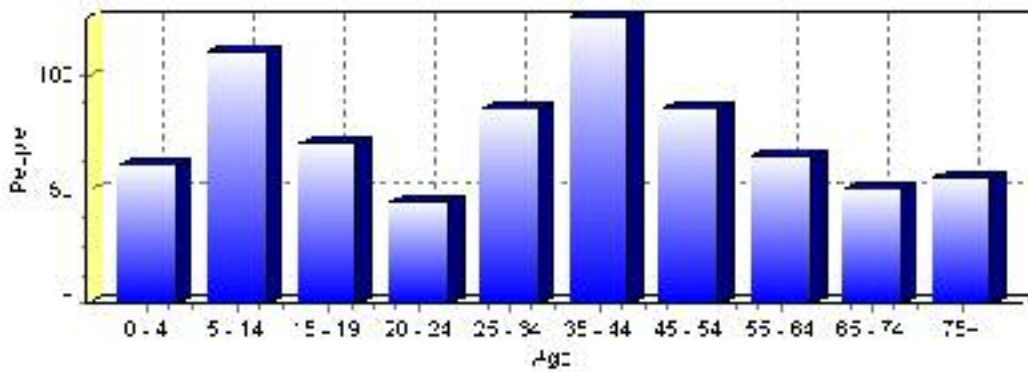




Population by Age and Gender	1996 Male	1996 Female	1996 Total	2001 Male	2001 Female	2001 Total
Age 0 - 4	30	35	65	30	30	60
Age 5 - 14	55	75	130	40	70	110
Age 15 - 19	30	20	50	30	40	70
Age 20 - 24	25	25	50	20	25	45
Age 25 - 34	70	80	150	45	40	85
Age 35 - 44	75	60	135	65	60	125
Age 45 - 54	40	25	65	50	35	85
Age 55 - 64	30	25	55	35	30	65
Age 65 - 74	15	30	45	20	30	50
Age 75 and older	35	30	65	15	40	55
Total All Persons	395	410	805	350	390	740

Source: Statistics Canada 1996 & 2001 Census (numbers may not add up due to rounding)

### Hardisty Population by Age Group (2001)

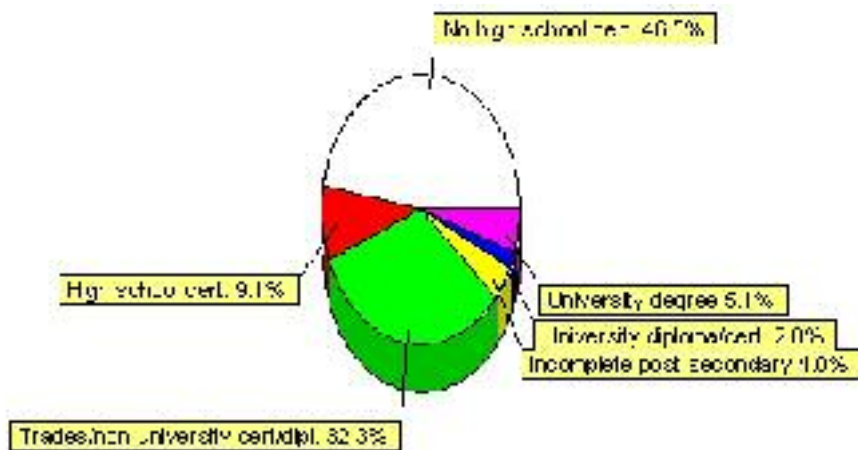


## Education Statistics

Highest level of schooling for Population 20yrs and older	2001	%
People without high school certificates	230	46.46%
People with high school certificates	45	9.09%
People with trades or non-university certificate or diploma	160	32.32%
People with post-secondary education (not completed)	20	4.04%
People with university diploma/certificate	10	2.02%
People with university degree	25	5.05%
Total Population 20 years and older	495	100.00%

Source: Statistics Canada 2001 Census (numbers may not add up due to rounding)

### Hardisty Highest Level of Schooling 2001



Population with Post Secondary Qualifications	1996	%	2001	%
Agriculture and biological sciences	0	0.00%	10	4.88%
Commerce, management and business administration	20	10.53%	40	19.51%
Educational, recreational and counseling services	55	28.95%	25	12.20%
Engineering and applied science tech. and trades	55	28.95%	65	31.71%
Engineering and applied sciences	15	7.89%	10	4.88%
Fine and applied arts	0	0.00%	20	9.76%
Health professionals, science and technologies	25	13.16%	15	7.32%
Humanities and related fields	0	0.00%	0	0.00%
Mathematics and physical sciences	0	0.00%	0	0.00%
Social sciences and related fields	0	0.00%	0	0.00%
Other and/or no specialization	0	0.00%	0	0.00%
Total people with post secondary qualifications	190	100.00%	205	100.00%
Females with post-secondary qualifications	105	55.26%	110	53.66%
Males with post-secondary qualifications	85	44.74%	95	46.34%

Source: Statistics Canada 1996 & 2001 Census (numbers may not add up due to rounding)

## Labour Force

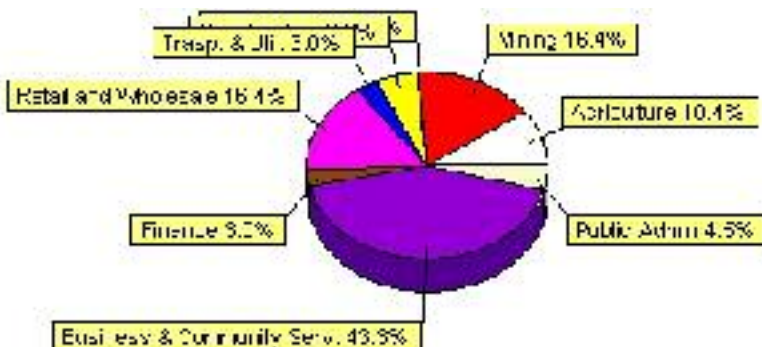
Labour force by activity	1996	2001
In the labour force, both sexes	455	340
Not in the labour force, both sexes	155	230
Total population 15 and over	610	565
Employed, both sexes	405	320
Unemployed, both sexes	50	15
Participation rate, both sexes	75.00%	60.00%
Unemployment rate, both sexes	11.00%	4.00%

Source: Statistics Canada 1996 & 2001 Census (numbers may not add up due to rounding)

Labour Force by Industry Division	1996	% of total	2001	% of total
Agriculture	25	5.56%	35	10.45%
Mining	120	26.67%	55	16.42%
Manufacturing	0	0.00%	0	0.00%
Construction	50	11.11%	20	5.97%
Transportation. & Utilities	50	11.11%	10	2.99%
Retail and Wholesale	25	5.56%	55	16.42%
Finance	0	0.00%	10	2.99%
Business & Community Services	110	24.44%	145	43.28%
Public Administration	15	3.33%	15	4.48%
Total All Industries	450	100.00%	335	100.00%

Source: Statistics Canada 1996 & 2001 Census (numbers may not add up due to rounding)

### Hardisty Labour Force By Industry - 2001



Labour Force by Major Occupational Groups	1996	%	2001	%
Management occupations	25	5.56%	70	20.59%
Business, Finances and administrative occupations	45	10.00%	15	4.41%
Natural and applied sciences and related occupations	55	12.22%	15	4.41%
Health occupations	15	3.33%	10	2.94%
Occupations in social science; education; government and religion	30	6.67%	10	2.94%
Occupations in art; culture; recreation and sport	0	0.00%	0	0.00%

Sales and service occupations	95	21.11%	100	29.41%
Trades; transport; equipment operators and related occupations	70	15.56%	55	16.18%
Occupations unique to primary industry	55	12.22%	70	20.59%
Occupations unique to processing; manufacturing and utilities	55	12.22%	10	2.94%
Occupations not elsewhere classified	0	0.00%	0	0.00%
Total - All Occupations (major groups)	450	100.00%	340	100.00%
Females - All Occupations	190	42.22%	145	42.65%
Males - All Occupations	260	57.78%	195	57.35%

Source: Statistics Canada 1996 & 2001 Census (numbers may not add up due to rounding)

---

## Income

<b>Family Income (Number of Families)</b>	<b>1996</b>	<b>%</b>	<b>2001</b>	<b>%</b>
less than \$19,999	10	6.06%	20	12.50%
\$20,000 - \$39,999	40	24.24%	40	25.00%
\$40,000 - \$59,999	65	39.39%	30	18.75%
\$60,000 and over	50	30.30%	75	46.88%
Total number of families	165	100.00%	165	103.13%
Average family income	\$51,657		\$63,402	
Median family income	\$49,576		\$62,914	

Source: Statistics Canada 1996 & 2001 Census (numbers may not add up due to rounding)

<b>Household Income (Number of Households)</b>	<b>1996</b>	<b>%</b>	<b>2001</b>	<b>%</b>
less than \$19,999	80	24.62%	75	24.59%
\$20,000 - \$39,999	70	21.54%	65	21.31%
\$40,000 - \$59,999	95	29.23%	50	16.39%
\$60,000 and over	30	9.23%	115	37.70%
Total number of households	325	100.00%	305	100.00%
Average household income	\$45,322		\$51,981	
Median household income	\$44,506		\$43,956	

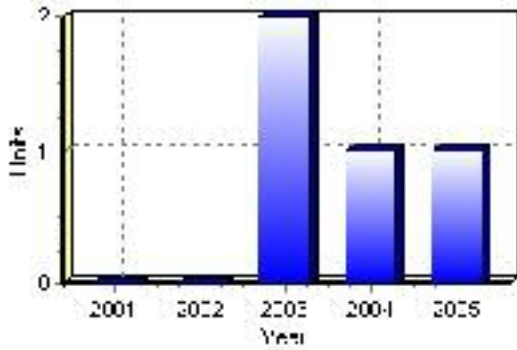
Source: Statistics Canada 1996 & 2001 Census (numbers may not add up due to rounding)

# Building Permits

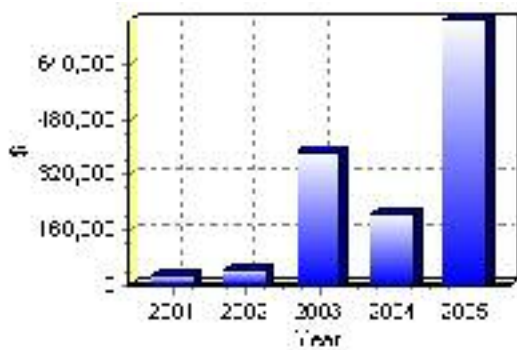
Total Building Permit Values	2001	2002	2003	2004	2005
Building Permits Value, Commercial	\$11,000	\$16,000	\$45,000	\$15,000	\$500,000
Building Permits Value, Industrial	\$0	\$0	\$0	\$0	\$0
Building Permits Value, Institutional	\$0	\$0	\$0	\$0	\$0
Building Permits Value, Residential	\$19,000	\$31,000	\$340,000	\$193,000	\$265,000
Building Permits Value, Total	\$30,000	\$47,000	\$385,000	\$208,000	\$765,000
Total Housing Starts	0	0	2	1	1

Source: Statistics Canada 2000-2004 Building Permits (numbers may not add up due to rounding)

## Total Housing Starts



## Value of Building Permits



## Dwellings

<b>Occupied Private Dwellings by Type</b>	<b>1996</b>	<b>% of total</b>	<b>2001</b>	<b>% of total</b>
Apartments	25	7.69%	30	9.84%
Detached Duplexes	0	0.00%	0	0.00%
Movable Dwellings	35	10.77%	20	6.56%
Other single attached house	10	3.08%	0	0.00%
Row and semi-detached house	0	0.00%	0	0.00%
Single-detached house	260	80.00%	250	81.97%
Total number of occupied private dwellings	325	100.00%	305	100.00%
Private dwellings, owned	255	78.46%	235	77.05%
Private Dwellings, rented	75	23.08%	70	22.95%

Source: Statistics Canada 1996 & 2001 Census (numbers may not add up due to rounding)

<b>Private Dwellings by Period of Construction</b>	<b># of Dwellings</b>	<b>% of total</b>
Period of construction, before 1946	65	21.67%
Period of construction, 1946 - 1960	15	5.00%
Period of construction, 1961 - 1970	45	15.00%
Period of construction, 1971 - 1980	90	30.00%
Period of construction, 1981 - 1990	40	13.33%
Period of construction, 1991 - 2001	45	15.00%
Total number of private dwellings constructed	300	100.00%

Source: Statistics Canada 2001 Census (numbers may not add up due to rounding)

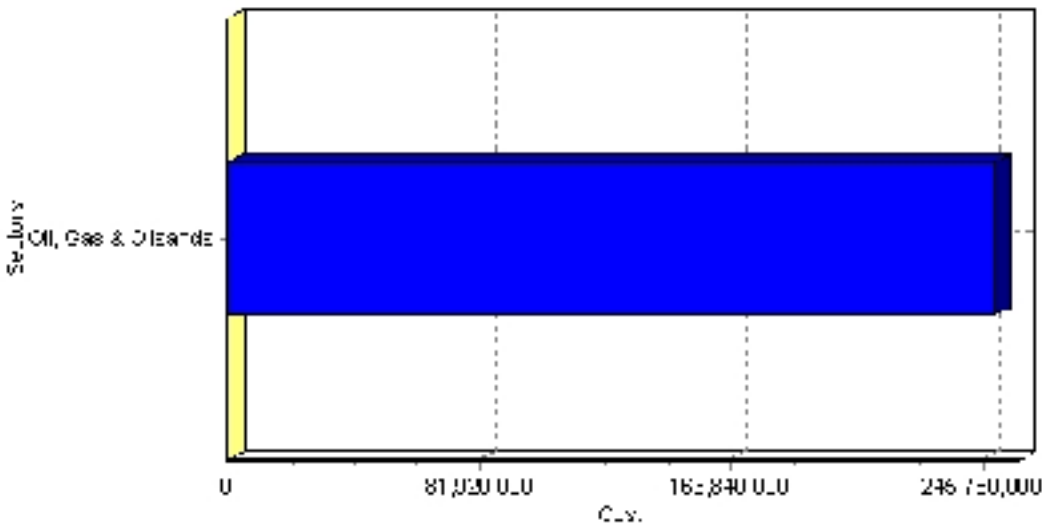
# Projects

## Summary of Projects in Hardisty as of September 2006

Project Sector	Number of Projects	Project Cost
Oil, Gas & Oilsands	1	\$250,000,000
Total	1	\$250,000,000

This inventory lists projects in Alberta that have recently been completed, are under construction, or are proposed to start construction. Not all projects are listed due to reasons of confidentiality and/or due to information not being available at the time of printing. Project data is obtained from public information sources, where possible, this data has been verified with the project proponent/developer, users of the Inventory may wish to confirm project data with the proponent/developer. The inventory does not breakdown project expenditures by any given year. The cost of a project is the value of expenditures expected over all phases of project construction, which may span over two or more years. Cost of projects listed in the Inventory are estimated values only. Source: Alberta Economic Development, 2004.

## Value of Projects by Sector (as of September 2006)



Project Status	Number of Projects	Project Cost
Under Construction	1	\$250,000,000
Total	1	\$250,000,000

This inventory lists projects in Alberta that have recently been completed, are under construction, or are proposed to start construction. Not all projects are listed due to reasons of confidentiality and/or due to information not being available at the time of printing. Project data is obtained from public information sources, where possible, this data has been verified with the project proponent/developer, users of the Inventory may wish to confirm project data with the proponent/developer. The inventory does not breakdown project expenditures by any given year. The cost of a project is the value of expenditures expected over all phases of project construction, which may span over two or more years. Cost of projects listed in the Inventory are estimated values only. Source: Alberta Economic Development, 2004.



# Largest Projects in Hardisty as of September 2006

Company Name	Project Description	Project Location	Project Cost	Construction Schedule	Status
Enbridge Inc.	Crude Oil Terminal (16 Tanks)	Hardisty	\$250,000,000	2006-2008	Under Construction

Disclaimer: Information in this profile has been provided from a variety of external sources. Although every effort has been made to ensure the accuracy, currency and reliability of the content and data, AlbertaFirst.com Ltd. accepts no responsibility in this regard.

© AlbertaFirst.com Ltd., 2006.