

Milo

www.telusplanet.net/public/vilmilo/

Welcome

WELCOME!

Milo is a clean, safe, close-knit farming community of approximately 115 people.

Milo is a progressive community in the midst of realizing its potential. Filled with people who embrace rural traditions and appreciate the heritage of the land, Milo is an exceptional place to call home.

The Village of Milo has something for everyone and hopes to welcome you really soon!

Area Overview

Milo had its beginning in 1909 when Pete Soli built a store and living quarters about 2 miles northeast of its present location. One business after another was constructed, however, a new era began when the railroad was extended in 1924. Milo had to be moved, and buildings were pulled to the new location just as they stood. Milo achieved Village status in 1931, and was proud to celebrate their 75th Anniversary in August, 2006.

Community Services

MILO MUNICIPAL LIBRARY - part of the [Chinook Arch Library System](#)

SNAKE VALLEY DROP IN CENTER (Senior Centre)

HOPE LUTHERAN CHURCH - welcomes all denominations

MILO COMMUNITY HALL

[VULCAN ADULT LEARNING](#)

[VULCAN FAMILY AND COMMUNITY SUPPORT SERVICES](#)

Community Lifestyle

RECREATION

Walking/bike Path - A 2.5 km path which winds through town and down to Lake MacGregor Dam.

Milo Curling Club - Bonspiels throughout the winter.

Natural Ice Arena

Baseball Diamonds

Lions Park - playground and picnic area as well as a sand volleyball court

Golfing - a short 15 minute drive north brings you to the Hidden Valley Resort in the Siksika Nation. The 9 hole golf course accepts public reservations.

EVENTS

Fishing Derby - Held annually at Lake MacGregor, a 35 km long lake with a campground and boat launch

ATTRACTIONS

Crowfoot Ferry - located 40 km Northeast of Milo, it is one of only 6 ferries left in Alberta.

Historic Sites such as Coffin Handle Butte, Majorville Cairn and many remnants of Tipi Rings

CAMPING

Lake MacGregor Campground

Village of Milo Campground - fully serviced



Milo Walking Path

Economic Base

Two main industries make up the economy of Milo - agriculture and a growing oil and gas industry.



Milo Seed Cleaning Plant

Economic Facts

AGRICULTURE

Agricore United Agro Center
Milo Seed Cleaning
Phillips Agricultural Products and Services
Seacue Spraying
Silbernagel Fencing

TRANSPORTATION

Marlin Oilfield Services Ltd (oilfield)
Milo Freight Systems (goods)
Monner Trucking (grain)
Rll Energy (oilfield)
Teigen Transport (grain)
Zodiac Trucking (grain)

FOOD

Milo Cafe
Milo Green Foods
Milo Hotel
Prairie Perfection Catering

SERVICES

Alvin's Auto Glass
Archambault Mechanical (automotive)
Arrowwood Cooperative Association Ltd.
B & S Creative Design (sign manufacturing)
Creative Finishing Touches (custom kitchens)
GD's Repair (automotive)

KT's Kool Kat Music (mobile music)
Mr. Plow Snow Removal
Scuba Steve's Oilfield Contracting
Trends by TC (beauty salon)
United Auto Refinishing
Valuventure Travel

Education

Milo Community School - located in the [Palliser School Division](#), the school provides a grade 1-9 program.

Kindergarten - privately run and located in the Community School.

[Adult Education](#) - Several classes offered annually.

Emergency Services

Milo and District Fire Association - a 30 member volunteer brigade as well as a 7 person emergency first response team.

Vulcan RCMP

Emergency 911



Rescue Equipment

Health Care

Vulcan Health Center is an 8 bed active facility with 15 long term beds, D level radiology area, fully equipped modern lab and a modern emergency area. An occupational therapist, mental health worker, social worker and palliative care is also available at the facility.

Other health services include a Public Health Unit, Dentist, Chiropractor, Optometrist, Podiatrist, and Hearing Aid Service.

Key Contacts for Business Development

PROVINCIAL

Honourable Barry McFarland
Member of the Legislative Assembly (MLA)
Little Bow Constituency
#410 Legislature Building
10800 - 97 Avenue
Edmonton AB
T5K 2B6
Tel: 780-427-0879
Fax: 780-422-0351

Constituency Office:
P.O. Box 231
111 Carman Street
Carmangay AB
T0L 0N0
Tel: 403-643-2077
Toll Free: 1-800-563-0917
Fax: 403-643-2024

FEDERAL

Ted Menzies
Member of Parliament (MP)
Macleod Constituency
House of Commons
Ottawa, Ontario
K1A 0A6
Tel: 613-995-8471
Fax: 613-996-9770

Constituency Office:
4925 1st Street West
P.O. Box 40
Claresholm AB
T0L 0T0
Tel: 403-625-5532
Toll Free: 1-866-636-9437
Fax: 403-625-5592

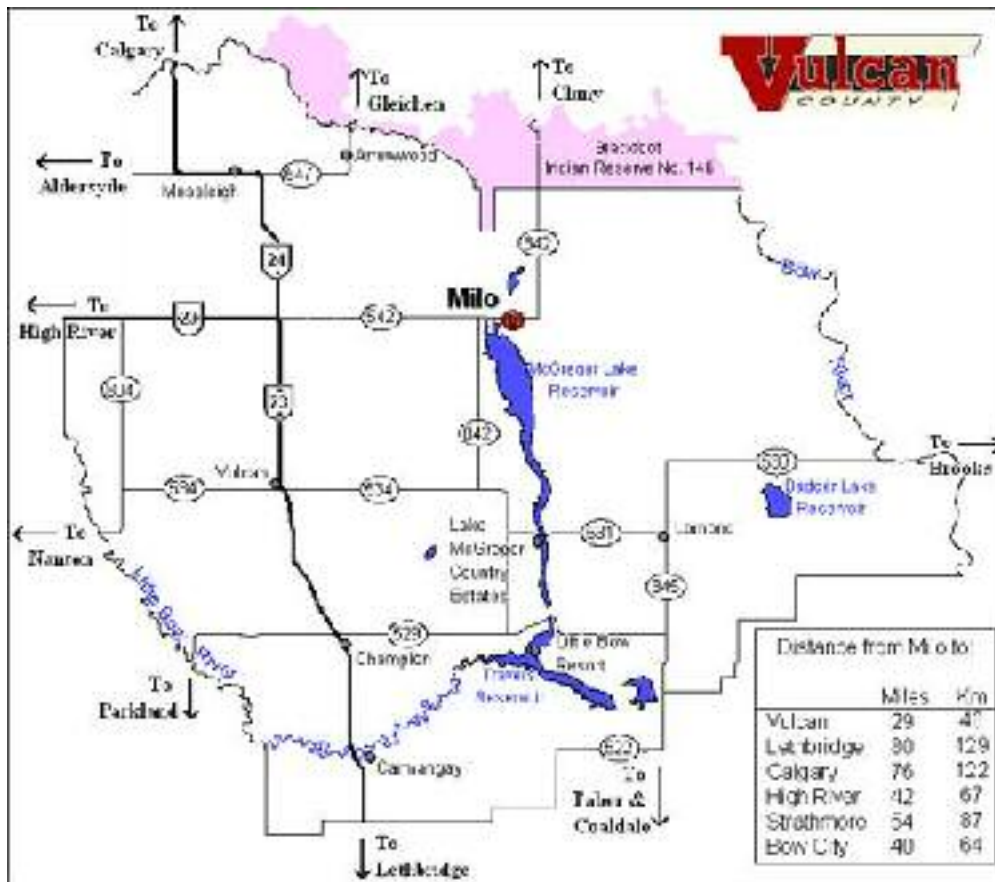
LOCAL

Village of Milo
Box 65, Milo Alberta
TOL 1L0
Tel : 403-599-3883
Fax: 403-599-3883
[Email](#)

Vulcan Business Development Society
Leslie Warren - Economic Development Officer
Box 360
Vulcan Ab TOL 2B0
Tel : 403-485-4100
Fax: 403-485-4130
[Email](#)

Location

Milo is located 2 km from the northernmost tip of Lake McGregor and easily accessed from Highway 542 from the West and Highway 1 via Highway 842 from the North.



County Map and Distances

Post Secondary Education

The University of Calgary, Mount Royal College and Southern Alberta Institute of Technology are 122 km (76 miles) from Milo.

The University of Lethbridge and Lethbridge Community College are 129 km (80 miles) from Milo.

Taxation

Tax Mill Rate

Residential 17.804

Commercial 21.994

Transportation

Milo is central to major locations and has 6 transport companies for goods, grain and the oilfield.

The closest international airport is the Calgary International Airport.

Utilities

Sunshine Gas Coop Ltd. 403-684-3672

Wild Rose Internet - High Speed Internet 1-888-633-3974

Epcor 310-2255

Telus 403-231-7111

Vulcan District Waste Commission

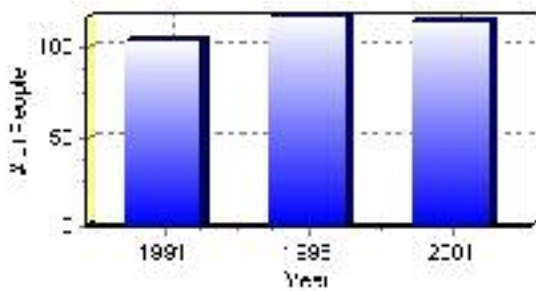
Population

Total Population

Population 2004*	115
Population 2003*	115
Population 2002*	115
Population 2001**	115
Population 2000*	117
Population 1996**	117
Population 1991**	104
Population % change 1991-1996	11.11%
Population % change 1996-2001	-1.74%

* Source: Official Population List, Alberta Municipal Affairs
** Source: Statistics Canada 1991, 1996, & 2001 Census

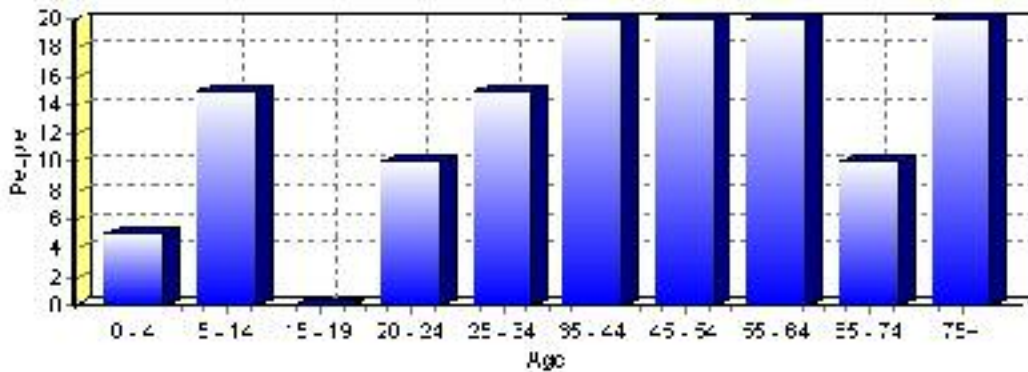
Total Population 1991-2001



Population by Age and Gender	1996 Male	1996 Female	1996 Total	2001 Male	2001 Female	2001 Total
Age 0 - 4	0	0	0	5	0	5
Age 5 - 14	10	10	20	5	10	15
Age 15 - 19	5	0	5	0	0	0
Age 20 - 24	0	5	5	5	5	10
Age 25 - 34	10	5	15	10	5	15
Age 35 - 44	10	15	25	10	10	20
Age 45 - 54	5	10	15	10	10	20
Age 55 - 64	0	0	0	10	10	20
Age 65 - 74	0	5	5	5	5	10
Age 75 and older	5	10	15	10	10	20
Total All Persons	60	60	120	55	60	115

Source: Statistics Canada 1996 & 2001 Census (numbers may not add up due to rounding)

Milo Population by Age Group (2001)

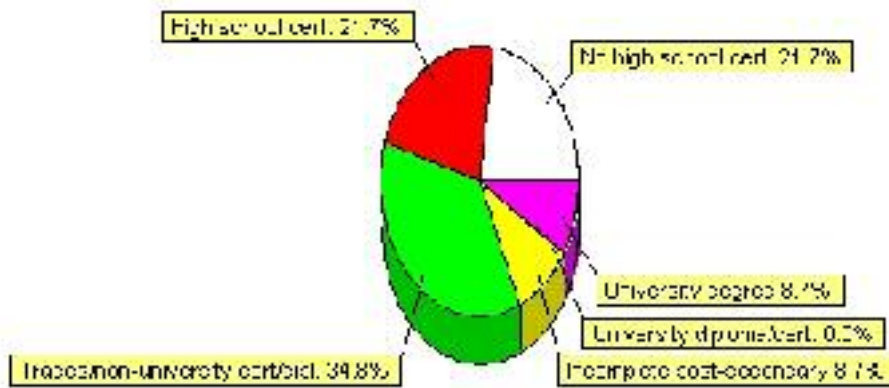


Education Statistics

Highest level of schooling for Population 20yrs and older	2001	%
People without high school certificates	25	21.74%
People with high school certificates	25	21.74%
People with trades or non-university certificate or diploma	40	34.78%
People with post-secondary education (not completed)	10	8.70%
People with university diploma/certificate	0	0.00%
People with university degree	10	8.70%
Total Population 20 years and older	115	100.00%

Source: Statistics Canada 2001 Census (numbers may not add up due to rounding)

Milo Highest Level of Schooling 2001



Population with Post Secondary Qualifications	1996	%	2001	%
Agriculture and biological sciences	0	0.00%	0	0.00%
Commerce, management and business administration	0	0.00%	0	0.00%
Educational, recreational and counseling services	10	50.00%	20	36.36%
Engineering and applied science tech. and trades	10	50.00%	15	27.27%
Engineering and applied sciences	0	0.00%	0	0.00%
Fine and applied arts	0	0.00%	0	0.00%
Health professionals, science and technologies	0	0.00%	10	18.18%
Humanities and related fields	0	0.00%	0	0.00%
Mathematics and physical sciences	0	0.00%	0	0.00%
Social sciences and related fields	10	50.00%	10	18.18%
Other and/or no specialization	0	0.00%	0	0.00%
Total people with post secondary qualifications	20	100.00%	55	100.00%
Females with post-secondary qualifications	10	50.00%	30	54.55%
Males with post-secondary qualifications	10	50.00%	25	45.45%

Source: Statistics Canada 1996 & 2001 Census (numbers may not add up due to rounding)

Labour Force

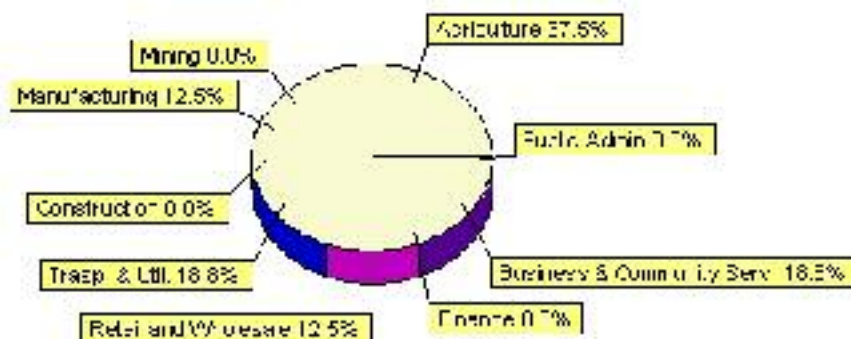
Labour force by activity	1996	2001
In the labour force, both sexes	50	80
Not in the labour force, both sexes	35	30
Total population 15 and over	90	110
Employed, both sexes	45	80
Unemployed, both sexes	10	0
Participation rate, both sexes	55.00%	73.00%
Unemployment rate, both sexes	20.00%	0.00%

Source: Statistics Canada 1996 & 2001 Census (numbers may not add up due to rounding)

Labour Force by Industry Division	1996	% of total	2001	% of total
Agriculture	0	0.00%	30	37.50%
Mining	0	0.00%	0	0.00%
Manufacturing	0	0.00%	10	12.50%
Construction	0	0.00%	0	0.00%
Transportation. & Utilities	10	20.00%	15	18.75%
Retail and Wholesale	25	50.00%	10	12.50%
Finance	0	0.00%	0	0.00%
Business & Community Services	0	0.00%	15	18.75%
Public Administration	0	0.00%	0	0.00%
Total All Industries	50	100.00%	80	100.00%

Source: Statistics Canada 1996 & 2001 Census (numbers may not add up due to rounding)

Milo Labour Force By Industry - 2001



Labour Force by Major Occupational Groups	1996	%	2001	%
Management occupations	10	18.18%	0	0.00%
Business, Finances and administrative occupations	0	0.00%	0	0.00%
Natural and applied sciences and related occupations	0	0.00%	0	0.00%
Health occupations	0	0.00%	0	0.00%
Occupations in social science; education; government and religion	0	0.00%	15	18.75%
Occupations in art; culture; recreation and sport	0	0.00%	10	12.50%

Sales and service occupations	10	18.18%	15	18.75%
Trades; transport; equipment operators and related occupations	20	36.36%	10	12.50%
Occupations unique to primary industry	0	0.00%	25	31.25%
Occupations unique to processing; manufacturing and utilities	10	18.18%	0	0.00%
Occupations not elsewhere classified	0	0.00%	0	0.00%
Total - All Occupations (major groups)	55	100.00%	80	100.00%
Females - All Occupations	30	54.55%	40	50.00%
Males - All Occupations	25	45.45%	45	56.25%

Source: Statistics Canada 1996 & 2001 Census (numbers may not add up due to rounding)

Dwellings

Occupied Private Dwellings by Type	1996	% of total	2001	% of total
Apartments	0	0.00%	0	0.00%
Detached Duplexes	0	0.00%	0	0.00%
Movable Dwellings	0	0.00%	5	9.09%
Other single attached house	0	0.00%	0	0.00%
Row and semi-detached house	0	0.00%	0	0.00%
Single-detached house	45	100.00%	45	81.82%
Total number of occupied private dwellings	45	100.00%	55	100.00%
Private dwellings, owned	40	88.89%	55	100.00%
Private Dwellings, rented	10	22.22%	0	0.00%

Source: Statistics Canada 1996 & 2001 Census (numbers may not add up due to rounding)

Private Dwellings by Period of Construction	# of Dwellings	% of total
Period of construction, before 1946	25	45.45%
Period of construction, 1946 - 1960	0	0.00%
Period of construction, 1961 - 1970	10	18.18%
Period of construction, 1971 - 1980	10	18.18%
Period of construction, 1981 - 1990	0	0.00%
Period of construction, 1991 - 2001	10	18.18%
Total number of private dwellings constructed	55	100.00%

Source: Statistics Canada 2001 Census (numbers may not add up due to rounding)

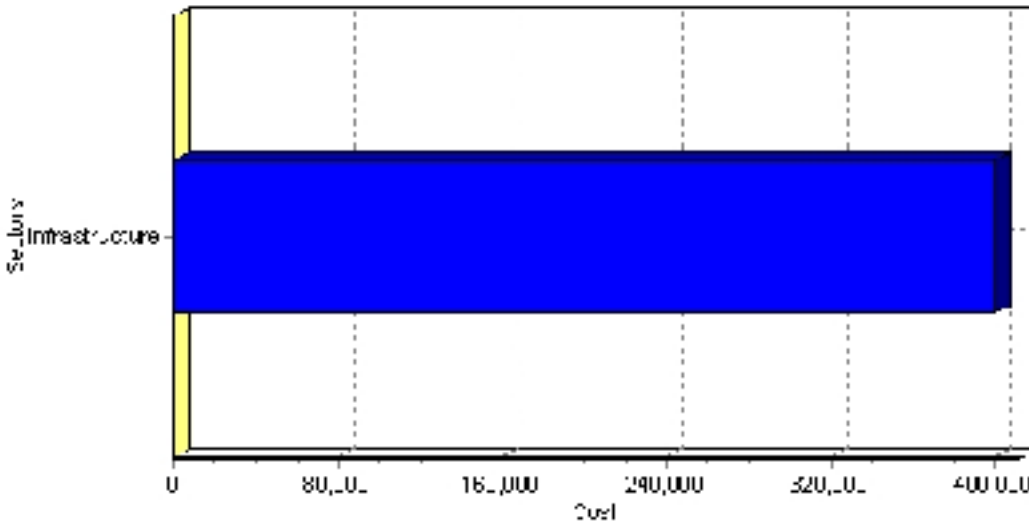
Projects

Summary of Projects in Milo as of September 2006

Project Sector	Number of Projects	Project Cost
Infrastructure	3	\$400,000
Total	3	\$400,000

This inventory lists projects in Alberta that have recently been completed, are under construction, or are proposed to start construction. Not all projects are listed due to reasons of confidentiality and/or due to information not being available at the time of printing. Project data is obtained from public information sources, where possible, this data has been verified with the project proponent/developer, users of the Inventory may wish to confirm project data with the proponent/developer. The inventory does not breakdown project expenditures by any given year. The cost of a project is the value of expenditures expected over all phases of project construction, which may span over two or more years. Cost of projects listed in the Inventory are estimated values only. Source: Alberta Economic Development, 2004.

Value of Projects by Sector (as of September 2006)



Project Status	Number of Projects	Project Cost
Completed	2	\$200,000
Under Construction	1	\$200,000
Total	3	\$400,000

This inventory lists projects in Alberta that have recently been completed, are under construction, or are proposed to start construction. Not all projects are listed due to reasons of confidentiality and/or due to information not being available at the time of printing. Project data is obtained from public information sources, where possible, this data has been verified with the project proponent/developer, users of the Inventory may wish to confirm project data with the proponent/developer. The inventory does not breakdown project expenditures by any given year. The cost of a project is the value of expenditures expected over all phases of project construction, which may span over two or more years. Cost of projects listed in the Inventory are estimated values only. Source: Alberta Economic Development, 2004.

Largest Projects in Milo as of September 2006

Company Name	Project Description	Project Location	Project Cost	Construction Schedule	Status
Village of Milo	WATER TREATMENT PLANT UPGRADE	Milo	\$200,000	2006-2006	Under Construction
Shawnee Excavating	Village Road Construction	Milo	\$100,000	2006-2006	Completed
Shawnee Excavating	Underground Servicing (Six Lots)	Milo	\$100,000	2006-2006	Completed

Disclaimer: Information in this profile has been provided from a variety of external sources. Although every effort has been made to ensure the accuracy, currency and reliability of the content and data, AlbertaFirst.com Ltd. accepts no responsibility in this regard.

© AlbertaFirst.com Ltd., 2006.