

Provost

www.provost.ca

Welcome

Welcome to the Town of **Provost**. Whether your visit is business related or personal, Provost has the services to meet your needs. Provost offers small town charm, old-fashioned hospitality, plenty of friendly faces and the amenities of larger centers. The Town provides a thriving business core to meet the needs of local residents and visitors to the area. Recreational activities are plentiful in the community. Provost has two school systems that provide education from Kindergarten to Grade 12, and adult education courses are available. Provost has a general hospital, nursing home, medical and dental clinics and two seniors' residences. Read on to discover what else Provost has to offer!



Area Overview

Provost was incorporated as a Village on January 24th, 1910 with N.A. Kilburn as Reeve, John Campbell and G. McNeil were the first councillors. The Village became a Town on December 29th, 1952.

Today, Provost is a thriving community that serves a large surrounding rural district. It has all the facilities and amenities to serve the community's needs, including government services and support services for the thriving oil, gas and agricultural sectors.

Community Services

Municipal

[Town of Provost](#)

P.O. Box 449

Provost, Alberta T0B 3S0

Tel: 780-753-2261

Fax: 780-753-6889

Email: tprovost@telusplanet.net

[Town of Provost Municipal Library](#)

5035 - 51 Avenue

Box 120

Provost, Alberta T0B 3S0

Tel: 780-753-2801

Fax: 780-753-2801

Email: provostlibrary@libs.prl.ab.ca

Recreation

Email: dircom@telusplanet.net

Public Works

Email: pubwrks@telusplanet.net

Economic Development Committee

Email: dev_edc@telus.net

Provincial

- AAFRD (Alberta Agriculture, Food & Rural Development)
- Energy & Natural Resources
- Fish & Wildlife Division
- Hail & Crop Insurance Corporation

Federal

- [Canada Post Office](#)
- [Royal Canadian Mounted Police](#)

Community Lifestyle

Recreation

Recreation facilities include the Agriplex-curling rink [4 sheets of ice], arena, bowling alley [4 lanes, 5 pin], campgrounds [45 full-service and 8 power-only sites], golf course [9 holes, grass greens], ice rink [outdoor], parks [6], recreation and culture centre, skateboard park, sports grounds [4 baseball diamonds and 1 batting cage], swimming pool [outdoor], tennis courts [2] and a trout pond.

Community Organizations

Provost has numerous volunteer organizations and clubs including the Arts and Crafts Club, Cubs and Scouts, Curling Club, Figure Skating Club, Fish and Game Association, Girl Guides, Golf Club, Kinsmen, Library Board, Lions, Masonic Lodge, Minor Baseball, Minor Hockey, Soccer Club, Swim Club and Tae Kwon Do.

Religious Services

- Associated Gospel Church
- Central Lutheran Church
- Community Church (Alliance)
- St. Mary's Roman Catholic Church
- United Church of Canada

Special Annual Events

- Farming for Profit - February
- Fish & Game Association Supper - February
- Music Festival - March
- Church Suppers - Spring and Fall
- Provost Farmers Markets - Fridays mid-May to October with Special Easter and
- Christmas Sales
- Rosenheim Church Annual Picnic - 1st Sunday in June
- Canada Day Parade & Kinsmen Crash & Splash (Demolition Derby & Mud Races)
- Ducks Unlimited Supper - October

- Lion's Polkafest - October
- Remembrance Day - November 11th
- Kinsmen Community Christmas Party - December
- Golf, Ball Tournaments, Curling Bonspiels - In Season

Accommodations

- Deerhead Inn Motel
- Greenhead Motel
- Horizon Motel
- Provost Motor Inn Hotel
- Super 8 Motel

Restaurants

- A & W
- Greenhead Motel and Restaurant
- Horizon Motel and Restaurant
- Provost Motor Inn Restaurant
- Silver Sticks Restaurant
- Subway
- The Bean Counter Cafe
- The Gallery
- Top 20 Restaurant and Lounge

Economic Base

The economic base of Provost is primarily oil and gas, followed by agriculture.

The agricultural community, consisting of ranching and grain farming, is in one of the best producing parts of Alberta, with up to 3,000 head of cattle sold on market day during the busy season. Spring seeding leads to many bumper crops where time-honoured traditions, such as helping the neighbour get his crop off in the fall, are still respected. Farmers operate with top quality machinery and keep up with new farming techniques using current technology in both their fields and offices. Located just east of town is a state of the art concrete grain terminal opened in 1999 by Agricore United.

Economic Facts

The local oil patch employs hundreds of people and includes numerous companies.

Major Oil & Gas Companies

- Anadarko Canada Corporation
- Apache Canada
- Champion Technologies
- Enbridge Pipelines
- Encana Oil & Gas
- Enerplus Global

- Enterra Energy
- Gibson Petroleum
- Harvest Operations
- Husky Oil Operations
- Leachman Enterprises Ltd.
- Maverick Oilfield Services
- Ray-Patch Pipeline
- Real Resources
- Rife Resources Ltd.
- Winterhawk Enterprises (Provost) Ltd.

Other Major Employers

- Buffalo Trail Regional School Division #28
- East Central Alberta Catholic Separate Schools Regional Div.#16
- East Central Health District 5
- Municipal District of Provost No. 52

Financial Institutions

- ATB Financial
- Canadian Imperial Bank of Commerce
- Common Wealth Credit Union
- ManuLife Financial

Communications

Newspapers - Edmonton Journal (daily), Edmonton Sun (daily), The Meredian Booster (3 issues a week), [The Provost News](#) (local weekly paper)

Radio - Calgary, Edmonton, Lloydminster, Red Deer, Saskatoon and Wainwright. Television - Edmonton, Lloydminster, Red Deer or Persona Communications Inc.

Education

Provost is part of the [Buffalo Trail Regional School Division #28](#), headquartered in Wainwright [Tel: 780-842-6144]

The [East Central Alberta Catholic Separate School Regional Division #16](#), headquartered in Wainwright [Tel: 780-842-3992]

[Provost Family Day Home Program](#) - brings together parents and child care providers.

[Playschool](#) - Ages 3-4 at Provost Public School

[Preschool/Junior Kindergarten](#) - Ages 4-5 at Provost Public School and St. Thomas Aquinas School

[Public](#) - Provost Public School provides public school education for Grades K to 12.

[Separate](#) - St. Thomas Aquinas School provides separate school education for Grades K to 12.

[Provost Outreach School](#) - provides education for Grades 7 to 12, to assist students who cannot learn in a traditional school setting.

Emergency Services

ALL EMERGENCIES CALL - 9-1-1

[Fire Protection](#) - 9-1-1

[Provost Volunteer Fire Department](#) - [Non-Emergency Tel: 780-753-2529]

[Police Services](#) - 9-1-1

Provost is served by a local detachment of the [Royal Canadian Mounted Police](#) [RCMP] [Tel: 780-753-2215 or 780-753-2214]

[Special Constable](#) [Enforcement Issues Tel: 780-209-4289]

[Ambulance Services](#) - 9-1-1

[Information Tel: 780-753-2291]

Health Care

Provost has a general hospital, nursing home, 2 seniors' residences [Hillcrest Lodge and Crestwood Place], medical clinic, chiropractor, 2 dental clinics, massage therapists and the part-time services of a denturist. Residents of Provost can access AADAC and family counselling services.

Key Contacts for Business Development

Municipal

[Town of Provost](#)

P.O. Box 449

Provost, Alberta

T0B 3S0

Tel: 780-753-2261

Fax: 780-753-6889

Ken Knox

Mayor

Terry Hurlbut

Administrator

Email: munadmin@telusplanet.net

Leila Grobel

Economic Development Officer

Email: dev_edc@telus.net

Provincial (Updated May 2006)

[Alberta Economic Development](#)

Allan Walkey, Regional Manager

Email: allan.walkey@gov.ab.ca

Dale Beddoes, Information Officer

Email: dale.beddoes@gov.ab.ca

5005 - 49 Avenue

Camrose, Alberta

T4V 1N5

Tel: 780-679-1235

Fax: 780-679-1250

[Doug Griffiths](#)

Member of the Legislative Assembly [MLA]

Wainwright Constituency

Constituency Office
#201, 1006 - 4 Avenue
Wainwright
T9W 2R3
Phone: (780) 842-6177
Fax: (780) 842-3171
battleriver.wainwright@assembly.ab.ca

Legislature Office
#130 Legislature Building
10800-97 Avenue
Edmonton
T5K 2B6
Phone: (780) 422-5369
Fax: (780) 422-5385

Federal (Updated May 2006)

Leon Benoit

Member of Parliament [MP] Vegreville - Wainwright Constituency

Parliamentary Address
House of Commons Ottawa,
Ontario
K1A 0A6
Telephone: (613) 992-4171
Fax: (613) 996-9011
E-Mail: Benoit.L@parl.gc.ca

Constituency Address
5004 - 49th Street, Professional Building, P.O. Box 300
Mannville, Alberta
T0B 2W0
Telephone: (780) 763-6130 1-800-463-1194
Fax: (780) 763-6132
TTY:
E-Mail: benoit1@parl.gc.ca

Location

Provost is **located** in the Municipal District of Provost No.52. It is 290 km southeast of Edmonton, 450 km northeast of Calgary, and 125 km south of Lloydminster. Provost is on Highway 13 just 20 km west of the Saskatchewan border.

Post Secondary Education

Provost and District Adult Learning offers adult education courses. The Community Access Program (CAP) allows adult students to pursue distance learning at minimal or no cost.

Taxation

Mill Rates [2005]

Education:

Public School/Separate School Support - Residential 5.0114

Public School/Separate School Support - Commercial 6.8017

Provost Foundation - Hillcrest Lodge .4442

Ambulance .4325

Municipal:

General Operating - Residential 8.7704

General Operating - Commercial 15.7704

TOTAL RESIDENTIAL 14.6585

TOTAL COMMERCIAL 234488

Mill Rates [2004]

Education:

Public School/Separate School Support - Residential 5.3275

Public School/Separate School Support - Commercial 7.8343

Provost Foundation - Hillcrest Lodge .5204

Ambulance .4861

Municipal:

General Operating - Residential 8.3129

General Operating - Commercial 15.3129

TOTAL RESIDENTIAL 24.6469

TOTAL COMMERCIAL 24.1537

Mill Rates [2003]

Education: Public School/Separate School Support - Residential 5.57

Public School/Separate School Support - Commercial 8.17

Provost Foundation - Hillcrest Lodge .8817

Ambulance .32238

Municipal: General Operating - Residential 8.31292

General Operating - Commercial 15.50392

TOTAL RESIDENTIAL 15.087

TOTAL COMMERCIAL 24.878

	<u>Residential/Farmland</u>	<u>Non-Residential</u>
2005		
Municipal Tax Rate	9.2029	16.2029
Education - Alberta School Foundation Fund Tax Rate	5.0114	6.8017
Seniors Lodge Accommodation Tax Rate	.4442	.4442

Transportation

Air Service

Provost has a local airport with a 1,524 metre (5,000 feet) runway; the longest runway between Edmonton and Saskatoon. The nearest commercial and air freight services are at Lloydminster [125 km north].

Rail Service

Provost is served by the Canadian Pacific Railway secondary main line. Spur trackage is available. Intermodal services are

available at Edmonton and Calgary.

Highways

Connecting highways are Highway 13, leading west to Camrose and Wainwright [via Highway 41] and east to the Saskatchewan border, and Secondary Highway 899, leading north to Ribstone and south to Bodo. Secondary Highway 600 runs west to Highway 41, south to Secondary Highway 599, leading to Castor.

Freight Carriers

Hi-Way 9 Express Hi-Way 13 Transport Kindersley Transport Provost Freight Lines

Couriers

Canpar Transport, DHL Express, Don Armour Courier, Greyhound, Purolator Couriers and Relay Distributors.

Bus Service

Provost is served by Greyhound Bus Lines.

Local Senior Citizens Transportation

The Provost Lion's Handi-Van is transportation for seniors and handicapped persons residing within the Town of Provost and rural Provost.

Utilities

Power

EPCOR (Account Activation) 310-4300

Fortis Alberta Inc. (Power Outages/Customer Service) 310-9473

Natural Gas

ATCO Gas Ltd.

5028 - 49 Street

Provost, Alberta T0B 3S0

Tel: 780-753-8011

General Inquiries 310-5678

Emergencies 1-800-511-3447

Direct Energy (Billing Inquiries) 1-866-420-3174

Telephone

Telus Communications Inc.

Residential Customers 310-2255

Business Customers 310-3100

Credit/Collections 310-2500

Repair Service 611

Internet for Residence 310-4638

Internet Technical Support 310-8324

Telus Mobility Tel: 1-866-558-2273

Cable

Persona Communications Inc. (Cable T.V.) Tel: 1-800-465-1000

Water Supply

The Town water source is wells. Reservoir capacity, measured in treated substance, is 4,773 cubic metres.

Waste Management

Sewage treatment is provided by a series of lagoons consisting of 4 short and 3 long detention ponds.

Residential garbage is collected weekly. Recyclables are collected every second week and during the summer months grass cuttings are collected for composting.

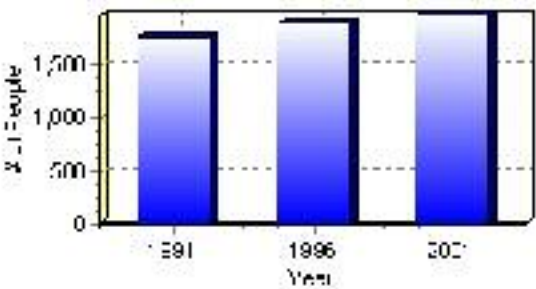
Population

Total Population

Population 2004*	1,980
Population 2003*	1,980
Population 2002*	1,980
Population 2001**	1,980
Population 2000*	2,045
Population 1996**	1,904
Population 1991**	1,776
Population % change 1991-1996	6.72%
Population % change 1996-2001	3.84%

* Source: Official Population List, Alberta Municipal Affairs
** Source: Statistics Canada 1991, 1996, & 2001 Census

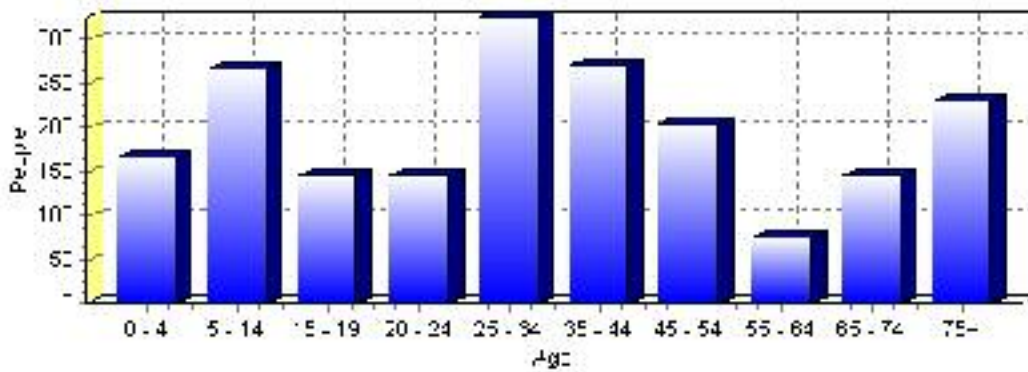
Total Population 1991-2001



Population by Age and Gender	1996 Male	1996 Female	1996 Total	2001 Male	2001 Female	2001 Total
Age 0 - 4	75	60	135	75	90	165
Age 5 - 14	120	135	255	130	135	265
Age 15 - 19	75	80	155	70	75	145
Age 20 - 24	85	70	155	75	70	145
Age 25 - 34	185	155	340	175	150	325
Age 35 - 44	140	130	270	145	125	270
Age 45 - 54	70	65	135	100	105	205
Age 55 - 64	55	60	115	35	40	75
Age 65 - 74	55	95	150	60	85	145
Age 75 and older	90	120	210	90	140	230
Total All Persons	950	955	1,905	950	1,030	1,980

Source: Statistics Canada 1996 & 2001 Census (numbers may not add up due to rounding)

Provost Population by Age Group (2001)

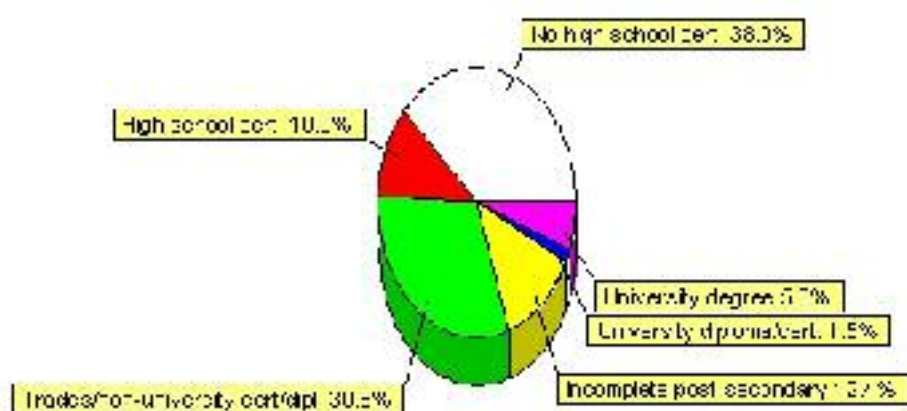


Education Statistics

Highest level of schooling for Population 20yrs and older	2001	%
People without high school certificates	505	37.97%
People with high school certificates	145	10.90%
People with trades or non-university certificate or diploma	410	30.83%
People with post-secondary education (not completed)	165	12.41%
People with university diploma/certificate	20	1.50%
People with university degree	75	5.64%
Total Population 20 years and older	1,330	100.00%

Source: Statistics Canada 2001 Census (numbers may not add up due to rounding)

Provost Highest Level of Schooling 2001



Population with Post Secondary Qualifications	1996	%	2001	%
Agriculture and biological sciences	35	7.37%	45	8.82%
Commerce, management and business administration	110	23.16%	120	23.53%
Educational, recreational and counseling services	60	12.63%	60	11.76%
Engineering and applied science tech. and trades	140	29.47%	160	31.37%
Engineering and applied sciences	0	0.00%	0	0.00%
Fine and applied arts	35	7.37%	25	4.90%
Health professionals, science and technologies	75	15.79%	55	10.78%
Humanities and related fields	0	0.00%	10	1.96%
Mathematics and physical sciences	0	0.00%	0	0.00%
Social sciences and related fields	10	2.11%	40	7.84%
Other and/or no specialization	0	0.00%	0	0.00%
Total people with post secondary qualifications	475	100.00%	510	100.00%
Females with post-secondary qualifications	250	52.63%	270	52.94%
Males with post-secondary qualifications	225	47.37%	240	47.06%

Source: Statistics Canada 1996 & 2001 Census (numbers may not add up due to rounding)

Labour Force

Labour force by activity	1996	2001
In the labour force, both sexes	1,025	1,030
Not in the labour force, both sexes	400	430
Total population 15 and over	1,425	1,465
Employed, both sexes	995	990
Unemployed, both sexes	30	40
Participation rate, both sexes	71.00%	70.00%
Unemployment rate, both sexes	2.00%	4.00%

Source: Statistics Canada 1996 & 2001 Census (numbers may not add up due to rounding)

Labour Force by Industry Division	1996	% of total	2001	% of total
Agriculture	65	6.34%	40	3.86%
Mining	185	18.05%	265	25.60%
Manufacturing	50	4.88%	35	3.38%
Construction	80	7.80%	65	6.28%
Transportation. & Utilities	90	8.78%	55	5.31%
Retail and Wholesale	205	20.00%	200	19.32%
Finance	25	2.44%	35	3.38%
Business & Community Services	260	25.37%	325	31.40%
Public Administration	15	1.46%	20	1.93%
Total All Industries	1,025	100.00%	1,035	100.00%

Source: Statistics Canada 1996 & 2001 Census (numbers may not add up due to rounding)

Provost Labour Force By Industry - 2001



Labour Force by Major Occupational Groups	1996	%	2001	%
Management occupations	135	13.17%	140	13.53%
Business, Finances and administrative occupations	150	14.63%	150	14.49%
Natural and applied sciences and related occupations	10	0.98%	25	2.42%
Health occupations	60	5.85%	40	3.86%
Occupations in social science; education; government and religion	30	2.93%	40	3.86%
Occupations in art; culture; recreation and sport	0	0.00%	10	0.97%

Sales and service occupations	200	19.51%	235	22.71%
Trades; transport; equipment operators and related occupations	180	17.56%	150	14.49%
Occupations unique to primary industry	130	12.68%	170	16.43%
Occupations unique to processing; manufacturing and utilities	130	12.68%	80	7.73%
Occupations not elsewhere classified	0	0.00%	0	0.00%
Total - All Occupations (major groups)	1,025	100.00%	1,035	100.00%
Females - All Occupations	420	40.98%	460	44.44%
Males - All Occupations	605	59.02%	575	55.56%

Source: Statistics Canada 1996 & 2001 Census (numbers may not add up due to rounding)

Income

Family Income (Number of Families)	1996	%	2001	%
less than \$19,999	35	7.78%	35	8.24%
\$20,000 - \$39,999	75	16.67%	130	30.59%
\$40,000 - \$59,999	160	35.56%	95	22.35%
\$60,000 and over	180	40.00%	195	45.88%
Total number of families	450	100.00%	455	107.06%
Average family income	\$59,234		\$65,273	
Median family income	\$56,936		\$60,884	

Source: Statistics Canada 1996 & 2001 Census (numbers may not add up due to rounding)

Household Income (Number of Households)	1996	%	2001	%
less than \$19,999	120	16.67%	100	13.42%
\$20,000 - \$39,999	175	24.31%	185	24.83%
\$40,000 - \$59,999	190	26.39%	140	18.79%
\$60,000 and over	60	8.33%	315	42.28%
Total number of households	720	100.00%	745	100.00%
Average household income	\$52,117		\$57,524	
Median household income	\$49,085		\$51,990	

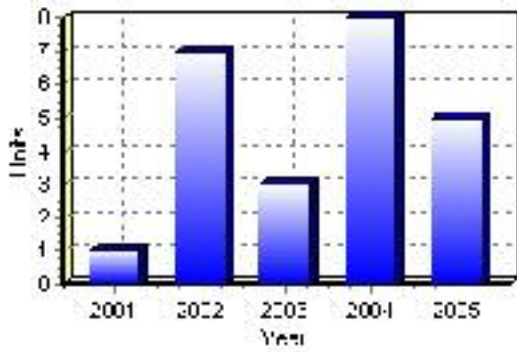
Source: Statistics Canada 1996 & 2001 Census (numbers may not add up due to rounding)

Building Permits

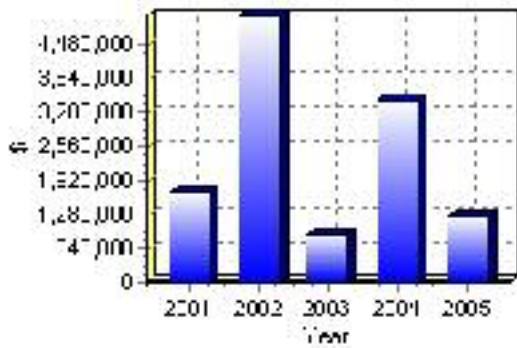
Total Building Permit Values	2001	2002	2003	2004	2005
Building Permits Value, Commercial	\$985,000	\$403,000	\$435,000	\$1,650,000	\$112,000
Building Permits Value, Industrial	\$114,000	\$6,000	\$0	\$400,000	\$0
Building Permits Value, Institutional	\$405,000	\$3,512,000	\$0	\$145,000	\$60,000
Building Permits Value, Residential	\$189,000	\$1,091,000	\$466,000	\$1,240,000	\$1,055,000
Building Permits Value, Total	\$1,693,000	\$5,012,000	\$901,000	\$3,435,000	\$1,227,000
Total Housing Starts	1	7	3	8	5

Source: Statistics Canada 2000-2004 Building Permits (numbers may not add up due to rounding)

Total Housing Starts



Value of Building Permits



Dwellings

Occupied Private Dwellings by Type	1996	% of total	2001	% of total
Apartments	20	2.78%	15	2.03%
Detached Duplexes	20	2.78%	0	0.00%
Movable Dwellings	40	5.56%	50	6.76%
Other single attached house	0	0.00%	0	0.00%
Row and semi-detached house	25	3.47%	20	2.70%
Single-detached house	615	85.42%	655	88.51%
Total number of occupied private dwellings	720	100.00%	740	100.00%
Private dwellings, owned	585	81.25%	620	83.78%
Private Dwellings, rented	135	18.75%	120	16.22%

Source: Statistics Canada 1996 & 2001 Census (numbers may not add up due to rounding)

Private Dwellings by Period of Construction	# of Dwellings	% of total
Period of construction, before 1946	135	18.37%
Period of construction, 1946 - 1960	75	10.20%
Period of construction, 1961 - 1970	170	23.13%
Period of construction, 1971 - 1980	150	20.41%
Period of construction, 1981 - 1990	95	12.93%
Period of construction, 1991 - 2001	110	14.97%
Total number of private dwellings constructed	735	100.00%

Source: Statistics Canada 2001 Census (numbers may not add up due to rounding)

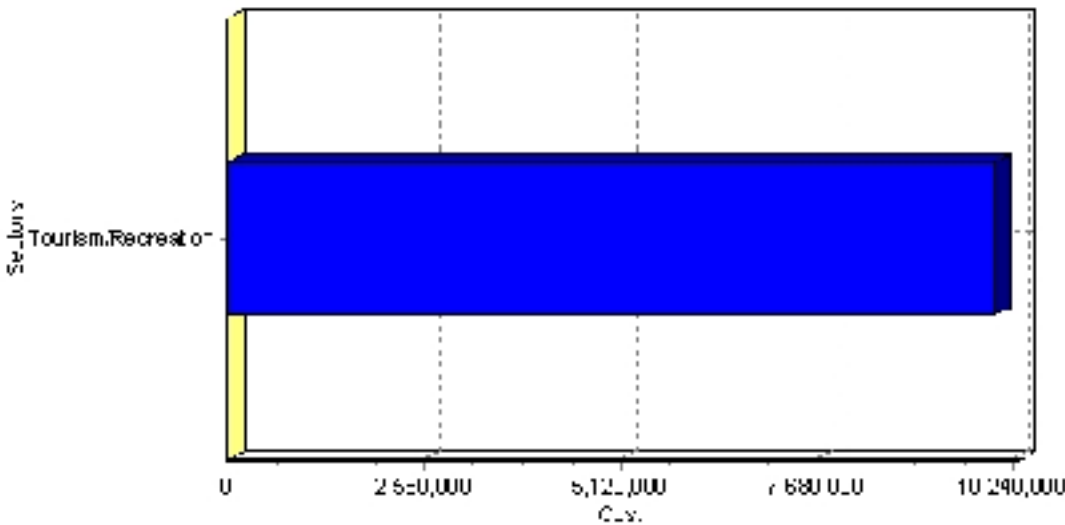
Projects

Summary of Projects in Provost as of September 2006

Project Sector	Number of Projects	Project Cost
Tourism/Recreation	1	\$10,000,000
Total	1	\$10,000,000

This inventory lists projects in Alberta that have recently been completed, are under construction, or are proposed to start construction. Not all projects are listed due to reasons of confidentiality and/or due to information not being available at the time of printing. Project data is obtained from public information sources, where possible, this data has been verified with the project proponent/developer, users of the Inventory may wish to confirm project data with the proponent/developer. The inventory does not breakdown project expenditures by any given year. The cost of a project is the value of expenditures expected over all phases of project construction, which may span over two or more years. Cost of projects listed in the Inventory are estimated values only. Source: Alberta Economic Development, 2004.

Value of Projects by Sector (as of September 2006)



Project Status	Number of Projects	Project Cost
Proposed	1	\$10,000,000
Total	1	\$10,000,000

This inventory lists projects in Alberta that have recently been completed, are under construction, or are proposed to start construction. Not all projects are listed due to reasons of confidentiality and/or due to information not being available at the time of printing. Project data is obtained from public information sources, where possible, this data has been verified with the project proponent/developer, users of the Inventory may wish to confirm project data with the proponent/developer. The inventory does not breakdown project expenditures by any given year. The cost of a project is the value of expenditures expected over all phases of project construction, which may span over two or more years. Cost of projects listed in the Inventory are estimated values only. Source: Alberta Economic Development, 2004.

Largest Projects in Provost as of September 2006

Company Name	Project Description	Project Location	Project Cost	Construction Schedule	Status
Town of Provost	Multi - Use Recreation Facility	Provost	\$10,000,000	-	Proposed

Disclaimer: Information in this profile has been provided from a variety of external sources. Although every effort has been made to ensure the accuracy, currency and reliability of the content and data, AlbertaFirst.com Ltd. accepts no responsibility in this regard.

© AlbertaFirst.com Ltd., 2006.