

Foremost

www.foremostalberta.com

Welcome

As the Mayor of the Village of Foremost, I would like to extend a welcome to our community on behalf of Village Council. This is a small but active community with a wide variety of amenities. We are very proud of the recreational and cultural activities available here, and invite you to visit our village and see for yourself what we have to offer.

A broad range of businesses provide residents and visitors with services they would otherwise have to travel to larger centres for. Groceries, clothing, hardware, farm supplies and services are all available, as well as beauty salons, a fitness centre, banking services, a craft store and a post office. Accommodations and restaurants are also readily available.

Our community's economic base is farming, with many generations of families continuing to operate successful farming operations. This provides for a steady population in our area.

Foremost is a very family-oriented community with an award winning school, which caters to from Kindergarten to Grade 12. Foremost School was the recent recipient of the Overall Excellence Award for non-selective schools, an award presented by The Fraser Institute. The Village offers hockey, figure skating, curling, swimming, exercise classes, the Wayside Campground and community groups for young and old. The yearly rodeo and Spring and Fall theatrical productions are looked forward to by everyone. The Village of Foremost is in close proximity to such major parks as [Writing-on-Stone](#), [Forty Mile Park](#), [Cypress Hills Interprovincial Park](#), and the [Red Rock Coulee Natural Area](#).

If you are passing through or making our community your home, I welcome you and trust that you will enjoy your time with us.

Yours truly,

Ken Kultgen
Mayor of Foremost

You may also tour our community on our website www.foremostalberta.com.

Area Overview

Foremost offers a small town atmosphere, with big city appeal.

The Village of Foremost is located 110 km (68 miles) east of Lethbridge on the Red Coat Trail, Highway 61, and 102 km (63 miles) southwest of Medicine Hat in the County of Forty Mile No. 8. The community was established as an agricultural service centre in 1913 and incorporated as a Village in 1950. Its current population is 531, and it serves as a trading centre for more than 2,000 people.

Foremost means "first" or "at the leading point" and was named by the Canadian Pacific Railway (CPR) in 1913 when the railroad was brought from Lethbridge. Once established as a township by the Alberta Government the entrepreneurial nature of Foremost's residents became apparent. Within months a number of businesses opened: 2 general stores, a pool hall, a restaurant, carpenter shop, drug store, livery barn, hardware store, the start of two grain elevators and four residences; then, soon to follow, a Town Hall and a Post Office.

The Alberta Advantage

Doing business in Alberta definitely carries with it a number of advantages. In 2005 the Conference Board of Canada estimated that Alberta's economy grew by 4.9%. Further, Alberta's exports of goods and services more than tripled in one decade – 1995 to 2005 – to approximately \$86 billion, while manufactured goods doubled to \$59.4 billion. One of the greatest triggers to Alberta's success is its dedication to invest in itself. Investment in Alberta's economy was \$18,250 per capita in 2005, more than double the national average.

The unemployment rate in Alberta in 2005 was 3.9%, the lowest in Canada. (Source: [The Alberta Economy – Economic Results](#))

Click here for information on [Alberta Trade and Export](#).

Community Services

Community Futures Entre-Corp

#202, 556 - 4th Street SE
Medicine Hat, Alberta T1A 0K8
Tel: 1-888-528-2824
Fax: (403) 527-3596
Email: bizinfo@entre-corp.com

Foremost & District Chamber of Commerce

Tel: (403) 867-3077

40 Mile Regional Family and Community Support Services (FCSS)

P.O. Box 159, 119 Main Street
Foremost, Alberta T0K 080
Tel: (403) 867-2766
Email: fcss40ml@la.shockware.com

Forty Mile Youth Connections & Learning Centre

119 Main Street
Foremost, Alberta T0K 080
Tel: (403) 867-3077
Email: youcan1@telusplanet.net

Foremost Municipal Library

103 - 1st Avenue East
Foremost, Alberta T0K 080
Tel: (403) 867-3855
Fax: (403) 867-3858
Email: forlib@shortgrass-lib.ab.ca

Community Booking Contacts - Parties, Meetings, etc.

Community Hall - Village Office Tel: (403) 867-3733
Legion Hall - Foremost Agencies Tel: (403) 867-3805
Civic Centre - George Piper Tel: (403) 867-3505
Flying Club - Carlene Foss Tel: (403) 867-2197

Community Lifestyle

The Village of Foremost provides an affordable, country living lifestyle with great school opportunities and the amenities of larger centres.

Recreation

The Village of Foremost has much to offer in the way of recreation... all year round. In the warmer seasons, enjoy nine holes of golf on our challenging course, or a walk along our scenic and peaceful walking path. A new multiplatform at the school offers tennis and basketball, and our pool is a great break from the summer heat. Plus, the fishing is great at the dam located beside the Wayside Campground and Park. In the winter, enjoy a number of ice sports including curling, hockey, and figure skating, and our wide open spaces offers a variety of recreation for the outdoorsmen.

Foremost is central to a fascinating tourist area, including four parks which give us the name "Gateway to the Parks." Head 15 minutes north on Highway 879 and enjoy water sports and camping at [40 Mile Park](#). [Cypress Hills Interprovincial Park](#) (Elkwater) is 96 miles (60 miles) southeast. The Historical Windmill Museum in Etzikom is on the way, only 15 minutes east. [Waterton Lakes National Park](#) is a beautiful hour and a half drive through the Alberta foothills. Breathtaking Writing-on-Stone Provincial Park is only a 30 minute drive southwest.

Use us as your central point when discovering the many sites in the area. As you can see, we are only a short drive to a different adventure everyday. Along the way you are sure to spot the wildlife that share our area, and see why Foremost is popular with wildlife watchers and hunters.

Community Organizations

Local community groups include the Minor Hockey Association, Men's Recreational Hockey, Old Timer's Hockey Club, figure skating club, curling club, children's T-ball, youth hardball, youth dance club, gymnastics club, men's golf club, ladies' golf club, Jr. golf, the Senior Citizens Association, Brownies, Girl Guides, Pathfinders, Cubs, Men's Basketball, Ladies' Basketball, Adult Volleyball, Fish & Game Association, step-up and power walking, Theatrical Society, B.P.O. Elks, Lions Club, Royal Canadian Legion, T.O.P.S., Agricultural Society, Chamber of Commerce, and the Flying Club.

Local recreational facilities include the Civic Centre, swimming pool, ball diamonds, rodeo grounds, tractor pull track, golf course, walking path, orchard, Wayside Campsite, tennis courts and Fitness Facility.

Religious Services

- Catholic Church
Tel: (403) 545-2023
- Church of Jesus Christ of Latter Day Saints
Tel: (403) 883-3814
- Evangelical Free Church
Tel: (403) 867-3559
- Trinity Lutheran Church
Tel: (403) 867-3692
- United Church
Tel: (403) 867-3992

Special Annual Events/Attractions

- Annual Rodeo
- Theatrical Society - Fall Dinner Theatre & Spring Production

Accommodations

- Cedar Villa Motel
Box 386
Foremost, Alberta T0K 0X0
Tel: (403) 867-3611
Fax: (403) 867-2165

Email: jonikki@telus.net

- Coulee Ridge Bed & Breakfast
Box 454
Foremost, Alberta T0K 0X0
Tel/Fax: (403) 867-2348
- Wayside Campsite

Restaurants

- Y'all Come Back Saloon
Tel: (403) 867-0003

Businesses in Foremost

- Grocery Store
- Hardware Store
- Liquor Store
- Family & Community Support Services
- Forty Mile Youth Connections
- Clothing Store
- Insurance Agency
- Craft/Gift Stores
- Lumber Yard
- Hairdressing Shops
- Bulk Fuel Station
- Agricultural Services
- Sears Outlet

Economic Base

The major economic strength in the Foremost area is agriculture. Products made in the area include wheat, barley, rye, flax, canola, oats, peas, beef cattle, hogs, and poultry. There is a total of 1.75 million acres of farm land in the region and approximately 10% is irrigated. Within Foremost there are a number of agricultural service companies from seed cleaning to grain hauling to assist in any agricultural production needs.

The following outlines agricultural production in the Foremost Region:

Crops by Acres		Livestock and Poultry	
Wheat	432,022	Cattle	73,970
Oats	7,920	Pigs	50,144
Barley	55,957	Sheep/Lambs	2,813
Mixed Grains	1,694	Chickens/Hens	150,486
Rye	1,355		
Alfalfa	22,550		
Canola (Rapeseed)	6,424		
Dry Field Peas	21,524		

Lentils	3,019		
---------	-------	--	--

(Source: Census of Agriculture, 2001)

Resources available locally include natural gas, coal, and oil. Based in the Palliser Region, there are is business potential in the following areas: agri-food, chemicals/rubber and plastics, defence, energy, engineering and construction, metal fabrication and machinery, non-metallic minerals, technology and tourism/entertainment (Source: [Palliser Economic Partnership](#)).

Natural Resources/Research

The [Crop Diversification Centre South \(CDC\)](#), based in Brooks Alberta, has a Field Station in the County of Forty Mile. The CDC's mandate is to promote the development and growth of crop diversification in Alberta through applied research and technology transfer.

The [Defence Research and Development Canada Suffield](#) station conducts research in two main areas. The first area is military engineering, mobility systems and weapons system evaluation and the second is surrounding the defence of chemical and biological warfare.

Economic Facts

Major Businesses Products/Services

Foremost has a number of businesses that many communities of the same size do not have access to without having to travel. Therefore residents and business owners are able to support one another by shopping within the Village. Foremost also has a significant amount of service companies for both the agricultural and oil and gas industries. To view Foremost's Business Directory click on the following link: [Foremost Business Directory](#).

Financial Institutions

RBC Royal Bank
Tel: (403) 867-3500

Alberta Treasury Branch (ATB Financial)
Tel: (403) 867-2069

Education

Foremost is part of the [Prairie Rose School Division #8](#), headquartered in Dunmore - Tel: (403) 527-5516.

Daycare/Nursery

Private daycare facilities are available within the village. For more information contact Family and Community Support Services at Tel: (403) 867-2766.

Foremost School provides education for Grades K to 12 and has an enrollment of approximately 280 students. Foremost School has recently been awarded with an Overall Excellence Award from The Fraser Insitute. for non-select schools. The pupil-teacher ratio is very low and as a result the school can offer a number of special programs such as a Fine Arts Program; a computer program beginning in grade 4; French beginning in grade 7 and a Work Experience Program for high school students. In addition, there is a well planned intra-mural and extra-curricular sports program.

Emergency Services

Fire and Ambulance Services

Foremost has an active volunteer Fire department and Ambulance Squad. The Village owns and operates its own fire truck and ambulance. There are 26 fire hydrants in the Village and all buildings are within 1,000 feet of a hydrant. The ambulance is fully equipped and nurses are available to be in attendance when necessary. Paramedic services and air ambulance services are available through Medicine Hat, when needed.

Village of Foremost/County of Forty Mile No. 8 Fire Chief Miles Beacom.

Tel: (403) 867-3940 or in an emergency Tel: 9-1-1

Police Services

Foremost is served by Foremost/Bow Island detachment of the Royal Canadian Mounted Police Tel: (403) 867-3545. Two constables reside in Foremost.

Health Care

Health care services are provided by 3 visiting doctors, and 1 health unit, 1 visiting massage therapist, 1 visiting chiropractor. Laboratory services are also available at the clinic by technicians.

Medical Clinic

212 Main Street

Tel: (403) 867-3866

In case of an emergency or after hours contact 9-1-1 or Bow Island Hospital Tel: (403) 545-2211.

Key Contacts for Business Development

Municipal

Village of Foremost

Box 159

Foremost, Alberta T0K 0X0

Tel: (403) 867-3733

Fax: (403) 867-2031

Email: Vlg4most@telusplanet.net

Ken Kultgen

Mayor

Kelly Calhoun

Municipal Administrator

County of Forty Mile No. 8

303 Main Street

Foremost Alberta

Tel: (403) 867-3530

County Administrator: Dale Brown

Public Works Shop

Tel: (403) 867-3940

Agricultural Shop

Tel: (403) 867-3939

Provincial (Updated October 2006)

Alberta Agriculture, Food and Rural Development

312 Main Street

Foremost, Alberta

Tel: (403) 867-3606, or 1-800-449-7344

Alberta Economic Development

109 Provincial Building

346 - 3rd Street, SE

Medicine Hat, Alberta T1A 0G7

Tel: (403) 529-3630

Fax: (403) 529-3140

Elvira Smid, Regional Manager

Email: elvira.smid@gov.ab.ca

Gloria Filgas, Information Officer

Email: gloria.filgas@gov.ab.ca

Leonard Mitzel

Member of the Legislative Assembly [MLA]

Cypress-Medicine Hat Constituency

620 Legislature Annex

9718 - 107th Street

Edmonton, Alberta T5K 1E4

Tel: (780) 415-9590

Fax: (780) 415-0951

Trans Canada Place

#3 1299, Trans Canada Way

Medicine Hat, Alberta T1B 1H9

Tel: (403) 528-2191, or 1-866-339-2191

Fax: (403) 528-2278

Federal (Updated May 2001)

Monte Solberg

Member of Parliament [MP]

Medicine Hat Constituency

House of Commons

Ottawa, Ontario K1A 0A6

Tel: (613) 992-4516

Constituency Office:

P.O. Box 640

Brooks, Alberta T1R 1B6

Tel: (403) 362-7677

Location

The Village of Foremost is located in the County of Forty Mile No. 8, in southeast Alberta.

Proximity to Other Locations

Location	Distance from Foremost	
	Kilometres	Miles
Lethbridge	100	60
Medicine Hat	102	63
Calgary	325	202
Edmonton	620	385
Coutts – 24 hour US Border Crossing	88	55
Port Vancouver, Canada	1610	1000
Spokane, USA	850	528
Seattle, USA	1390	864

Post Secondary Education

Foremost residents have access to post-secondary institutions in Lethbridge - [University of Lethbridge](#), [Lethbridge Community College](#) - and Medicine Hat - [Medicine Hat College](#).

The [Corporate Education Network \(CENetwork\)](#) is a comprehensive website that promotes a "one-stop-shop" of training services available to individuals and businesses in Southeast Alberta. Users of the CENetwork can research, compare and register for training courses, events, and facilities, all in one centralized online location.

This initiative was made possible through a partnership with Community Futures Entre-Corp Business Development, Medicine Hat College, Palliser Economic Partnership and the Office of Learning Technologies - Human Resources and Social Development.

Taxation

	Residential/Farmland	Non-Residential
2005		
Municipal Tax Rate	12.6832	12.6832
Education – Alberta School Foundation Fund Tax Rate	4.2576	6.3303
Seniors Lodge Accommodation Tax Rate	0.4323	0.4323

The total average residential tax is \$1,073.

Transportation

Air Service

The Foremost Community Airport has a 914.63 metre (2,999.99 feet) runway and all-weather facilities. The nearest commercial and air freight services are available in Medicine Hat, 102 km (63 miles) northeast of Foremost.

Rail Service

Foremost is served by a Canadian Pacific Railway branch line.

Highways

Connecting highways include Highway 61 to Elkwater ([Cyress Hills Provincial Park](#)), and leads west to Lethbridge (via Highway 4) and east to Orion, and Secondary Highway 879, leading north to Bow Island and south to Writing-On-Stone Provincial Park.

Trucking Firms

Lynn's Foremost Transport - (403) 223-3111

Bus Services

Call Greyhound at 1-800-661-8747 for service details.

Couriers and Taxis

Loomis and Purolator Couriers

Utilities

Electrical Power

EPCOR
Tel: 310-4300

Natural Gas

ATCO
119 Railway Avenue West
Bow Island, Alberta T0K 0G0
Tel: 403-545-2927

Telephone

Telus Communications Inc.
Box 610, 804 - 4th Avenue South
Lethbridge, Alberta T1J 3Z4
Tel: (403) 310-2255

Water Supply

The Village drinking water is obtained from three artesian wells. The well water is very soft with high contents of fluoride and soda. The well water should not be used for house plants or for extended use on lawns and/or gardens. Foremost has an irrigation system which is designed to provide water for residential lawns and gardens. The water is not metered but is provided through the summer months at a charge of \$75.00 yearly. Hard water for coffee, plants, etc. is available from a coin operated cistern located at the rear of the Village Office (25 cents per 2.5 gallon). Water is typically hauled on the first Wednesday of each month at a minimum charge

of \$20.00 per stop or \$0.08 per 100 gallons thereafter.

Waste Management

Sewage treatment is provided by a series of lagoons.

Garbage is picked up and hauled to the refuse grounds each Friday at a cost of \$19.70/month. A Recycling Trailer is located in the Village, which accepts plastic, paper and metal products.

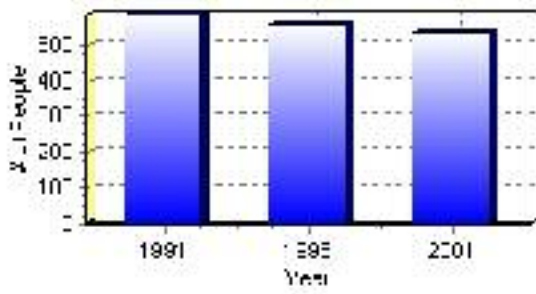
Population

Total Population

Population 2004*	531
Population 2003*	531
Population 2002*	531
Population 2001**	530
Population 2000*	556
Population 1996**	556
Population 1991**	582
Population % change 1991-1996	-4.68%
Population % change 1996-2001	-4.71%

* Source: Official Population List, Alberta Municipal Affairs
** Source: Statistics Canada 1991, 1996, & 2001 Census

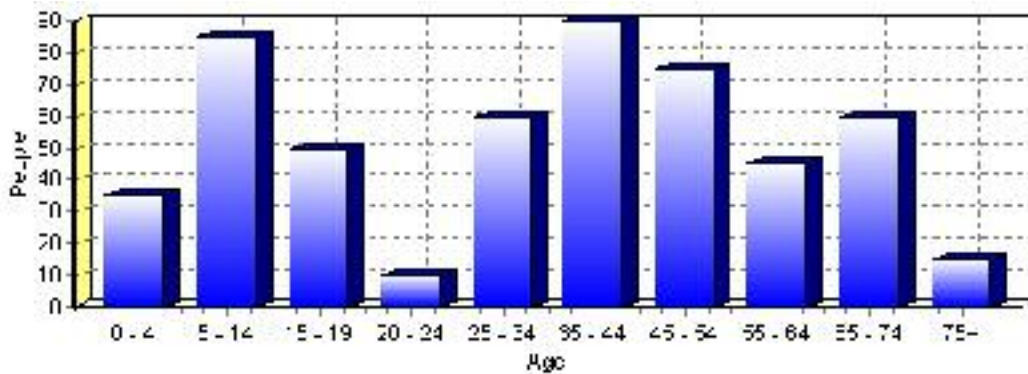
Total Population 1991-2001



Population by Age and Gender	1996 Male	1996 Female	1996 Total	2001 Male	2001 Female	2001 Total
Age 0 - 4	25	15	40	15	20	35
Age 5 - 14	55	45	100	45	40	85
Age 15 - 19	15	25	40	25	25	50
Age 20 - 24	15	10	25	5	5	10
Age 25 - 34	35	35	70	35	25	60
Age 35 - 44	60	50	110	45	45	90
Age 45 - 54	30	25	55	45	30	75
Age 55 - 64	20	30	50	20	25	45
Age 65 - 74	25	20	45	30	30	60
Age 75 and older	15	10	25	10	5	15
Total All Persons	300	260	560	265	265	530

Source: Statistics Canada 1996 & 2001 Census (numbers may not add up due to rounding)

Foremost Population by Age Group (2001)

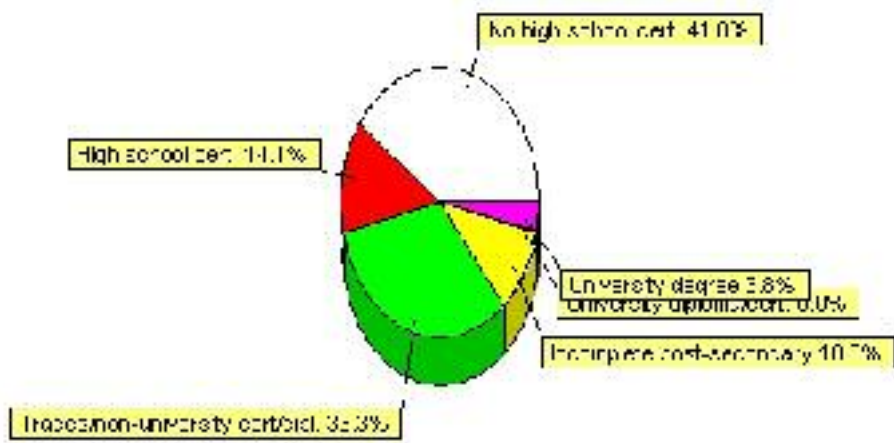


Education Statistics

Highest level of schooling for Population 20yrs and older	2001	%
People without high school certificates	160	41.03%
People with high school certificates	55	14.10%
People with trades or non-university certificate or diploma	130	33.33%
People with post-secondary education (not completed)	40	10.26%
People with university diploma/certificate	0	0.00%
People with university degree	15	3.85%
Total Population 20 years and older	390	100.00%

Source: Statistics Canada 2001 Census (numbers may not add up due to rounding)

Foremost Highest Level of Schooling 2001



Population with Post Secondary Qualifications	1996	%	2001	%
Agriculture and biological sciences	0	0.00%	10	6.90%
Commerce, management and business administration	25	20.00%	50	34.48%
Educational, recreational and counseling services	20	16.00%	10	6.90%
Engineering and applied science tech. and trades	55	44.00%	40	27.59%
Engineering and applied sciences	0	0.00%	0	0.00%
Fine and applied arts	15	12.00%	20	13.79%
Health professionals, science and technologies	0	0.00%	15	10.34%
Humanities and related fields	0	0.00%	0	0.00%
Mathematics and physical sciences	0	0.00%	10	6.90%
Social sciences and related fields	0	0.00%	0	0.00%
Other and/or no specialization	0	0.00%	0	0.00%
Total people with post secondary qualifications	125	100.00%	145	100.00%
Females with post-secondary qualifications	45	36.00%	80	55.17%
Males with post-secondary qualifications	80	64.00%	65	44.83%

Source: Statistics Canada 1996 & 2001 Census (numbers may not add up due to rounding)

Labour Force

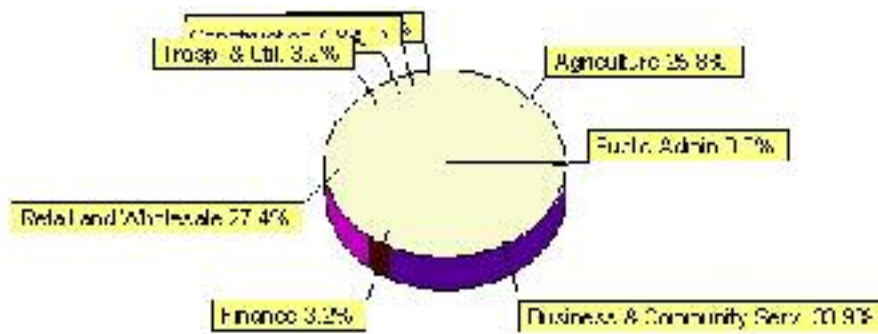
Labour force by activity	1996	2001
In the labour force, both sexes	335	310
Not in the labour force, both sexes	95	115
Total population 15 and over	425	430
Employed, both sexes	320	315
Unemployed, both sexes	15	0
Participation rate, both sexes	78.00%	72.00%
Unemployment rate, both sexes	4.00%	0.00%

Source: Statistics Canada 1996 & 2001 Census (numbers may not add up due to rounding)

Labour Force by Industry Division	1996	% of total	2001	% of total
Agriculture	115	34.33%	80	25.81%
Mining	25	7.46%	15	4.84%
Manufacturing	0	0.00%	0	0.00%
Construction	0	0.00%	15	4.84%
Transportation. & Utilities	60	17.91%	10	3.23%
Retail and Wholesale	15	4.48%	85	27.42%
Finance	15	4.48%	10	3.23%
Business & Community Services	75	22.39%	105	33.87%
Public Administration	25	7.46%	0	0.00%
Total All Industries	335	100.00%	310	100.00%

Source: Statistics Canada 1996 & 2001 Census (numbers may not add up due to rounding)

Foremost Labour Force By Industry - 2001



Labour Force by Major Occupational Groups	1996	%	2001	%
Management occupations	20	5.97%	30	9.52%
Business, Finances and administrative occupations	55	16.42%	60	19.05%
Natural and applied sciences and related occupations	10	2.99%	0	0.00%
Health occupations	0	0.00%	10	3.17%
Occupations in social science; education; government and religion	25	7.46%	10	3.17%
Occupations in art; culture; recreation and sport	0	0.00%	0	0.00%

Sales and service occupations	40	11.94%	70	22.22%
Trades; transport; equipment operators and related occupations	70	20.90%	35	11.11%
Occupations unique to primary industry	90	26.87%	80	25.40%
Occupations unique to processing; manufacturing and utilities	30	8.96%	20	6.35%
Occupations not elsewhere classified	0	0.00%	0	0.00%
Total - All Occupations (major groups)	335	100.00%	315	100.00%
Females - All Occupations	120	35.82%	145	46.03%
Males - All Occupations	215	64.18%	165	52.38%

Source: Statistics Canada 1996 & 2001 Census (numbers may not add up due to rounding)

Income

Family Income (Number of Families)	1996	%	2001	%
less than \$19,999	0	0.00%	15	10.00%
\$20,000 - \$39,999	40	27.59%	50	33.33%
\$40,000 - \$59,999	45	31.03%	30	20.00%
\$60,000 and over	60	41.38%	35	23.33%
Total number of families	145	100.00%	130	86.67%
Average family income	\$60,487		\$57,968	
Median family income	\$55,593		\$45,933	

Source: Statistics Canada 1996 & 2001 Census (numbers may not add up due to rounding)

Household Income (Number of Households)	1996	%	2001	%
less than \$19,999	45	19.57%	35	17.50%
\$20,000 - \$39,999	50	21.74%	75	37.50%
\$40,000 - \$59,999	65	28.26%	45	22.50%
\$60,000 and over	10	4.35%	50	25.00%
Total number of households	230	100.00%	200	100.00%
Average household income	\$49,406		\$48,756	
Median household income	\$46,323		\$38,585	

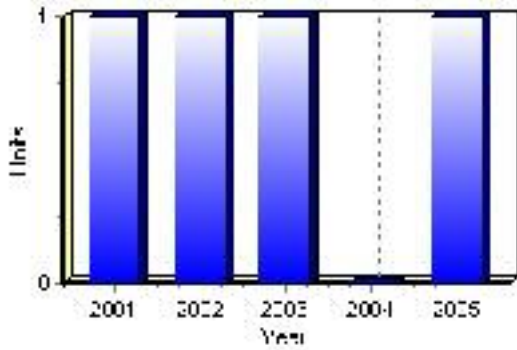
Source: Statistics Canada 1996 & 2001 Census (numbers may not add up due to rounding)

Building Permits

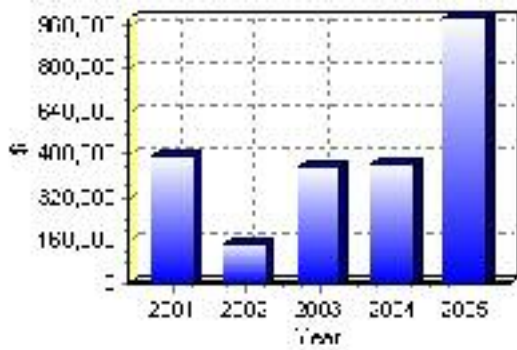
Total Building Permit Values	2001	2002	2003	2004	2005
Building Permits Value, Commercial	\$0	\$0	\$70,000	\$0	\$330,000
Building Permits Value, Industrial	\$120,000	\$80,000	\$100,000	\$402,000	\$16,000
Building Permits Value, Institutional	\$0	\$5,000	\$30,000	\$0	\$250,000
Building Permits Value, Residential	\$359,000	\$60,000	\$233,000	\$47,000	\$392,000
Building Permits Value, Total	\$479,000	\$145,000	\$433,000	\$449,000	\$988,000
Total Housing Starts	1	1	1	0	1

Source: Statistics Canada 2000-2004 Building Permits (numbers may not add up due to rounding)

Total Housing Starts



Value of Building Permits



Dwellings

Occupied Private Dwellings by Type	1996	% of total	2001	% of total
Apartments	0	0.00%	0	0.00%
Detached Duplexes	0	0.00%	0	0.00%
Movable Dwellings	10	4.35%	0	0.00%
Other single attached house	10	4.35%	0	0.00%
Row and semi-detached house	10	4.35%	5	2.50%
Single-detached house	200	86.96%	195	97.50%
Total number of occupied private dwellings	230	100.00%	200	100.00%
Private dwellings, owned	185	80.43%	190	95.00%
Private Dwellings, rented	45	19.57%	10	5.00%

Source: Statistics Canada 1996 & 2001 Census (numbers may not add up due to rounding)

Private Dwellings by Period of Construction	# of Dwellings	% of total
Period of construction, before 1946	45	23.08%
Period of construction, 1946 - 1960	50	25.64%
Period of construction, 1961 - 1970	20	10.26%
Period of construction, 1971 - 1980	50	25.64%
Period of construction, 1981 - 1990	20	10.26%
Period of construction, 1991 - 2001	10	5.13%
Total number of private dwellings constructed	195	100.00%

Source: Statistics Canada 2001 Census (numbers may not add up due to rounding)

Disclaimer: Information in this profile has been provided from a variety of external sources. Although every effort has been made to ensure the accuracy, currency and reliability of the content and data, AlbertaFirst.com Ltd. accepts no responsibility in this regard.

© AlbertaFirst.com Ltd., 2006.