

# Bittern Lake

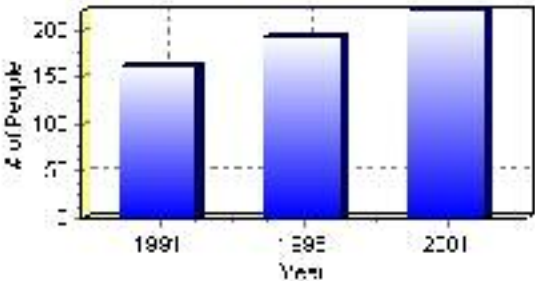
## Population

### Total Population

Population 2004*	221
Population 2003*	221
Population 2002*	221
Population 2001**	220
Population 2000*	193
Population 1996**	193
Population 1991**	161
Population % change 1991-1996	16.58%
Population % change 1996-2001	12.67%

\* Source: Official Population List, Alberta Municipal Affairs  
\*\* Source: Statistics Canada 1991, 1996, & 2001 Census

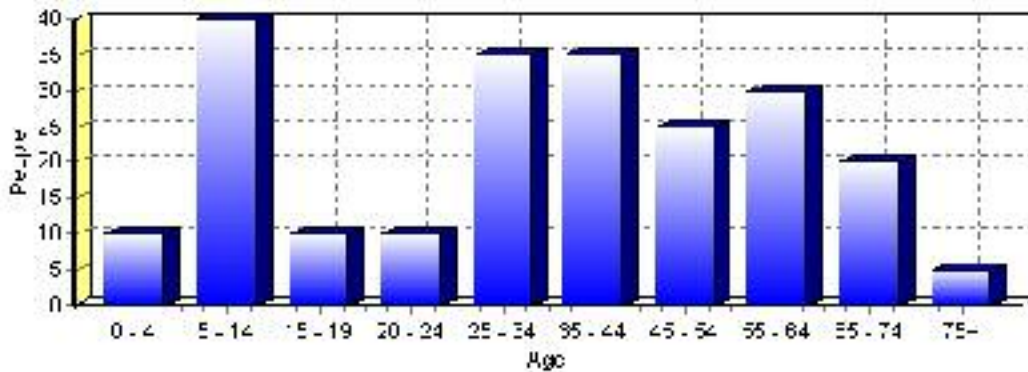
### Total Population 1991-2001



Population by Age and Gender	1996 Male	1996 Female	1996 Total	2001 Male	2001 Female	2001 Total
Age 0 - 4	5	15	20	5	5	10
Age 5 - 14	15	10	25	25	15	40
Age 15 - 19	5	10	15	5	5	10
Age 20 - 24	5	5	10	5	5	10
Age 25 - 34	15	15	30	20	15	35
Age 35 - 44	15	20	35	20	15	35
Age 45 - 54	10	15	25	15	10	25
Age 55 - 64	15	10	25	10	20	30
Age 65 - 74	0	0	0	15	5	20
Age 75 and older	0	0	0	0	5	5
Total All Persons	95	95	190	115	105	220

Source: Statistics Canada 1996 & 2001 Census (numbers may not add up due to rounding)

### Bittern Lake Population by Age Group (2001)

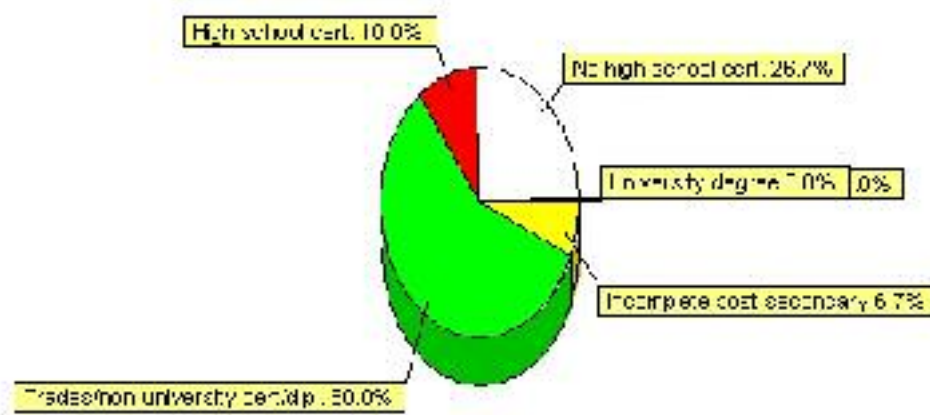


# Education Statistics

Highest level of schooling for Population 20yrs and older	2001	%
People without high school certificates	40	26.67%
People with high school certificates	15	10.00%
People with trades or non-university certificate or diploma	90	60.00%
People with post-secondary education (not completed)	10	6.67%
People with university diploma/certificate	0	0.00%
People with university degree	0	0.00%
Total Population 20 years and older	150	100.00%

Source: Statistics Canada 2001 Census (numbers may not add up due to rounding)

## Bittern Lake Highest Level of Schooling 2001



Population with Post Secondary Qualifications	1996	%	2001	%
Agriculture and biological sciences	0	0.00%	0	0.00%
Commerce, management and business administration	10	18.18%	15	15.79%
Educational, recreational and counseling services	0	0.00%	0	0.00%
Engineering and applied science tech. and trades	20	36.36%	40	42.11%
Engineering and applied sciences	0	0.00%	0	0.00%
Fine and applied arts	0	0.00%	0	0.00%
Health professionals, science and technologies	0	0.00%	25	26.32%
Humanities and related fields	0	0.00%	10	10.53%
Mathematics and physical sciences	0	0.00%	0	0.00%
Social sciences and related fields	10	18.18%	0	0.00%
Other and/or no specialization	0	0.00%	0	0.00%
Total people with post secondary qualifications	55	100.00%	95	100.00%
Females with post-secondary qualifications	25	45.45%	40	42.11%
Males with post-secondary qualifications	30	54.55%	55	57.89%

Source: Statistics Canada 1996 & 2001 Census (numbers may not add up due to rounding)

## Labour Force

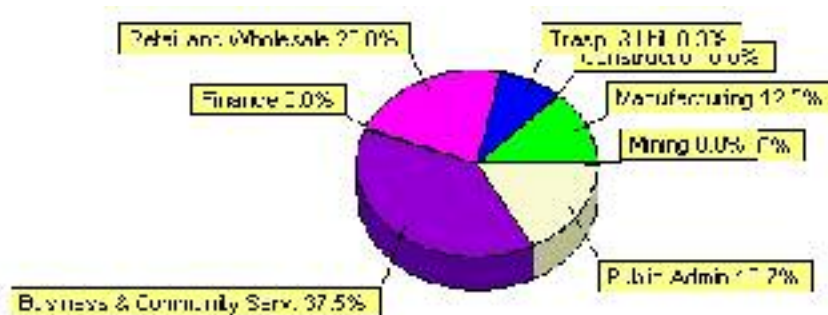
Labour force by activity	1996	2001
In the labour force, both sexes	115	115
Not in the labour force, both sexes	30	30
Total population 15 and over	150	150
Employed, both sexes	90	115
Unemployed, both sexes	30	0
Participation rate, both sexes	77.00%	77.00%
Unemployment rate, both sexes	26.00%	0.00%

Source: Statistics Canada 1996 & 2001 Census (numbers may not add up due to rounding)

Labour Force by Industry Division	1996	% of total	2001	% of total
Agriculture	0	0.00%	0	0.00%
Mining	15	13.64%	0	0.00%
Manufacturing	10	9.09%	15	12.50%
Construction	15	13.64%	0	0.00%
Transportation. & Utilities	10	9.09%	10	8.33%
Retail and Wholesale	25	22.73%	25	20.83%
Finance	0	0.00%	0	0.00%
Business & Community Services	35	31.82%	45	37.50%
Public Administration	0	0.00%	20	16.67%
Total All Industries	110	100.00%	120	100.00%

Source: Statistics Canada 1996 & 2001 Census (numbers may not add up due to rounding)

### Bittern Lake Labour Force By Industry - 2001



Labour Force by Major Occupational Groups	1996	%	2001	%
Management occupations	10	9.09%	25	20.83%
Business, Finances and administrative occupations	15	13.64%	15	12.50%
Natural and applied sciences and related occupations	0	0.00%	0	0.00%
Health occupations	0	0.00%	10	8.33%
Occupations in social science; education; government and religion	0	0.00%	10	8.33%
Occupations in art; culture; recreation and sport	0	0.00%	0	0.00%

Sales and service occupations	30	27.27%	10	8.33%
Trades; transport; equipment operators and related occupations	30	27.27%	35	29.17%
Occupations unique to primary industry	10	9.09%	10	8.33%
Occupations unique to processing; manufacturing and utilities	0	0.00%	10	8.33%
Occupations not elsewhere classified	10	9.09%	0	0.00%
Total - All Occupations (major groups)	110	100.00%	120	100.00%
Females - All Occupations	55	50.00%	45	37.50%
Males - All Occupations	55	50.00%	70	58.33%

Source: Statistics Canada 1996 & 2001 Census (numbers may not add up due to rounding)

---

## Dwellings

<b>Occupied Private Dwellings by Type</b>	<b>1996</b>	<b>% of total</b>	<b>2001</b>	<b>% of total</b>
Apartments	0	0.00%	0	0.00%
Detached Duplexes	0	0.00%	0	0.00%
Movable Dwellings	0	0.00%	0	0.00%
Other single attached house	0	0.00%	0	0.00%
Row and semi-detached house	0	0.00%	0	0.00%
Single-detached house	70	100.00%	80	100.00%
Total number of occupied private dwellings	70	100.00%	80	100.00%
Private dwellings, owned	50	71.43%	75	93.75%
Private Dwellings, rented	20	28.57%	0	0.00%

Source: Statistics Canada 1996 & 2001 Census (numbers may not add up due to rounding)

<b>Private Dwellings by Period of Construction</b>	<b># of Dwellings</b>	<b>% of total</b>
Period of construction, before 1946	0	0.00%
Period of construction, 1946 - 1960	10	12.50%
Period of construction, 1961 - 1970	0	0.00%
Period of construction, 1971 - 1980	0	0.00%
Period of construction, 1981 - 1990	30	37.50%
Period of construction, 1991 - 2001	40	50.00%
Total number of private dwellings constructed	80	100.00%

Source: Statistics Canada 2001 Census (numbers may not add up due to rounding)

Disclaimer: Information in this profile has been provided from a variety of external sources. Although every effort has been made to ensure the accuracy, currency and reliability of the content and data, AlbertaFirst.com Ltd. accepts no responsibility in this regard.

© AlbertaFirst.com Ltd., 2006.