

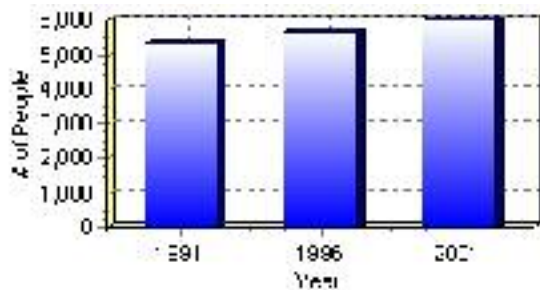
Population

Total Population

Population 2004*	6,012
Population 2003*	6,012
Population 2002*	6,012
Population 2001**	6,010
Population 2000*	6,009
Population 1996**	5,644
Population 1991**	5,317
Population % change 1991-1996	5.79%
Population % change 1996-2001	6.12%

* Source: Official Population List, Alberta Municipal Affairs
** Source: Statistics Canada 1991, 1996, & 2001 Census

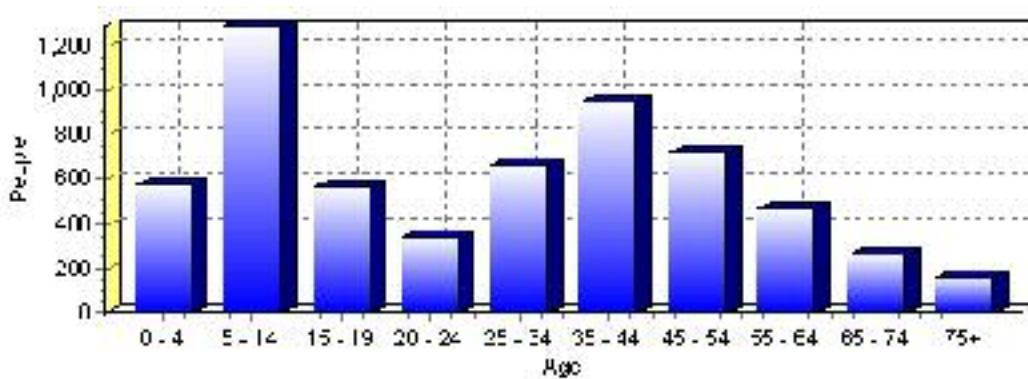
Total Population 1991-2001



Population by Age and Gender	1996 Male	1996 Female	1996 Total	2001 Male	2001 Female	2001 Total
Age 0 - 4	300	240	540	295	280	575
Age 5 - 14	650	565	1,215	665	625	1,290
Age 15 - 19	305	255	560	315	255	570
Age 20 - 24	175	140	315	180	165	345
Age 25 - 34	385	375	760	345	320	665
Age 35 - 44	445	390	835	485	465	950
Age 45 - 54	310	295	605	390	335	725
Age 55 - 64	250	195	445	240	225	465
Age 65 - 74	145	115	260	155	105	260
Age 75 and older	65	55	120	85	75	160
Total All Persons	3,025	2,620	5,645	3,155	2,855	6,010

Source: Statistics Canada 1996 & 2001 Census (numbers may not add up due to rounding)

Taber, M.D. of Population by Age Group (2001)

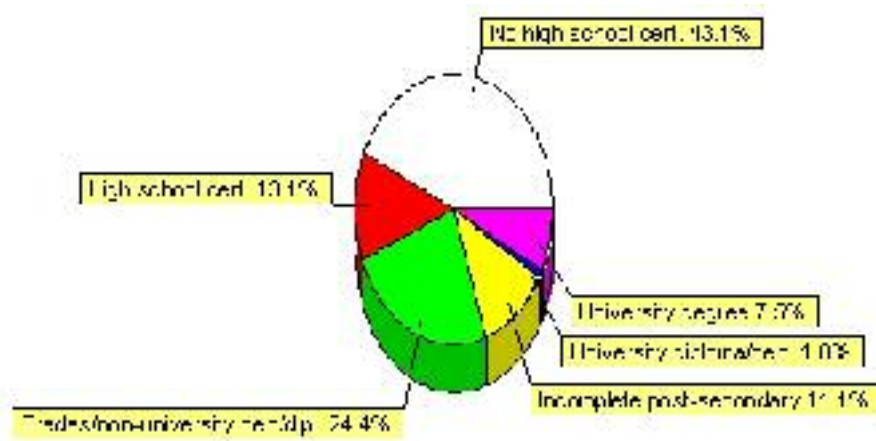


Education Statistics

Highest level of schooling for Population 20yrs and older	2001	%
People without high school certificates	1,530	43.10%
People with high school certificates	465	13.10%
People with trades or non-university certificate or diploma	865	24.37%
People with post-secondary education (not completed)	395	11.13%
People with university diploma/certificate	35	0.99%
People with university degree	265	7.46%
Total Population 20 years and older	3,550	100.00%

Source: Statistics Canada 2001 Census (numbers may not add up due to rounding)

Taber, M.D. of Highest Level of Schooling 2001



Population with Post Secondary Qualifications	1996	%	2001	%
Agriculture and biological sciences	160	15.76%	260	22.22%
Commerce, management and business administration	180	17.73%	205	17.52%
Educational, recreational and counseling services	110	10.84%	120	10.26%
Engineering and applied science tech. and trades	235	23.15%	260	22.22%
Engineering and applied sciences	10	0.99%	0	0.00%
Fine and applied arts	55	5.42%	75	6.41%
Health professionals, science and technologies	165	16.26%	125	10.68%
Humanities and related fields	10	0.99%	25	2.14%
Mathematics and physical sciences	30	2.96%	15	1.28%
Social sciences and related fields	50	4.93%	90	7.69%
Other and/or no specialization	0	0.00%	0	0.00%
Total people with post secondary qualifications	1,015	100.00%	1,170	100.00%
Females with post-secondary qualifications	550	54.19%	615	52.56%
Males with post-secondary qualifications	465	45.81%	555	47.44%

Source: Statistics Canada 1996 & 2001 Census (numbers may not add up due to rounding)

Labour Force

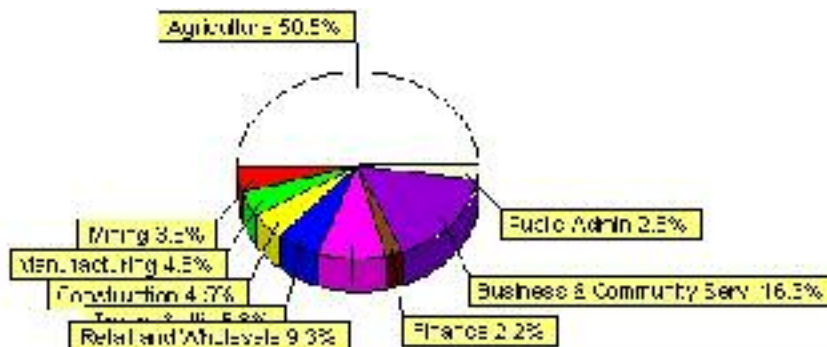
Labour force by activity	1996	2001
In the labour force, both sexes	3,195	3,120
Not in the labour force, both sexes	750	1,000
Total population 15 and over	3,940	4,120
Employed, both sexes	3,125	3,040
Unemployed, both sexes	70	85
Participation rate, both sexes	81.00%	76.00%
Unemployment rate, both sexes	2.00%	3.00%

Source: Statistics Canada 1996 & 2001 Census (numbers may not add up due to rounding)

Labour Force by Industry Division	1996	% of total	2001	% of total
Agriculture	1,775	55.91%	1,575	50.48%
Mining	170	5.35%	120	3.85%
Manufacturing	45	1.42%	145	4.65%
Construction	115	3.62%	140	4.49%
Transportation. & Utilities	165	5.20%	180	5.77%
Retail and Wholesale	285	8.98%	290	9.29%
Finance	55	1.73%	70	2.24%
Business & Community Services	490	15.43%	510	16.35%
Public Administration	55	1.73%	80	2.56%
Total All Industries	3,175	100.00%	3,120	100.00%

Source: Statistics Canada 1996 & 2001 Census (numbers may not add up due to rounding)

Taber, M.D. of Labour Force By Industry - 2001



Labour Force by Major Occupational Groups	1996	%	2001	%
Management occupations	55	1.73%	135	4.33%
Business, Finances and administrative occupations	395	12.42%	335	10.75%
Natural and applied sciences and related occupations	25	0.79%	35	1.12%
Health occupations	85	2.67%	60	1.93%
Occupations in social science; education; government and religion	75	2.36%	80	2.57%
Occupations in art; culture; recreation and sport	20	0.63%	25	0.80%

Sales and service occupations	460	14.47%	380	12.20%
Trades; transport; equipment operators and related occupations	365	11.48%	335	10.75%
Occupations unique to primary industry	1,595	50.16%	1,570	50.40%
Occupations unique to processing; manufacturing and utilities	90	2.83%	165	5.30%
Occupations not elsewhere classified	10	0.31%	0	0.00%
Total - All Occupations (major groups)	3,180	100.00%	3,115	100.00%
Females - All Occupations	1,335	41.98%	1,190	38.20%
Males - All Occupations	1,845	58.02%	1,930	61.96%

Source: Statistics Canada 1996 & 2001 Census (numbers may not add up due to rounding)

Income

Family Income (Number of Families)	1996	%	2001	%
less than \$19,999	170	12.93%	80	6.61%
\$20,000 - \$39,999	420	31.94%	380	31.40%
\$40,000 - \$59,999	335	25.48%	435	35.95%
\$60,000 and over	390	29.66%	275	22.73%
Total number of families	1,315	100.00%	1,170	96.69%
Average family income	\$51,744		\$57,694	
Median family income	\$44,012		\$50,494	

Source: Statistics Canada 1996 & 2001 Census (numbers may not add up due to rounding)

Household Income (Number of Households)	1996	%	2001	%
less than \$19,999	310	19.68%	180	10.75%
\$20,000 - \$39,999	485	30.79%	460	27.46%
\$40,000 - \$59,999	330	20.95%	485	28.96%
\$60,000 and over	125	7.94%	565	33.73%
Total number of households	1,575	100.00%	1,675	100.00%
Average household income	\$48,175		\$54,215	
Median household income	\$39,625		\$48,692	

Source: Statistics Canada 1996 & 2001 Census (numbers may not add up due to rounding)

Dwellings

Occupied Private Dwellings by Type	1996	% of total	2001	% of total
Apartments	0	0.00%	0	0.00%
Detached Duplexes	0	0.00%	0	0.00%
Movable Dwellings	55	3.50%	120	7.14%
Other single attached house	0	0.00%	5	0.30%
Row and semi-detached house	0	0.00%	5	0.30%
Single-detached house	1,525	97.13%	1,555	92.56%
Total number of occupied private dwellings	1,570	100.00%	1,680	100.00%
Private dwellings, owned	1,215	77.39%	1,255	74.70%
Private Dwellings, rented	360	22.93%	420	25.00%

Source: Statistics Canada 1996 & 2001 Census (numbers may not add up due to rounding)

Private Dwellings by Period of Construction	# of Dwellings	% of total
Period of construction, before 1946	210	12.57%
Period of construction, 1946 - 1960	475	28.44%
Period of construction, 1961 - 1970	255	15.27%
Period of construction, 1971 - 1980	305	18.26%
Period of construction, 1981 - 1990	230	13.77%
Period of construction, 1991 - 2001	195	11.68%
Total number of private dwellings constructed	1,670	100.00%

Source: Statistics Canada 2001 Census (numbers may not add up due to rounding)

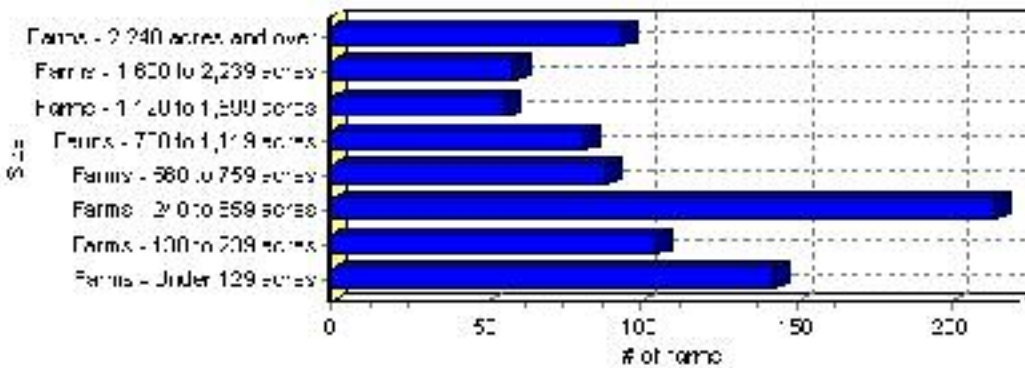
Farming

Taber, M.D. of Total Farm Area : 840 acres

Farms by Total Farm Area (2001)	# of Farms	% of total
Farms - Under 129 acres	143	16.98%
Farms - 130 to 239 acres	105	12.47%
Farms - 240 to 559 acres	214	25.42%
Farms - 560 to 759 acres	89	10.57%
Farms - 760 to 1,119 acres	82	9.74%
Farms - 1,120 to 1,599 acres	56	6.65%
Farms - 1,600 to 2,239 acres	59	7.01%
Farms - 2,240 acres and over	94	11.16%
Total number of farms reporting	842	100.00%

Source: Statistics Canada 2001 Census of Agriculture(numbers may not add up due to rounding)

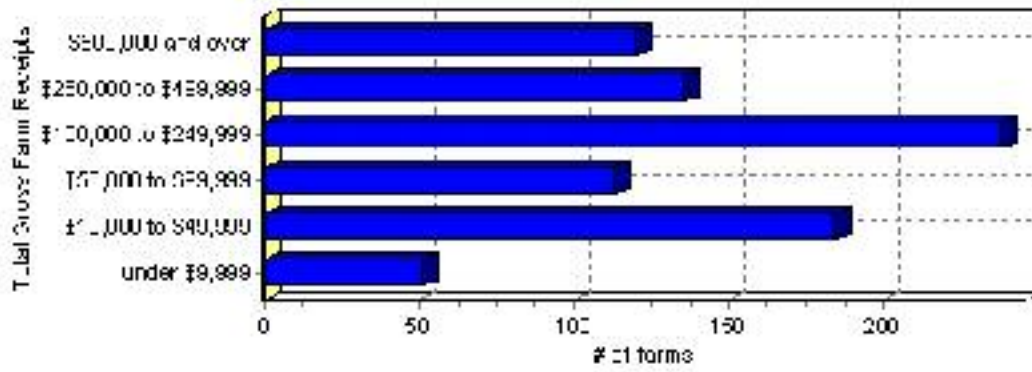
of Farms by Total Farm Area



Farms by Total Gross Farm Receipts - 2001	# of Farms	% of total
Farms gross farm receipts - under \$9,999	51	6.06%
Farms gross farm receipts - \$10,000 to \$49,999	184	21.85%
Farms gross farm receipts - \$50,000 to \$99,999	113	13.42%
Farms gross farm receipts - \$100,000 to \$249,999	238	28.27%
Farms gross farm receipts - \$250,000 to \$499,999	136	16.15%
Farms gross farm receipts - \$500,000 and over	120	14.25%
Total number of farms reporting	842	100.00%

Source: Statistics Canada 2001 Census of Agriculture(numbers may not add up due to rounding)

Total Gross Farm Receipts

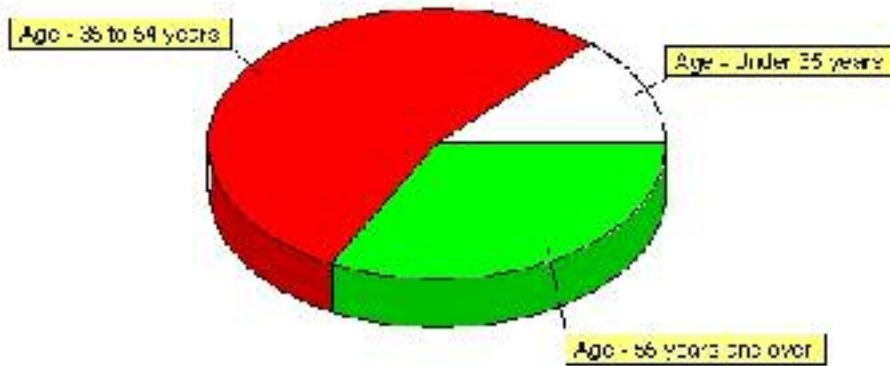


Farming, Continued

Characteristics of Farm Operators	#	%
Age - Under 35 years	150	13.33%
Age - 35 to 54 years	610	54.22%
Age - 55 years and over	370	32.89%
Average age of operators	49	
Number of operators - Female	235	20.89%
Number of operators - Male	890	79.11%
Total number of operators reporting	1,125	100.00%

Source: Statistics Canada 2001 Census of Agriculture(numbers may not add up due to rounding)

Age of Farm Operators



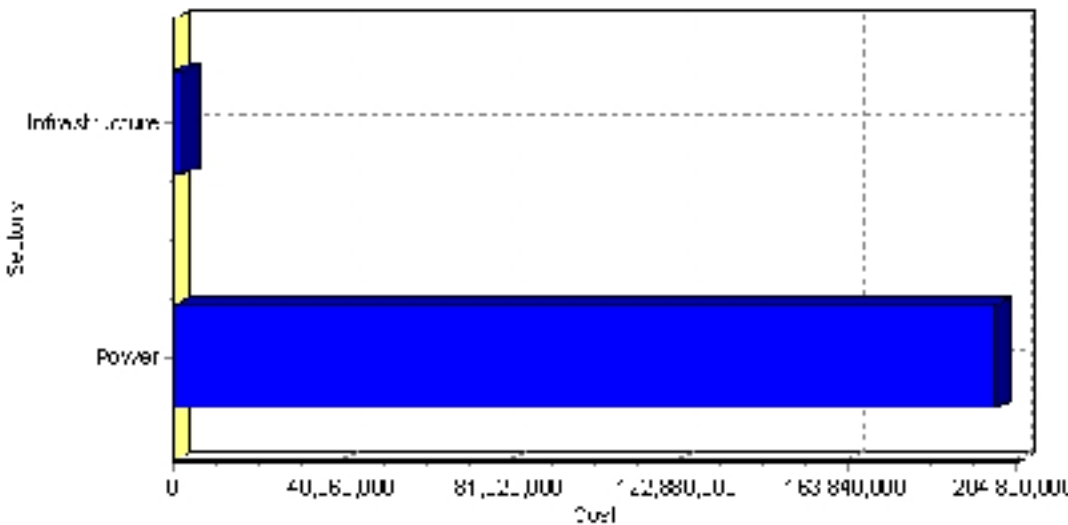
Projects

Summary of Projects in Taber, M.D. as of September 2006

Project Sector	Number of Projects	Project Cost
Power	2	\$200,000,000
Infrastructure	1	\$2,600,000
Total	3	\$202,600,000

This inventory lists projects in Alberta that have recently been completed, are under construction, or are proposed to start construction. Not all projects are listed due to reasons of confidentiality and/or due to information not being available at the time of printing. Project data is obtained from public information sources, where possible, this data has been verified with the project proponent/developer, users of the Inventory may wish to confirm project data with the proponent/developer. The inventory does not breakdown project expenditures by any given year. The cost of a project is the value of expenditures expected over all phases of project construction, which may span over two or more years. Cost of projects listed in the Inventory are estimated values only. Source: Alberta Economic Development, 2004.

Value of Projects by Sector (as of September 2006)



Project Status	Number of Projects	Project Cost
Completed	2	\$62,600,000
Under Construction	1	\$140,000,000
Total	3	\$202,600,000

This inventory lists projects in Alberta that have recently been completed, are under construction, or are proposed to start construction. Not all projects are listed due to reasons of confidentiality and/or due to information not being available at the time of printing. Project data is obtained from public information sources, where possible, this data has been verified with the project proponent/developer, users of the Inventory may wish to confirm project data with the proponent/developer. The inventory does not breakdown project expenditures by any given year. The cost of a project is the value of expenditures expected over all phases of project construction, which may span over two or more years. Cost of projects listed in the Inventory are estimated values only. Source: Alberta Economic Development, 2004.

Largest Projects in Taber, M.D. of as of September 2006

Company Name	Project Description	Project Location	Project Cost	Construction Schedule	Status
ENMAX Corporation	'Purple Springs' Wind Power Facility (80MW)	MD of Taber	\$140,000,000	2006-2007	Under Construction
Suncor Energy Products Inc. / EHN Wind Power Canada / Enbridge Inc.	'Chin Chute' Wind Farm (30MW)	MD of Taber (SW of Taber)	\$60,000,000	2005-2006	Completed
Alberta Infrastructure and Transportation	Highway 3 Grade, Base and Pave (Intersection Improvements at Hwy 36)	MD of Taber	\$2,600,000	2006-2006	Completed

Disclaimer: Information in this profile has been provided from a variety of external sources. Although every effort has been made to ensure the accuracy, currency and reliability of the content and data, AlbertaFirst.com Ltd. accepts no responsibility in this regard.

© AlbertaFirst.com Ltd., 2006.