

Vulcan

www.town.vulcan.ab.ca

Welcome

Welcome to the community of Vulcan. Vulcan is a vibrant and proud community situated in rural Alberta. Vulcan's high quality of life is evident. We offer first class facilities while still maintaining friendly, rural hospitality. Vulcan residents are warm and inviting and have understood for a long time the advantages of our community. The **Town of Vulcan** offers all that you will need and more. We boast great health services, accommodations, recreation, attractions, schools, professional and personal services just to name a few. We invite you to explore Vulcan's frontier, a community that offers you an experience from out of this world! Vulcan Town Council



Town of Vulcan logo



Vulcan's FX6-1995-A Star Ship Enterprise

Area Overview

The Town of Vulcan is a progressive and thriving community that serves as the economic hub and trading centre for Vulcan County. The Town is located midway between Calgary and Lethbridge on Highway 23. Vulcan's economic stability is enhanced by its proximity to major natural gas and oil deposits, both of which allow Vulcan's business community to benefit from the seismic exploration industry. The Town of Vulcan offers all the amenities of a large city while maintaining a warm rural atmosphere. Quality of life, culture/recreation, education, medical and protective services are of the highest standard. Golfing, camping, fishing and a view of the Rocky Mountain Foothills are just a few of the many year-round recreational activities. Vulcan continues its tradition of attracting businesses in all industry sectors, confirming its commitment to growth and economic security. Vulcan has affordable, serviced residential and commercial lots available, as well as a developed industrial park to accommodate new industry. Promoting the science fiction application of its name, the Town of Vulcan holds many events that attract international visitors as well as visitors

from other galaxies! Be sure to stop by the [Tourism & Trek Station](#), where we have information on all of our county communities. The [Town of Vulcan](#) offers its residents a balanced quality lifestyle making this community a great place to call "home".



Vulcan's Golf & Country Club **Opening in 2006 Additional 9 Holes**



Vulcan's space-themed waterpark

Community Services

Municipal

Town of Vulcan
Box 360
Vulcan, Alberta T0L 2B0
Tel: 403-485-2417
Fax: 403-485-2914
vulcan@telusplanet.net

Vulcan Tourism
TEL: (403) 485-2994
Fax: (403) 485-2878
[Michelle's e-mail](#)

Vulcan Business Development Society
(403) 485-4100
edovulcan@wildroseinternet.ca

Vulcan Community Library
TEL: (403) 485-2571

Public Works
TEL: (403) 485-2877
Forman: Kim Fath

Vulcan & District Recreation Board

TEL: (403) 485-2554
Rec. Director: Josh Umsheid

Vulcan & District Family and Community Support Services
TEL: (403) 485-2192

Provincial

Alberta Agriculture
Department of Highways
Alberta Fish and Game

Federal

Canada Post Office
Royal Canadian Mounted Police

Community Lifestyle

Recreation

Vulcan has a wide range of **recreational facilities** to offer you. Vulcan is home to:

- parks and playgrounds
- a 18-hole golf course with grass greens and a clubhouse
- a 4-sheet curling rink -hockey arena
- cultural-recreational centre
- swimming pool
- 5 baseball diamonds
- a rodeo arena
- horseshoe pits

Vulcan is also proud to have an active senior citizens drop-in centre. Vulcan offers fitness for the whole family. Bodyworks Fitness Club is a non-profit community fitness centre featuring an aerobics area, a weight training area, a cardiovascular equipment area as well as squash and racketball courts. Curves for Women is also available for your fitness needs.

Community Organizations

- Lions/Lionettes Clubs
- Kinsmen Club / Kinettes Club
- B.P.O. Elks Lodge
- Odd Fellows Masonic Lodge
- Royal Canadian Legion
- Knights of Columbus
- Legion Auxiliary Order of the Eastern Star
- Chamber of Commerce
- Agricultural Society
- 4-H Clubs
- Cubs, Scouts, Brownies, Rovers.

Religious Services

St. Andrew's Roman Catholic Church St. Aldhelm's Anglican Church Bethel Lutheran Church Vulcan Evangelical Church Vulcan United Church of Canada Church of Christ Victory Family Church

Special Annual Events

- Tinman Triathlon (June 3 2006)
- Spock Days / Galaxyfest Star Trek Convention (June 9-11 2006)
- Show n' Shine, Demolition Derby, Burn Out contest (July 15-16 2006)
- Fly in Breakfast (July 16 2006)
- Vulcans to Vulcan Bike Run (July 15-16 2006)
- Kinette's Christmas Craft Fair (November 19 2005)
- Moonlight Madness (November 24 2005)

Accommodations

Hotels:

Vulcan Country Inn Wheatland Motel Vulcan Hotel

Bed & Breakfasts:

- Prairie Past B & B
- Your Treehouse B & B

Campgrounds:

- Virginia Mitchell Memorial Park 16 sites, \$15.00 per night, fully-serviced, open May to October
- Petro Can RV Campground Full service HWY 23
- Vulcan Municipal Campground 10 sites, no fee, open May to October

Restaurants:

- A & W
- Barleycorn's family restaurant
- Cinnastop
- JJ's Pizza & Subs
- Marble Cafe
- New Club Cafe
- Royal Cafe
- Subway
- Vulcan Bakery
- Vulcan County Inn Restaurant
- Vulcan Hotel Restaurant



Galaxyfest Star Trek Convention



Our musuem: shown here is our rural school room



Vulcan's annual Show n' Shine

Economic Base

Most of the economy of the Vulcan area is based on dryland and irrigated agricultural production. Geophysical drilling and pipeline activity has also become increasingly important to the area, with many gas & oil deposits having been found and put into production.

In addition to the crop-diversified agricultural and oil/gas production, the Vulcan area has the potential and capability of supporting new recreational and industrial development.

Tourism is also becoming a major sector in Vulcan. Due to our unique catch, the Vulcan name, we are attracting many tourists to our town. Our annual [Star Trek convention](#) is known worldwide!



Vulcan Tourism & Trek Station

Economic Facts

Major Businesses Products/Services

- Conoco
- Phillips Oil and Gas
- Cage Transportation Heavy Hauling
- First Street Foods Groceries
- Vulcan Community Health Centre Extendicare

Financial Institutions

- Alberta Treasury Branch
- Canadian Imperial Bank of Commerce
- Macleod Savings and Credit Union



Vulcan's Nights

Education

Vulcan is part of the Palliser Regional School Division #26, headquartered in Lethbridge [Tel: 403-328-4111].

Schools in Vulcan include Hazel Cameron Elementary School [1-6] and County Central High School [7-12]. The schools are equipped with modern classrooms, gymnasiums, laboratory stations, libraries, playground equipment and a track and football field.

Vulcan Daycare Centre

Vulcan is also home to a great daycare facility for the little ones. Daycare/Nursery 403-485-2945.

Vulcan Community Library

Vulcan is home to a library with a great selection. The Vulcan library is a member of the Chinook Arc regional system, allowing you to access items from all over the region. The library offers full service with extended hours and free public access computers.

Emergency Services

All emergency services in Vulcan are accessed by calling 911.

Fire Protection

Vulcan is served by a volunteer fire department with roughly 20 members.

Police Services

Vulcan is served by a local detachment of the Royal Canadian Mounted Police [RCMP] Emergencies: 911 Non Emergencies: [Tel: 403-485-2266].

Vulcan is also home to Citizens on Patrol. This active group ensures that our town is a safe place to live.

Ambulance Services

Local ambulance service is available through the Vulcan & District Emergency Medical Team.

Health Care

The Vulcan Community Health Centre is an 8-bed active facility with 15 long-term care beds, D-level radiology area, fully equipped modern lab and modern emergency area.

Other medical services in Vulcan include:

- Vulcan Medical Clinic
- Dentists
- Chiropractors
- Optometrists
- Podiatrist
- Hearing aid service
- Massage Therapist
- Occupational Therapist
- Mental Health Worker
- Social Worker
- Palliative Care
- Public Health Unit



Key Contacts for Business Development

Municipal

Town of Vulcan
Box 360
Vulcan, Alberta T0L 2B0
Tel: 403-485-2417
Fax: 403-485-2914

David Mitchell
Mayor
[Mayor David Mitchell e-mail](mailto:David.Mitchell@vulcan.ab.ca)

Alcide Cloutier
Chief Administrative Officer
[CAO Alcide E-mail](mailto:Alcide.Cloutier@vulcan.ab.ca)

Tourism Co-ordinator
Dayna Dickens
(403)485-2994
<mailto:dayna@vulcantourism.com>

Leslie Warren
Economic Development Officer
Vulcan Business Development Society
(403) 485-4100
e-mail edovulcan@wildroseinternet.ca

Provincial

Gerry Gibbons
Regional Manager
Alberta Economic Development
105, 200-5th Avenue
South Lethbridge, Alberta T1J 4L1
Tel: 403-381-5414
Fax: 403-381-5741
E-Mail: gerry.gibbons1@gov.ab.ca
E-Mail: mary.swanek@gov.ab.ca

Barry McFarland
Member of the Legislative Assembly [MLA]
Little Bow Constituency
Constituency Office
P.O. Box 231
111 Carman Street
Carmangay, AB T0L 0N0
Phone: (403) 643-2077
Toll Free: 1-800-563-0917
Fax: (403) 643-2024
little.bow@assembly.ab.ca

Legislature Office
#410 Legislature Building

10800 - 97 Avenue
Edmonton, AB T5K 2B6
Phone: (780) 427-0879
Fax: (780) 422-0351

Federal

Member of Parliament (MP)
Macleod Constituency
MENZIES, Ted (Conservative)

Parliamentary Address
House of Commons
Ottawa, Ontario K1A 0A6
Telephone: (613) 995-8471
Fax: (613) 996-9770
E-Mail: Menzies.T@parl.gc.ca

Constituency Address
4925 1st Street West, P.O. Box 40
Claresholm, Alberta T0L 0T0
Telephone: (403) 625-5532 1-866-636-9437
Fax: (403) 625-5592 TTY:
E-Mail: menziest@telus.net

Constituency Office:
126 Elizabeth Street
Okotoks, Alberta T0L 1T0
Tel: 403-938-5005 or 1-800-667-0478
Fax: 403-938-5604

Location

The Town of Vulcan is located in Vulcan County on Highway 23. It is 120 km southeast of Calgary and 100 km north of Lethbridge. Highway 23 is currently a major north-south artery providing a direct link to the U.S. border. Vulcan also runs along secondary highway 534 from Nanton.



Vulcan County Map

Post Secondary Education

Residents of Vulcan have access to post-secondary education institutions in both Lethbridge and Calgary.

Taxation

	<u>Residential/Farmland</u>	<u>Non-Residential</u>
2006		
Municipal Tax Rate	11.8000	16.4000
Education - Alberta School Foundation Fund Tax Rate	4.1300	6.0000
Seniors Lodge Accommodation Tax Rate	.1730	.1730

Transportation

Air Service

Vulcan has a municipal airport with a 3,000 foot paved, lighted runway. The nearest commercial and air freight services are at Lethbridge, while the nearest international airport facility is the Calgary International Airport.

Rail Service

The Town of Vulcan is located on the Canadian Pacific main line. Spurs off the mainline are available.

Highways

Vulcan is located on Highway 23 which links Vulcan with Lethbridge [south] and Highway 2 at High River to Calgary. Secondary Highway 534 also connects to Highway 533 to Highway 2 at Nanton.

Trucking Firms

Vulcan Transport [with warehouse facilities] Vulcan Express

Bus Services

Greyhound Bus Line provides regularly scheduled inter-community service.

Couriers

Two courier companies - Loomis and Purolator - provide pick up and delivery service daily.

Utilities

Electrical Power:

EPCOR

*no local office - Administered from Calgary

Toll Free 310-4300 (hookups and service)

Call centre open 24 hours/day, 7 days/week

ENMAX

* no local office

Toll Free 310-2010

Natural Gas:

ATCO GAS

Local Office:

110 - 3 Avenue North

Vulcan, Alberta T0L 2B0

Tel: 403-485-6570

Telephone

TELUS

* no local office

Toll Free 310-3100

Water Supply:

Town of Vulcan

Public Works

TEL: (403) 485-2877

The water supply is administered by the Town of Vulcan. The total available water is 15,500,000 gallons per month, while the average total in use is 6,620,000 gallons per month.

Waste Management:

Town of Vulcan

Public Works

TEL: (403) 485-2877

Sewage treatment is provided by a four anaerobic cells and three lagoon cells. Usage rates for sewage treatment are \$5.05 per month for residential users and \$5.30 per month for stores and offices.

Garbage collection:

Garbage collection is contracted out, and is collected weekly.

Recycling

Vulcan offers a recycling depot as well as a bottle depot for it's residents.



Vulcan outdoor pool

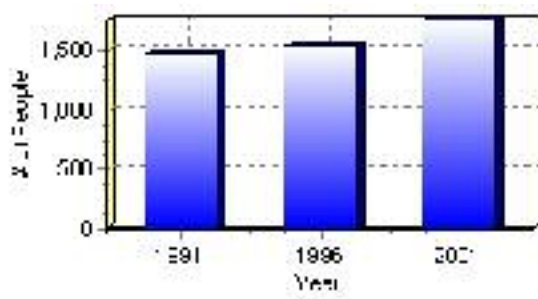
Population

Total Population

Population 2004*	1,762
Population 2003*	1,762
Population 2002*	1,762
Population 2001**	1,760
Population 2000*	1,677
Population 1996**	1,537
Population 1991**	1,466
Population % change 1991-1996	4.62%
Population % change 1996-2001	12.77%

* Source: Official Population List, Alberta Municipal Affairs
** Source: Statistics Canada 1991, 1996, & 2001 Census

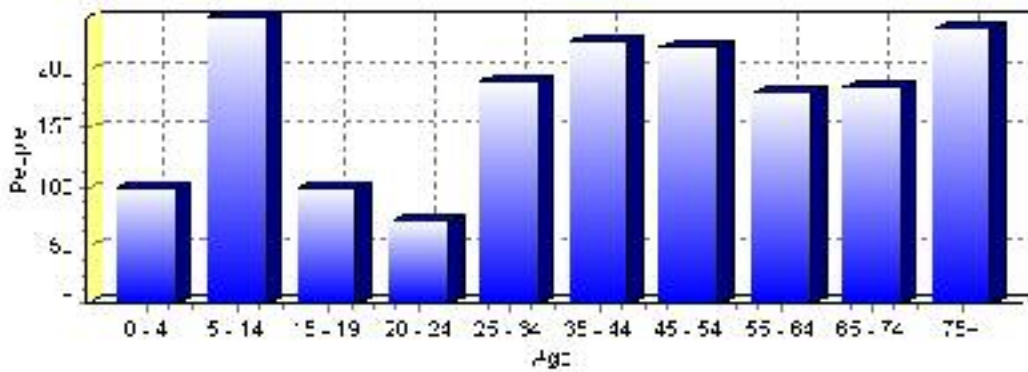
Total Population 1991-2001



Population by Age and Gender	1996 Male	1996 Female	1996 Total	2001 Male	2001 Female	2001 Total
Age 0 - 4	40	45	85	50	50	100
Age 5 - 14	115	85	200	130	115	245
Age 15 - 19	55	40	95	50	50	100
Age 20 - 24	35	30	65	35	35	70
Age 25 - 34	80	90	170	95	95	190
Age 35 - 44	95	95	190	110	115	225
Age 45 - 54	75	110	185	105	115	220
Age 55 - 64	75	65	140	85	95	180
Age 65 - 74	90	110	200	85	100	185
Age 75 and older	80	140	220	90	145	235
Total All Persons	730	810	1,540	840	925	1,765

Source: Statistics Canada 1996 & 2001 Census (numbers may not add up due to rounding)

Vulcan Population by Age Group (2001)

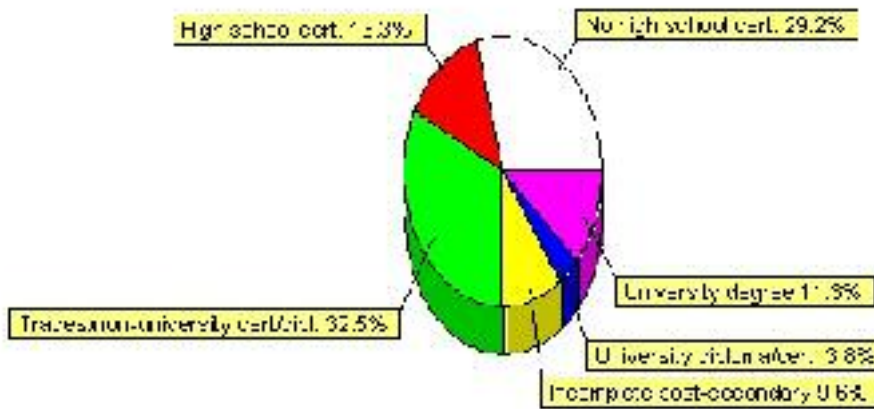


Education Statistics

Highest level of schooling for Population 20yrs and older	2001	%
People without high school certificates	350	29.17%
People with high school certificates	160	13.33%
People with trades or non-university certificate or diploma	390	32.50%
People with post-secondary education (not completed)	115	9.58%
People with university diploma/certificate	45	3.75%
People with university degree	135	11.25%
Total Population 20 years and older	1,200	100.00%

Source: Statistics Canada 2001 Census (numbers may not add up due to rounding)

Vulcan Highest Level of Schooling 2001



Population with Post Secondary Qualifications	1996	%	2001	%
Agriculture and biological sciences	20	4.60%	40	6.96%
Commerce, management and business administration	70	16.09%	140	24.35%
Educational, recreational and counseling services	80	18.39%	110	19.13%
Engineering and applied science tech. and trades	130	29.89%	125	21.74%
Engineering and applied sciences	0	0.00%	15	2.61%
Fine and applied arts	40	9.20%	30	5.22%
Health professionals, science and technologies	55	12.64%	90	15.65%
Humanities and related fields	10	2.30%	0	0.00%
Mathematics and physical sciences	0	0.00%	0	0.00%
Social sciences and related fields	10	2.30%	35	6.09%
Other and/or no specialization	0	0.00%	0	0.00%
Total people with post secondary qualifications	435	100.00%	575	100.00%
Females with post-secondary qualifications	230	52.87%	315	54.78%
Males with post-secondary qualifications	205	47.13%	260	45.22%

Source: Statistics Canada 1996 & 2001 Census (numbers may not add up due to rounding)

Labour Force

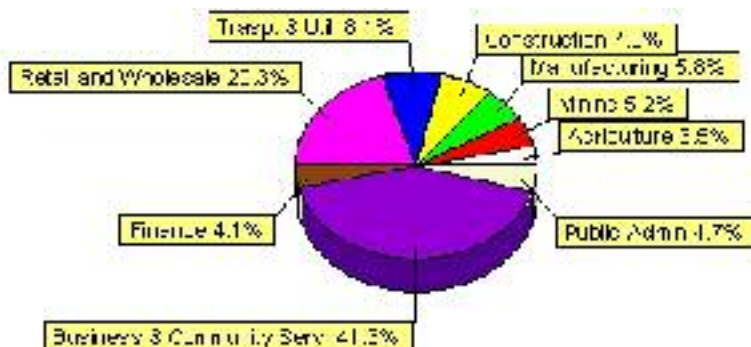
Labour force by activity	1996	2001
In the labour force, both sexes	750	860
Not in the labour force, both sexes	400	455
Total population 15 and over	1,150	1,315
Employed, both sexes	730	830
Unemployed, both sexes	25	35
Participation rate, both sexes	65.00%	65.00%
Unemployment rate, both sexes	3.00%	4.00%

Source: Statistics Canada 1996 & 2001 Census (numbers may not add up due to rounding)

Labour Force by Industry Division	1996	% of total	2001	% of total
Agriculture	80	10.60%	30	3.49%
Mining	65	8.61%	45	5.23%
Manufacturing	45	5.96%	50	5.81%
Construction	70	9.27%	60	6.98%
Transportation. & Utilities	10	1.32%	70	8.14%
Retail and Wholesale	175	23.18%	175	20.35%
Finance	40	5.30%	35	4.07%
Business & Community Services	200	26.49%	355	41.28%
Public Administration	20	2.65%	40	4.65%
Total All Industries	755	100.00%	860	100.00%

Source: Statistics Canada 1996 & 2001 Census (numbers may not add up due to rounding)

Vulcan Labour Force By Industry - 2001



Labour Force by Major Occupational Groups	1996	%	2001	%
Management occupations	60	8.00%	100	11.63%
Business, Finances and administrative occupations	95	12.67%	160	18.60%
Natural and applied sciences and related occupations	10	1.33%	15	1.74%
Health occupations	30	4.00%	75	8.72%
Occupations in social science; education; government and religion	60	8.00%	50	5.81%
Occupations in art; culture; recreation and sport	10	1.33%	20	2.33%

Sales and service occupations	210	28.00%	200	23.26%
Trades; transport; equipment operators and related occupations	130	17.33%	155	18.02%
Occupations unique to primary industry	90	12.00%	45	5.23%
Occupations unique to processing; manufacturing and utilities	50	6.67%	45	5.23%
Occupations not elsewhere classified	0	0.00%	0	0.00%
Total - All Occupations (major groups)	750	100.00%	860	100.00%
Females - All Occupations	340	45.33%	405	47.09%
Males - All Occupations	410	54.67%	450	52.33%

Source: Statistics Canada 1996 & 2001 Census (numbers may not add up due to rounding)

Income

Family Income (Number of Families)	1996	%	2001	%
less than \$19,999	40	10.81%	35	9.21%
\$20,000 - \$39,999	120	32.43%	95	25.00%
\$40,000 - \$59,999	75	20.27%	185	48.68%
\$60,000 and over	135	36.49%	90	23.68%
Total number of families	370	100.00%	405	106.58%
Average family income	\$52,247		\$54,194	
Median family income	\$51,072		\$49,335	

Source: Statistics Canada 1996 & 2001 Census (numbers may not add up due to rounding)

Household Income (Number of Households)	1996	%	2001	%
less than \$19,999	145	23.58%	110	15.94%
\$20,000 - \$39,999	190	30.89%	170	24.64%
\$40,000 - \$59,999	125	20.33%	245	35.51%
\$60,000 and over	60	9.76%	160	23.19%
Total number of households	615	100.00%	690	100.00%
Average household income	\$44,074		\$47,633	
Median household income	\$33,426		\$44,178	

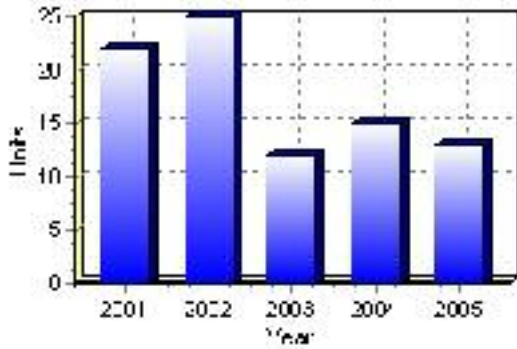
Source: Statistics Canada 1996 & 2001 Census (numbers may not add up due to rounding)

Building Permits

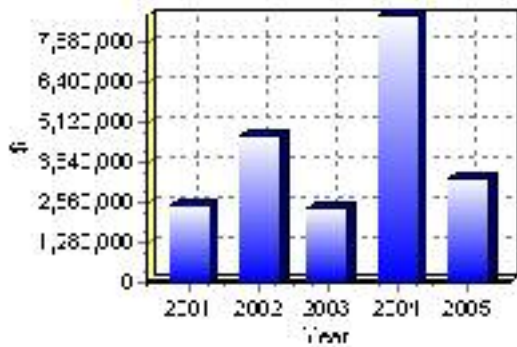
Total Building Permit Values	2001	2002	2003	2004	2005
Building Permits Value, Commercial	\$436,000	\$2,034,000	\$337,000	\$1,856,000	\$270,000
Building Permits Value, Industrial	\$45,000	\$58,000	\$130,000	\$0	\$10,000
Building Permits Value, Institutional	\$0	\$107,000	\$0	\$4,794,000	\$0
Building Permits Value, Residential	\$1,924,000	\$2,461,000	\$1,882,000	\$1,842,000	\$3,068,000
Building Permits Value, Total	\$2,405,000	\$4,660,000	\$2,349,000	\$8,492,000	\$3,348,000
Total Housing Starts	22	25	12	15	13

Source: Statistics Canada 2000-2004 Building Permits (numbers may not add up due to rounding)

Total Housing Starts



Value of Building Permits



Dwellings

Occupied Private Dwellings by Type	1996	% of total	2001	% of total
Apartments	10	1.63%	50	7.25%
Detached Duplexes	10	1.63%	0	0.00%
Movable Dwellings	25	4.07%	20	2.90%
Other single attached house	0	0.00%	0	0.00%
Row and semi-detached house	55	8.94%	40	5.80%
Single-detached house	515	83.74%	575	83.33%
Total number of occupied private dwellings	615	100.00%	690	100.00%
Private dwellings, owned	475	77.24%	555	80.43%
Private Dwellings, rented	140	22.76%	135	19.57%

Source: Statistics Canada 1996 & 2001 Census (numbers may not add up due to rounding)

Private Dwellings by Period of Construction	# of Dwellings	% of total
Period of construction, before 1946	120	17.78%
Period of construction, 1946 - 1960	65	9.63%
Period of construction, 1961 - 1970	125	18.52%
Period of construction, 1971 - 1980	175	25.93%
Period of construction, 1981 - 1990	65	9.63%
Period of construction, 1991 - 2001	125	18.52%
Total number of private dwellings constructed	675	100.00%

Source: Statistics Canada 2001 Census (numbers may not add up due to rounding)

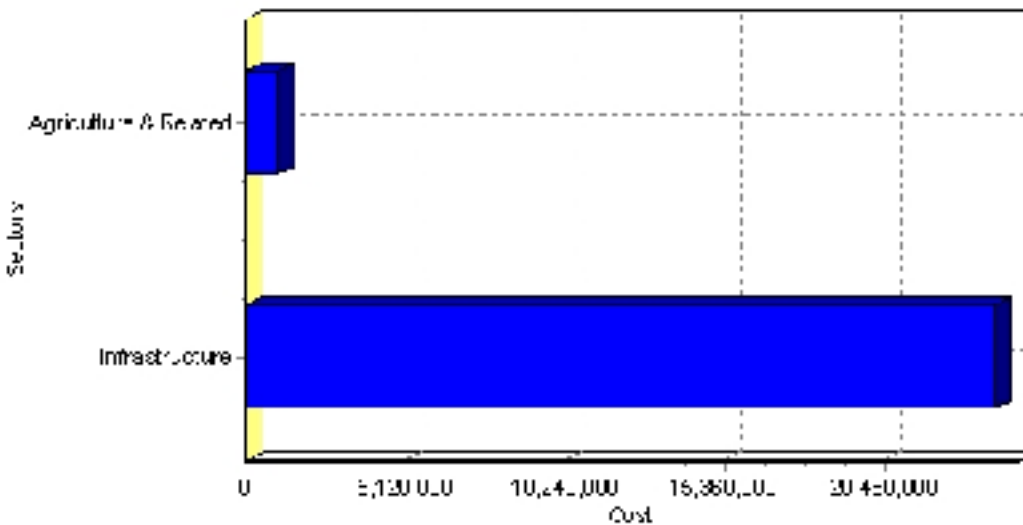
Projects

Summary of Projects in Vulcan as of September 2006

Project Sector	Number of Projects	Project Cost
Infrastructure	4	\$24,000,000
Agriculture & Related	1	\$1,000,000
Total	5	\$25,000,000

This inventory lists projects in Alberta that have recently been completed, are under construction, or are proposed to start construction. Not all projects are listed due to reasons of confidentiality and/or due to information not being available at the time of printing. Project data is obtained from public information sources, where possible, this data has been verified with the project proponent/developer, users of the Inventory may wish to confirm project data with the proponent/developer. The inventory does not breakdown project expenditures by any given year. The cost of a project is the value of expenditures expected over all phases of project construction, which may span over two or more years. Cost of projects listed in the Inventory are estimated values only. Source: Alberta Economic Development, 2004.

Value of Projects by Sector (as of September 2006)



Project Status	Number of Projects	Project Cost
Completed	1	\$300,000
Proposed	3	\$23,700,000
Under Construction	1	\$1,000,000
Total	5	\$25,000,000

This inventory lists projects in Alberta that have recently been completed, are under construction, or are proposed to start construction. Not all projects are listed due to reasons of confidentiality and/or due to information not being available at the time of printing. Project data is obtained from public information sources, where possible, this data has been verified with the project proponent/developer, users of the Inventory may wish to confirm project data with the proponent/developer. The inventory does not breakdown project expenditures by any given year. The cost of a project is the value of expenditures expected over all phases of project construction, which may span over two or more years. Cost of projects listed in the Inventory are estimated values only. Source: Alberta Economic Development, 2004.

Largest Projects in Vulcan as of September 2006

Company Name	Project Description	Project Location	Project Cost	Construction Schedule	Status
Town of Vulcan	Biomass Energy Project	Vulcan	\$15,000,000	-	Proposed
Town of Vulcan	Sewage Lagoons	Vulcan	\$5,500,000	-	Proposed
Town of Vulcan	Tri-Services Building (Fire, EMS and RCMP)	Vulcan	\$3,200,000	-	Proposed
B & B Ag Services	DRY FERTILIZER HANDLING FACILITY	Vulcan County	\$1,000,000	2006-2007	Under Construction
Shawne Contractors	Underpass	Vulcan	\$300,000	2006-2006	Completed

Disclaimer: Information in this profile has been provided from a variety of external sources. Although every effort has been made to ensure the accuracy, currency and reliability of the content and data, AlbertaFirst.com Ltd. accepts no responsibility in this regard.

© AlbertaFirst.com Ltd., 2006.