

Rosalind

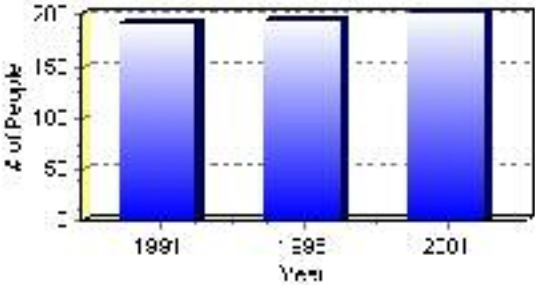
Population

Total Population

Population 2004*	202
Population 2003*	190
Population 2002*	190
Population 2001**	190
Population 2000*	195
Population 1996**	195
Population 1991**	192
Population % change 1991-1996	1.54%
Population % change 1996-2001	-2.63%

* Source: Official Population List, Alberta Municipal Affairs
** Source: Statistics Canada 1991, 1996, & 2001 Census

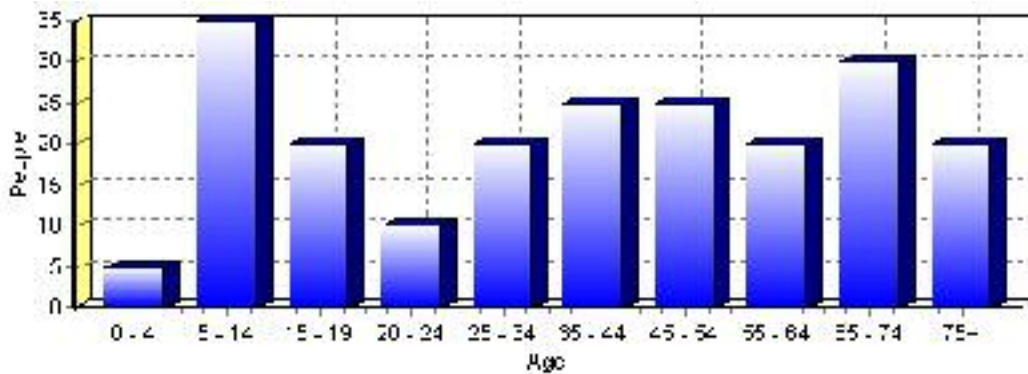
Total Population 1991-2001



Population by Age and Gender	1996 Male	1996 Female	1996 Total	2001 Male	2001 Female	2001 Total
Age 0 - 4	10	5	15	5	0	5
Age 5 - 14	10	20	30	20	15	35
Age 15 - 19	5	10	15	10	10	20
Age 20 - 24	5	0	5	5	5	10
Age 25 - 34	15	10	25	10	10	20
Age 35 - 44	10	10	20	10	15	25
Age 45 - 54	5	15	20	15	10	25
Age 55 - 64	15	5	20	10	10	20
Age 65 - 74	10	10	20	15	15	30
Age 75 and older	10	10	20	10	10	20
Total All Persons	90	100	190	95	95	190

Source: Statistics Canada 1996 & 2001 Census (numbers may not add up due to rounding)

Rosalind Population by Age Group (2001)

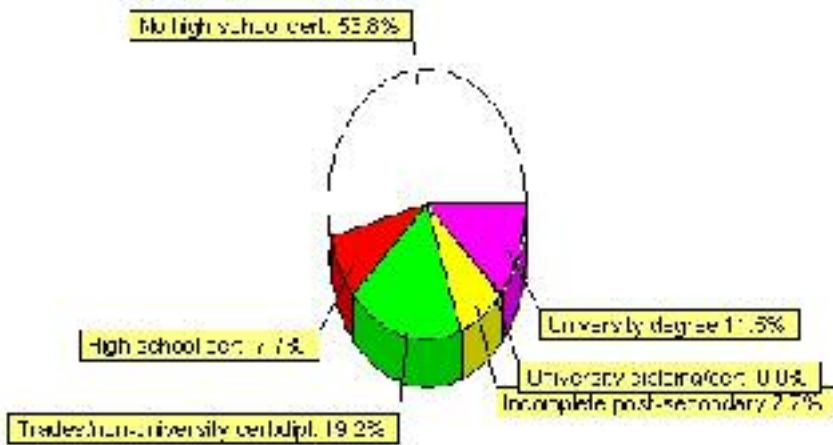


Education Statistics

Highest level of schooling for Population 20yrs and older	2001	%
People without high school certificates	70	53.85%
People with high school certificates	10	7.69%
People with trades or non-university certificate or diploma	25	19.23%
People with post-secondary education (not completed)	10	7.69%
People with university diploma/certificate	0	0.00%
People with university degree	15	11.54%
Total Population 20 years and older	130	100.00%

Source: Statistics Canada 2001 Census (numbers may not add up due to rounding)

Rosalind Highest Level of Schooling 2001



Population with Post Secondary Qualifications	1996	%	2001	%
Agriculture and biological sciences	10	18.18%	0	0.00%
Commerce, management and business administration	20	36.36%	10	20.00%
Educational, recreational and counseling services	0	0.00%	0	0.00%
Engineering and applied science tech. and trades	15	27.27%	20	40.00%
Engineering and applied sciences	0	0.00%	0	0.00%
Fine and applied arts	0	0.00%	0	0.00%
Health professionals, science and technologies	0	0.00%	10	20.00%
Humanities and related fields	0	0.00%	0	0.00%
Mathematics and physical sciences	0	0.00%	0	0.00%
Social sciences and related fields	0	0.00%	0	0.00%
Other and/or no specialization	0	0.00%	0	0.00%
Total people with post secondary qualifications	55	100.00%	50	100.00%
Females with post-secondary qualifications	35	63.64%	20	40.00%
Males with post-secondary qualifications	20	36.36%	30	60.00%

Source: Statistics Canada 1996 & 2001 Census (numbers may not add up due to rounding)

Labour Force

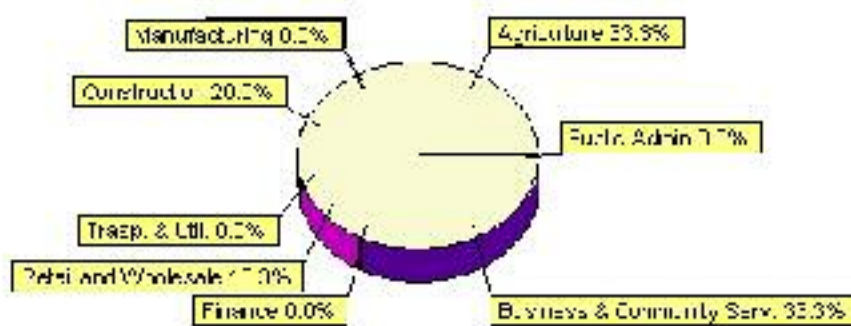
Labour force by activity	1996	2001
In the labour force, both sexes	60	75
Not in the labour force, both sexes	105	70
Total population 15 and over	165	145
Employed, both sexes	60	75
Unemployed, both sexes	0	0
Participation rate, both sexes	36.00%	52.00%
Unemployment rate, both sexes	0.00%	0.00%

Source: Statistics Canada 1996 & 2001 Census (numbers may not add up due to rounding)

Labour Force by Industry Division	1996	% of total	2001	% of total
Agriculture	10	16.67%	25	33.33%
Mining	0	0.00%	0	0.00%
Manufacturing	0	0.00%	0	0.00%
Construction	15	25.00%	15	20.00%
Transportation. & Utilities	10	16.67%	0	0.00%
Retail and Wholesale	0	0.00%	10	13.33%
Finance	10	16.67%	0	0.00%
Business & Community Services	10	16.67%	25	33.33%
Public Administration	0	0.00%	0	0.00%
Total All Industries	60	100.00%	75	100.00%

Source: Statistics Canada 1996 & 2001 Census (numbers may not add up due to rounding)

Rosalind Labour Force By Industry - 2001



Labour Force by Major Occupational Groups	1996	%	2001	%
Management occupations	10	16.67%	10	12.50%
Business, Finances and administrative occupations	15	25.00%	0	0.00%
Natural and applied sciences and related occupations	0	0.00%	0	0.00%
Health occupations	10	16.67%	0	0.00%
Occupations in social science; education; government and religion	0	0.00%	20	25.00%
Occupations in art; culture; recreation and sport	0	0.00%	0	0.00%

Sales and service occupations	0	0.00%	0	0.00%
Trades; transport; equipment operators and related occupations	20	33.33%	10	12.50%
Occupations unique to primary industry	10	16.67%	30	37.50%
Occupations unique to processing; manufacturing and utilities	0	0.00%	10	12.50%
Occupations not elsewhere classified	0	0.00%	0	0.00%
Total - All Occupations (major groups)	60	100.00%	80	100.00%
Females - All Occupations	20	33.33%	30	37.50%
Males - All Occupations	40	66.67%	50	62.50%

Source: Statistics Canada 1996 & 2001 Census (numbers may not add up due to rounding)

Dwellings

Occupied Private Dwellings by Type	1996	% of total	2001	% of total
Apartments	0	0.00%	0	0.00%
Detached Duplexes	0	0.00%	0	0.00%
Movable Dwellings	10	11.76%	0	0.00%
Other single attached house	0	0.00%	0	0.00%
Row and semi-detached house	0	0.00%	0	0.00%
Single-detached house	75	88.24%	75	100.00%
Total number of occupied private dwellings	85	100.00%	75	100.00%
Private dwellings, owned	75	88.24%	70	93.33%
Private Dwellings, rented	10	11.76%	10	13.33%

Source: Statistics Canada 1996 & 2001 Census (numbers may not add up due to rounding)

Private Dwellings by Period of Construction	# of Dwellings	% of total
Period of construction, before 1946	15	20.00%
Period of construction, 1946 - 1960	10	13.33%
Period of construction, 1961 - 1970	20	26.67%
Period of construction, 1971 - 1980	20	26.67%
Period of construction, 1981 - 1990	10	13.33%
Period of construction, 1991 - 2001	0	0.00%
Total number of private dwellings constructed	75	100.00%

Source: Statistics Canada 2001 Census (numbers may not add up due to rounding)

Disclaimer: Information in this profile has been provided from a variety of external sources. Although every effort has been made to ensure the accuracy, currency and reliability of the content and data, AlbertaFirst.com Ltd. accepts no responsibility in this regard.

© AlbertaFirst.com Ltd., 2006.