

Lac La Biche

www.townllb.com

Welcome



Welcome to **Lac La Biche** one of Alberta's oldest communities. Whether you are coming for a visit or planning to relocate to our community, we welcome you with a smile and handshake. There is always something to see or do when you come here.

As the gateway to **Lakeland Provincial Park** we are at the doorstep of unlimited recreational opportunities. As a growing community of 2,700 we offer a host of services for even the most discriminating tastes. The Lac La Biche region is a marketplace of over 10,000 people, with a wide variety of cultures that add a unique flavor to the community.

Area Overview



Located in northeastern Alberta, the **Lac La Biche Region** is an area with a proud past, a strong today, and an ambitious tomorrow. One need only look to the name of the region's largest centre - **Lac La Biche** - for evidence of the area's noble link to the past. In the language of the Cree its name is Wa-has-shu-sea-haven: Haunt of the Female Deer. Translated into French, it's **Lac La Biche** , and the English Version: Lake of the Deer.

There's the other secret to the success and charm of this rural Alberta area: a grand mixture of cultural and ethnic backgrounds. While some other rural Alberta areas bowed to the pressure of past economic times, **Lac La Biche** and District not only survived, it triumphed, due in part to the tireless sense of enthusiasm and hard work possessed by the region's residents and businesses.

Trace the spirit back to the area's founding Native, French, Scottish and Metis settlers. And with the addition of each new nationality, the spirit lives on, resulting in a district that has the strength to withstand the worst of times, and soar through the best.

Lac La Biche and District comprises the Town of Lac La Biche, the First Nations of Beaver Lake and Heart Lake, the Metis Settlement of Kikino and Buffalo Lake and an umbrella area called Lakeland County, encompassing the communities of Plamondon, Rich Lake, Hylo, and Owl River.

The "*future frontiers*" awaiting you in Lac La Biche and District are not simply geographical. There are challenges and opportunities to be experienced in all sectors, from business and industry to tourism.

More fundamentally, it's a good place to raise a family: smaller communities nestled in an outdoor playground decorated with endless blue waters and skies, fresh air and tall trees. Don't think that the rural setting comes at the expense of typical urban services and conveniences, as the major centres of Lac La Biche and District are well equipped to serve your needs.

Also visit [Lac La Biche / Lakeland County Economic Development Partnership Website](#) for additional information.

Climate

Temperature - Daily Averages:

January -18.4 C (-1.1 F)

April 2.1 C (35.8 F)

July 17.0 C (62.6 F)

October 4.7 C (40.5 F)

Annual Precipitation:

Total 53.3 cm (20.2 in.)

Rain 36.5 cm (14.0 in.)

Snow 133.0 cm (52.4 in.)

Frost Free Days: 105

Hours of Sunshine/Year: 2240



Summer time on Lac La Biche Lake

Community Services

Due to the geographic advantages offered by the Lac La Biche Region, many government departments are located in the Town of Lac La Biche in order to service northeastern Alberta.

Our community services directory has a complete listing of services available in the following categories.

- Aboriginal
- Arts & Culture
- Children and Youth Services
- Clubs & Societies
- Community Agencies / Programs
- Educational / Education Support / Vocational/ Career
- Emergency Services
- Government Services Health / Health Related Support
- Other
- Religious / Spiritual
- Seniors, Sports & Recreation

Visit the [Lac La Biche / Lakeland County Economic Development Partnership](#) to download the FCSS Community Services Directory

Community Lifestyle

Lifestyle in our community reflects the values and interests of the local residents, which translates into a busy schedule of indoor and outdoor activities throughout all four seasons. While the events and pursuits vary from year to year, locals and guests to the region have a multitude of choices to satisfy their cultural, artistic, athletic and/or recreational needs. The volunteer spirit is alive with many of the events and activities organized by residents with a strong sense of community pride. Many people also choose to live in the region because of the proximity to lakes and wilderness, and the numerous recreational activities available to individuals and families.

The community is geared towards a rural family lifestyle with many after-school activities for children and teens. Adult recreational and leisure pursuits are not forgotten in the Lac La Biche Region, and the community boasts an abundance of choices available to residents and guests alike. Newcomers are impressed with our wide range of clubs, associations and facilities. Best of all, it is affordable and convenient to take advantage of everything that the region has to offer.

Religious Services

Several denominations are represented throughout the County. For a list of religious denominations [click here](#)

Community Organizations

Many community groups, sports clubs (indoor and outdoor), and service organizations operate in the County meeting the needs of all age groups. [Click here](#) for a list of Community Organizations

Recreational Facilities & Clubs

There are many recreation facilities and clubs, for any interest, throughout the county and surrounding area. [Click here](#) for a complete list of clubs and facilities

Campgrounds

The region boast over 150 lakes with over 1200 campsites. For more information on campgrounds in the region [click here](#)

Hotels & Motels

For information on hotels & motels [click here](#)

Bed & Breakfasts

For information on bed & breakfasts [click here](#)

Cabins & Resorts

For information on cabins & resorts [click here](#)

SPECIAL ANNUAL EVENTS/ATTRACTIONS

- Western Canadian Ice Race Championship - March
- Lac La Biche Rodeo - May
- Lac La Biche Mission Historic Site/Celebration - July 1st
- Plamondon Motor Sports Club Mud Bog - August
- Lac La Biche Pow-Wow Days & Fish Derby - August Long Weekend

Visit the [Community Events Calendar](#) for more information and all the regional events.

Things To Do

Please click below links for more information

[Back Country Canoe Circuit](#), [Parks & Lakes](#), [McArthur Park Hiking & Off road trails](#), [Fishing](#), [Water Activities](#) [Birdwatching](#), [Portage Pool](#), [Golfing](#)

Historical & Cultural Attractions

Please click below links for more information [Kak ki Yaw Cultural Camp](#) - Teaching the lifestyle and traditions of the region's Aboriginal community

[Alkareem Mosque - Lac La Biche Muslim Association](#) [Lac La Biche Mission](#) - A National Historic Site and a Provincial Historic Resource

[Plamondon Museum](#)



Some Housing Pictures from around Lac La Biche



Some of the many things to do and see in Lac La Biche

Economic Base

Lac La Biche has a primary trading area of about 12,000 people with a thriving business and service sector meeting most everyone's needs. The mainstays of Lac La Biche's regional economies are forestry, natural gas, agriculture, government services and education, small business and tourism. The economic base is quite diversified, with no single industry employing more than 15% of the workforce. There is a wealth of natural resources, with forestry and natural gas currently having the most significance, however, the abundance of lakes and forested area holds great potential for tourism.

Lac La Biche is situated at the southern end of the vast northern mixed-wood boreal forest, dominated by aspen and poplar, with blocks of spruce and pine.

Recent forestry developments have increased the size of this sector dramatically over the past several years. Over 30 companies operate within the forestry sector regionally. The biggest impact is the development of Alberta-Pacific's pulp mill, located 65 km away from the town. Lac La Biche is strategically located as the gateway to a significant portion of their woodlands area.

Lac La Biche serves as the hub of the region's oil and gas operations. Drilling, seismic, and pipeline construction activity is relatively consistent, contributing significantly to the local economy. While there is continuous development within this sector, the potential remains for substantial increases.

Local businesses supply and service the forestry and gas sectors, yet there remains numerous opportunities for investment.

The agricultural sector is another strong component of the region's economic base. The local sector is primarily involved in beef cattle production, with other livestock production, cereal grains, canola, grass seed, and other products rounding out this diverse industry. The sector is currently under serviced, so there are several opportunities for development.

Government Services, health care, and education play a key role in the local economy. Lac La Biche is northeastern Alberta's headquarters for many Provincial Government departments, and the home of Portage College, formerly the Alberta Vocational College. The inherent benefits of their presence has a very positive impact on the region.

Tourism is a burgeoning sector, holding great potential for the future. Lac La Biche consistently has over 175,000 tourists visit the region annually. While services are slowly being developed, many opportunities currently exist, and will continue to arise in the future.

Also visit the [Lac La Biche / Lakeland County Economic Development Partnership Website](#) for additional information



Economic Facts

ALBERTA PACIFIC FORESTRY INDUSTRIES INC. ECONOMIC IMPACT Alpac contributes approx. \$40,000,000 into the regional community

Visit the [Lac La Biche / Lakeland County Economic Development Partnership Website](#) for additional information

Education

The ten public schools that operate in the region's communities are under the jurisdiction of the Northern Lights School Division offering provincially certified instruction for grades K to 12. The schools have seen continuous growth of 3% per annum over the last five years which has resulted in substantial upgrading of facilities and expansion of curriculum to include language training in French, Arabic, Cree and Russian. Highly qualified educators, which are committed to providing a high standard of learning, staff the schools. Most schools have active parent advisory committees.

The community is proud of the provincial recognition given to several teachers and students, who have received awards for excellence in teaching and scholastic achievement. [For information and links on education click here](#)



Winter picture from January's Dogsled Race Event

Emergency Services

Call 911 for Police, Fire, and Ambulance emergencies.

Fire Protection:

Lac La Biche is served by a 25-member volunteer fire department [Tel: 780-623-4311]. In addition, several volunteer fire departments stationed in the villages and hamlets of the region provide good protection for the rural areas.

Police Services:

Lac La Biche is served by a 13-member [5 urban, 8 rural] local detachment of the Royal Canadian Mounted Police [RCMP] [Tel: 780-623-4380].

Ambulance Services:

Lac La Biche has an ambulance service with Advanced Life Support qualified attendants [Tel: 780-623-2142]. Air ambulance is available locally.

Also visit the [Lac La Biche / Lakeland County Economic Development Partnership Website](#) for additional information



Lac La Biche Fire Station

Health Care

Skilled and professional hospital health services are provided to the residents of the Lac La Biche region by Lac La Biche's William J. Cadzow Community Health Centre. Opened in 1985, the hospital's facilities include 30 active treatment beds. The hospital also serves as an outpatient satellite of Edmonton's W.W. Cross Cancer Institute. The town's two medical clinics [Associated Medical Clinic, Lindsay Medical Clinic] provide area residents with regular medical care.

The region is served by five doctors, three dentists, psychologists, two chiropractors, and an optometrist.

The Lac La Biche Health Unit's public Health Nurses and Health Inspectors service the region. The Unit also provides home care, dental health, speech-language pathology, early intervention, rehabilitation, and other services.

Also visit the [Lac La Biche / Lakeland County Economic Development Partnership Website](#) for additional information



William J. Cadzow Community Health Centre

Key Contacts for Business Development

Municipal

Town of Lac La Biche

Mayor : Thoman L. Lett

C.A.O. : David Sarsfield

Box 387

Lac La Biche, Alberta T0A 2C0

Phone: (780) 623-4323

Fax: (780) 623-3510

townllb@telusplanet.net

Regional

Lac La Biche Regional Community Development Corp.

Manager, Community Economic Development

Box 2188

Lac La Biche, AB

T0A 2C0

Tel: 780-623-2662

Fax: 780-623-2671

rcdc@telusplanet.net

Lac La Biche & District Chamber of Commerce

President: Hajar Haymour

Box 804

Lac La Biche, AB

T0A 2C0

780-623-2818

llbcfc@telusplanet.net

Provincial (Updated May 2006)

Alberta Economic Development

Box 412

Room 308, Provincial Building

5025 - 49 Avenue

St. Paul, Alberta

T0A 3A4

Tel: 780-645-6358

Fax: 780-645-6241

Garry Krause, Regional Manager

Maryann Robinson, Client Service Representative

Northern Alberta Development Council

Corinne Huberdeau, *Senior Development Officer*

Phone: (780) 623-6982

Website: OpportunityNorth.ca

Ray Danyluk

Member of the Legislative Assembly (MLA)

Lac La Biche - St. Paul Constituency

Constituency Office

4434-50th Avenue

St. Paul, AB

T0A 3A2

Phone: (780) 645-6999

Toll Free: 1-866-674-6999

Fax: (780) 645-5787

laclabiche.stpaul@assembly.ab.ca

Legislature Office
#503 Legislature Building
10800-97 Avenue
Edmonton, AB
T5K - 2B6
Phone: (780) 415-9578
Fax: (780) 422-6284

Federal (Updated May 2006)

Member of Parliament
Fort McMurray--Athabasca, Alberta
JEAN, Brian (Conservative)

Parliamentary Address
House of Commons
Ottawa, Ontario
K1A 0A6
Telephone: (613) 992-1154
Fax: (613) 992-4603
E-Mail: Jean.B@parl.gc.ca

Constituency Address
102 - 9912 Franklin Avenue
Fort McMurray, Alberta
T9H 2K4 Telephone: (780) 743-2201 1-877-532-6272
Fax: (780) 743-2287
TTY:

Financial Institutions:

- Canadian Imperial
- Bank of Commerce 623-4418 Bank of Nova Scotia 623-4445
- Alberta Treasury Branch 623-4446
- Lac La Biche Regional Community Development Corporation 623-2662

Real Estate:

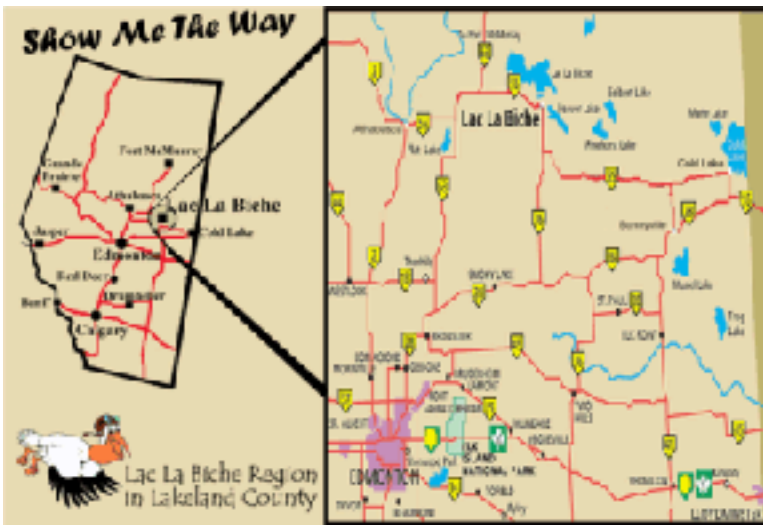
- [Lakeland Real Estate/ Century 21](#) 623-2100
- [Royal LePage](#) 623-2634
- [Re/Max - La Biche Realty](#) 623-2514

Location

The Town of [Lac La Biche](#) is located within the area of [Lakeland County](#), in northeast Alberta. It is 220 km northeast of Edmonton, 148 km west of Cold Lake, and 291 km south of Fort McMurray.

For maps of Lac La Biche and area [click here](#)





Post Secondary Education

Portage College

offers 7 different areas of study with over 30 different certificates and diplomas ranging from career programs, trades and technical, and academic upgrading programs.

Fields of Study:

- Business
- University Studies
- Human Services
- Health and Wellness
- Native Arts and Culture
- Trades and Technical
- Academic Upgrading



Portage College

Taxation

	Residential	Non-Residential	Mach. & Equip	Seniors
Municipal	8.7252	11.1901	11.1901	8.7252
Requisition	4.1453	6.9032	0.1129	0.000

Taxation Figures (2006) (Includes education requisitions)



Scenic View of Lac La Biche Lake

Transportation

Air Service:

Located approximately 2 kilometers West of [Lac La Biche](#) on Highway 55 there is an all weather airport with a 1765 m (5800 ft.) paved and lighted runway. Fixed wing and helicopter charter service, Alberta Forestry air tanker base, and air ambulance services are available.



Highways:

A network of primary highways and secondary roads provides access to and within the region. Many routes are used extensively by industrial and commercial traffic, as well as tourists, offering an excellent way to see the pristine beauty, historic site and numerous lakes of the area. In 2002 the addition of a truck by-pass to the south of town has added convenience and safety to the road network.

Truck- Hauling & Freight:

Numerous trucking firms service the region, with regular freight services offered by Lac La Biche Transport.

**Bus Services:**

Greyhound Bus Lines provides regularly scheduled inter-community service. Charter bus services are available.

Couriers and Taxis:

Loomis and Purolator Couriers, 2 taxi companies.

Car, truck, and van rental services are available.

Rail Service:

[Athabasca Northern](#) - rail transport between Fort McMurray and Boyle



Also visit the [Lac La Biche / Lakeland County Economic Development Partnership Website](#) for additional information

Utilities

Power

Epcor : visit the [Epcor website](#) for current prices, contracts and services

Natural Gas

Town of Lac La Biche Natural Gas System

Box 387

Lac La Biche, Alberta

Tel: 780-623-4323

townllb@telusplanet.net

Lac La Biche District Gas Co-op

Box 1050

Lac La Biche, AB

Tel: 780-623-4000

Water & Sewer

Town of Lac La Biche

Box 387

Lac La Biche, Alberta

Tel: 780-623-4566

townllb@telusplanet.net

The new Water Treatment Plant, H. A. Marchildon Water Treatment Plant, went on stream on August 4, 2004. The capacity of the plant is 1,455 US gallons/minute or 2,095,200 US gallons/day.

Sewage treatment is provided by detention ponds and aeration ponds.

Waste Management

Residential garbage is collected twice weekly, while commercial and industrial garbage is the individual's responsibility. Disposal is at a modified land fill.

Also visit the [Lac La Biche / Lakeland County Economic Development Partnership Website](#) for additional information



Aerial view of Lac La Biche

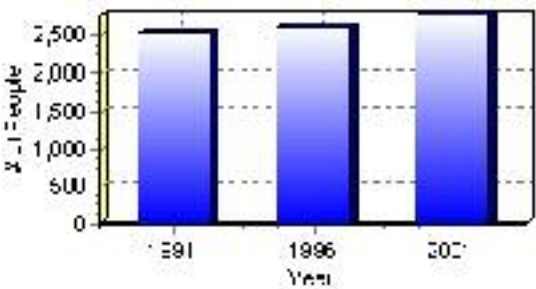
Population

Total Population

Population 2004*	2,776
Population 2003*	2,776
Population 2002*	2,776
Population 2001**	2,775
Population 2000*	2,611
Population 1996**	2,611
Population 1991**	2,549
Population % change 1991-1996	2.37%
Population % change 1996-2001	5.94%

* Source: Official Population List, Alberta Municipal Affairs
** Source: Statistics Canada 1991, 1996, & 2001 Census

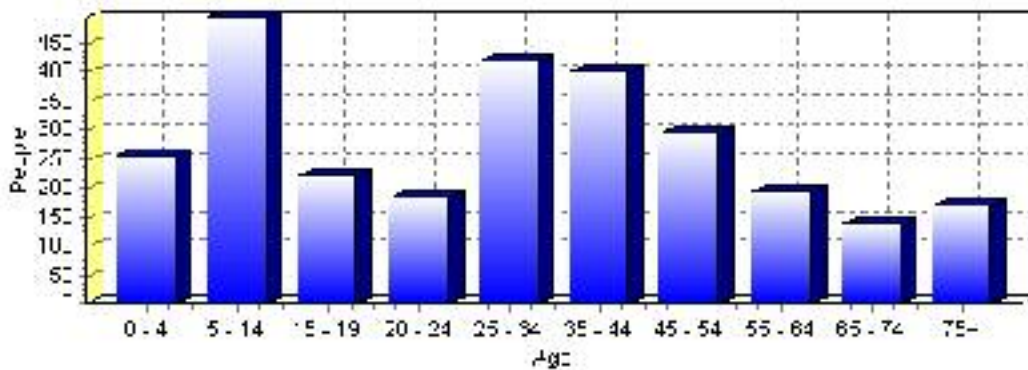
Total Population 1991-2001



Population by Age and Gender	1996 Male	1996 Female	1996 Total	2001 Male	2001 Female	2001 Total
Age 0 - 4	135	115	250	125	130	255
Age 5 - 14	250	210	460	265	230	495
Age 15 - 19	95	115	210	120	100	220
Age 20 - 24	115	115	230	80	105	185
Age 25 - 34	195	235	430	190	230	420
Age 35 - 44	165	175	340	200	200	400
Age 45 - 54	110	130	240	150	145	295
Age 55 - 64	85	75	160	95	100	195
Age 65 - 74	45	80	125	70	70	140
Age 75 and older	70	100	170	55	115	170
Total All Persons	1,270	1,340	2,610	1,335	1,440	2,775

Source: Statistics Canada 1996 & 2001 Census (numbers may not add up due to rounding)

Lac La Biche Population by Age Group (2001)

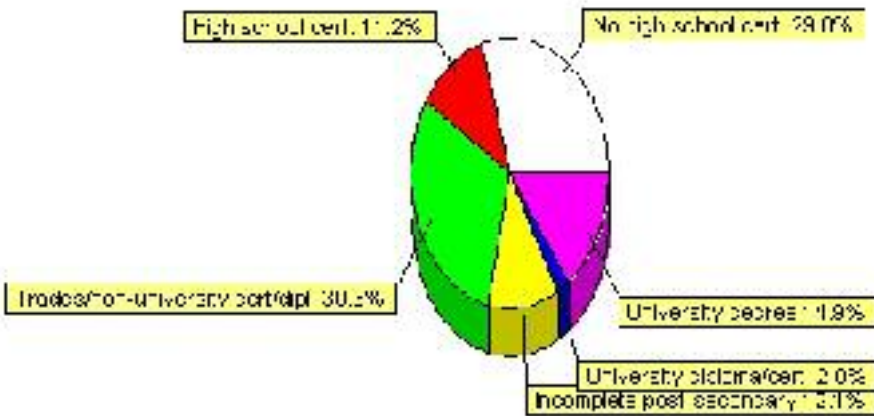


Education Statistics

Highest level of schooling for Population 20yrs and older	2001	%
People without high school certificates	530	29.78%
People with high school certificates	200	11.24%
People with trades or non-university certificate or diploma	540	30.34%
People with post-secondary education (not completed)	215	12.08%
People with university diploma/certificate	35	1.97%
People with university degree	265	14.89%
Total Population 20 years and older	1,780	100.00%

Source: Statistics Canada 2001 Census (numbers may not add up due to rounding)

Lac La Biche Highest Level of Schooling 2001



Population with Post Secondary Qualifications	1996	%	2001	%
Agriculture and biological sciences	30	3.90%	25	2.99%
Commerce, management and business administration	135	17.53%	135	16.17%
Educational, recreational and counseling services	140	18.18%	155	18.56%
Engineering and applied science tech. and trades	180	23.38%	235	28.14%
Engineering and applied sciences	25	3.25%	15	1.80%
Fine and applied arts	20	2.60%	25	2.99%
Health professionals, science and technologies	105	13.64%	105	12.57%
Humanities and related fields	25	3.25%	25	2.99%
Mathematics and physical sciences	10	1.30%	0	0.00%
Social sciences and related fields	105	13.64%	110	13.17%
Other and/or no specialization	0	0.00%	0	0.00%
Total people with post secondary qualifications	770	100.00%	835	100.00%
Females with post-secondary qualifications	355	46.10%	440	52.69%
Males with post-secondary qualifications	415	53.90%	395	47.31%

Source: Statistics Canada 1996 & 2001 Census (numbers may not add up due to rounding)

Labour Force

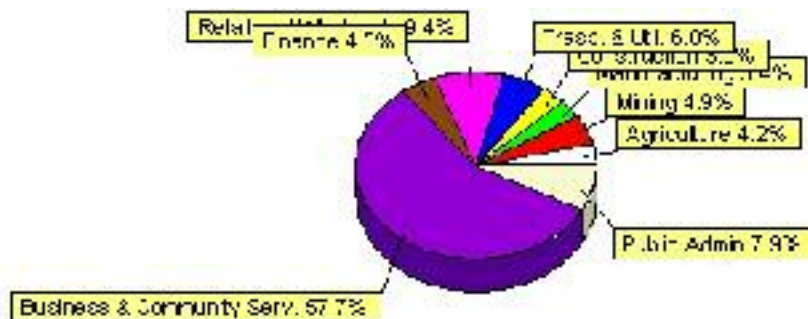
Labour force by activity	1996	2001
In the labour force, both sexes	1,190	1,330
Not in the labour force, both sexes	615	605
Total population 15 and over	1,800	1,935
Employed, both sexes	1,035	1,235
Unemployed, both sexes	150	100
Participation rate, both sexes	66.00%	69.00%
Unemployment rate, both sexes	13.00%	8.00%

Source: Statistics Canada 1996 & 2001 Census (numbers may not add up due to rounding)

Labour Force by Industry Division	1996	% of total	2001	% of total
Agriculture	20	1.75%	55	4.15%
Mining	45	3.95%	65	4.91%
Manufacturing	65	5.70%	45	3.40%
Construction	70	6.14%	40	3.02%
Transportation. & Utilities	65	5.70%	80	6.04%
Retail and Wholesale	210	18.42%	125	9.43%
Finance	40	3.51%	60	4.53%
Business & Community Services	540	47.37%	765	57.74%
Public Administration	55	4.82%	105	7.92%
Total All Industries	1,140	100.00%	1,325	100.00%

Source: Statistics Canada 1996 & 2001 Census (numbers may not add up due to rounding)

Lac La Biche Labour Force By Industry - 2001



Labour Force by Major Occupational Groups	1996	%	2001	%
Management occupations	90	7.89%	155	11.70%
Business, Finances and administrative occupations	130	11.40%	195	14.72%
Natural and applied sciences and related occupations	40	3.51%	60	4.53%
Health occupations	70	6.14%	65	4.91%
Occupations in social science; education; government and religion	165	14.47%	240	18.11%
Occupations in art; culture; recreation and sport	15	1.32%	25	1.89%

Sales and service occupations	365	32.02%	280	21.13%
Trades; transport; equipment operators and related occupations	160	14.04%	205	15.47%
Occupations unique to primary industry	45	3.95%	85	6.42%
Occupations unique to processing; manufacturing and utilities	55	4.82%	25	1.89%
Occupations not elsewhere classified	45	3.95%	10	0.75%
Total - All Occupations (major groups)	1,140	100.00%	1,325	100.00%
Females - All Occupations	515	45.18%	620	46.79%
Males - All Occupations	625	54.82%	705	53.21%

Source: Statistics Canada 1996 & 2001 Census (numbers may not add up due to rounding)

Income

Family Income (Number of Families)	1996	%	2001	%
less than \$19,999	70	14.89%	130	31.71%
\$20,000 - \$39,999	120	25.53%	130	31.71%
\$40,000 - \$59,999	115	24.47%	105	25.61%
\$60,000 and over	165	35.11%	185	45.12%
Total number of families	470	100.00%	550	134.15%
Average family income	\$49,337		\$56,297	
Median family income	\$49,820		\$56,937	

Source: Statistics Canada 1996 & 2001 Census (numbers may not add up due to rounding)

Household Income (Number of Households)	1996	%	2001	%
less than \$19,999	270	30.34%	210	21.21%
\$20,000 - \$39,999	220	24.72%	265	26.77%
\$40,000 - \$59,999	175	19.66%	155	15.66%
\$60,000 and over	65	7.30%	355	35.86%
Total number of households	890	100.00%	990	100.00%
Average household income	\$41,503		\$50,414	
Median household income	\$32,994		\$43,145	

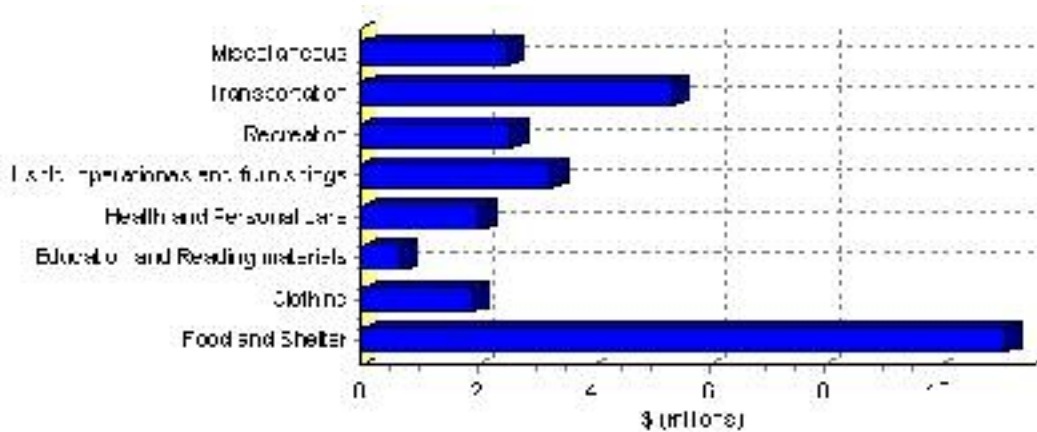
Source: Statistics Canada 1996 & 2001 Census (numbers may not add up due to rounding)

Family Expenditure

Expenditure Category	1992	% of total	1996	% of total
Food and Shelter	\$8,745,660	37.50%	\$11,130,808	37.59%
Clothing	\$1,566,970	6.72%	\$1,952,017	6.59%
Education and Reading materials	\$460,825	1.98%	\$682,793	2.31%
Health and Personal care	\$1,475,635	6.33%	\$2,046,425	6.91%
Hshld. operations and furnishings	\$2,548,360	10.93%	\$3,266,928	11.03%
Recreation	\$1,798,810	7.71%	\$2,604,825	8.80%
Transportation	\$4,818,685	20.66%	\$5,402,583	18.25%
Miscellaneous	\$1,898,270	8.14%	\$2,522,289	8.52%
Total Current Consumption	\$23,321,790	100.00%	\$29,608,668	100.00%
Total # of Households	840		891	
Average Consumption per Household	\$27,764		\$33,231	

Source: Statistics Canada Family Expenditure Survey 1992 & 1996 (numbers may not add up due to rounding).

Lac La Biche Family Expenditures (1996)

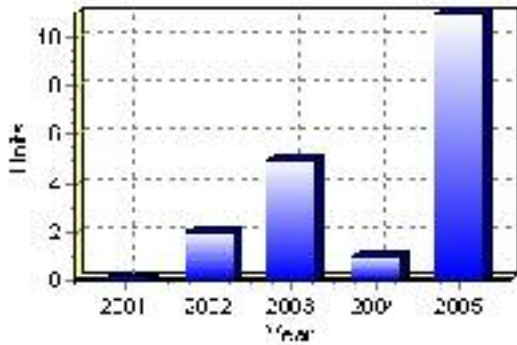


Building Permits

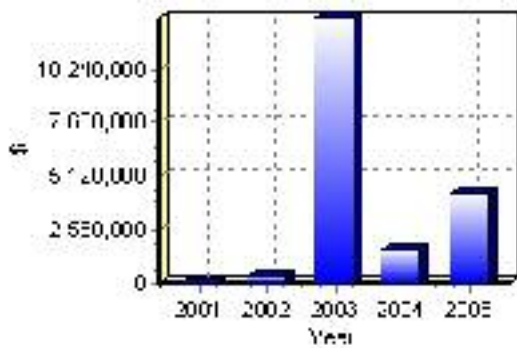
Total Building Permit Values	2001	2002	2003	2004	2005
Building Permits Value, Commercial	\$0	\$60,000	\$1,634,000	\$950,000	\$2,336,000
Building Permits Value, Industrial	\$0	\$0	\$8,355,000	\$0	\$0
Building Permits Value, Institutional	\$0	\$0	\$2,150,000	\$573,000	\$249,000
Building Permits Value, Residential	\$0	\$367,000	\$538,000	\$130,000	\$1,737,000
Building Permits Value, Total	\$0	\$427,000	\$12,677,000	\$1,653,000	\$4,322,000
Total Housing Starts	0	2	5	1	11

Source: Statistics Canada 2000-2004 Building Permits (numbers may not add up due to rounding)

Total Housing Starts



Value of Building Permits



Dwellings

Occupied Private Dwellings by Type	1996	% of total	2001	% of total
Apartments	220	24.72%	245	24.87%
Detached Duplexes	10	1.12%	15	1.52%
Movable Dwellings	75	8.43%	60	6.09%
Other single attached house	0	0.00%	5	0.51%
Row and semi-detached house	110	12.36%	90	9.14%
Single-detached house	470	52.81%	570	57.87%
Total number of occupied private dwellings	890	100.00%	985	100.00%
Private dwellings, owned	490	55.06%	530	53.81%
Private Dwellings, rented	405	45.51%	455	46.19%

Source: Statistics Canada 1996 & 2001 Census (numbers may not add up due to rounding)

Private Dwellings by Period of Construction	# of Dwellings	% of total
Period of construction, before 1946	45	4.57%
Period of construction, 1946 - 1960	50	5.08%
Period of construction, 1961 - 1970	170	17.26%
Period of construction, 1971 - 1980	275	27.92%
Period of construction, 1981 - 1990	230	23.35%
Period of construction, 1991 - 2001	215	21.83%
Total number of private dwellings constructed	985	100.00%

Source: Statistics Canada 2001 Census (numbers may not add up due to rounding)

Disclaimer: Information in this profile has been provided from a variety of external sources. Although every effort has been made to ensure the accuracy, currency and reliability of the content and data, AlbertaFirst.com Ltd. accepts no responsibility in this regard.

© AlbertaFirst.com Ltd., 2006.