

# Standard

## Welcome

### WELCOME TO STANDARD

An attractive community of Danish origins, Standard is located in the heart of the County of Wheatland surrounded by fertile farmlands and numerous oil and gas rigs. The Chimney Hills can be seen rising in the background.

We are a progressive farming community and have active oil and gas companies. With Calgary and Drumheller located only 50 miles away, residents can enjoy a quiet country life, but still be able to access city benefits.

Our friendly community of 389 invites you to consider a move to our growing village and to explore the professional and commercial business opportunities.



## Area Overview

### HISTORY



In 1909, a delegation of Danish men came from Iowa to the Chimney Hills district to look for farmland on the 21, 000 acres the CPR had set aside for this purpose.

In 1910 the first families moved into what was then called the "Dana" area, and the 1910 CPR map shows the village's name as "Danaview". When CPR officials discovered they had a town bearing that name northeast of Saskatoon, they would not permit two towns with the same name on their line. Hence the name Standard from the Royal Danish Standard.

With the arrival of trains in 1911, Standard became a thriving service centre for the agricultural industry surrounding it and today provides services for crews of the numerous oil and gas facilities dotting the landscape.

### ALBERTA, THE BEST PLACE TO WORK, LIVE AND DO BUSINESS

The province of Alberta is a leader in the Canadian economy. Alberta has had the fastest growing economy in Canada over the past two decades, with real GDP growth averaging 3.7 percent per year. Highlighting Alberta's success in the past year is:

- Over \$73.2 billion in international exports of goods and services (2004)
- Manufacturing shipments of \$52.6 billion (2004)
- Creation of 40,000 new jobs in 2004 and 433,900 between 1994 and 2004
- Over \$103 billion in major capital projects are proposed, announced, under construction or recently completed (2004)

Source: [Alberta Economic Development](#)

### Alberta's Positive Business Climate

- The lowest overall taxes in Canada
- No provincial sales tax



- No general capital or payroll taxes prevalent in other provinces and U.S. states
- A highly entrepreneurial and competitive business community
- A fiscally responsible government that has eliminated its provincial debt, demonstrating to investors the business-like attitude of the government
- A highly skilled, educated and motivated workforce that is the most productive in Canada

Source: [Alberta Economic Development](#)

## Climate

### AVERAGE TEMPERATURE

#### January

Maximum temperature = -6.3 Celsius

Minimum temperature = -16.7 Celsius

#### July

Maximum temperature = 23.5 Celsius

Minimum temperature = 9.9 Celsius

Annual precipitation = 431.9 mm

Source: [Environment Canada](#).

## Community Services

### BUSINESS SUPPORT SERVICES

#### Wild Rose Economic Development Corporation

Box 2159

2nd Floor, 203 3rd Avenue Hilton Plaza Strathmore, Alberta T1P 1K2

1-888-881-9675

(403) 934-6488 phone (403) 934-6492 fax

Email: [wildrose@wildrose.ab.ca](mailto:wildrose@wildrose.ab.ca)

Website: [www.gowildrose.com](http://www.gowildrose.com)

Services include: career center for employers and employees, small business assistance, financing and referral.

[Alberta Human Resources and Employment](#) is a provincial department that focuses on people skills and the workplace. They provide a broad range of service to both employees and employers.

[Human Resources & Skills Development Canada](#) is a federal department that provides a broad range of services for employees and employers.

#### Standard Village Office

120 Elsinore Avenue Box 249 Standard, AB T0J 3G0

Tel: 403-644-3968 Fax: 403-644-2284

#### Recycling Depot

Christian Avenue West

Tel: 403-644-2404

## Standard Municipal Library

Main Street

Tel: 403-644-3995

# Community Lifestyle

## PEACE OF MIND

Standard is part of the Wild Rose Region. Many residents and business owners choose to locate in the Region because of the safety and security of small town living. As indicated by the below table, crime statistics are substantially lower in the region than typical of a larger metropolitan center like the City of Calgary.

CRIME RATE COMPARISON		
	Wild Rose Region*	Calgary*
Homicide	0	0.71
Assault	7	16
Burglary	0	2
Break and Enter	6	17
Theft of a Vehicle	5	11
Theft from a Vehicle	8	19
Mischief Offences	10	21

\* Per 1,000 residents

Sources: RCMP Crime Statistics 2002, City of Calgary Police Service 2002

The region offers the most affordable local utilities, based on comparison with Calgary and area utilities. In the Wild Rose Region, local utilities (water, sewer and garbage) are approximately 26% lower than the average of communities in and around Calgary (Benchmarks Nichols Applied Management, 2000).

## RECREATION

### Campgrounds

Standard has a fully serviced campground with 10 sites, 4 power hook ups and 6 without power.

The facility includes a campsite, day use/picnic area, free firewood, flush toilets, picnic shelter, sewage dump, site stoves, watertap and showers.

For additional details click here: [Camp Ground Information](#)

### Golf Courses



Akokiniskway Golf Course is located just 23 kilometers from Standard.

[Rosebud Golf Course](#) is a 9 hole golf course in the challenging Rosebud River Valley. 403-677-2250

**Public Recreation**

- A two sheet curling rink
- Hockey and skating arena
- Sand volleyball court
- 2 tennis courts
- 2 baseball fields
- soccer field

**Service Clubs**

- Lionettes Club
- Lions Club
- Royal Canadian Legion #16

**Annual Community Events**

- Standard Sports Day
- Canada Day Celebration
- Standard Lions Auction
- Partners In The Hall
- Annual Oyster and Ham Library Fundraiser Dinner

**Religious Institutions**

- Nazareth Lutheran Church

**Economic Base**

HAY AND FIELD CROPS BY ACRES	
Alfalfa and Alfalfa mixtures	70,621
Barley	375,365
Cane	133,327
Dry Field Peas	48,559
Mixed Grain	11,138
Oats	11,638
Tame Hay and Fodder	31,603
Wheat	543,230

LIVESTOCK AND POULTRY	
Cattle	30,051
Hogs	254,259
Sheep/Lambs	10,671
Chicken (by kilos)	9,711,333
(by lbs.)	21,411,279
Turkey (by kilos)	1,021,166
(by lbs.)	2,227,193

Source: Agricultural Census 2001

**ECONOMIC STRENGTHS**

**Agriculture**

The main economic base of the Standard area is agriculture and agricultural services. Standard is surrounded by fertile farmland, clean air and water make this community an attractive place to live and operate a business.

In addition to the grain industry, there is a thriving local poultry operation and a large greenhouse business nearby. A large employer in the district is the Husky Oil Plant.

Agrium has a liquid fertilizer manufacturing plant in the village. The oil & gas industry has encouraged several companies such as Gene's Oilfield Services, Cal's Construction, Andrus Transport to set up business here in the village to service this sector of the economy.



As well as local grocery and dry goods stores, Standard also boasts a hotel, coffee shop, treasury branch, accounting firm, service station, confectionary and hair dressers as well as several other commercial enterprises.

Agriculture, Oil & Gas, Trucking, Fertilizer Plant, Co-op Grocery/Hardware

## EMPLOYERS

- Husky Oil Plant  
Box 219, Standard Alberta, T0J 3G0  
Conventional crude oil and natural gas industry  
Web site: [www.huskyenergy.ca](http://www.huskyenergy.ca)
- Agrium Liquid Fertilizers  
Box 40, Standard Alberta, T0J 3G0  
Phone: 644-3883 Fax: 644-3799  
Manufactures and markets liquid fertilizer for grain farming  
Web site: [www.agrium.com](http://www.agrium.com)
- Gene's Oilfield Services  
Phone: 644-2286  
Oil and gas field servicing
- Big Wheels Services  
Phone: 644-2339  
Tires and repairs
- Cal's Construction Ltd.  
Box 339, Standard Alberta, T0J 3G0  
Phone: 644-3741 Fax: 644-2348  
Oil and gas field servicing

## Economic Facts



### DEMOGRAPHICS

The population of Standard is 389.

- Median age group is 35 – 54
- Males outnumber females in age groups 5 – 14, 25 – 34 and 65 – 74
- Females outnumber males in age groups 20 – 24, and 55 – 64
- 87.2% of Standard's population is under 65 years old
- 60.3% is under 45 years old
- 33.3% is under 25 years old
- 71.9% of the population (over 20 years of age) has a high school diploma or higher education

- The projected population for 2006 is 402

Source: 2001 Statistics Canada Census

## OCCUPANCY/SUPPLY

Standard presently has 18.37 acres of industrial land available. This is undeveloped land that sells for \$4000 an acre. Purchaser is responsible for all development costs.

Industrial and residential land available.

## WORKERS COMPENSATION

Average cost per \$100 payroll in Manufacturing: \$3-\$4

Average cost per \$100 payroll in Office Work: \$.40

Maximum weekly benefit \$1,176.92

For additional details on the program see: [Workers Compensation Board](#)

## EMPLOYMENT INSURANCE

55% of your average insurable earnings to a maximum of \$413 per week.

For additional information on the program see: [Employment Insurance Information for Employers](#)

## RESEARCH BASE

Being a close neighbor of the City of Calgary, companies located in Standard have access to a broad range of research facilities located in an around the City. For additional information on the following research facilities, simply click on the name to access the link.

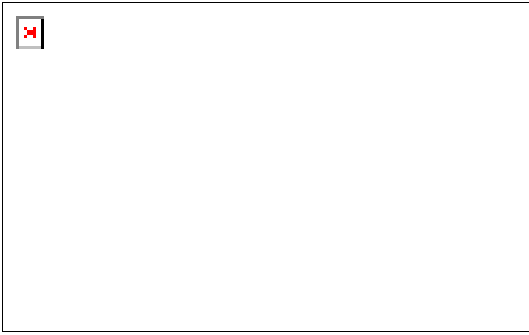
- [Alberta Research Council](#)
- [Calgary Technologies Inc.](#)
- [Edmonton Economic Development Corporation](#)
- [Food Processing Development Centre](#)
- [TRLabs](#)
- [WurcNet](#)

## FURTHER IN-DEPTH INFORMAITON

- [Municipal Profiles developed by Alberta's Ministry of Municipal Affairs](#)
- [Alberta - A Wealth of Opportunity developed by Alberta Economic Development](#)
- [Alberta Economic Highlights developed by Alberta Economic Development](#)
- [Alberta Economic Outlook developed by Alberta Economic Development](#)
- [Alberta Export and Trade developed by Alberta Economic Development](#)
- [Tourism Reports developed by Alberta Economic Development](#)
- [Alberta Finance Statistics](#) also contains much information which may be useful.

## Education

**Standard School** is part of the [Golden Hills School Division #75](#).



Standard School offers programs for all grades ECS through Grade 12. The school has maintained a focus on academic achievement and has achieved a fine academic record for many years. This focus is continuing with the commitment of the teachers, students, parents, and the community.

Standard School  
Box 69  
Standard, AB T0J 3G0  
Tel: 403-644-3791 Fax: 403-644-3813

Email: [standard@goldenhills-schools.com](mailto:standard@goldenhills-schools.com)  
Website: <http://www.goldenhills-schools.com/standardinfo.htm>

### **Standard Playschool Association**

Sherri Larsen - 644-2272 Parent supervisors, as well as one teacher. Playschool encourages children to get along with others and provide learning experiences.

In 2002/2003 Alberta spent \$8,800 to education a student and the student to teacher ratio was just under 18.

Source: Culture, Tourism and Centre for Education Statistics, Summary Public School Indicators for the Provinces and Territories, 1996-97 – 2002-03 (Statistics Canada)

## **Emergency Services**

Standard is within the Municipal District of Wheatland County. Regional cooperation has played an important role in the development of emergency response systems in the area. In 1987 the Wheatland and District Emergency Medical Services Association was created by a number of municipalities in the region. The Association provides emergency services throughout the County area. To further enhance emergency response in the region, the County signed a Mutual Aid Agreement for Disaster Services with each of the towns and villages within the County boundaries in 1990.

All emergencies can be reported by using 911.

### **FIRE SERVICES**

Standard has a local volunteer fire department, Standard Rural Fire Association. Contact Fire Chief Andy Schulthess - Phone: 644-3987

### **POLICE SERVICES**

Standard is serviced by the RCMP (Royal Canadian Mounted Police) detachment located in the community of Strathmore. ( 38 km between communities)

500 Westlake Rd Strathmore, AB T1P 1M7

Tel: (403) 934-3535

## **AMBULANCE SERVICES**

Standard receives ambulance service from the community of Strathmore, which has a paramedic ambulance service that is located adjacent to the hospital [Tel: 403-934-3639]. Along with the Ambulance service the hospital also uses the STARS Helicopter. When an ambulance is called, first responders are called and will stay until the ambulance arrives.

# Health Care

## **STRATHMORE HOSPITAL**



Strathmore is serviced by the [Calgary Regional Health Authority](#)

The Strathmore & District Health Care Centre is part of a regional health care system, and has 25 active-care beds and 23 extended-care beds.

Telephone:(403) 934 0126

Facsimile: (403) 934 0173

200 Brent Blvd., Strathmore, Alberta T1P 1J9

Signage directing you to the Diagnostic Imaging Department is located on the main floor, inside the main entrance of the Strathmore Health Unit.

The following DI services are provided at the Strathmore Health Unit:

- General Radiography
- Fluoroscopy
- Ultrasound
- ECG

### **Professional Services Include:**

- Physicians
- Radiologists
- Gerontologist
- Recreation Therapist





- Respiratory Therapist
- Orthotics Consultant
- Orthopaedic Consultant
- Laboratory Consultant
- Pharmacists
- Dietician
- Dentists
- Chiropractors

Health unit services are also provided out of the hospital. Strathmore also has 2 medical clinics, 1 nursing home and 2 seniors housings.

## Key Contacts for Business Development

### KEY BUSINESS CONTACTS

Leah Jensen  
 Chief Administrative Officer  
**Village of Standard**  
 Box 249 Standard, AB T0J 3G0  
 (403) 644-3968 Telephone  
 (403) 644-2284 Fax  
 Email: [cao@standardab.ca](mailto:cao@standardab.ca)

**Wild Rose Economic Development Corporation**  
 Box 2159 2nd Floor, 203 3rd Avenue  
 Hilton Plaza Strathmore, AB T1P 1K2  
 1-888-881-9675  
 (403) 934-6488 Telephone  
 (403) 934-6492 Fax  
 Email: [wildrose@wildrose.ab.ca](mailto:wildrose@wildrose.ab.ca)  
 Website: [www.gowildrose.com](http://www.gowildrose.com)

### PROVINCIAL GOVERNMENT CONTACT

Walter Valentini  
 Regional Manager **Alberta Economic Development**  
 #300, 639 - 5th Avenue, SW Calgary, Alberta T2P 0M9  
 Tel: 403-297-8920  
 Fax: 403-297-6168  
 E-Mail: [walter.valentini@gov.ab.ca](mailto:walter.valentini@gov.ab.ca)  
 E-Mail: [dianne.fitzsimmons@gov.ab.ca](mailto:dianne.fitzsimmons@gov.ab.ca)  
 Website: [www.edt.gov.ab.ca/aed/](http://www.edt.gov.ab.ca/aed/)

**MLA Strathmore – Brooks**  
 Lyle Oberg Constituency Office  
 PO Box 873  
 403 – 2nd Ave. West Brooks, AB T1R 1B7  
 (403) 362-6969 Telephone  
 (403) 362-5923 Fax

Email: [strathmore.brooks@assembly.ab.ca](mailto:strathmore.brooks@assembly.ab.ca)

**MP Crowfoot**

Kevin Sorenson

4945 - 50th Street

Camrose, Alberta T4V 1P9

Telephone: (780) 608-4600 1-800-665-4358

Fax: (780) 608-4603

E-Mail: [Sorenson.K@parl.gc.ca](mailto:Sorenson.K@parl.gc.ca)

## Location

Standard is within the Municipal District of Wheatland County.

HWY #840 north/south, HWY #561 to HWY #1,

### LONGITUDE & LATITUDE

**Longitude** 112 degrees 58'

**Latitude** 51 degrees 7'



MAP OF ALBERTA.



MAP OF STANDARD'S LOCATION

### PROXIMITY TO OTHER LOCATIONS

Driving Distance from Standard	km	miles	Time Required
Calgary (city centre)	89	55	1 hour
Calgary International Airport	91	56	1 hour, 3 minutes
Edmonton, Alberta	395	246	4 hours, 1 minute
Vancouver, British Columbia	1056	656	12 hours, 14 minutes
Toronto, Ontario	3348	2081	34 hours, 37 minutes
United States Border (Coutts, Alberta crossing)	318	198	3 hours, 42 minutes

It is important to note that time required is calculated based on 'ideal' traffic and weather conditions.

**\*\*Distance is measured from city centre to city centre\*\***

## Post Secondary Education

### Building Futures

The village of Standard is an hour drive from world-class education facilities. Standard's proximity to Calgary allows students the opportunity to attend post-secondary institutions with minimal travel. If you wish to stay within Standard then Bow Valley



College, University of Athabasca and other universities offer many correspondence courses. For information on Educational Opportunities in close proximity to Strathmore visit the school's corresponding website:

<b>Educational Facility</b>	<b>Location</b>	<b>Telephone</b>	<b>Web site</b>
University of Calgary	Calgary, AB	403-220-5110	<a href="http://www.ucalgary.ca">www.ucalgary.ca</a>
University of Lethbridge	Lethbridge, AB	403-320-5700	<a href="http://www.uleth.ca">www.uleth.ca</a>
S.A.I.T.	Calgary, AB	403-284-7248	<a href="http://www.sait.ab.ca">www.sait.ab.ca</a>
Mount Royal College	Calgary, AB	403-240-6111	<a href="http://www.mtroyal.ab.ca">www.mtroyal.ab.ca</a>
AB College of Art & Design	Calgary, AB	403-284-7600	<a href="http://www.acad.ab.ca">www.acad.ab.ca</a>
Devry Canada	Calgary, AB	403-235-3450	<a href="http://www.devry.ca">www.devry.ca</a>
Olds Agricultural College	Olds, AB	1-800-661-6537	<a href="http://www.oldscollege.ab.ca/">www.oldscollege.ab.ca/</a>
Red Deer College	Red Deer, AB	403- 342-3300	<a href="http://www.rdc.ab.ca/">www.rdc.ab.ca/</a>

**Other Educational Opportunities** within close proximity are:

[Prairie Bible Institute](#) offers a wide range of programs, including ministry, aviation, drama, wilderness leadership and music, to students from over 20 countries around the world. Students can earn a one-year certificate or a four-year degree.

[Covenant Bible College](#) is an eight-month program of Christian discipleship. The Strathmore campus is one of three campuses, with the other two located in Colorado and Ecuador.

[Rosebud School](#) of the Arts offers a unique blend of practical and theoretical training in the performing arts. In addition to the arts program, Rosebud provides apprenticeship programs in the hospitality industry.

## Taxation

	<u>Residential/Farmland</u>	<u>Non-Residential</u>
<b>2005</b>		
Municipal Tax Rate	13.3000	13.9000
Education - Alberta School Foundation Fund Tax Rate	4.9000	7.4000
Seniors Lodge Accommodation Tax Rate	.1000	.1000

## Transportation

**AIR SERVICES** The nearest commercial and air freight services are at **Calgary International Airport**



- 91 km drive from Standard.
- For a listing of non-stop passenger destinations visit [Passenger Non-stop Destinations](#)
- Provides a single hub location that specializes in a wide range of services including receiving, transferring, storing, and distributing air, rail and highway cargo both domestically and internationally
- The airport offers 360 degree market penetration for International cargo & passenger carriers. 50 million people can be reached within a days travel
- Calgary is the 'ONLY' Canadian airport strategically located on the cross roads of the

Trans Canada (East-West) and the CanaMex Highways (North-South) [Cargo Information](#)

### **RAIL SERVICE**

CPR Branch & Spurline

### **HIGHWAYS**

Standard is within the Municipal District of Wheatland County. HWY #840 north/south, HWY #561 to HWY #1, For manufacturers and producers who need assistance to determine the most cost-effective and efficient transportation method, AlbertaPORT provides a "virtual" gateway to assist with transportation logistics at [Alberta-Canada](#)

### **BUS SERVICE**

Regularly scheduled bus service is provided to Standard by

[Greyhound Canada](#)  1-800-661-8747.

### **POSTAL & COURIERS**

Canada Post, Purolator, UPS and FedEx all provide delivery services for Standard . Canada Post fills a vital need in the region providing cost-effective and timely mail delivery. In its mission to provide innovative physical and electronic delivery solutions creating value for its customers, Canada Post works with its business customers to ensure their mail communication needs are achieved.

In 2001, Canada Post received an on-time, combined service performance score of 96.4% on properly prepared letter mail.

For more information on service in Standard contact [Canada Post](#),[Purolator](#),[UPS](#) & [FedEx](#).



## **Utilities**

**ELECTRICITY** and **NATURAL GAS** are deregulated in Alberta.

The Alberta government provides a Web site to provide information to assist consumers to choose the appropriate provider for their residence or business. To learn more about electrical or natural gas providers visit [Customer Choice](#)

Regulated Rate Providers for Community of Standard are:

### **ELECTRICAL POWER**

- Epcor



- FortisAlberta

## NATURAL GAS

- **Direct Energy Regulated Services**
- **Atco**

## COMMUNICATIONS

### Telephone:

- **Telus**

### Internet Services:

- **Telus**

### Local/Regional Newspapers:

- **Strathmore Standard**
- **The Calgary Herald**
- **The Calgary Sun**



## WATER, WASTE & SEWER

\$4.00 per thousand for water used exceeding the minimum 7,000 gallons. (Residential users only)

\$7.00 per thousand gallons for water used exceeding the minimum 7,000 gallons (Category 1 and 2 industrial/commercial users)

\$8.00 per thousand gallons for water used exceeding the minimum 7,000 gallons (Category 3 industrial/commercial users)

Tank water - \$44.00 per thousand gallons

Reconnect fee is one water billing (minimum of \$52.50)

Standard has a new Water Treatment Plant which produces 756 cubic meters of water a day.



Alberta's commitment to water resources is three-fold: a safe, secure drinking water supply, healthy aquatic ecosystems, and reliable, quality water supplies for a sustainable economy.

[Alberta Environment](#) has developed water programs that include studying, monitoring and testing of water sources. They have established guidelines to ensure quality standards for the many uses of water, and programs to protect ecosystems and enforce regulations.

Alberta has the most stringent drinking water program in the country and was one of the first provinces to fully adopt the [Canadian Guidelines for Drinking Water Quality](#) as a minimum standard. Alberta Environment strives for continuous improvement in its program and works closely with [Alberta Health and Wellness](#) to ensure Albertans continue to enjoy high-quality drinking water.

Utility bills are sent out every two months (January, March, May, July, September, November)

The water/sewer/garbage rates are:

**Metered Users    Unmetered Users**

7,000 gallons of water \$52.50 \$68.75

Sewer \$25.00 \$25.00

Garbage \$18.50 \$13.70

H2O Plant Debenture \$25.00 \$25.00

Total Minimum Charge \$121.00 \$137.25

**GARBAGE**

Garbage is picked up every Wednesday and must be bagged. Standard has a waste transfer site which is a manned site.

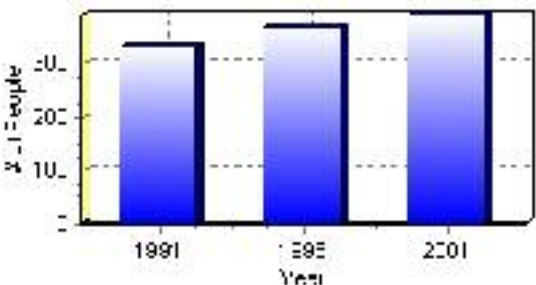
# Population

## Total Population

Population 2004*	389
Population 2003*	389
Population 2002*	389
Population 2001**	390
Population 2000*	366
Population 1996**	366
Population 1991**	329
Population % change 1991-1996	10.11%
Population % change 1996-2001	5.91%

\* Source: Official Population List, Alberta Municipal Affairs  
\*\* Source: Statistics Canada 1991, 1996, & 2001 Census

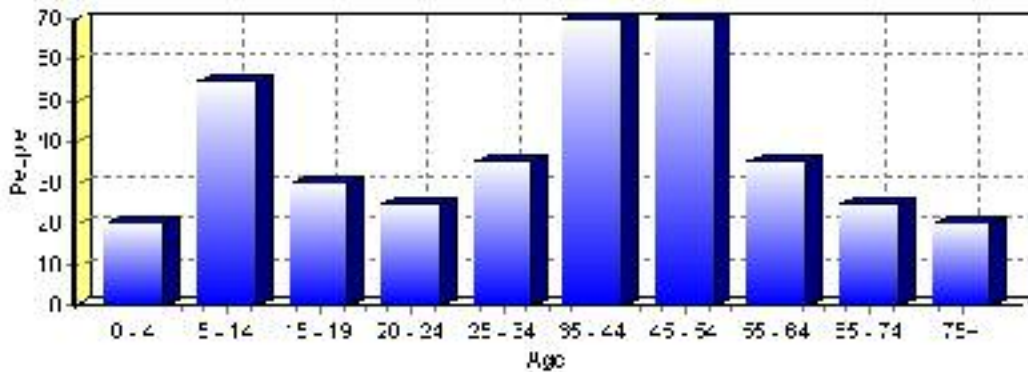
## Total Population 1991-2001



Population by Age and Gender	1996 Male	1996 Female	1996 Total	2001 Male	2001 Female	2001 Total
Age 0 - 4	10	10	20	10	10	20
Age 5 - 14	25	25	50	30	25	55
Age 15 - 19	15	15	30	15	15	30
Age 20 - 24	10	5	15	10	15	25
Age 25 - 34	25	25	50	20	15	35
Age 35 - 44	35	30	65	35	35	70
Age 45 - 54	20	20	40	35	35	70
Age 55 - 64	15	20	35	15	20	35
Age 65 - 74	15	15	30	15	10	25
Age 75 and older	20	15	35	10	10	20
Total All Persons	190	180	370	205	185	390

Source: Statistics Canada 1996 & 2001 Census (numbers may not add up due to rounding)

### Standard Population by Age Group (2001)



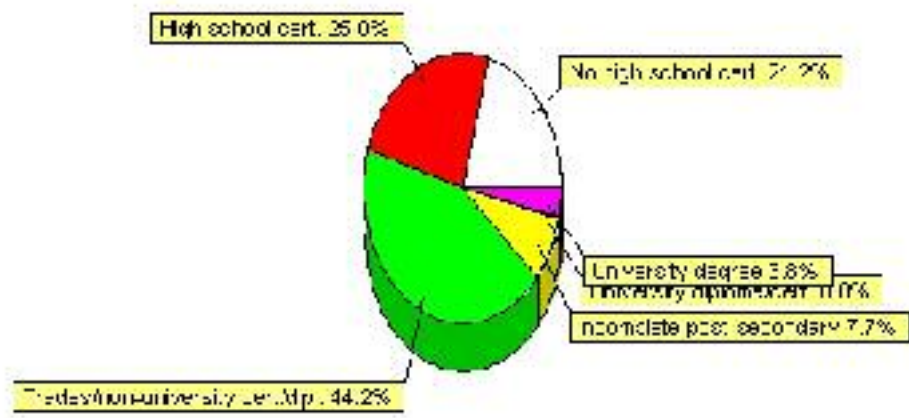


# Education Statistics

Highest level of schooling for Population 20yrs and older	2001	%
People without high school certificates	55	21.15%
People with high school certificates	65	25.00%
People with trades or non-university certificate or diploma	115	44.23%
People with post-secondary education (not completed)	20	7.69%
People with university diploma/certificate	0	0.00%
People with university degree	10	3.85%
Total Population 20 years and older	260	100.00%

Source: Statistics Canada 2001 Census (numbers may not add up due to rounding)

## Standard Highest Level of Schooling 2001



Population with Post Secondary Qualifications	1996	%	2001	%
Agriculture and biological sciences	10	11.11%	0	0.00%
Commerce, management and business administration	20	22.22%	15	12.50%
Educational, recreational and counseling services	20	22.22%	0	0.00%
Engineering and applied science tech. and trades	30	33.33%	50	41.67%
Engineering and applied sciences	0	0.00%	0	0.00%
Fine and applied arts	20	22.22%	0	0.00%
Health professionals, science and technologies	0	0.00%	35	29.17%
Humanities and related fields	0	0.00%	0	0.00%
Mathematics and physical sciences	0	0.00%	0	0.00%
Social sciences and related fields	0	0.00%	10	8.33%
Other and/or no specialization	0	0.00%	0	0.00%
Total people with post secondary qualifications	90	100.00%	120	100.00%
Females with post-secondary qualifications	35	38.89%	65	54.17%
Males with post-secondary qualifications	55	61.11%	55	45.83%

Source: Statistics Canada 1996 & 2001 Census (numbers may not add up due to rounding)

## Labour Force

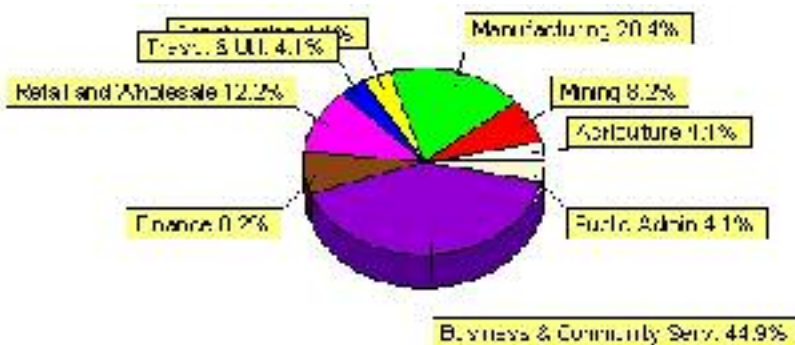
Labour force by activity	1996	2001
In the labour force, both sexes	145	245
Not in the labour force, both sexes	150	65
Total population 15 and over	295	310
Employed, both sexes	140	240
Unemployed, both sexes	0	10
Participation rate, both sexes	49.00%	79.00%
Unemployment rate, both sexes	0.00%	4.00%

Source: Statistics Canada 1996 & 2001 Census (numbers may not add up due to rounding)

Labour Force by Industry Division	1996	% of total	2001	% of total
Agriculture	25	17.24%	10	4.08%
Mining	20	13.79%	20	8.16%
Manufacturing	0	0.00%	50	20.41%
Construction	10	6.90%	10	4.08%
Transportation. & Utilities	40	27.59%	10	4.08%
Retail and Wholesale	10	6.90%	30	12.24%
Finance	0	0.00%	20	8.16%
Business & Community Services	30	20.69%	110	44.90%
Public Administration	0	0.00%	10	4.08%
Total All Industries	145	100.00%	245	100.00%

Source: Statistics Canada 1996 & 2001 Census (numbers may not add up due to rounding)

### Standard Labour Force By Industry - 2001



Labour Force by Major Occupational Groups	1996	%	2001	%
Management occupations	15	10.34%	0	0.00%
Business, Finances and administrative occupations	25	17.24%	40	16.33%
Natural and applied sciences and related occupations	0	0.00%	20	8.16%
Health occupations	0	0.00%	15	6.12%
Occupations in social science; education; government and religion	0	0.00%	10	4.08%
Occupations in art; culture; recreation and sport	0	0.00%	10	4.08%

Sales and service occupations	15	10.34%	55	22.45%
Trades; transport; equipment operators and related occupations	25	17.24%	25	10.20%
Occupations unique to primary industry	40	27.59%	30	12.24%
Occupations unique to processing; manufacturing and utilities	10	6.90%	35	14.29%
Occupations not elsewhere classified	0	0.00%	0	0.00%
Total - All Occupations (major groups)	145	100.00%	245	100.00%
Females - All Occupations	40	27.59%	120	48.98%
Males - All Occupations	105	72.41%	125	51.02%

Source: Statistics Canada 1996 & 2001 Census (numbers may not add up due to rounding)

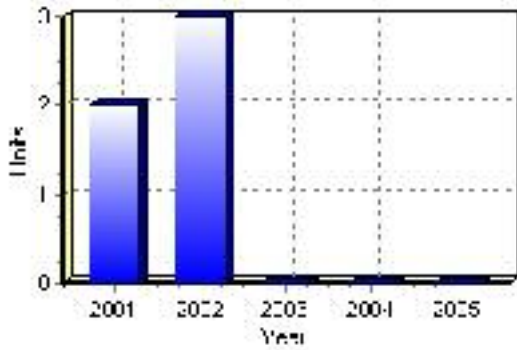
---

# Building Permits

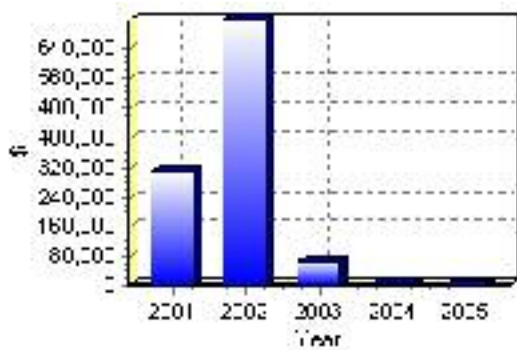
Total Building Permit Values	2001	2002	2003	2004	2005
Building Permits Value, Commercial	\$14,000	\$0	\$0	\$0	\$0
Building Permits Value, Industrial	\$0	\$75,000	\$52,000	\$0	\$0
Building Permits Value, Institutional	\$0	\$0	\$0	\$0	\$0
Building Permits Value, Residential	\$296,000	\$643,000	\$15,000	\$6,000	\$0
Building Permits Value, Total	\$310,000	\$718,000	\$67,000	\$6,000	\$0
Total Housing Starts	2	3	0	0	0

Source: Statistics Canada 2000-2004 Building Permits (numbers may not add up due to rounding)

## Total Housing Starts



## Value of Building Permits



## Dwellings

<b>Occupied Private Dwellings by Type</b>	<b>1996</b>	<b>% of total</b>	<b>2001</b>	<b>% of total</b>
Apartments	0	0.00%	5	3.33%
Detached Duplexes	10	7.41%	0	0.00%
Movable Dwellings	15	11.11%	15	10.00%
Other single attached house	0	0.00%	0	0.00%
Row and semi-detached house	0	0.00%	5	3.33%
Single-detached house	110	81.48%	125	83.33%
Total number of occupied private dwellings	135	100.00%	150	100.00%
Private dwellings, owned	125	92.59%	140	93.33%
Private Dwellings, rented	10	7.41%	0	0.00%

Source: Statistics Canada 1996 & 2001 Census (numbers may not add up due to rounding)

<b>Private Dwellings by Period of Construction</b>	<b># of Dwellings</b>	<b>% of total</b>
Period of construction, before 1946	35	25.00%
Period of construction, 1946 - 1960	0	0.00%
Period of construction, 1961 - 1970	25	17.86%
Period of construction, 1971 - 1980	45	32.14%
Period of construction, 1981 - 1990	10	7.14%
Period of construction, 1991 - 2001	25	17.86%
Total number of private dwellings constructed	140	100.00%

Source: Statistics Canada 2001 Census (numbers may not add up due to rounding)

Disclaimer: Information in this profile has been provided from a variety of external sources. Although every effort has been made to ensure the accuracy, currency and reliability of the content and data, AlbertaFirst.com Ltd. accepts no responsibility in this regard.

© AlbertaFirst.com Ltd., 2006.