

# Marwayne

[www.village.marwayne.ab.ca](http://www.village.marwayne.ab.ca)

## Welcome

The Mayor and Councilors of Marwayne would like to welcome all to our Village.

The Marwayne District was settled around 1903. The name of Marwayne bestowed upon this Village and District is an interesting place name. It is the combination of the first syllables of Marfleet and Wainfleet, the former being the name of the pioneer family, the latter that of their native town in Lincolnshire, England. We have grown to a population of 550 with a trading area of approximately 3,500.

We are a community of friendly people with a small town atmosphere. We also offer the advantages of a lower cost of living. The Village has an abundance of serviced residential lots available for development. We also have no business tax. Business costs are reduced in Marwayne because of lower land prices and no additional business tax.

Marwayne is a strong community-minded area with a large volunteer base. The residents are actively involved in all the sporting facilities in the Village, and in several community organizations. In addition, Marwayne is the gateway to numerous excellent fishing, camping and hunting areas.

Mayor and Council  
Village of Marwayne

## Area Overview

The Village of Marwayne is a small community located just north of the Yellowhead Trans Canada Highway and just west of the Saskatchewan border.

Marwayne is located in one of the best farming and ranching districts in western Canada. In addition, the oil and gas industry is very active in the area.

The Village offers the highest of quality of services for its residents. From educational facilities, to recreation. As well, the local business community offers a wide range of amenities and services to the Village's residents.

## Community Services

### Municipal

Municipal Library located in Marwayne Jubilee School

### Federal

Canada Post Office

## Community Lifestyle

### Recreation

Marwayne has a 3-sheet curling rink and large skating arena with artificial ice. There is also a ball park [Provincial standard with shale infields] and tennis court.

For Camping facilities, there are 20 full water/sewer/power sites, 2 with water, and power, and 2 with power only, washrooms, shower and RV dumping station right in Marwayne. Additional information can be found on our website [ww.village.Marwayne.ab.ca](http://ww.village.Marwayne.ab.ca)

The Marwayne Legion operates the Jubilee Regional Park, located 9 miles north of Marwayne in the Vermilion River Valley. It contains 50 designated camp sites [most with power hookups], tables and stoves or fire rings, as well as many more random sites. The Park features a shower building, 2 camp kitchens with stoves, tested drinking water, trapper's cabin museum, resident park warden, antique farm machinery museum, ball diamond, hiking trails, fishing, public telephone, and an RV dumping station. In addition, specific areas along with camp kitchens may be reserved for reunions or larger groups. Concession buildings are available for rent for group meals or storage with fridges, freezers, stoves, grills and barbecues.

Lea Park Golf Club, the little "Kananaskis" of the North, is adjacent to the Jubilee Park. It has 9-holes, natural-grass-greens, watered fairways, walk-on tee of daylight to dusk, club and cart rentals. A very beautiful and scenic little golf course. Pictures can be seen on our website [www.village.marwayne.ab.ca](http://www.village.marwayne.ab.ca)

### **Community Organizations**

Local recreational organizations include the Curling Club, Agricultural Society Arena Board, Volunteer Fire & Rescue Department, Chamber of Commerce, Elks, Royal Purple Legion, Rodeo Committee, Legion Ladies Auxiliary, Figure Skating Club, Minor Hockey, Mom's & Tots, TOPS, Library Board, Grade 4&5 Basketball, Soccer League, Playschool, Lea Park Golf Club, Minor Ball, Dance Academy, Piano & Voice, Entertainment Committee, Marwayne Community Hall and Seniors Centre.

### **Religious Facilities**

- St. Andrews United Church
- Marwayne Alliance Church
- Sacred Heart Catholic Church
- Bethel Luthern Church (Lea Park)

### **Special Annual Events/Attractions**

The Marwayne Agricultural Society holds the annual Marwayne Fall fair the second weekend of August to exhibit Marwayne's finest vegetables, flowers and handi-work.

The Lea Park Rodeo is a C.P.R.A. sanctioned rodeo held annually on the first weekend of June. This Bud-Professional-Tour rodeo has been consecutively running since 1955. Some of the top professional cowboys in the world are attracted to the scenic setting of Lea Park for the two-day event.

### **Hospitality**

#### ***Accommodation***

- Hotel - Outsiders Inn

#### ***Restaurants***

- Sieng Sieng Restaurant & Lounge
- Just Java Soup/Sandwich and Specialty coffee-bar
- Marwayne Service & Cafe

## **Economic Base**

Marwayne is located in one of the best farming and ranching districts in western Canada. In addition, the oil and gas industry is very

active in the area.

Major industrial facilities include oilfield services and a oil separator service.

## Economic Facts

Major business sectors include retail trade and agricultural support services.

The following business and services are available:

Lawyer, bookkeeping service, banks, grocery stores, beauty salon, craft shop, flower shop, insurance brokerage, restaurants, soup and sandwich bar, cocktail lounge, specialty coffee shop, hardware store, hotel, elevators, seed cleaning plant, fertilizer facilities, electrician, carpenters, convenience store, men's & ladies wear, service station, mobile welding service, reflexology clinic, Sears outlet, fitness center, liquor store, Laundromat, vet supplies, catering service, custom sewing service, guide and outfitter, oilfield construction, esthetics, bottle depot, car wash, massage therapy, tanning bed, stationary, post office, registry and high speed internet.

Village of Marwayne - Mission Statement

"To promote growth, opportunity and economic development to benefit our community."

### Major Businesses Products/Services

- Arc n Spark Welding/Rig Welding/Portable Welding
- ITS Contaminated Transport
- Riverhill Enterprises Welding/Oil Field Service
- T & T Oilfield Service/Welding Service/Mowing
- U.G.G. Chemical/Fertilizer/Farm Supplies
- Cargill Elevator/Fertilizer/Chemical/Farm Supplies

### Financial Institutions

- TD Canada Trust
- Alberta Treasury Branch

## Education

Marwayne is part of the Buffalo Trail Regional School Division #28, headquartered in Wainwright [Tel: 780-842-6144].

### Public

Marwayne Jubilee School provides education for Grades K to 12. The school offers Home Economics, computer labs, facilities for photography, drama and music. Great extra-curricular activities. Sports team regularly advance to provincial competition. The facility has recently been modernized with a 4-million dollar upgrade.

Lil' Critters Playschool

Mom's & Tots

## Emergency Services

### Fire & Rescue

Protection Marwayne is served by a dynamic local, 15-member volunteer fire and rescue department [9-1-1].

### **Police Services**

Marwayne is served by the Kitscoty detachment of the Royal Canadian Mounted Police [RCMP] [Tel: 780-846-2897].

### **Ambulance Services**

The Lloydminster Ambulance Service provides service to Marwayne [Tel: 9-1-1].

## **Health Care**

Nearby hospitals are at Lloydminster and Vermilion. There is a sub-unit of the Minburn-Vermilion Health Unit in Kitscoty.

Marwayne also has 2 buildings of self-contained seniors housing. Lloydminster, Islay and Vermilion provide further nursing home care.

Currently we have a Reflexology & Massage Clinic available in Marwayne.

## **Key Contacts for Business Development**

### **Municipal**

Village of Marwayne  
Box 113  
Marwayne, Alberta  
T0B 2X0  
Tel: 780-847-3962  
Fax: 780-847-3324  
[vilmar@telusplanet.net](mailto:vilmar@telusplanet.net)

Roger Parkyn  
Mayor

[Mrs.] Joanne Horton  
Administrative Official

### **Provincial (Updated May 2001)**

[Alberta Economic Development](#)  
Box 412  
Room 308, Provincial Building  
5025 - 49 Avenue  
St. Paul, Alberta  
T0A 3A4  
Tel: 780-645-6358  
Fax: 780-645-6241  
[Garry Krause](#), Regional Manager  
[Maryann Robinson](#), Client Service Representative

Lloyd Snelgrove  
Member of the Legislative Assembly (MLA)  
Vermilion - Lloydminster Constituency

Constituency Office  
5036 - 49 Avenue  
Vermilion, AB T9X 1B7  
Phone: (780) 875-5792  
Phone: (780) 853-4202  
Fax: (780) 853-5770  
Toll Free Number: 1-800-567-7644  
[Vermilion.Lloydminster@assembly.ab.ca](mailto:Vermilion.Lloydminster@assembly.ab.ca)

Legislature Office  
#130, 10800-97 Avenue  
Edmonton, AB  
T5K - 2B6  
Phone: (780) 415-9425  
Fax: (780) 422-5385

### **Federal (Updated June 2004)**

Leon Benoit  
Member of Parliament [MP]  
Vegreville-Wainwright Constituency  
House of Commons  
Suite 613, Justice Building  
Ottawa ON K1A 0A6  
Tel: 613-992-4171

Constituency Office:  
P.O. Box 300  
Mannville, Alberta  
T0B 2W0  
Tel: 780-763-6130  
Toll-Free in AB: 1-800-463-1194  
Fax: 780-763-6132

## **Location**

Marwayne is located in the County of Vermilion River #24, at the junction of Highway 45 and Secondary Highway 897. It is 33 km northwest of Lloydminster and 240 km east of Edmonton.

## **Post Secondary Education**

Lakeland College has 2 campuses in nearby Vermilion and Lloydminster. The Lloydminster campus offers a 2 year university transfer program.

## **Taxation**

---

	<u>Residential/Farmland</u>	<u>Non-Residential</u>
<b>2005</b>		
Municipal Tax Rate	13.9270	18.8710
Education - Alberta School Foundation Fund Tax	3.5330	7.6690

### **Mill Rates (2002)**

§ Residential - School 4.47, Municipal 16.8

§ Non-Residential – School 8.19, Municipal 16.8

§ Machinery & Equipment - 16.8

## **Transportation**

### **Air Service**

The nearest regional airport is at the Lloydminster Airport, which has a 1,525 metre runway and all-weather facilities. Local carriers include Air BC [daily service to Calgary].

### **Highways**

Connecting highways are Highway 45, leading east to the Saskatchewan border, and Secondary Highway 897, leading north to Whitney Lakes Provincial Park and south to Kitscoty.

### **Trucking Firms**

Rosenau Transport

Priority Post, Loomis, Purolator, CanPar, United Parcel Service

## **Utilities**

### **Electrical Power**

ATCO Power Ltd.

6208 - 48th Street

Lloydminster, Alberta

Tel: 1-800-668-2248

### **Natural Gas**

County of Vermilion River

4912 - 50 Avenue

Kitscoty, Alberta

Tel: 780-846-2222

### **Telephone**

TELUS

Box 2422

Edmonton, Alberta

T5J 27S

Tel: 310-7353

### **Water Supply**

The source of water is by underground wells.

The Utility rates for water, sewer and garbage, residential usage is a minimum \$42.50/month for 27m<sup>3</sup> and \$1.56m<sup>3</sup> charge for

amounts over 27m3 gallons.

### **Waste Management**

A lagoon that is able to accommodate up to 1,100 people provides sewage treatment.

Residential homes have garbage picked up weekly (Thursday mornings). Marwayne and the County of Vermilion have a supervised landfill, and recycling bins for cardboard and paper at Marwayne, open 2 days per week Wednesdays & Saturdays.

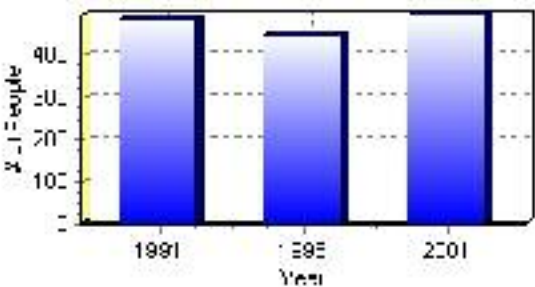
# Population

## Total Population

Population 2004*	495
Population 2003*	495
Population 2002*	495
Population 2001**	495
Population 2000*	449
Population 1996**	449
Population 1991**	484
Population % change 1991-1996	-7.80%
Population % change 1996-2001	9.29%

\* Source: Official Population List, Alberta Municipal Affairs  
\*\* Source: Statistics Canada 1991, 1996, & 2001 Census

## Total Population 1991-2001

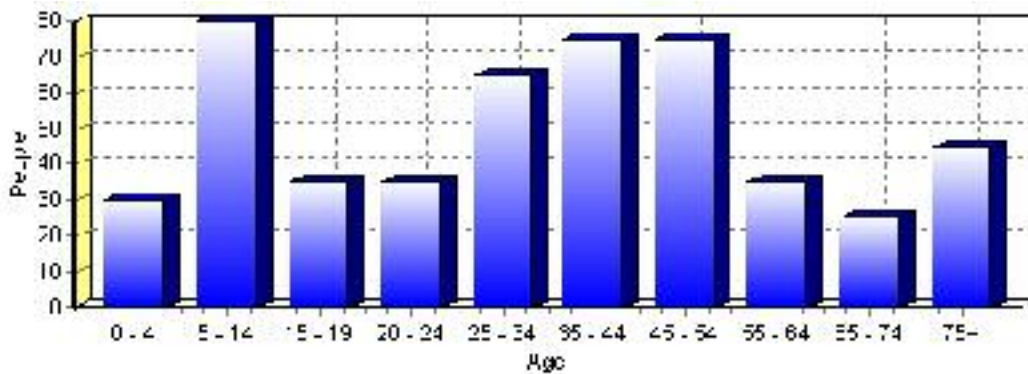




Population by Age and Gender	1996 Male	1996 Female	1996 Total	2001 Male	2001 Female	2001 Total
Age 0 - 4	10	20	30	20	10	30
Age 5 - 14	30	40	70	35	45	80
Age 15 - 19	25	10	35	10	25	35
Age 20 - 24	15	15	30	20	15	35
Age 25 - 34	25	25	50	30	35	65
Age 35 - 44	30	35	65	40	35	75
Age 45 - 54	25	25	50	40	35	75
Age 55 - 64	25	10	35	20	15	35
Age 65 - 74	10	25	35	10	15	25
Age 75 and older	30	25	55	20	25	45
Total All Persons	225	225	450	250	245	495

Source: Statistics Canada 1996 & 2001 Census (numbers may not add up due to rounding)

### Marwayne Population by Age Group (2001)

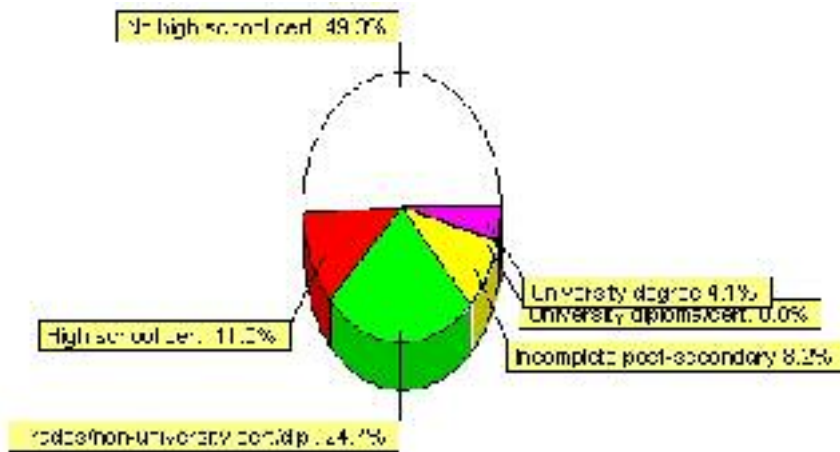


# Education Statistics

Highest level of schooling for Population 20yrs and older	2001	%
People without high school certificates	180	49.32%
People with high school certificates	40	10.96%
People with trades or non-university certificate or diploma	90	24.66%
People with post-secondary education (not completed)	30	8.22%
People with university diploma/certificate	0	0.00%
People with university degree	15	4.11%
Total Population 20 years and older	365	100.00%

Source: Statistics Canada 2001 Census (numbers may not add up due to rounding)

## Marwayne Highest Level of Schooling 2001



Population with Post Secondary Qualifications	1996	%	2001	%
Agriculture and biological sciences	0	0.00%	0	0.00%
Commerce, management and business administration	25	21.74%	30	27.27%
Educational, recreational and counseling services	25	21.74%	15	13.64%
Engineering and applied science tech. and trades	40	34.78%	50	45.45%
Engineering and applied sciences	0	0.00%	0	0.00%
Fine and applied arts	0	0.00%	0	0.00%
Health professionals, science and technologies	20	17.39%	15	13.64%
Humanities and related fields	0	0.00%	10	9.09%
Mathematics and physical sciences	0	0.00%	0	0.00%
Social sciences and related fields	0	0.00%	0	0.00%
Other and/or no specialization	0	0.00%	0	0.00%
Total people with post secondary qualifications	115	100.00%	110	100.00%
Females with post-secondary qualifications	65	56.52%	45	40.91%
Males with post-secondary qualifications	50	43.48%	65	59.09%

Source: Statistics Canada 1996 & 2001 Census (numbers may not add up due to rounding)

## Labour Force

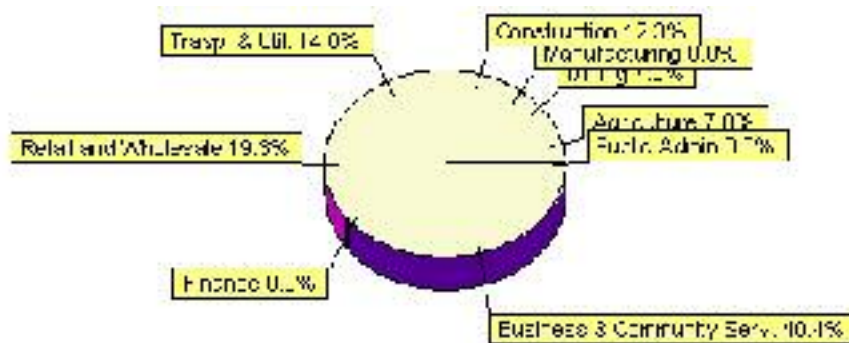
Labour force by activity	1996	2001
In the labour force, both sexes	230	285
Not in the labour force, both sexes	115	115
Total population 15 and over	345	405
Employed, both sexes	230	270
Unemployed, both sexes	0	20
Participation rate, both sexes	66.00%	70.00%
Unemployment rate, both sexes	0.00%	7.00%

Source: Statistics Canada 1996 & 2001 Census (numbers may not add up due to rounding)

Labour Force by Industry Division	1996	% of total	2001	% of total
Agriculture	10	4.35%	20	7.02%
Mining	25	10.87%	20	7.02%
Manufacturing	0	0.00%	0	0.00%
Construction	10	4.35%	35	12.28%
Transportation. & Utilities	10	4.35%	40	14.04%
Retail and Wholesale	65	28.26%	55	19.30%
Finance	20	8.70%	0	0.00%
Business & Community Services	65	28.26%	115	40.35%
Public Administration	10	4.35%	0	0.00%
Total All Industries	230	100.00%	285	100.00%

Source: Statistics Canada 1996 & 2001 Census (numbers may not add up due to rounding)

### Marwayne Labour Force By Industry - 2001



Labour Force by Major Occupational Groups	1996	%	2001	%
Management occupations	35	15.22%	30	10.53%
Business, Finances and administrative occupations	15	6.52%	50	17.54%
Natural and applied sciences and related occupations	10	4.35%	0	0.00%
Health occupations	0	0.00%	0	0.00%
Occupations in social science; education; government and religion	15	6.52%	20	7.02%
Occupations in art; culture; recreation and sport	20	8.70%	0	0.00%

Sales and service occupations	50	21.74%	55	19.30%
Trades; transport; equipment operators and related occupations	60	26.09%	70	24.56%
Occupations unique to primary industry	20	8.70%	45	15.79%
Occupations unique to processing; manufacturing and utilities	15	6.52%	0	0.00%
Occupations not elsewhere classified	0	0.00%	0	0.00%
Total - All Occupations (major groups)	230	100.00%	285	100.00%
Females - All Occupations	100	43.48%	120	42.11%
Males - All Occupations	130	56.52%	165	57.89%

Source: Statistics Canada 1996 & 2001 Census (numbers may not add up due to rounding)

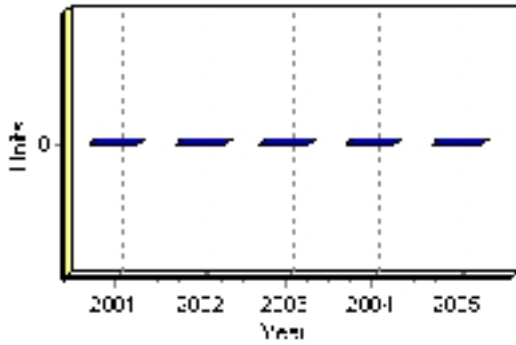
---

# Building Permits

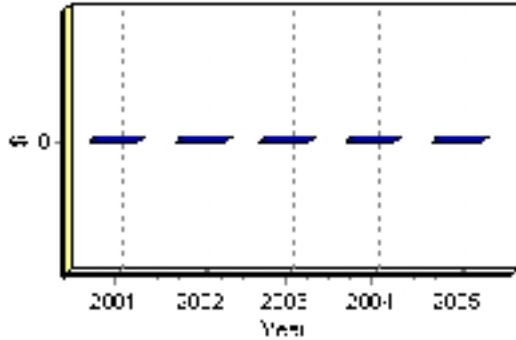
Total Building Permit Values	2001	2002	2003	2004	2005
Building Permits Value, Commercial	\$0	\$0	\$0	\$0	\$0
Building Permits Value, Industrial	\$0	\$0	\$0	\$0	\$0
Building Permits Value, Institutional	\$0	\$0	\$0	\$0	\$0
Building Permits Value, Residential	\$0	\$0	\$0	\$0	\$0
Building Permits Value, Total	\$0	\$0	\$0	\$0	\$0
Total Housing Starts	0	0	0	0	0

Source: Statistics Canada 2000-2004 Building Permits (numbers may not add up due to rounding)

## Total Housing Starts



## Value of Building Permits



## Dwellings

<b>Occupied Private Dwellings by Type</b>	<b>1996</b>	<b>% of total</b>	<b>2001</b>	<b>% of total</b>
Apartments	0	0.00%	0	0.00%
Detached Duplexes	0	0.00%	0	0.00%
Movable Dwellings	25	13.89%	10	5.13%
Other single attached house	0	0.00%	0	0.00%
Row and semi-detached house	30	16.67%	10	5.13%
Single-detached house	130	72.22%	175	89.74%
Total number of occupied private dwellings	180	100.00%	195	100.00%
Private dwellings, owned	125	69.44%	155	79.49%
Private Dwellings, rented	55	30.56%	40	20.51%

Source: Statistics Canada 1996 & 2001 Census (numbers may not add up due to rounding)

<b>Private Dwellings by Period of Construction</b>	<b># of Dwellings</b>	<b>% of total</b>
Period of construction, before 1946	35	16.67%
Period of construction, 1946 - 1960	35	16.67%
Period of construction, 1961 - 1970	25	11.90%
Period of construction, 1971 - 1980	60	28.57%
Period of construction, 1981 - 1990	35	16.67%
Period of construction, 1991 - 2001	20	9.52%
Total number of private dwellings constructed	210	100.00%

Source: Statistics Canada 2001 Census (numbers may not add up due to rounding)

Disclaimer: Information in this profile has been provided from a variety of external sources. Although every effort has been made to ensure the accuracy, currency and reliability of the content and data, AlbertaFirst.com Ltd. accepts no responsibility in this regard.

© AlbertaFirst.com Ltd., 2006.