

# Two Hills

[www.townoftwohills.com](http://www.townoftwohills.com)

## Welcome

A cordial down home welcome awaits you in **Two Hills**. Our fine community has something for everyone. An urban centre nestled in an agricultural region, always prepared for growth. We are very proud of our fine community and welcome you to share it with us, as an investor, new citizen or a guest. Come and let us show you what we are all about.

Leonard Ewanishan  
Mayor of Two Hills

## Area Overview

Two Hills is a perfect blend of town and country. It is a small community with a population of 1,108 residents, located close enough to Edmonton to enjoy the benefits that Alberta's capital city has to offer, but far enough to enjoy a contemporary lifestyle without the problems and congestion of big city living. A great place to live, clean and tidy with tree-shaded streets of new and mature neighbourhoods, complete with sidewalks, paved streets and fully serviced. Homes have easy access to schools, parks and commercial areas.

Vacant property is available through the private sector as well as through the Town Office. "Build your dream home" in the new development - overlooking a newly developed 9-hole golf course.

For the home buyer, a range of affordable properties are available for sale or rent; single family homes, mobile homes, apartments, 4-plexes and duplexes.

The quiet nature of Two Hills, with ultra modern facilities available, is welcome to the many senior citizens who have chosen the town as their retirement home. There they can enjoy a carefree lifestyle.

For years, the town has accepted the motto "Small Town With A Big Future". Town Council and administration are always at hand, committed to improve the quality of life and continue to promote the "right kind of growth" to create a healthy and viable community.

The outstanding range of public services, quality education, health care facilities, recreational facilities and diverse commercial services make Two Hills a complete community.

## Community Services

Town of Two Hills - Town Office  
4712 - 50 Street, P.O. Box 630  
Two Hills, Alberta  
T0B 4K0  
Telephone: 780-657-3395  
Fax: 780-657-2158  
website: [www.centraleastalberta.com](http://www.centraleastalberta.com)  
Alice Melnyk Public Library  
Food Bank  
Museum  
Sanitary Landfill  
Swimming Pool  
Family and Community Support Services

## **Federal**

Lamont-Two Hills Business Development Corporation  
Canada Post Office  
Royal Canadian Mounted Police

# **Community Lifestyle**

## **Recreation**

Recreation in Two Hills revolves around its excellent facilities, all contained within the D.M. Geleta Recreational Park. Within these grounds is the Two Hills Centennial Hall, Two Hills Centennial Arena, and the Two Hills Curling Club. Features to enhance these facilities include the Two Hills Swimming Pool, ball parks, rodeo grounds, tennis courts and a picnic site along the banks of the Vermilion River. In addition, the newly constructed Two Hills Senior Citizens Club serves the community's senior citizens, and there are several playgrounds for children to play in.

Two Hills also has one of the most challenging and picturesque 9 hole golf courses in Northeastern Alberta.

Two Hills is also located within 25 minutes of three beautiful lakes.

Sandy Lake, located northwest of Two Hills, is a great place to take a weekend camping trip. Here you will find a quiet lake that offers you private, secluded camp stalls, small store, ball park and sandy beach.

Jackfish Lake, located east of Two Hills, is home to John Dudar Park. The Park was named the long time councilor of the area and offers you a quiet campsite in the midst of an agricultural backdrop. The park is complete with hook up camping stalls and a rentable pavilion. It also houses an open air bandstand that has played host to such acts as Farmers Daughter, and Nitty Gritty Dirt Band.

Lac Sante, located northeast of Two Hills, is a great place to get away for a day of fishing. Unfortunately the campsites around the lake are all private but you are able to launch your boat at the County boat launch and picnic area to take in some great pike and walleye fishing.

## **Community Organizations**

Over 25 community groups, associates and service clubs work together to improve the quality of life in our community. The volunteer effort and community spirit is phenomenal.

## **Religious Services**

- Full Gospel Christian Centre
- Holy Trinity Ukrainian Orthodox Church
- Two Hills Fellowship Chapel
- Two Hills United Church
- Ukrainian Catholic Parish

## **Special Annual Events/Attractions**

The Two Hills & District Historical Museum is located in the Two Hills Community Centre. This museum houses many items used by the area's ancestors. The Historical Society has published a history book "Down Memory Trails" which is available for sale.

View the town's bronze statues, located in Two Hills & Area Heritage Park, carved by the famous John Weaver.

## Annual Events:

- Lion's Rodeo
- Ukrainian Dancer's Concert
- Ladies Night
- Ice Show
- Snowmobile Rally
- Ladies Curling Bonspiel
- Men's Curling Bonspiel
- Mixed Curling Bonspiel
- Farmers' Bonspiel
- Community Christmas Concert
- Community Garage Sale in June
- Ribfest
- Canada Day Celebrations
- Victim Services
- Seniors Week
- Kids of Steel - Triathlon
- Tourist Information Centre

Also, raffles, bingos and bake sales are hosted by various clubs and organizations throughout the year.

## Hospitality

### ***Accommodation***

- Town and Country Motel
- The Junction Inn
- Riverside Hotel
- Two Hills Inn

### ***Restaurants***

- Wong's Restaurant
- Mamma's & Pappa's
- Golden Wing's Restaurant
- G.O.'s Drive Inn
- Two Hills Burger Palace

## Economic Base

Local natural resources include salt deposits, gravel and sand, coal, and water.

The area around Two Hills is blessed with rich soil and idyllic conditions, which has led to a prosperous community of mixed farming operations. Modern technology has enabled the family farm to expand, encompassing more and more acreage, producing crops such as canola, wheat, oats, barely, rye, flax and now field peas, legumes and sunflowers. Livestock is also a vital part of this industry, with increased activity in the rearing of hogs in ultra-modern facilities, and improved pastures to support larger herds of dairy and beef cattle.

The importance of agriculture to Two Hills is obvious. To complement the agricultural industry are many businesses within the town of Two Hills who service this vital industry.

## Economic Facts

Highland Produce Ltd. is an egg processing plant producing specialty egg products, supplying grocery stores, caterers, restaurants, etc.

Environmental Metal Works is a manufacturer of refuse containers.

Double A Trailers manufacture all types of trailers, flatdeck to horse trailers.

### Major Businesses Products/Services

- Highland Produce Ltd. Egg Processing
- Environmental Metal Works Container Fabricator

### Financial Institutions

- Alberta Treasury Branch
- Battle River Credit Union
- Lamont-Two Hills Business Development Corporation (CFDC)

## Education

Two Hills School is grade Kindergarten-Grade 12, we also have a Mennonite school. The playschool operates two mornings per week.

## Emergency Services

### Fire Protection

The Two Hills Volunteer Fire Department has 15 members, and provides fire protection to the town of Two Hills and surrounding area [telephone: 780-657-2200.

### Police Services

The Royal Canadian Mounted Police with the barracks situated in Two Hills have 5 Mounties on staff and four vehicles at their disposal [telephone: 780-657-2760.

### Ambulance Services

Lakeland Ambulance Services provide an efficient ambulance service to Two Hills and area [telephone: 780-657-3522.

## Health Care

The Two Hills Health Care Centre is an accredited multi-level care complex. The composition of this facility is acute care and long-term care. The complex opened its doors in the spring of 1986, and contains current state-of-the-art equipment and facilities, enabling it to be a valuable health care resource to Two Hills and the surrounding area.

The Vegreville Health Unit/Two Hills Sub-Office is also located in the Health Care Centre, and offers services such as public health

nursing, home care nursing, and Alberta Aids to Daily Living.

The medical clinic is conveniently located in downtown Two Hills, with two physicians on staff.

## Key Contacts for Business Development

### Municipal

Leonard Ewanishan, Mayor  
Town of Two Hills  
Box 630  
Two Hills, Alberta  
T0B 4K0  
Tel: 780-657-3395  
Fax: 780-657-2158  
[townth@telusplanet.net](mailto:townth@telusplanet.net)  
[www.centraleastalberta.com](http://www.centraleastalberta.com)

Marcia Twerdochlib  
Chief Administrative Officer

Dick McLean  
Two Hills & District Chamber of Commerce  
Box 225  
Two Hills, AB T0B 4K0  
Phone: 780-657-3341

### Provincial (Updated May 2006)

[Alberta Economic Development](#)  
Box 412  
Room 308, Provincial Building  
5025 - 49 Avenue  
St. Paul, Alberta  
T0A 3A4  
Tel: 780-645-6358  
Fax: 780-645-6241  
[Garry Krause](#), Regional Manager  
[Maryann Robinson](#), Client Service Representative

Mr. Ray Danyluk (PC)  
MLA for Lac La Biche-St. Paul

Constituency Office  
4434-50th Avenue  
St. Paul, AB  
T0A 3A2  
Phone: (780) 645-6999  
Toll Free: 1-866-674-6999  
Fax: (780) 645-5787  
[laclabiche.stpaul@assembly.ab.ca](mailto:laclabiche.stpaul@assembly.ab.ca)

Legislature Office  
#503 Legislature Building

10800-97 Avenue  
Edmonton, AB  
T5K - 2B6  
Phone: (780) 415-9578  
Fax: (780) 422-6284

Lamont-Two Hills Business Development Corporation  
Bernice Sambor - Manager  
Box 547  
Two Hills, AB TOB 4K0  
[lthbdc@telusplanet.net](mailto:lthbdc@telusplanet.net)

### Federal

Westlock--St. Paul, Alberta  
STORSETH, Brian (Conservative)  
Parliamentary Address  
House of Commons  
Ottawa, Ontario  
K1A 0A6  
Telephone: (613) 996-1783  
Fax: (613) 995-1415  
E-Mail: [Storseth.B@parl.gc.ca](mailto:Storseth.B@parl.gc.ca)

## Location

"A Gateway to the North", the Town of Two Hills is located in the County of Two Hills #21, at the junction of Highway 36 and 45. It is 136 km east of Edmonton, 52 km northeast of Vegreville, 55 km southeast of St. Paul, and 97 km northeast of Vermilion.

## Post Secondary Education

A number of post-secondary facilities are located within 35 to 45 minutes from Two Hills. Video Conferencing is available at the offices of Lamont-Two Hills Community Futures. Business Seminars are also available.

## Taxation

---

	<u>Residential/Farmland</u>	<u>Non-Residential</u>
<b>2005</b>		
Municipal Tax Rate	19.3000	22.3000
Education - Alberta School Foundation Fund Tax Rate	4.8000	12.8000
Allowance for Non-Collection of Requisitioned Taxes	.5500	.5500
Seniors Lodge Accommodation Tax Rate	.5100	.5100

---

### Mill Rates [1994]

Residential - Public 24.55  
Residential - Separate N/A  
Non-Residential - Public 27.95  
Non-Residential - Separate N/A

# Transportation

## Air Service

The Two Hills Airport is located 2 miles west and 1/2 mile south from town. This facility provides a well lit, 2,900 foot runway. This airport was designed to be expanded to meet any future area transportation demands.

## Highways

Two Hills is located at the junction of Highway 36 and 45. Along Highway 36, Two Hills is 33 km north of the Yellowhead Highway. Along Highway 36, Two Hills is 39 km south of Highway 28.

## Bus Services

Quality Time Tours offers service to and from Edmonton, Sunday to Friday.

## Couriers and Taxis

Two Hills is serviced by major courier services, i.e., Purolator, Loomis. and freight service provided by Maiko Trucking from Morinville 780-445-0046

# Utilities

## Electrical Power

Atco Electric  
5001 - 47 Avenue  
Two Hills, Alberta  
T0B 4K0  
Telephone: 780-657-2588

## Natural Gas

Centra Gas  
5102 - 49 Avenue  
St. Paul, Alberta  
Telephone: [collect] 780-645-3734

## Telephone

Telus  
Telephone: 310-2255

## Water Supply

The source of water is non-chlorinated wells.

## Waste Management

Residential garbage is collected once weekly, while commercial and industrial garbage is collected twice weekly.

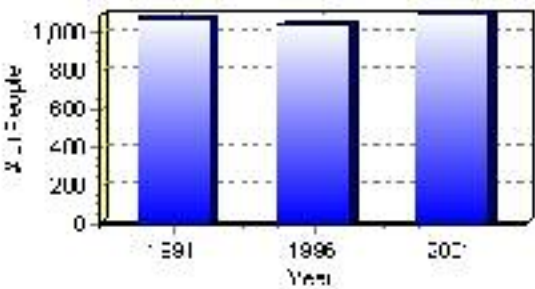
# Population

## Total Population

Population 2004*	1,091
Population 2003*	1,091
Population 2002*	1,091
Population 2001**	1,095
Population 2000*	1,040
Population 1996**	1,040
Population 1991**	1,075
Population % change 1991-1996	-3.37%
Population % change 1996-2001	4.67%

\* Source: Official Population List, Alberta Municipal Affairs  
\*\* Source: Statistics Canada 1991, 1996, & 2001 Census

## Total Population 1991-2001

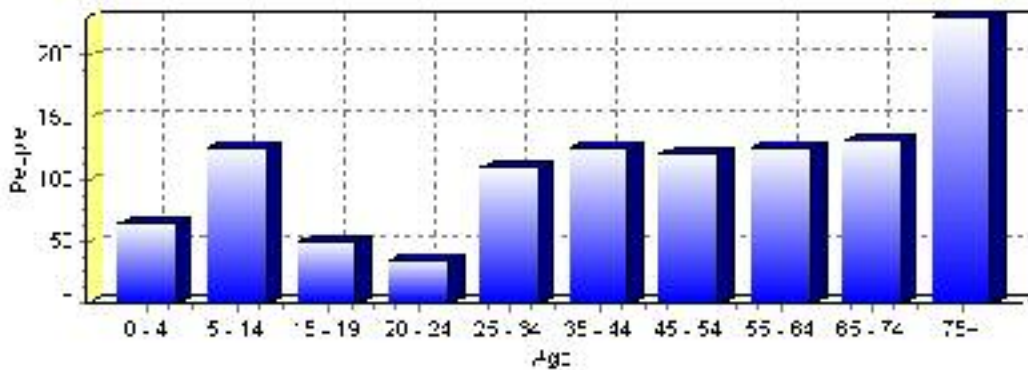




Population by Age and Gender	1996 Male	1996 Female	1996 Total	2001 Male	2001 Female	2001 Total
Age 0 - 4	25	30	55	35	30	65
Age 5 - 14	50	35	85	60	65	125
Age 15 - 19	25	30	55	30	20	50
Age 20 - 24	30	25	55	15	20	35
Age 25 - 34	50	50	100	50	60	110
Age 35 - 44	70	65	135	60	65	125
Age 45 - 54	50	50	100	55	65	120
Age 55 - 64	45	55	100	60	65	125
Age 65 - 74	55	75	130	60	70	130
Age 75 and older	90	150	240	85	145	230
Total All Persons	490	555	1,045	505	585	1,090

Source: Statistics Canada 1996 & 2001 Census (numbers may not add up due to rounding)

### Two Hills Population by Age Group (2001)

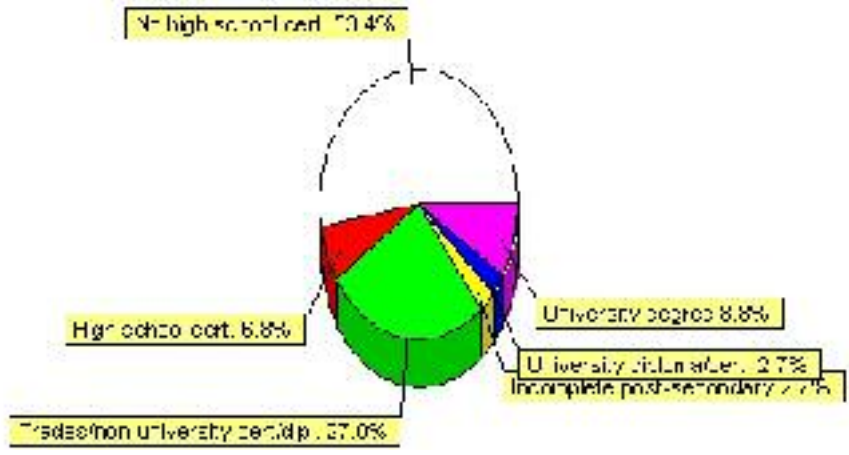


# Education Statistics

Highest level of schooling for Population 20yrs and older	2001	%
People without high school certificates	395	53.38%
People with high school certificates	50	6.76%
People with trades or non-university certificate or diploma	200	27.03%
People with post-secondary education (not completed)	20	2.70%
People with university diploma/certificate	20	2.70%
People with university degree	65	8.78%
Total Population 20 years and older	740	100.00%

Source: Statistics Canada 2001 Census (numbers may not add up due to rounding)

## Two Hills Highest Level of Schooling 2001



Population with Post Secondary Qualifications	1996	%	2001	%
Agriculture and biological sciences	10	3.70%	20	7.02%
Commerce, management and business administration	50	18.52%	30	10.53%
Educational, recreational and counseling services	45	16.67%	35	12.28%
Engineering and applied science tech. and trades	55	20.37%	100	35.09%
Engineering and applied sciences	0	0.00%	0	0.00%
Fine and applied arts	10	3.70%	10	3.51%
Health professionals, science and technologies	40	14.81%	80	28.07%
Humanities and related fields	20	7.41%	0	0.00%
Mathematics and physical sciences	10	3.70%	10	3.51%
Social sciences and related fields	10	3.70%	10	3.51%
Other and/or no specialization	0	0.00%	0	0.00%
Total people with post secondary qualifications	270	100.00%	285	100.00%
Females with post-secondary qualifications	130	48.15%	135	47.37%
Males with post-secondary qualifications	140	51.85%	150	52.63%

Source: Statistics Canada 1996 & 2001 Census (numbers may not add up due to rounding)

## Labour Force

Labour force by activity	1996	2001
In the labour force, both sexes	450	390
Not in the labour force, both sexes	335	400
Total population 15 and over	790	785
Employed, both sexes	425	355
Unemployed, both sexes	25	30
Participation rate, both sexes	57.00%	50.00%
Unemployment rate, both sexes	6.00%	8.00%

Source: Statistics Canada 1996 & 2001 Census (numbers may not add up due to rounding)

Labour Force by Industry Division	1996	% of total	2001	% of total
Agriculture	25	5.62%	35	8.97%
Mining	30	6.74%	10	2.56%
Manufacturing	25	5.62%	20	5.13%
Construction	15	3.37%	0	0.00%
Transportation. & Utilities	25	5.62%	0	0.00%
Retail and Wholesale	70	15.73%	35	8.97%
Finance	35	7.87%	15	3.85%
Business & Community Services	190	42.70%	250	64.10%
Public Administration	55	12.36%	15	3.85%
Total All Industries	445	100.00%	390	100.00%

Source: Statistics Canada 1996 & 2001 Census (numbers may not add up due to rounding)

### Two Hills Labour Force By Industry - 2001



Labour Force by Major Occupational Groups	1996	%	2001	%
Management occupations	55	12.36%	25	6.49%
Business, Finances and administrative occupations	75	16.85%	60	15.58%
Natural and applied sciences and related occupations	10	2.25%	0	0.00%
Health occupations	35	7.87%	45	11.69%
Occupations in social science; education; government and religion	15	3.37%	25	6.49%
Occupations in art; culture; recreation and sport	10	2.25%	0	0.00%

Sales and service occupations	110	24.72%	100	25.97%
Trades; transport; equipment operators and related occupations	75	16.85%	55	14.29%
Occupations unique to primary industry	40	8.99%	55	14.29%
Occupations unique to processing; manufacturing and utilities	20	4.49%	20	5.19%
Occupations not elsewhere classified	0	0.00%	0	0.00%
Total - All Occupations (major groups)	445	100.00%	385	100.00%
Females - All Occupations	200	44.94%	200	51.95%
Males - All Occupations	245	55.06%	185	48.05%

Source: Statistics Canada 1996 & 2001 Census (numbers may not add up due to rounding)

---

## Income

<b>Family Income (Number of Families)</b>	<b>1996</b>	<b>%</b>	<b>2001</b>	<b>%</b>
less than \$19,999	35	13.73%	35	13.73%
\$20,000 - \$39,999	100	39.22%	120	47.06%
\$40,000 - \$59,999	50	19.61%	50	19.61%
\$60,000 and over	70	27.45%	120	47.06%
Total number of families	255	100.00%	325	127.45%
Average family income	\$46,457		\$51,393	
Median family income	\$37,718		\$36,385	

Source: Statistics Canada 1996 & 2001 Census (numbers may not add up due to rounding)

<b>Household Income (Number of Households)</b>	<b>1996</b>	<b>%</b>	<b>2001</b>	<b>%</b>
less than \$19,999	200	44.94%	150	34.09%
\$20,000 - \$39,999	120	26.97%	135	30.68%
\$40,000 - \$59,999	50	11.24%	65	14.77%
\$60,000 and over	20	4.49%	90	20.45%
Total number of households	445	100.00%	440	100.00%
Average household income	\$34,877		\$38,985	
Median household income	\$21,796		\$27,670	

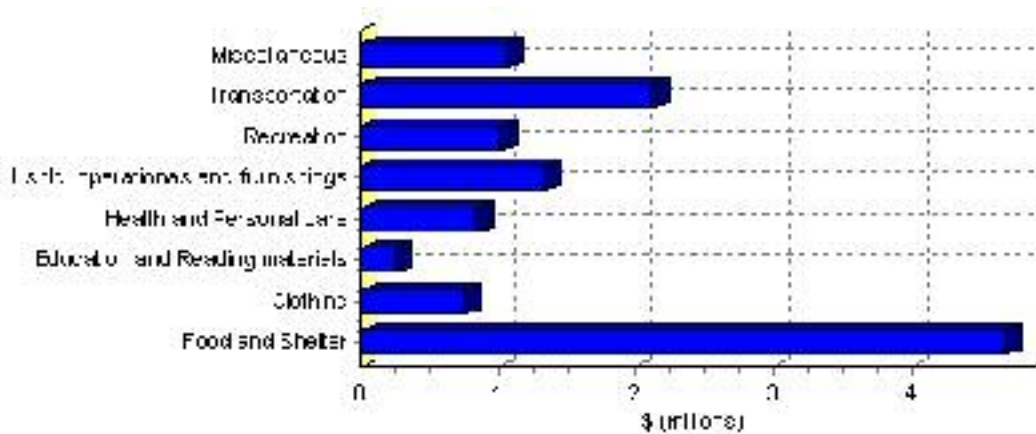
Source: Statistics Canada 1996 & 2001 Census (numbers may not add up due to rounding)

# Family Expenditure

Expenditure Category	1992	% of total	1996	% of total
Food and Shelter	\$4,049,025	39.42%	\$4,686,142	38.74%
Clothing	\$624,500	6.08%	\$757,449	6.26%
Education and Reading materials	\$164,005	1.60%	\$248,125	2.05%
Health and Personal care	\$659,375	6.42%	\$844,300	6.98%
Hshld. operations and furnishings	\$1,114,165	10.85%	\$1,344,342	11.11%
Recreation	\$702,995	6.84%	\$1,022,591	8.45%
Transportation	\$2,093,665	20.38%	\$2,124,462	17.56%
Miscellaneous	\$855,340	8.33%	\$1,067,507	8.83%
Total Current Consumption	\$10,272,300	100.00%	\$12,094,918	100.00%
Total # of Households	460		445	
Average Consumption per Household	\$22,331		\$27,180	

Source: Statistics Canada Family Expenditure Survey 1992 & 1996 (numbers may not add up due to rounding).

## Two Hills Family Expenditures (1996)

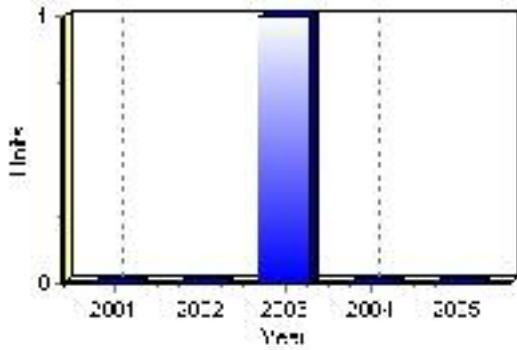


# Building Permits

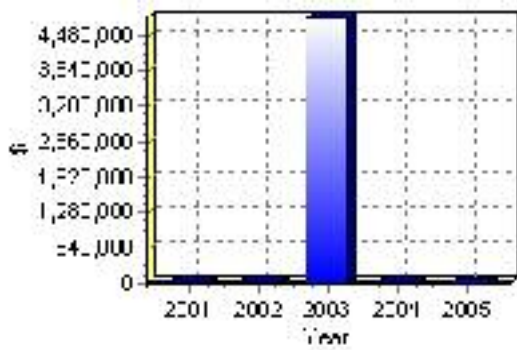
Total Building Permit Values	2001	2002	2003	2004	2005
Building Permits Value, Commercial	\$0	\$0	\$25,000	\$25,000	\$0
Building Permits Value, Industrial	\$0	\$0	\$430,000	\$0	\$0
Building Permits Value, Institutional	\$35,000	\$0	\$4,200,000	\$7,000	\$0
Building Permits Value, Residential	\$0	\$20,000	\$135,000	\$0	\$0
Building Permits Value, Total	\$35,000	\$20,000	\$4,790,000	\$32,000	\$0
Total Housing Starts	0	0	1	0	0

Source: Statistics Canada 2000-2004 Building Permits (numbers may not add up due to rounding)

## Total Housing Starts



## Value of Building Permits



## Dwellings

<b>Occupied Private Dwellings by Type</b>	<b>1996</b>	<b>% of total</b>	<b>2001</b>	<b>% of total</b>
Apartments	0	0.00%	15	3.41%
Detached Duplexes	0	0.00%	5	1.14%
Movable Dwellings	20	4.49%	0	0.00%
Other single attached house	0	0.00%	0	0.00%
Row and semi-detached house	35	7.87%	30	6.82%
Single-detached house	370	83.15%	385	87.50%
Total number of occupied private dwellings	445	100.00%	440	100.00%
Private dwellings, owned	350	78.65%	310	70.45%
Private Dwellings, rented	95	21.35%	135	30.68%

Source: Statistics Canada 1996 & 2001 Census (numbers may not add up due to rounding)

<b>Private Dwellings by Period of Construction</b>	<b># of Dwellings</b>	<b>% of total</b>
Period of construction, before 1946	65	15.12%
Period of construction, 1946 - 1960	105	24.42%
Period of construction, 1961 - 1970	80	18.60%
Period of construction, 1971 - 1980	115	26.74%
Period of construction, 1981 - 1990	55	12.79%
Period of construction, 1991 - 2001	10	2.33%
Total number of private dwellings constructed	430	100.00%

Source: Statistics Canada 2001 Census (numbers may not add up due to rounding)

Disclaimer: Information in this profile has been provided from a variety of external sources. Although every effort has been made to ensure the accuracy, currency and reliability of the content and data, AlbertaFirst.com Ltd. accepts no responsibility in this regard.

© AlbertaFirst.com Ltd., 2006.