

Nampa

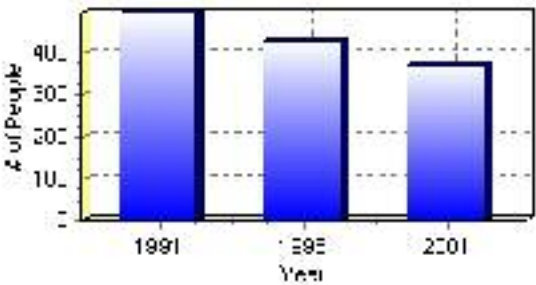
Population

Total Population

Population 2004*	372
Population 2003*	372
Population 2002*	372
Population 2001**	375
Population 2000*	427
Population 1996**	427
Population 1991**	496
Population % change 1991-1996	-16.16%
Population % change 1996-2001	-14.78%

* Source: Official Population List, Alberta Municipal Affairs
** Source: Statistics Canada 1991, 1996, & 2001 Census

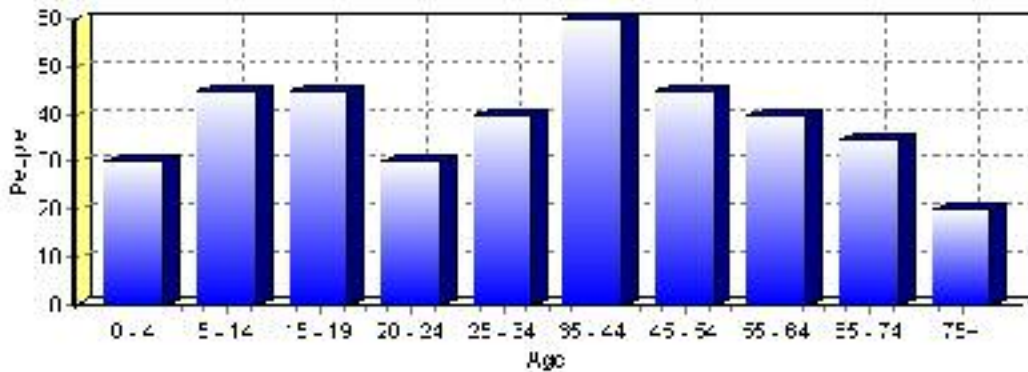
Total Population 1991-2001



Population by Age and Gender	1996 Male	1996 Female	1996 Total	2001 Male	2001 Female	2001 Total
Age 0 - 4	15	15	30	20	10	30
Age 5 - 14	40	40	80	30	15	45
Age 15 - 19	20	15	35	25	20	45
Age 20 - 24	15	15	30	15	15	30
Age 25 - 34	30	20	50	25	15	40
Age 35 - 44	35	35	70	25	35	60
Age 45 - 54	20	15	35	15	30	45
Age 55 - 64	20	20	40	20	20	40
Age 65 - 74	15	15	30	20	15	35
Age 75 and older	5	10	15	10	10	20
Total All Persons	225	200	425	190	180	370

Source: Statistics Canada 1996 & 2001 Census (numbers may not add up due to rounding)

Nampa Population by Age Group (2001)

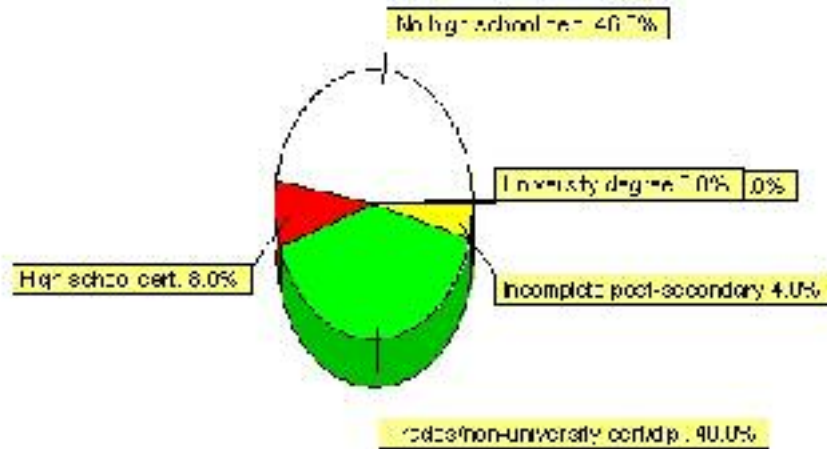


Education Statistics

Highest level of schooling for Population 20yrs and older	2001	%
People without high school certificates	115	46.00%
People with high school certificates	20	8.00%
People with trades or non-university certificate or diploma	100	40.00%
People with post-secondary education (not completed)	10	4.00%
People with university diploma/certificate	0	0.00%
People with university degree	0	0.00%
Total Population 20 years and older	250	100.00%

Source: Statistics Canada 2001 Census (numbers may not add up due to rounding)

Nampa Highest Level of Schooling 2001



Population with Post Secondary Qualifications	1996	%	2001	%
Agriculture and biological sciences	10	14.29%	10	9.52%
Commerce, management and business administration	10	14.29%	30	28.57%
Educational, recreational and counseling services	0	0.00%	10	9.52%
Engineering and applied science tech. and trades	35	50.00%	35	33.33%
Engineering and applied sciences	10	14.29%	0	0.00%
Fine and applied arts	0	0.00%	0	0.00%
Health professionals, science and technologies	15	21.43%	0	0.00%
Humanities and related fields	0	0.00%	20	19.05%
Mathematics and physical sciences	0	0.00%	0	0.00%
Social sciences and related fields	0	0.00%	0	0.00%
Other and/or no specialization	0	0.00%	0	0.00%
Total people with post secondary qualifications	70	100.00%	105	100.00%
Females with post-secondary qualifications	35	50.00%	65	61.90%
Males with post-secondary qualifications	35	50.00%	40	38.10%

Source: Statistics Canada 1996 & 2001 Census (numbers may not add up due to rounding)

Labour Force

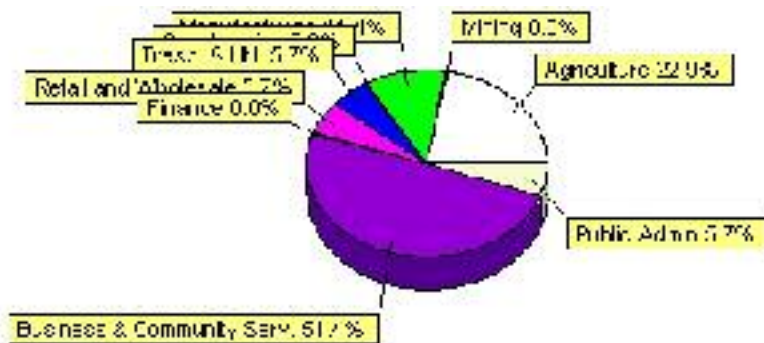
Labour force by activity	1996	2001
In the labour force, both sexes	195	175
Not in the labour force, both sexes	110	130
Total population 15 and over	305	310
Employed, both sexes	175	160
Unemployed, both sexes	20	15
Participation rate, both sexes	64.00%	57.00%
Unemployment rate, both sexes	10.00%	9.00%

Source: Statistics Canada 1996 & 2001 Census (numbers may not add up due to rounding)

Labour Force by Industry Division	1996	% of total	2001	% of total
Agriculture	20	10.53%	40	22.86%
Mining	0	0.00%	0	0.00%
Manufacturing	30	15.79%	20	11.43%
Construction	20	10.53%	0	0.00%
Transportation. & Utilities	15	7.89%	10	5.71%
Retail and Wholesale	50	26.32%	10	5.71%
Finance	10	5.26%	0	0.00%
Business & Community Services	45	23.68%	90	51.43%
Public Administration	0	0.00%	10	5.71%
Total All Industries	190	100.00%	175	100.00%

Source: Statistics Canada 1996 & 2001 Census (numbers may not add up due to rounding)

Nampa Labour Force By Industry - 2001



Labour Force by Major Occupational Groups	1996	%	2001	%
Management occupations	10	5.41%	10	5.71%
Business, Finances and administrative occupations	35	18.92%	25	14.29%
Natural and applied sciences and related occupations	0	0.00%	0	0.00%
Health occupations	0	0.00%	0	0.00%
Occupations in social science; education; government and religion	0	0.00%	10	5.71%
Occupations in art; culture; recreation and sport	0	0.00%	0	0.00%

Sales and service occupations	50	27.03%	40	22.86%
Trades; transport; equipment operators and related occupations	70	37.84%	40	22.86%
Occupations unique to primary industry	15	8.11%	25	14.29%
Occupations unique to processing; manufacturing and utilities	10	5.41%	20	11.43%
Occupations not elsewhere classified	0	0.00%	0	0.00%
Total - All Occupations (major groups)	185	100.00%	175	100.00%
Females - All Occupations	80	43.24%	75	42.86%
Males - All Occupations	105	56.76%	100	57.14%

Source: Statistics Canada 1996 & 2001 Census (numbers may not add up due to rounding)

Income

Family Income (Number of Families)	1996	%	2001	%
less than \$19,999	10	10.00%	20	26.67%
\$20,000 - \$39,999	40	40.00%	20	26.67%
\$40,000 - \$59,999	30	30.00%	10	13.33%
\$60,000 and over	20	20.00%	30	40.00%
Total number of families	100	100.00%	80	106.67%
Average family income	\$44,216		\$49,673	
Median family income	\$37,071		\$45,050	

Source: Statistics Canada 1996 & 2001 Census (numbers may not add up due to rounding)

Household Income (Number of Households)	1996	%	2001	%
less than \$19,999	65	38.24%	65	40.63%
\$20,000 - \$39,999	50	29.41%	45	28.13%
\$40,000 - \$59,999	25	14.71%	15	9.38%
\$60,000 and over	15	8.82%	45	28.13%
Total number of households	170	100.00%	160	100.00%
Average household income	\$32,317		\$37,400	
Median household income	\$25,256		\$34,406	

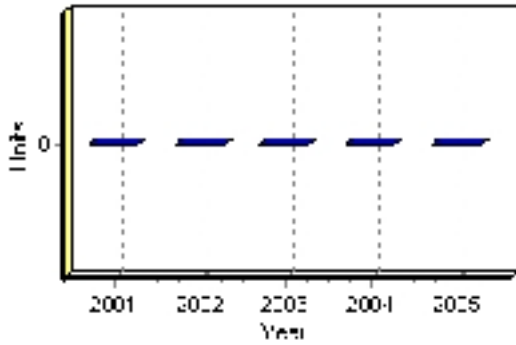
Source: Statistics Canada 1996 & 2001 Census (numbers may not add up due to rounding)

Building Permits

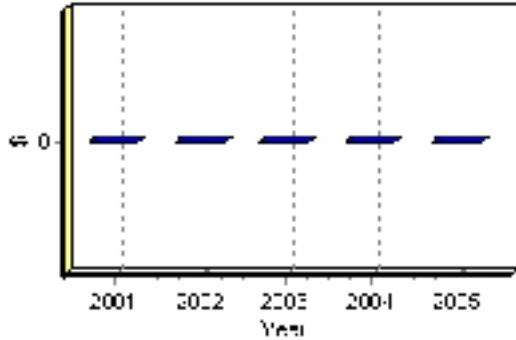
Total Building Permit Values	2001	2002	2003	2004	2005
Building Permits Value, Commercial	\$0	\$0	\$0	\$0	\$0
Building Permits Value, Industrial	\$0	\$0	\$0	\$0	\$0
Building Permits Value, Institutional	\$0	\$0	\$0	\$0	\$0
Building Permits Value, Residential	\$0	\$0	\$0	\$0	\$0
Building Permits Value, Total	\$0	\$0	\$0	\$0	\$0
Total Housing Starts	0	0	0	0	0

Source: Statistics Canada 2000-2004 Building Permits (numbers may not add up due to rounding)

Total Housing Starts



Value of Building Permits



Dwellings

Occupied Private Dwellings by Type	1996	% of total	2001	% of total
Apartments	0	0.00%	5	3.13%
Detached Duplexes	0	0.00%	0	0.00%
Movable Dwellings	50	29.41%	50	31.25%
Other single attached house	0	0.00%	0	0.00%
Row and semi-detached house	10	5.88%	10	6.25%
Single-detached house	110	64.71%	90	56.25%
Total number of occupied private dwellings	170	100.00%	160	100.00%
Private dwellings, owned	145	85.29%	105	65.63%
Private Dwellings, rented	25	14.71%	60	37.50%

Source: Statistics Canada 1996 & 2001 Census (numbers may not add up due to rounding)

Private Dwellings by Period of Construction	# of Dwellings	% of total
Period of construction, before 1946	10	5.88%
Period of construction, 1946 - 1960	30	17.65%
Period of construction, 1961 - 1970	25	14.71%
Period of construction, 1971 - 1980	70	41.18%
Period of construction, 1981 - 1990	35	20.59%
Period of construction, 1991 - 2001	0	0.00%
Total number of private dwellings constructed	170	100.00%

Source: Statistics Canada 2001 Census (numbers may not add up due to rounding)

Disclaimer: Information in this profile has been provided from a variety of external sources. Although every effort has been made to ensure the accuracy, currency and reliability of the content and data, AlbertaFirst.com Ltd. accepts no responsibility in this regard.

© AlbertaFirst.com Ltd., 2006.