

Gibbons

www.gibbons.ca

Welcome



"The Community of Choice"

It is my pleasure as Mayor of the Town of Gibbons to welcome all prospective residential, commercial and industrial development clients.

The Town of Gibbons is a friendly little town worth considering as a home for your future relocation.

Our Town offers a variety of amenities for small town living, as well as access to all the facilities of a large city within an easy, pleasurable commuting distance.

Our numerous community organizations provide many local activities for all age groups, from pre-school to senior citizens.

Gibbons offers a good variety of housing - a complimentary mixture of older and newer homes. Options for accommodation include typical single family units, duplexes, two Manufactured Housing Communities, an apartment, condominiums and an acreage development within the town.

There are several undeveloped serviced commercial properties in the downtown core of different sizes. Gibbons has three small strip malls which provide for most daily basic needs. The Town owns an eighty acre industrial development area of which twenty acres have been surveyed and sub-divided. There is no business tax in Gibbons. Property taxes are levied according to the market value of the building(s) and land.

Myself, the Council and staff welcome your inquiry and interest in the growth of our Town. Please contact us at (780) 923-3331 or email us at <mailto:gov@gibbons.ca>.

Wm. H. Nimmo
Mayor of Gibbons



Wm. H. Nimmo, Mayor

Area Overview

Gibbons offers a variety of amenities for small town living and, within an easy commuting distance to all the facilities of a large city. Gibbons is located just five minutes northeast of the corporate limits of the City of Edmonton, and approximately 30 minutes from downtown Edmonton.

The current population of Gibbons is 2,730. The community is very family oriented, with the majority of the population in the 25 to 40 age group.

Situated along the Sturgeon River, the Town is located in a beautiful natural setting. The river valley provides ample opportunities to relax and enjoy the natural beauty of the area.



"Come walk the trails in the River Valley"

In addition, the Town boasts a wide range of excellent indoor and outdoor recreational facilities.

The commercial core provides basic needs such as food, pharmaceutical, banking needs, vehicle service outlets, and other personal service requirements.

Community Services

Municipal

Town of Gibbons
P.O. Box 68
Gibbons, Alberta
T0A 1N0
Tel: 780-923-3331
Fax: 780-923-3691
email: gov@gibbons.ca

Gibbons Public Library

Box 510
Gibbons, AB
T0A 1N0

Tel: 780-923-2004
Fax: 780-923-2015
email: Gibbons Library

Provincial

- N/A

Federal

- Canada Post
780-923-2939

Community Lifestyle

Recreation

The river valley around Gibbons is fully developed with structured pathways, benches, picnic area, viewing point and an adventure playground.

Recreation facilities in town include an arena, curling rink, tennis courts, outdoor rink, ball diamonds, soccer fields, basketball courts, skateboard park, and a fishing pond that is stocked with trout annually. T

he Goose Hummock Golf Resort, a world-class 18-hole course, is located a mere 2 miles north of Gibbons.

Community Organizations

There are also over 70 volunteer community organizations ranging from the playschool group to the senior citizens club.

Special Annual Events/Attractions Facilities

- Feb – Family Day Weekend Festival – Weekend full of events celebrating families
- July 1st – Canada Day Parade & Events
- Aug – Gibbons Pioneer Days – Gibbons celebration of local history
- Sept – Gibbons Town Wide Garage Sale
- Nov – Gibbons Senior's Almost Christmas Dinner
- Nov – Gibbons Christmas Craft Sale

Hospitality/Accommodations

- Gibbons Hotel and Tavern

Restaurants

- Gibbons Cafe
- Sal's Famous Steak House & Pizza
- Lee's Chinese Restaurant
- Subway
- The Pizza Place

Religious Facilities



Alliance Church



Anglican Church



Sacred Heart Parish



United Church

Economic Base

Gibbons is mainly a residential community with basic service required for daily living. The majority of residents commute to work in Edmonton, Fort Saskatchewan or the surrounding industrial areas.

Economic Facts

Degussa Canada's Hydrogen Peroxide plant is located six miles east of Gibbons.

Agrium Redwater Plant is located ten miles east of Gibbons. Agrium is the largest fertilizer producer in Canada. The Redwater Plant ships fertilizer within Canada. The Northwestern United States and some off shore destinations.

Major Businesses - Products/Services

- Degussa Canada - Hydrogen Peroxide Plant
- Agrium-Redwater Fertilizer Operations - Fertilizer
- Finora Canada - Seed Cleaning
- Cheyenne Rig Repair & Supply Ltd. - Oilfield Manufacturing
- Gibbons Motor Toys - Marine, Snowmobile & ATV Sales & Service

Financial Institutions

- Capital City Savings & Credit Union Ltd.
- Gibbons ATB

Education

Gibbons is part of the Sturgeon School Division #24, headquartered in Morinville tel: 780-939-4341.

Public

Schools in Gibbons include Landing Trail providing education for kindergarten to grade four and Gibbons School serving children in grades five to nine. Senior high school students are bussed to Sturgeon Composite High School [10-12], located in Namao or Redwater High School in Redwater. Gibbons is also the home of the Sturgeon Learning Centre, an alternative high school individualized, adult learning format.

Separate

- N/A

Private

- N/A

Emergency Services

Fire Protection (911)

Gibbons Fire Department (Non Emergency) Telephone: 780-923-2775

Gibbons is served by a 33-member volunteer fire department. The department provides excellent fire protection and emergency response to the residents in Gibbons and surrounding area. They operate two fire trucks, each equipped with a 625 G.P.M. Pumper and an Emergency Rescue Unit which contains the Jaws of Life as well as medical assistance equipment.

Police Services (911)

Gibbons is served by the Morinville detachment [tel: 780-923-3320]. The Town also has Special Constables, Animal Control Officer and Citizens on Patrol to enforce Town bylaws and specific Provincial Statutes.

Ambulance Services (911)

Bon Accord/Gibbons Ambulance Service provides contract BLS (Basic Life Support) with contract agreements with ALS (Advanced Life Support) Intercept.



Bon Accord/Gibbons Ambulance Service and Stars on Scene

Health Care

Medical facilities consist of one medical clinic, a dental office, laboratory, chiropractic centre, massage therapy and a **Capital Health Unit**. Three hospitals are available with 15 miles of Gibbons.

Spruce View Manor, the Seniors Lodge, has the capacity to house 44 residents, while Pinecrest Gardens contains 18 self contained apartments.

Key Contacts for Business Development

Municipal

Town of Gibbons
P.O. Box 68
Gibbons, Alberta
T0A 1N0
Tel: 780-923-3331
Fax: 780-923-3691
email: gov@gibbons.ca

Wm. H. Nimmo,
Mayor
email: gov@gibbons.ca

Maisie Metrunec
Town Manager
email: mmetrunc@gibbons.ca

Cindy Osborne,
Development Officer
email: cosborne@gibbons.ca

Marg Clark,
Community Services Director
email: mclark@gibbons.ca

Provincial

Mike Cardinal,
Member of the Legislative Assembly [MLA]
Athabasca/Redwater Constituency
324 Legislature Building
10800 - 97 Avenue
Edmonton, Alberta
T5K 1B6
Tel: 780-415-4800

Fax: 780-422-9556
email: donna.ballard@gov.ab.ca

Federal

Brian Storseth,
Member of Parliament [MP]
10623 - 100 Avenue, Suite B
Westlock, Alberta
T7P 2J4
Tel: (780) 349-8333
Fax: (780) 349-8340
Toll Free in Alberta: 1-800-667-8450
email: storsb1@parl.gc.ca

Location

WHERE ARE WE?



Altitude of Gibbons: 2155 feet A.S.C. Latitude of Gibbons: 53.50 N Longitude of Gibbons: 113.20 W

The Town of Gibbons is located in the Sturgeon County, just north of Edmonton, Alberta at the junction of Highway 28 and Highway 28A. Gibbons is within easy commuting distance to Edmonton and Fort Saskatchewan as well as several industrial areas in the surrounding rural area.

Post Secondary Education

Gibbons is an easy commute to Edmonton with post-secondary education institutions such as [The University of Alberta](#), [Grant MacEwan Community College](#), [Northern Alberta Institute of Technology \[NAIT\]](#) and [Athabasca University](#)

Taxation

	<u>Res./Farm</u>	<u>Non-Res</u>
2005		
Municipal Tax Rate	8.5150	14.0150
Education - Alberta School Foundation Fund Tax Rate	4.0120	7.2740
Allowance for Non-Collection of Requisitioned Taxes	.1160	.1160
Seniors Lodge Accommodation Tax Rate	.0860	.0860

2005 Mill Rates

Residential - Public 12.729
Residential - Separate N/A
Non-Residential - Public 21.491
Non-Residential - Separate N/A

Transportation

Air Service

Commercial and air freight service is available from Edmonton International Airport.

Rail Service

Canadian National Railways connects Gibbons with the Grand Centre - Cold Lake area.

Highways

Highways 28, 28A and 15 provide Gibbons with access to Edmonton or Fort Saskatchewan. The northward extension of Highway 28 connects Gibbons with Redwater, Smoky Lake, Bonnyville, Grand Centre and Cold Lake. Highways 46 and 63 provide access into Boyle and Fort McMurray.

Trucking Firms

Gibbons is served by regional and national trucking firms from Edmonton.

Bus Services

Greyhound Bus Lines provides regularly scheduled inter-community service.

Couriers and Taxis

Gibbons is served by all major companies from Edmonton.

Utilities

Electrical/Power

Epcor (Electricity/gas)

Tel: 310-4300

Natural Gas

ATCO Gas

Tel: 780-310-5678

Telephone

Telus

Tel: 780-310-2255

Water Supply

Gibbons receives its water supply from Edmonton, giving the system the capability of meeting the requirements of a population of over 10,000 persons.

Waste Management

Gibbons is tied into the Regional Sewage Treatment facility, which will meet the Town's requirements for the distant future.

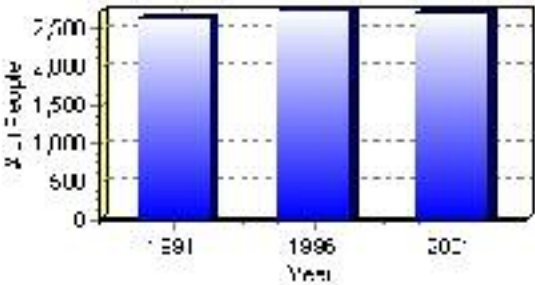
Population

Total Population

Population 2004*	2,730
Population 2003*	2,730
Population 2002*	2,730
Population 2001**	2,655
Population 2000*	2,748
Population 1996**	2,748
Population 1991**	2,639
Population % change 1991-1996	3.97%
Population % change 1996-2001	-0.66%

* Source: Official Population List, Alberta Municipal Affairs
** Source: Statistics Canada 1991, 1996, & 2001 Census

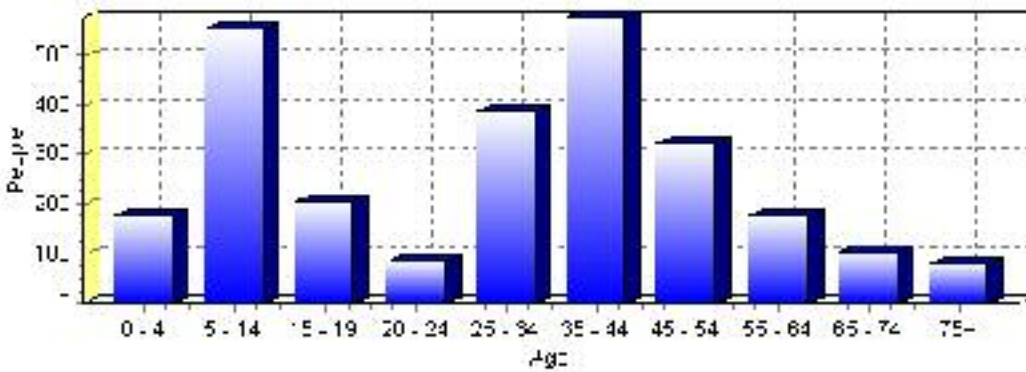
Total Population 1991-2001



Population by Age and Gender	1996 Male	1996 Female	1996 Total	2001 Male	2001 Female	2001 Total
Age 0 - 4	135	120	255	95	80	175
Age 5 - 14	275	275	550	270	280	550
Age 15 - 19	125	120	245	100	105	205
Age 20 - 24	70	60	130	45	40	85
Age 25 - 34	200	250	450	180	205	385
Age 35 - 44	295	255	550	300	275	575
Age 45 - 54	140	125	265	160	160	320
Age 55 - 64	75	70	145	90	85	175
Age 65 - 74	45	40	85	50	55	105
Age 75 and older	25	45	70	30	50	80
Total All Persons	1,385	1,365	2,750	1,330	1,325	2,655

Source: Statistics Canada 1996 & 2001 Census (numbers may not add up due to rounding)

Gibbons Population by Age Group (2001)

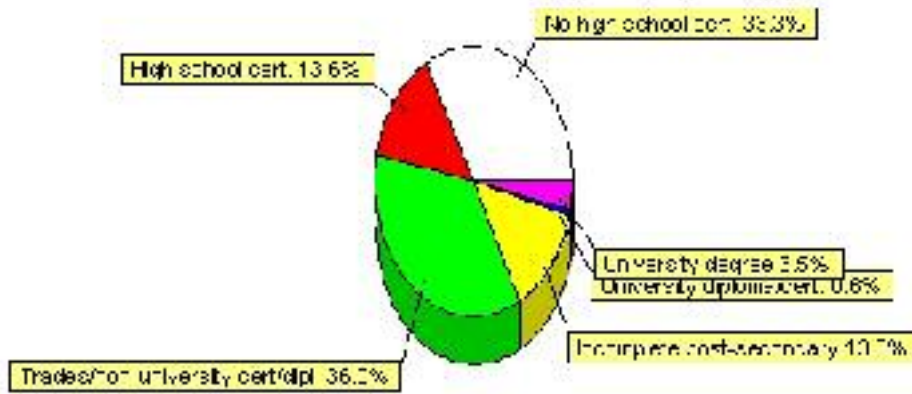


Education Statistics

Highest level of schooling for Population 20yrs and older	2001	%
People without high school certificates	565	33.33%
People with high school certificates	230	13.57%
People with trades or non-university certificate or diploma	610	35.99%
People with post-secondary education (not completed)	225	13.27%
People with university diploma/certificate	10	0.59%
People with university degree	60	3.54%
Total Population 20 years and older	1,695	100.00%

Source: Statistics Canada 2001 Census (numbers may not add up due to rounding)

Gibbons Highest Level of Schooling 2001



Population with Post Secondary Qualifications	1996	%	2001	%
Agriculture and biological sciences	20	2.94%	25	3.68%
Commerce, management and business administration	190	27.94%	120	17.65%
Educational, recreational and counseling services	50	7.35%	80	11.76%
Engineering and applied science tech. and trades	250	36.76%	305	44.85%
Engineering and applied sciences	10	1.47%	0	0.00%
Fine and applied arts	30	4.41%	25	3.68%
Health professionals, science and technologies	75	11.03%	55	8.09%
Humanities and related fields	30	4.41%	10	1.47%
Mathematics and physical sciences	20	2.94%	0	0.00%
Social sciences and related fields	10	1.47%	45	6.62%
Other and/or no specialization	0	0.00%	0	0.00%
Total people with post secondary qualifications	680	100.00%	680	100.00%
Females with post-secondary qualifications	305	44.85%	295	43.38%
Males with post-secondary qualifications	375	55.15%	385	56.62%

Source: Statistics Canada 1996 & 2001 Census (numbers may not add up due to rounding)

Labour Force

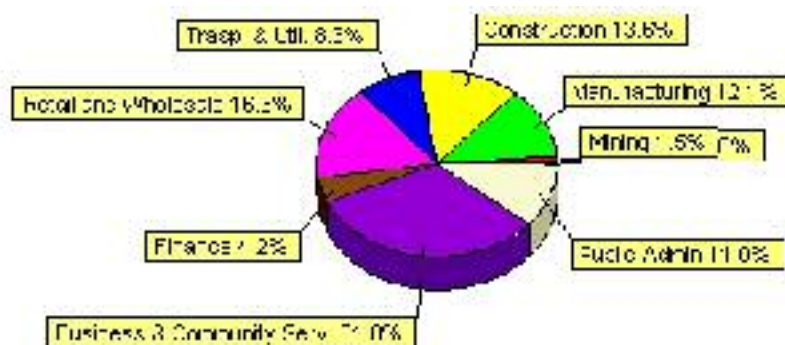
Labour force by activity	1996	2001
In the labour force, both sexes	1,450	1,330
Not in the labour force, both sexes	460	580
Total population 15 and over	1,915	1,910
Employed, both sexes	1,350	1,275
Unemployed, both sexes	105	55
Participation rate, both sexes	75.00%	70.00%
Unemployment rate, both sexes	7.00%	4.00%

Source: Statistics Canada 1996 & 2001 Census (numbers may not add up due to rounding)

Labour Force by Industry Division	1996	% of total	2001	% of total
Agriculture	55	3.82%	0	0.00%
Mining	40	2.78%	20	1.52%
Manufacturing	190	13.19%	160	12.12%
Construction	80	5.56%	180	13.64%
Transportation. & Utilities	220	15.28%	110	8.33%
Retail and Wholesale	300	20.83%	215	16.29%
Finance	65	4.51%	55	4.17%
Business & Community Services	415	28.82%	420	31.82%
Public Administration	90	6.25%	145	10.98%
Total All Industries	1,440	100.00%	1,320	100.00%

Source: Statistics Canada 1996 & 2001 Census (numbers may not add up due to rounding)

Gibbons Labour Force By Industry - 2001



Labour Force by Major Occupational Groups	1996	%	2001	%
Management occupations	110	7.61%	60	4.56%
Business, Finances and administrative occupations	285	19.72%	220	16.73%
Natural and applied sciences and related occupations	70	4.84%	40	3.04%
Health occupations	10	0.69%	40	3.04%
Occupations in social science; education; government and religion	40	2.77%	65	4.94%
Occupations in art; culture; recreation and sport	15	1.04%	0	0.00%

Sales and service occupations	400	27.68%	375	28.52%
Trades; transport; equipment operators and related occupations	355	24.57%	410	31.18%
Occupations unique to primary industry	80	5.54%	25	1.90%
Occupations unique to processing; manufacturing and utilities	75	5.19%	75	5.70%
Occupations not elsewhere classified	10	0.69%	20	1.52%
Total - All Occupations (major groups)	1,445	100.00%	1,315	100.00%
Females - All Occupations	620	42.91%	565	42.97%
Males - All Occupations	825	57.09%	750	57.03%

Source: Statistics Canada 1996 & 2001 Census (numbers may not add up due to rounding)

Income

Family Income (Number of Families)	1996	%	2001	%
less than \$19,999	20	3.05%	70	12.84%
\$20,000 - \$39,999	190	29.01%	140	25.69%
\$40,000 - \$59,999	185	28.24%	200	36.70%
\$60,000 and over	260	39.69%	200	36.70%
Total number of families	655	100.00%	610	111.93%
Average family income	\$53,954		\$58,160	
Median family income	\$54,397		\$53,546	

Source: Statistics Canada 1996 & 2001 Census (numbers may not add up due to rounding)

Household Income (Number of Households)	1996	%	2001	%
less than \$19,999	70	8.09%	130	14.44%
\$20,000 - \$39,999	260	30.06%	155	17.22%
\$40,000 - \$59,999	235	27.17%	255	28.33%
\$60,000 and over	120	13.87%	365	40.56%
Total number of households	865	100.00%	900	100.00%
Average household income	\$49,723		\$55,085	
Median household income	\$49,603		\$51,112	

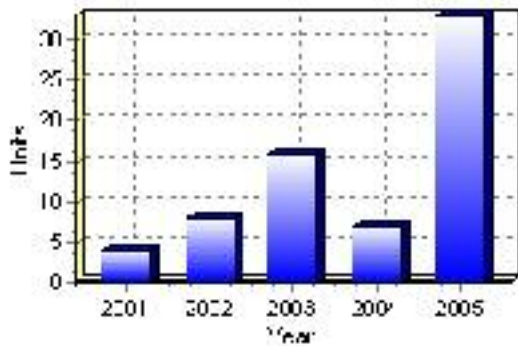
Source: Statistics Canada 1996 & 2001 Census (numbers may not add up due to rounding)

Building Permits

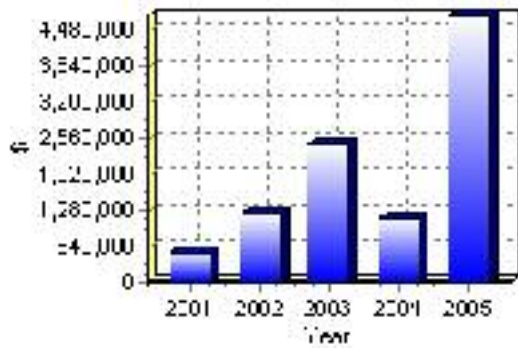
Total Building Permit Values	2001	2002	2003	2004	2005
Building Permits Value, Commercial	\$0	\$0	\$90,000	\$0	\$0
Building Permits Value, Industrial	\$0	\$0	\$0	\$0	\$0
Building Permits Value, Institutional	\$0	\$148,000	\$0	\$0	\$0
Building Permits Value, Residential	\$518,000	\$1,045,000	\$2,362,000	\$1,137,000	\$4,711,000
Building Permits Value, Total	\$518,000	\$1,193,000	\$2,452,000	\$1,137,000	\$4,711,000
Total Housing Starts	4	8	16	7	33

Source: Statistics Canada 2000-2004 Building Permits (numbers may not add up due to rounding)

Total Housing Starts



Value of Building Permits



Dwellings

Occupied Private Dwellings by Type	1996	% of total	2001	% of total
Apartments	25	2.89%	35	3.89%
Detached Duplexes	0	0.00%	0	0.00%
Movable Dwellings	35	4.05%	55	6.11%
Other single attached house	0	0.00%	0	0.00%
Row and semi-detached house	20	2.31%	10	1.11%
Single-detached house	790	91.33%	790	87.78%
Total number of occupied private dwellings	865	100.00%	900	100.00%
Private dwellings, owned	745	86.13%	810	90.00%
Private Dwellings, rented	120	13.87%	90	10.00%

Source: Statistics Canada 1996 & 2001 Census (numbers may not add up due to rounding)

Private Dwellings by Period of Construction	# of Dwellings	% of total
Period of construction, before 1946	25	2.79%
Period of construction, 1946 - 1960	40	4.47%
Period of construction, 1961 - 1970	35	3.91%
Period of construction, 1971 - 1980	500	55.87%
Period of construction, 1981 - 1990	230	25.70%
Period of construction, 1991 - 2001	65	7.26%
Total number of private dwellings constructed	895	100.00%

Source: Statistics Canada 2001 Census (numbers may not add up due to rounding)

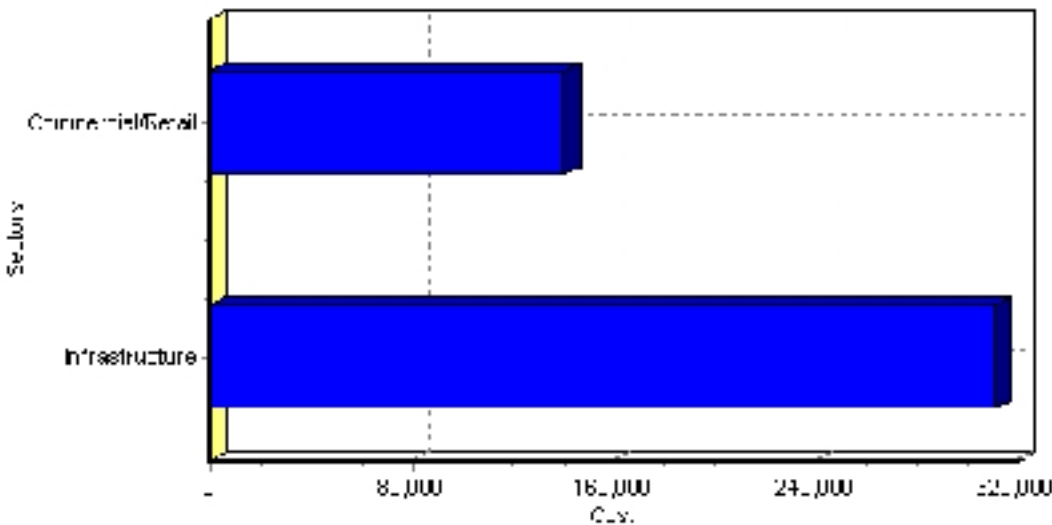
Projects

Summary of Projects in Gibbons as of September 2006

Project Sector	Number of Projects	Project Cost
Infrastructure	1	\$310,883
Commercial/Retail	1	\$140,000
Total	2	\$450,883

This inventory lists projects in Alberta that have recently been completed, are under construction, or are proposed to start construction. Not all projects are listed due to reasons of confidentiality and/or due to information not being available at the time of printing. Project data is obtained from public information sources, where possible, this data has been verified with the project proponent/developer, users of the Inventory may wish to confirm project data with the proponent/developer. The inventory does not breakdown project expenditures by any given year. The cost of a project is the value of expenditures expected over all phases of project construction, which may span over two or more years. Cost of projects listed in the Inventory are estimated values only. Source: Alberta Economic Development, 2004.

Value of Projects by Sector (as of September 2006)



Project Status	Number of Projects	Project Cost
Under Construction	2	\$450,883
Total	2	\$450,883

This inventory lists projects in Alberta that have recently been completed, are under construction, or are proposed to start construction. Not all projects are listed due to reasons of confidentiality and/or due to information not being available at the time of printing. Project data is obtained from public information sources, where possible, this data has been verified with the project proponent/developer, users of the Inventory may wish to confirm project data with the proponent/developer. The inventory does not breakdown project expenditures by any given year. The cost of a project is the value of expenditures expected over all phases of project construction, which may span over two or more years. Cost of projects listed in the Inventory are estimated values only. Source: Alberta Economic Development, 2004.

Largest Projects in Gibbons as of September 2006

Company Name	Project Description	Project Location	Project Cost	Construction Schedule	Status
Town of Gibbons/Ohanlon	RESURFACING & PAVING	Gibbons	\$310,883	2006-2006	Under Construction
Rob's Place	LIGHT INDUSTRIAL	Gibbons	\$140,000	2006-2006	Under Construction

Disclaimer: Information in this profile has been provided from a variety of external sources. Although every effort has been made to ensure the accuracy, currency and reliability of the content and data, AlbertaFirst.com Ltd. accepts no responsibility in this regard.

© AlbertaFirst.com Ltd., 2006.