

Berwyn

<http://www.berwyn.govoffice.com>

Welcome

It is my pleasure, on behalf of the Municipal Council, to welcome you to the Village of Berwyn.

Berwyn is a progressive community centrally situated to serve a large and productive agricultural area. The village is served by a primary highway, which connects to other major routes within a few miles of the village. In addition, the Peace River Municipal Airport is within one half hour's drive from the village. Berwyn is, therefore, ideally suited for industrial and commercial economic growth.

The Council of the village, in co-operation with the Berwyn and District Chamber of Commerce, actively promotes the village as a spot to locate, either for business or residence. The Council of the village is proud of the community and its accomplishments, which include a substantial improvement in the "quality of life", most notably in the recreational area.

Again, welcome to the Village of Berwyn. I hope that you will enjoy your stay in our village, whatever the length and for whatever the purpose.

May Rowe
Mayor of Berwyn

Area Overview

The Village of Berwyn can be found nestled within the Peace River Region of northwestern Alberta. The region is noted for its long daylight hours in summer-time and friendly people. Because of the long summer days and good soil, the Peace Country is able to produce high quality agricultural crops. Other resource-related industries that are important to the region include forestry and the oil and gas companies.

After being surveyed for homesteads in 1910, the settlement was given the name Berwyn in 1922 after the village of Berwyn in Denbigshire, Wales. In 1936, Berwyn was incorporated as a village and has maintained this status ever since.

Community Services

Municipal

Village of Berwyn
P.O. Box 250
Berwyn, Alberta
T0H 0E0
Tel: 780-338-3922
Fax: 780-338-2224
Email: vberwyn@telusplanet.net
Website: www.berwyn.govoffice.com

Town Office
Village Recreation Board
Berwyn Women's Institute Municipal Library

Planning Services

Mackenzie Municipal Services Agency
Box 450
Berwyn AB T0H 0E0
Tel: 780-338-3862
Fax: 780-338-3811
E-mail: mmsa@ccinet.ab.ca
Website: www.mmsa.ca

Federal

Canada Post Office

Community Lifestyle

Recreation

Local recreation facilities include the Tower Park Recreational Area [camping stalls, picnic area, trailer dumping station, 3 baseball diamonds, 2 tennis courts and cross-country ski-trails], Queen Elizabeth Provincial Park, playgrounds, Berwyn Arena [skating, hockey, meeting facilities], Berwyn Elks Hall and the Legion Hall.

Community Organizations

Local organizations and clubs include the Alleycats [skipping club], Agricultural Society, Arts & Crafts Club, Catholic Womens' League, Chamber of Commerce, Golden Age Club [for seniors], Berwyn/Grimshaw Further Education, Minor Sports, Women's Institute, Block Parents, B.P.O. Elks, Lakewood Equestrian Centre, Legion Ladies Auxiliary, Northern Lights Dance Group, North Peace Stampede Association, Royal Canadian Legion, Royal Purple Ladies and 4-H Clubs.

Religious Services

- Bissel Memorial United Church
- Christ Church Anglican
- St. Cecilia's Catholic Church
- Salvation Army

Special Annual Events/Attractions

Special Events:

- North Peace Stampede - Lac Cardinal [3-day rodeo, midway and stampede] - 1st weekend in August
- Berwyn Fiesta Day and Street Dance
- Women's Institute Annual Flower Show
- Volunteer Week Celebrations
- Arbour Day/National Forest Week
- Canada Fit Week
- Berwyn Agricultural Society Bench Show & Fair
- Canada Day Celebrations
- Terry Fox Run
- Oktoberfest
- Boxing Day Dine & Dance
- Berwyn Farmers Markets

Hospitality/Accommodation

- Berwyn Hotel

Economic Base

Berwyn depends primarily on agriculture for its economic base. Major crops are wheat, barley, canola and oats.

Economic Facts

In the area surrounding Berwyn, agricultural production has flourished. With an average of 93 frost free days and 2,060 hours of sunshine every year, the climate is fitting for farming. With good soil and reasonable land rental prices, it is expected that farming in this area of Alberta will continue to be prosperous.

Major Businesses

- Heavy Equipment Contractors
- Retailers
- Automotive Dealer
- Many Home Based Businesses
- Trucking

Financial Institutions

- Alberta Treasury Branch

Education

Berwyn is part of the Peace River School Division #10, headquartered in Peace River [Tel: 780-624-3601].

Public

Schools in Berwyn include the Berwyn Kindergarten and The Lloyd Garrison School [1-9].

Separate

A Roman Catholic school is located in Grimshaw, 11 km away. Separate school students are bussed from Berwyn to Grimshaw.

Daycare/Nursery

The Berwyn Playschool offers sessions for three and four year olds.

Emergency Services

Fire Protection

The village operates a fire hall, and protection is provided by a 10-member volunteer fire department with two vehicles [Tel: 911].

Police Services

Berwyn is served by the Royal Canadian Mounted Police, Grimshaw Detachment [Tel: 780-332-4666]. Berwyn's citizens on Patrol also offer volunteer police patrols on a regular basis. Both Block Parent and Neighbourhood Watch programs are also in operation

to ensure that Berwyn is a safe community to live in.

Ambulance Services

The Peace Regional Emergency Medical Services (PREMS) provides ground ambulance services to Berwyn. Advanced Life Flight provides air ambulance services to Berwyn. Ambulance Services can be accessed by dialing 911.

Health Care

Berwyn is in the Peace Country Health Region. The Peace River Community Health Centre has 30 acute care beds. The Grimshaw Berwyn & District Community Health Centre has emergency (24 hour), laboratory, radiology services, including long term continuing care beds. There is a seniors lodge and self-contained units at Berwyn.

The Peace River Health Unit is available at the Village Office on the fourth Wednesday of each month for general immunization [Tel: 780-624-3611].

Senior citizen facilities include the Autumn Lodge [50 bed senior citizens' home], and the Autumn Villa [8 senior citizens' self-contained units].

Key Contacts for Business Development

Municipal

Village of Berwyn
P.O. Box 250
Berwyn, Alberta
T0H 0E0
Tel: 780-338-3922
Fax: 780-338-2224
Email: vberwyn@telusplanet.net
Website: www.berwyn.govoffice.com

May Rowe
Mayor

Harry Aspin
Administrator

Economic Development

Lac Cardinal Regional Economic Development Board
Box 377
Grimshaw, Alberta
T0H 1W0
Tel: 780-332-1169
Fax: 780-332-1178
Email: lcred@telusplanet.net
Website: www.lcredb-ecdev.com

Brian Allen
Chairman

Provincial

Michael Cheeks, Manager
Alberta Economic Development
Postal Bag 900 - 3
105 Provincial Building
9626 - 96 Avenue
Peace River, Alberta
T8S 1T4
Tel: 780-624-6114
Fax: 403-624-6490
Email: michael.cheeks@gov.ab.ca

Bob Hall, Regional Manager
Alberta Economic Development
1401 Provincial Building
10320 - 99 Street
Grande Prairie AB T8V 6J4
Tel: 780-538-5230
Fax: 780-538-5332
Email: bob.hall@gov.ab.ca.net

Hector Goudreau
Member of the Legislative Assembly [MLA]
Dunvegan-Central Peace Constituency
513 Legislature Building
10800 - 97 Avenue
Edmonton, Alberta
T5K 2B6
Tel: 780-415-9421
Fax: 780-427-1835

Constituency Office
P.O. Box 1054
031- 1st Avenue SW
Falher AB
T0H 1M0
Tel: 780-837-3846
Toll Free: 1-866-835-4988
Fax: 780-837-3849

Federal

WARKENTIN, Chris (Conservative)
MP- Peace River, Alberta
Room 413, Justice Building
House of Commons
Ottawa, Ontario
K1A 0A6
Telephone: (613) 992-5685
Fax: (613) 947-4782
E-Mail: Warkentin.C@parl.gc.ca

Constituency Address
207 - 10605 West Side Drive
Grande Prairie, Alberta

T8V 8E6
Telephone: (780) 538-1677
Fax: (780) 538-9257
Email: warkec1@parl.gc.ca

Location

The Village of Berwyn is located in the Municipal District of Peace River #135, adjacent to Highway 2. It is only 37 km from the Town of Peace River.

Post Secondary Education

Grande Prairie Regional College is located 174 km south of Grimshaw in Grande Prairie. Fairview College (Fairview, Alberta) is located 45 km west and its Peace River Campus is located 22 km east.

A number of post-secondary education opportunities are available in the Town of Peace River. Fairview College has a facility in Peace River which offers numerous post-secondary and upgrading programs. Several of Alberta's universities offer credit courses in the region through various delivery modes, including teleconferencing. The University of Calgary, and Athabasca University offer a wide range of courses to meet the interests of Peace Region residents.

Taxation

Mill Rates [2006]

- Residential - 30.0
- Non-Residential - 32.218

	<u>Residential/Farmland</u>	<u>Non-Residential</u>
2005		
Municipal Tax Rate	25.5037	25.5037
Education - Alberta School Foundation Fund Tax Rate	4.7233	7.0386
Education Opted Out Tax Rate	4.7233	7.0386
Seniors Lodge Accommodation Tax Rate	.2730	.2730

Transportation

Air Services

Peace Air offers scheduled flights to Edmonton, Calgary, and a number of other centres in Alberta and British Columbia, and also offer charter service. Budget, Avis and Tilden vehicle rentals are available at the airport.

Local charter services are provided by: Northern Air Charter [P.R.] Inc. [Tel: 780-624-1911]; Highland Helicopters Ltd. [Tel: 780-624-5555]; Peace Air Ltd. [Tel: 780-624-3060]; and Ultra Helicopters Ltd. [780-332-2995]. Grimshaw has a grass strip, which is only open in the summer months.

Highways

The main connecting highway is Highway 2, leading west to Fairview and east to Grimshaw and Peace River.

Trucking Firms

- Grimshaw Trucking and Distributing Ltd.
- K & F Trucking Ltd.
- Lorette Truck Service Ltd.
- Mullen Trucking Ltd.
- Wald Brothers Trucking 2000 Ltd.
- Rainbow Transport

Bus Services

Greyhound Bus lines provides regularly scheduled inter-community passenger and freight service. Berwyn Pharmacy Ltd. on Main Street in Berwyn acts as an agent for Greyhound Canada.

Charter bus lines include Cardinal Coach Lines Ltd., Peace Country Tours Inc. and Town & Country Bus Tours in Peace River.

Couriers and Taxis

Greyhound Courier Express and other companies in Peace River serve Berwyn. They include Loomis, Grande Prairie Express, and Purolator. Purolator also has a drop off point in Grimshaw at Beyond 2000.

Utilities

Electrical Power

Atco Electric Ltd.
P.O. Box 2429
Edmonton, Alberta
T5J 4M7
Tel: 1-800-668-2248

Alberta Power Ltd. provides the village with residential single-phase and 3-phase commercial services.

Natural Gas

Atco Gas
10035 - 105 Street
Edmonton, Alberta
T5J 2V6
Tel: 1-888-511-7550

Natural gas is the principle source of heating in Berwyn.

Telephone

Telus Communications
P.O. Box 2422
Edmonton, Alberta
T5J 2S7
Tel: 310-2255

Water Supply

Berwyn obtains its water supply from a municipal reservoir and three community wells. Water is treated with chlorine and is distributed throughout the village by a piped system. The reservoir has a capacity of approximately 200,000 gallons. The monthly

water rate for Residential is \$19.00, Reduced Residential Rate (guaranteed income supplement, widow or disability pension) is \$15.00, Commercial \$22.00, Institutional \$26.00, Unoccupied/infrequently occupied residences \$15.00.

Waste Management

Sewage is collected via a piped system. Sewage is disposed of in municipal lagoons and is treated by organic means. The lagoons have a holding capacity of 30 million gallons. The monthly sewer rate for Residential is \$15.00, Reduced Residential Rate (guaranteed income supplement, widow or disability pension) is \$7.00, Commercial \$18.00, Institutional \$66.00, Unoccupied/infrequently occupied residences \$10.00.

Household garbage is collected once a week, while commercial collection occurs anywhere from once to three times a week depending on need. Then municipal waste is disposed of at the Long Lake Regional Landfill site. Residents may haul their larger items to either the transfer site at Grimshaw or to the main site at Long Lake. The residential monthly rate for waste disposal is \$13.00, Institutional (Schools) \$18.00. There is also a monthly fee for all classifications of \$1.00 for recycling.

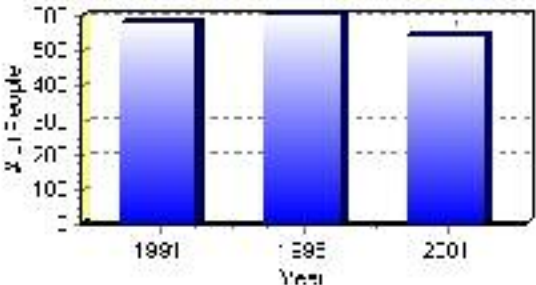
Population

Total Population

Population 2004*	546
Population 2003*	546
Population 2002*	546
Population 2001**	545
Population 2000*	606
Population 1996**	606
Population 1991**	581
Population % change 1991-1996	4.13%
Population % change 1996-2001	-10.99%

* Source: Official Population List, Alberta Municipal Affairs
** Source: Statistics Canada 1991, 1996, & 2001 Census

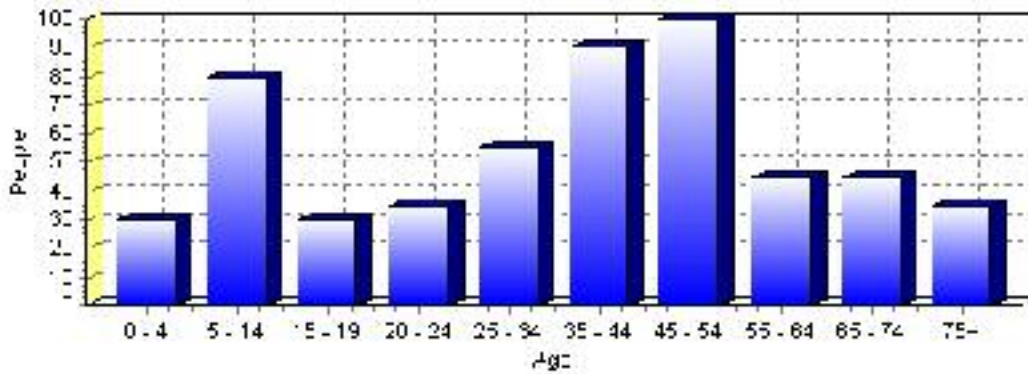
Total Population 1991-2001



Population by Age and Gender	1996 Male	1996 Female	1996 Total	2001 Male	2001 Female	2001 Total
Age 0 - 4	30	25	55	20	10	30
Age 5 - 14	65	35	100	45	35	80
Age 15 - 19	25	25	50	15	15	30
Age 20 - 24	15	15	30	20	15	35
Age 25 - 34	50	50	100	30	25	55
Age 35 - 44	40	50	90	40	50	90
Age 45 - 54	45	20	65	50	50	100
Age 55 - 64	30	15	45	30	15	45
Age 65 - 74	15	15	30	25	20	45
Age 75 and older	15	20	35	15	20	35
Total All Persons	320	285	605	285	260	545

Source: Statistics Canada 1996 & 2001 Census (numbers may not add up due to rounding)

Berwyn Population by Age Group (2001)

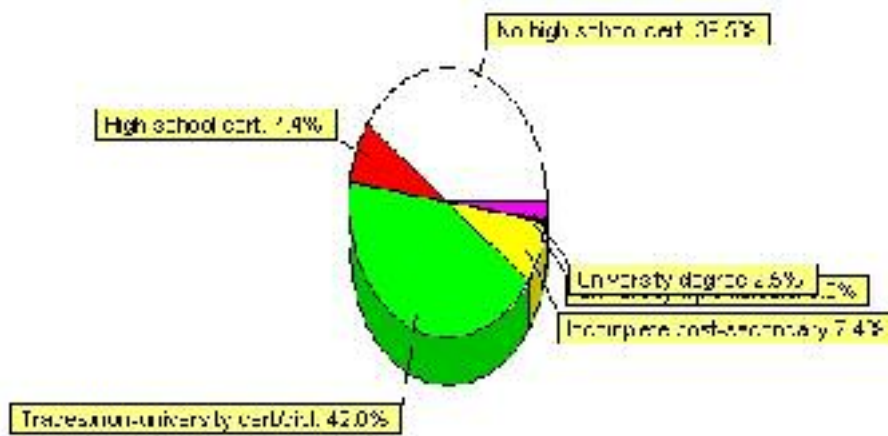


Education Statistics

Highest level of schooling for Population 20yrs and older	2001	%
People without high school certificates	160	39.51%
People with high school certificates	30	7.41%
People with trades or non-university certificate or diploma	170	41.98%
People with post-secondary education (not completed)	30	7.41%
People with university diploma/certificate	0	0.00%
People with university degree	10	2.47%
Total Population 20 years and older	405	100.00%

Source: Statistics Canada 2001 Census (numbers may not add up due to rounding)

Berwyn Highest Level of Schooling 2001



Population with Post Secondary Qualifications	1996	%	2001	%
Agriculture and biological sciences	0	0.00%	0	0.00%
Commerce, management and business administration	20	21.05%	20	10.81%
Educational, recreational and counseling services	10	10.53%	50	27.03%
Engineering and applied science tech. and trades	45	47.37%	75	40.54%
Engineering and applied sciences	0	0.00%	0	0.00%
Fine and applied arts	0	0.00%	0	0.00%
Health professionals, science and technologies	0	0.00%	10	5.41%
Humanities and related fields	0	0.00%	0	0.00%
Mathematics and physical sciences	0	0.00%	0	0.00%
Social sciences and related fields	0	0.00%	20	10.81%
Other and/or no specialization	0	0.00%	0	0.00%
Total people with post secondary qualifications	95	100.00%	185	100.00%
Females with post-secondary qualifications	35	36.84%	90	48.65%
Males with post-secondary qualifications	60	63.16%	95	51.35%

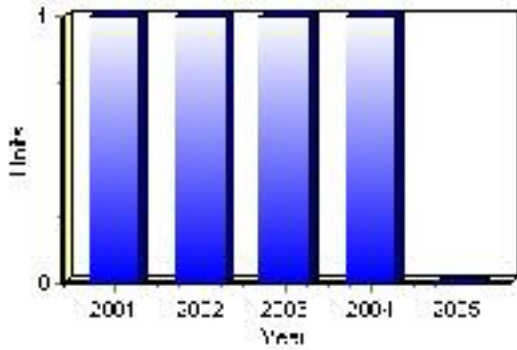
Source: Statistics Canada 1996 & 2001 Census (numbers may not add up due to rounding)

Building Permits

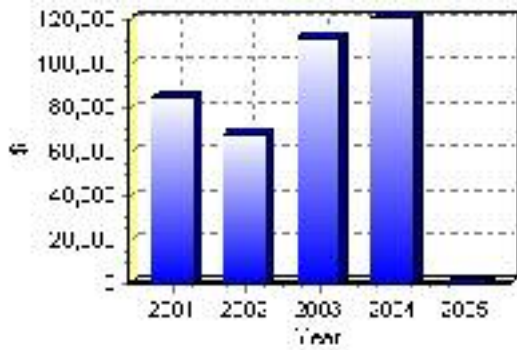
Total Building Permit Values	2001	2002	2003	2004	2005
Building Permits Value, Commercial	\$0	\$10,000	\$0	\$0	\$0
Building Permits Value, Industrial	\$12,000	\$0	\$30,000	\$0	\$0
Building Permits Value, Institutional	\$0	\$0	\$0	\$0	\$0
Building Permits Value, Residential	\$73,000	\$58,000	\$82,000	\$121,000	\$0
Building Permits Value, Total	\$85,000	\$68,000	\$112,000	\$121,000	\$0
Total Housing Starts	1	1	1	1	0

Source: Statistics Canada 2000-2004 Building Permits (numbers may not add up due to rounding)

Total Housing Starts



Value of Building Permits



Dwellings

Occupied Private Dwellings by Type	1996	% of total	2001	% of total
Apartments	0	0.00%	0	0.00%
Detached Duplexes	0	0.00%	0	0.00%
Movable Dwellings	0	0.00%	5	2.22%
Other single attached house	0	0.00%	5	2.22%
Row and semi-detached house	10	4.44%	0	0.00%
Single-detached house	220	97.78%	215	95.56%
Total number of occupied private dwellings	225	100.00%	225	100.00%
Private dwellings, owned	185	82.22%	185	82.22%
Private Dwellings, rented	40	17.78%	45	20.00%

Source: Statistics Canada 1996 & 2001 Census (numbers may not add up due to rounding)

Private Dwellings by Period of Construction	# of Dwellings	% of total
Period of construction, before 1946	65	29.55%
Period of construction, 1946 - 1960	55	25.00%
Period of construction, 1961 - 1970	25	11.36%
Period of construction, 1971 - 1980	45	20.45%
Period of construction, 1981 - 1990	30	13.64%
Period of construction, 1991 - 2001	0	0.00%
Total number of private dwellings constructed	220	100.00%

Source: Statistics Canada 2001 Census (numbers may not add up due to rounding)

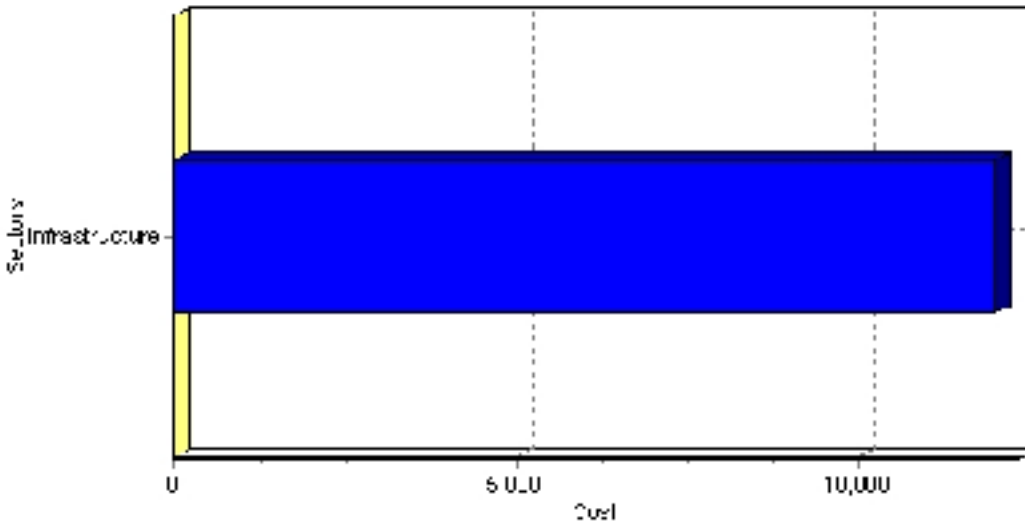
Projects

Summary of Projects in Berwyn as of September 2006

Project Sector	Number of Projects	Project Cost
Infrastructure	1	\$12,000
Total	1	\$12,000

This inventory lists projects in Alberta that have recently been completed, are under construction, or are proposed to start construction. Not all projects are listed due to reasons of confidentiality and/or due to information not being available at the time of printing. Project data is obtained from public information sources, where possible, this data has been verified with the project proponent/developer, users of the Inventory may wish to confirm project data with the proponent/developer. The inventory does not breakdown project expenditures by any given year. The cost of a project is the value of expenditures expected over all phases of project construction, which may span over two or more years. Cost of projects listed in the Inventory are estimated values only. Source: Alberta Economic Development, 2004.

Value of Projects by Sector (as of September 2006)



Project Status	Number of Projects	Project Cost
Under Construction	1	\$12,000
Total	1	\$12,000

This inventory lists projects in Alberta that have recently been completed, are under construction, or are proposed to start construction. Not all projects are listed due to reasons of confidentiality and/or due to information not being available at the time of printing. Project data is obtained from public information sources, where possible, this data has been verified with the project proponent/developer, users of the Inventory may wish to confirm project data with the proponent/developer. The inventory does not breakdown project expenditures by any given year. The cost of a project is the value of expenditures expected over all phases of project construction, which may span over two or more years. Cost of projects listed in the Inventory are estimated values only. Source: Alberta Economic Development, 2004.

Largest Projects in Berwyn as of September 2006

Company Name	Project Description	Project Location	Project Cost	Construction Schedule	Status
Village of Berwyn	New Roof - Village Office	Berwyn	\$12,000	2006-2006	Under Construction

Disclaimer: Information in this profile has been provided from a variety of external sources. Although every effort has been made to ensure the accuracy, currency and reliability of the content and data, AlbertaFirst.com Ltd. accepts no responsibility in this regard.

© AlbertaFirst.com Ltd., 2006.