

New Norway

www.cable-lynx.net/~nnorway/

Welcome

Welcome to our community. We hope the information contained within this profile is useful. If additional information is required, please contact our representative from the "Key Contacts" section.

Area Overview

The Village of New Norway was named after Scandinavian settlers who homesteaded in the area. The area was once called Olstad District because originally the majority of land in the area was owned by the Olstads. The settlement started in 1885, one mile east of the present townsite. With the Grand Trunk Pacific Railway coming through in 1910, it was more convenient to have the businesses closer to the railroad. In the fall of 1909, the buildings were moved to the present townsite. By 1910, New Norway was a booming young town.

Community Services

Municipal

Village of New Norway
Box 60
New Norway, Alberta
T0B 3L0
Tel: 780-855-3915
Fax: 780-855-3915

Provincial

N/A

Federal

Canada Post Office

Community Lifestyle

Recreation

Recreational facilities include a curling rink, skating rink, gymnasium and baseball diamonds. New soccer fields will be ready for spring of 2000.

Two km north of New Norway is the Silver Creek Golf Course and campground. A municipal campground is also located within the Village.

Community Organizations

Community organizations include the New Norway Community Club, Agricultural Society, and the New Norway & District Recreation Association.

Religious Services

- Evangelical Free Church
- Bethesda Lutheran Church
- Zion United Church

Special Annual Events/Attractions

New Norway's annual Sports Day and Parade attracts numerous families for various activities and games.

Hospitality

Accommodation

New Norway Hotel

Restaurants

New Norway Hotel Cafe

Economic Base

The main economic base of the area is agriculture.

Resources available locally are coal, petroleum, natural gas, sand/gravel, agriculture, salt, sulphur, bentonite and clay.

Economic Facts

The Village offers a variety of business services, including a service station, hotel & cafe, grocery store, hair salon, as well as a wide range of in-home businesses.

Major Businesses Products/Services

First Generation Foods Confections [candy bars]

Financial Institutions

Alberta Treasury Branch

Education

New Norway is part of the Battle River Regional Division #31, headquartered in Camrose [Tel: 780-672-6131].

Daycare/Nursery

A local playschool facility is available.

Public

New Norway School provides schooling for Grades K to 12.

Separate

N/A

Private

N/A

Emergency Services

Fire Protection

New Norway is served by a volunteer fire department - 911

Police Services

New Norway is served by the Camrose Detachment of the Royal Canadian Mounted Police [RCMP] Emergencies - 911 Inquiries
780-672-3342

Ambulance Services

Paramedic ambulance service is available from Camrose - 911

Health Care

The nearest hospital is St. Mary's Hospital, based in Camrose [24 km north], which has 117 acute care beds.

Key Contacts for Business Development

Municipal

Village of New Norway
Box 60
New Norway, Alberta
T0B 3L0
Tel: 780-855-3915
Fax: 780-855-3915
nnorway@cable-lynx.net

Katherine Kvill
Mayor

Anne Flynn
Administrator

Provincial (Updated December 2004)

Alberta Economic Development
Allan Walkey, Regional Manager
allan.walkey@gov.ab.ca
Dale Beddoes, Information Officer
dale.beddoes@gov.ab.ca

5005 - 49 Street
Camrose, Alberta
T4V 1N5
Tel: 780-679-1235
Fax: 780-679-1250

Raymond Prins
Member of the Legislative Assembly [MLA]
Lacombe-Ponoka Constituency
503 Legislature Building
10800 - 97 Avenue
Edmonton, Alberta
T5K 2B6
Tel: 780-422-3353
Fax: 780-422-0351

Federal (Updated June 2001)

Kevin Sorenson
Member of Parliament [MP]
Crowfoot Constituency
House of Commons
Ottawa, Ontario
K1A 0A6
Tel: 613-947-4608
Fax: 613-947-4611

Constituency Office:
Box 308
Killam, Alberta
T0B 2L0
Tel: 780-385-7080
Fax: 780-385-7083

Location

The Village of New Norway is located in the County of Camrose No. 22. New Norway is 24 km southwest of Camrose and 98 km south of Edmonton.

Post Secondary Education

New Norway residents have access to Augustana University, based in Camrose, which has over 1,000 students, a campus residence and degree granting status in 21 disciplines [arts and sciences].

Taxation

	<u>Residential/Farmland</u>	<u>Non-Residential</u>
2005		
Municipal Tax Rate	14.6860	14.6860
Education - Alberta School Foundation Fund Tax Rate	4.1420	7.3660

Mill Rates [1998]

Residential - Public 19.373
Residential - Separate N/A
Non-Residential - Public 23.500

Transportation

Air Services

The nearest airport is at Camrose [24 km north]. The nearest commercial and air freight facilities are at Edmonton.

Rail Services

New Norway is served by a Canadian National Railway secondary line. Spur trackage is available.

Highways

Highway 21 is a connecting highway, leading north to Camrose [via Highway 13] and Edmonton, and south to Bashaw.

Trucking Firms

- Holts Trucking
- HiWay 13 Transport

Bus Services

Regularly scheduled inter-community bus service is available.

Couriers and Taxis

Loomis and Purolator Couriers, Greyhound Courier Express

Utilities

Electrical Power

TransAlta Utilities Corporation
Tel: 1-800-667-2345

Natural Gas

Battle River Gas Co-op
Box 129
Ferintosh, Alberta
T0B 1M0
Tel: 780-877-3740

Telephone

Telus
Edmonton Business Office
10020 - 100 St.
Edmonton, Alberta
T5J 0N5
Tel: 780-493-4400

Water Supply

New Norway's source of water is from 2 wells.

Waste Management

Sewage treatment is by lagoon, 2 short and 2 long detention.

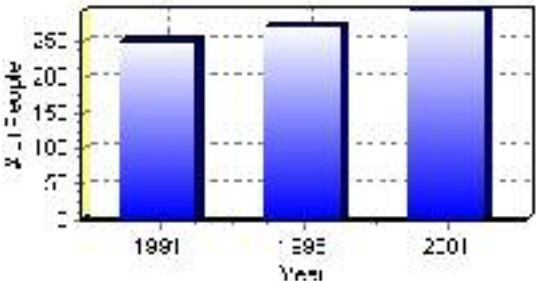
Population

Total Population

Population 2004*	292
Population 2003*	292
Population 2002*	292
Population 2001**	295
Population 2000*	270
Population 1996**	270
Population 1991**	251
Population % change 1991-1996	7.04%
Population % change 1996-2001	7.53%

* Source: Official Population List, Alberta Municipal Affairs
** Source: Statistics Canada 1991, 1996, & 2001 Census

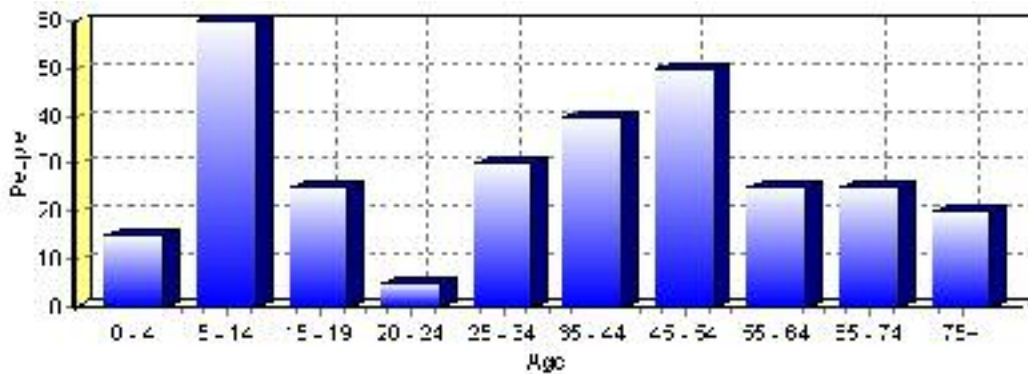
Total Population 1991-2001



Population by Age and Gender	1996 Male	1996 Female	1996 Total	2001 Male	2001 Female	2001 Total
Age 0 - 4	15	10	25	10	5	15
Age 5 - 14	25	30	55	30	30	60
Age 15 - 19	10	10	20	10	15	25
Age 20 - 24	0	5	5	0	5	5
Age 25 - 34	15	20	35	10	20	30
Age 35 - 44	25	20	45	25	15	40
Age 45 - 54	15	20	35	25	25	50
Age 55 - 64	20	5	25	15	10	25
Age 65 - 74	10	10	20	15	10	25
Age 75 and older	5	5	10	10	10	20
Total All Persons	130	140	270	145	140	285

Source: Statistics Canada 1996 & 2001 Census (numbers may not add up due to rounding)

New Norway Population by Age Group (2001)

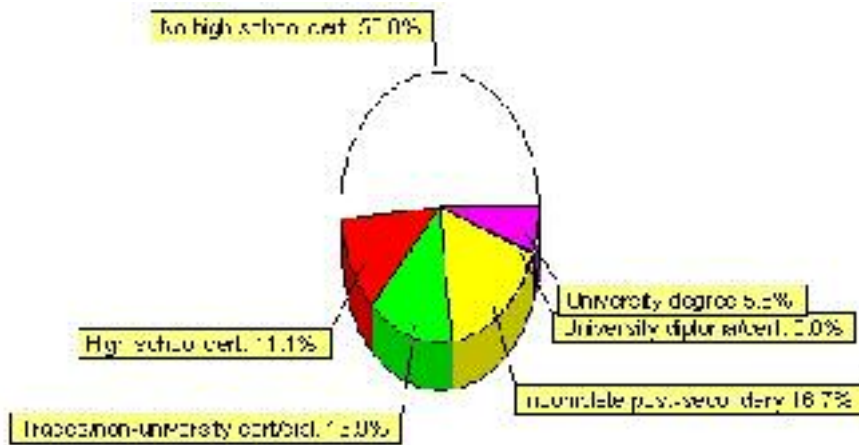


Education Statistics

Highest level of schooling for Population 20yrs and older	2001	%
People without high school certificates	90	50.00%
People with high school certificates	20	11.11%
People with trades or non-university certificate or diploma	25	13.89%
People with post-secondary education (not completed)	30	16.67%
People with university diploma/certificate	0	0.00%
People with university degree	10	5.56%
Total Population 20 years and older	180	100.00%

Source: Statistics Canada 2001 Census (numbers may not add up due to rounding)

New Norway Highest Level of Schooling 2001



Population with Post Secondary Qualifications	1996	%	2001	%
Agriculture and biological sciences	10	25.00%	0	0.00%
Commerce, management and business administration	0	0.00%	10	25.00%
Educational, recreational and counseling services	0	0.00%	0	0.00%
Engineering and applied science tech. and trades	20	50.00%	10	25.00%
Engineering and applied sciences	0	0.00%	10	25.00%
Fine and applied arts	10	25.00%	0	0.00%
Health professionals, science and technologies	10	25.00%	0	0.00%
Humanities and related fields	0	0.00%	0	0.00%
Mathematics and physical sciences	0	0.00%	0	0.00%
Social sciences and related fields	0	0.00%	0	0.00%
Other and/or no specialization	0	0.00%	0	0.00%
Total people with post secondary qualifications	40	100.00%	40	100.00%
Females with post-secondary qualifications	30	75.00%	20	50.00%
Males with post-secondary qualifications	10	25.00%	20	50.00%

Source: Statistics Canada 1996 & 2001 Census (numbers may not add up due to rounding)

Labour Force

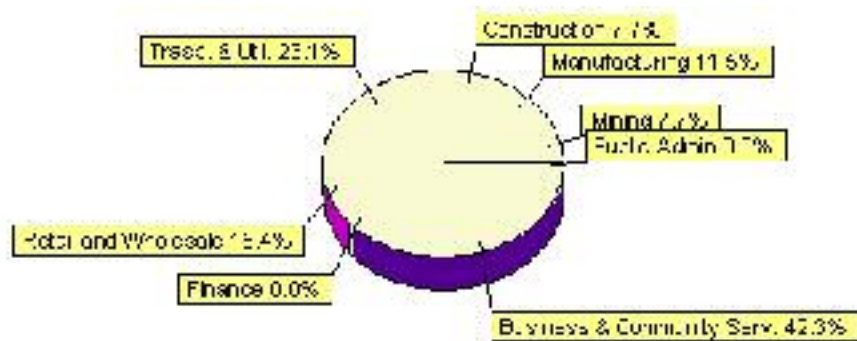
Labour force by activity	1996	2001
In the labour force, both sexes	95	130
Not in the labour force, both sexes	85	80
Total population 15 and over	180	210
Employed, both sexes	85	115
Unemployed, both sexes	10	10
Participation rate, both sexes	52.00%	62.00%
Unemployment rate, both sexes	11.00%	8.00%

Source: Statistics Canada 1996 & 2001 Census (numbers may not add up due to rounding)

Labour Force by Industry Division	1996	% of total	2001	% of total
Agriculture	10	10.53%	0	0.00%
Mining	0	0.00%	10	7.69%
Manufacturing	0	0.00%	15	11.54%
Construction	10	10.53%	10	7.69%
Transportation. & Utilities	0	0.00%	30	23.08%
Retail and Wholesale	30	31.58%	20	15.38%
Finance	0	0.00%	0	0.00%
Business & Community Services	50	52.63%	55	42.31%
Public Administration	0	0.00%	0	0.00%
Total All Industries	95	100.00%	130	100.00%

Source: Statistics Canada 1996 & 2001 Census (numbers may not add up due to rounding)

New Norway Labour Force By Industry - 2001



Labour Force by Major Occupational Groups	1996	%	2001	%
Management occupations	0	0.00%	20	15.38%
Business, Finances and administrative occupations	0	0.00%	15	11.54%
Natural and applied sciences and related occupations	0	0.00%	10	7.69%
Health occupations	10	10.53%	0	0.00%
Occupations in social science; education; government and religion	10	10.53%	20	15.38%
Occupations in art; culture; recreation and sport	0	0.00%	0	0.00%

Sales and service occupations	40	42.11%	10	7.69%
Trades; transport; equipment operators and related occupations	0	0.00%	35	26.92%
Occupations unique to primary industry	10	10.53%	10	7.69%
Occupations unique to processing; manufacturing and utilities	15	15.79%	20	15.38%
Occupations not elsewhere classified	0	0.00%	0	0.00%
Total - All Occupations (major groups)	95	100.00%	130	100.00%
Females - All Occupations	50	52.63%	60	46.15%
Males - All Occupations	45	47.37%	70	53.85%

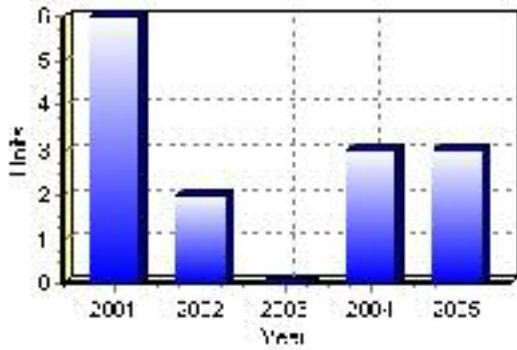
Source: Statistics Canada 1996 & 2001 Census (numbers may not add up due to rounding)

Building Permits

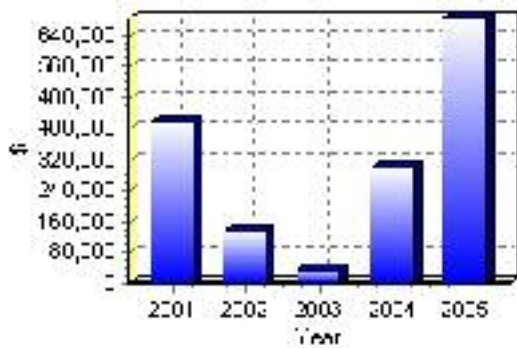
Total Building Permit Values	2001	2002	2003	2004	2005
Building Permits Value, Commercial	\$0	\$0	\$0	\$0	\$200,000
Building Permits Value, Industrial	\$0	\$0	\$0	\$0	\$0
Building Permits Value, Institutional	\$0	\$0	\$0	\$0	\$0
Building Permits Value, Residential	\$416,000	\$136,000	\$35,000	\$300,000	\$485,000
Building Permits Value, Total	\$416,000	\$136,000	\$35,000	\$300,000	\$685,000
Total Housing Starts	6	2	0	3	3

Source: Statistics Canada 2000-2004 Building Permits (numbers may not add up due to rounding)

Total Housing Starts



Value of Building Permits



Dwellings

Occupied Private Dwellings by Type	1996	% of total	2001	% of total
Apartments	0	0.00%	0	0.00%
Detached Duplexes	0	0.00%	0	0.00%
Movable Dwellings	10	10.00%	0	0.00%
Other single attached house	0	0.00%	5	4.55%
Row and semi-detached house	10	10.00%	10	9.09%
Single-detached house	80	80.00%	90	81.82%
Total number of occupied private dwellings	100	100.00%	110	100.00%
Private dwellings, owned	70	70.00%	85	77.27%
Private Dwellings, rented	35	35.00%	25	22.73%

Source: Statistics Canada 1996 & 2001 Census (numbers may not add up due to rounding)

Private Dwellings by Period of Construction	# of Dwellings	% of total
Period of construction, before 1946	20	18.18%
Period of construction, 1946 - 1960	10	9.09%
Period of construction, 1961 - 1970	35	31.82%
Period of construction, 1971 - 1980	25	22.73%
Period of construction, 1981 - 1990	20	18.18%
Period of construction, 1991 - 2001	0	0.00%
Total number of private dwellings constructed	110	100.00%

Source: Statistics Canada 2001 Census (numbers may not add up due to rounding)

Disclaimer: Information in this profile has been provided from a variety of external sources. Although every effort has been made to ensure the accuracy, currency and reliability of the content and data, AlbertaFirst.com Ltd. accepts no responsibility in this regard.

© AlbertaFirst.com Ltd., 2006.