

Longview

www.village.longview.ab.ca

Welcome

WELCOME TO LONGVIEW

ALBERTA, CANADA



We appreciate your interest in our beloved community. Longview is located on Highway 22, 'The Cowboy Trail' and the junction of Highway 541. We are the Gateway to the Kananaskis with absolutely breathtaking views of the spectacular Canadian Rockies. Our location is conducive to serenity, peacefulness and creativity.

Longview offers many opportunities for growth in commercial, industrial and residential areas with a particularly strong focus on retirement, country living and the tourism trade. Many artists live in and around Longview, drawing on the surrounding beauty of the landscape and abundant native wildlife.

Longview is presently devising a five year plan for growth and sustainability. We are hoping to move forward with a controlled pattern of growth in order to infuse Longview with new, young families who are intent on calling Longview "Home". Longview is preparing for a future with a high quality of life, while maintaining our current old Western feel and small village atmosphere that drew most of us here in the first place. We hope to ensure that any future development will include a hearty emphasis on 'Green Power' and other ecologically sound business practices. We encourage and promote forward thinking development projects and businesses and invite new companies, entrepreneurs and artists to investigate what the Village of Longview has to offer.

Longview is within a short 45 minute commute to the south end of Calgary which is much more pleasant than an hour long commute across town in a large city during rush hour traffic. We hope that you will be intrigued enough by this short intro to consider Longview as a great place to call home or to open a new business. Please feel free to drop by our office at 128 Morrison Road for more economic development and tourism information on our Community.

Quick Facts about Longview

- **Population:** 307 (2004 Civic Census)
- **Location:** Provincial Highway 22 (The Cowboy Trail) and Highway 541 61 kilometres south-west of Calgary
- **Lifestyle:** Rural/Urban Country Western Relaxed Living combined with close proximity to the ultra modern urban wonderland of Calgary, Alberta
- **Local Economy:** A focus on agriculture, small business and Tourism related businesses.

Area Overview



The Village of Longview is located along the bustling tourism corridor of Highway 22, commonly known as the "**Cowboy Trail**". The Cowboy Trail was voted 'Best Drive Alberta' in 2004 by the 'Get Going Canada' Program. Tourists from around the world have signed the guest book at our tourist information booth and

the numbers keep increasing every year.

The Village has been experiencing steady growth over the last few years, boasting a new subdivision on the west side of Longview and we hope to see more growth in the future.

Longview stands at the 'Gateway to Kananaskis Country' where there is always something new and different to experience. Our Highwood River boasts some of the best fishing in the world. The river supports Bull, White and Rainbow trout.

Many residents commute to larger urban centers for work while enjoying the peace, beauty and tranquility of living close to our spectacular Rocky Mountains and breathing our fresh clean mountain air!

ALBERTA, THE BEST PLACE TO WORK, LIVE AND DO BUSINESS

The province of Alberta is a leader in the Canadian economy. Alberta has had the fastest growing economy in Canada over the past two decades, with real GDP growth averaging 3.7 percent per year. Highlighting Alberta's success in the past year is:

- Over \$73.2 billion in international exports of goods and services (2004)
- Manufacturing shipments of \$52.6 billion (2004)
- Creation of 40,000 new jobs in 2004 and 433,900 between 1994 and 2004
- Over \$103 billion in major capital projects are proposed, announced, under construction or recently completed (2004)

Source: [Alberta Economic Development](#)

Alberta's Positive Business Climate

- The lowest overall taxes in Canada
- No provincial sales tax
- No general capital or payroll taxes prevalent in other provinces and U.S. states
- A highly entrepreneurial and competitive business community
- A fiscally responsible government that has eliminated its provincial debt, demonstrating to investors the business-like attitude of the government
- A highly skilled, educated and motivated workforce that is the most productive in Canada.



Source: [Alberta Economic Development](#)

Climate



Community Services

Village Office
Post Office
Tourist Info Centre
Skating Rink

Longview Bible Fellowship
Marigold Library



Longview & Rural Fire Department
Tales & Trails Campground

Village Office and Post Office
Longview Cowboys Summer Day Camp
Longview Community Hall
Park/Playground
Longview & District Recreation Board
Historical Society

Hall Board/Library Board
Little New York Daze Committee

Community Lifestyle

RECREATION

Does white water rafting, canoeing, cycling or horseback riding excite you? How about the thrill of catching your first or biggest fish or landing that trophy animal? Have you experienced some of the most scenic terrain in our province on a snowmobile or on skis?

Have you ever savored the tranquility of camping, bird watching, photography or painting that perfect picture?

Even a relaxing country drive will make you feel one with nature. With all that is happening in and around Longview, you can't help but experience something new and different each and every time you visit.

EVENTS & ATTRACTIONS

- **K100 Race** ~ Third weekend in June

The [Kananaskis 100 Mile Relay Race \(K-100\)](#) is entering its 20th year as a major fundraiser for Hostelling International - Canada - Pacific Mountain Region.



The Pacific Mountain Region is part of the International Youth Hostel Federation's network of over 5000 hostels in more than 70 countries. Hostels provide affordable, quality accommodation and services for guests of all ages and nationalities. Alberta and BC hostels are ideally located for guests to enjoy a wide range of outdoor activities including cycling, hiking, and skiing. Funds raised by the K-100 are used to maintain and develop regional hostels and fund special projects according to the organization's mandate.

Little New York Daze ~ Third weekend in July It's a tradition that's been ongoing for as long as Longview residents can remember, so when Little New York Daze rolls into town, it's something the whole family won't want to miss.



The celebrations kick off with a pancake breakfast, followed by a parade composed of local residents and businesses down main street. After the parade, there are a number of ongoing events throughout the village such as face painting, a petting zoo, mutton busting, a horse show and a farmers' market Saturday afternoon.

In addition to the events set to take place on Saturday, a cowboy church in the park is held on Sunday afternoon and will feature more kids activities, beer gardens and live music.

For more information about the fun and festivities scheduled at Little New York Daze contact the Village of Longview at 558-3922.

- **[Kananaskis Country](#)** ~ Gateway to the southern entrance

Kananaskis Country is a 4,000 sq. km multiple use area located in the foothills and mountains of the Canadian Rockies west of Calgary. It is a diverse landscape including outstanding parks and a wide range of natural resources providing opportunities for social, cultural and economic benefits. Explore our web site and discover the diversity of recreational activities and services that you can enjoy when you visit Kananaskis Country.

- **[Bar U Historical Ranch](#)**

Throughout the Bar U Ranch's history there have been many colourful characters such as John Ware, the Sundance Kid, H.R.H. Edward Prince of Wales and two of the big four who founded the first ever Calgary Exhibition and Stampede - George Lane and Patrick Burns.

- **[Turner Valley Gas Plant Historic Site](#)**

Experience a time when light from the gas flares turned night into day. The Turner Valley Gas Plant is located near the Sheep River amid the beautiful, rolling foothills of southern Alberta. Here, with the spectacular Rocky Mountains as a backdrop, you can explore the colourful history of the oil and gas industry in Alberta, Canada.

- **[Chain Lakes Provincial Park](#)**

Beautiful campground nestled in the foothills of Canada's prime ranching country in the Willow Creek valley between the Porcupine Hills and the Rocky Mountains. This park provides year-round camping and fishing opportunities. On site concession provides hot meals and specialty coffees. Very secluded sites surrounded by trees and willows restrict open fires to community fire-pits only

- **[Brian Lyttle - world renowned Knife Maker](#)**

Brian Lyttle Custom Knifemaker, Bladesmith, Engraver, Scrimshander, Instructor

- **Home of many artists and entertainers**

- **Golf Courses within 10 minutes**

- **Prime movie locations**

- **Hogg Park**

- **Sullivan Graves**
- **Highwood River**

Campgrounds There are several campgrounds near Longview, including a full facility campground within the Village limits. For more information on area campgrounds please call: Tails & Trails Campground ~ 1-403-558-3922 Travel Alberta ~ 1-800-222-6501 Chain Lakes ~ 1-403-646-2629 Mount Kidd ~ 1-403-591-7700 Hogg Park ~ 1-403-558-3775

Economic Base

Twin Cities Trailer Court 558-2490
 Tales & Trails Campground & Information Booth 558-3922
 Chinook Gas & Grocery 558-3934
 Longview Steak House 558-2002
 Longview Meat & Merchandise Ltd.
 558-3707
 Hwy. 22 Liquor Store 558-2344
 Longview School 558-3945
 Black Cat Restaurant 558-0000
 Blue Sky Motel 558-3655
 Memories Inn Restaurant 558-3665
 Gallup's Firewood 558-2231
 Administration Office & Library
 Post Office 558-3922
 558-3758
 Twin Cities Hotel & Laundromat 558-3787
 Hayden's Machine Shop 558-3911
 Hayden's Car Wash 558-3911
 Hughes Transport 558-3780
 Longview & Rural Fire Dept.
 (Non-emergency) 911
 558-2449
 Four Winds Restaurant 558-3776
 Longview Beef Jerky 558-3960
 One Horse Gallery 558-2454
 Longview Bible Fellowship 558-2368
 Westwind Pipe Laydown Service Ltd. 558-3681
 Heidi's Food Saloon 558-2008
 Bump's Pit Stop
 558-2055
 Ridge Top Tack Shop 558-3753
 Longview Library 558-3927
 Ian Tyson's Navajo Mug 558-2272
 T & L Fencing 558-3998

Economic Facts

Workers Compensation

- Average cost per \$100 payroll in Manufacturing: \$3-\$4
- Average cost per \$100 payroll in Office Work: \$.40
- Maximum weekly benefit \$1,176.92

For additional details on the program see: [Workers Compensation Board](#)

Employment Insurance

- 55% of your average insurable earnings to a maximum of \$413 per week.

For additional information on the program see: [Employment Insurance Information for Employers](#)

Research Base



Being a close neighbor of the City of Calgary, businesses located in Longview have access to a broad range of research facilities located in an around the City. For additional information on the following research facilities, simply click on the name to access the link.

- [Alberta Research Council](#)
- [Calgary Technologies Inc.](#)
- [Edmonton Economic Development Corporation](#)
- [Food Processing Development Centre](#)
- [TRLabs](#)
- [WurcNet](#)

Further In-Depth Information

- [Municipal Profiles developed by Alberta's Ministry of Municipal Affairs](#)
- [Alberta - A Wealth of Opportunity developed by Alberta Economic Development](#)
- [Alberta Economic Highlights developed by](#)
- [Alberta Economic Outlook developed by Alberta Economic Development](#)
- [Alberta Export and Trade developed by Alberta Economic Development](#)
- [Tourism Reports developed by Alberta Economic Development](#)
- [Alberta Finance Statistics](#) also contains much information which may be useful.

Education

Longview is part of the [Foothills School Division #38](#) located at:
120 5 Ave SW ~ High River ~ Tel: (403) 652-3001

[Longview School](#) ~ (ECS - Grade 8)



[Humpty Dumpty Play School](#)

Emergency Services

Special Constables

Disaster Services

Health Care

Longview is under the jurisdiction of Calgary Health Region. Visit their web site at calgaryhealthregion.ca for more information.

Key Contacts for Business Development

Village of Longview

PO Box 147

Longview AB

T0L 1H0

Tel: (403)558-3922

Fax: (403)558-3743

Email: longviewadmin@karju.net

Mayor

Ivor McCorquindale

Email: longviewvillage@nucleus.com

Administrator

Virginia Tyler

Email: longviewadmin@karju.net

Office Manager

June Folkard

Email: longviewvillage@nucleus.com

Highwood Business Development Corporation

John Lockhart

#3 28 - 12 Avenue S.E.

High River, Alberta

T1V 1E6

Tel: (403) 652-3700

Email: info@hbdc.net

PROVINCIAL

Walter Valentini, Director

Alberta Economic Development

#300, 639-5th Avenue S.W.

Calgary, Alberta

T2P 0M9

Tel: (403) 297-8920

Fax (403) 297-6168

Email: walter.valentini@gov.ab.ca

George Groeneveld

Member of the Legislative Assembly (MLA)
Highwood Constituency
721 Legislature Annex
9718 107 Street
Edmonton AB
T5K 1E4
Tel: 780-422-7199
Fax: 780-422-1671

Constituency Office:
P.O. Box 5243
103 - 3rd Avenue West
High River AB
T1V 1M4
Tel: 403-652-7100
Fax: 403-652-7757

FEDERAL

Ted Menzies
Member of Parliament
Macleod Constituency
House of Commons
Ottawa, Ontario
K1A 0A6
Tel: 613-995-8471
Fax: 613-996-9770

Constituency Office:
4925 1st Street West
P.O. Box 40
Claresholm AB
T0L 0T0
Tel: 403-625-5532
Toll Free: 1-866-636-9437
Fax: 403-625-5592

Location

Longview is located in an area that the Indians once used for hunting and gathering.

Longview was originally a small community hamlet that was established at the turn of the century to service the surrounding farms and ranches. The area began to boom after oil was discovered in Turner Valley in 1914 and "Little New York" was born. The community eventually moved a few miles west of its previous location and re-assumed its original name of Longview. In the height of the oil boom, the population swelled to an unbelievable 2500 people. The petroleum industry declined in Longview during the 1940's which in turn caused a decline in the population who were mainly oil patch workers at the time. Longview's long standing position in the area allowed it to survive and actually received local government in the 1960's. Longview stands at the "gateway" to the Kananaskis which is one of the most beautiful tourism zones in the world.



ALBERTA MAP



VILLAGE OF LONGVIEW LOCATION

Longview's proximity to various locations:

- to Black Diamond - 18 km.
- to Turner Valley - 21 km.
- to Okotoks - 39 km.
- to Calgary City Limits - 58 km.
- to Calgary Int'l Airport - 90 km.
- to High River - 40 km.
- to #3 Highway - 113 km.

Post Secondary Education

Building Futures

The Village of Longview is just minutes away from world-class education facilities. Longview's proximity to Calgary allows students the opportunity to attend post-secondary institutions with minimal travel.

For information on Educational Opportunities in close proximity to Longview visit the school's corresponding website:



Educational Facility	Location	Telephone	Web site
University of Calgary	Calgary, AB	403-220-5110	www.ucalgary.ca
University of Lethbridge	Lethbridge, AB	403-320-5700	www.uleth.ca
S.A.I.T.	Calgary, AB	403-284-7248	www.sait.ab.ca
Mount Royal College	Calgary, AB	403-240-6111	www.mtroyal.ab.ca
AB College of Art & Design	Calgary, AB	403-284-7600	www.acad.ab.ca
Devry Canada	Calgary, AB	403-235-3450	www.devry.ca
Olds Agricultural College	Olds, AB	1-800-661-6537	www.oldscollege.ab.ca/
Red Deer College	Red Deer, AB	403- 342-3300	www.rdc.ab.ca/

Taxation

	<u>Residential/Farmland</u>	<u>Non-Residential</u>
2005		
Municipal Tax Rate	7.7159	7.7159

Education - Alberta School Foundation Fund Tax Rate	3.7580	4.9017
Education Opted Out Tax Rate	3.7580	4.9017
Seniors Lodge Accommodation Tax Rate	.1232	.1232

Transportation

AIR TRANSPORTATION

High River (40 km east) has a modern airport which is served by charter companies and is equipped for night use. It is located 5.6 km (3.5 miles) south of High River on Highway 2A and offers all-weather facilities. The longest runway is 912 meters (3000 feet). The airport offers hanger services, as well as fuel and maintenance facilities. A flight school also operates at the High River airport.

The nearest commercial airport with scheduled passenger services and air freight facilities is the [Calgary International Airport](#), some 60 km to the north.

Utilities

ELECTRICITY & NATURAL GAS are deregulated in Alberta.

The Alberta government provides a Web site to provide information to assist consumers to choose the appropriate provider for their residence or business. To learn more about electrical or natural gas providers visit [Customer Choice](#).

Regulated Rate Providers for Community of Longview are:

Electrical Power:

[Epcor](#)
310-4300

Natural Gas:

[Direct Energy Services](#)
245-7838

COMMUNICATIONS

Cable Television:

[Persona](#)
1-866-737-7662

Telephone:

[Telus Communications](#)
310-2255

Internet Service:

[Telus Communications](#)
1-877-310-4NET (4638)



Longview has access to:
All the major radio stations from Calgary

Local/Regional Newspapers

Name	Phone Number	Fax Number
------	--------------	------------

<u>Western Wheel</u>	(403) 938-6397	(403) 938-2518
<u>The Calgary Sun</u>	(403) 410-1010	(403) 250-4180
<u>The Calgary Herald</u>	(403) 235-7100	(403) 235-7379

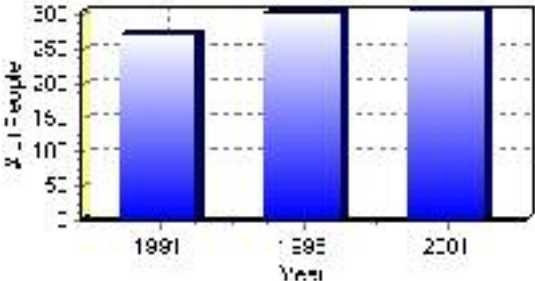
Population

Total Population

Population 2004*	307
Population 2003*	300
Population 2002*	300
Population 2001**	300
Population 2000*	303
Population 1996**	303
Population 1991**	271
Population % change 1991-1996	10.56%
Population % change 1996-2001	-1.00%

* Source: Official Population List, Alberta Municipal Affairs
** Source: Statistics Canada 1991, 1996, & 2001 Census

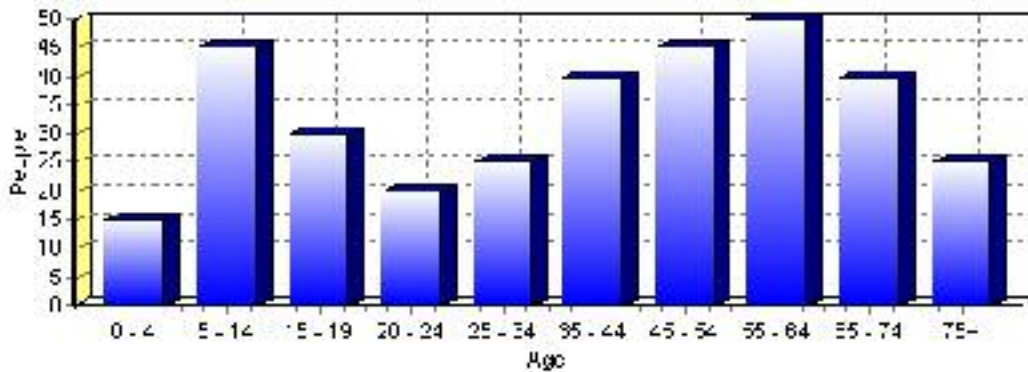
Total Population 1991-2001



Population by Age and Gender	1996 Male	1996 Female	1996 Total	2001 Male	2001 Female	2001 Total
Age 0 - 4	10	5	15	5	10	15
Age 5 - 14	35	20	55	25	20	45
Age 15 - 19	10	15	25	15	15	30
Age 20 - 24	10	5	15	10	10	20
Age 25 - 34	10	20	30	15	10	25
Age 35 - 44	25	35	60	15	25	40
Age 45 - 54	30	15	45	25	20	45
Age 55 - 64	15	15	30	25	25	50
Age 65 - 74	10	15	25	25	15	40
Age 75 and older	10	10	20	15	10	25
Total All Persons	160	145	305	155	140	295

Source: Statistics Canada 1996 & 2001 Census (numbers may not add up due to rounding)

Longview Population by Age Group (2001)

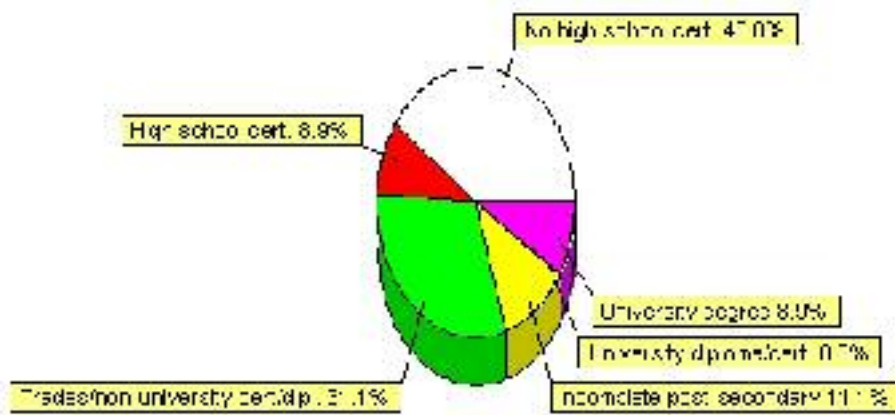


Education Statistics

Highest level of schooling for Population 20yrs and older	2001	%
People without high school certificates	90	40.00%
People with high school certificates	20	8.89%
People with trades or non-university certificate or diploma	70	31.11%
People with post-secondary education (not completed)	25	11.11%
People with university diploma/certificate	0	0.00%
People with university degree	20	8.89%
Total Population 20 years and older	225	100.00%

Source: Statistics Canada 2001 Census (numbers may not add up due to rounding)

Longview Highest Level of Schooling 2001



Population with Post Secondary Qualifications	1996	%	2001	%
Agriculture and biological sciences	10	20.00%	0	0.00%
Commerce, management and business administration	0	0.00%	10	11.11%
Educational, recreational and counseling services	15	30.00%	15	16.67%
Engineering and applied science tech. and trades	0	0.00%	35	38.89%
Engineering and applied sciences	0	0.00%	0	0.00%
Fine and applied arts	10	20.00%	15	16.67%
Health professionals, science and technologies	0	0.00%	15	16.67%
Humanities and related fields	10	20.00%	0	0.00%
Mathematics and physical sciences	10	20.00%	10	11.11%
Social sciences and related fields	0	0.00%	10	11.11%
Other and/or no specialization	0	0.00%	0	0.00%
Total people with post secondary qualifications	50	100.00%	90	100.00%
Females with post-secondary qualifications	35	70.00%	50	55.56%
Males with post-secondary qualifications	15	30.00%	40	44.44%

Source: Statistics Canada 1996 & 2001 Census (numbers may not add up due to rounding)

Labour Force

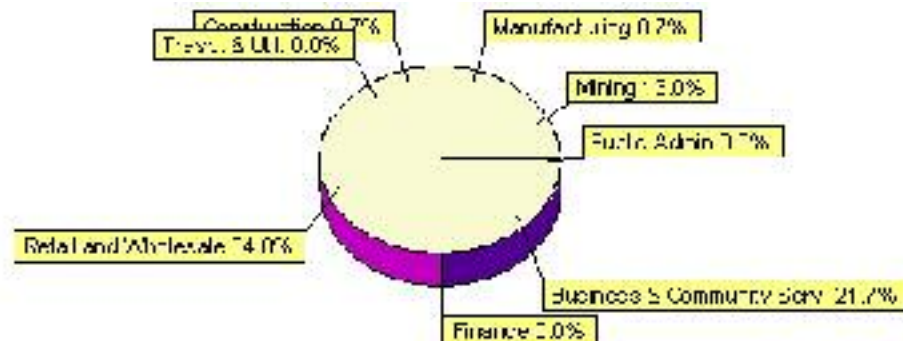
Labour force by activity	1996	2001
In the labour force, both sexes	150	115
Not in the labour force, both sexes	95	130
Total population 15 and over	240	240
Employed, both sexes	140	115
Unemployed, both sexes	0	0
Participation rate, both sexes	62.00%	48.00%
Unemployment rate, both sexes	0.00%	0.00%

Source: Statistics Canada 1996 & 2001 Census (numbers may not add up due to rounding)

Labour Force by Industry Division	1996	% of total	2001	% of total
Agriculture	30	20.00%	0	0.00%
Mining	0	0.00%	15	13.04%
Manufacturing	20	13.33%	10	8.70%
Construction	15	10.00%	10	8.70%
Transportation. & Utilities	15	10.00%	0	0.00%
Retail and Wholesale	35	23.33%	40	34.78%
Finance	0	0.00%	0	0.00%
Business & Community Services	20	13.33%	25	21.74%
Public Administration	0	0.00%	0	0.00%
Total All Industries	150	100.00%	115	100.00%

Source: Statistics Canada 1996 & 2001 Census (numbers may not add up due to rounding)

Longview Labour Force By Industry - 2001



Labour Force by Major Occupational Groups	1996	%	2001	%
Management occupations	0	0.00%	25	21.74%
Business, Finances and administrative occupations	15	10.00%	0	0.00%
Natural and applied sciences and related occupations	0	0.00%	0	0.00%
Health occupations	0	0.00%	0	0.00%
Occupations in social science; education; government and religion	15	10.00%	15	13.04%
Occupations in art; culture; recreation and sport	10	6.67%	0	0.00%

Sales and service occupations	35	23.33%	20	17.39%
Trades; transport; equipment operators and related occupations	35	23.33%	20	17.39%
Occupations unique to primary industry	15	10.00%	15	13.04%
Occupations unique to processing; manufacturing and utilities	15	10.00%	15	13.04%
Occupations not elsewhere classified	0	0.00%	0	0.00%
Total - All Occupations (major groups)	150	100.00%	115	100.00%
Females - All Occupations	50	33.33%	50	43.48%
Males - All Occupations	100	66.67%	60	52.17%

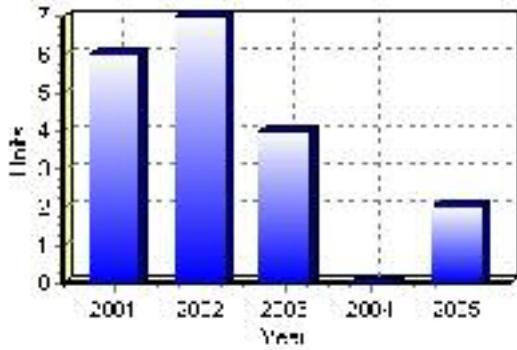
Source: Statistics Canada 1996 & 2001 Census (numbers may not add up due to rounding)

Building Permits

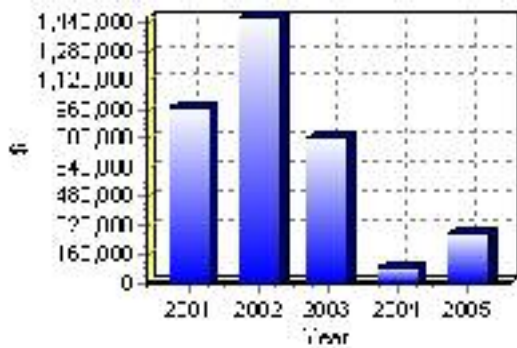
Total Building Permit Values	2001	2002	2003	2004	2005
Building Permits Value, Commercial	\$0	\$50,000	\$0	\$65,000	\$0
Building Permits Value, Industrial	\$0	\$500,000	\$0	\$0	\$0
Building Permits Value, Institutional	\$0	\$0	\$0	\$0	\$0
Building Permits Value, Residential	\$969,000	\$915,000	\$801,000	\$26,000	\$276,000
Building Permits Value, Total	\$969,000	\$1,465,000	\$801,000	\$91,000	\$276,000
Total Housing Starts	6	7	4	0	2

Source: Statistics Canada 2000-2004 Building Permits (numbers may not add up due to rounding)

Total Housing Starts



Value of Building Permits



Dwellings

Occupied Private Dwellings by Type	1996	% of total	2001	% of total
Apartments	0	0.00%	10	8.70%
Detached Duplexes	0	0.00%	0	0.00%
Movable Dwellings	20	14.81%	0	0.00%
Other single attached house	0	0.00%	5	4.35%
Row and semi-detached house	0	0.00%	0	0.00%
Single-detached house	115	85.19%	110	95.65%
Total number of occupied private dwellings	135	100.00%	115	100.00%
Private dwellings, owned	120	88.89%	105	91.30%
Private Dwellings, rented	20	14.81%	10	8.70%

Source: Statistics Canada 1996 & 2001 Census (numbers may not add up due to rounding)

Private Dwellings by Period of Construction	# of Dwellings	% of total
Period of construction, before 1946	10	8.70%
Period of construction, 1946 - 1960	25	21.74%
Period of construction, 1961 - 1970	20	17.39%
Period of construction, 1971 - 1980	45	39.13%
Period of construction, 1981 - 1990	15	13.04%
Period of construction, 1991 - 2001	0	0.00%
Total number of private dwellings constructed	115	100.00%

Source: Statistics Canada 2001 Census (numbers may not add up due to rounding)

Disclaimer: Information in this profile has been provided from a variety of external sources. Although every effort has been made to ensure the accuracy, currency and reliability of the content and data, AlbertaFirst.com Ltd. accepts no responsibility in this regard.

© AlbertaFirst.com Ltd., 2006.