

## Population

---

### Total Population

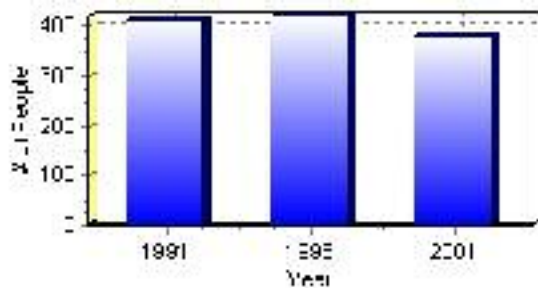
---

Population 2004*	379
Population 2003*	379
Population 2002*	379
Population 2001**	380
Population 2000*	420
Population 1996**	421
Population 1991**	412
Population % change 1991-1996	2.14%
Population % change 1996-2001	-11.08%

\* Source: Official Population List, Alberta Municipal Affairs  
\*\* Source: Statistics Canada 1991, 1996, & 2001 Census

---

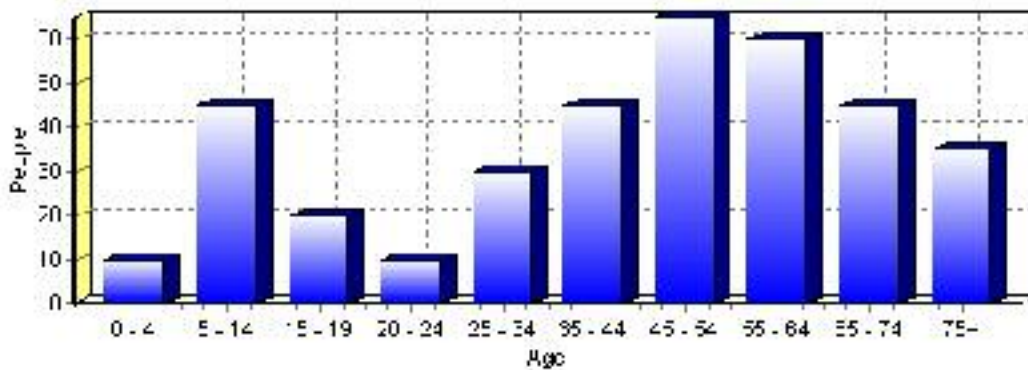
### Total Population 1991-2001



Population by Age and Gender	1996 Male	1996 Female	1996 Total	2001 Male	2001 Female	2001 Total
Age 0 - 4	15	10	25	5	5	10
Age 5 - 14	35	40	75	25	20	45
Age 15 - 19	10	10	20	10	10	20
Age 20 - 24	10	10	20	5	5	10
Age 25 - 34	20	25	45	15	15	30
Age 35 - 44	40	25	65	25	20	45
Age 45 - 54	15	30	45	25	40	65
Age 55 - 64	15	15	30	30	30	60
Age 65 - 74	20	20	40	25	20	45
Age 75 and older	25	25	50	15	20	35
Total All Persons	205	215	420	190	190	380

Source: Statistics Canada 1996 & 2001 Census (numbers may not add up due to rounding)

### Warner Population by Age Group (2001)

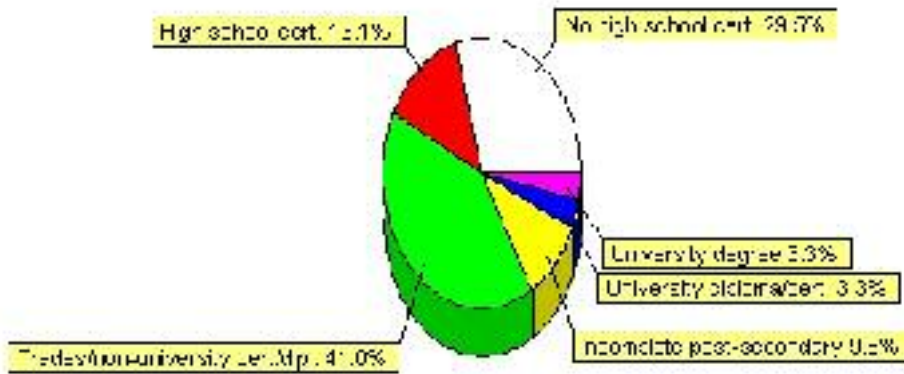


# Education Statistics

Highest level of schooling for Population 20yrs and older	2001	%
People without high school certificates	90	29.51%
People with high school certificates	40	13.11%
People with trades or non-university certificate or diploma	125	40.98%
People with post-secondary education (not completed)	30	9.84%
People with university diploma/certificate	10	3.28%
People with university degree	10	3.28%
Total Population 20 years and older	305	100.00%

Source: Statistics Canada 2001 Census (numbers may not add up due to rounding)

## Warner Highest Level of Schooling 2001



Population with Post Secondary Qualifications	1996	%	2001	%
Agriculture and biological sciences	20	12.90%	0	0.00%
Commerce, management and business administration	35	22.58%	30	20.69%
Educational, recreational and counseling services	15	9.68%	10	6.90%
Engineering and applied science tech. and trades	55	35.48%	50	34.48%
Engineering and applied sciences	0	0.00%	10	6.90%
Fine and applied arts	10	6.45%	25	17.24%
Health professionals, science and technologies	10	6.45%	0	0.00%
Humanities and related fields	0	0.00%	10	6.90%
Mathematics and physical sciences	0	0.00%	0	0.00%
Social sciences and related fields	20	12.90%	0	0.00%
Other and/or no specialization	0	0.00%	0	0.00%
Total people with post secondary qualifications	155	100.00%	145	100.00%
Females with post-secondary qualifications	75	48.39%	80	55.17%
Males with post-secondary qualifications	80	51.61%	65	44.83%

Source: Statistics Canada 1996 & 2001 Census (numbers may not add up due to rounding)

## Labour Force

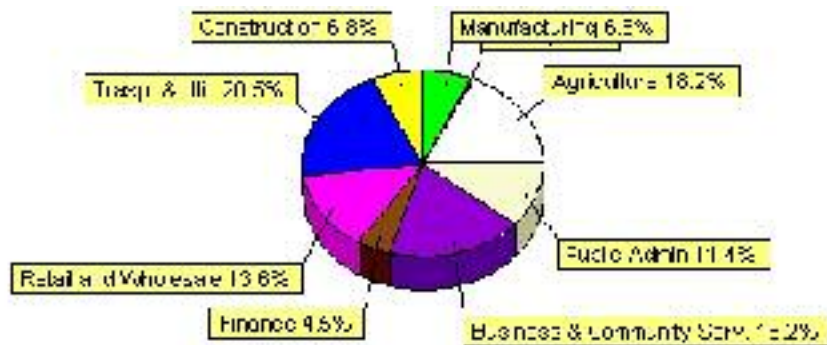
Labour force by activity	1996	2001
In the labour force, both sexes	195	220
Not in the labour force, both sexes	135	95
Total population 15 and over	335	320
Employed, both sexes	195	215
Unemployed, both sexes	0	10
Participation rate, both sexes	58.00%	69.00%
Unemployment rate, both sexes	0.00%	5.00%

Source: Statistics Canada 1996 & 2001 Census (numbers may not add up due to rounding)

Labour Force by Industry Division	1996	% of total	2001	% of total
Agriculture	15	7.69%	40	18.18%
Mining	10	5.13%	0	0.00%
Manufacturing	0	0.00%	15	6.82%
Construction	0	0.00%	15	6.82%
Transportation. & Utilities	40	20.51%	45	20.45%
Retail and Wholesale	45	23.08%	30	13.64%
Finance	10	5.13%	10	4.55%
Business & Community Services	55	28.21%	40	18.18%
Public Administration	25	12.82%	25	11.36%
Total All Industries	195	100.00%	220	100.00%

Source: Statistics Canada 1996 & 2001 Census (numbers may not add up due to rounding)

### Warner Labour Force By Industry - 2001



Labour Force by Major Occupational Groups	1996	%	2001	%
Management occupations	10	5.26%	35	15.91%
Business, Finances and administrative occupations	40	21.05%	35	15.91%
Natural and applied sciences and related occupations	0	0.00%	10	4.55%
Health occupations	0	0.00%	10	4.55%
Occupations in social science; education; government and religion	10	5.26%	0	0.00%
Occupations in art; culture; recreation and sport	10	5.26%	0	0.00%

Sales and service occupations	40	21.05%	40	18.18%
Trades; transport; equipment operators and related occupations	50	26.32%	45	20.45%
Occupations unique to primary industry	20	10.53%	45	20.45%
Occupations unique to processing; manufacturing and utilities	10	5.26%	0	0.00%
Occupations not elsewhere classified	0	0.00%	0	0.00%
Total - All Occupations (major groups)	190	100.00%	220	100.00%
Females - All Occupations	95	50.00%	105	47.73%
Males - All Occupations	95	50.00%	120	54.55%

Source: Statistics Canada 1996 & 2001 Census (numbers may not add up due to rounding)

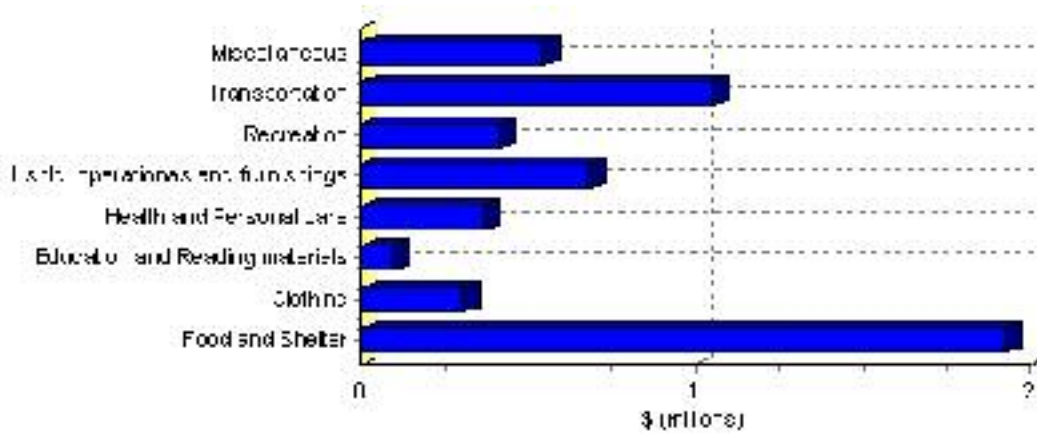
---

# Family Expenditure

Expenditure Category	1992	% of total	1996	% of total
Food and Shelter	\$1,609,245	38.26%	\$1,930,638	35.77%
Clothing	\$265,735	6.32%	\$307,641	5.70%
Education and Reading materials	\$74,430	1.77%	\$97,969	1.82%
Health and Personal care	\$263,150	6.26%	\$364,644	6.76%
Hshld. operations and furnishings	\$458,200	10.89%	\$681,985	12.64%
Recreation	\$314,335	7.47%	\$414,481	7.68%
Transportation	\$862,420	20.50%	\$1,053,020	19.51%
Miscellaneous	\$356,180	8.47%	\$546,311	10.12%
Total Current Consumption	\$4,206,305	100.00%	\$5,396,689	100.00%
Total # of Households	170		179	
Average Consumption per Household	\$24,743		\$30,149	

Source: Statistics Canada Family Expenditure Survey 1992 & 1996 (numbers may not add up due to rounding).

## Warner Family Expenditures (1996)

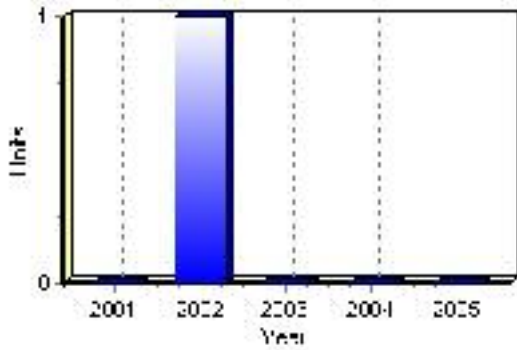


# Building Permits

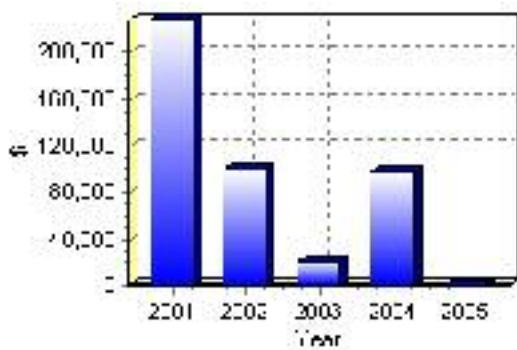
Total Building Permit Values	2001	2002	2003	2004	2005
Building Permits Value, Commercial	\$120,000	\$0	\$0	\$83,000	\$0
Building Permits Value, Industrial	\$0	\$0	\$0	\$0	\$0
Building Permits Value, Institutional	\$108,000	\$0	\$0	\$0	\$0
Building Permits Value, Residential	\$0	\$100,000	\$20,000	\$15,000	\$0
Building Permits Value, Total	\$228,000	\$100,000	\$20,000	\$98,000	\$0
Total Housing Starts	0	1	0	0	0

Source: Statistics Canada 2000-2004 Building Permits (numbers may not add up due to rounding)

## Total Housing Starts



## Value of Building Permits



## Dwellings

<b>Occupied Private Dwellings by Type</b>	<b>1996</b>	<b>% of total</b>	<b>2001</b>	<b>% of total</b>
Apartments	10	5.71%	5	2.94%
Detached Duplexes	0	0.00%	5	2.94%
Movable Dwellings	10	5.71%	15	8.82%
Other single attached house	0	0.00%	0	0.00%
Row and semi-detached house	20	11.43%	5	2.94%
Single-detached house	160	91.43%	150	88.24%
Total number of occupied private dwellings	175	100.00%	170	100.00%
Private dwellings, owned	120	68.57%	140	82.35%
Private Dwellings, rented	55	31.43%	30	17.65%

Source: Statistics Canada 1996 & 2001 Census (numbers may not add up due to rounding)

<b>Private Dwellings by Period of Construction</b>	<b># of Dwellings</b>	<b>% of total</b>
Period of construction, before 1946	65	37.14%
Period of construction, 1946 - 1960	50	28.57%
Period of construction, 1961 - 1970	15	8.57%
Period of construction, 1971 - 1980	25	14.29%
Period of construction, 1981 - 1990	10	5.71%
Period of construction, 1991 - 2001	10	5.71%
Total number of private dwellings constructed	175	100.00%

Source: Statistics Canada 2001 Census (numbers may not add up due to rounding)

Disclaimer: Information in this profile has been provided from a variety of external sources. Although every effort has been made to ensure the accuracy, currency and reliability of the content and data, AlbertaFirst.com Ltd. accepts no responsibility in this regard.

© AlbertaFirst.com Ltd., 2006.