

# Rainbow Lake

[www.rainbowlake.ca](http://www.rainbowlake.ca)

## Welcome

**Welcome** You are in a community that presents itself to visitor and resident alike in a prideful manner. Beautification and the clean-ups have dramatically changed the perception and attitudes of our citizens. Rainbow Lake is permanent home to 1200 people; but they are not always the same 1200 people. There is a core group of pioneers who have lived and worked here for over thirty years - right from the era when the discovery wells were brought on line and people were needed to drill, produce, and develop the infrastructure to one of Alberta's major petroleum developments of the 60's. These folks brought their families, spurring the evolution of a camp complex to a modern town, with the cultural, educational, recreational, and municipal services that are expected in a thriving Alberta community today. The next most senior group is the families who moved here in the 80's, again in response to the need to further develop the patch. These are the people who came here for a job, but stayed here for reasons so much more fundamental: they enjoy the opportunity to work in state of the art technologies: they appreciate living in a community where every single person counts; they love living in an environment where access to wilderness and nature is literally a minute's walk from any house in town.

People who move to town for career advancement and stay five or six years. These people bring with them fresh ideas, energy and drive to make changes for the better in our community.

Some folks choose to live in town who are in non-oil patch related work; commercial, forestry, educational and service sectors. These people bring a wider perspective and experience to the community.

Also we have a continual flow of people into town, or through town, who are here for a few weeks or a day. They may be Engineers who contribute to reservoir development, drilling crews on a rig, or Grandparents up to see the newest addition to their family. All the individuals in town, no matter how long they stay, have the ability to impact the quality of life here. Whatever their passion, there is the opportunity to contribute to the community.

Mayor John Watt



## Area Overview

The Town of Rainbow Lake was incorporated as a "New Town" in 1966. It has grown and developed rapidly over the last few years. It is located 918 km Northwest of Edmonton, and 138 km West of High Level on Highway 58.

## Climate

Residents enjoy some of the most spectacular displays of the northern lights during winter months, scenic snowfalls, and extended daylight hours in the summer, rainbows, and a fairly moderate climate throughout most of the year. To see what the weather

conditions are in Rainbow Lake today visit a [Rainbow Lake weather](#)

## Community Services

In The Rainbow Center you find hotel rooms, a large coffee shop, a lounge, a tavern, a laundry mat, a gift/drugstore where prescriptions are sent out from High Level, photo developing, the Sears depot, magazines, school and office supplies, etc. Rainbow Transport and a 2 bay car wash.

Rainbow Lake has a variety of businesses. A majority are home based, including candle sales, incense, beauty products, crafts, fabrics, and quilting classes, kitchen and household utensils. We are lucky to have massage therapy and wellness therapies available here as well. There are also several bookkeepers, tax preparers and an accountant in town.

The industrial area is a hub of oilfield related businesses, like camps, heavy equipment, and construction businesses, trucking companies, welders, sandblasting and painting, landscapers, plumbers, electricians, gas fitters, home repair and much more. It may look like a small town at first glance but you will find as you spend a bit of time here that there is really not a lot missing in term of necessary services.

There are a number of community facilities and organizations available in Rainbow Lake. The Multi-Use Facility was opened in 1994 and houses the Dance Hall, Public Library, Health & Fitness Club, Curling Lounge, Concession Stand, Meeting Rooms, Three (Seasonal) Curling Sheets and a new Ice Arena. The Multi Use Facility is located at 1 Atco Road. A Youth Group is currently being operated out of the Youth Center. Other programs supported by FCSS include: the Summer Fun Program, Community Night and Steamblowers.

### **Communities in Bloom**

Congratulations – We became a Two-Bloom Community. This first year of Communities in Bloom in Rainbow Lake was learning and growing experience for the whole town. In the past the community has done some clean-up including;

- spruce trees along Rainbow Drive
- Increased community participation
- Addition of more planters
- Beautification of Devonian park
- Christmas Lighting program
- Recycling depot and program
- Reduction of the fire hazard through the cleanup of all green zones

### **Religious Services**

Rainbow Lake has many unique features. One is the use of one church for all fellowships and denominations. The building is owned by the Catholic Diocese and designated as a community church. The building was rebuilt in 1999 after a fire destroyed the original building. You will find yourself welcome at any of the services. The contact list will provide you with a name to find out when your preferred service is held.

## Community Lifestyle

### **Recreation Center**

The hub of recreation all year long; The Multi-Use Facility houses the Health and Fitness area, library, curling club, lounge, skating and curling rink, meeting rooms, and large hall with kitchen facilities for meetings, dances, and banquets. The ball diamonds are situated just outside the area complex. It is located in the down town area across from the health unit. In addition to the baseball diamonds and recreation center there is a tennis court and area for shooting baskets with friends. This area is free to use anytime and is maintained by the town. Residents make their own fun as well. This year a beach volley ball area was set up in the parking lot of the Rainbow center. Biking, quading, roller-blading and snowmobiling are some of the activities that you can find for your family to enjoy. There is also a walking path in progress for those who enjoy a leisurely stroll any time of day.

### **Children's Center**

This brand new facility was constructed by the Town to provide a dedicated building for child and youth programs. Its unique construction provides toddler through pre-teen space and furnishings on one side of the facility, and an area more suited to older

youth on the other side. The Nursery School and the Youth Center are the prime tenants, with every child-oriented program encouraged to cooperate in using the structure.

### **Golf Course**

This is more than just a place for golfers. The clubhouse is open for public dining in their lounge. It is a comfortable place for breakfast, lunch, dinner or a coffee or cool one with friends. The 9-hole course is always well maintained and a significant amount of work has been done over the last few years. It is situated on municipal land but is operated by a volunteer executive.



### **Economic Base**

Oil and Gas has been a lucrative industry in Northwest Alberta since the discovery of a major oil field in Rainbow Lake in 1965. Husky Oil operates a large natural gas plant near Rainbow Lake and co-owns/operates a co-generation facility with Atco Power. The estimated regional production volumes for 2002 included 11.8 million barrels of oil. This accounted for 5.1 percent of oil production in Alberta.



### **Education**

The school provides education for ECS to grade 12. The school currently serves a student population of approximately 220. This year the enrollment is made up of 131 elementary students and 74 at the junior and senior high level. Classroom teachers teach all students the basic subjects' areas. Correspondence courses are taken only by choice. Currently, teleconferencing is offered to extend the course selection beyond what we would be able to offer a small student population. Videoconferencing is targeted to replace teleconferencing in the upcoming fall.

School facilities include a library, gymnasium, science lab, computer lab, small kitchen/concession, outdoor track and ball diamond, soccer field and playground. We maintain an annual calendar, newsletter and web site, which includes the monthly staff list which can be accessed through [www.fvsd.ab.ca](http://www.fvsd.ab.ca) Mr Gregg McNeil is the Principal for the Rainbow Lake School and may be reached at:

P.O. Box 116  
Rainbow Lake, AB

T0H 2Y0  
Phone: (780) 956-3851  
Fax: (780) 956-2352

The school opened in 1968 with two portable units. There were 4 classrooms and grades 1-6.

A nursery school is operated as a society and provides early interaction for three to five year olds.

Rainbow Lake Nursery School

- (780) 956-3990
- A Society operated Nursery School
- Held in the Community Center.
- Gives three & four year olds an opportunity to interact with other children with games, crafts, and story time.

Summer Fun programs as well as the Youth Center provide supervised entertainment and recreation for our young people. The Youth Center is open year round for after school and evening early intervention and supervised fun.

## Emergency Services

### **Policing**

The town has a resident R.C.M.P, though we are serviced out of the Assumption detachment. There is an office located at the Airport.

Phone: 1 (780) 956-3230

## Health Care

Dental clinics are held on a regular basis, with a dentist coming into the community for the clinics at a permanent dental facility.

The Health Unit includes a meeting room (previously Silver Birch) as well as treatment rooms & covered emergency entrance. A newly renovated, modern clinic is part of Northwestern Health Services Region. A doctor makes regular visits, usually once a week. There are full time nurses on staff and most community health services are provided here. We are fortunate to have both an ambulance services and fire department. Both are funded by the municipality and operated by volunteers within the community.

## Key Contacts for Business Development

### **Municipal**

Town of Rainbow Lake  
PO Box 149  
Rainbow Lake AB  
T0H 2Y0  
Tel: (780)956-3934  
Fax: (780)956-3570  
[rainbowlake@telusplanet.net](mailto:rainbowlake@telusplanet.net)

John Watt, Mayor  
Box 155  
Rainbow Lake, AB  
T0H 2Y0  
(780) 956-8723

Grant Dixon  
Chief Administrative Officer  
Box 149

Rainbow Lake, AB  
T0H 2Y0  
(780) 956-3934

Rainbow Lake Chamber of Commerce  
Box 272  
Rainbow Lake, Alberta  
T0H 2Y0  
Phone: 780-956-3030  
Fax: 780 956-3882  
[tschulter@rainbowcable.ca](mailto:tschulter@rainbowcable.ca)  
[www.rlchamber.com](http://www.rlchamber.com)

## **Regional Contact**

Mackenzie Economic Development Corporation  
Box 210  
High Level, Alberta  
T0H 1Z0  
Tel: (780) 926-4233  
or 1-888-922-4233  
Fax: (780) 926-2162  
[info@medc.ab.ca](mailto:info@medc.ab.ca)  
[www.medc.ab.ca](http://www.medc.ab.ca)

Regional Economic Development Initiative for Northwest Alberta  
Box 210  
High Level, Alberta  
T0H 1Z0  
Tel: (780) 926-7314  
Fax: (780) 926-2161  
[info@rediregion.ca](mailto:info@rediregion.ca)  
[www.rediregion.ca](http://www.rediregion.ca)

## **Provincial** (Updated March 2006)

Michael Cheeks, Regional Manager  
Alberta Economic Development Postal Bag 900 - 3  
105 Provincial Building  
9626 - 96 Avenue  
Peace River, Alberta  
T8S 1T4  
Tel: (780) 624-6114  
Fax: (780) 624-6490  
[michael.cheeks@gov.ab.ca](mailto:michael.cheeks@gov.ab.ca)

Frank Oberle  
Member of the Legislative Assembly [MLA]  
Peace River Constituency

Constituency Office  
P.O. Box 6299  
10003 - 99 Avenue  
Peace River, AB  
T8S 1S2  
Phone: (780) 624-5400  
Fax: (780) 624-5464

[peace.river@assembly.ab.ca](mailto:peace.river@assembly.ab.ca)

Legislature Office  
513 Legislature Building  
10800 - 97 Avenue  
Edmonton, AB  
T5K 2B6  
Phone: (780) 427-1843  
Fax: (780) 427-1835

### **Federal**

Chris Warkentin  
Member of Parliament  
Peace River Constituency

Parliamentary Address  
House of Commons  
Ottawa, Ontario  
K1A 0A6  
Telephone: (613) 992-5685  
Fax: (613) 947-4782  
E-Mail: [Warkentin.C@parl.gc.ca](mailto:Warkentin.C@parl.gc.ca)

Constituency Address  
207 - 10605 West Side Drive  
Grande Prairie, Alberta  
T8V 8E6  
Telephone: (780) 538-1677  
Fax: (780) 538-9257

### **Community Groups and Contacts**

- Black Gold Snowmobile - Jocelyn Allison Phone: 780-956-3643
- [Chamber of Commerce - Boyd Langford Phone: 780-956-3979](#)
- Church of Hope - Michelle Kelly Phone: 780-956-3382
- Co-ed Volleyball - Lisa Boles Phone: 1 780-956-3051
- Girl Guides of Canada - Rhonda Drover Phone: 780-956-3060
- Husky Social Committee - Perry Hilkowich Phone: 780-956-3626
- Ladies Fitness - Darla Nielsen Phone: 780-956-3397
- R L Young Anglers - Nancy Towers Phone: 780-956-3375
- R L Christian Fellowship - Jim Zeiben Phone: 780-956-2977
- R L Communities in bloom - Grace Dimond Phone: 780-956-3691
- R L Curling Association - Penny Murray Phone: 780-956-3099
- R L Dart Club - Shirley Gosling Phone: 780-956-3982
- R L Duck Unlimited - Shirley Gosling Phone: 780-956-3982
- R L Golf & Country Club - Ian Ratcliffe Phone: 780-956-5676
- R L Health Club - Harold Norberg Phone: 780-956-2297
- R L Minor Hockey - Harold Norberg Phone: 780-956-2297
- R L Nursery School - Peggie Barnhill Phone: 780-956-3889
- R L Oilmen's Association - Jim Stewart Phone: 780-956-2900
- R L Oilwives - Marlane Quinton Phone: 780-956-3189

- R L Rec Hockey - Andy Poggenpohl Phone: 780-956-3816
- R L Skating Club - Tammy Pearson Phone:780-956-3089
- R L Slow Pitch - Jim Weinmeier Phone: 780-956-3760
- R L Youth Center - Darlene Harris Phone: 780-956-3228
- St Peter & St Paul Catholic Church- Gigi Alarcon Phone: 780-956-3432
- Steamblowers - Nicole Timmerman Phone: 780-956-3398
- T.O.P.S - Rhonda Drover Phone: 780-956-3060

## Annual Events

- Annual Christmas tree Lighting
- Annual town clean-up
- Boxing Day family fun spiel
- Canada Day parade and celebration Church of Hope flea market
- Community Night
- Duck Unlimited supper and auction
- Figure skating carnival
- Glow ball tournaments
- Hockey tournaments
- Ladies Night out
- Annual Father's Day fish derby
- Men's ladies and junior golf tournament
- Oilmen's curling bonspiel Oilmen's golf tournament
- RCMP regimental ball
- Red eye slow pitch tournament
- School Christmas concert
- School craft and bake sale
- Snowmobile rally

## In Closing

“Whether you are planning to move here, or just coming for a visit, come with your eyes and mind open. It is with this attitude that you will see ALL that is here just for the asking. Rainbow Lake is a place of beauty, abundance and strength that I had never found in the many communities I lived in prior to this one.” Julie Melville

## Taxation

	<u>Residential/Farmland</u>	<u>Non-Residential</u>
<b>2005</b>		
Municipal Tax Rate	10.1760	10.1760
Education - Alberta School Foundation Fund Tax Rate	4.6590	6.6730
Seniors Lodge Accommodation Tax Rate	.2070	.2070

## Transportation

The Airport is the hub of quick travel in and out of the community. There are scheduled flights and chartered flights available with direct flights to Edmonton. The schedules change; therefore you are advised to check with the airlines for bookings and reservations well in advance.

Central Mountain Air  
Phone: 780 956-3900  
or 1 888 865-8585

Highway 58 West joins the rest of the Provincial Highway system at High Level.

## Utilities

### **Electrical Power**

Atco Electric  
Box 298, Rainbow Lake, AB  
T0H 2Y0  
Phone: 1 (780) 956-8117  
24 Hour emergency 1 (800) 668-5506  
Customer Billing 1 (800) 668-2248

### **Natural Gas**

Town of Rainbow Lake  
Box 49 Rainbow Lake, AB  
T0H 2Y0  
Phone:1 (780) 956-3934

### **Telephone**

Telus Residential Services  
310-2255  
Internet Services 310-4638

### **Water Supply**

Surface water is collected in a reservoir that has enough volume for an eighteen-month supply. This reservoir is equipped with aeration to impede stratification and algae bloom. The existing water treatment plant has served the community since 1974, and construction of a new, state of the art membrane plant is scheduled for 2005. This project will also include treated water storage and delivery pressure stabilization. Current pricing structure for water consumed in town is a monthly fee of \$30.00 for service including 40m<sup>3</sup> of water. Each additional cube is \$1.45. Bulk water for delivery outside the municipality is \$6.67 per cubic meter.

### **Waste Management**

Rainbow Lake is a member of the Mackenzie Regional Waste Commission. Garbage is collected at the local transfer site and trucked to the regional landfill near High Level. Residential pickup is made every Wednesday at the cost of \$15.00 per month.

Sewage fees are pegged at 20% of the price of the water invoice. Bulk sewage disposal is \$100.00 per truck load up to 16m<sup>3</sup> each load.

Personal recycling initiatives are satisfied by bottle collecting fundraisers with transportation to the facility in High Level.



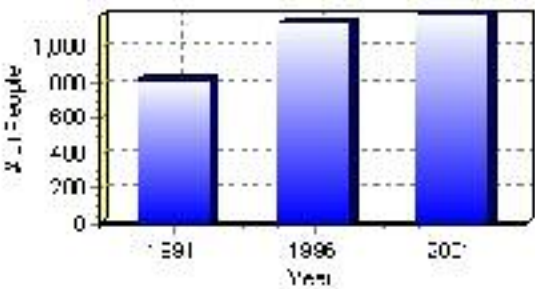
# Population

## Total Population

Population 2004*	1,186
Population 2003*	1,186
Population 2002*	1,186
Population 2001**	975
Population 2000*	1,138
Population 1996**	1,138
Population 1991**	817
Population % change 1991-1996	28.21%
Population % change 1996-2001	4.05%

\* Source: Official Population List, Alberta Municipal Affairs  
\*\* Source: Statistics Canada 1991, 1996, & 2001 Census

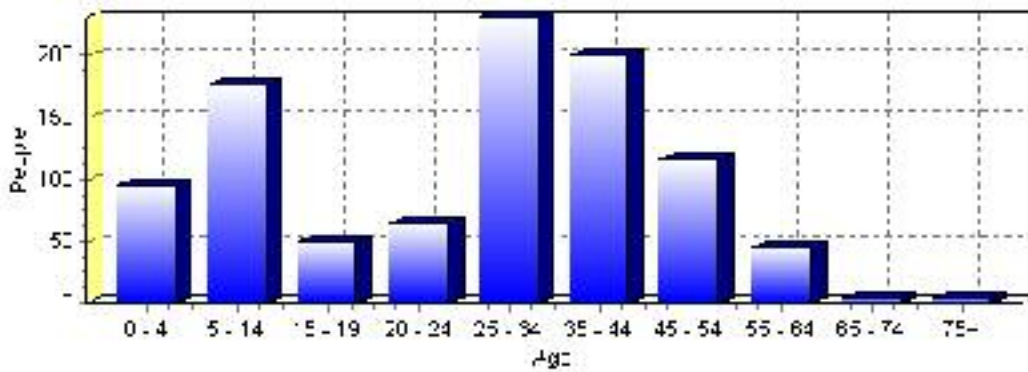
## Total Population 1991-2001



Population by Age and Gender	1996 Male	1996 Female	1996 Total	2001 Male	2001 Female	2001 Total
Age 0 - 4	95	70	165	55	40	95
Age 5 - 14	100	110	210	105	70	175
Age 15 - 19	35	20	55	25	25	50
Age 20 - 24	55	50	105	35	30	65
Age 25 - 34	135	120	255	120	110	230
Age 35 - 44	120	90	210	110	90	200
Age 45 - 54	60	45	105	70	45	115
Age 55 - 64	15	5	20	20	25	45
Age 65 - 74	5	0	5	5	0	5
Age 75 and older	0	0	0	0	5	5
Total All Persons	620	515	1,135	545	430	975

Source: Statistics Canada 1996 & 2001 Census (numbers may not add up due to rounding)

### Rainbow Lake Population by Age Group (2001)



## Education Statistics

Highest level of schooling for Population 20yrs and older	2001	%
People without high school certificates	155	23.31%
People with high school certificates	135	20.30%
People with trades or non-university certificate or diploma	220	33.08%
People with post-secondary education (not completed)	90	13.53%
People with university diploma/certificate	0	0.00%
People with university degree	55	8.27%
Total Population 20 years and older	665	100.00%

Source: Statistics Canada 2001 Census (numbers may not add up due to rounding)

### Rainbow Lake Highest Level of Schooling 2001



Population with Post Secondary Qualifications	1996	%	2001	%
Agriculture and biological sciences	10	3.03%	0	0.00%
Commerce, management and business administration	55	16.67%	45	15.79%
Educational, recreational and counseling services	15	4.55%	35	12.28%
Engineering and applied science tech. and trades	170	51.52%	130	45.61%
Engineering and applied sciences	20	6.06%	0	0.00%
Fine and applied arts	10	3.03%	10	3.51%
Health professionals, science and technologies	25	7.58%	40	14.04%
Humanities and related fields	0	0.00%	0	0.00%
Mathematics and physical sciences	0	0.00%	20	7.02%
Social sciences and related fields	10	3.03%	10	3.51%
Other and/or no specialization	0	0.00%	0	0.00%
Total people with post secondary qualifications	330	100.00%	285	100.00%
Females with post-secondary qualifications	130	39.39%	105	36.84%
Males with post-secondary qualifications	200	60.61%	180	63.16%

Source: Statistics Canada 1996 & 2001 Census (numbers may not add up due to rounding)

## Labour Force

Labour force by activity	1996	2001
In the labour force, both sexes	650	610
Not in the labour force, both sexes	105	100
Total population 15 and over	755	710
Employed, both sexes	600	575
Unemployed, both sexes	50	30
Participation rate, both sexes	86.00%	86.00%
Unemployment rate, both sexes	7.00%	5.00%

Source: Statistics Canada 1996 & 2001 Census (numbers may not add up due to rounding)

Labour Force by Industry Division	1996	% of total	2001	% of total
Agriculture	10	1.56%	0	0.00%
Mining	270	42.19%	165	27.05%
Manufacturing	45	7.03%	75	12.30%
Construction	60	9.38%	80	13.11%
Transportation. & Utilities	40	6.25%	70	11.48%
Retail and Wholesale	60	9.38%	35	5.74%
Finance	0	0.00%	10	1.64%
Business & Community Services	105	16.41%	140	22.95%
Public Administration	15	2.34%	25	4.10%
Total All Industries	640	100.00%	610	100.00%

Source: Statistics Canada 1996 & 2001 Census (numbers may not add up due to rounding)

### Rainbow Lake Labour Force By Industry - 2001



Labour Force by Major Occupational Groups	1996	%	2001	%
Management occupations	55	8.59%	40	6.61%
Business, Finances and administrative occupations	90	14.06%	85	14.05%
Natural and applied sciences and related occupations	65	10.16%	75	12.40%
Health occupations	0	0.00%	20	3.31%
Occupations in social science; education; government and religion	30	4.69%	40	6.61%
Occupations in art; culture; recreation and sport	10	1.56%	0	0.00%

Sales and service occupations	105	16.41%	115	19.01%
Trades; transport; equipment operators and related occupations	100	15.63%	90	14.88%
Occupations unique to primary industry	45	7.03%	70	11.57%
Occupations unique to processing; manufacturing and utilities	125	19.53%	75	12.40%
Occupations not elsewhere classified	10	1.56%	0	0.00%
Total - All Occupations (major groups)	640	100.00%	605	100.00%
Females - All Occupations	215	33.59%	245	40.50%
Males - All Occupations	425	66.41%	365	60.33%

Source: Statistics Canada 1996 & 2001 Census (numbers may not add up due to rounding)

---

## Income

<b>Family Income (Number of Families)</b>	<b>1996</b>	<b>%</b>	<b>2001</b>	<b>%</b>
less than \$19,999	0	0.00%	10	4.65%
\$20,000 - \$39,999	35	12.50%	0	0.00%
\$40,000 - \$59,999	50	17.86%	35	16.28%
\$60,000 and over	195	69.64%	160	74.42%
Total number of families	280	100.00%	205	95.35%
Average family income	\$83,073		\$91,655	
Median family income	\$77,530		\$90,414	

Source: Statistics Canada 1996 & 2001 Census (numbers may not add up due to rounding)

<b>Household Income (Number of Households)</b>	<b>1996</b>	<b>%</b>	<b>2001</b>	<b>%</b>
less than \$19,999	10	2.74%	30	8.70%
\$20,000 - \$39,999	60	16.44%	25	7.25%
\$40,000 - \$59,999	60	16.44%	25	7.25%
\$60,000 and over	40	10.96%	260	75.36%
Total number of households	365	100.00%	345	100.00%
Average household income	\$77,733		\$84,210	
Median household income	\$73,280		\$83,838	

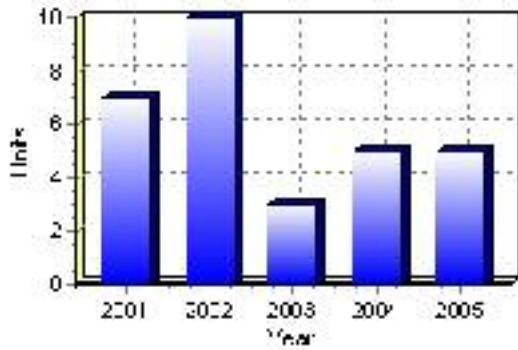
Source: Statistics Canada 1996 & 2001 Census (numbers may not add up due to rounding)

# Building Permits

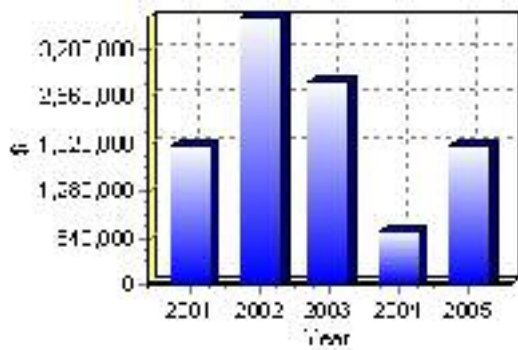
Total Building Permit Values	2001	2002	2003	2004	2005
Building Permits Value, Commercial	\$24,000	\$1,955,000	\$1,200,000	\$300,000	\$63,000
Building Permits Value, Industrial	\$478,000	\$200,000	\$981,000	\$87,000	\$1,200,000
Building Permits Value, Institutional	\$600,000	\$0	\$0	\$0	\$0
Building Permits Value, Residential	\$786,000	\$1,471,000	\$564,000	\$318,000	\$613,000
Building Permits Value, Total	\$1,888,000	\$3,626,000	\$2,745,000	\$705,000	\$1,876,000
Total Housing Starts	7	10	3	5	5

Source: Statistics Canada 2000-2004 Building Permits (numbers may not add up due to rounding)

## Total Housing Starts



## Value of Building Permits



## Dwellings

<b>Occupied Private Dwellings by Type</b>	<b>1996</b>	<b>% of total</b>	<b>2001</b>	<b>% of total</b>
Apartments	15	4.11%	5	1.45%
Detached Duplexes	0	0.00%	0	0.00%
Movable Dwellings	185	50.68%	120	34.78%
Other single attached house	0	0.00%	0	0.00%
Row and semi-detached house	60	16.44%	50	14.49%
Single-detached house	110	30.14%	170	49.28%
Total number of occupied private dwellings	365	100.00%	345	100.00%
Private dwellings, owned	115	31.51%	100	28.99%
Private Dwellings, rented	250	68.49%	240	69.57%

Source: Statistics Canada 1996 & 2001 Census (numbers may not add up due to rounding)

<b>Private Dwellings by Period of Construction</b>	<b># of Dwellings</b>	<b>% of total</b>
Period of construction, before 1946	0	0.00%
Period of construction, 1946 - 1960	0	0.00%
Period of construction, 1961 - 1970	20	5.88%
Period of construction, 1971 - 1980	30	8.82%
Period of construction, 1981 - 1990	125	36.76%
Period of construction, 1991 - 2001	165	48.53%
Total number of private dwellings constructed	340	100.00%

Source: Statistics Canada 2001 Census (numbers may not add up due to rounding)



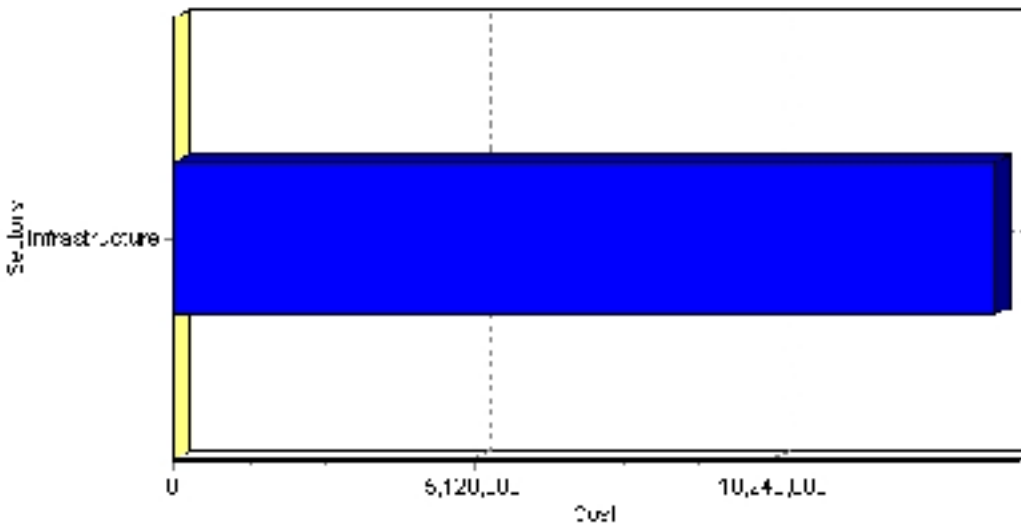
# Projects

## Summary of Projects in Rainbow Lake as of September 2006

Project Sector	Number of Projects	Project Cost
Infrastructure	1	\$14,000,000
Total	1	\$14,000,000

This inventory lists projects in Alberta that have recently been completed, are under construction, or are proposed to start construction. Not all projects are listed due to reasons of confidentiality and/or due to information not being available at the time of printing. Project data is obtained from public information sources, where possible, this data has been verified with the project proponent/developer, users of the Inventory may wish to confirm project data with the proponent/developer. The inventory does not breakdown project expenditures by any given year. The cost of a project is the value of expenditures expected over all phases of project construction, which may span over two or more years. Cost of projects listed in the Inventory are estimated values only. Source: Alberta Economic Development, 2004.

## Value of Projects by Sector (as of September 2006)



Project Status	Number of Projects	Project Cost
Under Construction	1	\$14,000,000
Total	1	\$14,000,000

This inventory lists projects in Alberta that have recently been completed, are under construction, or are proposed to start construction. Not all projects are listed due to reasons of confidentiality and/or due to information not being available at the time of printing. Project data is obtained from public information sources, where possible, this data has been verified with the project proponent/developer, users of the Inventory may wish to confirm project data with the proponent/developer. The inventory does not breakdown project expenditures by any given year. The cost of a project is the value of expenditures expected over all phases of project construction, which may span over two or more years. Cost of projects listed in the Inventory are estimated values only. Source: Alberta Economic Development, 2004.

## Largest Projects in Rainbow Lake as of September 2006

Company Name	Project Description	Project Location	Project Cost	Construction Schedule	Status
Town of Rainbow Lake	Water Treatment Plant	Rainbow Lake	\$14,000,000	2006-2007	Under Construction

Disclaimer: Information in this profile has been provided from a variety of external sources. Although every effort has been made to ensure the accuracy, currency and reliability of the content and data, AlbertaFirst.com Ltd. accepts no responsibility in this regard.

© AlbertaFirst.com Ltd., 2006.