

Hanna

www.hanna.ca

Welcome

The Town of Hanna welcomes your interest in our community. Whether it be industrial, retail, tourism or retirement related, opportunity is abundant in Hanna.

Hanna takes pride in offering urban amenities with a country flair. The high quality of life is very evident here. People feel at home in Hanna -- knowing your neighbours has a lot to do with this. Add to that the impressive infrastructure including the schools and hospital, all newly renovated, and you can see Hanna is preparing for the future.

Residents of Hanna have always known the advantages of living here. Recreation is second to none for communities this size. From tennis to swimming to indoor racquet sports, Hanna offers it all for young and old. One mile west of town are Helmer Dam and Fox Lake, sites of some of the best fishing you'll find. Around twenty miles to the southeast is Prairie Oasis Park, a boater's paradise.

Business Development in Hanna is approached as a combined effort with the Town of Hanna and the Chamber of Commerce. Its mandate is to promote economic activity within the Hanna trading area by supporting existing businesses, encouraging new companies and providing information and support to up and coming entrepreneurs.

Thank you for your consideration of the Town of Hanna. Let us know how we may be of service to you. Please feel free to contact us at admin@hanna.ca.

Mayor and Council



Mayor Pat Burns

Area Overview

Hanna is located in East-Central Alberta approximately 2 hours north-east of Calgary. A community of 3,000, Hanna offers the amenities of an urban centre and the comfortable lifestyle of a rural town.

Hanna is known as the main market, educational, medical and administrative centre of a large trading area known as the "short grass country". The Town is comprised of a blend of over 200 industrial, retail, hospitality and service businesses. Known primarily as an agricultural service centre in the past, oil & gas activity and the construction of a coal-powered electricity generating station in the area have had a huge beneficial impact on the community.

Strategically located at the junction of two major highways, Hanna features rail access and an airport with a 3,500 foot runway. The town also offers numerous recreational opportunities to suit any taste including a 9-hole golf course and water sports on nearby lakes. For years, Hanna has been known as the Home of the Canada Grey Goose, and it is still a favourite spot for hunters from all over North America.

Some key advantages of living and/or doing business in Hanna include:

- quality of life -urban amenities with a country flair
- safe with little or no crime - friendly people
- location - junction of Highway 9 and Highway 36
- fiscal management - local municipal mill rate remains stable with very little increase. Hanna is one of a few communities with a surplus resulting in long-term stability.



Hanna is Home of the Canada Grey

Climate

Alberta has a moderate climate that enjoys four distinct seasons, including warm summers and mild Canadian winters. Precipitation averages 425mm (16.7") of which 150 mm (5.9") falls as snow. From May to September the mean rainfall averages 300mm (11.8") and is sufficient to assure a good crop. July is the month of maximum thunderstorm and hail activity. Individual snowfalls rarely exceed 15cm (6") and a snow depth of 30 cm (12") occurs on the average of once in 10 years.

Seasonal Average Temperature

- Summer 17.1C (62.8F)
- Spring 4.2C (39.6F)
- Fall 5.1C (41.2F)
- Winter -16.6C (2.1F)

Average Annual Precipitation

- Rain 32.5cm (12.8 in.)
- Snow 99.7cm (39.3 in.)
- Total 132.3cm (52.1 in.)

Frost Free Days

- 109 days per year.

Hours of Sunshine

- 2,263.7 hours of sunshine per year.

Community Services

Municipal

- Family and Community Support Services
- Hanna Municipal Library
- ParentLink
- Hanna Youth Club
- Hanna Youth Council

Provincial

- Agriculture
- Provincial Court
- Fish and Wildlife
- Medical Examiner-Coroner
- Mental Health Clinic
- Transportation
- Central Alberta Child and Family Services - Region 4

Federal

- Canada Post Office
- Royal Canadian Mounted Police
- Prairie Farm Rehabilitation Administration

Community Lifestyle

Community Groups & Organizations

Hanna is an active community hosting many volunteer groups and organizations that contribute greatly to the quality of life. Some of the cultural organizations include:

- The Hanna Dance Association
- The Hanna and District Performing Arts Association
- Stage Hanna & Stage Hanna Youth
- Yesteryear (Old Time Music)

Some of the recreational organizations include:

- Slo-pitch League
 - Football club
 - ATV club
 - curling club
 - figure skating club
 - gymnastics club and many more!
- Hanna also boasts many service & support clubs such as:
- The Lions

- Kinsmen and Kinettes
- T.O.P.S.
- The Royal Canadian Legion
- The Elks
- The Parent Support Group

Hanna is leading the way for community groups and organizations with it's online community portal: <http://www.aroundhanna.com>
This website provides residents with up to date news, information, events, and contacts about not for profit groups and organizations in Hanna.

Recreation

Hanna is an active community with a variety of recreational activities for all ages.

The **Hanna Agri-Sports Complex** houses the arena and is located at 501-3rd Street West. The facility contains one regulation ice surface and is utilized for various activities which include: horse & cattle shows, rodeo, hockey, figure skating, public skating, musical performances, & many other events.

Adjacent to the arena is the regulation size 6 sheet **Bill Matheson Memorial Curling Rink** providing residents of Hanna & surrounding areas with a great facility for curling. The rink is available for rent in the summer months and in the winter is home to the curling club offering a complete range of programs including recreational, competitive and youth activities. The club also offers concession and lounge facilities. Summer activities in the curling rink include Hanna Fall Fair, Hospital Auxiliary Rummage Sale, Bike Safety course, Antique Gun Show and Sale, Dances and 4-H Activities.

The Hanna & District Community Centre is operated by the Town of Hanna and is located at 503-4th Street West. This facility can accommodate a small or large gathering of people depending on your requirements. If you are planning a wedding, meeting, conference, stage production, dance, etc. please contact the Town Office for your booking needs. To view the floor plan of the community centre or for current rental rates, please visit the website at www.hanna.ca/comcent.htm.

The Hanna Swimming Pool is an outdoor facility used for various activities, including swimming lessons, public swimming, aqua fit classes, and organized swim activities. Located at 402-3rd Street West, the facility also boasts two wading pools rounding out the needs for all age groups. The pool or the wading pool can be rented for private use. The Town of Hanna is currently constructing a new outdoor pool, complete with a warm lesiure pool, regulation size 5 lane pool, diving tank, waterslide and spray park. The new pool will be open for the Summer Season of 2006.

The Hanna Skateboard Park was constructed in 2003. The Hanna Community Initiatives Association with support from the Community and the Town of Hanna partnered to design and develop one of the best SkateParks in the province. There is programming available at the park during the summer months, and new additions are being erected in the summer of 2005.

If you like to **Golf**, Hanna has two nine hole courses to choose from as well as an outdoor mini course at the Canada Grey Hotel.

The **Hanna Golf & Country Club Municipal Golf Course** has experienced two complete course redesigns and is currently being upgraded to 18 holes, which present golfers with multi-tiered greens and multiple tee-boxes on every hole. Each fairway is meticulously maintained, offering a variety of shot combinations for either the beginning or experienced golfer. Set in the heart of the rolling grasslands of East Central Alberta, the course is an oasis for local residents and tourists who come to play a challenging nine holes. The course, with water on five of the nine holes, has earned high praise for the professionally designed, superior quality greens. Most challenging is the par 5 number 7 hole, guarded by water in front and two strategically placed sand traps at back. Despite these obstacles, with a good tee shot around the dogleg and a follow-up to the green, a birdie is still possible for the long ball hitter. The Hanna course is open May though October and is host to several popular tournaments during the season. The atmosphere is friendly and welcoming and it's usually possible to walk right on without a reservation during weekdays. *Text courtesy*

of the *Hanna Herald* For more information about the Hanna Golf Club times and rates, please call (403)854-3722

The **Sunnynook Country Golf Course** is a 9 hole course located in beautiful southern Alberta only 25km south of Hanna on Highway 36. The licensed clubhouse, large barbeques and club and cart rentals are all available to you if you wish to host a special occasion or company event. Please call (403) 566-2437.

Additional recreation facilities include two tennis courts, six ball diamonds, football fields, & soccer fields.

Resort Areas

The following areas are all within a 45 minute drive with Fox Lake Park and Helmer Dam being a close 2 minutes from Town and Blood Indian Park being the farthest.

- - Fox Lake Campground
 - Helmer Dam
 - Museum Trailer Park
 - Hanna Inn R.V. Park
 - Prairie Oasis Park
 - Blood Indian Reservoir

The Town also boasts a Public Library holding a collection of over 25, 000 items.

Religious Services

There are 10 churches located in Hanna.

- - All Saints Anglican Church
 - Alliance Church
 - Bethel Evangelical Missionary Church
 - Church of Christ
 - First United Church
 - Jehovah's Witness
 - New Life Community Fellowship Church
 - Redeemer Lutheran Church
 - Seventh-day Adventist
 - St. George's Catholic Church

Special Annual Events & Attractions

Local Attractions:

- The Pioneer Museum
- Doll House Museum and Tea Room
- That Country Place Garden Tea Room
- Local Artist Murals
- Two of Albertas largest geese, one welcoming visitors at the east entrance, and another on the corner of 2nd Ave W and Palliser Trail.
- CNR Roundhouse - although currently privately owned, has been identified, of all the remaining roundhouse sites in the province, as having the best potential for public use.

Annual Events:

- Canada Day Celebrations (July 1st)
- Fall Fair (August of each year)
- Indoor Pro Rodeo (September of each year)
- Christmas Craft Sale (November of each year)
- Rummage Sale (Bi-annually - Fall and Spring)
- Gun and Antique Show & Old Time Music Jamboree (July of each year)
- Automobile Show and Shine (June of each year)
- Quilt and Craft Show (June of each Year)

Accommodations

Best Western Motor Inn	Canada Grey Hotel
Westview Motel	Dynasty Hotel
National Hotel	AB Cottage Rest Awhile Bed and Breakfast
That Country Place Bed & Breakfast	

Restaurants

JJ's Kitchen	Canada Grey Restaurant
Grey Goose Service	Food For Thought Deli
Hanna Inn Family Restaurant, Nicks	Hanna Pizza & Steak House
Lazy J Cafe	York Restaurant
Kentucky Fried Chicken	Doll House Tea Room
Westview Motel Restaurant	Subway Sandwich and Salads
A&W	Pizza Hut Express
Cactus Corner Restaurant	That Country Place Tea House



Hanna is a very safe place to raise your family.



Fox Lake Park



Hanna boasts a 9 hole golf course. Tee times are recommended but not generally needed.



The outdoor rink is a recent addition provided to supplement the indoor arena.



Bi-Annual Rock & Roll Reunion

Senior's Week Activities

(provided by Hanna Family and Community Support Services)



Community Services manages the Family and Community Support Services in Hanna. Senior's Week occurs every June.

Economic Base

Hanna is the agricultural service centre for a trading area population estimated at over 11,000 people. The Hanna trading area includes areas East along Highway 9 to the Saskatchewan border, South to the Red Deer River, North to the Halkirk Area and West to Drumheller.

Farming and ranching contributes to the economy, as does the large amount of oil & gas activity. The addition of a coal-powered electricity generating station has also played a large role in the local economy.

Natural resources in the area include thermal coal, clay, sand/gravel, oil, natural gas, and bentonite. Agricultural products include wheat, barley, rye, tame hay, oats, flax, canola, beef cattle, hogs, poultry, sheep, and lamb.



Oil & Gas activity as well as Agriculture are vital to the economy

Economic Facts

Major industry in the area includes electricity generation (ATCO Electric), mining (Luscar Ltd., Sheerness Mines), and oil & gas. The major industrial facility includes the Sheerness Generating Station, while the main manufactured goods include agricultural products, manufactured homes and absorbants.

Some major business sectors include government, finance, building contractors, insurance, real estate, retail, tourism, mechanics, and legal services.

Major Businesses Products/Services

- Luscar Ltd. Sheerness Mines(Mining)
- ATCO Power (Power Generation)
- Sorbitec (Absorbants)
- Prairie Land Regional Division (Public Education)
- David Thompson Health Region (Public Health Provider)
- Special Areas Administrative Offices

Financial Institutions

- Royal Bank
- Toronto Dominion Bank
- Alberta Treasury Branch
- Hanna Savings (a division of Chinook Credit Union)



Sheerness Generating Station



Luscar shop facilities with Sheerness Generating Station in the background.

Education

Hanna is part of the Prairie Land Regional School Division #25 headquartered in Hanna. **Prairie Land Regional School Division**
101 Palliser Trail
(403) 854-4481 Web site: www.plrd.ab.ca

Schools in Hanna include Hanna Primary School [K-3], and J.C. Charyk School [4-12].

The Primary School is located at 618 1st. Street East. Ph: (403) 854-3694.
Grades 4 - 12 are located within the J.C. Charyk School located at 7th Avenue West.
(403) 854-3642.

The Learning Centre

An Education, Career and Volunteer resource centre where FREE public access to computers and the internet is available to the public. Information may also be obtained regarding employment, local or distance education opportunities.

The Learning Centre
410 Centre Street, Provincial Building
Box 1255, Hanna, AB T0J 1P0
Phone: 403-854-2099
Fax: 403-854-4166
E-mail: info@hannalearning.com
Website: www.hannalearning.com

Hanna Public Library

The Hanna Library holds a collection of over 25,000 items as well as having access to over a million items through participation in the TRAC (Tri-Regional Area Consortium).
The Library offers full service with extended hours and free Public Access computers.
For those who are taking courses at any level, the Library is an excellent companion to your course materials. Visit the library website at www.town.ca/library

Daycare/Nursery

The Hanna Family Day Home assists families who need child care while working. 3-2-1 Playtime and Kiddies Korner Playschool are playgroups for preschoolers.

Athabasca University

Don't forget that Athabasca University delivers distance education to students around the world.

Hanna Primary offering grades K to 3 and J.C. Charyk School offering grades 4 to 12.

Emergency Services

All Emergency Services in Hanna are accessed by calling 911

Fire Protection

Hanna is served by a 24-member volunteer fire department Administration Ph: 403-854-4433

Police Services

Hanna is served by a 6-member local detachment of the Royal Canadian Mounted Police (RCMP).
Administration Ph.: 403-854-3393
www.hanna.ca/rcmp/

The Citizens On Patrol (COP) program works hard to keep Hanna a safe community.

Ambulance Services

Local ambulance service is provided by the Hanna and District Ambulance Society.

STARS Air Ambulance is available.
Administration phone: 403-854-3331



Mayor Pat Burns and the EMT's showing off their new ambulance



Hanna has a very active Volunteer Fire Department.

Health Care

Hanna and District Health Services boasts an 18 bed active facility that accommodates minor surgical/dental procedures, medical, obstetric for low risk mothers and babies, and palliative care. 24 hour emergency care is staffed with a registered nurse. Hanna Continuing Care has 65 beds one of which is dedicated for respite care.

The Hanna Community also boasts medical clinic, optometrist, dentist, chiropractor, 2 dentists, and registered massage therapist.



Hanna Health Care Complex houses the Health Unit, the Extended Care and Emergency Services.

Key Contacts for Business Development

Municipal

Town of Hanna
202 - 1 Street West
Box 430
Hanna, AB
T0J 1P0
Ph: 403-854-4433
Fx: 403-854-2772
em:admin@hanna.ca

The Director of Economic Development, Laurie Armstrong, and the Chief Administrative Officer, Geraldine Gervais, would be more than happy to help you with your business plans in Hanna. They can be contacted at the above address and phone number, or by clicking on their direct email addresses below.

Director of Economic Development	business@hanna.ca
Chief Administrative Officer	ggervais.cao@hanna.ca

Provincial (updated March 2005)

Alberta Economic Development	Deputy Premier
109 Provincial Building	Hon. Shirley McClellan
346-3 Street, S.E.	Minister of Finance
Medicine Hat, Alberta	Drumheller - Stettler Contituency
T1A 0G7	Room 224 Legislature Building
Tel: 403-529-3630	10800-97 Avenue
Fax: 403-529-3140	Edmonton, Alberta
Elvira Smid, Regional Manager	T5K 2B6
E-Mail: elvira.smid@gov.ab.ca	Tel: 780-427-8809
Gloria Filgas, Information Officer	Fax: 780-428-1341
E-mail: gloria.filgas@gov.ab.ca	E-mail: drumheller.stettler@assembly.ab.ca

Federal (updated May 2006)

Member of Parliament-Crowfoot, Alberta
SORENSEN, Kevin (Conservative)

Parliamentary Address

House of Commons
Ottawa, Ontario
K1A 0A6
Telephone: (613) 947-4608
Fax: (613) 947-4611
E-Mail: Sorenson.K@parl.gc.ca

Constituency Address

4945 - 50th Street
Camrose, Alberta
T4V 1P9
Telephone: (780) 608-4600 1-800-665-4358
Fax: (780) 608-4603
TTY:

E-Mail:

Location

Hanna is located at the junction of Highways 9 and Highway 36. Highway 9, along with the Canadian National Railway, is the major transportation route between Calgary and Saskatoon. Highway 36 is a major north/south route serving eastern Alberta from the U.S.A. border to Lac La Biche in the north. Hanna is 215 km northeast of Calgary, 304 km southeast of Edmonton and it is 330 km to the Coutts Border Crossing into the United States of America.



Hanna is strategically located at the junction of Hiways 9 and 36

Post Secondary Education

Post-secondary education is available at Red Deer Community College, Olds Agricultural College or Calgary-based institutions.

The Hanna Learning Center offers the Community Adult Learning Program continues to offer a wide variety of courses and programs to the community including: workplace safety, health, fitness, computer, personal, and career related courses. They also offer distance learning opportunities. They offer services from a number of universities including administering courses, supervising exams and helping distance learners apply for education at several colleges and universities throughout Alberta. The Learning Centre also delivers the Registered Apprentrice Program (RAP) for citizens interested in a career in the trades. To explore these options, visit www.hannalearning.com

Ph:(403) 854-2099

Taxation

Mill Rates (2005)

Residential and Farm Land 18.7246

Non-Residential 20.5977

The Canadian Federation of Independent Business (CFIB) released figures in February of 2004 that show Hanna is well ahead of other Alberta Towns & Cities when it comes to property taxes on small business.

The study was done to show that businesses pay higher property taxes in most Alberta cities than similarly-assessed residential properties.

Businesses in Hanna pay \$1.00 in taxes for every one dollar spent by residential properties. But that number goes up to \$5.33 for

Calgary and \$3.43 in Edmonton, the study found. This adds to the attraction of doing business in Hanna.

2005	Residential/Farmland	Non-Residential
Municipal Tax Rate	13.9800	13.9800
Education - Alberta School Foundation Fund Tax Rate	4.4044	6.2775
Seniors Lodge Accommodation Tax Rate	.3402	.3402

Transportation

Air Service

Hanna Municipal Airport has a 3,500 foot runway, a non-directional beacon, and all weather facilities. The nearest commercial and air freight services are at Calgary International Airport, 215 km southwest.

Rail Service

Hanna is served by Canadian National Railways.

Highways

The main east-west route is Highway 9, and the main north-south route is Highway 36. These Highways are Primary routes for both east/west and north.south trucking and transport.

Trucking Firms

Highway 9 Express Ltd.

Bus Services

Greyhound Bus Lines offers regularly scheduled intercommunity service.

Couriers & Taxis

Greyhound Courier Express, UPS, Loomis and Purolator Couriers. Taxi services in Hanna are provided by two local taxi companies.

Utilities

Service	Provider	Address	Telephone Number
Electrical Power	ATCO Electric	Administered out of Drumheller Office	1-800-668-2248
Natural Gas	Alta Gas Utilities	106-2nd Avenue East Hanna, Alberta	1-403-854-3654
Communications	Telus	411-1 Street SE Calgary, AB	310-2255
Internet Services	Telus	411-1 Street SE, Calgary AB	310-4638
	Netago	105 2 Ave W Hanna AB	1-800-542-7028
	Platinum Communications Corporation	#3 6110 1A Street SW	403-301-4590
Cellular Phone Services	Telus Mobility	411-1 Street SE, Calgary, AB	1-866-558-2273
	Rogers Wireless Inc.		1-403-854-2764

Town of Hanna

The Water, Sewer, Regional Waste Site and Garbage fees are all collected bi-monthly by the Town of Hanna. The minimum rates, effective March 2005 total \$80.00. The breakdown is as follows.

Water Supply - The source of water is the Red Deer River. The reservoir capacity, measured in treated substance, is 4,546,000 litres. The water is treated by the Henry Kroeger Regional Water Commission and is a regional service.

The bi-monthly usage rate for residential users is \$36.50 for the first 22 cubic metres, and \$1.75 per cubic metre for amounts thereafter.

Waste Management

- The sewage treatment rate for residential users is a flat rate of --\$11.50 bi-monthly.
- Winter use (Nov-Apr)
- Over 22 cubic meters of water used is an additional \$.20 (per cm)
- Summer use (May-Oct)
- Over 44 cubic meters of water used in an additional \$.20 (per cm).

Garbage - Residential garbage is collected weekly, while industrial and commercial garbage is collected as contracted, \$10.

Regional Waste Site - \$22.00

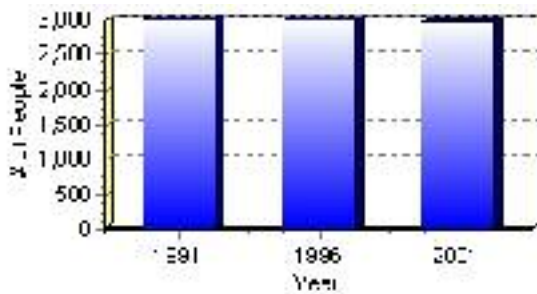
Population

Total Population

Population 2004*	2,986
Population 2003*	2,986
Population 2002*	2,986
Population 2001**	2,985
Population 2000*	3,001
Population 1996**	3,001
Population 1991**	2,996
Population % change 1991-1996	0.17%
Population % change 1996-2001	-0.50%

* Source: Official Population List, Alberta Municipal Affairs
** Source: Statistics Canada 1991, 1996, & 2001 Census

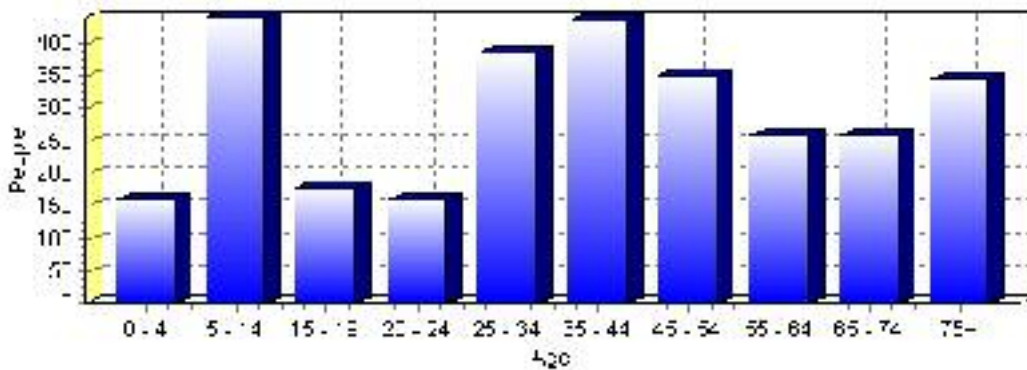
Total Population 1991-2001



Population by Age and Gender	1996 Male	1996 Female	1996 Total	2001 Male	2001 Female	2001 Total
Age 0 - 4	110	100	210	85	75	160
Age 5 - 14	230	200	430	255	185	440
Age 15 - 19	90	80	170	90	90	180
Age 20 - 24	85	95	180	75	85	160
Age 25 - 34	230	215	445	190	195	385
Age 35 - 44	230	210	440	235	200	435
Age 45 - 54	140	145	285	180	170	350
Age 55 - 64	110	110	220	120	140	260
Age 65 - 74	125	150	275	120	140	260
Age 75 and older	120	210	330	135	210	345
Total All Persons	1,495	1,510	3,005	1,480	1,505	2,985

Source: Statistics Canada 1996 & 2001 Census (numbers may not add up due to rounding)

Hanna Population by Age Group (2001)

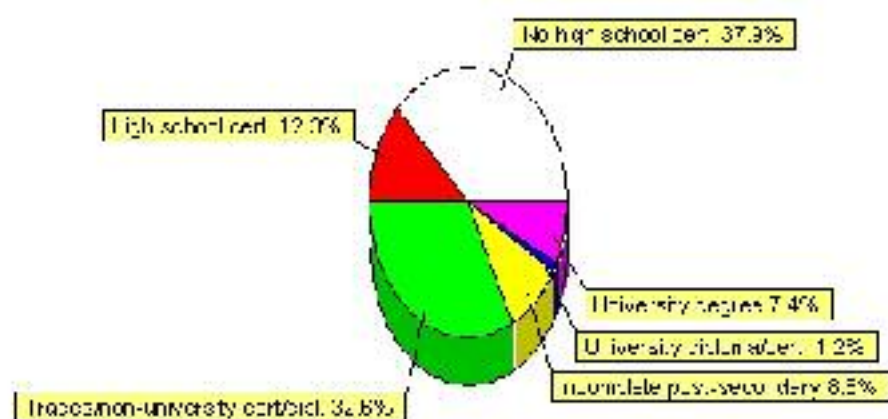


Education Statistics

Highest level of schooling for Population 20yrs and older	2001	%
People without high school certificates	815	37.91%
People with high school certificates	265	12.33%
People with trades or non-university certificate or diploma	700	32.56%
People with post-secondary education (not completed)	190	8.84%
People with university diploma/certificate	25	1.16%
People with university degree	160	7.44%
Total Population 20 years and older	2,150	100.00%

Source: Statistics Canada 2001 Census (numbers may not add up due to rounding)

Hanna Highest Level of Schooling 2001



Population with Post Secondary Qualifications	1996	%	2001	%
Agriculture and biological sciences	60	7.32%	55	6.15%
Commerce, management and business administration	100	12.20%	215	24.02%
Educational, recreational and counseling services	120	14.63%	145	16.20%
Engineering and applied science tech. and trades	310	37.80%	275	30.73%
Engineering and applied sciences	10	1.22%	0	0.00%
Fine and applied arts	45	5.49%	35	3.91%
Health professionals, science and technologies	120	14.63%	105	11.73%
Humanities and related fields	10	1.22%	30	3.35%
Mathematics and physical sciences	0	0.00%	10	1.12%
Social sciences and related fields	45	5.49%	10	1.12%
Other and/or no specialization	0	0.00%	0	0.00%
Total people with post secondary qualifications	820	100.00%	895	100.00%
Females with post-secondary qualifications	395	48.17%	435	48.60%
Males with post-secondary qualifications	425	51.83%	460	51.40%

Source: Statistics Canada 1996 & 2001 Census (numbers may not add up due to rounding)

Labour Force

Labour force by activity	1996	2001
In the labour force, both sexes	1,525	1,585
Not in the labour force, both sexes	725	705
Total population 15 and over	2,245	2,285
Employed, both sexes	1,450	1,535
Unemployed, both sexes	80	50
Participation rate, both sexes	68.00%	69.00%
Unemployment rate, both sexes	5.00%	3.00%

Source: Statistics Canada 1996 & 2001 Census (numbers may not add up due to rounding)

Labour Force by Industry Division	1996	% of total	2001	% of total
Agriculture	80	5.37%	95	6.07%
Mining	125	8.39%	125	7.99%
Manufacturing	35	2.35%	0	0.00%
Construction	115	7.72%	140	8.95%
Transportation. & Utilities	175	11.74%	145	9.27%
Retail and Wholesale	310	20.81%	355	22.68%
Finance	70	4.70%	45	2.88%
Business & Community Services	510	34.23%	575	36.74%
Public Administration	85	5.70%	85	5.43%
Total All Industries	1,490	100.00%	1,565	100.00%

Source: Statistics Canada 1996 & 2001 Census (numbers may not add up due to rounding)

Hanna Labour Force By Industry - 2001



Labour Force by Major Occupational Groups	1996	%	2001	%
Management occupations	125	8.45%	185	11.82%
Business, Finances and administrative occupations	180	12.16%	215	13.74%
Natural and applied sciences and related occupations	65	4.39%	55	3.51%
Health occupations	100	6.76%	85	5.43%
Occupations in social science; education; government and religion	80	5.41%	95	6.07%
Occupations in art; culture; recreation and sport	15	1.01%	15	0.96%

Sales and service occupations	405	27.36%	435	27.80%
Trades; transport; equipment operators and related occupations	335	22.64%	335	21.41%
Occupations unique to primary industry	115	7.77%	140	8.95%
Occupations unique to processing; manufacturing and utilities	60	4.05%	10	0.64%
Occupations not elsewhere classified	40	2.70%	10	0.64%
Total - All Occupations (major groups)	1,480	100.00%	1,565	100.00%
Females - All Occupations	665	44.93%	715	45.69%
Males - All Occupations	815	55.07%	860	54.95%

Source: Statistics Canada 1996 & 2001 Census (numbers may not add up due to rounding)

Income

Family Income (Number of Families)	1996	%	2001	%
less than \$19,999	35	4.93%	85	12.98%
\$20,000 - \$39,999	205	28.87%	180	27.48%
\$40,000 - \$59,999	210	29.58%	165	25.19%
\$60,000 and over	260	36.62%	225	34.35%
Total number of families	710	100.00%	655	100.00%
Average family income	\$54,043		\$58,169	
Median family income	\$52,018		\$58,903	

Source: Statistics Canada 1996 & 2001 Census (numbers may not add up due to rounding)

Household Income (Number of Households)	1996	%	2001	%
less than \$19,999	305	24.90%	280	22.58%
\$20,000 - \$39,999	335	27.35%	315	25.40%
\$40,000 - \$59,999	280	22.86%	235	18.95%
\$60,000 and over	110	8.98%	415	33.47%
Total number of households	1,225	100.00%	1,240	100.00%
Average household income	\$43,713		\$48,349	
Median household income	\$39,495		\$42,008	

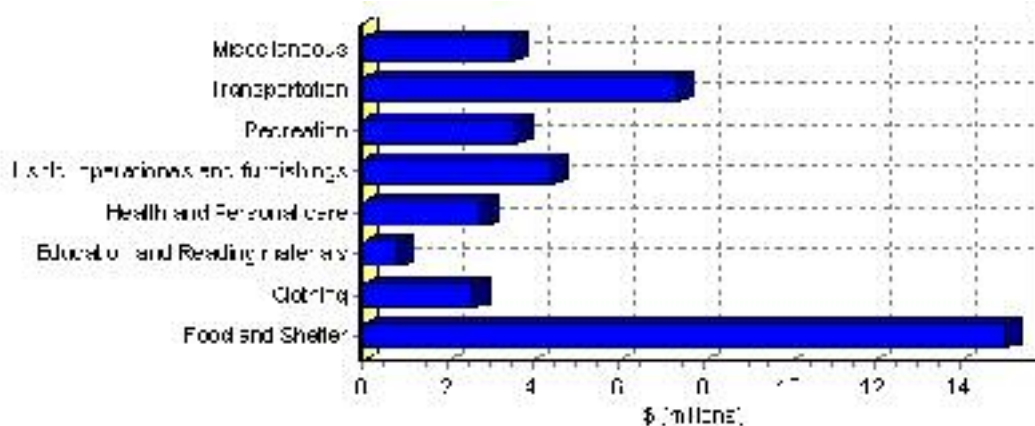
Source: Statistics Canada 1996 & 2001 Census (numbers may not add up due to rounding)

Family Expenditure

Expenditure Category	1992	% of total	1996	% of total
Food and Shelter	\$13,518,610	37.07%	\$15,069,344	37.39%
Clothing	\$2,526,940	6.93%	\$2,629,807	6.53%
Education and Reading materials	\$790,760	2.17%	\$846,995	2.10%
Health and Personal care	\$2,275,270	6.24%	\$2,793,401	6.93%
Hshld. operations and furnishings	\$4,017,600	11.02%	\$4,443,558	11.03%
Recreation	\$3,007,220	8.25%	\$3,608,110	8.95%
Transportation	\$7,460,820	20.46%	\$7,381,079	18.32%
Miscellaneous	\$2,859,020	7.84%	\$3,528,374	8.76%
Total Current Consumption	\$36,467,440	100.00%	\$40,300,668	100.00%
Total # of Households	1,205		1,228	
Average Consumption per Household	\$30,263		\$32,818	

Source: Statistics Canada Family Expenditure Survey 1992 & 1996 (numbers may not add up due to rounding).

Hanna Family Expenditures (1996)

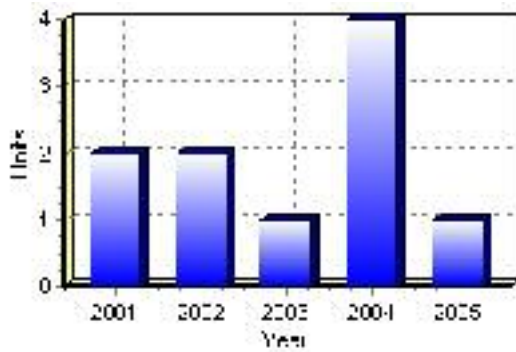


Building Permits

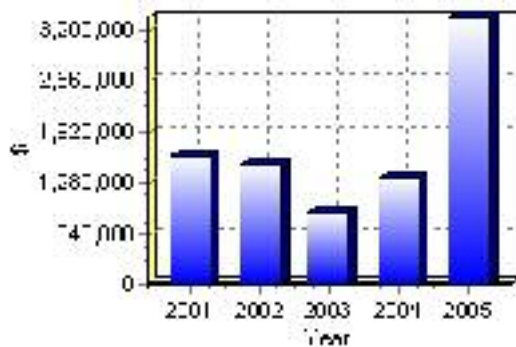
Total Building Permit Values	2001	2002	2003	2004	2005
Building Permits Value, Commercial	\$1,281,000	\$824,000	\$599,000	\$260,000	\$3,026,000
Building Permits Value, Industrial	\$67,000	\$5,000	\$30,000	\$103,000	\$0
Building Permits Value, Institutional	\$0	\$30,000	\$0	\$0	\$0
Building Permits Value, Residential	\$254,000	\$637,000	\$278,000	\$970,000	\$316,000
Building Permits Value, Total	\$1,602,000	\$1,496,000	\$907,000	\$1,333,000	\$3,342,000
Total Housing Starts	2	2	1	4	1

Source: Statistics Canada 2000-2004 Building Permits (numbers may not add up due to rounding)

Total Housing Starts



Value of Building Permits



Dwellings

Occupied Private Dwellings by Type	1996	% of total	2001	% of total
Apartments	90	7.35%	110	8.87%
Detached Duplexes	20	1.63%	10	0.81%
Movable Dwellings	40	3.27%	50	4.03%
Other single attached house	0	0.00%	10	0.81%
Row and semi-detached house	145	11.84%	110	8.87%
Single-detached house	935	76.33%	950	76.61%
Total number of occupied private dwellings	1,225	100.00%	1,240	100.00%
Private dwellings, owned	845	68.98%	860	69.35%
Private Dwellings, rented	380	31.02%	380	30.65%

Source: Statistics Canada 1996 & 2001 Census (numbers may not add up due to rounding)

Private Dwellings by Period of Construction	# of Dwellings	% of total
Period of construction, before 1946	300	24.19%
Period of construction, 1946 - 1960	145	11.69%
Period of construction, 1961 - 1970	205	16.53%
Period of construction, 1971 - 1980	255	20.56%
Period of construction, 1981 - 1990	275	22.18%
Period of construction, 1991 - 2001	60	4.84%
Total number of private dwellings constructed	1,240	100.00%

Source: Statistics Canada 2001 Census (numbers may not add up due to rounding)

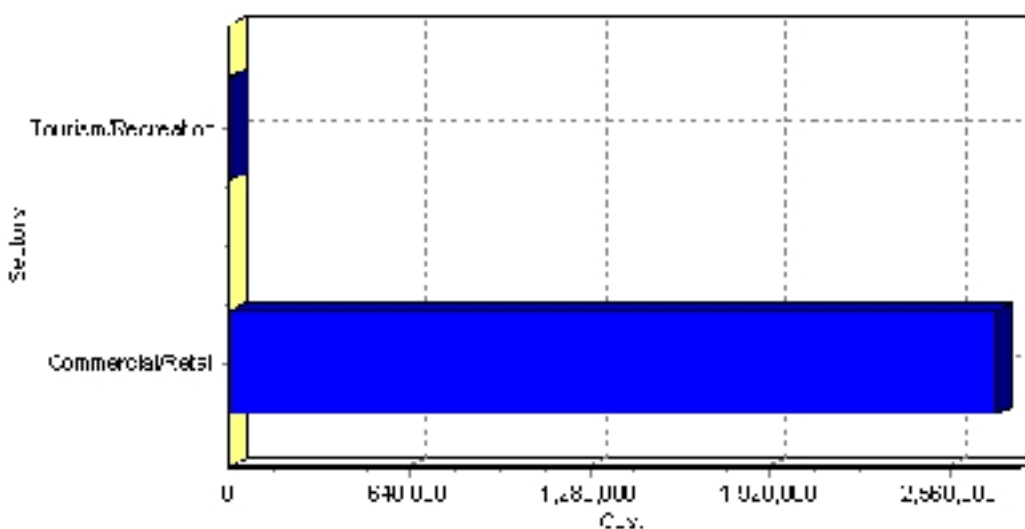
Projects

Summary of Projects in Hanna as of September 2006

Project Sector	Number of Projects	Project Cost
Commercial/Retail	8	\$2,720,000
Tourism/Recreation	1	\$10,000
Total	9	\$2,730,000

This inventory lists projects in Alberta that have recently been completed, are under construction, or are proposed to start construction. Not all projects are listed due to reasons of confidentiality and/or due to information not being available at the time of printing. Project data is obtained from public information sources, where possible, this data has been verified with the project proponent/developer, users of the Inventory may wish to confirm project data with the proponent/developer. The inventory does not breakdown project expenditures by any given year. The cost of a project is the value of expenditures expected over all phases of project construction, which may span over two or more years. Cost of projects listed in the Inventory are estimated values only. Source: Alberta Economic Development, 2004.

Value of Projects by Sector (as of September 2006)



Project Status	Number of Projects	Project Cost
Announced	2	\$370,000
Completed	1	\$10,000
Proposed	1	\$70,000
Under Construction	5	\$2,280,000
Total	9	\$2,730,000

This inventory lists projects in Alberta that have recently been completed, are under construction, or are proposed to start construction. Not all projects are listed due to reasons of confidentiality and/or due to information not being available at the time of printing. Project data is obtained from public information sources, where possible, this data has been verified with the project proponent/developer, users of the Inventory may wish to confirm project data with the proponent/developer. The inventory does not breakdown project expenditures by any given year. The cost of a project is the value of expenditures expected over all phases of project construction, which may span over two or more years. Cost of projects listed in the Inventory are estimated values only. Source: Alberta Economic Development, 2004.

Largest Projects in Hanna as of September 2006

Company Name	Project Description	Project Location	Project Cost	Construction Schedule	Status
Kittler Construction	Commercial Building	Hanna	\$900,000	2006-2006	Under Construction
Ell & Anderson Chartered Accountants	Office Complex	Hanna	\$650,000	2006-2006	Under Construction
Fluid Experts	New Commercial Building	Hanna	\$400,000	2006-2006	Under Construction
Greenslades Disposal	Commercial Addition	Hanna	\$200,000	2006-2006	Announced
Kittler Construction	Accessory Building	Hanna	\$180,000	2006-2006	Under Construction
Ledcor	Accessory Building	Hanna	\$170,000	2006-2006	Announced
Seymour Hotel	Renovations	Hanna	\$150,000	2006-2006	Under Construction
Exlco	Industrial Accessory Building	Hanna	\$70,000	-	Proposed
Town of Hanna	Park - Redevelopment	Hanna	\$10,000	2006-2006	Completed

Disclaimer: Information in this profile has been provided from a variety of external sources. Although every effort has been made to ensure the accuracy, currency and reliability of the content and data, AlbertaFirst.com Ltd. accepts no responsibility in this regard.

© AlbertaFirst.com Ltd., 2006.