

New Sarepta

www.newsarepta.com

Welcome

Welcome to our community. We hope the information contained within this profile is useful. If additional information is required, please contact our representative from the "Key Contacts" section.

Area Overview

Located 30 minutes from Edmonton on Highway 21, the Village of New Sarepta is just moments away from Joseph Lake - Centennial Park and Miquelon Lake Provincial Park. New Sarepta offers a peaceful setting of a park and picnic area.

The Village derived its name from a group of German immigrant settlers from Russia. The railway, built in 1912, provided a nucleus for a town and homesteaders were quick to make the area a farming community.

This thriving Village is striving to become "Cartoon Capital of Canada". Visit its famous Fence of Fame. Many of the walls in the New Sarepta High School are adorned with original cartoon murals created by Yardley Jones.

Community Services

Municipal

Village of New Sarepta
Box 278
New Sarepta, Alberta
T0B 3M0
Tel: 780-941-3929
Fax: 780-941-3890

Public Library

Federal

Canada Post Office

Community Lifestyle

Recreation

Recreation facilities include baseball diamonds, a skating rink, agriplex and parks.

Community Organizations

Community organizations include the Agricultural Society, Figure Skating Club, Golden Pioneers Club, Minor Hockey Association, Gymkhana Club, Mens and Womens' Ball Clubs and Further Education Classes.

Religious Services

- New Sarepta Country Church

- Evangelical Missionary Church

Special Annual Events/Attractions

Every July 1, during New Sarepta's Canada Day Celebrations, cartoonists add their creations to the famous "Fence of Fame". Cartoons are big in New Sarepta! Many of the walls in the New Sarepta Community High School are adorned with original cartoon murals created by Yardley Jones.

On the second weekend in August, New Sarepta holds its Agricultural Fair and Sports Day. Other activities include the Agricultural Barbeque in late August and the Volunteer Fire Department's Demolition Derby in September.

Hospitality

Accommodation

New Sarepta Hotel

Restaurants

Out to Lunch Cafe

Economic Base

New Sarepta's economic base is agriculture.

Economic Facts

Major Businesses Products/Services

L Trempler & Sons Ltd. Farm Implement Dealership

Financial Institutions

Alberta Treasury Branch Agency

Education

New Sarepta is part of the [Black Gold Regional Division #18](#), headquartered in Nisku [Tel: 780-955-6025].

Daycare/Nursery

Day care/nursery services are available in New Sarepta.

Public

Schools in New Sarepta include New Sarepta Elementary School [K-6] and New Sarepta Community High School [7-12].

Emergency Services

Fire Protection

New Sarepta is served by a volunteer fire fighting force [Tel: 780-941-3911].

Police Services

New Sarepta is served by the Leduc detachment of the Royal Canadian Mounted Police [RCMP] [Tel: 780-986-2258].

Ambulance Services

Ambulance service is provided from Leduc [Tel: 780-986-2885].

Health Care

The nearest hospital is Leduc General Hospital [20 miles northwest]. Senior citizen housing is available in New Sarepta.

Key Contacts for Business Development

Municipal

Village of New Sarepta
Box 278
New Sarepta, Alberta
T0B 3M0
Tel: 780-941-3929
Fax: 780-941-3890
sarepta@telusplanet.net

Michael Trempner
Mayor

Dennis Litke
Municipal Manager

Provincial (Updated December 2004)

David Pattison
Director, Edmonton Region
Regional Development Branch
Alberta Economic Development
5th Floor, Commerce Place
10155 - 102 Street
Edmonton, AB T5J 4L6
Tel: 780-427-6648
Fax: 780-422-5804
E-Mail: david.pattison@gov.ab.ca
(updated May 10, 2004)

George Rogers
Member of the Legislative Assembly [MLA]
Leduc-Beaumont-Devon Constituency
637 Legislature Annex
9718 107 Street
Edmonton AB
T5K 1E4
Tel: 780-422-2229
Fax: 780-415-0951

Constituency Office

#54, 5203-50 Street
Leduc AB
T9E 6Z5
Tel: 780-986-4652
Fax: 780-986-5228

Federal (Updated June 2001)

James Rajotte
Member of Parliament [MP]
Edmonton-Leduc Constituency
House of Commons
Ottawa, Ontario
K1A 0A6
Tel: 613-992-3594
Fax: 613-992-3616

Constituency Office:
Suite 204
596 Riverbend Square
Edmonton AB
T6R 2E3
Tel: 780-495-4351
Fax: 780-495-4485

Location

The Village of New Sarepta is located in [Leduc County](#). New Sarepta is 39 km southeast of Edmonton and 45 km northwest of Camrose.

Post Secondary Education

New Sarepta residents have access to Edmonton-based post-secondary institutions such as The University of Alberta, Northern Alberta Institute of Technology [NAIT] and Grant McEwan College, as well as Augustana University in Camrose.

Taxation

	<u>Residential/Farmland</u>	<u>Non-Residential</u>
2005		
Municipal Tax Rate	11.7600	11.7600
Education - Alberta School Foundation Fund Tax Rate	3.7050	6.8320
Allowance for Non-Collection of Requisitioned Taxes	.3090	.3090
Seniors Lodge Accommodation Tax Rate	.0617	.0617

Mill Rates [1994]

Residential - Public 34.647
Residential - Separate N/A
Non-Residential - Public 39.891
Non-Residential - Separate N/A

Transportation

Air Services

The nearest airport, commercial and air freight services are at Edmonton.

Rail Services

New Sarepta is served by a Canadian National Railway secondary main line. Spur trackage is available.

Highways

Connecting highways are Highway 21, leading north to Edmonton and south to Camrose via Highway 26, and Secondary Road 623, leading west to Leduc and Highway 2.

Trucking Firms

- Highway 13 Transport
- McTavish Deliveries

Bus Services

Regularly scheduled inter-community bus service is available.

Couriers and Taxis

Loomis and Purolator Couriers.

Utilities

Electrical Power

TransAlta Utilities Corporation
4316 - 38 St.
Camrose, Alberta
T4V 3P1
Tel: 403-679-1800

Natural Gas

Centra Gas Ltd.
Box 428
Leduc, Alberta
T9E 2Y2
Tel: 403-986-3443

Telephone

Alberta Government Telephones Ltd.
10020 100 St.
Edmonton, Alberta
T5J 0N5
Tel: 403-493-4400

Water Supply

New Sarepta's source of water is from the Hart River/Dugout, 2 wells.

Waste Management

Sewage treatment is by lagoon, 4 short term and 2 long term.

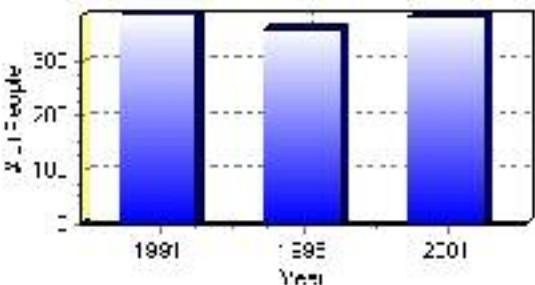
Population

Total Population

Population 2004*	382
Population 2003*	382
Population 2002*	382
Population 2001**	380
Population 2000*	359
Population 1996**	359
Population 1991**	386
Population % change 1991-1996	-7.52%
Population % change 1996-2001	6.02%

* Source: Official Population List, Alberta Municipal Affairs
** Source: Statistics Canada 1991, 1996, & 2001 Census

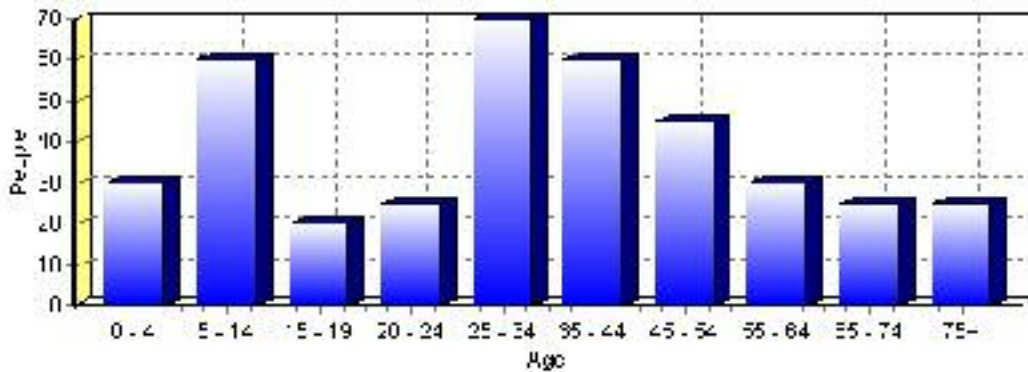
Total Population 1991-2001



Population by Age and Gender	1996 Male	1996 Female	1996 Total	2001 Male	2001 Female	2001 Total
Age 0 - 4	15	10	25	15	15	30
Age 5 - 14	40	30	70	30	30	60
Age 15 - 19	15	15	30	15	5	20
Age 20 - 24	10	10	20	15	10	25
Age 25 - 34	20	20	40	35	35	70
Age 35 - 44	35	30	65	35	25	60
Age 45 - 54	10	15	25	20	25	45
Age 55 - 64	15	10	25	20	10	30
Age 65 - 74	15	15	30	10	15	25
Age 75 and older	5	5	10	15	10	25
Total All Persons	200	165	365	200	185	385

Source: Statistics Canada 1996 & 2001 Census (numbers may not add up due to rounding)

New Sarepta Population by Age Group (2001)

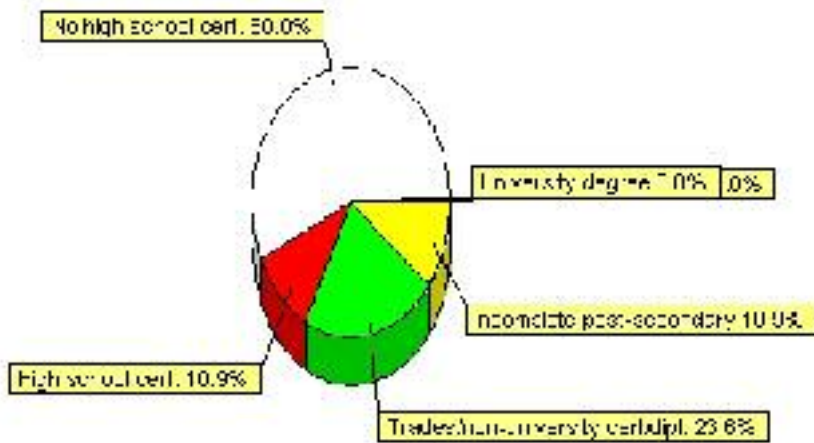


Education Statistics

Highest level of schooling for Population 20yrs and older	2001	%
People without high school certificates	165	60.00%
People with high school certificates	30	10.91%
People with trades or non-university certificate or diploma	65	23.64%
People with post-secondary education (not completed)	30	10.91%
People with university diploma/certificate	0	0.00%
People with university degree	0	0.00%
Total Population 20 years and older	275	100.00%

Source: Statistics Canada 2001 Census (numbers may not add up due to rounding)

New Sarepta Highest Level of Schooling 2001



Population with Post Secondary Qualifications	1996	%	2001	%
Agriculture and biological sciences	0	0.00%	10	13.33%
Commerce, management and business administration	0	0.00%	20	26.67%
Educational, recreational and counseling services	0	0.00%	0	0.00%
Engineering and applied science tech. and trades	15	27.27%	40	53.33%
Engineering and applied sciences	10	18.18%	0	0.00%
Fine and applied arts	0	0.00%	0	0.00%
Health professionals, science and technologies	10	18.18%	10	13.33%
Humanities and related fields	0	0.00%	0	0.00%
Mathematics and physical sciences	0	0.00%	0	0.00%
Social sciences and related fields	0	0.00%	0	0.00%
Other and/or no specialization	0	0.00%	0	0.00%
Total people with post secondary qualifications	55	100.00%	75	100.00%
Females with post-secondary qualifications	30	54.55%	30	40.00%
Males with post-secondary qualifications	25	45.45%	45	60.00%

Source: Statistics Canada 1996 & 2001 Census (numbers may not add up due to rounding)

Labour Force

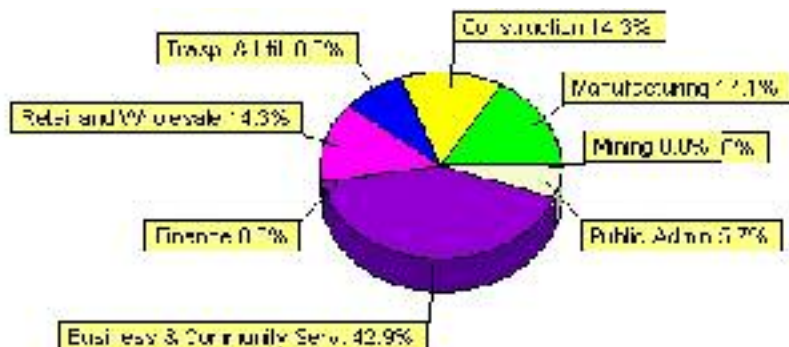
Labour force by activity	1996	2001
In the labour force, both sexes	125	180
Not in the labour force, both sexes	105	120
Total population 15 and over	230	295
Employed, both sexes	110	155
Unemployed, both sexes	15	30
Participation rate, both sexes	54.00%	61.00%
Unemployment rate, both sexes	12.00%	17.00%

Source: Statistics Canada 1996 & 2001 Census (numbers may not add up due to rounding)

Labour Force by Industry Division	1996	% of total	2001	% of total
Agriculture	10	8.00%	0	0.00%
Mining	0	0.00%	0	0.00%
Manufacturing	10	8.00%	30	17.14%
Construction	15	12.00%	25	14.29%
Transportation. & Utilities	10	8.00%	15	8.57%
Retail and Wholesale	10	8.00%	25	14.29%
Finance	0	0.00%	0	0.00%
Business & Community Services	30	24.00%	75	42.86%
Public Administration	10	8.00%	10	5.71%
Total All Industries	125	100.00%	175	100.00%

Source: Statistics Canada 1996 & 2001 Census (numbers may not add up due to rounding)

New Sarepta Labour Force By Industry - 2001



Labour Force by Major Occupational Groups	1996	%	2001	%
Management occupations	10	7.69%	30	17.14%
Business, Finances and administrative occupations	35	26.92%	40	22.86%
Natural and applied sciences and related occupations	10	7.69%	10	5.71%
Health occupations	0	0.00%	0	0.00%
Occupations in social science; education; government and religion	0	0.00%	0	0.00%
Occupations in art; culture; recreation and sport	0	0.00%	0	0.00%

Sales and service occupations	20	15.38%	20	11.43%
Trades; transport; equipment operators and related occupations	25	19.23%	60	34.29%
Occupations unique to primary industry	15	11.54%	15	8.57%
Occupations unique to processing; manufacturing and utilities	20	15.38%	0	0.00%
Occupations not elsewhere classified	0	0.00%	10	5.71%
Total - All Occupations (major groups)	130	100.00%	175	100.00%
Females - All Occupations	55	42.31%	85	48.57%
Males - All Occupations	75	57.69%	85	48.57%

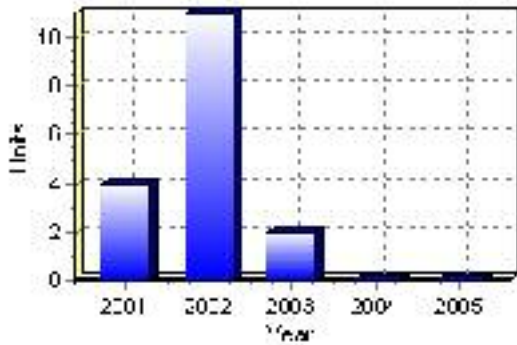
Source: Statistics Canada 1996 & 2001 Census (numbers may not add up due to rounding)

Building Permits

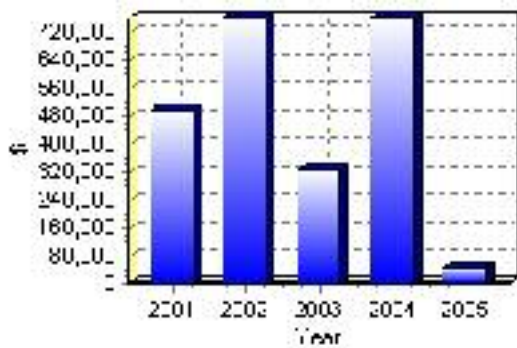
Total Building Permit Values	2001	2002	2003	2004	2005
Building Permits Value, Commercial	\$0	\$1,000	\$30,000	\$0	\$0
Building Permits Value, Industrial	\$156,000	\$0	\$0	\$0	\$0
Building Permits Value, Institutional	\$0	\$0	\$0	\$725,000	\$0
Building Permits Value, Residential	\$340,000	\$756,000	\$295,000	\$30,000	\$45,000
Building Permits Value, Total	\$496,000	\$757,000	\$325,000	\$755,000	\$45,000
Total Housing Starts	4	11	2	0	0

Source: Statistics Canada 2000-2004 Building Permits (numbers may not add up due to rounding)

Total Housing Starts



Value of Building Permits



Dwellings

Occupied Private Dwellings by Type	1996	% of total	2001	% of total
Apartments	0	0.00%	0	0.00%
Detached Duplexes	0	0.00%	0	0.00%
Movable Dwellings	0	0.00%	45	32.14%
Other single attached house	0	0.00%	0	0.00%
Row and semi-detached house	0	0.00%	5	3.57%
Single-detached house	100	95.24%	90	64.29%
Total number of occupied private dwellings	105	100.00%	140	100.00%
Private dwellings, owned	95	90.48%	105	75.00%
Private Dwellings, rented	0	0.00%	35	25.00%

Source: Statistics Canada 1996 & 2001 Census (numbers may not add up due to rounding)

Private Dwellings by Period of Construction	# of Dwellings	% of total
Period of construction, before 1946	45	33.33%
Period of construction, 1946 - 1960	0	0.00%
Period of construction, 1961 - 1970	15	11.11%
Period of construction, 1971 - 1980	55	40.74%
Period of construction, 1981 - 1990	10	7.41%
Period of construction, 1991 - 2001	10	7.41%
Total number of private dwellings constructed	135	100.00%

Source: Statistics Canada 2001 Census (numbers may not add up due to rounding)

Disclaimer: Information in this profile has been provided from a variety of external sources. Although every effort has been made to ensure the accuracy, currency and reliability of the content and data, AlbertaFirst.com Ltd. accepts no responsibility in this regard.

© AlbertaFirst.com Ltd., 2006.