

Smoky Lake County

www.smokylakecounty.ab.ca

Welcome

Welcome to our community. We hope the information contained within this profile is useful. If additional information is required, please contact our representative from the "Key Contacts" section.

Area Overview

The County of Smoky Lake is located in northeast Alberta, approximately 120 km from Edmonton. It encompasses the Town of Smoky Lake, and the Villages of Waskatenau and Vilna.

The regional economy is based on agriculture and forestry. In addition, the County is home to some of the most impressive natural areas in the province. As such, the tourism industry, particularly eco-tourism, is seen as having significant potential in the area.

The County of Smoky Lake offers a wide variety of recreational opportunities, from camping and fishing to hiking in the many natural areas in the County. Also, the County has a rich history back to the early 1900's and, as a result, there are many historical sites and points of interest throughout the County. Finally, each of the communities have many activities and events for residents and visitors alike, which attests to the strong community spirit of the County of Smoky Lake.

Community Services

Municipal

County of Smoky Lake No. 13
Box 310
Smoky Lake, Alberta
T0A 3C0
Tel: 403-656-3730
Fax: 403-656-3768

Provincial

Several provincial departments have offices in the County, including Alberta Agriculture, Alberta Financial Services Corporation, Fish & Wildlife, and the Pine Ridge Forest Nursery.

Federal

- Canada Post
- Royal Canadian Mounted Police
- Farm Credit Corporation

Community Lifestyle

Recreation

The Town of Smoky Lake and the communities have a wide range of recreational facilities including curling rinks, ice arenas, dance

halls, gymnasiums, ball diamonds, campgrounds, kid's playgrounds and senior citizens drop-in centres.

Nearby resort areas include the Smoky Lake Campground, Victoria Picnic Grounds, Hanmore Lake Campground [west][east], Warspite Picnic Grounds, Island Lake Campground, Mons Lake Campground, Bellis Lake Campground, Garner Lake Provincial Park, Bonnie Lake Campground, Vilna Lions Club Rest Area, and the Village Park [day use].

Other points of interest include the Bellis Natural Area, Smoky Lake Golf Course, Holgerson Dairies, Kalyna Country Ecomuseum, Waskatenau Trestle, Victoria Trail, Pine Creek Post Office and General Store, Fort Victoria, Pine Ridge Forest Nursery, World's Largest Mushroom, Vilna Pool Hall, Vilna Golf Course and the Kubasa Canyon.

Community Organizations

There are a wide range of community organizations, sports clubs and service groups that are active throughout the County.

Religious Services

Most religious denominations are represented in the County.

Special Annual Events/Attractions

Local cultural facilities include the Smoky Lake Museum, Smoky Lake. Also the Historic CNR Station is a museum that also houses the Tourist Information Booth and the White Earth Art Gallery.

A wide range of annual events take place throughout the County, including:

- Smoky Lake Stampede and Heritage Days [Smoky Lake, long weekend in August]
- Great White North Pumpkin Fair and Weigh-off [Smoky Lake, October]
- Victoria Trail Agricultural Society Annual Fair [Waskatenau, August]
- Vilna Fair Days [Vilna, 3rd weekend in August]
- Warspite Farmers Day Weekend Celebration [Warspite, second weekend in June]
- Bellis 9th Annual Slow Pitch Tournament [Bellis, May long weekend]
- 11th Annual Fort Victoria Days [Fort Victoria, August]

Hospitality

Accommodation

Overnight accommodation is available in the Town of Smoky Lake, Vilna, Waskatenau, Warspite and Spedden. There are also two bed & breakfast establishments in the Smoky Lake area.

Restaurants

Dining establishments are available in Smoky Lake, Vilna, Waskatenau and Spedden.

Economic Base

Primary natural resources in the area include large deposits of natural gas, extensive areas of peat, some forested areas suitable for logging; a large number of lakes and natural areas attractive to vacationers and wildlife enthusiasts, and a 50 mile stretch of the north shore of the North Saskatchewan River, virtually undeveloped.

The major economic base of the County is agriculture. The area has grazing lands to the north, good quality flat crop lands to the west, a climate suitable for most crops, ready access to processing facilities, and a large domestic market in Edmonton.

Tourism is a significant growth industry for the County, with numerous small business enterprises starting to evolve as the large Edmonton market looks closer to home for vacation and recreation opportunities. The area is viewed as having significant potential

for eco-tourism ventures.

The forest industry has a significant impact on the County as a result of the Alberta Government's Pine Ridge Forest Nursery, a world-scale facility providing tree seedlings for reforestation projects throughout the province. The location of this facility has encouraged development in a nearby rural location of a privately operated greenhouse producing nursery stock for reforestation purposes.

Economic Facts

The major industrial facility in the County is Holgerson Dairies Inc., a dairy processing plant which employs approximately 50 people and ships fluid milk and manufactured milk products throughout the north and north-central Alberta. The Town of Smoky Lake serves as a service centre for a large area in all directions.

A major industry in the rural area is a peat processing plant which harvests, dries and ships peat to Edmonton for containerization and distribution. Large areas of undeveloped peat lands are located in the regions to the north and east of the County.

Major Businesses Products/Services

- Holgerson Dairies Inc. Dairy Processing

Financial Institutions

Financial institutions that serve the area include the Toronto Dominion Bank [Smoky Lake, Vilna], Canadian Imperial Bank of Commerce [Smoky Lake, Waskatenau], and Alberta Treasury Branch [Smoky Lake, Vilna, Waskatenau]. An office of the Agriculture Financial Services Corporation and Farm Credit Corporation are also located in the County.

Education

The County is part of the Aspen View Regional Division, headquartered in the Town of Athabasca [Tel: 403-675-2273].

Daycare/Nursery

Day cares and nurseries are located throughout the County.

Public

Public schooling is available in Smoky Lake [K-12], Vilna [K-12], Waskatenau [K-8], and Bellis [K-6].

Separate

N/A

Private

N/A

Emergency Services

Fire Protection

The County is served by a 15-member volunteer fire department based in Smoky Lake. It serves the area from Warspite to the River, east to Bellis and north past Hanmore Lake. There are also fire departments that serve the Town of Smoky Lake, Vilna and Waskatenau. The volunteer fire departments in Vilna and Waskatenau serve the residents in the eastern and western regions of the County.

Police Services

The County is served by the Royal Canadian Mounted Police, based in Smoky Lake.

Ambulance Services

Paramedic and ambulance services are provided by Mystique Ambulance. An Advanced Life Support [ALS] level of service is available.

Health Care

Hospital care is available at the George McDougall Memorial and Auxiliary Hospital in Smoky Lake [10 acute care beds, laboratory and diagnostic imaging, community-based services, respite and palliative programs], and Our Lady's Hospital in Vilna [continuing care beds, community-based services, laboratory and diagnostic imaging, respite and palliative programs]. Medical clinics and nursing homes are available in Smoky Lake and Vilna, while senior citizens homes are available in Smoky Lake, Waskatenau and Vilna.

The County is also served by the North Eastern Alberta Health Unit, which provides programs in home care, speech-language pathology, community health nursing, hereditary diseases, environmental health, nutrition, dental, Alberta Aids to Daily Living, family life and health promotion.

Key Contacts for Business Development

Municipal

County of Smoky Lake No. 13

Box 310

Smoky Lake, Alberta

T0A 3C0

Tel: 780-656-3730

Fax: 780-656-3768

countysl@telusplanet.net

Peter Apedaile

Reeve

Mr. Cary Smigerowsky

Chief Administrative Officer

county@smokylakecounty.ab.ca

Mr. Paul Pelletier

General Manager

The REACH Corporation (A Community Futures Corporation)

Box 310

Smoky Lake, Alberta

T0A 3C0

Tel: 780-656-2110

E-Mail: slbcdd@mcsnet.ab.ca.

Provincial (Updated December 2004)

[Alberta Economic Development](#)

Box 412

Room 308, Provincial Building

5025 - 49 Avenue
St. Paul, Alberta
T0A 3A4
Tel: 780-645-6358
Fax: 780-645-6241
Garry Krause, Regional Manager
Maryann Robinson, Client Service Representative

Hon. Mike Cardinal
Member of the Legislative Assembly (MLA)
Redwater Constituency Constituency Office
Box 408,
4908 - 50 Avenue
Redwater, AB
T0A 2W0
Phone: (780) 942-3505
Fax: (780) 942-3506
Toll Free Number: 1-800-387-6548
Redwater@assembly.ab.ca

Legislature Office
721 Legislative Annex
9718 - 107 Street
Edmonton, AB
T5K 1E4
Phone: (780) 415-0955
Fax: (780) 422-1671

Federal (Updated June 2004)

Dave Chatters
Member of Parliament [MP]
Westlock-St. Paul Constituency
House of Commons
Ottawa, Ontario
K1A 0A6

Constituency Office: To be established soon.

In the meantime, call 1-800-667-8450.

Location

The County of Smoky Lake is located approximately 120 km northeast of Edmonton. It is approximately a one hour drive to Edmonton's city limits to the southwest; the Town of Vegreville to the south; the Town of St. Paul to the east and the Town of Lac La Biche to the northeast.

Post Secondary Education

Post-secondary institutions in Edmonton such as The University of Alberta, Grant MacEwan College and the Northern Alberta Institute of Technology [NAIT], are approximately 1 hour's drive from the County of Smoky Lake.

Taxation

| | <u>Residential/Farmland</u> | <u>Non-Residential</u> |
|---|-----------------------------|------------------------|
| 2004 | | |
| Municipal Tax Rate | 7.5100 | 14.2600 |
| Education - Alberta School Foundation Fund Tax Rate | 4.7340 | 7.5150 |
| Seniors Lodge Accommodation Tax Rate | .5950 | .5950 |

Mill Rates [1995]

Residential - Public 26.036

Residential - Separate N/A

Non-Residential - Public 24.188

Non-Residential - Separate N/A

The pipeline mill rate is 26.118.

Transportation

Air Services

A grass air strip is located immediately to the east of the Town of Smoky Lake, which is maintained for casual summer use. National and international air service is available at Edmonton Industrial and Edmonton International Airports.

Rail Services

A major branch line of the CNR passes through the communities within the County, connecting Edmonton with Cold Lake and the military air base.

Highways

The County of Smoky Lake is located about an hour's distance from Edmonton, immediately beside Highway 28, the main highway connecting Edmonton with the Lakeland Tourism Region and the Cold Lake military air base.

Secondary Highway 855 provides access southward via Highways 45 and 16 to the Yellowhead Route to the more eastern provinces and to the south and east sectors of the province. A network of highways connects through to Lethbridge and Medicine Hat and the U.S. border bypassing the major population centres of Edmonton and Calgary.

Highway 36, about 25 minutes east of the Town of Smoky Lake, provides direct paved access to Lac La Biche and to Fort McMurray and the Athabasca Tar Sands developments.

Highways 855, 45, 15 and 21 provide paved access to the Edmonton International Airport, avoiding the congestion of Edmonton city traffic.

A network of primary and secondary highways serve the County region, providing access to the western regions of the province and Peace River Country, without the need of dealing with restrictions of traffic in a large population centre.

Trucking Firms

Several trucking firms serve the County, providing general and specialized transportation services, including livestock hauling.

Bus Services

Greyhound Bus Lines operates a twice daily passenger and courier service within the County and Cold Lake, and between the County and Edmonton. In addition, Carson Tours operates a luxury bus charter service from the area.

Couriers and Taxis

National and international couriers such as Loomis and Purolator supply daily service to the County. In addition, Greyhound Courier Express offers twice daily courier service, and Canada Post offers daily courier service.

Utilities

Electrical Power

Alberta Power Ltd.
Box 400, #15 White Earth Street
Smoky Lake, Alberta
T0A 3C0
Tel: 403-656-3770

Natural Gas

County of Smoky Lake Natural Gas System
Box 310
Smoky Lake, Alberta
T0A 3C0
Tel: 403-656-3037 [emergencies only]

Telephone

A.G.T. Limited
Residential [Tel: 403-310-2255]
Business [Tel: 403-310-3100]

Water Supply

The Town of Smoky Lake and the Villages of Warspite, Vilna and Waskatenau administer their own water supply. The Hamlet of Spedden is supplied with a central "truck fill" facility with metred well water. All other residents are responsible for their own water service.

Waste Management

The Town of Smoky Lake, the Villages of Waskatenau, Warspite and Vilna, and the Hamlet of Bellis have community sewage treatment facilities [lagoons]. Sewage treatment in other areas is completed privately.

Weekly garbage collection is available in the Town of Smoky Lake and the Villages of Waskatenau, Warspite and Vilna. Garbage in other areas is privately hauled to landfill sites near Smoky Lake, Vilna, Spedden, Bellis and Waskatenau.

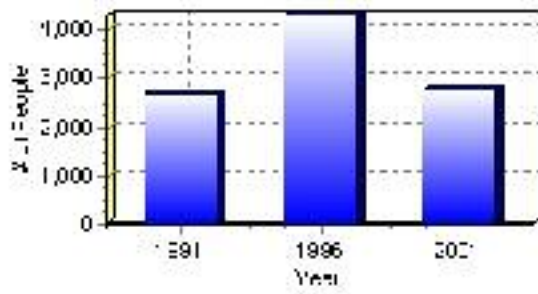
Population

Total Population

| | |
|-------------------------------|---------|
| Population 2004* | 2,773 |
| Population 2003* | 2,773 |
| Population 2002* | 2,773 |
| Population 2001** | 4,415 |
| Population 2000* | 2,857 |
| Population 1996** | 4,302 |
| Population 1991** | 2,689 |
| Population % change 1991-1996 | 37.49% |
| Population % change 1996-2001 | -55.14% |

* Source: Official Population List, Alberta Municipal Affairs
** Source: Statistics Canada 1991, 1996, & 2001 Census

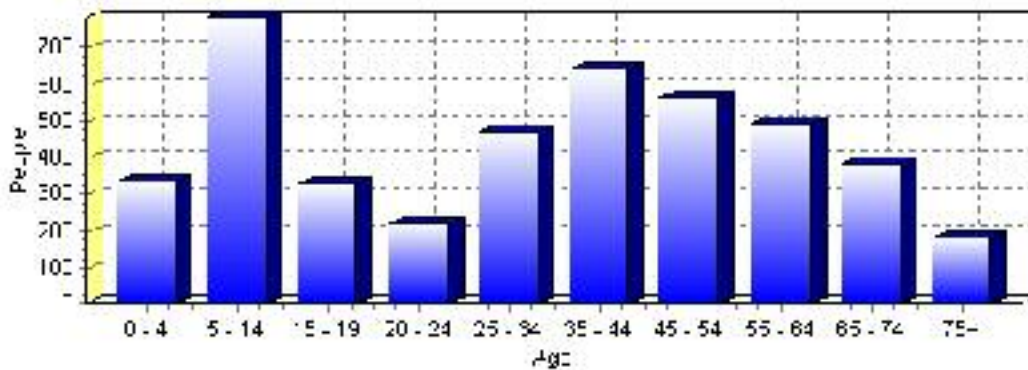
Total Population 1991-2001



| Population by Age and Gender | 1996 Male | 1996 Female | 1996 Total | 2001 Male | 2001 Female | 2001 Total |
|------------------------------|-----------|-------------|------------|-----------|-------------|------------|
| Age 0 - 4 | 180 | 170 | 350 | 165 | 170 | 335 |
| Age 5 - 14 | 405 | 380 | 785 | 395 | 390 | 785 |
| Age 15 - 19 | 175 | 145 | 320 | 185 | 145 | 330 |
| Age 20 - 24 | 120 | 105 | 225 | 120 | 100 | 220 |
| Age 25 - 34 | 275 | 285 | 560 | 220 | 250 | 470 |
| Age 35 - 44 | 315 | 260 | 575 | 345 | 300 | 645 |
| Age 45 - 54 | 225 | 260 | 485 | 290 | 275 | 565 |
| Age 55 - 64 | 265 | 250 | 515 | 260 | 235 | 495 |
| Age 65 - 74 | 195 | 140 | 335 | 215 | 170 | 385 |
| Age 75 and older | 95 | 50 | 145 | 105 | 75 | 180 |
| Total All Persons | 2,255 | 2,050 | 4,305 | 2,305 | 2,110 | 4,415 |

Source: Statistics Canada 1996 & 2001 Census (numbers may not add up due to rounding)

Smoky Lake County Population by Age Group (2001)

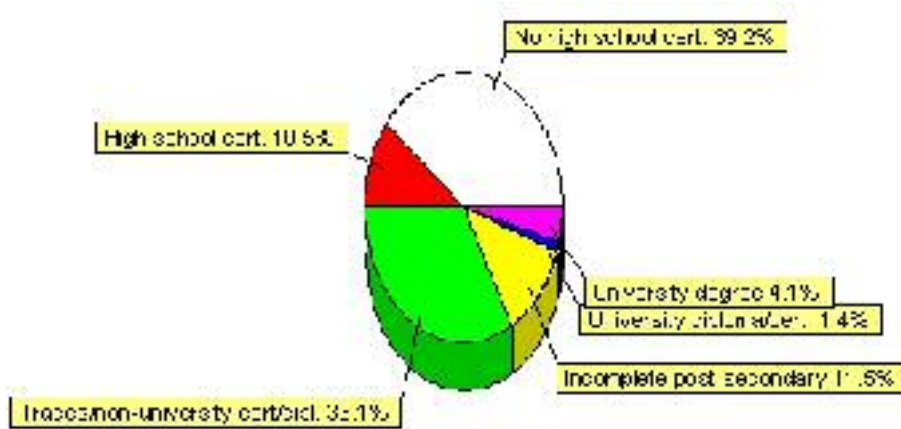


Education Statistics

| Highest level of schooling for Population 20yrs and older | 2001 | % |
|---|-------|---------|
| People without high school certificates | 1,160 | 39.19% |
| People with high school certificates | 310 | 10.47% |
| People with trades or non-university certificate or diploma | 980 | 33.11% |
| People with post-secondary education (not completed) | 340 | 11.49% |
| People with university diploma/certificate | 40 | 1.35% |
| People with university degree | 120 | 4.05% |
| Total Population 20 years and older | 2,960 | 100.00% |

Source: Statistics Canada 2001 Census (numbers may not add up due to rounding)

Smoky Lake County Highest Level of Schooling 2001



| Population with Post Secondary Qualifications | 1996 | % | 2001 | % |
|---|------|---------|-------|---------|
| Agriculture and biological sciences | 90 | 10.29% | 100 | 8.62% |
| Commerce, management and business administration | 150 | 17.14% | 200 | 17.24% |
| Educational, recreational and counseling services | 95 | 10.86% | 120 | 10.34% |
| Engineering and applied science tech. and trades | 345 | 39.43% | 360 | 31.03% |
| Engineering and applied sciences | 10 | 1.14% | 10 | 0.86% |
| Fine and applied arts | 30 | 3.43% | 45 | 3.88% |
| Health professionals, science and technologies | 100 | 11.43% | 200 | 17.24% |
| Humanities and related fields | 25 | 2.86% | 15 | 1.29% |
| Mathematics and physical sciences | 0 | 0.00% | 0 | 0.00% |
| Social sciences and related fields | 25 | 2.86% | 105 | 9.05% |
| Other and/or no specialization | 0 | 0.00% | 0 | 0.00% |
| Total people with post secondary qualifications | 875 | 100.00% | 1,160 | 100.00% |
| Females with post-secondary qualifications | 375 | 42.86% | 590 | 50.86% |
| Males with post-secondary qualifications | 500 | 57.14% | 570 | 49.14% |

Source: Statistics Canada 1996 & 2001 Census (numbers may not add up due to rounding)

Labour Force

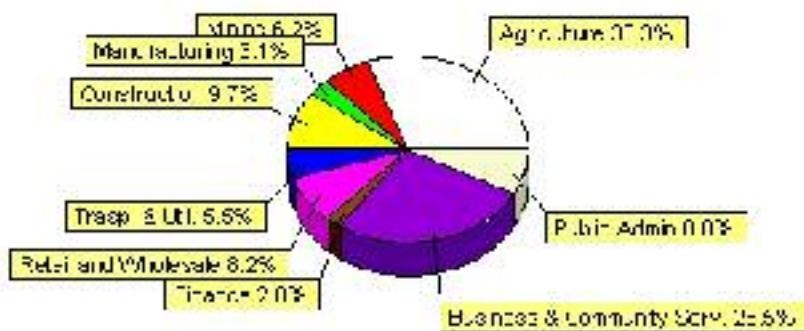
| Labour force by activity | 1996 | 2001 |
|-------------------------------------|--------|--------|
| In the labour force, both sexes | 2,255 | 2,300 |
| Not in the labour force, both sexes | 915 | 980 |
| Total population 15 and over | 3,170 | 3,275 |
| Employed, both sexes | 1,965 | 2,075 |
| Unemployed, both sexes | 290 | 215 |
| Participation rate, both sexes | 71.00% | 70.00% |
| Unemployment rate, both sexes | 12.00% | 9.00% |

Source: Statistics Canada 1996 & 2001 Census (numbers may not add up due to rounding)

| Labour Force by Industry Division | 1996 | % of total | 2001 | % of total |
|-----------------------------------|-------|------------|-------|------------|
| Agriculture | 755 | 34.47% | 685 | 30.31% |
| Mining | 95 | 4.34% | 140 | 6.19% |
| Manufacturing | 105 | 4.79% | 70 | 3.10% |
| Construction | 190 | 8.68% | 220 | 9.73% |
| Transportation. & Utilities | 140 | 6.39% | 125 | 5.53% |
| Retail and Wholesale | 190 | 8.68% | 185 | 8.19% |
| Finance | 10 | 0.46% | 45 | 1.99% |
| Business & Community Services | 625 | 28.54% | 600 | 26.55% |
| Public Administration | 265 | 12.10% | 180 | 7.96% |
| Total All Industries | 2,190 | 100.00% | 2,260 | 100.00% |

Source: Statistics Canada 1996 & 2001 Census (numbers may not add up due to rounding)

Smoky Lake County Labour Force By Industry - 2001



| Labour Force by Major Occupational Groups | 1996 | % | 2001 | % |
|---|------|-------|------|-------|
| Management occupations | 60 | 2.74% | 185 | 8.17% |
| Business, Finances and administrative occupations | 180 | 8.22% | 160 | 7.06% |
| Natural and applied sciences and related occupations | 65 | 2.97% | 40 | 1.77% |
| Health occupations | 65 | 2.97% | 80 | 3.53% |
| Occupations in social science; education; government and religion | 55 | 2.51% | 125 | 5.52% |
| Occupations in art; culture; recreation and sport | 20 | 0.91% | 35 | 1.55% |

| | | | | |
|--|-------|---------|-------|---------|
| Sales and service occupations | 345 | 15.75% | 375 | 16.56% |
| Trades; transport; equipment operators and related occupations | 520 | 23.74% | 440 | 19.43% |
| Occupations unique to primary industry | 795 | 36.30% | 760 | 33.55% |
| Occupations unique to processing; manufacturing and utilities | 85 | 3.88% | 65 | 2.87% |
| Occupations not elsewhere classified | 75 | 3.42% | 35 | 1.55% |
| Total - All Occupations (major groups) | 2,190 | 100.00% | 2,265 | 100.00% |
| Females - All Occupations | 945 | 43.15% | 960 | 42.38% |
| Males - All Occupations | 1,245 | 56.85% | 1,300 | 57.40% |

Source: Statistics Canada 1996 & 2001 Census (numbers may not add up due to rounding)

Income

| Family Income (Number of Families) | 1996 | % | 2001 | % |
|---|-------------|----------|-------------|----------|
| less than \$19,999 | 270 | 25.71% | 220 | 19.82% |
| \$20,000 - \$39,999 | 385 | 36.67% | 475 | 42.79% |
| \$40,000 - \$59,999 | 200 | 19.05% | 285 | 25.68% |
| \$60,000 and over | 195 | 18.57% | 185 | 16.67% |
| Total number of families | 1,050 | 100.00% | 1,165 | 104.95% |
| Average family income | \$37,833 | | \$45,021 | |
| Median family income | \$28,620 | | \$36,873 | |

Source: Statistics Canada 1996 & 2001 Census (numbers may not add up due to rounding)

| Household Income (Number of Households) | 1996 | % | 2001 | % |
|--|-------------|----------|-------------|----------|
| less than \$19,999 | 200 | 14.23% | 315 | 21.43% |
| \$20,000 - \$39,999 | 490 | 34.88% | 530 | 36.05% |
| \$40,000 - \$59,999 | 220 | 15.66% | 310 | 21.09% |
| \$60,000 and over | 50 | 3.56% | 310 | 21.09% |
| Total number of households | 1,405 | 100.00% | 1,470 | 100.00% |
| Average household income | \$34,388 | | \$44,995 | |
| Median household income | \$27,173 | | \$36,028 | |

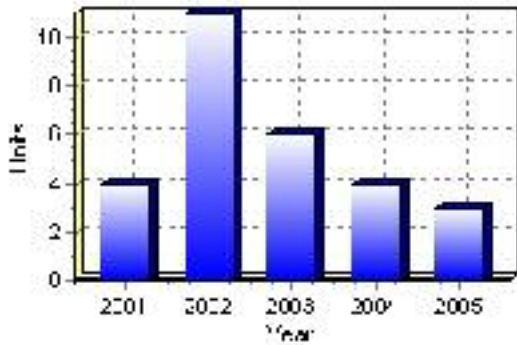
Source: Statistics Canada 1996 & 2001 Census (numbers may not add up due to rounding)

Building Permits

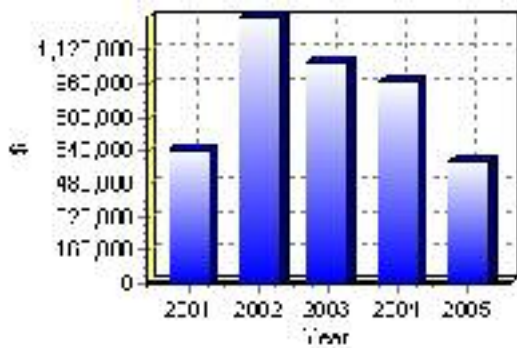
| Total Building Permit Values | 2001 | 2002 | 2003 | 2004 | 2005 |
|---------------------------------------|-----------|-------------|-------------|-----------|-----------|
| Building Permits Value, Commercial | \$120,000 | \$0 | \$175,000 | \$15,000 | \$0 |
| Building Permits Value, Industrial | \$0 | \$100,000 | \$0 | \$0 | \$0 |
| Building Permits Value, Institutional | \$0 | \$0 | \$20,000 | \$400,000 | \$0 |
| Building Permits Value, Residential | \$519,000 | \$1,177,000 | \$866,000 | \$555,000 | \$589,000 |
| Building Permits Value, Total | \$639,000 | \$1,277,000 | \$1,061,000 | \$970,000 | \$589,000 |
| Total Housing Starts | 4 | 11 | 6 | 4 | 3 |

Source: Statistics Canada 2000-2004 Building Permits (numbers may not add up due to rounding)

Total Housing Starts



Value of Building Permits



Dwellings

| Occupied Private Dwellings by Type | 1996 | % of total | 2001 | % of total |
|--|-------------|-------------------|-------------|-------------------|
| Apartments | 0 | 0.00% | 0 | 0.00% |
| Detached Duplexes | 0 | 0.00% | 0 | 0.00% |
| Movable Dwellings | 110 | 7.80% | 65 | 4.42% |
| Other single attached house | 0 | 0.00% | 5 | 0.34% |
| Row and semi-detached house | 0 | 0.00% | 0 | 0.00% |
| Single-detached house | 1,295 | 91.84% | 1,395 | 94.90% |
| Total number of occupied private dwellings | 1,410 | 100.00% | 1,470 | 100.00% |
| Private dwellings, owned | 1,295 | 91.84% | 1,335 | 90.82% |
| Private Dwellings, rented | 110 | 7.80% | 130 | 8.84% |

Source: Statistics Canada 1996 & 2001 Census (numbers may not add up due to rounding)

| Private Dwellings by Period of Construction | # of Dwellings | % of total |
|--|-----------------------|-------------------|
| Period of construction, before 1946 | 165 | 11.22% |
| Period of construction, 1946 - 1960 | 210 | 14.29% |
| Period of construction, 1961 - 1970 | 115 | 7.82% |
| Period of construction, 1971 - 1980 | 240 | 16.33% |
| Period of construction, 1981 - 1990 | 340 | 23.13% |
| Period of construction, 1991 - 2001 | 400 | 27.21% |
| Total number of private dwellings constructed | 1,470 | 100.00% |

Source: Statistics Canada 2001 Census (numbers may not add up due to rounding)

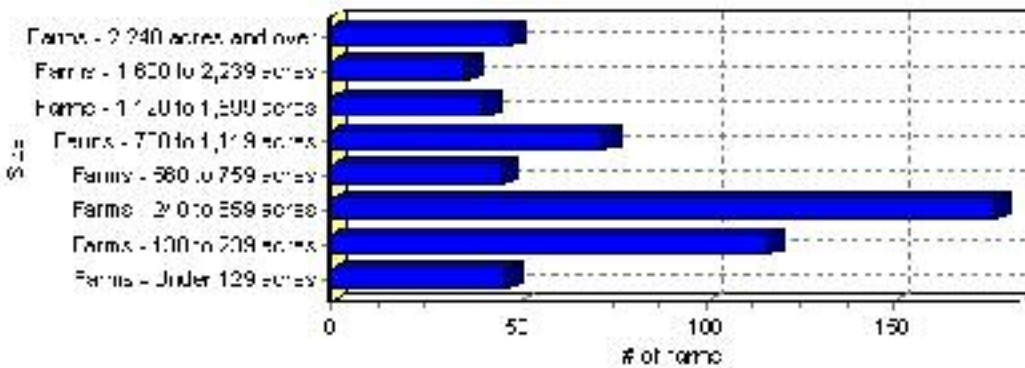
Farming

Smoky Lake County Total Farm Area : 585 acres

| Farms by Total Farm Area (2001) | # of Farms | % of total |
|---------------------------------|------------|------------|
| Farms - Under 129 acres | 47 | 8.03% |
| Farms - 130 to 239 acres | 117 | 20.00% |
| Farms - 240 to 559 acres | 177 | 30.26% |
| Farms - 560 to 759 acres | 46 | 7.86% |
| Farms - 760 to 1,119 acres | 73 | 12.48% |
| Farms - 1,120 to 1,599 acres | 41 | 7.01% |
| Farms - 1,600 to 2,239 acres | 36 | 6.15% |
| Farms - 2,240 acres and over | 48 | 8.21% |
| Total number of farms reporting | 585 | 100.00% |

Source: Statistics Canada 2001 Census of Agriculture(numbers may not add up due to rounding)

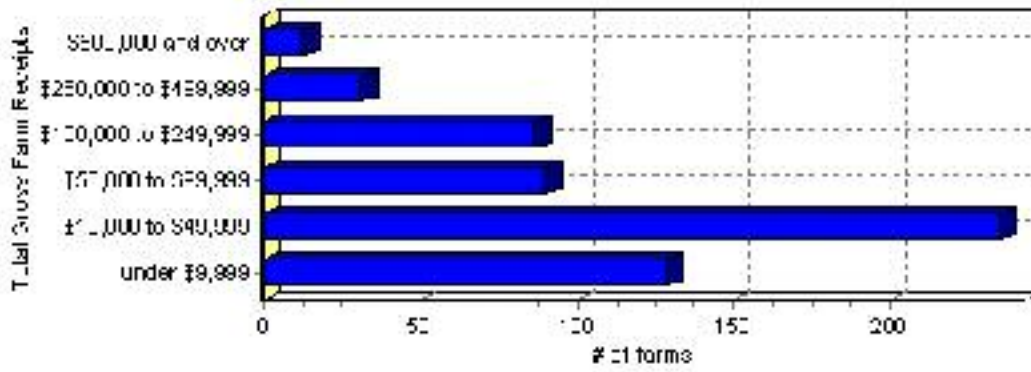
of Farms by Total Farm Area



| Farms by Total Gross Farm Receipts - 2001 | # of Farms | % of total |
|--|------------|------------|
| Farms gross farm receipts - under \$9,999 | 129 | 22.05% |
| Farms gross farm receipts - \$10,000 to \$49,999 | 235 | 40.17% |
| Farms gross farm receipts - \$50,000 to \$99,999 | 90 | 15.38% |
| Farms gross farm receipts - \$100,000 to \$249,999 | 87 | 14.87% |
| Farms gross farm receipts - \$250,000 to \$499,999 | 31 | 5.30% |
| Farms gross farm receipts - \$500,000 and over | 13 | 2.22% |
| Total number of farms reporting | 585 | 100.00% |

Source: Statistics Canada 2001 Census of Agriculture(numbers may not add up due to rounding)

Total Gross Farm Receipts

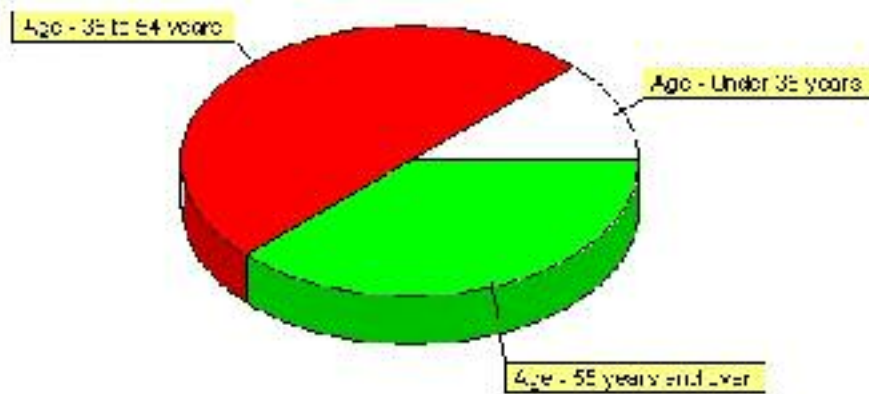


Farming, Continued

| Characteristics of Farm Operators | # | % |
|-------------------------------------|-----|---------|
| Age - Under 35 years | 100 | 12.12% |
| Age - 35 to 54 years | 410 | 49.70% |
| Age - 55 years and over | 310 | 37.58% |
| Average age of operators | 50 | |
| Number of operators - Female | 220 | 26.67% |
| Number of operators - Male | 605 | 73.33% |
| Total number of operators reporting | 825 | 100.00% |

Source: Statistics Canada 2001 Census of Agriculture(numbers may not add up due to rounding)

Age of Farm Operators



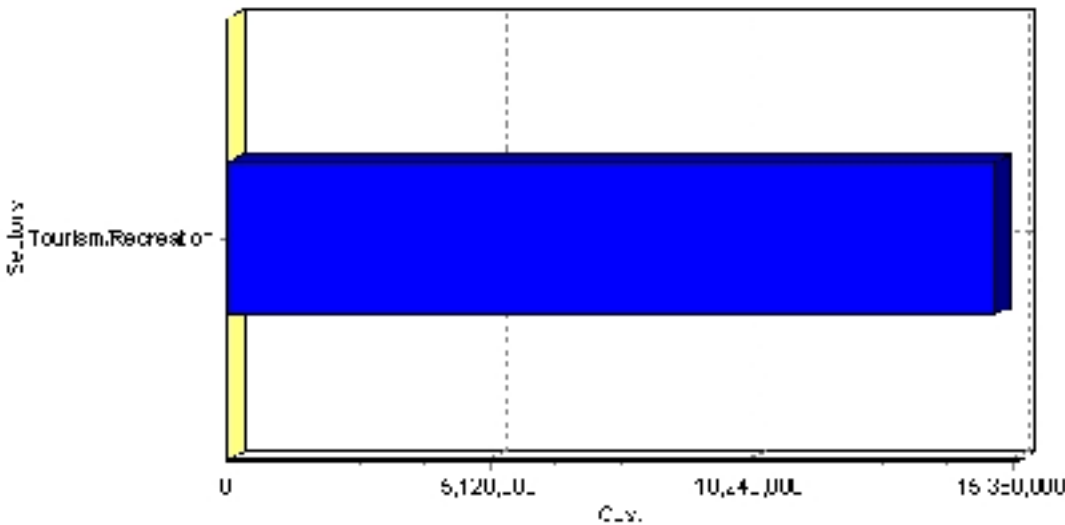
Projects

Summary of Projects in Smoky Lake County as of September 2006

| Project Sector | Number of Projects | Project Cost |
|--------------------|--------------------|--------------|
| Tourism/Recreation | 1 | \$15,000,000 |
| Total | 1 | \$15,000,000 |

This inventory lists projects in Alberta that have recently been completed, are under construction, or are proposed to start construction. Not all projects are listed due to reasons of confidentiality and/or due to information not being available at the time of printing. Project data is obtained from public information sources, where possible, this data has been verified with the project proponent/developer, users of the Inventory may wish to confirm project data with the proponent/developer. The inventory does not breakdown project expenditures by any given year. The cost of a project is the value of expenditures expected over all phases of project construction, which may span over two or more years. Cost of projects listed in the Inventory are estimated values only. Source: Alberta Economic Development, 2004.

Value of Projects by Sector (as of September 2006)



| Project Status | Number of Projects | Project Cost |
|--------------------|--------------------|--------------|
| Under Construction | 1 | \$15,000,000 |
| Total | 1 | \$15,000,000 |

This inventory lists projects in Alberta that have recently been completed, are under construction, or are proposed to start construction. Not all projects are listed due to reasons of confidentiality and/or due to information not being available at the time of printing. Project data is obtained from public information sources, where possible, this data has been verified with the project proponent/developer, users of the Inventory may wish to confirm project data with the proponent/developer. The inventory does not breakdown project expenditures by any given year. The cost of a project is the value of expenditures expected over all phases of project construction, which may span over two or more years. Cost of projects listed in the Inventory are estimated values only. Source: Alberta Economic Development, 2004.

Largest Projects in Smoky Lake County as of September 2006

| Company Name | Project Description | Project Location | Project Cost | Construction Schedule | Status |
|-------------------------|--------------------------------|-------------------------------------|---------------------|------------------------------|--------------------|
| Metis Nation of Alberta | Cultural / Interpretive Centre | Cty of Smoky Lake (S of Smoky Lake) | \$15,000,000 | 2004-2007 | Under Construction |

Disclaimer: Information in this profile has been provided from a variety of external sources. Although every effort has been made to ensure the accuracy, currency and reliability of the content and data, AlbertaFirst.com Ltd. accepts no responsibility in this regard.

© AlbertaFirst.com Ltd., 2006.