

Breton

Welcome

A MESSAGE FROM THE MAYOR

The Honorable Darren Aldous

On behalf of the Village of Breton, I would like to welcome you to our friendly community. We trust your visit will be an enjoyable and memorable experience. Breton is an active and vibrant municipality with a bright and ever expanding future. The vast array of services the community offers has made the Village a central stopping point for travellers of many destinations.

The Village's population is approximately 573 residents and we are proud to serve an outlying area of between 8000 and 10,000 people. Our diversified economic base is supported by agriculture, oil & gas, recreation and logging. Being only an hour away from several major centres has made Breton a choice place to live.

Whether surfing the net or touring the area, I am sure you will enjoy your visit.

Mission Statement - Provide services for the community to enhance the quality of life while maintaining the effective use of resources.

Vision Statement - A progressive community united in kindness and generosity.

Area Overview

The Village of Breton is a small community within easy driving distance of major centres such as Edmonton, Leduc, Drayton Valley, Red Deer and Wetaskiwin. Despite its close proximity to these centres, Breton still offers the "down home" hospitality, friendliness and simpleness in life that can only be found in a rural town and community.

Breton's economy has remained stable for the past five years. Agriculture, oil field activity and logging are a few of the industries in and around the area.

Outdoor recreation is excellent with several lakes nearby offering camping, fishing, swimming and skating. Snowmobiling, horseback riding and cross-country skiing are also popular. Golfing is abundant with two nine-hole golf courses nearby, one within the corporate limits of Breton and one only a mile away. Breton is also proud to have one of the best water supplies in Alberta, both in quality and quantity (it is not metered). With so many benefits, Breton is encouraging growth personally, commercially and professionally. Breton continues to blend monetary advantages with an easy going lifestyle.

Community Services

Family & Community Support Services (FCSS)

FCSS is a municipal-provincial program that helps enhance, strengthen and stabilize family and community life. This is accomplished through the facilitation of programs and the supplementation of existing projects. Some of these include Meals on Wheels, peer support (in the high school), parenting courses, short term counselling and yard/homemaker services. FCSS provides assistance to the elderly, children, families and community in general.

Family & Community Support Services
Carolyn Strand Civic Centre
4916 - 50th Avenue
Box 480

Breton, AB T0C 0P0
Tel: (780) 696-3636
Fax: (780) 696-3590
email: bfcss@telusplanet.net
Director: Deanne Young

Brighter Futures

Brighter Futures provides services and support for parents and children including In-home Visiting, parent groups, children and youth programs and aboriginal programs. Resource materials in the form of books and videotapes are available to borrow from the Resource Centre. While the office to Brighter Futures is located in Breton, it provides services to people in Breton, Drayton Valley, Buck Lake, Alder Flats and other communities in the MD of Brazeau No. 77.

Brighter Futures
Basement of the Carolyn Strand Civic Centre
4916 - 50th Avenue
Box 779
Breton, AB T0C 0P0
Tel: (780) 696-2543
Fax: (780) 696-2564
email: bfutures@telusplanet.net

MUNICIPAL

Village of Breton
Carolyn Strand Civic Centre
4916 - 50th Avenue
Box 480
Breton, AB T0C 0P0
Tel: (780)696-3636
Fax: (780)696-3590
email: vbreton@telusplanet.net
Office Hours: Monday - Friday 8:30 a.m.to 4:00 p.m.

Breton Municipal Library

The library in Breton is an all-round learning and reference centre. In addition to books, it also includes maps, phone books, videos, a jigsaw lending program and information on community events and educational programs. The library has a fully equipped reference room and children's corner.

Breton Municipal Library
Carolyn Strand Civic Centre
4916 - 50th Avenue
Box 447
Breton, AB T0C 0P0
Tel: (780) 696-3740
Fax: (780) 696-3590
email: bretonlibrary@telusplanet.net
Hours: Monday 12:00 noon - 5:00 p.m.
Tuesday 9:00 a.m. - 5:00 p.m.
Wednesday and Thursday 12:00 noon - 5:00 p.m.
Friday - 12:00 noon - 8:00 p.m.
Saturday - 9:00 a.m. - 2:00 p.m.

PROVINCIAL

Provincial Court of Alberta

4911 - 50th Avenue
Breton, AB T0C 0P0

FEDERAL

Canada Post Corporation
5004 - 49th Avenue
Breton, AB T0C 0P0
Tel: (780) 696-3992

Royal Canadian Mounted Police
4724 - 50th Avenue
Breton, AB T0C 0P0
Administration Line: (780) 696-3520
24-Hour Complaint Line: (780) 696-3502

Community Lifestyle

RECREATION

Breton offers a fitness centre at the local high school, tennis court, curling rink, baseball diamonds, two 9-hole golf courses one with a driving range, an outdoor skating rink and a community centre. In addition, the Centraplex which opened in June 1995 houses the pro shop for the Breton Golf and Country Club, Tee Garden Restaurant and a dance studio.

Several organized sports programs are available such as Minor Ball, Minor Soccer, Miss Joanne's School of Dance, the Golden Spur Gymkhana Club, "Youth Night" at both Golf Courses and Curling (Junior Curling).

COMMUNITY ORGANIZATIONS

Breton has a large number of community organizations which proudly portray the avid involvement of Breton and area residents in the community. These organizations include:

- Breton Agricultural Society
(includes the Breton Curling Club)
- Golden Age Friendship Centre
- Breton Golf and Country Club
- Breton & District Historical Society
- Breton Christmas Wishes and Fundraising Foundation
- Breton & District Fish and Game Association
- Breton Minor Ball
- Breton Minor Soccer
- Chamber of Commerce
- Miss Joanne's School of Dance
- Victim Services Unit
- Order of the Royal Purple
- Benevolent Order of Elks
- Golden Spur Gymkhana Club
- Scouts of Canada, including Beavers, Cubs and Scouts

PLACES OF WORSHIP

- Faith Covenant Church
Worship Service: Sunday, 11:00 a.m. 780-696-3669
- Breton Word of Faith Church
Worship Service: Sunday, 10:30 a.m. 780-696-3500
- Our Lady of Fatima Catholic Church
Weekly Mass: Saturday, 7:30 p.m. 780-789-3773 (Thorsby)
- Kingdom Hall of Jehovah's Witnesses
Congregational Bookstudy: Saturday, 9:00 a.m. 780-696-3547

SPECIAL ANNUAL EVENTS/ATTRACTIONS

Coyote Lake Nature Sanctuary

The lack of insecticide spraying for the past 6 years has allowed the bird population to increase dramatically. Consequently this area has become of great interest to both novice and serious bird watchers. Coyote Lake Nature Sanctuary is within fifteen minutes drive from Breton. The Christmas bird count is an annual event.

Canada Day Celebrations

July 1st is an exciting day in the Village of Breton. Local residents as well as people from surrounding communities gather to participate in and watch the festivities of the day. Everyone is welcome to enter a float in the parade which starts at noon. A pancake breakfast starts off the day with children's games, gymkhana events, ball tournaments and horseshoes being just a few of the activities to take part in.

Breton Soil Plots

The Breton Soil Plots were formally established in 1930 to help find suitable farming practices for a wooded soil belt. Today, they are mainly used in researching how various cropping practices affect soils over a long period of time. The Department of Soil Science at the University of Alberta currently own and operate these plots. A field day is held annually near the end of June and includes a series of talks and a tour of the experiments currently being conducted.

Agricultural Bench Fair

An agricultural bench fair is held annually near the middle of July which features friendly competition for local and area residents in several categories.

Breton Museum

The Breton Museum proudly portrays the history of the black settlers to the area and in Alberta. It also depicts the founding, settlement and development of Breton, formerly known as Keystone. Black History month in February is a quite a celebration at the museum. The museum is open daily throughout the summer from 11:00 a.m. to 5:00 p.m. During the off season the museum is happy to open its doors for school tours and private tours.

Breton Golf and Country Club

Breton is home to a beautiful and scenic nine-hole golf course with grass greens. Located within the corporate limits of Breton, the Golf Course offers a relaxed setting, natural splendor and friendly atmosphere. The CentraPlex houses the proshop, Tee Garden Restaurant and a dance studio.

The Breton Golf Course is open 7 days a week April through October. All members of the public are welcome. The Dining Lounge is open year round.

HOSPITALITY

Accommodation

Breton Hotel

4907 - 51 Street, Breton

Breton R.V. Park

47th Street, Breton

(next to CentraPlex)

Big T Motel

Hwy 20 - One Km north of Breton

Restaurants

Big T Restaurant

Hwy 20 - One Km north of Breton

Tee Garden Restaurant

CentraPlex, Breton Golf Course, Breton

Breton Family Dining Steak and Pizza

4907 - 50th Ave.

Breton Lazer Video

51st Street

Economic Base

Breton's economy has been stable for the past five years with the promise of growth being a strong and steady reality. The base for Breton's growing economy is agriculture (grains; cattle, horses, elk, wild pig and ostrich farms; and market gardens], oil field activity and logging.

Economic Facts

Breton is on the edge of timbered land to the west and farm land to the east. The immediate topography is relatively flat with a mixture of open fields along with poplar and pine forests. This attracts wildlife and there is a very high bird population.

MAJOR BUSINESSES

ACCOUNTING SERVICES

- Darren Scott Accounting - (780) 696-3800
- Miniely & Tower Chartered Accountant - (780) 696-2511

APPLIANCE SALES

- True Value Hardware - (780) 696-2557
- Sears Canada - (780) 696-2557

AUTOBODY

- Breton Autobody - (780) 696-3757

AUTOMOTIVE - REPAIRS

- FTG Mechanical Services - (780) 696-2015
- R & A Automotive - (780) 696-2286

AUTOMOTIVE - SUPPLIES

- AIF Breton Ltd. - (780) 696-3551

- True Value - (780) 696-3557

BEAUTY SALONS

- Breton High School Cosmetology Dept (Thursdays, Sept-June)(780) 696-3633
- Breton Hair Design - (780) 696-2509
- Heads Up Family Hair Care - (780) 696-6560

BOTTLE DEPOT

- Breton Bottle Depot - (780) 696-3714

CAMPGROUNDS

- Big Tee Golf Motel & Restaurant - (780) 696-3886
- Breton RV Park - (780) 696-3636 (first come basis - no reservations)

CARPENTRY/CONSTRUCTION

- Dueck Construction - (780) 696- 3749
- Lamb Construction - (780)696-2211

CHIROPRACTORS

- Breton Chiropractic Clinic - (780) 696-2097

CLOTHING

- Sears Canada Catalogue - (780) 696-2557
- True Value Hardware - (780) 696-3557

DENTAL SERVICES

- Breton - Alsike Denture Clinic - (780) 696-3911
- Breton Dental Office - (780) 696-3786
- Snug Fit Denture Clinic - (780) 696-9696

DRY CLEANING SERVICES

- Flowers by Glory (drop off for Page Cleaners) - (780) 696-2557

ELECTRICAL SUPPLIES & SERVICES

- Delta Electric - (780) 696-2178
- True Value Hardware - (780) 696-3557

FARM SUPPLIES

- AIF Breton Ltd. - (780) 696-3551
- True Value Hardware - (780) 696-3557

FINANCIAL INSTITUTIONS

- ATB - Personal Banking Services & ATM - (780) 696-3664

FITNESS

- Breton High School - (780) 696-3633

FLOWER SHOPS

- Flowers by Glory - (780) 696-2557

GAS STATIONS

- Breton Gas & Snacks - (780) 696-2755
- Alsike Mohawk - (780) 696-2399

GIFTWARE

- Breton IDA Pharmacy - (780) 696-3594
- True Value Hardware - (780) 696-3557

GOLF COURSES

- Big Tee Golf Course - (780) 696-3886
- Breton Golf and Country Club - (780) 696-0008

GROCERIES

- Alsike General Store - (780) 696-2399
- Breton Food Town - (780) 696-3933
- Breton Gas and Snacks - (780) 696- 2275
- Breton Family Foods - (780) 696-2441

HARNESS & TACK

- True Value Hardware - (780) 696-3557

HARDWARE

- True Value Hardware - (780) 696-3557

INSURANCE

- Co-operators Insurance - (780) 696-3759
- Hill n' Dale Realty and Insurance - (780) 696-3537

LAUNDROMAT

- Breton Food Town - (780) 696-3933

LAWYERS

- Murray Chilibeck & Horne - (780) 696-3759

LIQUOR STORES

- Breton Hotel Off Sales - (780) 696-2532

OILFIELD SERVICES

- Breton Oilfield Services - (780) 696-2191
- Catmaster Ltd. - (780) - 696-2063
- Gazelles Oilfield Services - (780) 696-3412

OILFIELD SERVICES - RETAIL

- Midfield Supply - (780)696-2000

PAINT & SUPPLIES

- True Value Hardware - (780) 696-3557

PETROLEUM COMPANIES

- Amoco Canada Petroleum Co. - (780) 696-3848
- Penn West Petroleum Co. - (780) 696-3687
- Pembina Resources - (780) 696-3541

PHARMACIES

- Breton IDA Pharmacy - (780) 696-3594

PHOTOGRAPHY

- Photos With Care - (780) 696- 2038

PRESSURE WASH & STEAMING

- Bronco Steaming - (780) 696-2164
- Gazelle's Oilfield Services - (780) 696-3412

PRINTING

- Market Printing - (780) 696-2030
- Mezzoforte Enterprises - (780) 789-2527

RESTAURANTS

- Breton Lazer Video - (780) 696-2240
- Breton Family Dining Steak and Pizza - (780) 696-6966
- Big Tee Golf & Restaurant - (780) 696-3886
- Tee Garden (Breton Golf Course) - (780) 696-2438

SECOND HAND STORES

- Breton New and Used - (780) 696-3954

SIDING AND EAVESTROUGH

- Finishing Touch Exteriors - (780) 696-3595

SPORTING GOODS

- True Value Hardware - (780) 696-3557

SEWING SUPPLIES

- Breton IDA Pharmacy - (780) 696-3594

TAKE-OUT FOODS

- Breton Bigway - (780) 696-3933
- Breton Gas and Snacks - (780) 696-2275
- Breton Family Dining Steak and Pizza - (780) 696-6966
- Breton Lazer Video - (780) 696-2240
- Tee Garden (Breton Golf Course) - (780) 696-2438

TOWING

- Breton Autobody - (780) 696-3757

TRANSPORTATION AND SERVICES

- WC Trucking (1998) Ltd. - (780) 696-3585

TROPHIES Flowers by Glory - (780) 696-2557

- True Value Hardware - (780) 696-3557

VETERINARIAN

- Breton Animal Health & Management Services - (780) 696-3787

VIDEO RENTALS

- Breton Municipal Library - (780) 696-3740
- Breton Lazer Video (780) 696-2240

WELDING SUPPLIES

- Jencor Welding Supplies - (780) 696-3757

Education

Breton is part of the Wild Rose School Division No. 66, headquartered in Rocky Mountain House [Tel: 403-845-3376]. Breton has two public schools. The Breton Elementary School houses grades K to 6 and utilizes various strategies and programs to best meet the needs of the individual students. It's Library boasts a very high circulation and includes computer stations to aid research and support the curriculum. The District Health Board offers a Speech Program in the school to promote language development through speech therapy. Breton High School includes grades 7 to 12. It is a streamlined high tech institution offering a full academic program and 16 out of 22 strands in Career and Technology Studies. It also offers an I.O.P program supplemented with remedial education on a students needs basis. Breton High School has an extensive computer department and was the first school to be on the internet by satellite. The cosmetology department is also well designed, offering students detailed, professional training and cosmetologist services to the public. Distance education is a feature at the school which allows flexibility and choice to students and adults. The community is encouraged to use the school's weight training facility and cross country skis.

Emergency Services

FIRE PROTECTION

Breton contracts fire services from the MD of Brazeau No. 77. A fire station is located in Breton and is manned by volunteer fire fighters and a full-time Fire Chief. In case of emergency, dial 9-1-1.

POLICE SERVICES

Breton is served by a local detachment of the Royal Canadian Mounted Police [RCMP] It is comprised of three members; a Corporal and two Constables as well as a public service position. This detachment is responsible for 1100 square miles including Breton, Winfield, Yeoford, Buck Lake, Alder Flats, Buck Creek, Lindale and Carnwood. It enforces Federal, Provincial and Municipal statutes and is available 24 hours a day. [Tel: 780-696-3502 for emergencies; 780-696-3520 for Administration].

VICTIM SERVICES

The Cardium Victim Services Unit provides immediate crisis intervention to people who are victims of crime or tragedy within the Breton, Drayton Valley and Evansburg RCMP detachment areas. A Co-ordinator, Assistant-Co-ordinator and trained volunteer advocates provide assistance and referral services. For assistance, call: Marnie Szczepanowski 780-542-9888

AMBULANCE SERVICES

Associated Ambulance Services provides 24 hour a day ambulance service to the Breton area. Assistance is readily available when required with an ambulance stationed in the Breton Medical Center and ambulance attendants living within the Village. For emergencies dial 9-1-1.

Health Care

Breton offers an Extended Care Hospital with 23 long term care beds. The conversion of these beds from acute care to long term care was completed and officially opened in the fall of 1994. The residents are encouraged to be as independent, comfortable and active as possible in this excellent facility.

BRETON MEDICAL CENTRE

In the same building as the extended care hospital, is the Breton Medical Centre. It is open Monday to Friday from 10:00 a.m. to 5:00 p.m. The Doctors for this facility are based out of Drayton Valley but schedule certain days to provide services in Breton. Laboratory and x-ray services are available to patients right at the Medical Centre. After 5:00 p.m. there is no Doctor on call. Emergencies must go to nearby hospitals or call the ambulance at 911.

SENIORS HOUSING

Spruce View Court is a seniors' housing complex, owned by the Municipal Government and run by the Brazeau Seniors Foundation. There are 18 self-contained suites. Rents are based on 30% of income.

Key Contacts for Business Development

MUNICIPAL

Village of Breton
4916 - 50 Avenue
Box 480
Breton, AB T0C 0P0
Tel: (780)696-3636
Fax: (780)696-3590
email: vbreton@telusplanet.net

Mayor - Darren Aldous
Deputy Mayor Glory Tornack
Councillor Alan Barker
Councillor Don McDonald
Councillor Kimberly Plaquin
Municipal Administrator - Eileen Simmers

Breton Chamber of Commerce
Box 243
Breton, AB T0C 0P0
Glory Tornack - President
780-696-2557

PROVINCIAL (Updated December 2004)

David Pattison
Director, Edmonton Region
Regional Development Branch
Alberta Economic Development

5th Floor, Commerce Place
10155 - 102 Street
Edmonton, AB T5J 4L6
Tel: 780-427-6648
Fax: 780-422-5804
E-Mail: david.pattison@gov.ab.ca
(updated May 10, 2004)
Jan Couper, Client Services Representative
Tel: 780-427-6291
E-Mail: jan.couper@gov.ab.ca

Tony Abbott
Member of the Legislative Assembly [MLA]
Drayton Valley-Calmor Constituency
#503 Legislature Building
10800 - 97 Avenue
Edmonton AB
T5K 2B6
Tel: 780-415-9466
Fax: 780-422-0351

Constituency Office:
Box 7272
Drayton Valley, Alta.
T7A 1S5
Tel: 780-542-3355
Fax: 780-542-3331
Toll Free: 1-800-542-7307

FEDERAL (Updated May 2001)

Blaine Calkins
Member of Parliament [MP]
Wetaskiwin Constituency
House of Commons
Ottawa, ON K1A 0A6

Phone 1-800-665-0865 or 403-783-5532

Location

The Village of Breton is located in the Municipal District of Brazeau No. 77, at the junction of Secondary Highway 616 [east-west] and Highway 20 [north-south]. It is 108 km southwest of Edmonton and 58 km southeast of Drayton Valley.

Post Secondary Education

Breton residents are at an advantage for obtaining post-secondary education. Easy access can be made to all Edmonton and Red Deer Post-Secondary Institutions. With each center only being an hour from Breton, students and adults can easily enroll in full-time, part-time and distance education courses. The Pembina Consortium in Drayton Valley also offers a variety of adult continuing education classes for certificate programs or for general interest. Other distance education classes can be obtained through the Breton High School.

Taxation

	<u>Residential/Farmland</u>	<u>Non-Residential</u>
2006		
Municipal Tax Rate	12.9700	14.750
Education - Alberta School Foundation Fund Tax Rate	3.43776	5.53952
Seniors Lodge Accommodation Tax Rate	.1018	.1018

The last General Assessment was completed in 1998.

Mill Rates are as of 2006.

- Residential - Public 16.509
- Non-Residential - Public 20.391

Transportation

AIR SERVICES

The nearest commercial and air freight services are at the Edmonton International Airport which is 108 km from Breton.

RAIL SERVICES

Up until a few years ago, Breton was served by a branch line of the Canadian Pacific Railway. This line, however, has since been removed.

HIGHWAYS

Breton is surrounded by several major highways. To the east is Highway 20 which leads south to Sylvan Lake and north to Highway 39 (the connecting highway to Drayton Valley and Leduc). To the south of Breton is Secondary Highway 616, leading west to Highway 22 and east to the Pigeon Lake area.

TRUCK DELIVERY SERVICE

Several regional trucking firms serve Breton and area. Several of these companies are based out Drayton Valley, Rimbey and Edmonton.

BUS SERVICE

N/A

COURIERS AND TAXIS

Courier services are provided via Loomis and Purolator. There are no taxi services available in Breton.

Utilities

ELECTRICAL POWER

EPCOR

Box 1550, Station "M"

Calgary, AB T2P 4P7

Tel: 1-800-667-2345

NATURAL GAS

ATCO Gas
900, 10035 - 105th St.
Edmonton, Alta. T5J 2V6
Tel: (780)542-5202

TELEPHONE

TELUS Communications
Box 2422, Station Main
Edmonton, AB T5J 2S7
Residential Customers: (780)310-2255
Business Customers: (780)310-3100
See the telephone book for more information.

WATER SUPPLY

Breton has an abundant source water approved and certified by Alberta Environment. This high quality resource is utilized in the Village by two wells. The Reservoir, itself, has a capacity of 400,000 gallons. Breton does not meter its water, instead a flat monthly rate is charged to the residents.

WASTE MANAGEMENT

Sewage - Sewage treatment for Breton is provided by a series of lagoons consisting of 4 short and 2 long detention ponds.

Garbage - All residential, commercial and industrial garbage is collected weekly by Canadian Waste Services out of Drayton Valley. Breton has a 40 Yard Bin located in the Public Works Storage Yard. This bin is for residential use only.

Blue Bag Recycling - The Village of Breton will be starting a curb-side bi-weekly blue bag recycling program in September 2006.

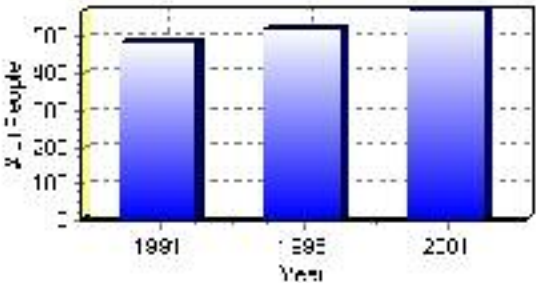
Population

Total Population

Population 2004*	573
Population 2003*	573
Population 2002*	573
Population 2001**	570
Population 2000*	521
Population 1996**	521
Population 1991**	484
Population % change 1991-1996	7.10%
Population % change 1996-2001	9.08%

* Source: Official Population List, Alberta Municipal Affairs
** Source: Statistics Canada 1991, 1996, & 2001 Census

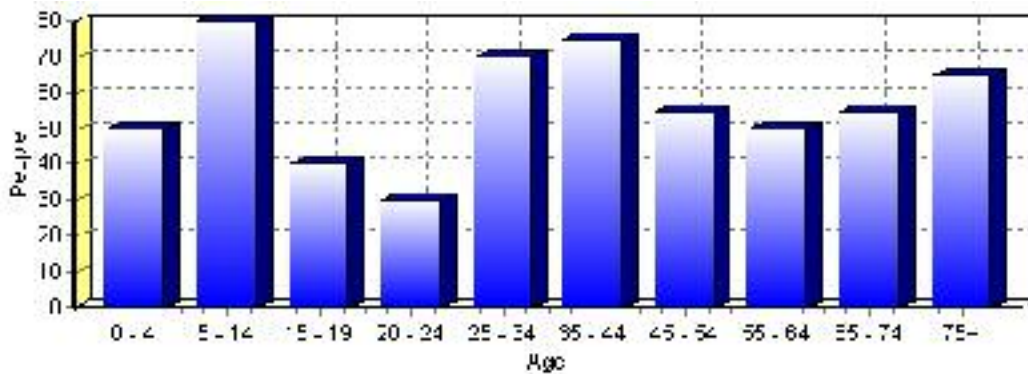
Total Population 1991-2001



Population by Age and Gender	1996 Male	1996 Female	1996 Total	2001 Male	2001 Female	2001 Total
Age 0 - 4	25	15	40	25	25	50
Age 5 - 14	45	40	85	40	40	80
Age 15 - 19	10	15	25	20	20	40
Age 20 - 24	15	15	30	10	20	30
Age 25 - 34	35	30	65	40	30	70
Age 35 - 44	35	35	70	40	35	75
Age 45 - 54	25	30	55	25	30	55
Age 55 - 64	30	25	55	20	30	50
Age 65 - 74	30	25	55	25	30	55
Age 75 and older	15	30	45	30	35	65
Total All Persons	260	260	520	280	290	570

Source: Statistics Canada 1996 & 2001 Census (numbers may not add up due to rounding)

Breton Population by Age Group (2001)

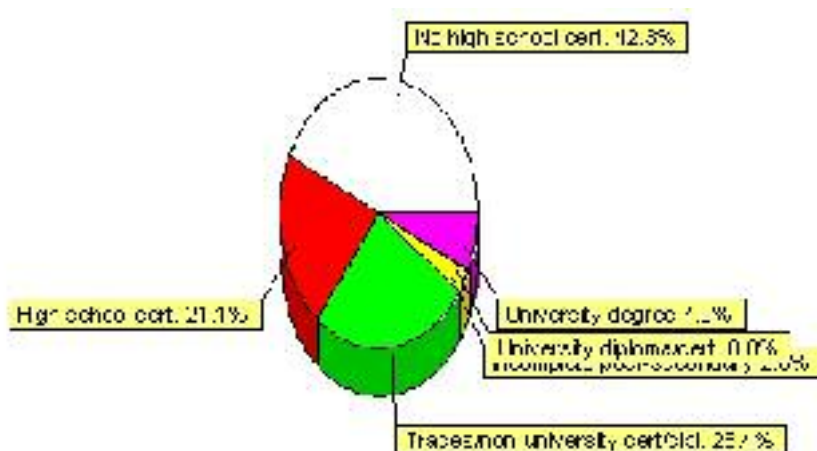


Education Statistics

Highest level of schooling for Population 20yrs and older	2001	%
People without high school certificates	150	42.25%
People with high school certificates	75	21.13%
People with trades or non-university certificate or diploma	90	25.35%
People with post-secondary education (not completed)	10	2.82%
People with university diploma/certificate	0	0.00%
People with university degree	25	7.04%
Total Population 20 years and older	355	100.00%

Source: Statistics Canada 2001 Census (numbers may not add up due to rounding)

Breton Highest Level of Schooling 2001



Population with Post Secondary Qualifications	1996	%	2001	%
Agriculture and biological sciences	0	0.00%	0	0.00%
Commerce, management and business administration	10	9.52%	20	17.39%
Educational, recreational and counseling services	0	0.00%	10	8.70%
Engineering and applied science tech. and trades	35	33.33%	35	30.43%
Engineering and applied sciences	0	0.00%	0	0.00%
Fine and applied arts	10	9.52%	0	0.00%
Health professionals, science and technologies	25	23.81%	10	8.70%
Humanities and related fields	10	9.52%	10	8.70%
Mathematics and physical sciences	0	0.00%	0	0.00%
Social sciences and related fields	0	0.00%	25	21.74%
Other and/or no specialization	0	0.00%	0	0.00%
Total people with post secondary qualifications	105	100.00%	115	100.00%
Females with post-secondary qualifications	55	52.38%	55	47.83%
Males with post-secondary qualifications	50	47.62%	60	52.17%

Source: Statistics Canada 1996 & 2001 Census (numbers may not add up due to rounding)

Labour Force

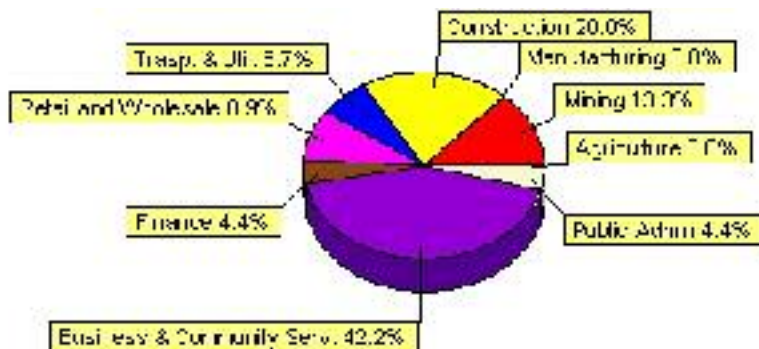
Labour force by activity	1996	2001
In the labour force, both sexes	245	225
Not in the labour force, both sexes	140	175
Total population 15 and over	390	405
Employed, both sexes	200	210
Unemployed, both sexes	50	15
Participation rate, both sexes	62.00%	56.00%
Unemployment rate, both sexes	20.00%	7.00%

Source: Statistics Canada 1996 & 2001 Census (numbers may not add up due to rounding)

Labour Force by Industry Division	1996	% of total	2001	% of total
Agriculture	0	0.00%	0	0.00%
Mining	45	18.37%	30	13.33%
Manufacturing	0	0.00%	0	0.00%
Construction	20	8.16%	45	20.00%
Transportation & Utilities	20	8.16%	15	6.67%
Retail and Wholesale	60	24.49%	20	8.89%
Finance	25	10.20%	10	4.44%
Business & Community Services	65	26.53%	95	42.22%
Public Administration	10	4.08%	10	4.44%
Total All Industries	245	100.00%	225	100.00%

Source: Statistics Canada 1996 & 2001 Census (numbers may not add up due to rounding)

Breton Labour Force By Industry - 2001



Labour Force by Major Occupational Groups	1996	%	2001	%
Management occupations	35	14.29%	30	13.33%
Business, Finances and administrative occupations	40	16.33%	25	11.11%
Natural and applied sciences and related occupations	0	0.00%	0	0.00%
Health occupations	30	12.24%	10	4.44%
Occupations in social science; education; government and religion	0	0.00%	0	0.00%
Occupations in art; culture; recreation and sport	0	0.00%	0	0.00%

Sales and service occupations	35	14.29%	70	31.11%
Trades; transport; equipment operators and related occupations	30	12.24%	60	26.67%
Occupations unique to primary industry	40	16.33%	20	8.89%
Occupations unique to processing; manufacturing and utilities	35	14.29%	0	0.00%
Occupations not elsewhere classified	10	4.08%	0	0.00%
Total - All Occupations (major groups)	245	100.00%	225	100.00%
Females - All Occupations	100	40.82%	110	48.89%
Males - All Occupations	145	59.18%	110	48.89%

Source: Statistics Canada 1996 & 2001 Census (numbers may not add up due to rounding)

Income

Family Income (Number of Families)	1996	%	2001	%
less than \$19,999	20	16.67%	30	23.08%
\$20,000 - \$39,999	35	29.17%	50	38.46%
\$40,000 - \$59,999	45	37.50%	15	11.54%
\$60,000 and over	20	16.67%	65	50.00%
Total number of families	120	100.00%	160	123.08%
Average family income	\$38,437		\$49,270	
Median family income	\$42,174		\$37,100	

Source: Statistics Canada 1996 & 2001 Census (numbers may not add up due to rounding)

Household Income (Number of Households)	1996	%	2001	%
less than \$19,999	65	30.23%	50	22.22%
\$20,000 - \$39,999	55	25.58%	80	35.56%
\$40,000 - \$59,999	70	32.56%	40	17.78%
\$60,000 and over	20	9.30%	65	28.89%
Total number of households	215	100.00%	225	100.00%
Average household income	\$34,096		\$42,982	
Median household income	\$27,756		\$34,696	

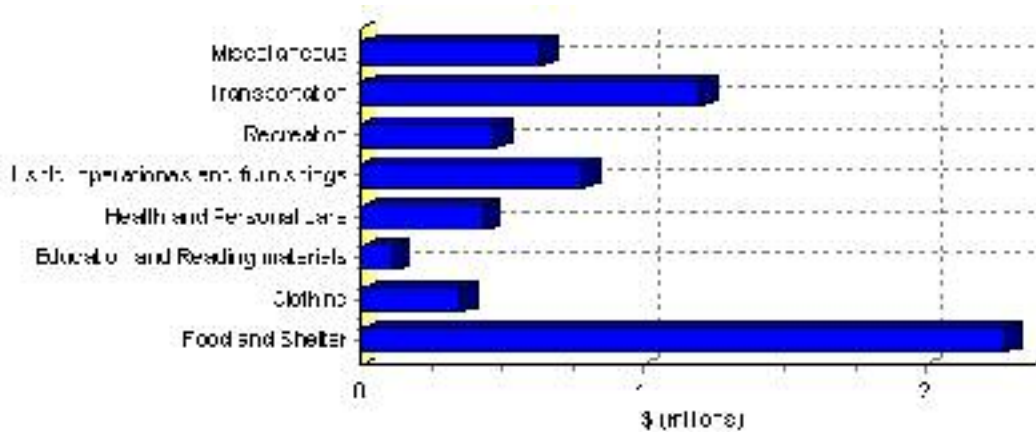
Source: Statistics Canada 1996 & 2001 Census (numbers may not add up due to rounding)

Family Expenditure

Expenditure Category	1992	% of total	1996	% of total
Food and Shelter	\$2,114,730	38.31%	\$2,283,049	36.32%
Clothing	\$360,770	6.53%	\$354,854	5.64%
Education and Reading materials	\$106,835	1.94%	\$113,571	1.81%
Health and Personal care	\$348,060	6.30%	\$431,909	6.87%
Hshld. operations and furnishings	\$605,565	10.97%	\$789,458	12.56%
Recreation	\$424,805	7.69%	\$472,499	7.52%
Transportation	\$1,118,925	20.27%	\$1,205,802	19.18%
Miscellaneous	\$437,350	7.92%	\$635,480	10.11%
Total Current Consumption	\$5,520,620	100.00%	\$6,286,622	100.00%
Total # of Households	215		214	
Average Consumption per Household	\$25,677		\$29,377	

Source: Statistics Canada Family Expenditure Survey 1992 & 1996 (numbers may not add up due to rounding).

Breton Family Expenditures (1996)

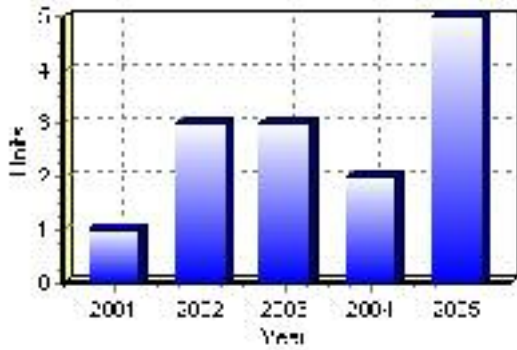


Building Permits

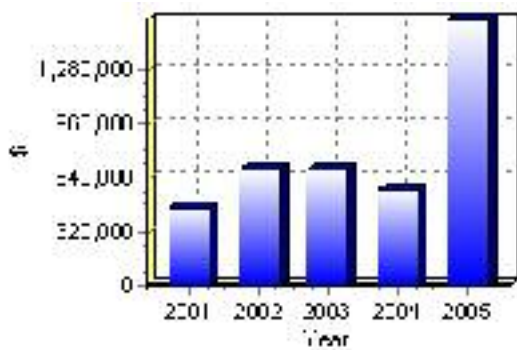
Total Building Permit Values	2001	2002	2003	2004	2005
Building Permits Value, Commercial	\$375,000	\$31,000	\$267,000	\$55,000	\$30,000
Building Permits Value, Industrial	\$0	\$0	\$30,000	\$0	\$500,000
Building Permits Value, Institutional	\$0	\$0	\$0	\$340,000	\$300,000
Building Permits Value, Residential	\$89,000	\$660,000	\$388,000	\$176,000	\$748,000
Building Permits Value, Total	\$464,000	\$691,000	\$685,000	\$571,000	\$1,578,000
Total Housing Starts	1	3	3	2	5

Source: Statistics Canada 2000-2004 Building Permits (numbers may not add up due to rounding)

Total Housing Starts



Value of Building Permits



Dwellings

Occupied Private Dwellings by Type	1996	% of total	2001	% of total
Apartments	10	4.65%	20	8.70%
Detached Duplexes	0	0.00%	5	2.17%
Movable Dwellings	40	18.60%	45	19.57%
Other single attached house	0	0.00%	0	0.00%
Row and semi-detached house	0	0.00%	0	0.00%
Single-detached house	160	74.42%	155	67.39%
Total number of occupied private dwellings	215	100.00%	230	100.00%
Private dwellings, owned	155	72.09%	160	69.57%
Private Dwellings, rented	55	25.58%	65	28.26%

Source: Statistics Canada 1996 & 2001 Census (numbers may not add up due to rounding)

Private Dwellings by Period of Construction	# of Dwellings	% of total
Period of construction, before 1946	0	0.00%
Period of construction, 1946 - 1960	60	27.91%
Period of construction, 1961 - 1970	65	30.23%
Period of construction, 1971 - 1980	75	34.88%
Period of construction, 1981 - 1990	15	6.98%
Period of construction, 1991 - 2001	0	0.00%
Total number of private dwellings constructed	215	100.00%

Source: Statistics Canada 2001 Census (numbers may not add up due to rounding)

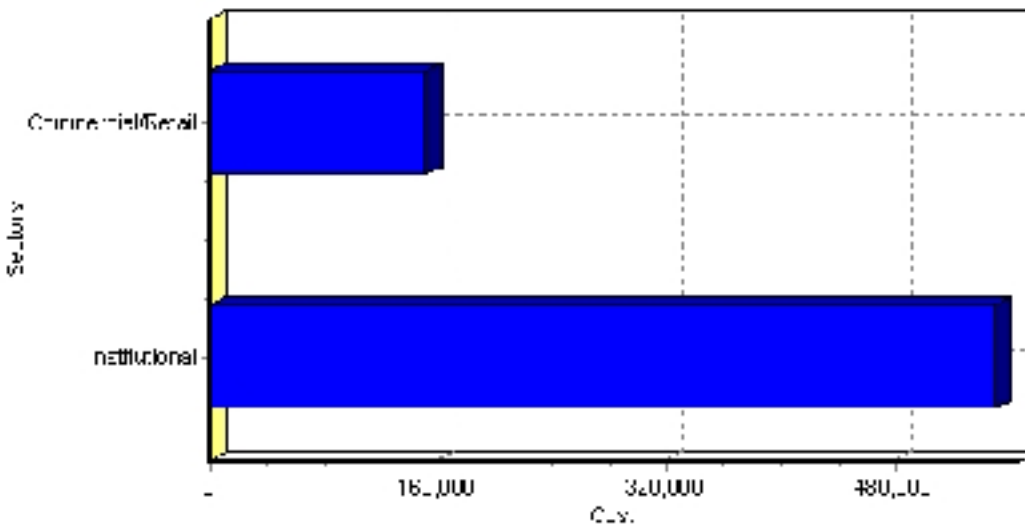
Projects

Summary of Projects in Breton as of September 2006

Project Sector	Number of Projects	Project Cost
Institutional	2	\$550,000
Commercial/Retail	1	\$151,000
Total	3	\$701,000

This inventory lists projects in Alberta that have recently been completed, are under construction, or are proposed to start construction. Not all projects are listed due to reasons of confidentiality and/or due to information not being available at the time of printing. Project data is obtained from public information sources, where possible, this data has been verified with the project proponent/developer, users of the Inventory may wish to confirm project data with the proponent/developer. The inventory does not breakdown project expenditures by any given year. The cost of a project is the value of expenditures expected over all phases of project construction, which may span over two or more years. Cost of projects listed in the Inventory are estimated values only. Source: Alberta Economic Development, 2004.

Value of Projects by Sector (as of September 2006)



Project Status	Number of Projects	Project Cost
Proposed	1	\$400,000
Under Construction	2	\$301,000
Total	3	\$701,000

This inventory lists projects in Alberta that have recently been completed, are under construction, or are proposed to start construction. Not all projects are listed due to reasons of confidentiality and/or due to information not being available at the time of printing. Project data is obtained from public information sources, where possible, this data has been verified with the project proponent/developer, users of the Inventory may wish to confirm project data with the proponent/developer. The inventory does not breakdown project expenditures by any given year. The cost of a project is the value of expenditures expected over all phases of project construction, which may span over two or more years. Cost of projects listed in the Inventory are estimated values only. Source: Alberta Economic Development, 2004.

Largest Projects in Breton as of September 2006

Company Name	Project Description	Project Location	Project Cost	Construction Schedule	Status
Village of Breton	Library Expansion	Breton	\$400,000	-	Proposed
Village of Breton	CENTRAPLEX EXPANSION	Breton	\$151,000	2006-2006	Under Construction
SKCB Architects	RCMP STATION RENOVATIONS	Breton	\$150,000	2006-2006	Under Construction

Disclaimer: Information in this profile has been provided from a variety of external sources. Although every effort has been made to ensure the accuracy, currency and reliability of the content and data, AlbertaFirst.com Ltd. accepts no responsibility in this regard.

© AlbertaFirst.com Ltd., 2006.