

Caroline

www.caroline.ca

Welcome

On behalf of Village Council and Caroline citizens, it is indeed a privilege and a pleasure to welcome you to our 'Gateway to Paradise!' As a Village, we have much to offer our residents, visitors, and the surrounding rural community.

Our Village has all the amenities for visitors, be it accommodations, restaurants, gas and service stations, grocery and baking, camping supplies or sporting goods. Friendliness and Volunteerism instill a strong sense of community. We can boast of being awarded the Provincial 4 Bloom Championship in the 'Communities In Bloom' competition, in the 1 - 1,000 population category.

Experience our natural beauty, views of the Rocky Mountains, our healthy and growing economy and share the sincere warmth of our residents.

If you would like to visit our home page, please go to www.caroline.ca

Mayor
Village of Caroline

Area Overview

The Village of Caroline, a "Community of Choices", is situated in a rolling farming and ranching area about 8 km northeast of the Eastern Slopes area and 50 km east of the Banff National Park Boundary. It has a population of 556.

The total area of the Village is about 412 acres [167 hectares]. The urbanized portion consists of a compact area of development located along Highway 54(22), which runs directly through the centre of the Village. Highway 54(22), or 50th Avenue is considered to be the main street and is the centre of business and community life, with commercial, industrial and public institutional developments located on or very near to it.

Community Services

Municipal

Village of Caroline
Box 148
Caroline Alberta
T0M 0M0
Tel: 403-722-3781
Fax: 403-722-4050

- City Hall
- Public Works
- Family & Community Support Services
- Caroline & District Recreation Board
- Director of Disaster Services
- WestCountry HomeSupport, Storefront Operations
- Caroline Municipal Library

- Neighbourhood Place
- Youth and Family Wellness

Provincial

- Transportation and Utilities
- Drivers Examination and Vehicle Licensing

Federal

- Canada Post Office
- Caroline Sorting Station
- Caroline Supplies Retail Outlet

Community Lifestyle

Recreation

Local recreation facilities include the Big Horn Stampede Grounds [outdoor arena and racetrack, bleachers, concessions, camping], Butte Community Hall, Camp Caroline [private/available for bookings, religious studies, indoor pool, retreats, nature walks], Caroline & District Golf Course [9 holes, clubhouse, camping, driving range], Caroline Complex, Caroline Curling Rink [3 artificial ice sheets], Caroline Royal Canadian Legion, Caroline School [gun facilities, outdoor track, ball diamonds, basketball court], Kurt Browning Arena [skating rink, artificial ice surface], Senior's Drop-in Centre, Shilo Community Club, 52 Street Community [outdoor ice surface], and Little Green Park.

Local community halls include the Butte Community Hall, Crammond Community Hall [hall, kitchen facilities], Dovercourt Community Hall, Elks Youth Hall, Lions Den [hall], and the Living Faith Renewal Centre [private/available for bookings, religious studies, gym facilities, retreats, nature paths].

Facilities for camping include the Caroline Mobile Home & RV Park [RV Parking, full hook-ups - Tel: 403-722-3794], Caroline Municipal RV Park [.5 km east, Tourist Infor, Park attendant, 19 overnight stalls, 8 with electric hook-ups - Tel: 403-722-2210 May - Sept.], Burnstick Lake [3 km west/15 km south, fishing, boating, 65 campsites, 7 tent stalls], Clearwater Trading Campground [8 km west, on the banks of the Clearwater River, 25 stalls/serviced], Clear Springs Campground [14 km west, full hook-ups], Phyllis Lake Campground [16 km west, AB Forestry facility], Tay River Campground [28 km east, on the banks of the Tay River, Forestry facility], Boundary Motel/Campground [28 km west, gateway to Rocky/Clearwater Forest, 55 campsites/fully serviced], and the Swan Lake Campground [30 km west/16 km north, AB Forestry facility].

Community Organizations

- Caroline & District Recreation & Agricultural Society
- Caroline & District Historical Society
- Caroline Elks and Order of the Royal Purple
- Caroline Lions Club
- Caroline Royal Canadian Legion
- Caroline 1st Scouting
- Caroline Farmer's Market
- Clicker's Camera Club
- DanceWest Society
- Little Britches 4-H Club

- Ricinus Wooler Rodeo Association

Religious Services

- Church of the Nazarene
- Community Church
- Living Faith Renewal Centre
- St. Joseph's Catholic Church

Special Annual Events/Attractions

Caroline has a local museum in town which is operated by the Caroline & District Historical Society. The facility has a log cabin, log house, one-room school house, teacherage, main building, equipment, artifacts, and photography displays. The museum has seasonal hours.

Annual Events:

- Big Horn Stampede [FCA events, pony chariots and chucks, parade, rodeo cabaret, Sunday Cowboy Church service, camping on grounds] -- May long weekend
- Gigantic yard sale and seasonal opening of Museum -- May long weekend
- Show and Shine automotive display and competition -- July 1st
- Big West Country Days [community fair, Homecoming, School Reunion] -- 3rd weekend in August
- Christmas Bazaar at Museum -- 4th weekend in November

Hospitality

Accommodation

- Caroline Hotel and Motel
- Gateway Motel
- Bur-Lou Ranch Bed and Breakfast
- Lazy M Guest Ranch Bed and Breakfast

Restaurants

- Agie's Bakery & Coffee Shop
- Baron Family Restaurant & Pizza
- Long Branch Saloon
- Silvergate Cafe
- Sportsman Cafe
- Sportsman Inn and Tavern

Economic Base

Traditionally, agriculture has been the mainstay of the local economy. More recently, forestry and oil & gas production have been of increasing importance to the area. The area has a moderate soil quality rating for crop production, being mainly Class 3, 4 and 5 Canada Land Inventory. Mixed farming and ranching remain the prevailing agricultural operations.

The largest sour gas discovery in Alberta, in the last 20 years was made in the area by Shell Canada in 1986. The development of the Caroline Swan Hills Gas Field, with an estimated 2 trillion cubic foot natural gas field and the many economic spin-offs, has

contributed to growth in the area.

Recent developments by West Fraser LVL have also added to the local economy. Historically, numerous sawmills and logging outfits were located in and around Caroline, with many land owners clearing farmland and operating their own lumber mills. Today, area logging is on a much bigger scale, with Caroline seeing many loads of timber being trucked both east and west.

Recreation and tourism are becoming increasingly significant to the local economy. Up to 3,500 visitors from across Canada, Switzerland, Holland, the Philippines, Finland, the Ukraine, Germany, Australia and Great Britain registered at the Tourist Information Centre in the 2005 season.

Economic Facts

Economic activity in the Caroline area includes: agriculture -- mixed farming and ranching, equine services, bulk fertilizer and feed outlets, veterinary service and supplies, rodeo stock contractors; small business -- auto and farm machinery parts and repairs, accounting and financial service, notary public service, lumber and building materials, gas and garage, hair/beauty and tanning salons, plumbing and heating, drywall and painters, tire sales and repairs, video rentals; retail stores -- grocery, bakery, hardware, sporting goods, camping supplies, gardening centre, florist, convenience and novelty, new and used, liquor outlets; oil & gas spin-off services -- oilfield maintenance services, evacuation and oilfield construction, landscaping, welders, graders and back-hoes, steam and pressure trucks; tourism spin-off services -- hotels, restaurants, bed and breakfast, campgrounds, golf course; trucking and freight -- gravel, logging, oil, water and equipment hauling, courier services; and forestry -- logging contractors, bunchers, fellers, delimiters, and trucking, small sawmills and post peelers.

Major Businesses Products/Services

- West Fraser LVL
- Shell Canada Sour Gas Field

Financial Institutions

ATB Financial

Education

Caroline is part of the Wild Rose School Division #66, headquartered in Rocky Mountain House [Tel: 403-845-3376].

Daycare/Nursery

- Caroline Playschool
- Early Childhood Services

Public Caroline

School provides education for Grades 1 to 12.

Separate

N/A

Private

Living Faith Christian School [1-12]. Also, bussing is available to Rocky Christian School [K-9], located in Rocky Mountain House.

Emergency Services

Tel: 9-1-1 for all Emergencies

Fire Protection

Caroline is served by the Caroline & District Volunteer Fire Department . The department has 2 fire/pumper units, 1 water tanker, rescue unit, Jaws of Life, and a firehall and training facility. The department has 20 members.

Police Services

Caroline is served by the Sundre detachment of the Royal Canadian Mounted Police [RCMP] [Tel: 403-638-3655 - office].

Ambulance Services

Caroline is served by the Caroline & District Volunteer Ambulance.

Health Care

Hospital services are available in Innisfail, Sundre, Rocky Mountain House and Red Deer, who are all part of the David Thompson Health Region (DTHR).

Other medical services include the regional health unit which provides public support and home care [DTHR], and HomeSupport [HomeSupport, Caroline Meals on Wheels, West Country HomeSupport and Lifeline Programs].

Services for seniors include the Caroline & District Senior's Drop-In Centre and the Mountain Sunset Manor [8 self-contained units].

Key Contacts for Business Development

Municipal

Village of Caroline
Box 148
Caroline Alberta
T0M 0M0
Tel: 403-722-3781
Fax: 403-722-4050
administration@telus.net

Gerri Grieve
Mayor

Michael Haugen
Chief Administrative Officer
administrator@caroline.ca

Deena Knight
Manager
Caroline and District Chamber of Commerce
Box 90
Caroline, Alberta
Tel: 403-722-4066
ccoc@telus.net

Provincial (Updated December 2004)

Alberta Economic Development
2nd Floor, Provincial Building
4920 - 51 Street
Red Deer, Alberta
T4N 6K8
Tel: 403-340-5300
Fax: 403-340-5231
Andre Tremblay, Regional Manager
andre.tremblay@gov.ab.ca
Dawna Allard, Regional Development Officer
dawna.allard@gov.ab.ca
Lisa Houle, Regional Project Officer
lisa.houle@gov.ab.ca

Hon. Ty Lund
Minister of Infrastructure
Member of the Legislative Assembly [MLA]
Rocky Mountain House Constituency
#408 Legislature Building
10800 - 97 Avenue
Edmonton, Alberta
T5K 2B6
Tel: 780-427-2080
Fax: 780-422-2722

Constituency Office:
P.O. Box 1245
5115 - 50 Street
Rocky Mountain House AB
T0M 1T0
Tel: 403-845-5154
Fax: 403-845-5525

Federal (Updated May 2001)

Myron Thompson
Olds Constituency
601 Justice Building
House of Commons
Ottawa, Ontario
K1A 0A6
Tel: 800-667-0410
Fax: 613-Unavailable
ThompM1@parl.qc.ca

Constituency Office:
Unavailable
Unavailable
Unavailable
Tel: 403-Unavailable
Fax: 403-Unavailable

Location

The Village of Caroline is located in the Clearwater County 99, in the Alberta Foothills. It is 41 km southeast of Rocky Mountain House, 88 km southwest of Red Deer, and 61 km west of Innisfail.

Post Secondary Education

Adult continuing education programs are available from the Caroline Further Education Council, Rocky Further Education Council, Pembina Educational Consortium, and Advanced Education and Career Development.

Residents of Caroline also have access to Olds Agricultural College, located in Olds; Red Deer College, located in Red Deer or Rocky Mountain House at the Confluence Campus.

Taxation

	<u>Residential/Farmland</u>	<u>Non-Residential</u>
2005		
Municipal Tax Rate	16.9050	16.9050
Education - Alberta School Foundation Fund Tax Rate	4.8420	7.6080
Seniors Lodge Accommodation Tax Rate	.1060	.1740

Mill Rates [2002]

- Residential - Public 23.10
- Residential - Separate N/A
- Non-Residential - Public 26.51
- Non-Residential - Separate N/A

Transportation

Air Service

Local airstrips are located at Rocky Mountain House, Sundre and Innisfail. The nearest commercial and air freight services are available at Calgary International Airport.

Rail Service

N/A

Highways

Connecting highways are Highway 54, leading east to Calgary, Red Deer and Edmonton via Highway 2, and Highway 22, leading north to Rocky Mountain House and Drayton Valley, etc., and also south to Sundre, Cochrane, Calgary, and the TransCanada Highway.

Trucking Firms

- Pioneer Transport

Bus Services

Greyhound Bus Lines operates from Rocky Mountain House, Innisfail, and Red Deer.

Couriers and Taxis

WestCountry Delivery, Loomis, and Purolator.

Utilities

Electrical Power

Wireline Service Provider:

Fortis Alberta

Tel: 403-310-9473

Energy Retailer:

EPCOR

Tel: 403-310-4300

Natural Gas

Line Service Provider:

ATCO

Tel: 403-310-5678

Gas Retailer:

Direct Energy

Tel: 866-420-3174

Telephone

Telus

Tel: 403-310-2255

Water Supply

The source of water is two village wells. The reservoir capacity is 200,000 gallons. Caroline's water and sewage treatment facilities are both designed to serve about 800 people, according to the standards of Alberta Environment. The water distribution system has recently been improved by the installation of a new reservoir and pressurization facility, in 1988. The sewage system, located south of the Village, is treated by an aeration lagoon.

Water is billed on a bi-monthly basis. Residential users are billed for water, sewer & garbage services \$72 bi-monthly.

Waste Management

Sewage treatment is provided by 2 aerated lagoons. The residential usage rate is \$14.00 per month. The commercial rate is the minimum applicable, according to average water usage.

Solid waste from the Village is hauled to a transfer station located 5 miles to the west and is operated by the Rocky Mountain Regional Waste Authority. The residential usage rate is \$7.00 per month. The commercial usage rate is \$7.00 per once a week pick-up, \$14.00 per twice a week pick-ups, and \$21.00 per thrice a week pick-ups.

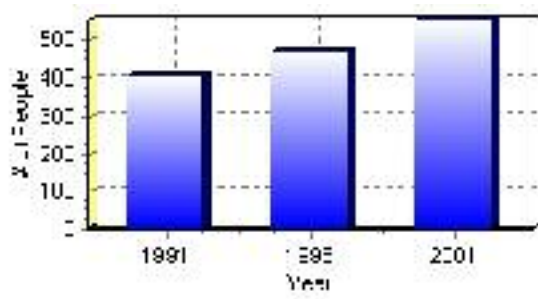
Population

Total Population

Population 2004*	556
Population 2003*	556
Population 2002*	556
Population 2001**	555
Population 2000*	472
Population 1996**	472
Population 1991**	407
Population % change 1991-1996	13.77%
Population % change 1996-2001	15.11%

* Source: Official Population List, Alberta Municipal Affairs
** Source: Statistics Canada 1991, 1996, & 2001 Census

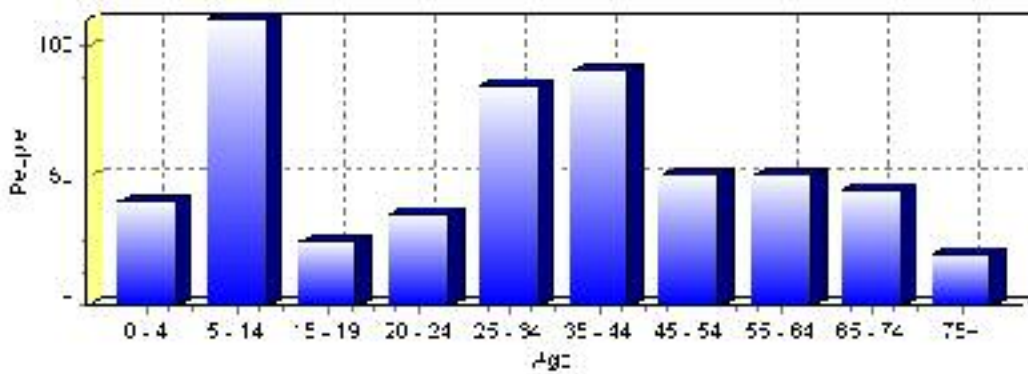
Total Population 1991-2001



Population by Age and Gender	1996 Male	1996 Female	1996 Total	2001 Male	2001 Female	2001 Total
Age 0 - 4	15	25	40	20	20	40
Age 5 - 14	45	40	85	55	55	110
Age 15 - 19	15	15	30	10	15	25
Age 20 - 24	20	20	40	20	15	35
Age 25 - 34	25	30	55	40	45	85
Age 35 - 44	35	35	70	50	40	90
Age 45 - 54	15	15	30	25	25	50
Age 55 - 64	25	20	45	20	30	50
Age 65 - 74	15	20	35	30	15	45
Age 75 and older	5	20	25	0	20	20
Total All Persons	225	245	470	285	270	555

Source: Statistics Canada 1996 & 2001 Census (numbers may not add up due to rounding)

Caroline Population by Age Group (2001)

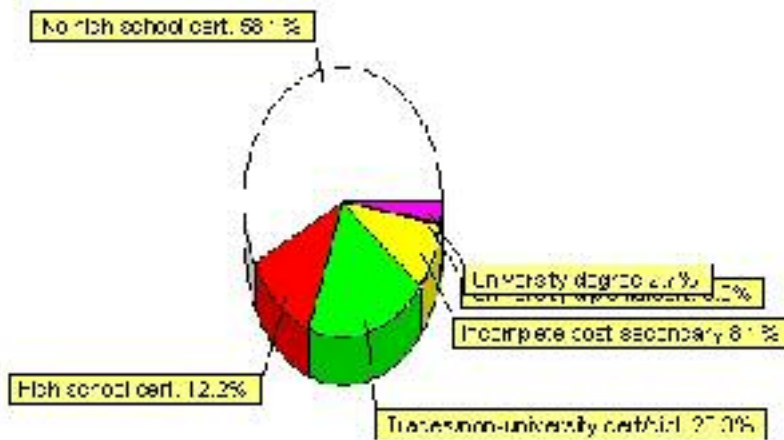


Education Statistics

Highest level of schooling for Population 20yrs and older	2001	%
People without high school certificates	215	58.11%
People with high school certificates	45	12.16%
People with trades or non-university certificate or diploma	75	20.27%
People with post-secondary education (not completed)	30	8.11%
People with university diploma/certificate	0	0.00%
People with university degree	10	2.70%
Total Population 20 years and older	370	100.00%

Source: Statistics Canada 2001 Census (numbers may not add up due to rounding)

Caroline Highest Level of Schooling 2001



Population with Post Secondary Qualifications	1996	%	2001	%
Agriculture and biological sciences	0	0.00%	0	0.00%
Commerce, management and business administration	15	15.79%	10	13.33%
Educational, recreational and counseling services	10	10.53%	10	13.33%
Engineering and applied science tech. and trades	50	52.63%	35	46.67%
Engineering and applied sciences	0	0.00%	0	0.00%
Fine and applied arts	10	10.53%	20	26.67%
Health professionals, science and technologies	0	0.00%	20	26.67%
Humanities and related fields	0	0.00%	0	0.00%
Mathematics and physical sciences	0	0.00%	0	0.00%
Social sciences and related fields	0	0.00%	0	0.00%
Other and/or no specialization	0	0.00%	0	0.00%
Total people with post secondary qualifications	95	100.00%	75	100.00%
Females with post-secondary qualifications	25	26.32%	25	33.33%
Males with post-secondary qualifications	70	73.68%	50	66.67%

Source: Statistics Canada 1996 & 2001 Census (numbers may not add up due to rounding)

Labour Force

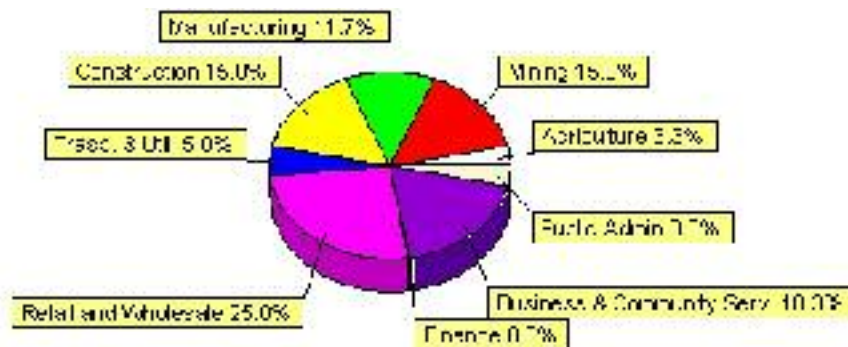
Labour force by activity	1996	2001
In the labour force, both sexes	210	305
Not in the labour force, both sexes	130	105
Total population 15 and over	340	410
Employed, both sexes	160	270
Unemployed, both sexes	50	35
Participation rate, both sexes	61.00%	74.00%
Unemployment rate, both sexes	23.00%	12.00%

Source: Statistics Canada 1996 & 2001 Census (numbers may not add up due to rounding)

Labour Force by Industry Division	1996	% of total	2001	% of total
Agriculture	20	9.76%	10	3.33%
Mining	35	17.07%	45	15.00%
Manufacturing	0	0.00%	35	11.67%
Construction	10	4.88%	45	15.00%
Transportation. & Utilities	10	4.88%	15	5.00%
Retail and Wholesale	50	24.39%	75	25.00%
Finance	0	0.00%	0	0.00%
Business & Community Services	60	29.27%	55	18.33%
Public Administration	0	0.00%	10	3.33%
Total All Industries	205	100.00%	300	100.00%

Source: Statistics Canada 1996 & 2001 Census (numbers may not add up due to rounding)

Caroline Labour Force By Industry - 2001



Labour Force by Major Occupational Groups	1996	%	2001	%
Management occupations	20	9.52%	10	3.28%
Business, Finances and administrative occupations	10	4.76%	30	9.84%
Natural and applied sciences and related occupations	10	4.76%	0	0.00%
Health occupations	0	0.00%	10	3.28%
Occupations in social science; education; government and religion	0	0.00%	0	0.00%
Occupations in art; culture; recreation and sport	0	0.00%	0	0.00%

Sales and service occupations	65	30.95%	85	27.87%
Trades; transport; equipment operators and related occupations	25	11.90%	115	37.70%
Occupations unique to primary industry	45	21.43%	30	9.84%
Occupations unique to processing; manufacturing and utilities	35	16.67%	15	4.92%
Occupations not elsewhere classified	0	0.00%	0	0.00%
Total - All Occupations (major groups)	210	100.00%	305	100.00%
Females - All Occupations	85	40.48%	110	36.07%
Males - All Occupations	125	59.52%	190	62.30%

Source: Statistics Canada 1996 & 2001 Census (numbers may not add up due to rounding)

Income

Family Income (Number of Families)	1996	%	2001	%
less than \$19,999	35	43.75%	35	29.17%
\$20,000 - \$39,999	10	12.50%	60	50.00%
\$40,000 - \$59,999	35	43.75%	30	25.00%
\$60,000 and over	0	0.00%	10	8.33%
Total number of families	80	100.00%	135	112.50%
Average family income	\$34,821		\$37,008	
Median family income	\$42,586		\$31,991	

Source: Statistics Canada 1996 & 2001 Census (numbers may not add up due to rounding)

Household Income (Number of Households)	1996	%	2001	%
less than \$19,999	80	43.24%	85	37.78%
\$20,000 - \$39,999	30	16.22%	80	35.56%
\$40,000 - \$59,999	55	29.73%	40	17.78%
\$60,000 and over	10	5.41%	20	8.89%
Total number of households	185	100.00%	225	100.00%
Average household income	\$29,535		\$33,109	
Median household income	\$22,068		\$29,665	

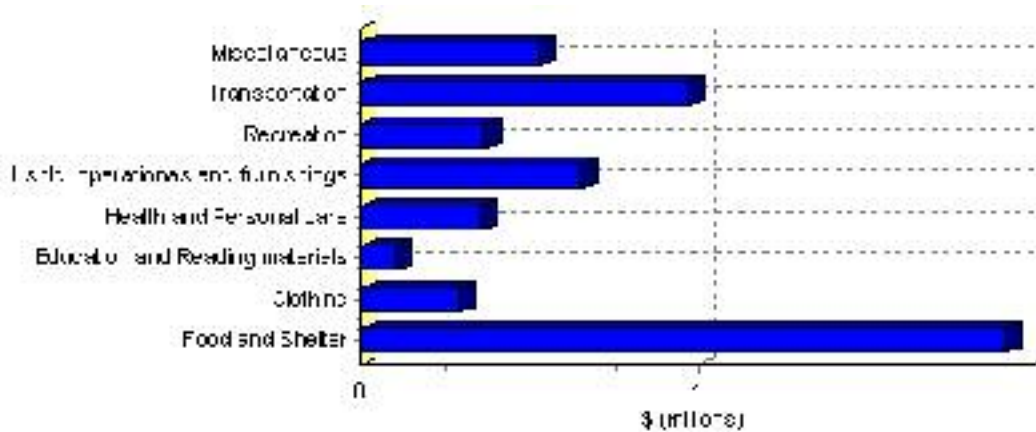
Source: Statistics Canada 1996 & 2001 Census (numbers may not add up due to rounding)

Family Expenditure

Expenditure Category	1992	% of total	1996	% of total
Food and Shelter	\$1,474,000	39.39%	\$1,907,011	36.90%
Clothing	\$226,690	6.06%	\$287,408	5.56%
Education and Reading materials	\$55,770	1.49%	\$97,782	1.89%
Health and Personal care	\$244,600	6.54%	\$357,957	6.93%
Hshld. operations and furnishings	\$402,700	10.76%	\$649,893	12.57%
Recreation	\$239,870	6.41%	\$369,467	7.15%
Transportation	\$775,690	20.73%	\$973,195	18.83%
Miscellaneous	\$320,120	8.55%	\$525,520	10.17%
Total Current Consumption	\$3,742,450	100.00%	\$5,168,233	100.00%
Total # of Households	170		186	
Average Consumption per Household	\$22,014		\$27,786	

Source: Statistics Canada Family Expenditure Survey 1992 & 1996 (numbers may not add up due to rounding).

Caroline Family Expenditures (1996)

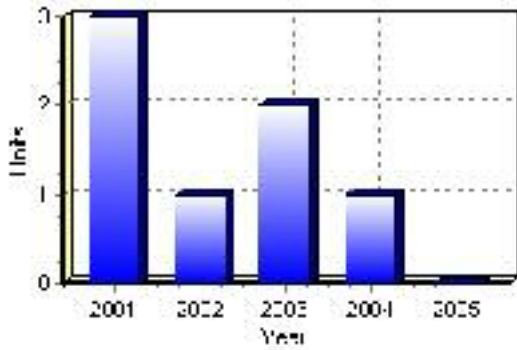


Building Permits

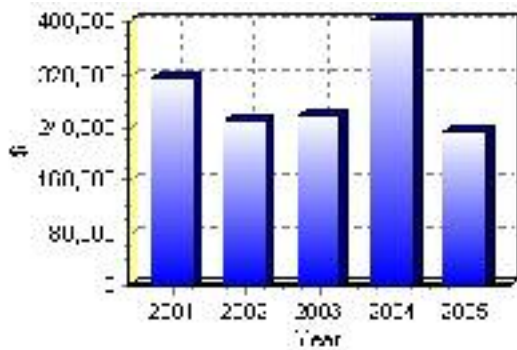
Total Building Permit Values	2001	2002	2003	2004	2005
Building Permits Value, Commercial	\$92,000	\$0	\$18,000	\$0	\$200,000
Building Permits Value, Industrial	\$0	\$0	\$30,000	\$0	\$0
Building Permits Value, Institutional	\$0	\$0	\$0	\$250,000	\$0
Building Permits Value, Residential	\$224,000	\$248,000	\$209,000	\$154,000	\$34,000
Building Permits Value, Total	\$316,000	\$248,000	\$257,000	\$404,000	\$234,000
Total Housing Starts	3	1	2	1	0

Source: Statistics Canada 2000-2004 Building Permits (numbers may not add up due to rounding)

Total Housing Starts



Value of Building Permits



Dwellings

Occupied Private Dwellings by Type	1996	% of total	2001	% of total
Apartments	10	5.41%	10	4.44%
Detached Duplexes	0	0.00%	5	2.22%
Movable Dwellings	60	32.43%	80	35.56%
Other single attached house	0	0.00%	5	2.22%
Row and semi-detached house	10	5.41%	30	13.33%
Single-detached house	105	56.76%	100	44.44%
Total number of occupied private dwellings	185	100.00%	225	100.00%
Private dwellings, owned	150	81.08%	165	73.33%
Private Dwellings, rented	35	18.92%	55	24.44%

Source: Statistics Canada 1996 & 2001 Census (numbers may not add up due to rounding)

Private Dwellings by Period of Construction	# of Dwellings	% of total
Period of construction, before 1946	10	4.35%
Period of construction, 1946 - 1960	40	17.39%
Period of construction, 1961 - 1970	55	23.91%
Period of construction, 1971 - 1980	90	39.13%
Period of construction, 1981 - 1990	25	10.87%
Period of construction, 1991 - 2001	10	4.35%
Total number of private dwellings constructed	230	100.00%

Source: Statistics Canada 2001 Census (numbers may not add up due to rounding)

Disclaimer: Information in this profile has been provided from a variety of external sources. Although every effort has been made to ensure the accuracy, currency and reliability of the content and data, AlbertaFirst.com Ltd. accepts no responsibility in this regard.

© AlbertaFirst.com Ltd., 2006.