

Pincher Creek

www.pincher-creek.com

Welcome

Pincher Creek is a thriving community nestled near the Canadian Rockies in southwestern Alberta. We are proud of our community and the amenities that we host.

The surrounding area is a combination of beauty and recreational settings. Wildlife roam freely in compatibility with the people, exploring and utilizing the many parks and open spaces.

The Town Council welcome you to visit our community and enjoy the pleasures of the best kept secret in Alberta, Pincher Creek.

Yours truly,

Don Anderberg
Mayor of Pincher Creek



Area Overview

Located on the edge of the Rocky Mountains, Pincher Creek has it all; water, mountains, rolling hills, prairie, and some of the most breathtaking scenery in the world. Originally developed for its agricultural possibilities, the Pincher Creek area provides a great variety of opportunities for both pleasure and business.

Pincher Creek offers year round recreational opportunities. Windsurfing, boating, water skiing, camping, hiking, kite flying, fishing and berry picking are some of the summer activities popular in the area. Downhill skiing at Castle Mountain Resort, snowmobiling, and cross-country skiing opportunities in the mountains, along with hunting and ice fishing are some of the winter sports.

Part of Pincher Creek's economic strength is based on the natural gas industry. Currently the Shell Canada Gas Plant, located south of Pincher Creek, is one of the major employers in the area.

Completed in 1992, the Oldman Dam supplies water to 170,000 acres of farmland, provides recreation, and has a small hydroelectric site.

Studies in the 1970's showed the area's potential for wind and solar energy. Pincher Creek is a prime location for windfarms.

To date we have the Cowley Ridge Windplant with 72 wind turbines and the Castle River Wind Farm with 60 wind turbines plus six

other small wind farms. Agriculture remains the heart of Pincher Creek's economy. The cattle industry, along with a diverse group of rural enterprises, has developed a new attitude towards "agribusiness". This includes a modern lifestyle and a desire to build a sustainable future, while maintaining the values of the old west.

The fastest growing industry is Tourism. Pincher Creek is home to many wonderful tourism destination spots including [Kootenai Brown Pioneer Village](#), 3 Rivers Rock & Fossil Museum, [Lebel Mansion historic site](#), and Heritage Acres. Bed and Breakfasts, guest ranches, and guiding and outfitting businesses are prospering. The recreation possibilities, natural beauty, native culture, agricultural background, and renewable energy projects attract increasing numbers of tourists.

Pincher Creek is within a short drive of several tourist destinations, including The Frank Slide, Castle Mountain Resort, Waterton Lakes National Park, The Remington Carriage Centre, Fort MacLeod and Head-Smashed-In Buffalo Jump. For tourists and residents alike, Pincher Creek truly is South Western Alberta's "**Centre of Adventure**".

Advantages of living and/or doing business in Pincher Creek include:

- * **SAFE** - Crime is something you read about in the big city papers
- * Well rounded business community
- * Well rounded recreational amenities
- * Easy access to markets in Southern Alberta, Eastern BC and the North West U.S.
- * Young, keen, well educated labour force
- * Low land prices
- * Abundant raw resources
- * Reasonable taxes
- * Geographical location - close proximity to large cities, mountains, rivers, lakes and foothills
- * Mild winters
- * Lifestyle - Close knit community atmosphere
- * Neighbours are your friends
- * Excellent schools, medical facilities, churches, museum, arts and crafts
- * Environmentally clean and friendly.

Community Services

Real Estate Offices

Century 21

Box 309

Pincher Creek, AB. TOK 1W0

Tel: 627-4646 Fax: 627-3247

Website: www.century21pinchercreek.com

Coldwell-Banker

Box 2594

Pincher Creek, AB. TOK 1W0

Tel: 627-3388 Fax: 627-2942

Website: www.coldwellbanker.ca

Remax

Box 1958

Pincher Creek, AB. TOK 1W0

Tel: 627-2727 Fax: 627-4988

Website: www.remax-pinchercreekab.com

Royal LePage South Country

Box 124

Pincher Creek, AB T0K 1W0
Tel: 627-4281 Fax: 627-4704
Website: www.royalpage.ca

Municipal

Town of Pincher Creek
Box 159
Pincher Creek, Alberta
T0K 1W0
Telephone: 403-627-3156
Email: pctown@telusplanet.net
Website: www.pincher-creek.com
Fax: 403-627-4784

Municipal District of Pincher Creek
Box 279
Pincher Creek, Alberta
T0K 1W0
Telephone: 403-627-3130
Email: mdpinch@telusplanet.net
Website: www.mdpinchercreek.com
Fax: 403-627-5070

Pincher Creek & District Chamber of Economic Development
Box 2287
Pincher Creek, Alberta
T0K 1W0
Telephone: 403-627-5199 or 403-627-5855
Email: pcinfo@telusplanet.net
Website: www.pincher-creek.com
Fax: 403-627-5850

Pincher Creek Public Library

Provincial Building

Court House

Federal

Post Office
Royal Canadian Mounted Police

Community Lifestyle

Recreation/Leisure

- Beauvais Lake
- [Castle Mountain Ski Resort](#)
- Chinook Bowling Lanes and Squash Courts
- Curling Rink

- Fox Theatre
- 9 Hole Golf Course & Clubhouse
- Heritage Acres [Antique Machinery & Crystal Village]
- Ice Arena
- Joe's Gym Weight Training Room
- Kootenai Brown Pioneer Village
- Lebel Mansion & Art Gallery
- Lundbreck Falls
- Multi-Purpose Center: includes Library/Swimming Pool /Active Range Physiotherapy and Fitness Centre
- Murals & Silhouettes
- Napi Friendship Centre
- Oldman River Dam
- Pincher Creek Parks & Recreation [400m Track, Tennis Courts, Ball Parks, Soccer Fields]
- Ranchland Bingo
- Robbie Burns Fish Pond [Senior Citizens and Handicapped People]
- Three Rivers Rock and Fossil Museum
- Creekbank walkway, cross-country skiing, hiking and snowmobiling

**For more information please visit us at the Visitor Information Center located in Pioneer Place,
1037 Bev McLachlin Drive
627-5199/627-5855**

pcinfo@telusplanet.net

www.pincher-creek.com

Campgrounds

Alberta Parks & Protected Areas (403) 627-1116

- Beauvais Lake (Provincial)
- Oldman River Dam (Provincial)

Windy Point

Cottonwood

Island View

Rocky Mountain Camping (403) 563-5395

Beaver Mines Lake (Provincial)

Castle Falls

Syncline Group Campground

Castle River Rodeo Grounds

Lundbreck Falls

Lynx Creek

Maycroft

Camp Impeesa (403) 627-4805

Private

Cleland's Trailer Court (403) 627-4249

Pincher Creek Veterans Memorial (403) 627-4322

Park & Campground

Sleepy Hollow (403) 627-2033

Waterton Dam (Provincial) (403) 653-2522

Community Organizations

- 4 H Club and District Council
- 5 Pin Bowlers Association
- Agricultural Society
- Allied Arts Council
- Bridge Club
- Brownies/Guides
- Castle Mountain Ski Resort
- Chamber of Economic Development
- Children of the Wind Kite Festival
- Chinook Country Bingo Assoc.
- Chinook Health Region
- Community Band
- Cultural Affairs Committee
- Curling League
- Dolphin Swim Club
- Ducks Unlimited
- Elks Club
- Figure Skating Club
- Golf Club
- Gymnastics Club
- Heritage Acres [Antique Machinery & Crystal Village]
- Joe's Weight Training Club
- Junior Forest Warden
- Knights of Columbus
- Lebel House Quilters
- Lions Club
- Minor Baseball/Hockey/Soccer
- Newcomers
- P.C. Fish & Game Trophy Club
- P.C. Rec. & Comm. Serv.
- Pincher Planters
- Ramrodders Black Powder Club
- Rocky Mountain Elk Foundation
- Rotary Club of Pincher Creek
- Royal Canadian Legion #43
- Royal Purple
- Scout/Cubs/Beavers
- Soaring Council
- S.P.C.A.
- Stamp Club
- Victim's Assistance
- Willow Valley Trophy Club

- Windy Slopes Health Foundation

For more information on other organizations contact the Pincher Creek & District Chamber of Economic Development at 403-627-5199/627-5855 or e-mail pcinfo@telusplanet.net

Religious Services

- Anglican Church of Canada
- Church of God in Christ
- Church of Jesus Christ of Latter Day Saints
- First Baptist Church
- Foothills Community Church
- Heartland Christian Community Church
- Jehovah's Witnesses Kingdom Hall
- Pentecostal Assembly
- Springridge Mennonite Church
- St.Michael's Catholic Church
- Trinity Lutheran Church
- United Church of Canada

Special Events

March

Men's Retreat
C.S.I.A Level 1
Race- Junior Giant Slalom
Race- King of the Castle
Race- Nancy Greene
C.S.I.A Level 2
Pavlo (Mediterranean Music)
Springfest
Race-Tom Tatrjn Memorial
Monday Night at the Movies

April

Iron Legs
Monday Night at the Movies

May

Monday Night at the Movies

June

Monday Night at the Movies

June

Monday Night at the Movies

June

Iris Festival
Iris Festival
Iris Festival
Iris Festival
Iris Festival
Iris Festival
Cowboy Poetry Gathering
Chuck Wagon Cook Out -Heritage Acres
Market Fair

July

Kootenai Brown Pioneer Village Canada Day Celebrations
6th Annual Garden Tour
Kite Festival
Market Fair
Kootenai Brown Pioneer Village Annual Tea
Heritage Days-Heritage Acres

August

Taste of the High Country Farm Festival
Huckleberry Festival- -Castle Mountain
Pincher Creek Fair & Rodeo
Market Fair

September

Cattle Drive-Sierra West
Ranch Roping-Sierra West
Harvest Festival
Market Fair

October

Town & Country Business Awards

November

Parade of Lights
Moonlight Madness
Christmas Craft Market

December

Country Christmas- Heritage Acres

For more information on any of our events please contact us at Pincher Creek & District Chamber of Economic Development
Box 2287
Pincher Creek, Alberta
T0K 1W0
Telephone: 403-627-5199 or 403-627-5855

Email: pcinfo@telusplanet.net
Website: www.pincher-creek.com
Fax: 403-627-5850

Accommodation

BLUE MOUNTAIN MOTEL 627-5335
13 rooms (some with kitchenettes) non-smoking available

CASTLE MOUNTAIN SKI LODGE & HOSTEL 627-5121
11 Hotel rooms / 9 Hostel rooms with 6 to 8 beds in each room.

FOOTHILLS MOTEL Toll free 1-888-627-3340
30 rooms (10 with kitchenettes) whirlpool - sauna non-smoking available - courtesy coffee

HERITAGE INN Toll free 1-888-888-4374
42 rooms - 2 executive - 1 bridal suite - 2 banquet rooms - 1 small meeting room - restaurant - bar - lounge - gambling

PARKWAY MOTEL Toll free 1-888-209-9902
41 rooms (10 non-smoking) (18 with kitchenettes) courtesy coffee - exercise room and sauna

STARDUST MOTEL & MOTOR HOMES COURT Toll free 1-800-268-5022
14 rooms - 4 R.V.'s spaces non-smoking rooms - kitchen suite - winter plug INS

SUPER 8 MOTEL Toll free 1-800-800-8000
39 rooms (non-smoking available) meeting room
continental breakfast - handicap accessible - adjacent to restaurant

WEST CASTLE INN 627-2880
17 rooms (7 with kitchenettes) - some non-smoking

Bed & Breakfasts:

Angler's Ridge B&B 564-4898
Angler's Ridge B&B 564-4898
Angler's Ridge B&B 564-4898
Aspen Grove 627-2928
Beau-K 627-2234
Bedside Manor (W Bar Lazy Ranch) 628-3954 or 562-8804
Aspen Grove 627-2928
Beau-K 627-2234
Bedside Manor (W Bar Lazy Ranch) 628-3954 or 562-8804
Aspen Grove 627-2928
Beau-K 627-2234
Bedside Manor (W Bar Lazy Ranch) 628-3954 or 562-8804
Aspen Grove 627-2928
Beau-K 627-2234
Bedside Manor (W Bar Lazy Ranch) 628-3954 or 562-8804
Aspen Grove 627-2928
Beau-K 627-2234
Bedside Manor (W Bar Lazy Ranch) 628-3954 or 562-8804
Aspen Grove 627-2928
Beau-K 627-2234

Bedside Manor (W Bar Lazy Ranch) 628-3954 or 562-8804

Bloomin' Inn 627-5829

Burmis Bed & Bales 1-800-345-2841

Chipman Creek Studio 1-877-627-5424

Livingstone Lake Ranch B&B 403-564-5180

Red Rooster Cottage 403-627-2827

Shintangle Spring 1-877-627-5767

Skyline 627-5074 or 627-7895

Stepping Stone Cabins 627-5128

Tacarsey Cabin 627-5231

Tapay Ranch 628-2024 or 627-6412

Valley Blue Ranch 627-2382

Holiday Homes:

Saint Joseph's Inn 628-3027

Sierra West Cabins 628-2431

Rustic Accommodations:

Foothills Creek Hide-A-Way 627-2207

Rustic Tipi Camp B&B 627-1935

Restaurants

- Hwy.3 & 6 Husky
- Antonio's Pizza
- A & W (Fast Food)
- Bloomin Onion Grill
- Bright Pearl Restaurant (Chinese-Western)
- Daily Grind Café (Light Lunches)
- Denise's Bistro (Lunch Specials Daily)
- Ginger Garden -Chinese - Western
- Heritage Inn Season's Café
- Kentucky Fried Chicken
- King's (Pizza - Chinese - Western)
- Luigi's Pizza and Steakhouse (Western - Italian)
- Memories Tea Room
- Mrs. P's Coffee Corner
- Nevada Grill (Mexican)
- Peking Palace
- Savory Suite Café
- Simply Catering (located at the Golf Course)
- Stella's Grill & Pub
- Subway Restaurant
- Swiss Alpine (European)
- Windward Pizza

Shopping:

Downtown

- 7 - 11 Convenience Store
- Blackburn Jewelers
- Boytincks Department Store
- Cornyns Drugstore (souvenirs)
- Higa's/Rexall Drugstore (souvenirs)
- High Country Western Wear
- Home Hardware
- Kootenai Brown Pioneer Village Gifts (souvenirs)
- Kost Fire Equipment
- Main Street Flowers
- Movie Gallery
- Outdoor Outlet
- Pincher Creek Co-op Farm & Home Center
- Pincher Creek Echo
- Pincher Creek Sobeys
- Pincher Office Products
- Radio Shack
- Ruffles Boutique
- Tiny Tots
- Town & Country Liquor Store
- Walking Ducks
- Wildrose Video

Pincher Creek Co-op Mall

- C & D Floral
- Carries Ladies Wear
- Case & Keg Liquor Store
- Chocolates & Treasures
- Coldwell Banker
- Co-op Grocery
- Co-operators Insurance
- Cougar Ridge Computers
- Curves Fitness
- Fields Department Store
- Great Canadian Dollar Store
- L & P Casuals (souvenirs)
- License & Registry
- Mrs. P's Café



Economic Facts

Major industrial facilities include an industrial park located on the east side of Town. It is zoned light and heavy industrial and the size of a lot is 2 acres. Park services include water, power, sewer and garbage pick up.

Major business sectors: Refinery, Food Centres, Lumber Yards, Department Stores, Hotels, Restaurants, Bars, Lounges, Pipeline construction, medical and schools.

Major Businesses Products/Services

Shell Canada Gas Plant

Financial Institutions

- Alberta Treasury Branch (ATM available)
- Canadian Imperial Bank of Commerce [ATM available]
- Pincher Creek Credit Union [ATM available]
- Royal Bank of Canada [ATM available]

Education

Pincher Creek is located in the Livingstone Range School Division # 68, headquartered in Pincher Creek Telephone: 403-627-3044, and the Holy Spirit Roman Catholic School Regional Division, headquartered in Lethbridge Telephone: 403-327-9555

Early Childhood Education

Better Beginings Programs

Brighter Futures

Charlie Brown Nursery School

Children's World Day Care and Day Homes

Napi Daycare Center

Rainbow Nursery School

Public

Public schools in Pincher Creek include
Canyon School (Gr. K - 6)

Chinook Educational Consortium (Adult Education)
Livingstone School - Lundbreck (Gr. K - 12)
Matthew Halton Community School (Gr. 7 - 12)
Napi's Playground - Brocket (Elementary)
PAL Project (Read/Write)
Piikani Nation - Brocket (Secondary)
Rocky View Christian School (Gr. K - 9)
St.Michael's Roman Catholic School (Gr. K - 12)
University correspondence courses are available across the Province



Emergency Services

Fire Protection

Consists of a 30-member volunteer fire department: 1 full-time Fire Chief; 2 Fire Trucks; 1 Rescue Van and 1 Bush Buggy. [Telephone: 403-627-3700].

Police Services

There is a local R.C.M.P. detachment [Telephone: 403-627-4424]; 1 By-Law Officer, 1 special constable C.O.P.S. and a Rural Crime Watch.

Ambulance Services

Services include: 1 Rescue Van; 3 Ambulances; Air Ambulance and 3 paramedics. [Telephone: 403-627-3700].

Health Care

Pincher Creek Municipal Hospital 627-1234

Services

- 16 Acute care beds

- 2 Emergency Operating Theatres
- 2 General Practitioner Surgeons
- 2 Visiting General Surgeons
- 3 Anesthesiologist
- 3 Long term beds
- 4 Emergency Care Beds
- 8 General Practitioners
- Cardiac Stress Test
- Endoscopy
- Intensive Care Unit
- Maternal Child Care
- Pediatrics
- Volunteer Ambulance and Air Ambulance
- Volunteer Fire Department
- Volunteer Search & Rescue
- X-Ray and Lab Services
- 1 Dietician (part time)
- 1 Occupational Therapist
- 1 Palliative Care Nurse
- 1 Pharmacist
- 1 Physiotherapist
- 1 Respiratory Therapist (part time)
- 1 Social Worker
- 1 Speech Therapist

Associate Medical Clinic 627-3321

Other Medical Services

- 1 Naturopathic practitioner
- 1 Optometrists
- 2 Dentists
- 2 Chiropractors
- 1 Podiatrist
- Psychologists
- 2 Pharmacists
- Physiotherapist/Acupuncture
- Therapists (reflexology, massage etc.)

Key Contacts for Business Development

Municipal

Town of Pincher Creek
Box 159

Pincher Creek, Alberta
T0K 1W0
Telephone: 403-627-3156
Fax: 403-627-4784
Email: pctown@telusplanet.net
Donald Anderberg
Mayor

Fran Korfeld
Chief Administrative Officer
franpc@telus.net

Municipal District of Pincher Creek
Box 279
Pincher Creek, Alberta
T0K 1W0
Telephone: 403-627-3130
Email: mdpinch@telusplanet.net Website: www.mdpinchercreek.com
Fax: 403-627-5070

Pincher Creek & District Chamber of Economic Development
Box 2287
Pincher Creek, Alberta
T0K 1W0
Telephone: 403-627-5199 or 403-627-5855
Email: pcinfo@telusplanet.net
Website: www.pincher-creek.com
Fax: 403-627-5850

Provincial

Bev Thornton
Regional Manager
Alberta Economic Development
Provincial Building
E-mail: Bev.Thornton@gov.ab.ca

David Coutts
Member of Legislative Assembly [MLA]
Livingstone-Macleod Constituency

Constituency Office
P.O. Box 69
2115 - 2nd Avenue
Fort Macleod, AB
T0L 0Z0
Phone: (403) 553-2400
Toll Free: 1-800-565-0962
Fax: (403) 553-2133
livingstone.macleod@assembly.ab.ca

Legislature Office
#420 Legislature Building
10800 - 97 Avenue

Edmonton, AB
T5K 2B6
Phone: (780) 415-4815
Fax: (780) 415-4818

Chuck Lee
Manager
Southwest Alberta Business Development Institute
659 Main Street, Box 1568
Pincher Creek, Alberta
T0K 1W0
Telephone: 403-627-3020
Fax: 403-627-3035
E-mail: swabdc@telusplanet.net

Federal

Ted Menzies
Member of Parliament [MP]
MacLeod Electoral District
Parliamentary Address

House of Commons
Ottawa, Ontario
K1A 0A6
Telephone: (613) 995-8471
Fax: (613) 996-9770
E-Mail: Menzies.T@parl.gc.ca

Constituency Address
4925 1st Street West, P.O. Box 40
Claresholm, Alberta
T0L 0T0
Telephone: (403) 625-5532 1-866-636-9437
Fax: (403) 625-5592
TTY:
E-Mail: menziest@telus.net

Location

The town of Pincher Creek and the Municipal District of Pincher Creek #9 are 211 km south of Calgary; 103 km west of Lethbridge; 221 km east of Cranbrook, BC; and 369 km north of Great Falls, Montana.

The Crowsnest Highway #3 is the main highway running east and west. Nearby highways running north and south are #6, #22 and #2.

Agriculture is the foundation of Pincher Creek's economy. Cash crops of all kinds grow well in the area. The beef industry includes several large feedlots and well known pure bred operations. Agricultural possibilities include dairy, swine, poultry, sheep, honey, llamas, buffalo and more. Most of the 500 agricultural operations in the area are mixed farming.

Natural resources are oil, natural gas and forestry.

Shell Canada's Waterton Complex is the major industry.



Post Secondary Education

Athabasca University Correspondence courses are available across the Province. Lethbridge Community College and the University of Lethbridge are 100 kilometres East of Pincher Creek, and offer courses in Pincher Creek through the Chinook Educational Consortium.

Taxation

1. Residential (includes education property tax) 0187837
 2. Non-Residential (includes education property tax) 0231587
- No separate business taxes.
 No off site development levies.
 No local improvement levies. (Frontage levy)
 Business License Fee - \$125.00 per year

	<u>Residential/Farmland</u>	<u>Non-Residential</u>
2005		
Municipal Tax Rate	13.4617	15.7628
Education - Alberta School Foundation Fund Tax Rate	4.7372	6.7396
Education Opted Out Tax Rate	4.7372	6.7396
Seniors Lodge Accommodation Tax Rate	.1712	.1712

Transportation

Air Service

The Pincher Creek Airport can accommodate most types of aircraft. The nearest commercial and air freight service is at Lethbridge Airport, 103 km east of Pincher Creek.

Rail Service

Pincher Creek is served by Canadian Pacific Railways. Highways Connecting highways include #3 east & west, #6 north & south,

#22 north & south, and #2 north.

Trucking Firms

- Mike's Transport
- Bill Davis Trucking
- Byers Transport
- Crow Trucking
- Damberger Trucking
- Glen Trucking
- Sorge Trucking

Bus Services

Greyhound Bus Lines provide regularly scheduled inter-community service. Charters are also available.

Couriers and Taxis

Local and major companies, Truck and Car Rental

Utilities

Electrical Power

Epcor

10065 Jasper Ave.

Edmonton, Alberta T5J 3B1

Telephone: 403-310-4300

Natural Gas

Alta Gas Utilities

1347 Hunter Street

Pincher Creek, Alberta

Telephone: 403-627-2189

Summerview Gas Co-op Ltd.

Pincher Creek, Alberta

Telephone: 403-627-2189

Telephone

Telus

808 - 4th Avenue South

Lethbridge, Alberta T1J 0P2

Telephone: 403-310-2255

Water Supply

Pincher Creek's main source of water is the Castle River. The reservoir capacity is 1,200,000 gallons. The design capacity is for 2,600,000 gallons per day. The pumping capacity is 166 litres per second and the average line pressure is 80 PSI. The average daily consumption is 2,000 cubic meters.

The minimum charge for the first 40 cubic metres is a bi-monthly payment of \$51.89 metered residential users after which the rates vary depending on the volume. Commercial users with metric meters pay a minimum charge for the first 18 cubic metres also with a

bi-monthly payment of \$51.89 after which the rates vary depending on the volume.

Waste Management

There is weekly garbage collection, recycling of paper, plastic, cans and bottles. A sanitary landfill and solid waste disposal is available, and also a composting site for yard waste.

Sewer service charges for residential consumers is \$15.96 bi-monthly per residence. For commercial consumers it is 10% of the cost of water consumed, plus \$4.53 per month.

Garbage collection for residences is \$30.32 bi-monthly. Commercial, industrial and institutional rates vary depending on the frequency of the pickup service. Recycling fees are basic charges of \$4.00 bi-monthly.

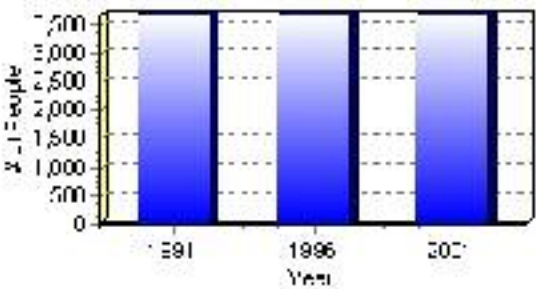
Population

Total Population

Population 2004*	3,666
Population 2003*	3,666
Population 2002*	3,666
Population 2001**	3,665
Population 2000*	3,659
Population 1996**	3,659
Population 1991**	3,660
Population % change 1991-1996	-0.03%
Population % change 1996-2001	0.19%

* Source: Official Population List, Alberta Municipal Affairs
** Source: Statistics Canada 1991, 1996, & 2001 Census

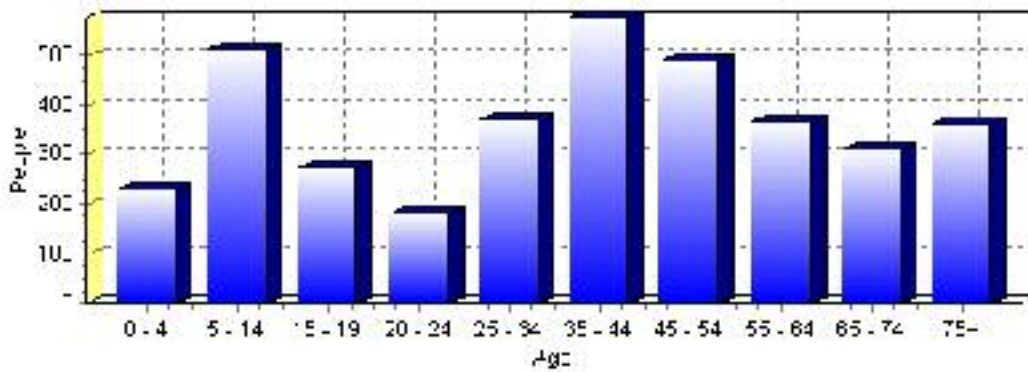
Total Population 1991-2001



Population by Age and Gender	1996 Male	1996 Female	1996 Total	2001 Male	2001 Female	2001 Total
Age 0 - 4	135	130	265	120	110	230
Age 5 - 14	265	270	535	240	270	510
Age 15 - 19	135	145	280	130	145	275
Age 20 - 24	105	105	210	90	90	180
Age 25 - 34	210	215	425	175	195	370
Age 35 - 44	300	315	615	280	295	575
Age 45 - 54	210	220	430	245	240	485
Age 55 - 64	140	145	285	170	195	365
Age 65 - 74	150	160	310	145	165	310
Age 75 and older	125	185	310	155	205	360
Total All Persons	1,775	1,880	3,655	1,760	1,905	3,665

Source: Statistics Canada 1996 & 2001 Census (numbers may not add up due to rounding)

Pincher Creek Population by Age Group (2001)

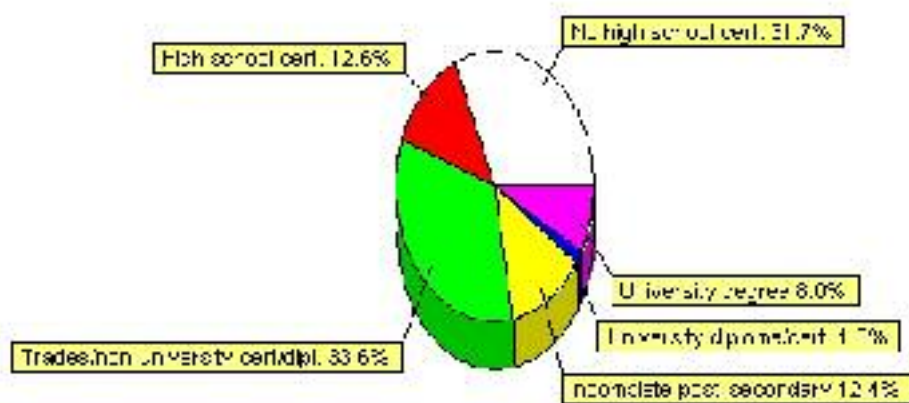


Education Statistics

Highest level of schooling for Population 20yrs and older	2001	%
People without high school certificates	815	31.65%
People with high school certificates	325	12.62%
People with trades or non-university certificate or diploma	865	33.59%
People with post-secondary education (not completed)	320	12.43%
People with university diploma/certificate	40	1.55%
People with university degree	205	7.96%
Total Population 20 years and older	2,575	100.00%

Source: Statistics Canada 2001 Census (numbers may not add up due to rounding)

Pincher Creek Highest Level of Schooling 2001



Population with Post Secondary Qualifications	1996	%	2001	%
Agriculture and biological sciences	40	3.23%	70	6.33%
Commerce, management and business administration	255	20.56%	170	15.38%
Educational, recreational and counseling services	160	12.90%	135	12.22%
Engineering and applied science tech. and trades	465	37.50%	385	34.84%
Engineering and applied sciences	25	2.02%	0	0.00%
Fine and applied arts	75	6.05%	35	3.17%
Health professionals, science and technologies	120	9.68%	205	18.55%
Humanities and related fields	25	2.02%	25	2.26%
Mathematics and physical sciences	10	0.81%	25	2.26%
Social sciences and related fields	65	5.24%	50	4.52%
Other and/or no specialization	0	0.00%	10	0.90%
Total people with post secondary qualifications	1,240	100.00%	1,105	100.00%
Females with post-secondary qualifications	630	50.81%	535	48.42%
Males with post-secondary qualifications	610	49.19%	570	51.58%

Source: Statistics Canada 1996 & 2001 Census (numbers may not add up due to rounding)

Labour Force

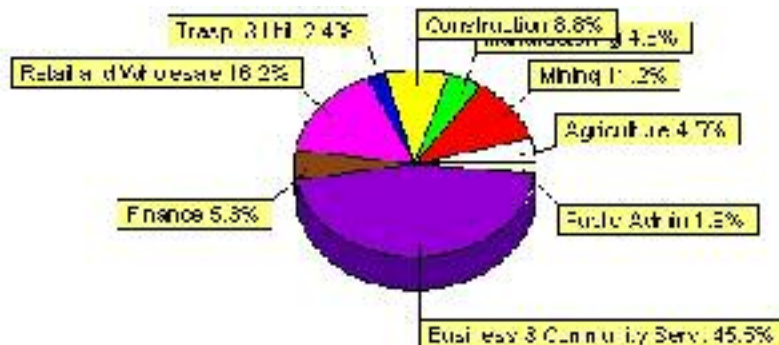
Labour force by activity	1996	2001
In the labour force, both sexes	1,875	1,890
Not in the labour force, both sexes	910	960
Total population 15 and over	2,790	2,845
Employed, both sexes	1,740	1,800
Unemployed, both sexes	135	85
Participation rate, both sexes	67.00%	66.00%
Unemployment rate, both sexes	7.00%	5.00%

Source: Statistics Canada 1996 & 2001 Census (numbers may not add up due to rounding)

Labour Force by Industry Division	1996	% of total	2001	% of total
Agriculture	65	3.49%	85	4.52%
Mining	130	6.99%	210	11.17%
Manufacturing	90	4.84%	90	4.79%
Construction	165	8.87%	165	8.78%
Transportation. & Utilities	115	6.18%	45	2.39%
Retail and Wholesale	410	22.04%	305	16.22%
Finance	60	3.23%	100	5.32%
Business & Community Services	680	36.56%	855	45.48%
Public Administration	135	7.26%	35	1.86%
Total All Industries	1,860	100.00%	1,880	100.00%

Source: Statistics Canada 1996 & 2001 Census (numbers may not add up due to rounding)

Pincher Creek Labour Force By Industry - 2001



Labour Force by Major Occupational Groups	1996	%	2001	%
Management occupations	160	8.63%	160	8.51%
Business, Finances and administrative occupations	260	14.02%	290	15.43%
Natural and applied sciences and related occupations	70	3.77%	30	1.60%
Health occupations	85	4.58%	135	7.18%
Occupations in social science; education; government and religion	115	6.20%	135	7.18%
Occupations in art; culture; recreation and sport	25	1.35%	20	1.06%

Sales and service occupations	530	28.57%	545	28.99%
Trades; transport; equipment operators and related occupations	355	19.14%	345	18.35%
Occupations unique to primary industry	155	8.36%	105	5.59%
Occupations unique to processing; manufacturing and utilities	90	4.85%	110	5.85%
Occupations not elsewhere classified	20	1.08%	10	0.53%
Total - All Occupations (major groups)	1,855	100.00%	1,880	100.00%
Females - All Occupations	885	47.71%	895	47.61%
Males - All Occupations	970	52.29%	980	52.13%

Source: Statistics Canada 1996 & 2001 Census (numbers may not add up due to rounding)

Income

Family Income (Number of Families)	1996	%	2001	%
less than \$19,999	65	7.03%	95	11.31%
\$20,000 - \$39,999	280	30.27%	310	36.90%
\$40,000 - \$59,999	250	27.03%	240	28.57%
\$60,000 and over	330	35.68%	265	31.55%
Total number of families	925	100.00%	910	108.33%
Average family income	\$52,840		\$57,212	
Median family income	\$50,346		\$49,733	

Source: Statistics Canada 1996 & 2001 Census (numbers may not add up due to rounding)

Household Income (Number of Households)	1996	%	2001	%
less than \$19,999	310	22.38%	310	21.31%
\$20,000 - \$39,999	420	30.32%	385	26.46%
\$40,000 - \$59,999	270	19.49%	295	20.27%
\$60,000 and over	135	9.75%	460	31.62%
Total number of households	1,385	100.00%	1,455	100.00%
Average household income	\$44,953		\$49,810	
Median household income	\$36,702		\$41,822	

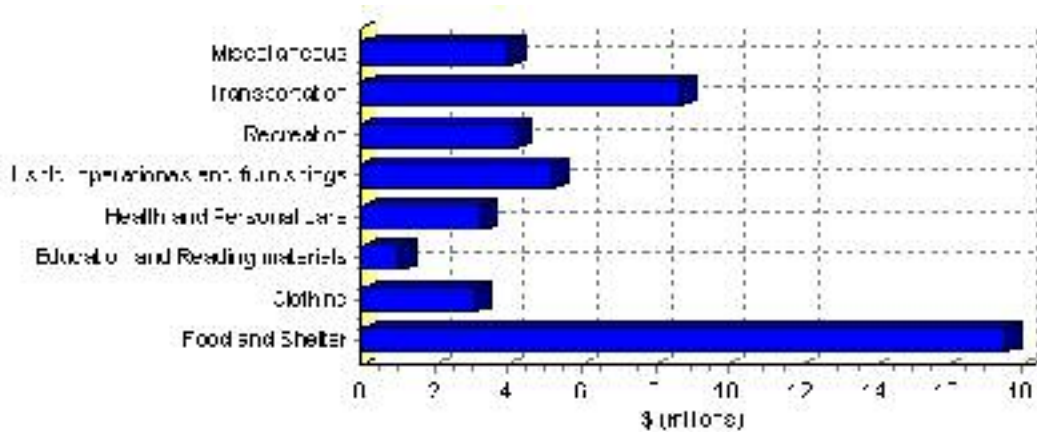
Source: Statistics Canada 1996 & 2001 Census (numbers may not add up due to rounding)

Family Expenditure

Expenditure Category	1992	% of total	1996	% of total
Food and Shelter	\$16,096,555	36.70%	\$17,561,074	37.30%
Clothing	\$3,083,040	7.03%	\$3,088,141	6.56%
Education and Reading materials	\$983,000	2.24%	\$1,017,969	2.16%
Health and Personal care	\$2,715,845	6.19%	\$3,268,471	6.94%
Hshld. operations and furnishings	\$4,842,170	11.04%	\$5,211,832	11.07%
Recreation	\$3,715,810	8.47%	\$4,173,200	8.86%
Transportation	\$8,981,150	20.48%	\$8,703,891	18.48%
Miscellaneous	\$3,434,790	7.83%	\$4,062,323	8.63%
Total Current Consumption	\$43,861,970	100.00%	\$47,086,901	100.00%
Total # of Households	1,375		1,387	
Average Consumption per Household	\$31,900		\$33,949	

Source: Statistics Canada Family Expenditure Survey 1992 & 1996 (numbers may not add up due to rounding).

Pincher Creek Family Expenditures (1996)

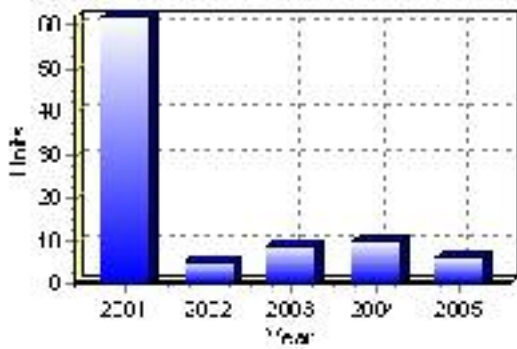


Building Permits

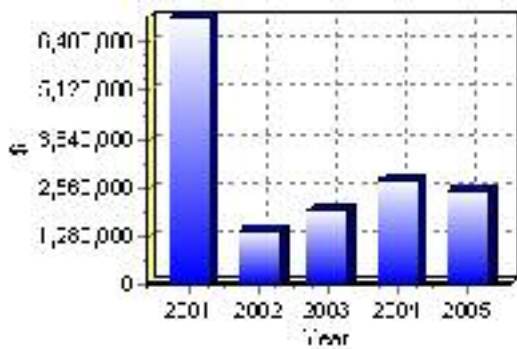
Total Building Permit Values	2001	2002	2003	2004	2005
Building Permits Value, Commercial	\$477,000	\$267,000	\$319,000	\$1,230,000	\$89,000
Building Permits Value, Industrial	\$158,000	\$530,000	\$25,000	\$106,000	\$0
Building Permits Value, Institutional	\$2,784,000	\$0	\$409,000	\$0	\$1,223,000
Building Permits Value, Residential	\$3,628,000	\$652,000	\$1,187,000	\$1,410,000	\$1,165,000
Building Permits Value, Total	\$7,047,000	\$1,449,000	\$1,940,000	\$2,746,000	\$2,477,000
Total Housing Starts	62	5	9	10	6

Source: Statistics Canada 2000-2004 Building Permits (numbers may not add up due to rounding)

Total Housing Starts



Value of Building Permits



Dwellings

Occupied Private Dwellings by Type	1996	% of total	2001	% of total
Apartments	55	3.97%	50	3.44%
Detached Duplexes	15	1.08%	10	0.69%
Movable Dwellings	150	10.83%	5	0.34%
Other single attached house	10	0.72%	5	0.34%
Row and semi-detached house	105	7.58%	120	8.25%
Single-detached house	1,055	76.17%	1,275	87.63%
Total number of occupied private dwellings	1,385	100.00%	1,455	100.00%
Private dwellings, owned	1,075	77.62%	1,140	78.35%
Private Dwellings, rented	315	22.74%	315	21.65%

Source: Statistics Canada 1996 & 2001 Census (numbers may not add up due to rounding)

Private Dwellings by Period of Construction	# of Dwellings	% of total
Period of construction, before 1946	250	17.18%
Period of construction, 1946 - 1960	200	13.75%
Period of construction, 1961 - 1970	340	23.37%
Period of construction, 1971 - 1980	405	27.84%
Period of construction, 1981 - 1990	150	10.31%
Period of construction, 1991 - 2001	110	7.56%
Total number of private dwellings constructed	1,455	100.00%

Source: Statistics Canada 2001 Census (numbers may not add up due to rounding)

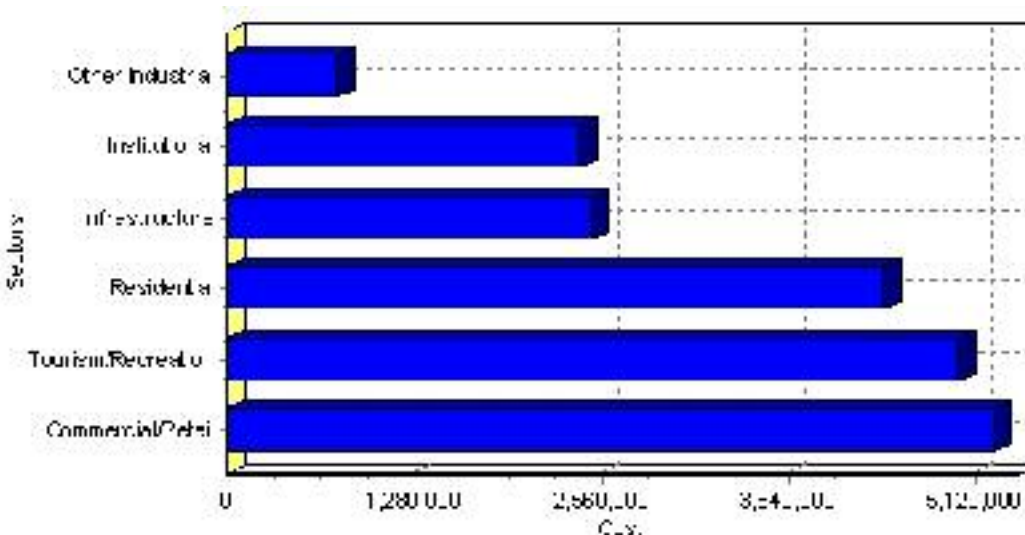
Projects

Summary of Projects in Pincher Creek as of September 2006

Project Sector	Number of Projects	Project Cost
Commercial/Retail	7	\$5,251,000
Tourism/Recreation	1	\$5,000,000
Residential	1	\$4,500,000
Infrastructure	1	\$2,500,000
Institutional	3	\$2,410,000
Other Industrial	2	\$760,000
Total	15	\$20,421,000

This inventory lists projects in Alberta that have recently been completed, are under construction, or are proposed to start construction. Not all projects are listed due to reasons of confidentiality and/or due to information not being available at the time of printing. Project data is obtained from public information sources, where possible, this data has been verified with the project proponent/developer, users of the Inventory may wish to confirm project data with the proponent/developer. The inventory does not breakdown project expenditures by any given year. The cost of a project is the value of expenditures expected over all phases of project construction, which may span over two or more years. Cost of projects listed in the Inventory are estimated values only. Source: Alberta Economic Development, 2004.

Value of Projects by Sector (as of September 2006)



Project Status	Number of Projects	Project Cost
Completed	5	\$1,794,000
Nearing Completion	1	\$2,800,000
Proposed	2	\$7,000,000
Under Construction	7	\$8,827,000
Total	15	\$20,421,000

This inventory lists projects in Alberta that have recently been completed, are under construction, or are proposed to start construction. Not all projects are listed due to reasons of confidentiality and/or due to information not being available at the time of printing. Project data is obtained from public information sources, where possible, this data has been verified with the project proponent/developer, users of the Inventory may wish to confirm project data with the proponent/developer. The inventory does not breakdown project expenditures by any given year. The cost of a project is the value of expenditures expected over all phases of project construction, which may span over two or more years. Cost of projects listed in the Inventory are estimated values only. Source: Alberta Economic Development, 2004.

Largest Projects in Pincher Creek as of September 2006

Company Name	Project Description	Project Location	Project Cost	Construction Schedule	Status
CanAlta Real Estate Services	Ramada Inn Hotel	Pincher Creek	\$5,000,000	2006-2007	Under Construction
Good Samaritan Society	'Pincher Creek Vista Village' Assisted Living Facility Addition (affordable hous	Pincher Creek	\$4,500,000	-	Proposed
Pincher Creek Co-op	Store Renovation / Modernization	Pincher Creek	\$2,800,000	2006-2006	Nearing Completion
Town of Pincher Creek	New RCMP Detachment Building (Administration office adndetention cells)	Pincher Creek	\$2,500,000	-	Proposed
Pincher Creek Hospital	Renovation	Pincher Creek	\$1,900,000	2006-2006	Under Construction
Super 8 Motel	BUILDING ADDITION	Pincher Creek	\$875,000	2006-2007	Under Construction
Damberger Trucking	New Shop	Pincher Creek	\$500,000	2006-2006	Completed
Voker Stevin Contracting	Shop & Office	Pincher Creek	\$432,000	2006-2006	Under Construction
Westcastle Motors	Renovations	Pincher Creek	\$400,000	2006-2006	Completed
Lebel Mansion Historical Bldg.	Addition & Renovation	Pincher Creek	\$345,000	2006-2006	Completed

Disclaimer: Information in this profile has been provided from a variety of external sources. Although every effort has been made to ensure the accuracy, currency and reliability of the content and data, AlbertaFirst.com Ltd. accepts no responsibility in this regard.

© AlbertaFirst.com Ltd., 2006.