

Milk River

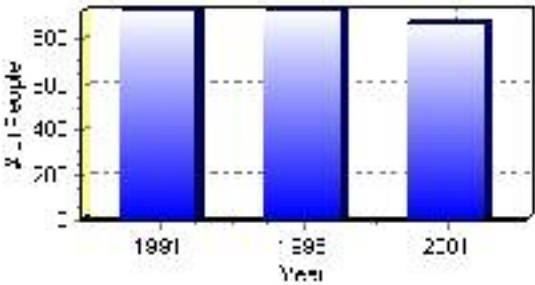
Population

Total Population

Population 2004*	879
Population 2003*	879
Population 2002*	879
Population 2001**	880
Population 2000*	929
Population 1996**	929
Population 1991**	926
Population % change 1991-1996	0.32%
Population % change 1996-2001	-5.69%

* Source: Official Population List, Alberta Municipal Affairs
** Source: Statistics Canada 1991, 1996, & 2001 Census

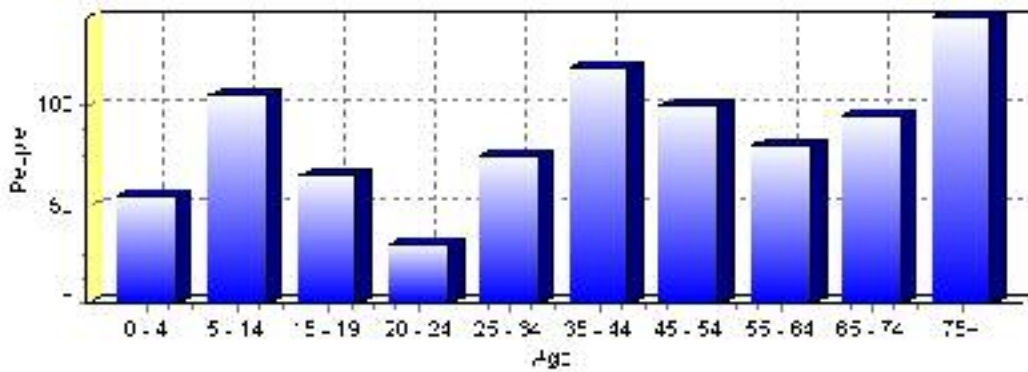
Total Population 1991-2001



Population by Age and Gender	1996 Male	1996 Female	1996 Total	2001 Male	2001 Female	2001 Total
Age 0 - 4	35	30	65	25	30	55
Age 5 - 14	80	65	145	60	45	105
Age 15 - 19	20	20	40	35	30	65
Age 20 - 24	20	20	40	15	15	30
Age 25 - 34	55	60	115	40	35	75
Age 35 - 44	60	60	120	55	65	120
Age 45 - 54	40	35	75	45	55	100
Age 55 - 64	40	40	80	45	35	80
Age 65 - 74	40	55	95	50	45	95
Age 75 and older	65	80	145	55	90	145
Total All Persons	465	465	930	430	450	880

Source: Statistics Canada 1996 & 2001 Census (numbers may not add up due to rounding)

Milk River Population by Age Group (2001)

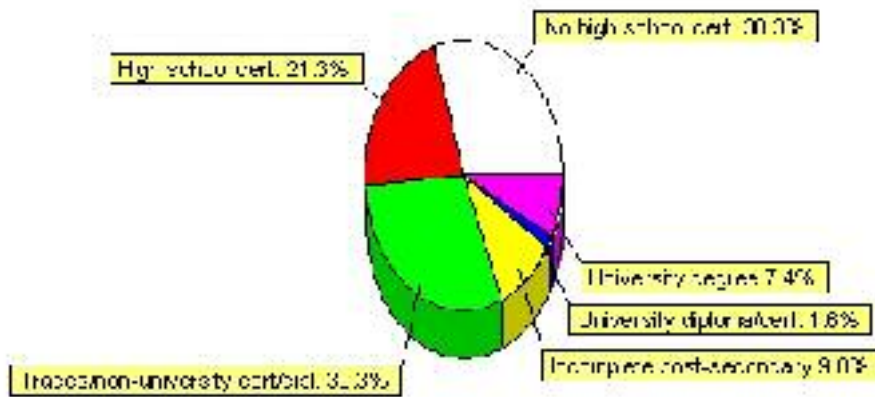


Education Statistics

Highest level of schooling for Population 20yrs and older	2001	%
People without high school certificates	185	30.33%
People with high school certificates	130	21.31%
People with trades or non-university certificate or diploma	185	30.33%
People with post-secondary education (not completed)	60	9.84%
People with university diploma/certificate	10	1.64%
People with university degree	45	7.38%
Total Population 20 years and older	610	100.00%

Source: Statistics Canada 2001 Census (numbers may not add up due to rounding)

Milk River Highest Level of Schooling 2001



Population with Post Secondary Qualifications	1996	%	2001	%
Agriculture and biological sciences	20	8.33%	20	8.33%
Commerce, management and business administration	50	20.83%	60	25.00%
Educational, recreational and counseling services	20	8.33%	10	4.17%
Engineering and applied science tech. and trades	60	25.00%	65	27.08%
Engineering and applied sciences	0	0.00%	10	4.17%
Fine and applied arts	25	10.42%	0	0.00%
Health professionals, science and technologies	20	8.33%	35	14.58%
Humanities and related fields	10	4.17%	15	6.25%
Mathematics and physical sciences	0	0.00%	0	0.00%
Social sciences and related fields	10	4.17%	15	6.25%
Other and/or no specialization	0	0.00%	0	0.00%
Total people with post secondary qualifications	240	100.00%	240	100.00%
Females with post-secondary qualifications	120	50.00%	140	58.33%
Males with post-secondary qualifications	120	50.00%	100	41.67%

Source: Statistics Canada 1996 & 2001 Census (numbers may not add up due to rounding)

Labour Force

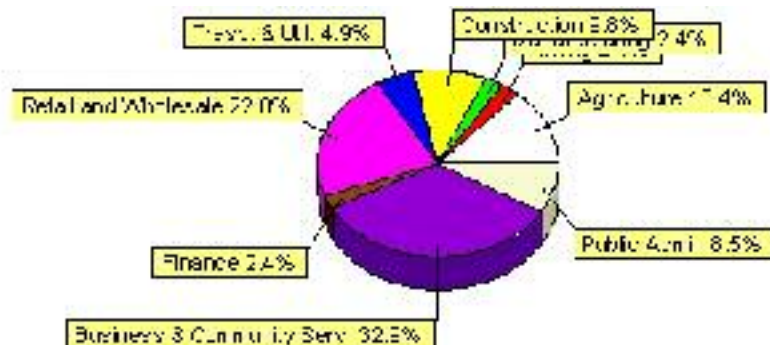
Labour force by activity	1996	2001
In the labour force, both sexes	415	405
Not in the labour force, both sexes	265	260
Total population 15 and over	680	665
Employed, both sexes	405	405
Unemployed, both sexes	10	0
Participation rate, both sexes	61.00%	61.00%
Unemployment rate, both sexes	2.00%	0.00%

Source: Statistics Canada 1996 & 2001 Census (numbers may not add up due to rounding)

Labour Force by Industry Division	1996	% of total	2001	% of total
Agriculture	80	19.28%	55	13.41%
Mining	0	0.00%	10	2.44%
Manufacturing	0	0.00%	10	2.44%
Construction	30	7.23%	40	9.76%
Transportation. & Utilities	45	10.84%	20	4.88%
Retail and Wholesale	70	16.87%	90	21.95%
Finance	0	0.00%	10	2.44%
Business & Community Services	125	30.12%	135	32.93%
Public Administration	15	3.61%	35	8.54%
Total All Industries	415	100.00%	410	100.00%

Source: Statistics Canada 1996 & 2001 Census (numbers may not add up due to rounding)

Milk River Labour Force By Industry - 2001



Labour Force by Major Occupational Groups	1996	%	2001	%
Management occupations	30	7.32%	40	9.76%
Business, Finances and administrative occupations	85	20.73%	95	23.17%
Natural and applied sciences and related occupations	0	0.00%	0	0.00%
Health occupations	30	7.32%	35	8.54%
Occupations in social science; education; government and religion	25	6.10%	20	4.88%
Occupations in art; culture; recreation and sport	10	2.44%	0	0.00%

Sales and service occupations	90	21.95%	75	18.29%
Trades; transport; equipment operators and related occupations	80	19.51%	65	15.85%
Occupations unique to primary industry	55	13.41%	75	18.29%
Occupations unique to processing; manufacturing and utilities	10	2.44%	0	0.00%
Occupations not elsewhere classified	0	0.00%	0	0.00%
Total - All Occupations (major groups)	410	100.00%	410	100.00%
Females - All Occupations	200	48.78%	175	42.68%
Males - All Occupations	210	51.22%	230	56.10%

Source: Statistics Canada 1996 & 2001 Census (numbers may not add up due to rounding)

Income

Family Income (Number of Families)	1996	%	2001	%
less than \$19,999	0	0.00%	20	9.76%
\$20,000 - \$39,999	55	27.50%	70	34.15%
\$40,000 - \$59,999	90	45.00%	70	34.15%
\$60,000 and over	55	27.50%	65	31.71%
Total number of families	200	100.00%	225	109.76%
Average family income	\$64,104		\$63,334	
Median family income	\$47,433		\$47,130	

Source: Statistics Canada 1996 & 2001 Census (numbers may not add up due to rounding)

Household Income (Number of Households)	1996	%	2001	%
less than \$19,999	85	22.37%	60	16.90%
\$20,000 - \$39,999	115	30.26%	115	32.39%
\$40,000 - \$59,999	120	31.58%	75	21.13%
\$60,000 and over	10	2.63%	110	30.99%
Total number of households	380	100.00%	355	100.00%
Average household income	\$46,746		\$53,064	
Median household income	\$38,705		\$38,396	

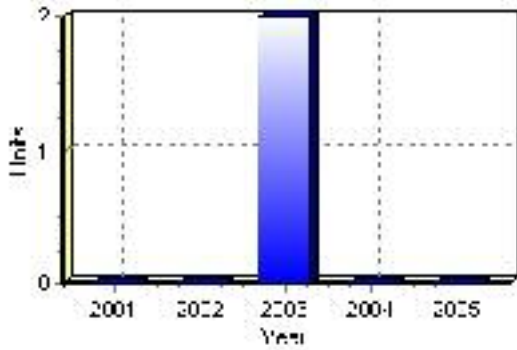
Source: Statistics Canada 1996 & 2001 Census (numbers may not add up due to rounding)

Building Permits

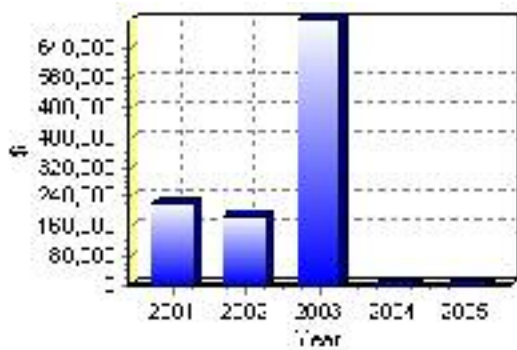
Total Building Permit Values	2001	2002	2003	2004	2005
Building Permits Value, Commercial	\$20,000	\$0	\$45,000	\$0	\$0
Building Permits Value, Industrial	\$65,000	\$92,000	\$40,000	\$0	\$0
Building Permits Value, Institutional	\$0	\$15,000	\$350,000	\$0	\$0
Building Permits Value, Residential	\$138,000	\$79,000	\$282,000	\$0	\$0
Building Permits Value, Total	\$223,000	\$186,000	\$717,000	\$0	\$0
Total Housing Starts	0	0	2	0	0

Source: Statistics Canada 2000-2004 Building Permits (numbers may not add up due to rounding)

Total Housing Starts



Value of Building Permits



Dwellings

Occupied Private Dwellings by Type	1996	% of total	2001	% of total
Apartments	15	3.95%	10	2.82%
Detached Duplexes	0	0.00%	0	0.00%
Movable Dwellings	35	9.21%	30	8.45%
Other single attached house	0	0.00%	0	0.00%
Row and semi-detached house	20	5.26%	15	4.23%
Single-detached house	305	80.26%	295	83.10%
Total number of occupied private dwellings	380	100.00%	355	100.00%
Private dwellings, owned	285	75.00%	295	83.10%
Private Dwellings, rented	95	25.00%	60	16.90%

Source: Statistics Canada 1996 & 2001 Census (numbers may not add up due to rounding)

Private Dwellings by Period of Construction	# of Dwellings	% of total
Period of construction, before 1946	65	18.57%
Period of construction, 1946 - 1960	90	25.71%
Period of construction, 1961 - 1970	30	8.57%
Period of construction, 1971 - 1980	80	22.86%
Period of construction, 1981 - 1990	60	17.14%
Period of construction, 1991 - 2001	25	7.14%
Total number of private dwellings constructed	350	100.00%

Source: Statistics Canada 2001 Census (numbers may not add up due to rounding)

Disclaimer: Information in this profile has been provided from a variety of external sources. Although every effort has been made to ensure the accuracy, currency and reliability of the content and data, AlbertaFirst.com Ltd. accepts no responsibility in this regard.

© AlbertaFirst.com Ltd., 2006.