

Sundre

www.sundre.com

Welcome

If you are considering a relaxing much deserved holiday break, please consider coming to the **Sundre** area.

If you are looking to start a business or relocate here for any reason you are assured of a warm welcome and a bright future.

As you will see from this profile, there are a tremendous variety of businesses, services and experiences that you can take advantage of no matter what your holiday wishes or business/residential requirements.

We are a very friendly community, and we believe our peaceful and picturesque outdoors should be enjoyed at a leisurely pace through four seasons.

Visit us once and we know you'll be back!

Join our community and we know you will stay!

Mayor Roy Cummings

Town of Sundre

For more information on our community, please visit our website at

www.sundre.com



Mayor Roy Cummings had several years experience as a Town Councillor before being elected Mayor in November 2004. He is a long time resident of Sundre and is deeply committed to his community and its residents. Mayor Cummings is proud to call Sundre Home and extends a warm welcome to newcomers and tourists.



The present Sundre Town Council was elected to office in November, 2004. Top row, L-R: Councillors Jim Brosh, Joe Henze, Patricia Toone and George Taylor. Bottom row L-R: Councillor Ninnette Savage-Howe, Mayor Roy Cummings and Councillor Annette Clews

Area Overview

Located at the base of the Rocky Mountain Foothills on the banks of the scenic Red Deer River, the Town of Sundre is an attractive base for business and recreational activities.

The area has a well-rounded climate, due in part to its proximity to the mountains, and the frequent warm Chinook winds blowing from the west. Each changing season brings its own delights for nature lovers and for the pursuit of recreational activities.

Sundre is a thriving town of 2,267 persons, providing all of the advantages of "small town living" plus the benefits of the progressive development of a growing population.

Petroleum, lumber, agriculture and tourism industries make up the economic base of Sundre. The average retail sales, coupled with the recent boom in the area's petroleum industry, make it clear that Sundre is a community with a future. Employment opportunities are diverse and the economic climate is stable.

Sundre is easily accessible by two major highways and two secondary highways, which are all paved and in good to excellent condition. With an airport, access to bus service, and numerous trucking and courier companies, transportation to and from Sundre is very convenient.

Sundre is well-served with public educational facilities. Special and advanced education needs are met through the many nearby institutions catering to various educational requirements. Sundre has a full range of health facilities available. A modern hospital, dental clinic, and a 24-hour ambulance service provide full medical care.

The recreational opportunities in and around Sundre are a kaleidoscope of facilities, events and activities. Whether on water or on land; individual or team sports; summer or winter; spring or fall; Sundre has it all.

Sundre, with its proximity to major centres and prime recreational facilities, has everything to offer prospective residents and businesses. Tourist flow is increasing rapidly as the recreational opportunities are becoming better known. Wide open spaces, abundant with natural beauty that will sooth the soul, ensure peaceful, uncrowded experiences for those who seek them.

With a steady growing economy there is great potential and demand for business and industry alike. Community support is strong and opportunity is abundant.

Take a look at Sundre and you will see that we are "The Place to Be"...Now and throughout the years to come. More information about our community, please visit us at

Community Services

Municipal

Town of Sundre
P.O. Box 420
Sundre, Alberta
T0M 1X0

Tel: 403-638-3551
Fax: 403-638-2100
E-Mail: townmail@sundre.com

Town Office
Municipal Library
Public Works & Natural Gas System
Family & Community Support Services

Provincial

Forests
Medical Examiner-Coroner

Federal

Canada Post
Royal Canadian Mounted Police

Community Lifestyle

Recreation

There are many recreation opportunities in and around Sundre. The high alpine peaks of the Rocky Mountains act as a scenic backdrop to the vast Forest Reserve with its abundance of wildlife. Hiking, canoeing, water skiing, sailing, fishing, and camping are readily available for the outdoor enthusiast. The Red Deer River, which runs through Sundre, provides many water activities including canoeing and whitewater rafting. There are many whitewater rafting companies that use the river just upstream from Sundre. Bookings are available for day trips, weekend adventures and vacation packages. Horseback riding trips and holidays are also available. In the winter, cross-country skiing and snowmobiling are often the activities of choice. Hockey, skating and curling are provided for with two modern facilities: the Town Ice Arena and the Sundre Curling Club. A recently constructed bowling alley provides leisure time fun year round and a modern AquaPlex swimming pool/fitness facility has recently been completed.

Camping is an excellent way to enjoy the spectacular scenery, expansive wilderness and outdoor activities offered in our area. Nearby camping facilities include Greenwood Campground, Tall Timber Campground, Wagons West R.V. Park and Westward Ho Park. For the tastes of the more adventurous, there are many primitive camp sites available amidst some of nature's most spectacular scenery.

Sundre has a challenging 18-hole golf course, one of the finest in central Alberta. The course has a modern clubhouse and Pro Shop. Other golfing facilities Forest Heights, Coyote Creek and Wood n' Nickel Driving Range are located within easy driving distance of town.

Baseball is very popular in Sundre, as evidenced by the many evenings when the 4 ball diamonds are in use in the summer. Sundre

also boasts many small neighbourhood playgrounds for the young and young at heart. In town walking trails lead outdoor enthusiasts through pretty wooded areas and along the banks of the Red Deer and Bearberry Rivers.

Rodeos, which reflect the ranching heritage of the area, play a big part in enhancing the the fun and friendly atmosphere which is so much a part of Sundre's enduring appeal. The biggest of these rodeos is the Professional Rodeo, held each June.

An Arts Development Centre is centrally located to provide cultural opportunities and experiences for all age groups.

Community Organizations

Sundre has a wide range of community and service groups, which include those related to recreation, sports and culture. Resident participation is strong and enthusiasric volunteer activity is at the core of many successful programs, projects and services.

Religious Services

Religious choice is met through regular services at a variety of churches which include:

- Bergen Missionary Church
- Faith Lutheran Church
- Harmattan Church of the Nazarene
- McDougal Chapel Missionary Church
- Our Lady of Fatima Catholic Church
- St. Cuthbert & St. George's Anglican Church
- Garrington Community Church
- Sundre Gospel Centre
- Sundre Ministry Center
- Sundre Church of the Nazarene
- Sundre United Church
- Eagle Hill Community Church

Special Annual Events/Attractions

The Sundre Museum and Pioneer Village is located in Sundre and is open Monday through Sunday in Summertime (reduced hours in winter), There are several antique shops, art galleries, and other shopping facilities.

Professional Rodeo and Parade - June. Mother's Day Fly-In Breakfast at the Sundre Airport - May

Sundre has played host to numerous competitive sporting events, including the Big Country Winter Games and National Championships in Kayaking, Biathlon, Skiing, Orienteering and Jetboat Racing.

A wide selection of hotels, motels and eating establishment are available to meet the needs of visitors. Musical and comedy entertainment is provided by local taverns.

Hospitality

Accommodation

- Sundre Motor Inn
- Parkwood Motor Inn
- Sun Plaza Motel
- Sundre Hotel
- Chinook Country Inn
- Bulldog Inn

- King's Motel

Area Bed & Breakfast Accommodation

- A Bed in Heaven
- Deer Valley Bed & Breakfast
- Rustlers Guest Lodge
- Glen River Park
- MT Nest Bed & Breakfast

Other Area Accommodation

- Diamond Buffalo Guest Ranch
- Bearberry Saloon and Guest Cabins
- Mountain Aire Lodge

Restaurants

- Burger Baron and Pizza
- Granny's Country Kitchen
- Harvest Moon Restaurant
- Outlaw's Bar and Grill
- Sundre Hotel Restaurant
- Trendies Restaurant
- Cosmos
- Subway
- Classic Lunch & Cakery
- Sundre Motor Inn
- Piros Family Restaurant
- The Kickback Cafe
- The Sunny Cafe

Housing

Sundre has a very active real estate market and several new housing developments are in progress. Among these is a Town of Sundre sub-division in the North-East area of town. Lot sizes vary between 5,495 sq.feet and 9,446 sq.feet and services are available at or inside the property line. Building size requirements vary. Many lots are currently sold. Please contact the Town Office for more information.

Phone: (403) 638-3551; Fax: (403) 638-2100;

E-Mail: townmail@sundre.com

For more information on our community, please visit us at www.sundre.com



The Arts Centre provides a variety of cultural events throughout the year, including drama, music and dance



The Arena is a busy place during the winter months, serving the Town of Sundre and surrounding areas. Hockey is very popular, as is Figure Skating and Public Skating. The Schools also use the Arena on a regular basis.



The Town of Sundre is committed to beautifying the community and has been an active participant in "Communities in Bloom" for several years.

Economic Base

Petroleum, lumber, agriculture and tourism industries make up the economic base of Sundre. The average retail sales, coupled with the recent boom in the area's petroleum industry, make it clear that Sundre is a community with a future.

Tourism is also a growing industry due to the prime recreational areas in and around Sundre. Sundre has played host to a number

of sporting events, which has ensured the continuing growth of the tourism industry.

For more information on our community, please visit us at

www.sundre.com

Economic Facts

Sundre Forest Products Ltd., a Division of West Fraser Mills, is an integrated forest product company manufacturing dimensional lumber and treated wood products. Markets include western Canada, the U.S. mid-west and northwest, and Japan and Taiwan. The initial employee base has expanded from the original 40 to over 250 year-round at Sundre Forest Sundre Forest Products Ltd., a Division of West Fraser Mills, is an integrated forest product company manufacturing dimensional lumber and treated wood products. Markets include western Canada, the U.S. mid-west and northwest, and Japan and Taiwan. The initial employee base has expanded from the original 40 to over 250 year-round at Sundre Forest Products, 215 at West Fraser LVL and an additional 600 seasonal workers in the harvesting and reforestation aspects of the company.

In 1992, a 20-year Forest Management Agreement was signed with the Province of Alberta. This contracted to Sundre Forest Products the development, utilization and stewardship of 656,446 hectares of total land base. This ensures Sundre Forest Products a sustainable flow of wood fibre to meet its production requirements of 245 million board feet of lumber per year as well as supplying fiber to West Fraser LVL in the Rocky Mountain House area.

In 1994, production commenced at the West Fraser LVL engineered wood plant in the Rocky Mountain House area to produce veneer, and in the summer of 1997, it began producing laminated veneer lumber.

Among the participants in the growing petroleum industry are Shell Canada Limited, Amoco Petroleum, Mobil Oil, Petro Canada, Nova Corporation, and Alberta Gas & Chemical.

SPOG is a partnership of industry, government and the public. The purpose of SPOG is to create a long-term relationship between the Oil and Gas Industry and the members of the community based on trust, honesty and respect by way of sharing pertinent information.

Working together is the foundation of any community. Local residents need to participate, and SPOG actively seek volunteers. SPOG has a long track record of successfully including community members in influencing local developments.

SPOG was formed in 1992. Since then, this partnership has grown and evolved into a world-class model demonstrating community and industry working collaboratively.

SPOG now has 15 associate community representatives communicating to its regions, plus over 100 public volunteers on sub-committees. SPOG actively encourages concerned members of the public to participate to insure a healthy and balanced community where we can all prosper.

SPOG has gained international recognition for its work with community involvement and is a recognized leader in the province. The Sundre Community chose SPOG in 2003 as "Ambassador of the Year".

Check out the SPOG Website at: www.spog.ab.ca

Major Businesses

- Sundre Forest Products Limited
- Shell Canada Limited
- Solex
- BP Amoco Canada Petroleum
- Federated Pipelines

- Petro Canada
- Sundre I.G.A.
- Sundre Hotel
- Sundre Motor Inn
- Sundre Contracting
- Sundre Motors

Financial Institutions

- Bank of Montreal
- Alberta Treasury Branch
- Mountain View Credit Union

For more information on our community, please visit us at

www.sundre.com

Education

Sundre is part of the Chinook's Edge School Division #73, headquartered in Innisfail [Tel: 403-227-4272].

Daycare/Nursery

Sundre Playschool

Public Schools

Schools in Sundre include River Valley School [1-8] and Sundre High School [9-12]. Programs include a full range of sports and physical education programs, computers television production, vocational trades.

The Sundre Learning Centre offers flexible hours and computer based learning opportunities for at risk students.

Continuing Education provides learning experiences for adult students over 18 in a wide range of subjects.

Koinonia Christian Education Society also offers an educational alternative.

Separate Schools

N/A

Private Schools

There is an independent school in Olds, which serves the academic and vocational training needs of those with special needs.

For more information on our community, please visit our website at

www.sundre.com

Emergency Services

Fire Protection

Sundre is served by a 25-member volunteer fire department [Office Tel: 403-638-4044]. For emergencies dial 911

Police Services

Sundre is served by a 7-member local detachment of the Royal Canadian Mounted Police [RCMP] [Office Tel: 403-638-3675]. For

emergencies dial 911.

The Town of Sundre also has Special Constables who enforce specified Provincial Statutes and all Municipal By-Laws. (Office Tel: 403-638-3551)

Ambulance Services

Sundre & District Emergency Medical Services provides 24-hour ambulance service [Office Tel: 403-638-4150]. For emergencies dial 911.

For more information on our community, please visit us at

www.sundre.com

Health Care

Sundre has a full range of health facilities available, including a modern, 13-bed hospital with a Long Term Care wing and 5 doctors. Other medical services available in Sundre include a chiropractor, dentist, Mental Health Services, family physicians and two medical clinics. Massage Therapy Services and Physiotherapy Services are available through private practitioners. There are presently two Optometrists, a Dental Clinic and a Denture Clinic.

In addition to the Long Term Care provided through the hospital, there are four facilities specifically for seniors: Foothills Retreat Lodge, Hagen Manor, Wild Rose Court and Pioneer Place. These attractive accommodations provide independent living opportunities based on individual need. Private 50+ housing is also available in the area.

For more information on our community, please visit us at

www.sundre.com

Key Contacts for Business Development

Municipal

Town of Sundre
P.O. Box 420
112 - 1st Street N.W.
Sundre, Alberta
T0M 1X0
Tel: 403-638-3551
Fax: 403-638-2100
Email: townmail@sundre.com
townmail@sundre.com

Roy Cummings
Mayor

Nita Bartholow
Chief Administrative Officer (CAO)

Sundre & District Chamber of Commerce
Bob McIntyre
P.O. Box 1085
Sundre, Alberta
T0M 1X0
Tel: 403-638-3245

Fax: 403-638-1010
Email: sunchamb@telusplanet.net

Provincial (Updated December 2004)

Alberta Economic Development
2nd Floor, Provincial Building
4920 - 51 Street
Red Deer, Alberta
T4N 6K8
Tel: 403-340-5300
Fax: 403-340-5231
Andre Tremblay, Regional Manager
andre.tremblay@gov.ab.ca
Dawna Allard, Regional Development Officer
dawna.allard@gov.ab.ca
Lisa Houle, Regional Project Officer
lisa.houle@gov.ab.ca

Hon. Ty Lund
Minister of Infrastructure
Member of the Legislative Assembly [MLA]
Rocky Mountain House Constituency

Constituency Office
P.O. Box 1245
5115 - 50 Street
Rocky Mountain House, AB
T0M 1T0
Phone: (403) 845-5154
Fax: (403) 845-5525
rocky.mountainhouse@assembly.ab.ca

Legislature Office
#408 Legislature Building
10800 - 97 Avenue
Edmonton, AB
T5K 2B6
Phone: (780) 427-2080
Fax: (780) 422-2722

Federal (Updated May 2006)

Myron Thompson
Member of Parliament [MP]
Wildrose Constituency
Parliamentary Address

House of Commons
Ottawa, Ontario
K1A 0A6
Telephone: (613) 996-5152
Fax: (613) 947-4601
E-Mail: Thompson.M@parl.gc.ca

Constituency Address

213 Main Street, Bay 3, P.O. Box 3816

Airdrie, Alberta

T4B 2B9

Telephone: (403) 948-5103

Fax: (403) 948-0879

TTY:

E-Mail: ThompM1@parl.gc.ca

Location

The Town of Sundre is located in the Mountain View County, at the base of the Rocky Mountain Foothills in southwest-central Alberta. It is 40 km west of Olds, 130 km northwest of Calgary and 100 km southwest of Red Deer. The Bow Crow Forest Reserve - a haven for recreationalists and camera buffs - is a short drive west. It is here that the Forestry Trunk Road connects tourists to a wealth of experiences and adventures involving pristine lakes, tumbling waterfalls and abundant wildlife.

For more information on our community, please visit us at

www.sundre.com



Nestled in the Red Deer River Valley, close to the Alberta Foothills and the Rocky Mountains, Sundre enjoys the serenity of nature at its best.

Post Secondary Education

Sundre is conveniently located close to a number of post-secondary institutions located in Olds, Red Deer and Calgary.

For more information on our community, please visit us at

www.sundre.com

Taxation

| | <u>Residential/Farmland</u> | <u>Non-Residential</u> |
|---|-----------------------------|------------------------|
| 2005 | | |
| Municipal Tax Rate | 7.6829 | 7.6829 |
| Education - Alberta School Foundation Fund Tax Rate | 4.3830 | 4.3830 |
| Seniors Lodge Accommodation Tax Rate | .1450 | .1450 |

Tax Rates [2004]

Residential - Public 12.66

Non-Residential - Public 15.27

For more information on our community, please visit us at

www.sundre.com

Transportation

Air Services

The Sundre Airport has a 3,000 foot paved runway, a modern terminal and two hangars. The airport is also home to the Sundre Ranger Station helicopter. The nearest commercial and air freight services are at Calgary International Airport, 128 km from Sundre.

Rail Services

N/A

Highways

Sundre is accessible by Highway 27 and Highway 22, Secondary Highway 584 and Secondary Highway 760. These highways are paved and in excellent condition.

Trucking Firms

Sundre has a large number of trucking companies that serve the area.

Bus Services

Greyhound Bus Lines provides regularly scheduled inter-community service from Olds.

Couriers and Taxis

Sun-Cal Messenger Service, Shur-Way, Olds-Sundre Stage, Can-Par, Loomis, Purolator Courier, Sundre Taxi, Mountain View Taxi, Sundre Community Van, Rocky Mountain Charters (tour buses)

For more information on our community, please visit us at

www.sundre.com

Utilities

Electrical Power

Epcor

Calgary, Alberta

Tel: 310-4300

Natural Gas

Town of Sundre
112-1st Street N.W.
P.O. Box 420
Sundre, Alberta
T0M 1X0
Tel: 403-638-3551
Fax: 403-638-2100
Email: townmail@sundre.com

Telephone

Telus
Tel: 403-310-2255

Town of Sundre
112 - 1st Street N.W.
P.O. Box 420
Sundre, Alberta
T0M 1X0
Tel: 403-638-3551
Fax: 403-638-2100
Email: townmail@sundre.com

Water Supply

The source of water is 2 deep water wells. The reservoir capacity is 550,000 gallons. The rate for water is \$8.00 per month plus \$1.08 per cubic metre.

Waste Management

Sewage treatment is provided by a modern aerated lagoon. The rate is \$8.00 per month plus \$.40 per cubic metre of water used.

Garbage/Recycling

Garbage is picked up at the front curb (roll out carts supplied by the Town of Sundre) on alternating Thursdays.

Composting is picked up at the front curb (roll out carts supplied by the Town of Sundre) on alternating Thursdays.

Recycling - residents may deposit recycled products at the recycling center by the County Shop in Sundre or at the Sundre Eco Site.

For more information on our community, please visit us at
www.sundre.com



Being a community that encourages recycling, Sundre has a dual garbage pick-up system. Regular garbage is collected bi-weekly and household and garden compost is collected bi-weekly in Spring, Summer and Fall and monthly in Winter. There is also a conveniently located Recycling Centre

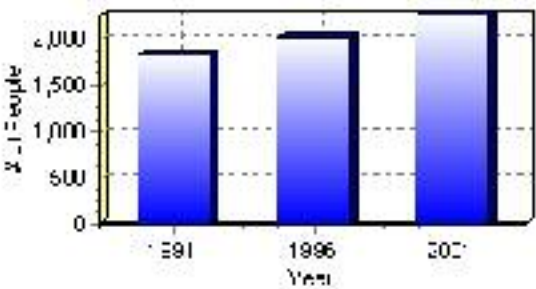
Population

Total Population

| | |
|-------------------------------|--------|
| Population 2004* | 2,267 |
| Population 2003* | 2,267 |
| Population 2002* | 2,267 |
| Population 2001** | 2,265 |
| Population 2000* | 2,190 |
| Population 1996** | 2,028 |
| Population 1991** | 1,834 |
| Population % change 1991-1996 | 9.57% |
| Population % change 1996-2001 | 10.54% |

* Source: Official Population List, Alberta Municipal Affairs
** Source: Statistics Canada 1991, 1996, & 2001 Census

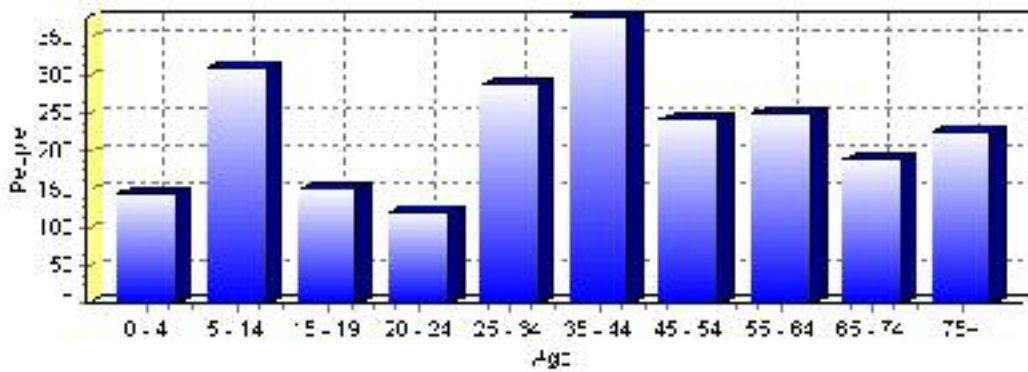
Total Population 1991-2001



| Population by Age and Gender | 1996 Male | 1996 Female | 1996 Total | 2001 Male | 2001 Female | 2001 Total |
|------------------------------|-----------|-------------|------------|-----------|-------------|------------|
| Age 0 - 4 | 75 | 65 | 140 | 80 | 65 | 145 |
| Age 5 - 14 | 175 | 140 | 315 | 160 | 150 | 310 |
| Age 15 - 19 | 80 | 70 | 150 | 80 | 70 | 150 |
| Age 20 - 24 | 65 | 55 | 120 | 60 | 60 | 120 |
| Age 25 - 34 | 135 | 130 | 265 | 150 | 135 | 285 |
| Age 35 - 44 | 150 | 170 | 320 | 190 | 185 | 375 |
| Age 45 - 54 | 110 | 125 | 235 | 120 | 120 | 240 |
| Age 55 - 64 | 80 | 85 | 165 | 110 | 140 | 250 |
| Age 65 - 74 | 75 | 80 | 155 | 90 | 100 | 190 |
| Age 75 and older | 65 | 90 | 155 | 75 | 150 | 225 |
| Total All Persons | 1,015 | 1,015 | 2,030 | 1,100 | 1,165 | 2,265 |

Source: Statistics Canada 1996 & 2001 Census (numbers may not add up due to rounding)

Sundre Population by Age Group (2001)

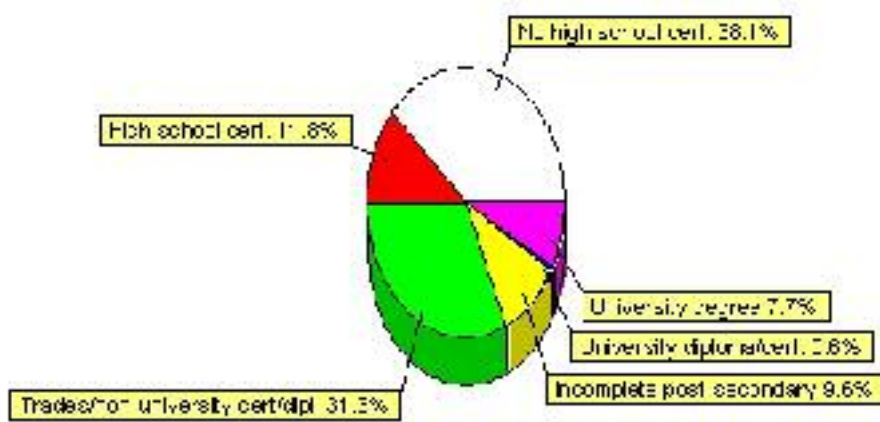


Education Statistics

| Highest level of schooling for Population 20yrs and older | 2001 | % |
|---|-------|---------|
| People without high school certificates | 615 | 38.08% |
| People with high school certificates | 190 | 11.76% |
| People with trades or non-university certificate or diploma | 505 | 31.27% |
| People with post-secondary education (not completed) | 155 | 9.60% |
| People with university diploma/certificate | 10 | 0.62% |
| People with university degree | 125 | 7.74% |
| Total Population 20 years and older | 1,615 | 100.00% |

Source: Statistics Canada 2001 Census (numbers may not add up due to rounding)

Sundre Highest Level of Schooling 2001



| Population with Post Secondary Qualifications | 1996 | % | 2001 | % |
|---|------|---------|------|---------|
| Agriculture and biological sciences | 30 | 5.50% | 45 | 6.92% |
| Commerce, management and business administration | 105 | 19.27% | 125 | 19.23% |
| Educational, recreational and counseling services | 45 | 8.26% | 110 | 16.92% |
| Engineering and applied science tech. and trades | 210 | 38.53% | 225 | 34.62% |
| Engineering and applied sciences | 15 | 2.75% | 10 | 1.54% |
| Fine and applied arts | 35 | 6.42% | 20 | 3.08% |
| Health professionals, science and technologies | 55 | 10.09% | 70 | 10.77% |
| Humanities and related fields | 20 | 3.67% | 10 | 1.54% |
| Mathematics and physical sciences | 0 | 0.00% | 0 | 0.00% |
| Social sciences and related fields | 30 | 5.50% | 30 | 4.62% |
| Other and/or no specialization | 0 | 0.00% | 0 | 0.00% |
| Total people with post secondary qualifications | 545 | 100.00% | 650 | 100.00% |
| Females with post-secondary qualifications | 250 | 45.87% | 320 | 49.23% |
| Males with post-secondary qualifications | 295 | 54.13% | 330 | 50.77% |

Source: Statistics Canada 1996 & 2001 Census (numbers may not add up due to rounding)

Labour Force

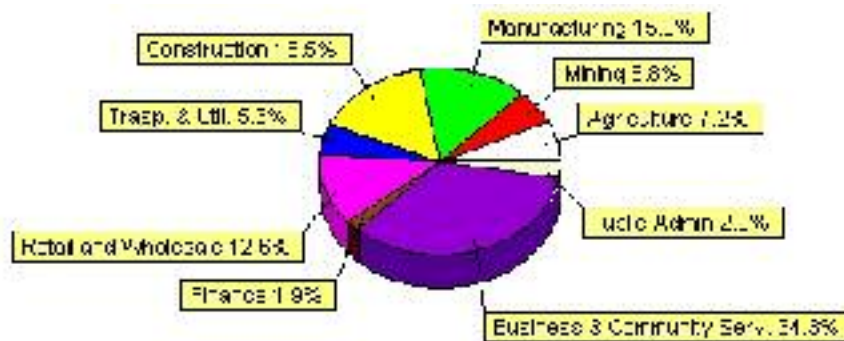
| Labour force by activity | 1996 | 2001 |
|-------------------------------------|--------|--------|
| In the labour force, both sexes | 905 | 1,045 |
| Not in the labour force, both sexes | 605 | 725 |
| Total population 15 and over | 1,515 | 1,780 |
| Employed, both sexes | 785 | 930 |
| Unemployed, both sexes | 125 | 115 |
| Participation rate, both sexes | 60.00% | 59.00% |
| Unemployment rate, both sexes | 13.00% | 11.00% |

Source: Statistics Canada 1996 & 2001 Census (numbers may not add up due to rounding)

| Labour Force by Industry Division | 1996 | % of total | 2001 | % of total |
|-----------------------------------|------|------------|-------|------------|
| Agriculture | 30 | 3.35% | 75 | 7.25% |
| Mining | 140 | 15.64% | 60 | 5.80% |
| Manufacturing | 80 | 8.94% | 155 | 14.98% |
| Construction | 65 | 7.26% | 160 | 15.46% |
| Transportation. & Utilities | 110 | 12.29% | 55 | 5.31% |
| Retail and Wholesale | 100 | 11.17% | 130 | 12.56% |
| Finance | 30 | 3.35% | 20 | 1.93% |
| Business & Community Services | 285 | 31.84% | 355 | 34.30% |
| Public Administration | 30 | 3.35% | 30 | 2.90% |
| Total All Industries | 895 | 100.00% | 1,035 | 100.00% |

Source: Statistics Canada 1996 & 2001 Census (numbers may not add up due to rounding)

Sundre Labour Force By Industry - 2001



| Labour Force by Major Occupational Groups | 1996 | % | 2001 | % |
|---|------|--------|------|--------|
| Management occupations | 105 | 11.73% | 95 | 9.18% |
| Business, Finances and administrative occupations | 105 | 11.73% | 130 | 12.56% |
| Natural and applied sciences and related occupations | 35 | 3.91% | 30 | 2.90% |
| Health occupations | 20 | 2.23% | 40 | 3.86% |
| Occupations in social science; education; government and religion | 0 | 0.00% | 60 | 5.80% |
| Occupations in art; culture; recreation and sport | 25 | 2.79% | 15 | 1.45% |

| | | | | |
|--|-----|---------|-------|---------|
| Sales and service occupations | 240 | 26.82% | 205 | 19.81% |
| Trades; transport; equipment operators and related occupations | 170 | 18.99% | 270 | 26.09% |
| Occupations unique to primary industry | 60 | 6.70% | 85 | 8.21% |
| Occupations unique to processing; manufacturing and utilities | 135 | 15.08% | 100 | 9.66% |
| Occupations not elsewhere classified | 10 | 1.12% | 15 | 1.45% |
| Total - All Occupations (major groups) | 895 | 100.00% | 1,035 | 100.00% |
| Females - All Occupations | 350 | 39.11% | 440 | 42.51% |
| Males - All Occupations | 545 | 60.89% | 595 | 57.49% |

Source: Statistics Canada 1996 & 2001 Census (numbers may not add up due to rounding)

Income

| Family Income (Number of Families) | 1996 | % | 2001 | % |
|---|-------------|----------|-------------|----------|
| less than \$19,999 | 35 | 7.87% | 70 | 14.43% |
| \$20,000 - \$39,999 | 145 | 32.58% | 145 | 29.90% |
| \$40,000 - \$59,999 | 140 | 31.46% | 150 | 30.93% |
| \$60,000 and over | 125 | 28.09% | 215 | 44.33% |
| Total number of families | 445 | 100.00% | 580 | 119.59% |
| Average family income | \$48,723 | | \$55,265 | |
| Median family income | \$46,408 | | \$52,661 | |

Source: Statistics Canada 1996 & 2001 Census (numbers may not add up due to rounding)

| Household Income (Number of Households) | 1996 | % | 2001 | % |
|--|-------------|----------|-------------|----------|
| less than \$19,999 | 195 | 24.38% | 220 | 23.40% |
| \$20,000 - \$39,999 | 270 | 33.75% | 255 | 27.13% |
| \$40,000 - \$59,999 | 150 | 18.75% | 180 | 19.15% |
| \$60,000 and over | 80 | 10.00% | 285 | 30.32% |
| Total number of households | 800 | 100.00% | 940 | 100.00% |
| Average household income | \$40,487 | | \$46,045 | |
| Median household income | \$34,594 | | \$39,677 | |

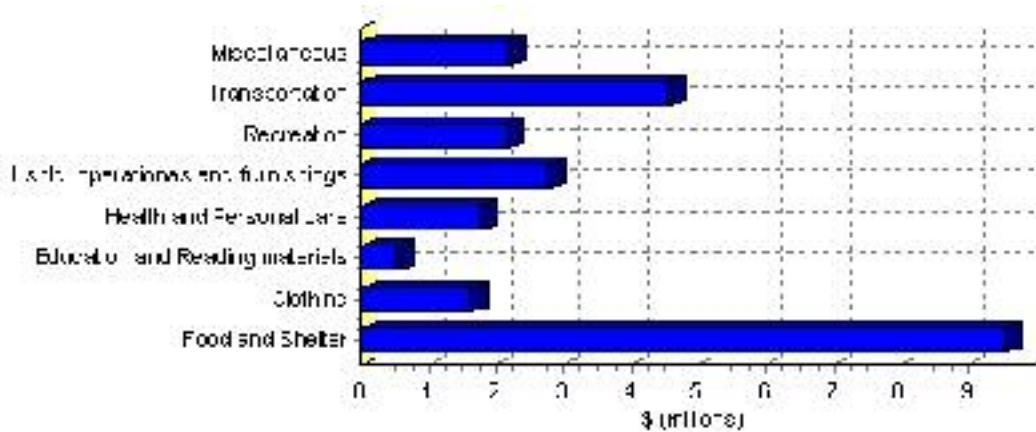
Source: Statistics Canada 1996 & 2001 Census (numbers may not add up due to rounding)

Family Expenditure

| Expenditure Category | 1992 | % of total | 1996 | % of total |
|-----------------------------------|--------------|------------|--------------|------------|
| Food and Shelter | \$7,266,200 | 37.65% | \$9,559,777 | 37.95% |
| Clothing | \$1,290,600 | 6.69% | \$1,619,569 | 6.43% |
| Education and Reading materials | \$389,365 | 2.02% | \$531,498 | 2.11% |
| Health and Personal care | \$1,207,635 | 6.26% | \$1,774,704 | 7.04% |
| Hshld. operations and furnishings | \$2,118,210 | 10.98% | \$2,781,658 | 11.04% |
| Recreation | \$1,530,710 | 7.93% | \$2,171,509 | 8.62% |
| Transportation | \$3,940,485 | 20.42% | \$4,568,899 | 18.14% |
| Miscellaneous | \$1,545,210 | 8.01% | \$2,184,387 | 8.67% |
| Total Current Consumption | \$19,297,400 | 100.00% | \$25,192,001 | 100.00% |
| Total # of Households | 690 | | 800 | |
| Average Consumption per Household | \$27,967 | | \$31,490 | |

Source: Statistics Canada Family Expenditure Survey 1992 & 1996 (numbers may not add up due to rounding).

Sundre Family Expenditures (1996)

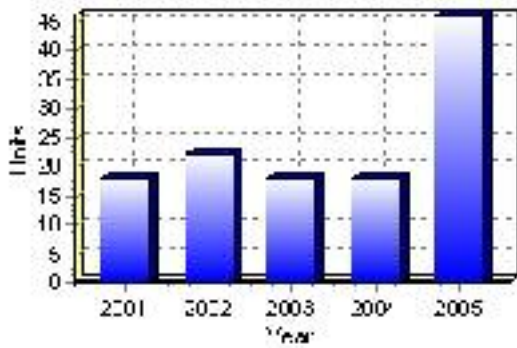


Building Permits

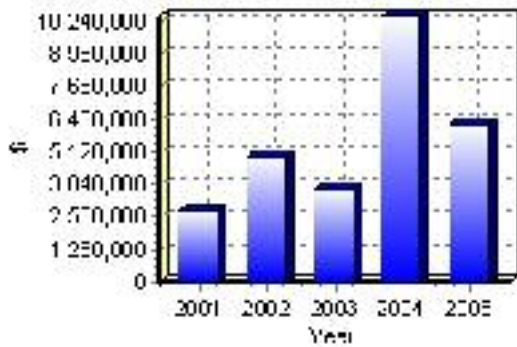
| Total Building Permit Values | 2001 | 2002 | 2003 | 2004 | 2005 |
|---------------------------------------|-------------|-------------|-------------|--------------|-------------|
| Building Permits Value, Commercial | \$448,000 | \$684,000 | \$1,260,000 | \$419,000 | \$776,000 |
| Building Permits Value, Industrial | \$0 | \$300,000 | \$30,000 | \$0 | \$0 |
| Building Permits Value, Institutional | \$327,000 | \$1,453,000 | \$30,000 | \$7,361,000 | \$8,000 |
| Building Permits Value, Residential | \$2,043,000 | \$2,515,000 | \$2,405,000 | \$2,689,000 | \$5,423,000 |
| Building Permits Value, Total | \$2,818,000 | \$4,952,000 | \$3,725,000 | \$10,469,000 | \$6,207,000 |
| Total Housing Starts | 18 | 22 | 18 | 18 | 46 |

Source: Statistics Canada 2000-2004 Building Permits (numbers may not add up due to rounding)

Total Housing Starts



Value of Building Permits



Dwellings

| Occupied Private Dwellings by Type | 1996 | % of total | 2001 | % of total |
|--|-------------|-------------------|-------------|-------------------|
| Apartments | 25 | 3.13% | 50 | 5.32% |
| Detached Duplexes | 10 | 1.25% | 5 | 0.53% |
| Movable Dwellings | 100 | 12.50% | 5 | 0.53% |
| Other single attached house | 25 | 3.13% | 0 | 0.00% |
| Row and semi-detached house | 105 | 13.13% | 125 | 13.30% |
| Single-detached house | 545 | 68.13% | 745 | 79.26% |
| Total number of occupied private dwellings | 800 | 100.00% | 940 | 100.00% |
| Private dwellings, owned | 540 | 67.50% | 725 | 77.13% |
| Private Dwellings, rented | 255 | 31.88% | 210 | 22.34% |

Source: Statistics Canada 1996 & 2001 Census (numbers may not add up due to rounding)

| Private Dwellings by Period of Construction | # of Dwellings | % of total |
|--|-----------------------|-------------------|
| Period of construction, before 1946 | 40 | 4.26% |
| Period of construction, 1946 - 1960 | 70 | 7.45% |
| Period of construction, 1961 - 1970 | 115 | 12.23% |
| Period of construction, 1971 - 1980 | 315 | 33.51% |
| Period of construction, 1981 - 1990 | 175 | 18.62% |
| Period of construction, 1991 - 2001 | 225 | 23.94% |
| Total number of private dwellings constructed | 940 | 100.00% |

Source: Statistics Canada 2001 Census (numbers may not add up due to rounding)

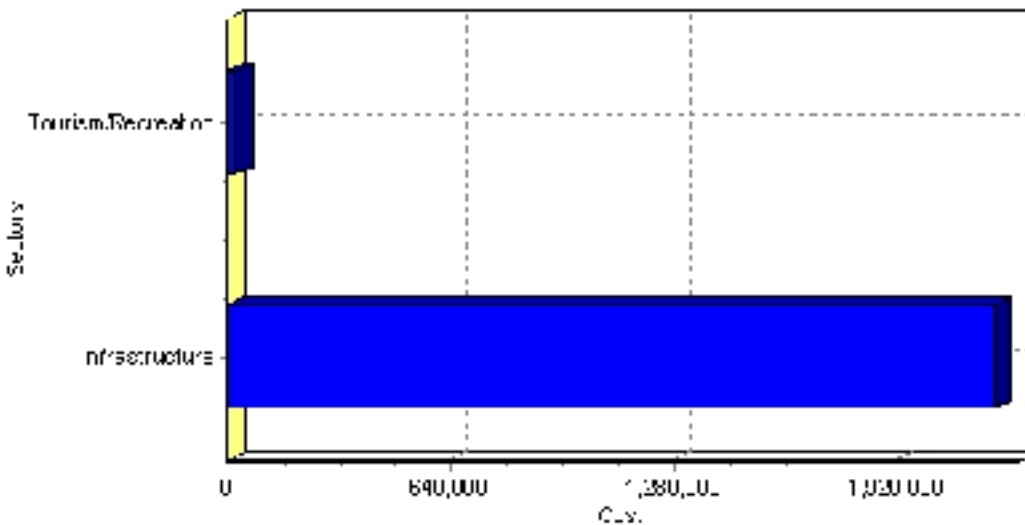
Projects

Summary of Projects in Sundre as of September 2006

| Project Sector | Number of Projects | Project Cost |
|--------------------|--------------------|--------------|
| Infrastructure | 1 | \$2,200,000 |
| Tourism/Recreation | 1 | \$24,700 |
| Total | 2 | \$2,224,700 |

This inventory lists projects in Alberta that have recently been completed, are under construction, or are proposed to start construction. Not all projects are listed due to reasons of confidentiality and/or due to information not being available at the time of printing. Project data is obtained from public information sources, where possible, this data has been verified with the project proponent/developer, users of the Inventory may wish to confirm project data with the proponent/developer. The inventory does not breakdown project expenditures by any given year. The cost of a project is the value of expenditures expected over all phases of project construction, which may span over two or more years. Cost of projects listed in the Inventory are estimated values only. Source: Alberta Economic Development, 2004.

Value of Projects by Sector (as of September 2006)



| Project Status | Number of Projects | Project Cost |
|--------------------|--------------------|--------------|
| Announced | 1 | \$24,700 |
| Under Construction | 1 | \$2,200,000 |
| Total | 2 | \$2,224,700 |

This inventory lists projects in Alberta that have recently been completed, are under construction, or are proposed to start construction. Not all projects are listed due to reasons of confidentiality and/or due to information not being available at the time of printing. Project data is obtained from public information sources, where possible, this data has been verified with the project proponent/developer, users of the Inventory may wish to confirm project data with the proponent/developer. The inventory does not breakdown project expenditures by any given year. The cost of a project is the value of expenditures expected over all phases of project construction, which may span over two or more years. Cost of projects listed in the Inventory are estimated values only. Source: Alberta Economic Development, 2004.

Largest Projects in Sundre as of September 2006

| Company Name | Project Description | Project Location | Project Cost | Construction Schedule | Status |
|----------------|---|------------------|--------------|-----------------------|--------------------|
| Town of Sundre | NEW COMMUNITY CENTRE | Sundre | \$2,200,000 | 2006-2006 | Under Construction |
| Town of Sundre | Arena Repairs / Campground / Baseball / Pedestrian Bridge | Sundre | \$24,700 | 2006-2007 | Announced |

Disclaimer: Information in this profile has been provided from a variety of external sources. Although every effort has been made to ensure the accuracy, currency and reliability of the content and data, AlbertaFirst.com Ltd. accepts no responsibility in this regard.

© AlbertaFirst.com Ltd., 2006.