

Galahad

Welcome

Welcome to our community. We hope the information contained within this profile is useful. If additional information is required, please contact our representative from the "Key Contacts" section.

Area Overview

The Village of Galahad is a small community that is strategically located in east-central Alberta to provide services to a decentralized population involved in agricultural, oil & gas production, strip coal mining and electrical power production. Its trading area extends far beyond the Village perimeter.

Community Services

Municipal

Village of Galahad
Box 66
Galahad, Alberta
T0B 1R0
Tel: 780-583-3741

Community Library

Provincial

N/A

Federal

Canada Post

Community Lifestyle

Recreation

In the summer, Big Knife Provincial Park, with its many camping facilities and attractive hiking trails is a popular place. In the winter the same hiking paths become spectacular cross country ski trails. Twelve miles south of Galahad is the Valley Ski Hill, where there are 6 runs, a T-bar and rope tow, a hill groomer, concession booth and ski rental shop.

A new community complex houses a 4-lane bowling alley, community library, concession area and community hall. Also, the school gym is being renovated and will be able to accommodate all kinds of sports, e.g. basketball, volleyball, etc.

Community Organizations

Local community organizations include the Lions Club and Galahad and District Agricultural Society.

Religious Services

- St. Donatus Catholic Church

- St. Paul's Presbyterian Church
- Missionary Church

Special Annual Events/Attractions

N/A

Hospitality

Accommodation

- Galahad Hotel
- Galahad Motel

Restaurants

- York Cafe

Economic Base

The major economic base of the Galahad region is farming, as well as oil & gas production, mining and power generation.

Economic Facts

Many area residents are employed at the Alberta Power Ltd. plant on the Battle River, the strip coal mine to the southwest and also oil & gas fields in the Merna area.

Major Businesses Products/Services

N/A N/A

Financial Institutions

N/A

Education

Galahad is a part of the Battle River Regional School Division #31, headquartered in Camrose [Tel: 780-672-6131]. Elementary, junior high and senior high school students are bussed to Forestburg.

Daycare/Nursery

N/A

Public

N/A

Separate

N/A

Private

N/A

Emergency Services

Fire Protection

Fire protection is provided by 2 equipped trucks and 20 volunteer fire fighters responsible for the urban and surrounding rural areas [Tel: 780-583-3779].

Police Services

Police protection for the Village is provided by the Killam detachment of the Royal Canadian Mounted Police [RCMP] [Tel: 780-385-3502].

Ambulance Services

Galahad and its surrounding area have the services of an ambulance, owned by the County of Flagstaff Ambulance Authority, and staffed by trained local personnel [Tel: 780-583-3779].

Health Care

Galahad residents have access to the Daysland General Hospital, a new 15-bed active treatment hospital. Medical clinic services are available in Forestburg.

In Galahad there is a senior citizen's housing complex that provides home care, home-makers services and counselling.

Key Contacts for Business Development

Municipal

Village of Galahad
Box 66
Galahad, Alberta
T0B 1R0
Tel: 780-583-3741

Frank Herle
Mayor

Shelly Armstrong
Administrator

Provincial (Updated December 2004)

Alberta Economic Development
Allan Walkey, Regional Manager
al.walkey@gov.ab.ca
Dale Beddoes, Client Services Representative
dale.beddoes@gov.ab.ca

5005 - 49 Street
Camrose, Alberta
T4V 1N5
Tel: 780-679-1235

Fax: 780-679-1250

Doug Griffiths
Member of the Legislative Assembly [MLA]
Battle River-Wainwright Constituency
#130 Legislature Building
10800-97 Avenue
Edmonton AB
T5K 2B6
Tel: 780-422-5369
Fax: 780-422-5385

Constituency Office:
#201, 1006 - 4 Avenue
Wainwright AB
T9W 2R3
Tel: 780-842-6177
Fax: 780-842-3171

Federal (Updated May, 2006)

Leon Benoit
Member of Parliament [MP]
Vegreville—Wainwright Constituency
House of Commons
Ottawa, Ontario
K1A 0A6

Location

The Village of Galahad is located in the County of Flagstaff, 5 km north of the Battle River Valley. Galahad is half way between Killam and Castor on Highway 861.

Post Secondary Education

Augustana University College, located in Camrose, has over 1,000 students, a campus residence and has degree granting status in 21 disciplines [arts and sciences].

Edmonton, Calgary and Red Deer based post-secondary institutions are also accessible to Galahad residents.

Taxation

	<u>Residential/Farmland</u>	<u>Non-Residential</u>
2005		
Municipal Tax Rate	29.7100	29.7100
Education - Alberta School Foundation Fund Tax Rate	4.8380	8.5940
Seniors Lodge Accommodation Tax Rate	.2760	.2760

Mill Rates [1994]

- Residential - Public N/A
- Residential - Separate N/A
- Non-Residential - Public N/A
- Non-Residential - Separate N/A

Transportation

Air Services

The nearest airstrip is at the Castor Airport. The nearest commercial and freight services are offered at Calgary International Airport or Edmonton International Airport.

Rail Service

Galahad is served by Canadian National Railways.

Highways

The main connecting highway is Secondary Road 861, leading north to Highway 53 and south to Castor. Secondary Road 861 runs parallel to Highway 36, which leads north to Killam and south to Hanna.

Trucking Firms

- Hiway 9 Express
- Dove Transport Ltd.
- Flagstaff Trucking

Bus Services

Regularly scheduled bus service is available at Forestburg, 16 km northeast of Galahad.

Couriers and Taxis

Loomis and Purolator Couriers

Utilities

Electrical Power

Alberta Power Ltd.
Forestburg, Alberta
Tel: 780-582-3657

Natural Gas

South Flagstaff Gas Co-op
Alliance, Alberta
Tel: 780-879-3602

Telephone

Alberta Government Telephones Ltd.
10020 - 100 Street
Edmonton, Alberta

Tel: 780-493-4400

Water Supply

The source of water is two wells located north of the Village.

Waste Management

Waste management services are provided by Flagstaff Regional Solid Waste Management Authority.

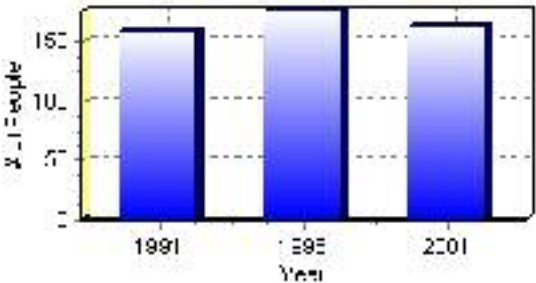
Population

Total Population

Population 2004*	161
Population 2003*	161
Population 2002*	161
Population 2001**	160
Population 2000*	175
Population 1996**	175
Population 1991**	158
Population % change 1991-1996	9.71%
Population % change 1996-2001	-8.70%

* Source: Official Population List, Alberta Municipal Affairs
** Source: Statistics Canada 1991, 1996, & 2001 Census

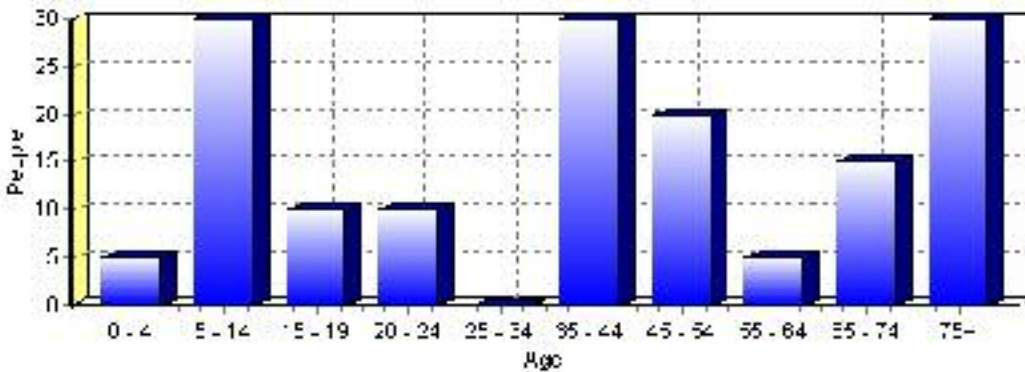
Total Population 1991-2001



Population by Age and Gender	1996 Male	1996 Female	1996 Total	2001 Male	2001 Female	2001 Total
Age 0 - 4	10	10	20	5	0	5
Age 5 - 14	20	10	30	15	15	30
Age 15 - 19	5	0	5	5	5	10
Age 20 - 24	5	5	10	5	5	10
Age 25 - 34	5	5	10	0	0	0
Age 35 - 44	15	15	30	15	15	30
Age 45 - 54	0	10	10	10	10	20
Age 55 - 64	10	10	20	0	5	5
Age 65 - 74	10	10	20	10	5	15
Age 75 and older	10	25	35	10	20	30
Total All Persons	85	90	175	80	80	160

Source: Statistics Canada 1996 & 2001 Census (numbers may not add up due to rounding)

Galahad Population by Age Group (2001)

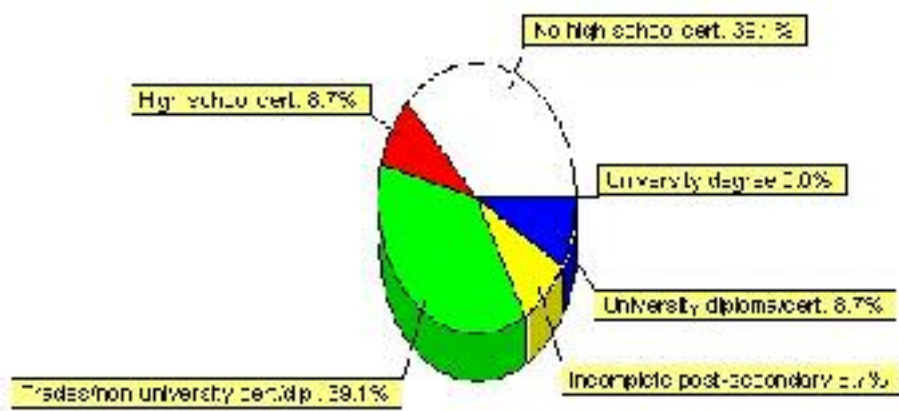


Education Statistics

Highest level of schooling for Population 20yrs and older	2001	%
People without high school certificates	45	39.13%
People with high school certificates	10	8.70%
People with trades or non-university certificate or diploma	45	39.13%
People with post-secondary education (not completed)	10	8.70%
People with university diploma/certificate	10	8.70%
People with university degree	0	0.00%
Total Population 20 years and older	115	100.00%

Source: Statistics Canada 2001 Census (numbers may not add up due to rounding)

Galahad Highest Level of Schooling 2001



Population with Post Secondary Qualifications	1996	%	2001	%
Agriculture and biological sciences	0	0.00%	0	0.00%
Commerce, management and business administration	10	18.18%	25	50.00%
Educational, recreational and counseling services	0	0.00%	0	0.00%
Engineering and applied science tech. and trades	15	27.27%	10	20.00%
Engineering and applied sciences	0	0.00%	0	0.00%
Fine and applied arts	0	0.00%	0	0.00%
Health professionals, science and technologies	25	45.45%	15	30.00%
Humanities and related fields	0	0.00%	0	0.00%
Mathematics and physical sciences	0	0.00%	0	0.00%
Social sciences and related fields	0	0.00%	0	0.00%
Other and/or no specialization	0	0.00%	0	0.00%
Total people with post secondary qualifications	55	100.00%	50	100.00%
Females with post-secondary qualifications	30	54.55%	40	80.00%
Males with post-secondary qualifications	25	45.45%	10	20.00%

Source: Statistics Canada 1996 & 2001 Census (numbers may not add up due to rounding)

Labour Force

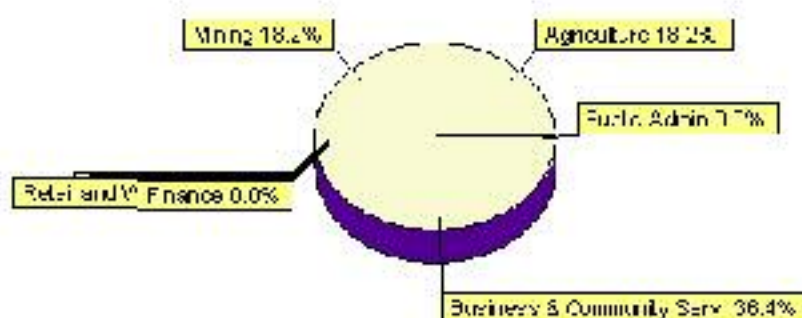
Labour force by activity	1996	2001
In the labour force, both sexes	50	55
Not in the labour force, both sexes	70	70
Total population 15 and over	125	120
Employed, both sexes	50	50
Unemployed, both sexes	10	0
Participation rate, both sexes	40.00%	46.00%
Unemployment rate, both sexes	20.00%	0.00%

Source: Statistics Canada 1996 & 2001 Census (numbers may not add up due to rounding)

Labour Force by Industry Division	1996	% of total	2001	% of total
Agriculture	10	20.00%	10	18.18%
Mining	10	20.00%	10	18.18%
Manufacturing	0	0.00%	0	0.00%
Construction	10	20.00%	0	0.00%
Transportation. & Utilities	10	20.00%	0	0.00%
Retail and Wholesale	10	20.00%	0	0.00%
Finance	0	0.00%	0	0.00%
Business & Community Services	10	20.00%	20	36.36%
Public Administration	0	0.00%	0	0.00%
Total All Industries	50	100.00%	55	100.00%

Source: Statistics Canada 1996 & 2001 Census (numbers may not add up due to rounding)

Galahad Labour Force By Industry - 2001



Labour Force by Major Occupational Groups	1996	%	2001	%
Management occupations	0	0.00%	15	25.00%
Business, Finances and administrative occupations	0	0.00%	10	16.67%
Natural and applied sciences and related occupations	0	0.00%	0	0.00%
Health occupations	0	0.00%	10	16.67%
Occupations in social science; education; government and religion	0	0.00%	0	0.00%
Occupations in art; culture; recreation and sport	0	0.00%	0	0.00%

Sales and service occupations	10	18.18%	0	0.00%
Trades; transport; equipment operators and related occupations	15	27.27%	10	16.67%
Occupations unique to primary industry	15	27.27%	10	16.67%
Occupations unique to processing; manufacturing and utilities	0	0.00%	0	0.00%
Occupations not elsewhere classified	0	0.00%	0	0.00%
Total - All Occupations (major groups)	55	100.00%	60	100.00%
Females - All Occupations	25	45.45%	25	41.67%
Males - All Occupations	30	54.55%	30	50.00%

Source: Statistics Canada 1996 & 2001 Census (numbers may not add up due to rounding)

Dwellings

Occupied Private Dwellings by Type	1996	% of total	2001	% of total
Apartments	0	0.00%	0	0.00%
Detached Duplexes	0	0.00%	0	0.00%
Movable Dwellings	15	20.00%	0	0.00%
Other single attached house	0	0.00%	0	0.00%
Row and semi-detached house	0	0.00%	0	0.00%
Single-detached house	55	73.33%	55	91.67%
Total number of occupied private dwellings	75	100.00%	60	100.00%
Private dwellings, owned	70	93.33%	55	91.67%
Private Dwellings, rented	10	13.33%	0	0.00%

Source: Statistics Canada 1996 & 2001 Census (numbers may not add up due to rounding)

Private Dwellings by Period of Construction	# of Dwellings	% of total
Period of construction, before 1946	15	25.00%
Period of construction, 1946 - 1960	10	16.67%
Period of construction, 1961 - 1970	10	16.67%
Period of construction, 1971 - 1980	15	25.00%
Period of construction, 1981 - 1990	10	16.67%
Period of construction, 1991 - 2001	0	0.00%
Total number of private dwellings constructed	60	100.00%

Source: Statistics Canada 2001 Census (numbers may not add up due to rounding)

Disclaimer: Information in this profile has been provided from a variety of external sources. Although every effort has been made to ensure the accuracy, currency and reliability of the content and data, AlbertaFirst.com Ltd. accepts no responsibility in this regard.

© AlbertaFirst.com Ltd., 2006.