

# Linden

## Welcome

### LINDEN

Alberta, Canada

"Rural Industrial Capital of Alberta"



Linden is a beautiful and safe place to raise a family. The friendly, community involved Village is home to over 630 residents.

The natural coulee that bisects the Village offers a picturesque view, and is home to geese, deer, herons and wild flowers. Though the rolling hills and trees are something Linden is pleased to have, the Village prides itself in being the: "**Rural Industrial Capital of Alberta.**"

Linden is home to businesses like a feed mill, truck parts manufacturer and designer of commercial, agricultural, industrial and retail buildings. The agriculturally based community is committed to attracting new, diverse businesses and has developed a vast network of manufacturing, service and supply centers.

A visit to Linden will uncover a unique shopping experience. Drop into our homemade toy & clock store, see the handcrafted oak furniture, visit the nearby woolen mill, or sign up for quilting classes at our famous fabric store.

Linden offers a relaxing environment, and has a variety of services. Major amenities are close at hand as there are several larger urban areas located near the Village. The rural community is approximately 60 minutes from either Calgary or Red Deer, 45 minutes to Strathmore, Drumheller or Olds, and 20 minutes to Three Hills.

Our friendly community invites you to explore the economic opportunities found in Linden and hopes that you will consider a move to our thriving Village.

## Area Overview

Linden's community spirit and sense of cooperation began to grow when Mennonite farmers first settled the Village in 1902. Their dedication and hard work led to the founding of a nationally recognized cheese factory, which operated during the Depression.

Linden has developed a sense of optimism, strong work ethic and has a rich cultural and spiritual tradition that still exists today. These qualities have helped secure the continued growth of the Village's business community. Residents in Linden and area willingly contribute to their Village as the philosophy is that you put back more into your community than you take out of it.

Linden was incorporated into a Village in 1964 with 264 residents. Now with a

population of 630 plus ( 90% Mennonite), Linden readily works with the growing community to maintain its vision of meeting the needs of residents and business owners and attracting new, diverse businesses. One of the Village Councils beliefs is that Linden's concerns do not end at our village boundaries - we cannot survive without the support of the rural residents and they depend on us for our services.

## **ALBERTA, THE BEST PLACE TO WORK, LIVE AND DO BUSINESS**

The province of Alberta is a leader in the Canadian economy. Alberta has had the fastest growing economy in Canada over the past two decades, with real GDP growth averaging 3.7 percent per year. Highlighting Alberta's success in the past year is:

- Over \$73.2 billion in international exports of goods and services (2004)
- Manufacturing shipments of \$52.6 billion (2004)
- Creation of 40,000 new jobs in 2004 and 433,900 between 1994 and 2004
- Over \$103 billion in major capital projects are proposed, announced, under construction or recently completed (2004)

Source: [Alberta Economic Development](#)

### **Alberta's Positive Business Climate**

- The lowest overall taxes in Canada  
No provincial sales tax
- No general capital or payroll taxes prevalent in other provinces and U.S. states
- A highly entrepreneurial and competitive business community
- A fiscally responsible government that has eliminated its provincial debt, demonstrating to investors the business-like attitude of the government
- A highly skilled, educated and motivated workforce that is the most productive in Canada.



Source: [Alberta Economic Development](#)

## **Climate**

### **AVERAGE TEMPERATURE**

#### **January**

Maximum temperature = -6.3 Celsius

Minimum temperature = -16.7 Celsius

#### **July**

Maximum temperature = 23.5 Celsius

Minimum temperature = 9.9 Celsius

Annual precipitation = 431.9 mm

Days of sunshine = 332.9

Winds speed = 14.8 km/h W and NW

Source: [Environment Canada](#)

## **Community Services**

### **BUSINESS SUPPORT SERVICES**

**Wild Rose Economic Development Corporation**

Box 2159

2nd Floor, 203 3rd Avenue  
Hilton Plaza  
Strathmore, Alberta, T1P 1K2  
1-888-881-9675  
Tel: (403) 934-6488  
Fax:(403) 934-6492  
Email: [wildrose@wildrose.ab.ca](mailto:wildrose@wildrose.ab.ca)  
Website: [www.gowildrose.com](http://www.gowildrose.com)

Services include: career center for employers and employees, small business assistance, financing and referral.

[Alberta Human Resources and Employment](#) is a provincial department that focuses on people skills and the workplace. They provide a broad range of service to both employees and employers.

[Human Resources & Skills Development Canada](#) is a federal department that provides a broad range of services for employees and employers.

### **Linden & District Agricultural Society**

The Ag Society in Linden keeps very busy with organizing events for the community. The following are some of the major events that they organize:

#### **Family Day Celebrations:**

Bring your family to participate in activities such as broom ball and ice sculpting, then enjoy a wiener roast and fireworks! The event is usually held on the Saturday prior to Family Day.

#### **Linden Fall Fair:**

Held annually on the first Saturday in November. Linden puts together a trade show with crafts, products & wares, as well as an exhibition, with a variety of categories, showcasing the local talent.

#### **Sports Day Celebrations:**

This annual event includes a pancake breakfast, parade, baseball & soccer games, children's activities, a dog show and more. Also included is a concession stand, roast beef supper and dunk tank! The activities are held the first weekend in June.

#### **Other Affiliaions**

- \* Palliser Regional Municipal Services Planning, subdivision approvals, and building permit approvals
- \* Big Country Tourist Association
- \* Kneehill Regional Family & Community Support Services
- \* Drumheller & District Solid Waste Management
- \* Marigold Library System
- \* Kneehill Housing Corporations

## **Community Lifestyle**

### **RECREATION**

Linden offers the following recreational services. For more information please contact our Village office.

You and your family will enjoy the natural surroundings found in Linden. Explore the natural coulee, an area filled with deer, coyote, Canada Geese, herons and wild flowers, and discover the many things to do in and around the community.

#### **Playground/Parks**



These treed areas are a relaxing place to enjoy the afternoon. Come have a picnic, bring the

children to the playground or just enjoy the scenery. There are four playground/parks located throughout the village.

### **Tennis Courts**

Open spring until fall, with no fees.

### **Baseball Diamonds**

Batter up! Grab your bat and glove, and head on out for a game of ball! Linden, in conjunction with the neighboring Village of Acme, runs a Minor Baseball Association. We are proud of our teams who have won Provincials at various age levels many times. It accommodates people of all ages from Minors to Senior's Slow Pitch.

Contacts:

Minor League: Kurt Leinweber at (403) 546-2371

Senior's Slow Pitch: Don Loewen at (403) 546-4457

Men's Recreation League: Darwyn Moon at (403) 546-2196

### **Coulee Park**



Need a place to unwind? Come take a walk along the red shale paths surrounding the natural coulee and dams; go fishing for trout in a stocked pond, have a BBQ or camp at the Coulee Campground. Whatever you decide to do, the tree lined area and natural wildlife is something that you will enjoy.

### **Soccer Field**

Linden is very proud of their soccer achievements. Be prepared to have some good competition. Every year Linden soccer teams head to provincials and they are known for being one of the hardest teams to beat.

For information on leagues contact:

Hugh Kung at (403) 546-3916

### **Seniors' Care & Share**

Come reminisce about the "good old days" and meet other senior citizens in the community. The Care & Share is a drop in centre for senior citizens in Linden and area. Come have a game of pool, play some cards or just visit with other senior citizens.

Every third Thursday of the month a potluck supper is held at 5:30 PM.

Included in the Centre:

Pool table, shuffleboard and kitchen.

Drop in Times:

\* Tuesdays from 10 AM to 12:00 PM

\* Thursdays from 2 PM to 4 PM

### **Skating Rink**

The lighted, outdoor rink is located by Dr. Elliott Community School and is well used during the winter season.

With just a 10 minute drive to the Village of Acme and 20 minutes to the Town of Three Hills, residents of Linden can enjoy the following recreational facilities:

### **GOLFING**

Enjoy golfing? Close to Linden are two golf courses.

#### **Acme & District Golf Club**

- \* 9-hole, 60-acre golf course
- \* Grass greens and water hazards
- \* Northeast of Acme
- \* Lounge, concession, & clubhouse
- \* Golf cart and club rentals
- \* Private function rental
- \* Call (403) 546-4020

#### **Three Hills Golf Club**

- \* South of the Town of Three Hills
- \* 9-Hole golf course featuring grass greens
- \* Club house, dining area and Pro Shop
- \* Open April 1 – October 31
- \* Call (403) 443-5065

### **FITNESS**

Get fit and have fun! Acme and Three Hills have a variety of facilities that will help tone your muscles.

#### **Acme Racquetball Courts**

- \* Public 1600 square foot facility.
- \* Accessible 24-hours a day with the purchase of a membership. Two courts, viewing windows, showers and change rooms.

#### **Acme Pool**

- \* Outdoor facility open May to the end of August.
- \* Tot pool, Red Cross Swim lessons, aqua size and early bird swims. Can be rented for private functions.
- \* Swim wear rental
- \* (403) 546-3017 (May-September)
- \* (403) 546-3783 (September-May)

#### **Three Hills Aquatic Centre**

- \* Indoor pool and fitness centre
- \* Race down the waterslide or exercise in the fitness room. Relax in the hot tub, sizzle in the sauna and hop into the whirlpool.
- \* Call (403) 443-2111

#### **Acme Fitness Gym**

- \* Weight and exercise equipment. Call (403) 546-3784

## **Economic Base**

### **TOURIST SITES**

#### **Country Cousins Cafe**

Drop into this famous cafe to enjoy a home cooked meal.

Country Cousin's delicious food and famous pies, such as peanut butter, have attracted visitors from outside the community. Take a day trip to try this great taste sensation. Drive on out or hop into your ultra-light and make use of the landing pad located on the east end of Linden.

- \* Call (403) 546-4444

#### **Jo-AIs**

## Country Cousins-insde

A world renowned fabric store attracting city dwellers. Quilting, sewing and craft classes are available.

\* Call (403) 546-3882

## Custom Woolen Mills Ltd.

Have you ever wondered how wool is made? Come tour the Custom Woolen Mills located approximately 15 minutes northwest of Linden. The mill is the only existing full processing plant in Western Canada and has production machines dating back to 1868. It is truly a working museum! Book a tour to zbrowse through the mill and showroom of handmade products, supplies and gift items.

\* Call (403) 337-2221

## Coulee Campground

Want to enjoy the outdoors while visiting the many unique places in and around Linden? Camp at the Coulee Campground that overlooks the coulee. Enjoy the natural scenery and wildlife.

\* Fire pits and camp kitchen

\* 6 sites at \$8.00/night (no electrical)

\* 4 sites at \$10.00/night (with electrical)

## Keivers Lake Recreation Area

Escape to the outdoors! Camp out at a large campsite, just 15 minutes northwest of Linden. The campground includes washrooms, showers, game fields and much more.

\* Call (403) 443-7308

## Royal Tyrell Museum

Approximately 45 minutes away find the world-renowned Royal Tyrell Museum featuring dinosaur and prehistoric exhibits.

# Economic Facts

## ECONOMY

Welcome to the... **"Rural Industrial Capital of Alberta"**

How can a relatively small community lay claim to this title?

Consider the following:

\* A population of over 630

\* A workforce of over 300

\* A yearly sales projection of over fifty million\*

\* An annual payroll over seven million\*

\* A highly developed manufacturing base

\* Home to agricultural based businesses such as the feed mill, dairy farm, truck & farm equipment supply, construction companies and more!

\* A diverse network of businesses meeting the needs of the farming community.

Not only does Linden offer the benefits of living in a quiet, unique rural community, the Village also offers:

\* Low cost land including commercial lots

\* Favorable tax rate

\* A pro-business Village council aimed at finding ways to attract new, diverse businesses, and at facilitating the needs of businesses and residents alike.

\* A skilled workforce and a large economic base attracting people from all over the region for employment opportunities.

\* A friendly, safe community, close enough to larger centers to access major amenities.

With all these points it is easy to see why Linden considers itself the "Industrial Capital of Alberta." For more information please contact our Village office @ 1-403-546-3888.

## Education

### Dr. Elliot Community School

A bi campus school accommodating grades K to 9. Acme students in grades 7 to 9 attend school in Linden while Linden students in grades 10 to 12 attend Acme School. Dr. Elliot shares their Home-EC and Shop facilities with Acme. Shuttle busses run daily accommodating all grade levels.

\* Call (403) 546-3863

### Acme School

Accommodates grades 1 to 6 and 10 to 12. The school offers a full educational program, preparing students for post-secondary education.

\* Call (403) 546-3845

### Private Christian Schooling

Schooling provided for the members of the Church of God in Christ.

### Mothers and Toddlers Playgroup

Meets at the Linden Alliance Church.

## Emergency Services

### Playground/Parks

Fire Department

FamilyDay1998

Family Day 1998

Sports Day Parade-98

Sports Day Parade 1998

Local volunteer emergency and fire services are located in Linden. The volunteer organization, in joint operation with the nearby Village of Acme and Kneehill County, provides fire service to the communities. Linden has a number of trained volunteer fire fighters. Contact Tony Regehr at (403) 546-3168 for more information.

## Health Care

Linden belongs to the [David Thompson Regional Health Authority](#)

**Hospital** care is available at Three Hills Health Centre

(403) 443-2444

Box 340, 1504 - 2 St. North,

Three Hills AB T0M 2A0

25 km northeast of Acme.



Three Hills Services include a 48-bed hospital, several doctors, a health unit, dental clinic, optometrist and chiropractor as well as counseling services.

## Key Contacts for Business Development

### PROVINCIAL

Richard Marz  
Member of the Legislative Assembly (MLA)  
Olds-Didsbury-Three Hills Constituency  
#639 Legislature Annex  
9718 - 107 Street  
Edmonton AB  
T5K 1E4  
Tel: 780-415-0994  
Fax: 780-415-0951

Constituency Office:  
P.O. Box 3807  
#3, 4530 - 49 Avenue  
Olds AB  
T4H 1P5  
Tel: 403-556-3132  
Fax: 403-556-3120

### FEDERAL

Myron Thompson  
Member of Parliament  
Wild Rose Constituency  
House of Commons  
Ottawa, Ontario  
K1A 0A6  
Tel: 613-996-5152  
Fax: 613-947-4601

Constituency Office:  
213 Main Street, Bay 3  
P.O. Box 3816  
Airdrie AB  
T4B 2B9  
Tel: 403-948-5103  
Fax: 403-948-0879

## Location

The Village of Linden is located in the Kneehill County No. 48.

### LONGITUDE & LATITUDE

**Longitude** - 113 degrees .28' **Latitude** - 51 degrees .36'





## ALBERTA MAP



## VILLAGE OF LINDEN LOCATION

### PROXIMITY TO OTHER LOCATIONS

| Driving Distance from Linden                    | km   | miles | Time Required        |
|---|------|-------|----------------------|
| Calgary (city centre)                           | 102  | 64    | 1 hour, 13 minutes   |
| Calgary International Airport                   | 84   | 52    | 1 hour, 4 minutes    |
| Edmonton, Alberta                               | 290  | 180   | 3 hours, 3 minutes   |
| Vancouver, British Columbia                     | 1068 | 664   | 12 hours, 25 minutes |
| Toronto, Ontario                                | 3424 | 2127  | 35 hours, 28 minutes |
| United States Border (Coutts, Alberta crossing) | 424  | 263   | 4 hours, 32 minutes  |

It is important to note that time required is calculated based on 'ideal' traffic and weather conditions.

## Post Secondary Education

### Building Futures

The Village of Linden is just minutes away from world-class education facilities. Linden's proximity to Calgary allows students the opportunity to attend post-secondary institutions with minimal travel.

For information on Educational Opportunities in close proximity to Linden visit the school's corresponding website:



| Educational Facility       | Location       | Telephone    | Web site   |
|----------------------------|----------------|--------------|--|
| University of Calgary      | Calgary, AB    | 403-220-5110 | <a href="http://www.ucalgary.ca">www.ucalgary.ca</a>     |
| University of Lethbridge   | Lethbridge, AB | 403-320-5700 | <a href="http://www.uleth.ca">www.uleth.ca</a>           |
| S.A.I.T.                   | Calgary, AB    | 403-284-7248 | <a href="http://www.sait.ab.ca">www.sait.ab.ca</a>       |
| Mount Royal College        | Calgary, AB    | 403-240-6111 | <a href="http://www.mtroyal.ab.ca">www.mtroyal.ab.ca</a> |
| AB College of Art & Design | Calgary, AB    | 403-284-7600 | <a href="http://www.acad.ab.ca">www.acad.ab.ca</a>       |
|                            |                | 403-235-     |  |

|                           |              |                |  |
|---------------------------|--------------|----------------|--|
| Devry Canada              | Calgary, AB  | 3450           | <a href="http://www.devry.ca">www.devry.ca</a>                     |
| Olds Agricultural College | Olds, AB     | 1-800-661-6537 | <a href="http://www.oldscollege.ab.ca/">www.oldscollege.ab.ca/</a> |
| Red Deer College          | Red Deer, AB | 403- 342-3300  | <a href="http://www.rdc.ab.ca/">www.rdc.ab.ca/</a>                 |

**Other Educational Opportunities** within close proximity are:

[Prairie Bible Institute](#) offers a wide range of programs, including ministry, aviation, drama, wilderness leadership and music, to students from over 20 countries around the world. Students can earn a one-year certificate or a four-year degree.

[Covenant Bible College](#) is an eight-month program of Christian discipleship. The Strathmore campus is one of three campuses, with the other two located in Colorado and Ecuador.

[Rosebud School](#) of the Arts offers a unique blend of practical and theoretical training in the performing arts. In addition to the arts program, Rosebud provides apprenticeship programs in the hospitality industry.

## Taxation

|   | <u>Residential/Farmland</u> | <u>Non-Residential</u> |
|---|-----------------------------|------------------------|
| <b>2005</b>   |                             |                        |
| Municipal Tax Rate                                  | 11.6026                     | 23.1645                |
| Education - Alberta School Foundation Fund Tax Rate | 4.4802                      | 6.9478                 |
| Seniors Lodge Accommodation Tax Rate                | .0221                       | .0221                  |

## Transportation

### HIGHWAYS

The Village of Acme is located in the Kneehill County No. 48. It is 13 km north of Beiseker and 78 km northeast of Calgary.

For manufacturers and producers who need assistance to determine the most cost-effective and efficient transportation method, AlbertaPORT provides a "virtual" gateway to assist with transportation logistics at [Alberta-Canada](#).

### AIR SERVICES

From Acme the nearest municipal airport is at Beiseker, which has a 900 meter runway and all-weather facilities.

The nearest commercial and air freight services are at [Calgary International Airport](#).

- Airport is 72 kms from Acme
- For a listing of non-stop passenger destinations visit [Passenger Non-stop Destinations](#).



### TRUCKING FIRMS

Kneehill Transport  
Hannah Transport Ltd.  
Gra-Nae Trucking Ltd

## BUS SERVICE

Regularly scheduled bus service is provided to ACME by

[Greyhound Canada](#) 

1-800-661-8747.

**Depot is located at:** NA&W Restaurant

125 Main Street, Acme

(Phone) 403 - 546-2031

## POSTAL & COURIERS

Canada Post, Purolator, UPS and FedEx all provide delivery services for the Acme area. Canada Post fills a vital need in the region providing cost-effective and timely mail delivery. In its mission to provide innovative physical and electronic delivery solutions creating value for its customers, Canada Post works with its business customers to ensure their mail communication needs are achieved. In 2001, Canada Post received an on-time, combined service performance score of 96.4% on properly prepared letter mail.



For more information on service in Acme contact:

[Canada Post](#), [Purolator](#), [UPS](#) & [FedEx](#).

Post Office

Offers full postal service, P.O. boxes, postage, parcel delivery and priority post services. Linden has a bus service running once per day north and south and is served by local and national couriers daily.

## Utilities

**ELECTRICITY** and **NATURAL GAS** are deregulated in Alberta.

The Alberta government provides a Web site to provide information to assist consumers to choose the appropriate provider for their residence or business. To learn more about electrical or natural gas providers visit [Customer Choice](#)

### Electrical Power:

[FortisAlberta](#)

[Epcor](#)

### Natural Gas:

[Direct Energy Services](#)

[Atco](#)



## COMMUNICATIONS



### Cable Television:

[Persona Communications](#)

### Telephone:

[Telus Communications](#)

### Internet Service:

[Wildrose Internet Services](#)

[Telus Communications](#)

Acme also has access to all the major radio stations from Calgary and Q91 radio station,

which broadcasts from Drumheller. Acme has access to all of the TV stations broadcasting from Calgary.

#### LOCAL/REGIONAL NEWSPAPERS

| <b>Name</b>                               | <b>Phone Number</b> | <b>Fax Number</b> |
|---|---------------------|-------------------|
| <a href="#"><u>Rocky View Weekly</u></a>  | (403) 935-4221      | (403) 935-4981    |
| <a href="#"><u>The Capital</u></a>        | (403) 443-5133      | (403) 443-7331    |
| <a href="#"><u>The Calgary Sun</u></a>    | (403) 410-1010      | (403) 250-4180    |
| <a href="#"><u>The Calgary Herald</u></a> | (403) 235-7100      | (403) 235-7379    |

Local Newspapers:

The Linden Coffee Talk, a local monthly newspaper, includes local events, advertising and trivia.

The Village of Linden produces a newsletter every second month to inform residents of activities, updates and changes.

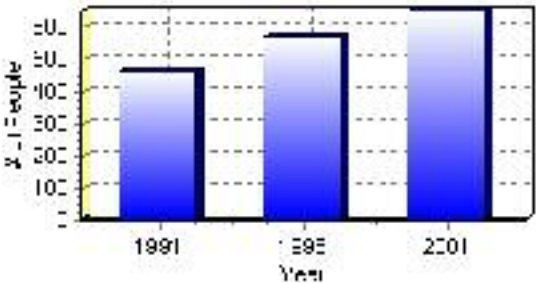
# Population

## Total Population

|                               |        |
|-------------------------------|--------|
| Population 2004*              | 649    |
| Population 2003*              | 636    |
| Population 2002*              | 636    |
| Population 2001**             | 640    |
| Population 2000*              | 630    |
| Population 1996**             | 565    |
| Population 1991**             | 461    |
| Population % change 1991-1996 | 18.41% |
| Population % change 1996-2001 | 11.16% |

\* Source: Official Population List, Alberta Municipal Affairs  
\*\* Source: Statistics Canada 1991, 1996, & 2001 Census

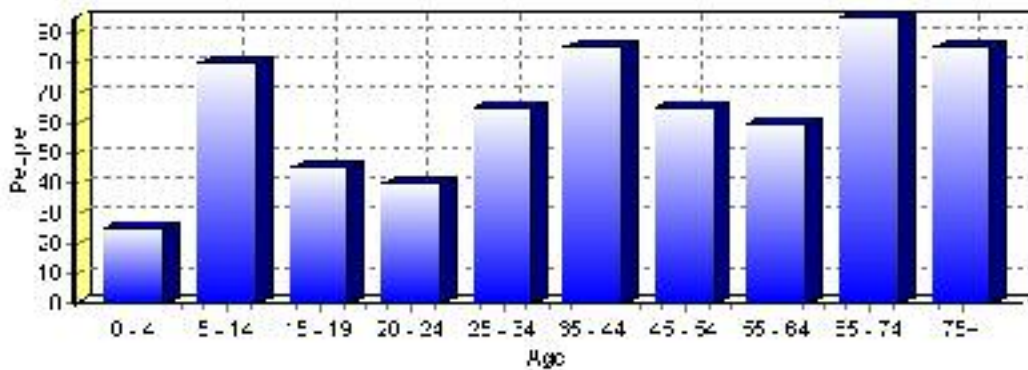
## Total Population 1991-2001



| Population by Age and Gender | 1996 Male | 1996 Female | 1996 Total | 2001 Male | 2001 Female | 2001 Total |
|------------------------------|-----------|-------------|------------|-----------|-------------|------------|
| Age 0 - 4                    | 15        | 15          | 30         | 15        | 10          | 25         |
| Age 5 - 14                   | 55        | 45          | 100        | 35        | 45          | 80         |
| Age 15 - 19                  | 15        | 20          | 35         | 30        | 15          | 45         |
| Age 20 - 24                  | 10        | 15          | 25         | 20        | 20          | 40         |
| Age 25 - 34                  | 45        | 50          | 95         | 35        | 30          | 65         |
| Age 35 - 44                  | 25        | 40          | 65         | 35        | 50          | 85         |
| Age 45 - 54                  | 20        | 25          | 45         | 25        | 40          | 65         |
| Age 55 - 64                  | 25        | 30          | 55         | 30        | 30          | 60         |
| Age 65 - 74                  | 25        | 35          | 60         | 40        | 55          | 95         |
| Age 75 and older             | 25        | 35          | 60         | 40        | 45          | 85         |
| Total All Persons            | 260       | 305         | 565        | 310       | 325         | 635        |

Source: Statistics Canada 1996 & 2001 Census (numbers may not add up due to rounding)

### Linden Population by Age Group (2001)

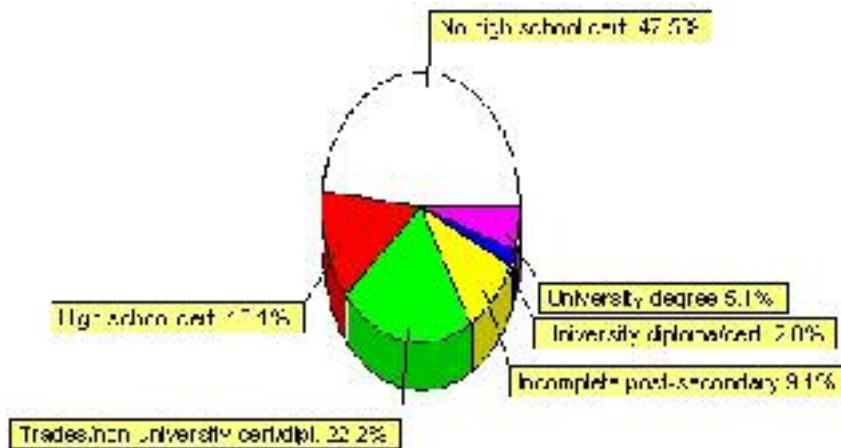


## Education Statistics

| Highest level of schooling for Population 20yrs and older   | 2001 | %       |
|---|------|---------|
| People without high school certificates                     | 235  | 47.47%  |
| People with high school certificates                        | 65   | 13.13%  |
| People with trades or non-university certificate or diploma | 110  | 22.22%  |
| People with post-secondary education (not completed)        | 45   | 9.09%   |
| People with university diploma/certificate                  | 10   | 2.02%   |
| People with university degree                               | 25   | 5.05%   |
| Total Population 20 years and older                         | 495  | 100.00% |

Source: Statistics Canada 2001 Census (numbers may not add up due to rounding)

### Linden Highest Level of Schooling 2001



| Population with Post Secondary Qualifications     | 1996 | %       | 2001 | %       |
|---|------|---------|------|---------|
| Agriculture and biological sciences               | 0    | 0.00%   | 0    | 0.00%   |
| Commerce, management and business administration  | 15   | 13.04%  | 10   | 6.67%   |
| Educational, recreational and counseling services | 15   | 13.04%  | 15   | 10.00%  |
| Engineering and applied science tech. and trades  | 40   | 34.78%  | 40   | 26.67%  |
| Engineering and applied sciences                  | 0    | 0.00%   | 0    | 0.00%   |
| Fine and applied arts                             | 15   | 13.04%  | 0    | 0.00%   |
| Health professionals, science and technologies    | 15   | 13.04%  | 55   | 36.67%  |
| Humanities and related fields                     | 10   | 8.70%   | 10   | 6.67%   |
| Mathematics and physical sciences                 | 0    | 0.00%   | 10   | 6.67%   |
| Social sciences and related fields                | 0    | 0.00%   | 0    | 0.00%   |
| Other and/or no specialization                    | 0    | 0.00%   | 0    | 0.00%   |
| Total people with post secondary qualifications   | 115  | 100.00% | 150  | 100.00% |
| Females with post-secondary qualifications        | 45   | 39.13%  | 100  | 66.67%  |
| Males with post-secondary qualifications          | 70   | 60.87%  | 50   | 33.33%  |

Source: Statistics Canada 1996 & 2001 Census (numbers may not add up due to rounding)

## Labour Force

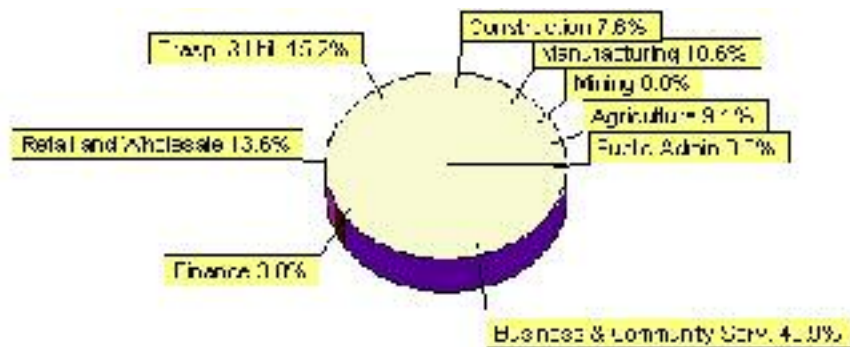
| Labour force by activity            | 1996   | 2001   |
|-------------------------------------|--------|--------|
| In the labour force, both sexes     | 245    | 330    |
| Not in the labour force, both sexes | 175    | 195    |
| Total population 15 and over        | 425    | 530    |
| Employed, both sexes                | 225    | 325    |
| Unemployed, both sexes              | 20     | 0      |
| Participation rate, both sexes      | 57.00% | 62.00% |
| Unemployment rate, both sexes       | 8.00%  | 0.00%  |

Source: Statistics Canada 1996 & 2001 Census (numbers may not add up due to rounding)

| Labour Force by Industry Division | 1996 | % of total | 2001 | % of total |
|-----------------------------------|------|------------|------|------------|
| Agriculture                       | 35   | 14.29%     | 30   | 9.09%      |
| Mining                            | 10   | 4.08%      | 0    | 0.00%      |
| Manufacturing                     | 25   | 10.20%     | 35   | 10.61%     |
| Construction                      | 10   | 4.08%      | 25   | 7.58%      |
| Transportation. & Utilities       | 30   | 12.24%     | 50   | 15.15%     |
| Retail and Wholesale              | 75   | 30.61%     | 45   | 13.64%     |
| Finance                           | 10   | 4.08%      | 10   | 3.03%      |
| Business & Community Services     | 35   | 14.29%     | 135  | 40.91%     |
| Public Administration             | 0    | 0.00%      | 0    | 0.00%      |
| Total All Industries              | 245  | 100.00%    | 330  | 100.00%    |

Source: Statistics Canada 1996 & 2001 Census (numbers may not add up due to rounding)

### Linden Labour Force By Industry - 2001



| Labour Force by Major Occupational Groups                         | 1996 | %      | 2001 | %      |
|---|------|--------|------|--------|
| Management occupations  | 10   | 4.08%  | 35   | 10.61% |
| Business, Finances and administrative occupations                 | 35   | 14.29% | 35   | 10.61% |
| Natural and applied sciences and related occupations              | 10   | 4.08%  | 0    | 0.00%  |
| Health occupations  | 10   | 4.08%  | 25   | 7.58%  |
| Occupations in social science; education; government and religion | 15   | 6.12%  | 20   | 6.06%  |
| Occupations in art; culture; recreation and sport                 | 10   | 4.08%  | 0    | 0.00%  |



|  |     |         |     |         |
|--|-----|---------|-----|---------|
| Sales and service occupations                                  | 65  | 26.53%  | 60  | 18.18%  |
| Trades; transport; equipment operators and related occupations | 50  | 20.41%  | 120 | 36.36%  |
| Occupations unique to primary industry                         | 35  | 14.29%  | 35  | 10.61%  |
| Occupations unique to processing; manufacturing and utilities  | 15  | 6.12%   | 0   | 0.00%   |
| Occupations not elsewhere classified                           | 0   | 0.00%   | 0   | 0.00%   |
| Total - All Occupations (major groups)                         | 245 | 100.00% | 330 | 100.00% |
| Females - All Occupations                                      | 105 | 42.86%  | 135 | 40.91%  |
| Males - All Occupations  | 140 | 57.14%  | 190 | 57.58%  |

Source: Statistics Canada 1996 & 2001 Census (numbers may not add up due to rounding)

---

## Income

| <b>Family Income (Number of Families)</b> | <b>1996</b> | <b>%</b> | <b>2001</b> | <b>%</b> |
|---|-------------|----------|-------------|----------|
| less than \$19,999                        | 15          | 9.68%    | 30          | 20.00%   |
| \$20,000 - \$39,999                       | 100         | 64.52%   | 60          | 40.00%   |
| \$40,000 - \$59,999                       | 20          | 12.90%   | 55          | 36.67%   |
| \$60,000 and over                         | 20          | 12.90%   | 20          | 13.33%   |
| Total number of families                  | 155         | 100.00%  | 165         | 110.00%  |
| Average family income                     | \$39,883    |          | \$42,129    |          |
| Median family income                      | \$30,691    |          | \$40,737    |          |

Source: Statistics Canada 1996 & 2001 Census (numbers may not add up due to rounding)

| <b>Household Income (Number of Households)</b> | <b>1996</b> | <b>%</b> | <b>2001</b> | <b>%</b> |
|--|-------------|----------|-------------|----------|
| less than \$19,999                             | 60          | 26.09%   | 85          | 30.36%   |
| \$20,000 - \$39,999                            | 115         | 50.00%   | 90          | 32.14%   |
| \$40,000 - \$59,999                            | 20          | 8.70%    | 60          | 21.43%   |
| \$60,000 and over                              | 10          | 4.35%    | 45          | 16.07%   |
| Total number of households                     | 230         | 100.00%  | 280         | 100.00%  |
| Average household income                       | \$32,801    |          | \$35,892    |          |
| Median household income                        | \$23,806    |          | \$28,883    |          |

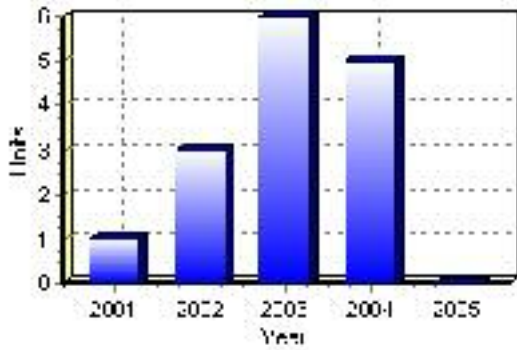
Source: Statistics Canada 1996 & 2001 Census (numbers may not add up due to rounding)

# Building Permits

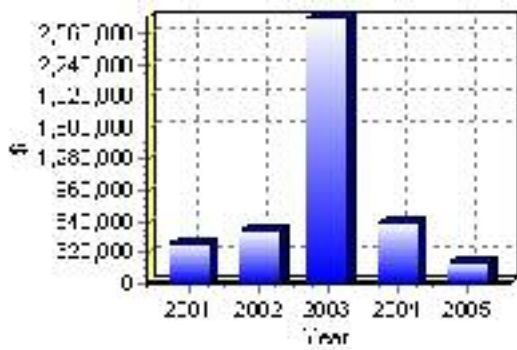
| Total Building Permit Values          | 2001      | 2002      | 2003        | 2004      | 2005      |
|---------------------------------------|-----------|-----------|-------------|-----------|-----------|
| Building Permits Value, Commercial    | \$230,000 | \$73,000  | \$434,000   | \$9,000   | \$122,000 |
| Building Permits Value, Industrial    | \$0       | \$0       | \$30,000    | \$20,000  | \$37,000  |
| Building Permits Value, Institutional | \$0       | \$2,000   | \$1,496,000 | \$0       | \$0       |
| Building Permits Value, Residential   | \$174,000 | \$464,000 | \$762,000   | \$577,000 | \$40,000  |
| Building Permits Value, Total         | \$404,000 | \$539,000 | \$2,722,000 | \$606,000 | \$199,000 |
| Total Housing Starts                  | 1         | 3         | 6           | 5         | 0         |

Source: Statistics Canada 2000-2004 Building Permits (numbers may not add up due to rounding)

## Total Housing Starts



## Value of Building Permits



## Dwellings

| <b>Occupied Private Dwellings by Type</b>  | <b>1996</b> | <b>% of total</b> | <b>2001</b> | <b>% of total</b> |
|--|-------------|-------------------|-------------|-------------------|
| Apartments                                 | 20          | 8.70%             | 40          | 14.55%            |
| Detached Duplexes                          | 0           | 0.00%             | 0           | 0.00%             |
| Movable Dwellings                          | 45          | 19.57%            | 55          | 20.00%            |
| Other single attached house                | 0           | 0.00%             | 0           | 0.00%             |
| Row and semi-detached house                | 0           | 0.00%             | 15          | 5.45%             |
| Single-detached house                      | 160         | 69.57%            | 160         | 58.18%            |
| Total number of occupied private dwellings | 230         | 100.00%           | 275         | 100.00%           |
| Private dwellings, owned                   | 195         | 84.78%            | 210         | 76.36%            |
| Private Dwellings, rented                  | 35          | 15.22%            | 65          | 23.64%            |

Source: Statistics Canada 1996 & 2001 Census (numbers may not add up due to rounding)

| <b>Private Dwellings by Period of Construction</b> | <b># of Dwellings</b> | <b>% of total</b> |
|--|-----------------------|-------------------|
| Period of construction, before 1946                | 25                    | 9.09%             |
| Period of construction, 1946 - 1960                | 35                    | 12.73%            |
| Period of construction, 1961 - 1970                | 35                    | 12.73%            |
| Period of construction, 1971 - 1980                | 65                    | 23.64%            |
| Period of construction, 1981 - 1990                | 15                    | 5.45%             |
| Period of construction, 1991 - 2001                | 100                   | 36.36%            |
| Total number of private dwellings constructed      | 275                   | 100.00%           |

Source: Statistics Canada 2001 Census (numbers may not add up due to rounding)

Disclaimer: Information in this profile has been provided from a variety of external sources. Although every effort has been made to ensure the accuracy, currency and reliability of the content and data, AlbertaFirst.com Ltd. accepts no responsibility in this regard.

© AlbertaFirst.com Ltd., 2006.