

Stavely

www.stavely.ca

Welcome

Welcome to Stavely!

We're known for our friendliness, community spirit and as the home of the first indoor rodeo in Canada. Come pay us a visit !



The Spirit of Stavely

Area Overview

Stavely is a thriving town of approximately 445 residents, located about halfway between Calgary and Lethbridge on Highway 2. Situated in what Stavelyites like to think of as Alberta's "Banana Belt", it is an ideal ranching and farming area with rolling prairies to the east and foothills to the west.

The Town was named for Alexander Staveley Hill, Managing Director of the Oxley Ranching Company which was formed in 1882. With the influx of settlers, the box-car stop and tent-town progressed to the status of Town in 1912.

Although small in numbers, Stavely has won recognition for its quality and quantity of grains and livestock, for the beauty of the Willow Creek, Pine Coulee Reservoir, Clear Lake and Chain Lakes recreational facilities, and its successes in sports. But mostly, Stavelyites are proud of their friendliness and community spirit.

Community Services

Municipal:

- Municipality
- Municipal Library
- Public Works

Provincial:

- Recreation and Parks
- Transportation

Federal:

- Canada Post
- Agriculture and Agri-Food Canada

Community Lifestyle

Recreation:

Local recreation facilities include a skating rink and arena, library, playgrounds, trap shooting, archery lanes, baseball diamonds, golf, a gymnasium, R.V. Park, and a museum. The nearby Pine Coulee Reservoir offers a five-mile lake on which to enjoy boating, waterskiing, fishing or just a nice picnic in the summer sun.

Willow Creek Provincial Park is located 6 km west and 8 km southwest of Stavely. The Park is open from May through September, and has 150 random sites.

Community Organizations:

- B.P.O. Elks Lodge
- Rebekah Lodge
- Agricultural Society
- Youth Society
- Senior Citizens' Drop-In
- Royal Purple Lodge
- Oddfellows Lodge
- Rodeo Association
- Masons Lodge
- Pine Coulee Clear Lake Recreation Board
- Community Chest
- Archery Club
- Figure Skating Club
- 4H Horse Club
- 4H Beef Club
- Golf Club
- Minor Hockey
- Museum Society
- Local Initiatives Society
- Historical Society

Religious Services:

- There is a local United Church, and several denominations operate from nearby Claresholm and Nanton.

Special Annual Events/Attractions:

- Stavely Indoor CRRRA Rodeo -- 1st weekend in May
- Stavely Horse Show and Amateur Rodeo -- last Saturday of August
- Willow Creek Gathering [Cowboy Poetry and Music] -- July 10 & 11

Hospitality:

Accommodation:

- Stavely Hotel

Restaurants:

- Stavely Hotel Restaurant
- Midge's Restaurant

Economic Base

The economic base of the Stavely region is agriculture. Resources available locally include beef, hay, grain and natural gas. Products include wooden doors, recycled rubber products and modular homes.

Economic Facts

Company

- K C Manufacturing
- Pro-Tech Rubber Manufacturing
- Ponderosa Homes Inc.

Product

- Cabinet Doors
- Recycled rubber products
- Modular homes

Financial Institutions:

- ATB Financial

Education

Stavely is part of the Livingstone Range School District #68. District School Board offices are located in Claresholm [Tel: 403-625-3356].

Daycare/Nursery:

- There is a local playschool.

Public:

- The Stavely School provides education for Grades K to 6. Junior and Senior high school students attend schools in Claresholm or Nanton.

Separate:

- N/A

Private:

- N/A

Emergency Services

All Services are accessible by dialing 911.

Fire Protection:

- Stavely is served by a volunteer fire department.

Police Services:

- Stavely is served by the Claresholm detachment of the Royal Canadian Mounted Police [RCMP].

Ambulance Services:

- Ambulance service is provided from Claresholm.

Health Care

The Claresholm General Hospital, located 14.4 km south of Stavely in Claresholm, provides modern care in its 50-bed hospital while a new 100-bed auxiliary hospital and nursing home provides for long-term and restorative treatment.

Key Contacts for Business Development

Municipal:

Town of Stavely
Box 249
Stavely, Alberta
T0L 1Z0
Tel: 403-549-3761
Fax: 403-549-3743
eMail: stavely@telusplanet.net

Barry Johnson [Mayor]
Sheryl Fath [Municipal Administrator]

Provincial

Regional Manager
Alberta Economic Development
105, 200 -5th Avenue South
Lethbridge, Alberta
T1J 4L1
Tel: 403-381-5414
Fax: 403-381-5741

Honourable David Coumts (PC)
Member of the Legislative Assembly [MLA]
Livingstone-Macleod Constituency

Constituency Office
P.O. Box 69
2115 - 2nd Avenue
Fort Macleod, AB
T0L 0Z0
Phone: (403) 553-2400
Toll Free: 1-800-565-0962
Fax: (403) 553-2133
livingstone.macleod@assembly.ab.ca

Legislature Office
#420 Legislature Building
10800 - 97 Avenue
Edmonton, AB
T5K 2B6
Phone: (780) 415-4815
Fax: (780) 415-4818

Federal

Macleod, Alberta
MENZIES, Ted (Conservative)

Parliamentary Address

House of Commons
Ottawa, Ontario
K1A 0A6
Telephone: (613) 995-8471
Fax: (613) 996-9770
E-Mail: Menzies.T@parl.gc.ca

Constituency Address

4925 1st Street West, P.O. Box 40
Claresholm, Alberta
T0L 0T0
Telephone: (403) 625-5532 1-866-636-9437
Fax: (403) 625-5592
TTY:
E-Mail: menziest@telus.net

Location

The Town of Stavely is located in the Municipal District of Willow Creek #26, in southern Alberta. It is 104 km south of Calgary, 104 km northwest of Lethbridge, and 14.4 km north of Claresholm.

Post Secondary Education

Post-secondary education is available in Lethbridge and Calgary.

Taxation

	<u>Residential/Farmland</u>	<u>Non-Residential</u>
2005		
Municipal Tax Rate	11.1470	11.1470
Education - Alberta School Foundation Fund Tax Rate	4.9510	7.0330
Seniors Lodge Accommodation Tax Rate	.3180	.3180
<u>Classification</u>	<u>2003 Mill Rate</u>	
Residential-Public	15.994	
Residential-Separate	N/A	

Non-Residential-Public
Non-Residential-Separate

18.224
N/A

Transportation

Highways:

- Stavelly is located on Highway #2.

Air Service:

- The nearest airport is the Claresholm Industrial Airport, where the longest runway is 930 metres. Commercial and freight services are available at airports in Calgary and Lethbridge.

Trucking Firms:

- Pedersen Cartage & Storage. Warehouse facilities are available at Claresholm, 14.5 km south of Stavelly.

Bus Services:

Regularly scheduled inter-community bus service is available from Claresholm or Nanton.

Couriers and Taxis:

- N/A

Rail Service:

- N / A

Utilities

Electrical Power:

- Aquila [Tel: 310-9473]

Natural Gas:

- Atco Gas [Tel: 310-5678]

Telephone and Internet:

- Telus [Tel: 310-2255]

Water Supply:

- The source of our water is a well with reservoir capacity, measured in treated substance, of 1136 cubic metres. The design capacity is 1047 cubic metres.

Waste Management:

- Sewage treatment is provided by two short and three long detention lagoons.
- Residential garbage is collected weekly, while commercial and industrial garbage is collected bi-weekly.

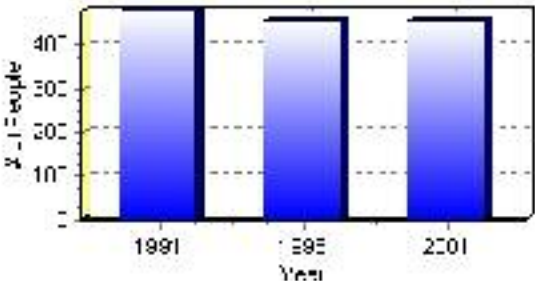
Population

Total Population

Population 2004*	455
Population 2003*	455
Population 2002*	455
Population 2001**	445
Population 2000*	513
Population 1996**	453
Population 1991**	478
Population % change 1991-1996	-5.52%
Population % change 1996-2001	0.44%

* Source: Official Population List, Alberta Municipal Affairs
** Source: Statistics Canada 1991, 1996, & 2001 Census

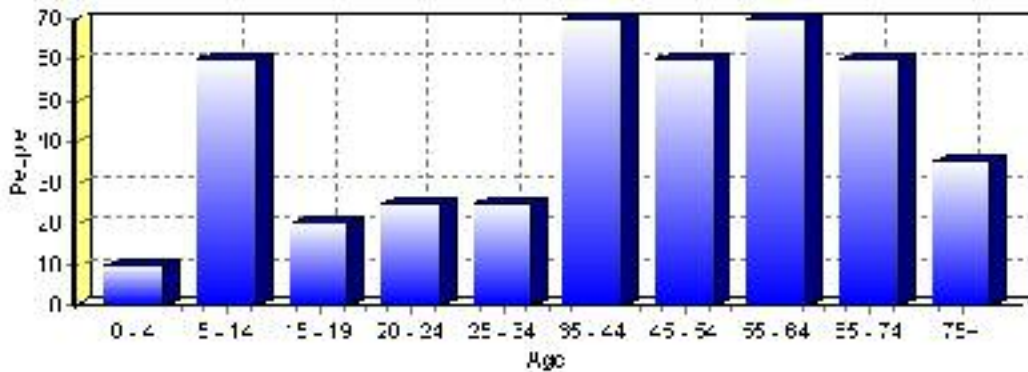
Total Population 1991-2001



Population by Age and Gender	1996 Male	1996 Female	1996 Total	2001 Male	2001 Female	2001 Total
Age 0 - 4	15	5	20	5	5	10
Age 5 - 14	35	35	70	30	30	60
Age 15 - 19	5	15	20	10	10	20
Age 20 - 24	5	0	5	10	15	25
Age 25 - 34	20	25	45	10	15	25
Age 35 - 44	35	30	65	35	35	70
Age 45 - 54	30	30	60	30	30	60
Age 55 - 64	35	35	70	35	35	70
Age 65 - 74	20	30	50	30	30	60
Age 75 and older	30	20	50	20	15	35
Total All Persons	220	235	455	220	225	445

Source: Statistics Canada 1996 & 2001 Census (numbers may not add up due to rounding)

Stavely Population by Age Group (2001)

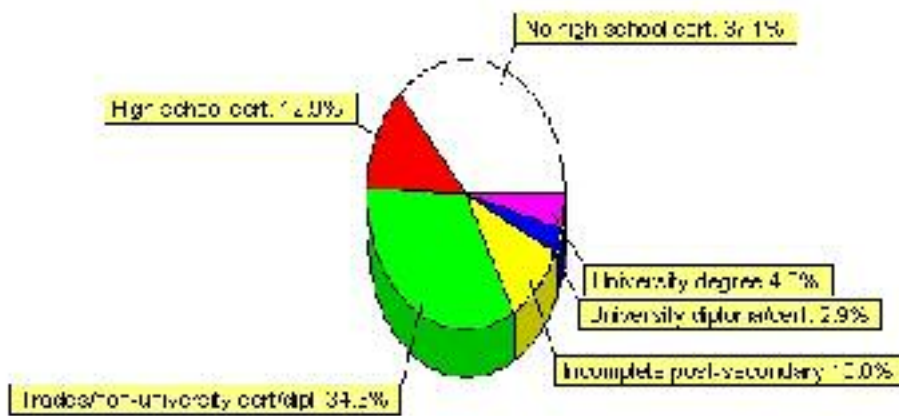


Education Statistics

Highest level of schooling for Population 20yrs and older	2001	%
People without high school certificates	130	37.14%
People with high school certificates	45	12.86%
People with trades or non-university certificate or diploma	120	34.29%
People with post-secondary education (not completed)	35	10.00%
People with university diploma/certificate	10	2.86%
People with university degree	15	4.29%
Total Population 20 years and older	350	100.00%

Source: Statistics Canada 2001 Census (numbers may not add up due to rounding)

Stavely Highest Level of Schooling 2001



Population with Post Secondary Qualifications	1996	%	2001	%
Agriculture and biological sciences	0	0.00%	10	6.67%
Commerce, management and business administration	45	47.37%	35	23.33%
Educational, recreational and counseling services	0	0.00%	35	23.33%
Engineering and applied science tech. and trades	30	31.58%	55	36.67%
Engineering and applied sciences	0	0.00%	0	0.00%
Fine and applied arts	0	0.00%	0	0.00%
Health professionals, science and technologies	0	0.00%	15	10.00%
Humanities and related fields	0	0.00%	0	0.00%
Mathematics and physical sciences	0	0.00%	0	0.00%
Social sciences and related fields	0	0.00%	10	6.67%
Other and/or no specialization	0	0.00%	0	0.00%
Total people with post secondary qualifications	95	100.00%	150	100.00%
Females with post-secondary qualifications	60	63.16%	70	46.67%
Males with post-secondary qualifications	35	36.84%	80	53.33%

Source: Statistics Canada 1996 & 2001 Census (numbers may not add up due to rounding)

Labour Force

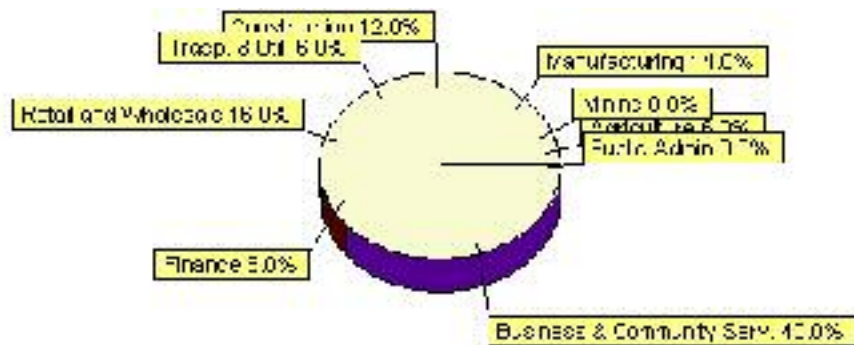
Labour force by activity	1996	2001
In the labour force, both sexes	215	250
Not in the labour force, both sexes	150	125
Total population 15 and over	365	375
Employed, both sexes	190	220
Unemployed, both sexes	20	25
Participation rate, both sexes	58.00%	67.00%
Unemployment rate, both sexes	9.00%	10.00%

Source: Statistics Canada 1996 & 2001 Census (numbers may not add up due to rounding)

Labour Force by Industry Division	1996	% of total	2001	% of total
Agriculture	25	12.82%	15	6.00%
Mining	0	0.00%	0	0.00%
Manufacturing	30	15.38%	35	14.00%
Construction	15	7.69%	30	12.00%
Transportation. & Utilities	10	5.13%	15	6.00%
Retail and Wholesale	50	25.64%	40	16.00%
Finance	10	5.13%	20	8.00%
Business & Community Services	45	23.08%	100	40.00%
Public Administration	10	5.13%	0	0.00%
Total All Industries	195	100.00%	250	100.00%

Source: Statistics Canada 1996 & 2001 Census (numbers may not add up due to rounding)

Stavely Labour Force By Industry - 2001



Labour Force by Major Occupational Groups	1996	%	2001	%
Management occupations	0	0.00%	20	8.00%
Business, Finances and administrative occupations	50	25.00%	20	8.00%
Natural and applied sciences and related occupations	0	0.00%	0	0.00%
Health occupations	0	0.00%	15	6.00%
Occupations in social science; education; government and religion	0	0.00%	0	0.00%
Occupations in art; culture; recreation and sport	20	10.00%	10	4.00%

Sales and service occupations	25	12.50%	65	26.00%
Trades; transport; equipment operators and related occupations	45	22.50%	60	24.00%
Occupations unique to primary industry	20	10.00%	20	8.00%
Occupations unique to processing; manufacturing and utilities	15	7.50%	20	8.00%
Occupations not elsewhere classified	20	10.00%	0	0.00%
Total - All Occupations (major groups)	200	100.00%	250	100.00%
Females - All Occupations	90	45.00%	120	48.00%
Males - All Occupations	110	55.00%	125	50.00%

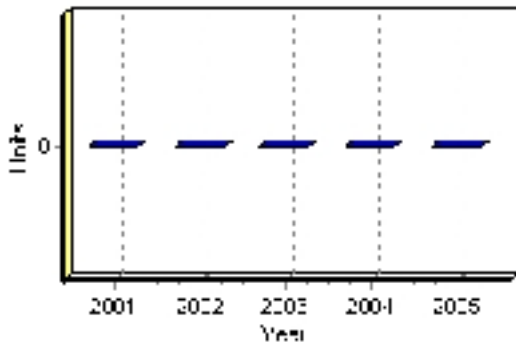
Source: Statistics Canada 1996 & 2001 Census (numbers may not add up due to rounding)

Building Permits

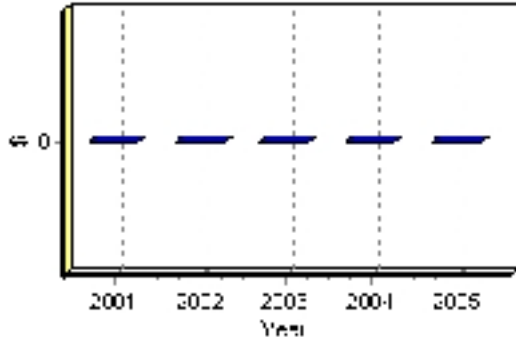
Total Building Permit Values	2001	2002	2003	2004	2005
Building Permits Value, Commercial	\$0	\$0	\$0	\$0	\$0
Building Permits Value, Industrial	\$0	\$0	\$0	\$0	\$0
Building Permits Value, Institutional	\$0	\$0	\$0	\$0	\$0
Building Permits Value, Residential	\$0	\$0	\$0	\$0	\$0
Building Permits Value, Total	\$0	\$0	\$0	\$0	\$0
Total Housing Starts	0	0	0	0	0

Source: Statistics Canada 2000-2004 Building Permits (numbers may not add up due to rounding)

Total Housing Starts



Value of Building Permits



Dwellings

Occupied Private Dwellings by Type	1996	% of total	2001	% of total
Apartments	10	5.13%	5	2.38%
Detached Duplexes	0	0.00%	0	0.00%
Movable Dwellings	40	20.51%	40	19.05%
Other single attached house	0	0.00%	0	0.00%
Row and semi-detached house	0	0.00%	5	2.38%
Single-detached house	140	71.79%	160	76.19%
Total number of occupied private dwellings	195	100.00%	210	100.00%
Private dwellings, owned	150	76.92%	170	80.95%
Private Dwellings, rented	45	23.08%	40	19.05%

Source: Statistics Canada 1996 & 2001 Census (numbers may not add up due to rounding)

Private Dwellings by Period of Construction	# of Dwellings	% of total
Period of construction, before 1946	75	35.71%
Period of construction, 1946 - 1960	10	4.76%
Period of construction, 1961 - 1970	25	11.90%
Period of construction, 1971 - 1980	70	33.33%
Period of construction, 1981 - 1990	10	4.76%
Period of construction, 1991 - 2001	20	9.52%
Total number of private dwellings constructed	210	100.00%

Source: Statistics Canada 2001 Census (numbers may not add up due to rounding)

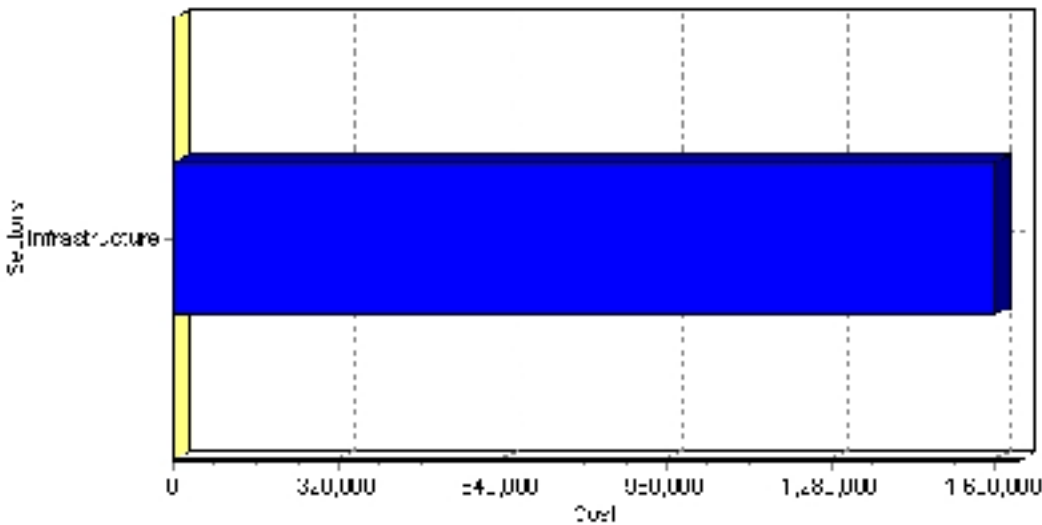
Projects

Summary of Projects in Stavely as of September 2006

Project Sector	Number of Projects	Project Cost
Infrastructure	1	\$1,600,000
Total	1	\$1,600,000

This inventory lists projects in Alberta that have recently been completed, are under construction, or are proposed to start construction. Not all projects are listed due to reasons of confidentiality and/or due to information not being available at the time of printing. Project data is obtained from public information sources, where possible, this data has been verified with the project proponent/developer, users of the Inventory may wish to confirm project data with the proponent/developer. The inventory does not breakdown project expenditures by any given year. The cost of a project is the value of expenditures expected over all phases of project construction, which may span over two or more years. Cost of projects listed in the Inventory are estimated values only. Source: Alberta Economic Development, 2004.

Value of Projects by Sector (as of September 2006)



Project Status	Number of Projects	Project Cost
Under Construction	1	\$1,600,000
Total	1	\$1,600,000

This inventory lists projects in Alberta that have recently been completed, are under construction, or are proposed to start construction. Not all projects are listed due to reasons of confidentiality and/or due to information not being available at the time of printing. Project data is obtained from public information sources, where possible, this data has been verified with the project proponent/developer, users of the Inventory may wish to confirm project data with the proponent/developer. The inventory does not breakdown project expenditures by any given year. The cost of a project is the value of expenditures expected over all phases of project construction, which may span over two or more years. Cost of projects listed in the Inventory are estimated values only. Source: Alberta Economic Development, 2004.

Largest Projects in Stavely as of September 2006

Company Name	Project Description	Project Location	Project Cost	Construction Schedule	Status
Town of Stavely	New Water Treatment Plant Including New Water Line	Stavely	\$1,600,000	2006-2006	Under Construction

Disclaimer: Information in this profile has been provided from a variety of external sources. Although every effort has been made to ensure the accuracy, currency and reliability of the content and data, AlbertaFirst.com Ltd. accepts no responsibility in this regard.

© AlbertaFirst.com Ltd., 2006.