

Special Area No. 2

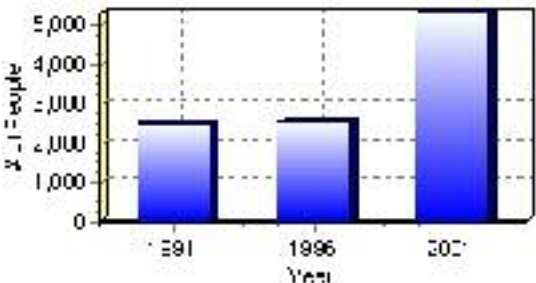
Population

Total Population

Population 2004*	5,314
Population 2003*	5,314
Population 2002*	5,314
Population 2001**	2,330
Population 2000*	1,641
Population 1996**	2,531
Population 1991**	2,490
Population % change 1991-1996	1.62%
Population % change 1996-2001	52.37%

* Source: Official Population List, Alberta Municipal Affairs
** Source: Statistics Canada 1991, 1996, & 2001 Census

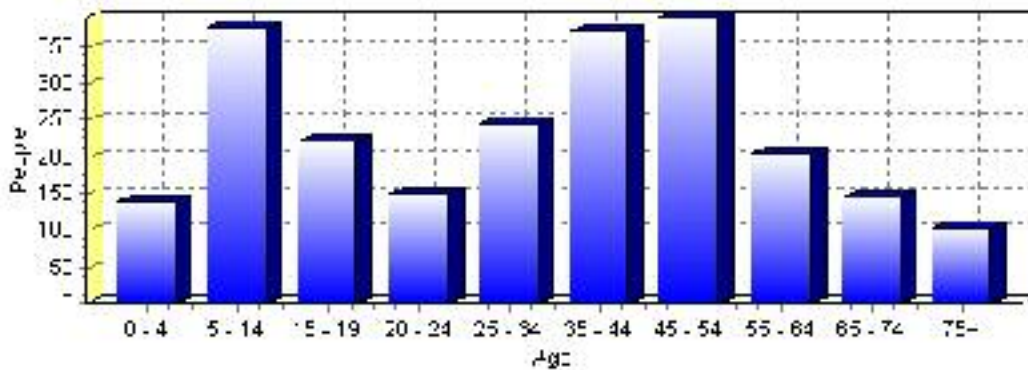
Total Population 1991-2001



Population by Age and Gender	1996 Male	1996 Female	1996 Total	2001 Male	2001 Female	2001 Total
Age 0 - 4	105	90	195	85	55	140
Age 5 - 14	205	260	465	180	195	375
Age 15 - 19	125	110	235	110	110	220
Age 20 - 24	80	75	155	85	65	150
Age 25 - 34	150	160	310	125	120	245
Age 35 - 44	240	200	440	190	180	370
Age 45 - 54	160	155	315	205	185	390
Age 55 - 64	105	85	190	110	95	205
Age 65 - 74	90	60	150	85	60	145
Age 75 and older	35	40	75	55	50	105
Total All Persons	1,305	1,225	2,530	1,230	1,105	2,335

Source: Statistics Canada 1996 & 2001 Census (numbers may not add up due to rounding)

Special Area No. 2 Population by Age Group (2001)

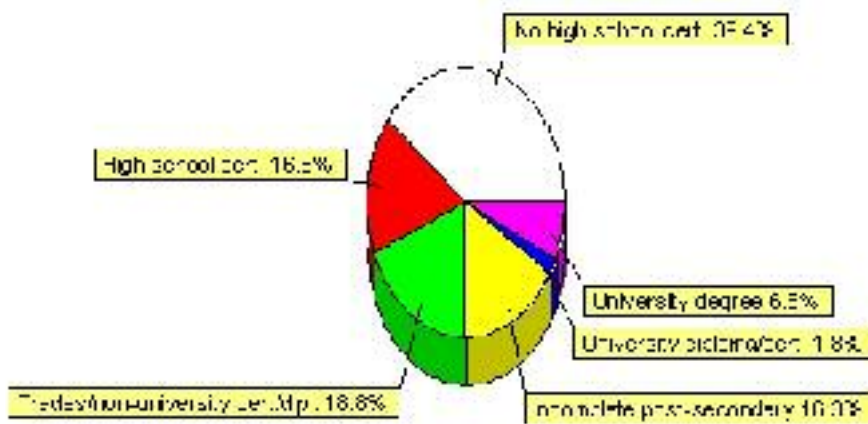


Education Statistics

Highest level of schooling for Population 20yrs and older	2001	%
People without high school certificates	640	39.38%
People with high school certificates	270	16.62%
People with trades or non-university certificate or diploma	305	18.77%
People with post-secondary education (not completed)	265	16.31%
People with university diploma/certificate	30	1.85%
People with university degree	110	6.77%
Total Population 20 years and older	1,625	100.00%

Source: Statistics Canada 2001 Census (numbers may not add up due to rounding)

Special Area No. 2 Highest Level of Schooling 2001



Population with Post Secondary Qualifications	1996	%	2001	%
Agriculture and biological sciences	50	10.20%	50	10.99%
Commerce, management and business administration	105	21.43%	100	21.98%
Educational, recreational and counseling services	75	15.31%	105	23.08%
Engineering and applied science tech. and trades	110	22.45%	110	24.18%
Engineering and applied sciences	0	0.00%	0	0.00%
Fine and applied arts	35	7.14%	0	0.00%
Health professionals, science and technologies	80	16.33%	60	13.19%
Humanities and related fields	20	4.08%	0	0.00%
Mathematics and physical sciences	10	2.04%	20	4.40%
Social sciences and related fields	0	0.00%	15	3.30%
Other and/or no specialization	0	0.00%	0	0.00%
Total people with post secondary qualifications	490	100.00%	455	100.00%
Females with post-secondary qualifications	270	55.10%	295	64.84%
Males with post-secondary qualifications	220	44.90%	160	35.16%

Source: Statistics Canada 1996 & 2001 Census (numbers may not add up due to rounding)

Labour Force

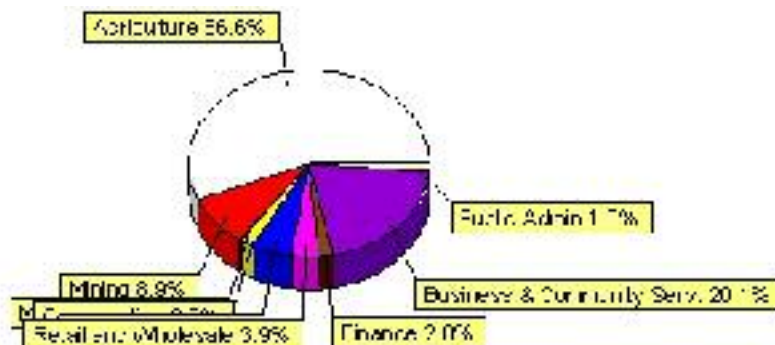
Labour force by activity	1996	2001
In the labour force, both sexes	1,485	1,520
Not in the labour force, both sexes	385	310
Total population 15 and over	1,870	1,835
Employed, both sexes	1,450	1,490
Unemployed, both sexes	30	30
Participation rate, both sexes	79.00%	83.00%
Unemployment rate, both sexes	2.00%	2.00%

Source: Statistics Canada 1996 & 2001 Census (numbers may not add up due to rounding)

Labour Force by Industry Division	1996	% of total	2001	% of total
Agriculture	830	56.08%	860	56.58%
Mining	70	4.73%	135	8.88%
Manufacturing	15	1.01%	0	0.00%
Construction	35	2.36%	30	1.97%
Transportation. & Utilities	95	6.42%	80	5.26%
Retail and Wholesale	120	8.11%	60	3.95%
Finance	10	0.68%	30	1.97%
Business & Community Services	260	17.57%	305	20.07%
Public Administration	35	2.36%	25	1.64%
Total All Industries	1,480	100.00%	1,520	100.00%

Source: Statistics Canada 1996 & 2001 Census (numbers may not add up due to rounding)

Special Area No. 2 Labour Force By Industry - 2001



Labour Force by Major Occupational Groups	1996	%	2001	%
Management occupations	50	3.37%	20	1.32%
Business, Finances and administrative occupations	125	8.42%	140	9.21%
Natural and applied sciences and related occupations	0	0.00%	20	1.32%
Health occupations	65	4.38%	35	2.30%
Occupations in social science; education; government and religion	45	3.03%	60	3.95%
Occupations in art; culture; recreation and sport	0	0.00%	25	1.64%

Sales and service occupations	225	15.15%	120	7.89%
Trades; transport; equipment operators and related occupations	160	10.77%	170	11.18%
Occupations unique to primary industry	765	51.52%	885	58.22%
Occupations unique to processing; manufacturing and utilities	45	3.03%	35	2.30%
Occupations not elsewhere classified	0	0.00%	0	0.00%
Total - All Occupations (major groups)	1,485	100.00%	1,520	100.00%
Females - All Occupations	595	40.07%	675	44.41%
Males - All Occupations	890	59.93%	850	55.92%

Source: Statistics Canada 1996 & 2001 Census (numbers may not add up due to rounding)

Income

Family Income (Number of Families)	1996	%	2001	%
less than \$19,999	50	8.93%	40	7.69%
\$20,000 - \$39,999	215	38.39%	145	27.88%
\$40,000 - \$59,999	135	24.11%	140	26.92%
\$60,000 and over	160	28.57%	190	36.54%
Total number of families	560	100.00%	515	99.04%
Average family income	\$59,401		\$63,234	
Median family income	\$43,826		\$53,869	

Source: Statistics Canada 1996 & 2001 Census (numbers may not add up due to rounding)

Household Income (Number of Households)	1996	%	2001	%
less than \$19,999	150	19.74%	60	7.89%
\$20,000 - \$39,999	255	33.55%	225	29.61%
\$40,000 - \$59,999	165	21.71%	175	23.03%
\$60,000 and over	15	1.97%	305	40.13%
Total number of households	760	100.00%	760	100.00%
Average household income	\$53,438		\$58,649	
Median household income	\$36,963		\$50,960	

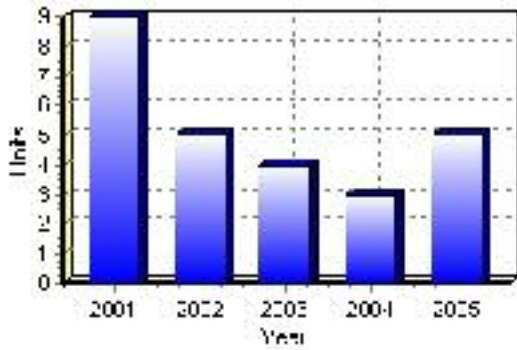
Source: Statistics Canada 1996 & 2001 Census (numbers may not add up due to rounding)

Building Permits

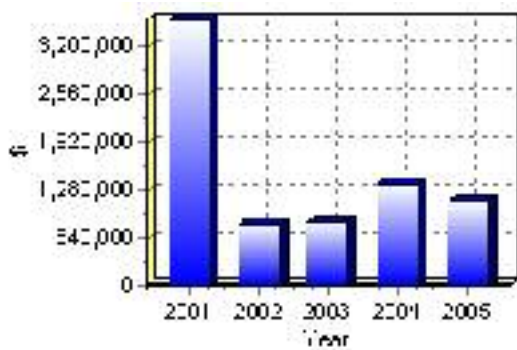
Total Building Permit Values	2001	2002	2003	2004	2005
Building Permits Value, Commercial	\$210,000	\$25,000	\$118,000	\$277,000	\$206,000
Building Permits Value, Industrial	\$2,124,000	\$131,000	\$100,000	\$428,000	\$200,000
Building Permits Value, Institutional	\$0	\$0	\$0	\$0	\$0
Building Permits Value, Residential	\$1,219,000	\$684,000	\$643,000	\$656,000	\$710,000
Building Permits Value, Total	\$3,553,000	\$840,000	\$861,000	\$1,361,000	\$1,116,000
Total Housing Starts	9	5	4	3	5

Source: Statistics Canada 2000-2004 Building Permits (numbers may not add up due to rounding)

Total Housing Starts



Value of Building Permits



Dwellings

Occupied Private Dwellings by Type	1996	% of total	2001	% of total
Apartments	0	0.00%	0	0.00%
Detached Duplexes	0	0.00%	0	0.00%
Movable Dwellings	45	5.88%	105	13.82%
Other single attached house	0	0.00%	0	0.00%
Row and semi-detached house	10	1.31%	10	1.32%
Single-detached house	705	92.16%	640	84.21%
Total number of occupied private dwellings	765	100.00%	760	100.00%
Private dwellings, owned	610	79.74%	630	82.89%
Private Dwellings, rented	150	19.61%	130	17.11%

Source: Statistics Canada 1996 & 2001 Census (numbers may not add up due to rounding)

Private Dwellings by Period of Construction	# of Dwellings	% of total
Period of construction, before 1946	195	26.00%
Period of construction, 1946 - 1960	95	12.67%
Period of construction, 1961 - 1970	70	9.33%
Period of construction, 1971 - 1980	165	22.00%
Period of construction, 1981 - 1990	130	17.33%
Period of construction, 1991 - 2001	95	12.67%
Total number of private dwellings constructed	750	100.00%

Source: Statistics Canada 2001 Census (numbers may not add up due to rounding)

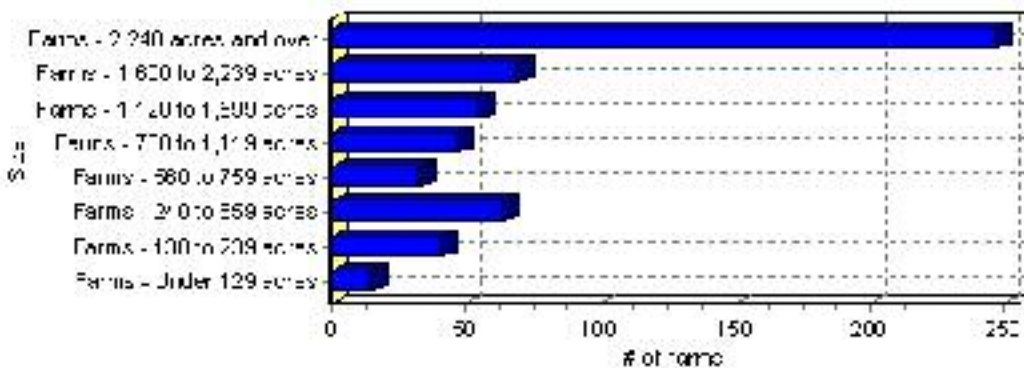
Farming

Special Area No. 2 Total Farm Area : 570 acres

Farms by Total Farm Area (2001)	# of Farms	% of total
Farms - Under 129 acres	15	2.63%
Farms - 130 to 239 acres	41	7.18%
Farms - 240 to 559 acres	64	11.21%
Farms - 560 to 759 acres	33	5.78%
Farms - 760 to 1,119 acres	47	8.23%
Farms - 1,120 to 1,599 acres	55	9.63%
Farms - 1,600 to 2,239 acres	69	12.08%
Farms - 2,240 acres and over	247	43.26%
Total number of farms reporting	571	100.00%

Source: Statistics Canada 2001 Census of Agriculture(numbers may not add up due to rounding)

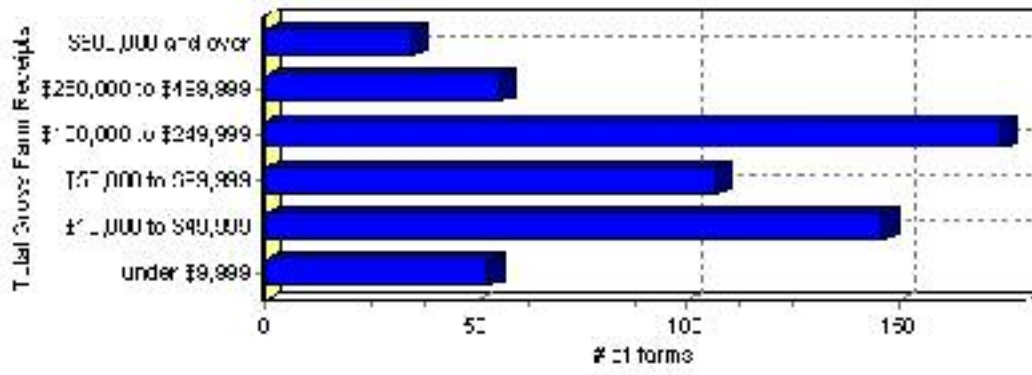
of Farms by Total Farm Area



Farms by Total Gross Farm Receipts - 2001	# of Farms	% of total
Farms gross farm receipts - under \$9,999	53	9.28%
Farms gross farm receipts - \$10,000 to \$49,999	146	25.57%
Farms gross farm receipts - \$50,000 to \$99,999	107	18.74%
Farms gross farm receipts - \$100,000 to \$249,999	174	30.47%
Farms gross farm receipts - \$250,000 to \$499,999	56	9.81%
Farms gross farm receipts - \$500,000 and over	35	6.13%
Total number of farms reporting	571	100.00%

Source: Statistics Canada 2001 Census of Agriculture(numbers may not add up due to rounding)

Total Gross Farm Receipts

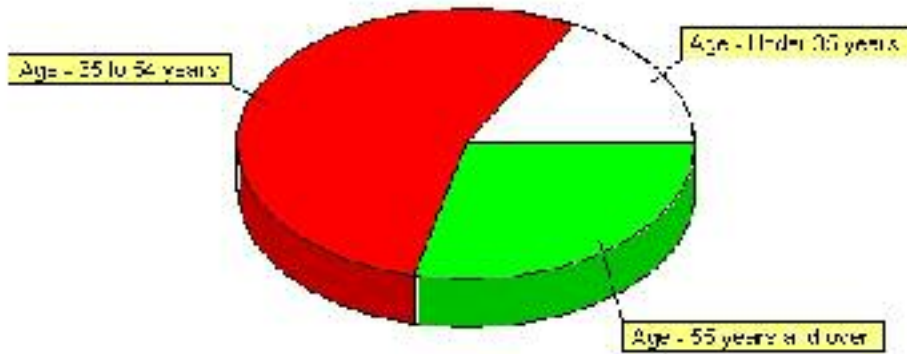


Farming, Continued

Characteristics of Farm Operators	#	%
Age - Under 35 years	135	17.20%
Age - 35 to 54 years	425	54.14%
Age - 55 years and over	225	28.66%
Average age of operators	48	
Number of operators - Female	205	26.11%
Number of operators - Male	575	73.25%
Total number of operators reporting	785	100.00%

Source: Statistics Canada 2001 Census of Agriculture (numbers may not add up due to rounding)

Age of Farm Operators



Disclaimer: Information in this profile has been provided from a variety of external sources. Although every effort has been made to ensure the accuracy, currency and reliability of the content and data, AlbertaFirst.com Ltd. accepts no responsibility in this regard.

© AlbertaFirst.com Ltd., 2006.