

# Daysland

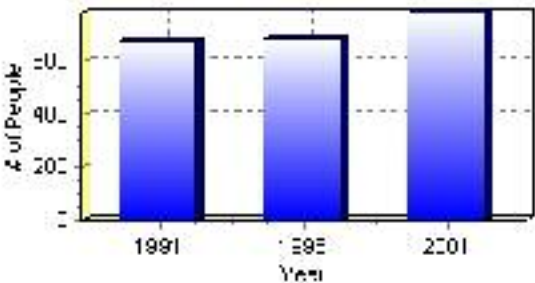
## Population

### Total Population

Population 2004*	779
Population 2003*	779
Population 2002*	779
Population 2001**	775
Population 2000*	679
Population 1996**	679
Population 1991**	674
Population % change 1991-1996	0.74%
Population % change 1996-2001	12.84%

\* Source: Official Population List, Alberta Municipal Affairs  
\*\* Source: Statistics Canada 1991, 1996, & 2001 Census

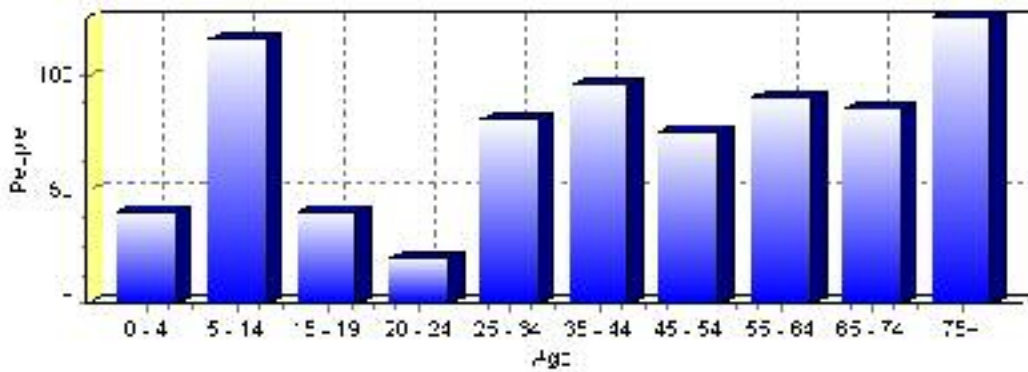
### Total Population 1991-2001



Population by Age and Gender	1996 Male	1996 Female	1996 Total	2001 Male	2001 Female	2001 Total
Age 0 - 4	15	25	40	20	20	40
Age 5 - 14	45	40	85	55	60	115
Age 15 - 19	30	25	55	20	20	40
Age 20 - 24	15	10	25	15	5	20
Age 25 - 34	35	35	70	40	40	80
Age 35 - 44	40	40	80	45	50	95
Age 45 - 54	40	40	80	35	40	75
Age 55 - 64	30	35	65	40	50	90
Age 65 - 74	40	50	90	45	40	85
Age 75 and older	30	50	80	55	70	125
Total All Persons	325	355	680	380	400	780

Source: Statistics Canada 1996 & 2001 Census (numbers may not add up due to rounding)

### Daysland Population by Age Group (2001)

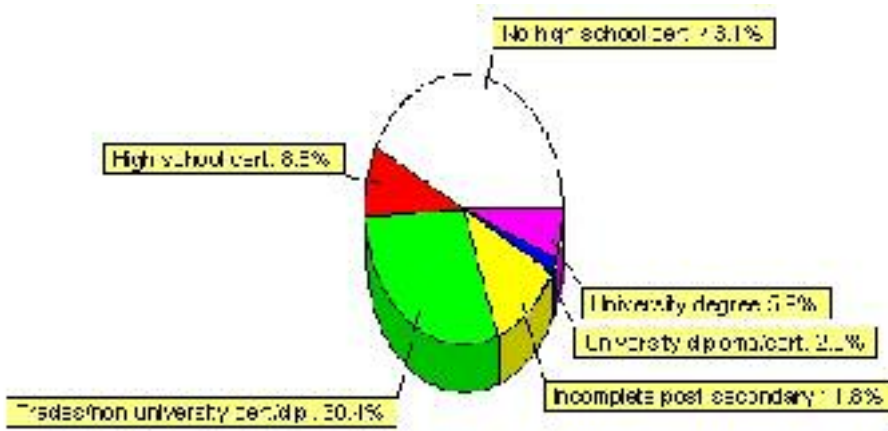


# Education Statistics

Highest level of schooling for Population 20yrs and older	2001	%
People without high school certificates	220	43.14%
People with high school certificates	45	8.82%
People with trades or non-university certificate or diploma	155	30.39%
People with post-secondary education (not completed)	60	11.76%
People with university diploma/certificate	10	1.96%
People with university degree	30	5.88%
Total Population 20 years and older	510	100.00%

Source: Statistics Canada 2001 Census (numbers may not add up due to rounding)

## Daysland Highest Level of Schooling 2001



Population with Post Secondary Qualifications	1996	%	2001	%
Agriculture and biological sciences	20	11.43%	0	0.00%
Commerce, management and business administration	40	22.86%	25	12.82%
Educational, recreational and counseling services	35	20.00%	30	15.38%
Engineering and applied science tech. and trades	35	20.00%	100	51.28%
Engineering and applied sciences	0	0.00%	0	0.00%
Fine and applied arts	10	5.71%	0	0.00%
Health professionals, science and technologies	20	11.43%	20	10.26%
Humanities and related fields	10	5.71%	0	0.00%
Mathematics and physical sciences	0	0.00%	10	5.13%
Social sciences and related fields	10	5.71%	0	0.00%
Other and/or no specialization	0	0.00%	0	0.00%
Total people with post secondary qualifications	175	100.00%	195	100.00%
Females with post-secondary qualifications	75	42.86%	70	35.90%
Males with post-secondary qualifications	100	57.14%	125	64.10%

Source: Statistics Canada 1996 & 2001 Census (numbers may not add up due to rounding)

## Labour Force

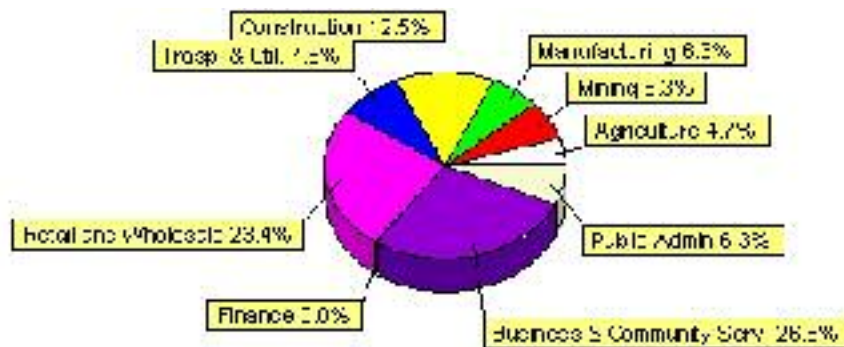
Labour force by activity	1996	2001
In the labour force, both sexes	285	315
Not in the labour force, both sexes	275	225
Total population 15 and over	560	545
Employed, both sexes	280	310
Unemployed, both sexes	0	0
Participation rate, both sexes	51.00%	58.00%
Unemployment rate, both sexes	0.00%	0.00%

Source: Statistics Canada 1996 & 2001 Census (numbers may not add up due to rounding)

Labour Force by Industry Division	1996	% of total	2001	% of total
Agriculture	20	7.02%	15	4.69%
Mining	10	3.51%	20	6.25%
Manufacturing	10	3.51%	20	6.25%
Construction	25	8.77%	40	12.50%
Transportation. & Utilities	10	3.51%	25	7.81%
Retail and Wholesale	40	14.04%	75	23.44%
Finance	35	12.28%	0	0.00%
Business & Community Services	120	42.11%	85	26.56%
Public Administration	15	5.26%	20	6.25%
Total All Industries	285	100.00%	320	100.00%

Source: Statistics Canada 1996 & 2001 Census (numbers may not add up due to rounding)

### Daysland Labour Force By Industry - 2001



Labour Force by Major Occupational Groups	1996	%	2001	%
Management occupations	20	7.14%	35	11.11%
Business, Finances and administrative occupations	65	23.21%	80	25.40%
Natural and applied sciences and related occupations	0	0.00%	0	0.00%
Health occupations	10	3.57%	10	3.17%
Occupations in social science; education; government and religion	15	5.36%	10	3.17%
Occupations in art; culture; recreation and sport	10	3.57%	0	0.00%

Sales and service occupations	80	28.57%	75	23.81%
Trades; transport; equipment operators and related occupations	35	12.50%	80	25.40%
Occupations unique to primary industry	40	14.29%	25	7.94%
Occupations unique to processing; manufacturing and utilities	15	5.36%	10	3.17%
Occupations not elsewhere classified	0	0.00%	0	0.00%
Total - All Occupations (major groups)	280	100.00%	315	100.00%
Females - All Occupations	120	42.86%	145	46.03%
Males - All Occupations	160	57.14%	175	55.56%

Source: Statistics Canada 1996 & 2001 Census (numbers may not add up due to rounding)

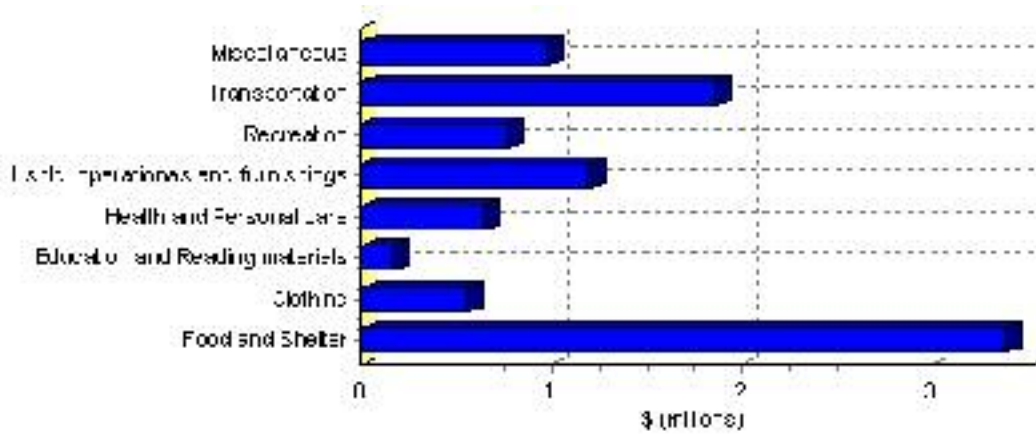
---

# Family Expenditure

Expenditure Category	1992	% of total	1996	% of total
Food and Shelter	\$3,141,145	37.57%	\$3,394,633	35.42%
Clothing	\$556,840	6.66%	\$558,855	5.83%
Education and Reading materials	\$165,205	1.98%	\$170,207	1.78%
Health and Personal care	\$523,925	6.27%	\$642,244	6.70%
Hshld. operations and furnishings	\$915,255	10.95%	\$1,198,488	12.51%
Recreation	\$654,965	7.83%	\$772,064	8.06%
Transportation	\$1,717,605	20.54%	\$1,869,338	19.51%
Miscellaneous	\$682,100	8.16%	\$977,906	10.20%
Total Current Consumption	\$8,360,580	100.00%	\$9,583,735	100.00%
Total # of Households	290		303	
Average Consumption per Household	\$28,830		\$31,629	

Source: Statistics Canada Family Expenditure Survey 1992 & 1996 (numbers may not add up due to rounding).

## Daysland Family Expenditures (1996)

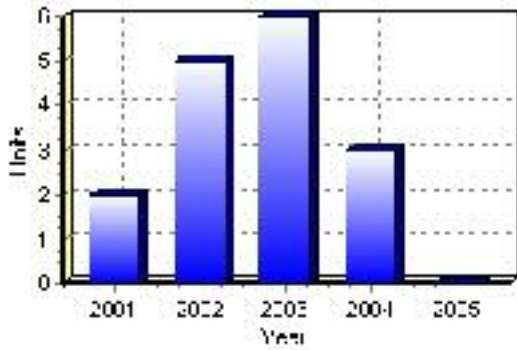


# Building Permits

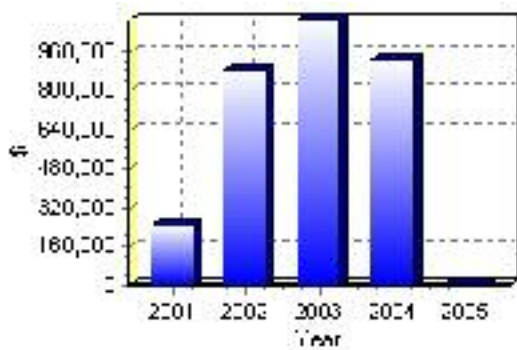
Total Building Permit Values	2001	2002	2003	2004	2005
Building Permits Value, Commercial	\$7,000	\$0	\$0	\$187,000	\$0
Building Permits Value, Industrial	\$0	\$0	\$30,000	\$0	\$0
Building Permits Value, Institutional	\$0	\$0	\$0	\$0	\$0
Building Permits Value, Residential	\$235,000	\$884,000	\$1,057,000	\$733,000	\$9,000
Building Permits Value, Total	\$242,000	\$884,000	\$1,087,000	\$920,000	\$9,000
Total Housing Starts	2	5	6	3	0

Source: Statistics Canada 2000-2004 Building Permits (numbers may not add up due to rounding)

## Total Housing Starts



## Value of Building Permits



## Dwellings

<b>Occupied Private Dwellings by Type</b>	<b>1996</b>	<b>% of total</b>	<b>2001</b>	<b>% of total</b>
Apartments	0	0.00%	5	1.64%
Detached Duplexes	0	0.00%	5	1.64%
Movable Dwellings	20	6.56%	15	4.92%
Other single attached house	0	0.00%	0	0.00%
Row and semi-detached house	20	6.56%	15	4.92%
Single-detached house	265	86.89%	265	86.89%
Total number of occupied private dwellings	305	100.00%	305	100.00%
Private dwellings, owned	260	85.25%	265	86.89%
Private Dwellings, rented	35	11.48%	40	13.11%

Source: Statistics Canada 1996 & 2001 Census (numbers may not add up due to rounding)

<b>Private Dwellings by Period of Construction</b>	<b># of Dwellings</b>	<b>% of total</b>
Period of construction, before 1946	90	30.00%
Period of construction, 1946 - 1960	45	15.00%
Period of construction, 1961 - 1970	35	11.67%
Period of construction, 1971 - 1980	35	11.67%
Period of construction, 1981 - 1990	60	20.00%
Period of construction, 1991 - 2001	35	11.67%
Total number of private dwellings constructed	300	100.00%

Source: Statistics Canada 2001 Census (numbers may not add up due to rounding)

Disclaimer: Information in this profile has been provided from a variety of external sources. Although every effort has been made to ensure the accuracy, currency and reliability of the content and data, AlbertaFirst.com Ltd. accepts no responsibility in this regard.

© AlbertaFirst.com Ltd., 2006.