

Rimbey

www.rimbey.com

Welcome

Welcome to the Town of **Rimbey**, the "*Friendly International Town*". We are a thriving community of 2,160 people, located in Central Alberta. The Town was named after the Rimbey family of Illinois. In 1901, Samuel Rimbey brought some 200 people from Kansas to settle on the northeast ridge of the beautiful Blindman River Valley. We hope the information contained within this profile is useful. If additional information is required, please contact the Town Office at (403) 843-2113.



Area Overview

Rimbey is the centre of a thriving mixed farming and oil & gas region, and is the gateway to some excellent recreational facilities. Medicine Lake is located 40 km (25 miles) northwest of the town and provides many camping amenities, as well as boating and fishing. An abundant array of wildlife offers endless hours of enjoyment for photographers and nature-lovers.

Rimbey offers a lifestyle that is the envy of many communities. The town has a very sound economy and is blessed with having most services within the community. As you walk the streets of Rimbey, you will always be greeted by a hello and a smile from those you pass by.

Community Services

Municipal

Town of Rimbey

Box 350

Rimbey, Alberta

T0C 2J0

Phone: (403) 843-2113

Fax: (403) 843-6599

E-mail: rtown@telusplanet.net

Rimbey Municipal Library

4938 - 50th Ave.

Phone: (403) 843-2841

Blindman Handivan Society

Transportation for local and out of town seniors and handicapped people. A small fee is charged for these trips. Appointments required. To contact the Blindman Handivan Society, call (403) 843-7733

Rimbey Neighbourhood Place

We provide support and direction for families who are unsure of where to turn. We work to assist persons to overcome barriers that

prevent them from reaching their goals. To contact Neighbourhood Place, call (403) 843-4304.

Family and Community Support Services

Home support and personal care services. Volunteer Programs: Meals on Wheels, Visiting, Transportation, Income Tax. Palliative Care and Seniors Information & Referral service. Food Bank, Adult Day Support, Community Kitchen, Parenting and Grief Support Groups. Medical Alert systems. Family Resource Center lending library. Information and referral to community groups. To contact FCSS, call (403) 843-2030.

Provincial

- Agriculture
- Community and Occupational Health
- Public Works, Supply and Services
- Recreation and Parks
- Transportation
- Provincial Court
- Solicitor General

Federal

Canada Post Office
Phone: (403) 843-3230

Royal Canadian Mounted Police
5117 - 50th St.
Phone: (403) 843-2224

Community Lifestyle

Recreation Services

The Town of Rimbey and the surrounding area have a full range of top quality facilities. Whatever your sport - golfing, swimming, racquetball, bowling, tennis, curling, baseball, hockey, skiing, etc. you can do it all in Rimbey! Recreational activities offer easy accessibility at very affordable rates. Or you may wish to relax and enjoy the peace and quiet of our many parks.

Rimbey is situated close to the Blindman River and within 30 minutes driving time to 4 major lakes. Camping facilities include The Nesting Place in Rimbey, Gull Lake area and Open Creek Dam.

Community Clubs

Rimbey has over 80 community groups, clubs and organizations that are involved with all aspects of social, recreational, community and religious activities. Our community spirit is evident by the success of their many projects. Some groups include the Chamber of Commerce, Kinsmen Club, 4-H Clubs, Lions/Lioness, Masons, and the Royal Canadian Legion/Legion Auxiliary. A full list of the community clubs in the Rimbey area can be found on our website at www.rimbey.com.

Religious Services

- Anglican Church of Epiphany
- Catholic Parish of St. Margaret
- Christian Reformed Church
- Church of God in Christ
- Church of Jesus Christ of Latter Day Saints
- Hoadley Evangelical Missionary Church
- Rimbey Alliance Church
- Rimbey Church of the Nazarene

- Rimbey Congregation of Jehovah's Witnesses
- Rimbey New Life Fellowship
- Rimbey United Church
- Seventh Day Adventist Church
- Zion Lutheran Church

Local Attractions

Local attractions include the Historical Pas-Ka-Poo Park and the Smithson International Truck Museum.

Special Events

Rimbey has numerous events throughout the year, including the Rimbey Rodeo in June and the Horticultural Show in August. For a complete of events, please refer to the

[Rimbey Events Calendar](#).

Accommodations

Grand Hotel

4930 - 51st St.

Phone: (403) 843-2221

Parkland Motel

4714 - 51st St.

Phone: (403) 843-2294

Rimbey Motor Inn

5117 - 50th Ave.

Phone: (403) 843-3725

Restaurants

Grand Hotel

4930 - 51st St.

Phone: (403) 843-2221

Happy Valley Restaurant

5018 - 50th Ave.

Phone: (403) 843-2133

James Grill & Bar

5030 - 50th Ave.

Phone: (403) 843-3236

Monteray Jack's

4901 - 50 St.

Phone: (403) 843-4243

Roger's Drive-In Restaurant

4717 - 50th Ave.

Phone: (403) 843-3805

Rimbey Co-op Mall Restaurant

4601 - 51st St.

Phone: (403) 843-2258

Subway

5061 - 50th Ave.

Phone: (403) 843-4825

Rimbey Bakery and Deli

4925 - 50th Ave.

Phone: (403) 843-3382

Roma Express 2 For 1 Pizza & Pasta

4905 - 51st St.

Phone: (403) 843-2228 or 843-2229

Economic Base

The economic base of the region is natural gas processing, petroleum and agriculture. Resources available locally include oil, sulphur, sand/gravel, natural gas, coal and clay.

One of the major advantages of Rimbey is its location between Red Deer and Edmonton. Rimbey has a trading area of about 8,500 people, and is a 45 minute drive to Red Deer. Excellent highway, rail, and truck transport complement Rimbey's strategic location as a place to do business.

Economic Facts

Some agricultural products produced in the Rimbey area include wheat, course grains, hay, beef cattle, poultry and hogs.

Our major businesses include Nikirk Brothers Contracting Ltd. (sand, gravel & concrete), Keyspan Energy (oil & gas), Maxus Technology Inc. (e-waste recycling) and the Rimbey Co-op Association. A full list of our businesses can be found on the Town of Rimbey webiste at www.rimbey.com.

Financial Institutions located in Rimbey include the Bank of Montreal, Community Savings and ATB Financial.

Education

Rimbey is part of the Wolf Creek Regional School Division #72, with headquarters in Ponoka.

Wolf Creek School Division #72

Phone: (403) 783-3473

Fax: (403) 783-3483

Email: info@wolfcreek.ab.ca

Website: www.wolfcreek.ab.ca

The Rimbey Nursery School offers play based programs for children 3-5 years old.

The Rimbey Montessori School House is a government approved private school for preschool to Grade 6 children.

Public schools in Rimbey include the [Rimbey Elementary School](#) (K-6), the Rimbey Junior/Senior High School (7-12) and the West Country Outreach School.

The Rimbey Christian School is a private school that offers grades E.C.S. to 12.

Emergency Services

Rimbey is served by a 20-member volunteer fire department, and has 2 pumper units, 1 water truck, and 1 rescue van. To contact the Rimbey Fire Department, call 911.

Rimbey is served by a 4-member local detachment of the Royal Canadian Mounted Police (RCMP). To contact the local RCMP, call (403) 843-2223.

Rimbey Emergency Services is a basic life support ambulance service operated through the Town of Rimbey. To contact Rimbey Emergency Services, call 911.

Health Care

Rimbey offers its residents a full range of health and support services, which are staffed by caring and supportive personnel. The Acute Care Hospital, Nursing Home, Lodges and Community Based Services fulfil the majority of the community's needs. Other medical services include 6 doctors, medical clinic, health unit, dentists, and a physiotherapy clinic.

Key Contacts for Business Development

Municipal

Town of Rimbey
Box 350
Rimbey, Alberta
T0C 2J0
Tel: (403) 843-2113
Fax: (403) 843-6599
generalinfo@rimbey.com

Dale Barr
Mayor
dale@rimbey.com

Russell Wardrope
Town Manager
russwardrope@rimbey.com

Town of Rimbey Economic Development Committee
Chair: Russell Wardrope

Provincial (Updated May 2006)

Alberta Economic Development
Allan Walkey, Regional Manager
allan.walkey@gov.ab.ca
Dale Beddoes, Information Officer
dale.beddoes@gov.ab.ca

5005 - 49 St.
Camrose, Alberta
T4V 1N5
Tel: 780-679-1235
Fax: 780-679-1250

Raymond Prins(MLA)
Ponoka-Rimbey

Constituency Constituency Office
4960B Hwy 2A
Lacombe
T4L 1J9
Phone: (403) 782-7725
Toll Free: 1-800-565-6432
Fax: (403) 782-3307

lacombe.ponoka@assembly.ab.ca

Legislature Office
#503 Legislature Building
10800-97 Avenue
Edmonton
T5K 2B6
Phone: (780) 422-3353
Fax: (780) 422-0351

Federal (Updated May 2006)
Dale Johnston
Member of Parliament [MP]
Wetaskiwin Constituency

Parliamentary Address
House of Commons
Ottawa, Ontario
K1A 0A6
Telephone: (613) 995-8886
Fax: (613) 996-9860
E-Mail: Calkins.B@parl.gc.ca

Constituency Address
6-4612 - 50th Street
Ponoka, Alberta
T4J 1S7
Telephone: (403) 783-5530
Fax: (403) 783-5532
TTY:
E-Mail: calkib1@parl.gc.ca

Location

Rimby is located in Ponoka County, at the junction of Highway 53 and Highway 20 in west central Alberta. It is 55 km northwest of Red Deer, 143 km southwest of Edmonton and 208 km north of Calgary.

Post Secondary Education

Rimby residents are within easy commuting distance from a number of post-secondary institutions, including publicly funded colleges such as:

[Red Deer College](#) in Red Deer, and [Olds College](#) in Olds as well as technical institutions such as [SAIT](#) in Calgary and [NAIT](#) in Edmonton. Universities in the region include the [University of Calgary](#) in Calgary and the [University of Alberta](#) in Edmonton.

Taxation

	<u>Residential/Farmland</u>	<u>Non-Residential</u>
2005		
Municipal Tax Rate	8.5300	10.5300
Education - Alberta School Foundation Fund Tax Rate	4.2170	6.8000
Seniors Lodge Accommodation Tax Rate	.0700	.0700

Mill Rates [2003]

Residential-Public 13.733

Residential-Separate N/A

Non-Residential-Public 18.277

Non-Residential-Separate N/A

M & E 10.611

Transportation

Air Service

Rimbey Municipal Airport has a 900 metre runway and all-weather facilities. Rimbey's airport is located at 52° 40'N 114° 14' W, a two miles from Town.

Flight planning, NOTAM and weather are available at Red Deer FSS - (403) 886-4547.

While fuel, oil, storage of aircraft and servicing are unavailable at this time, there is a telephone in the terminal, transportation, eating and accommodation facilities are available in town.

The airport is lit using a rotating beacon, lighted windsock and medium intensity on runway, taxiway and parking apron. Landing lights, dusk to dawn, are controlled by photo-electric cell or aircraft radio signal.

The nearest commercial and air freight services are at Red Deer and at Edmonton International Airport.

Rail Service

Rimbey is served by a Canadian Pacific Railway branch line. Spur trackage is available.

Highways

Connecting highways are Highway 53 and Highway 20. The Highway 2 corridor is just over 40 kilometres East of Rimbey.

Truck Lines

Rimbey Express

Phone: (403) 843-2266

Hi-Way 9 Express Ltd.

Phone: 1-800-622-5800

Vandenhoven Transport Ltd.

Phone: (403) 843-3431

Bus Services

Regularly scheduled inter-community services is available to Red Deer (daily) and Edmonton (daily).

Courier Service

Loomis and Purolator Couriers, Greyhound Courier Express

Utilities

Electrical Power

Wiring Service: FortisAlberta (Fortis Inc.)

Phone: 310-WIRE (310-9473)

Website: www.fortisalberta.com

Retail Service: EPCOR

Phone: 310-4300 (Alberta toll-free)

Website: www.epcor.ca

Retail Service: Enmax

Phone: 310-2010 (Alberta toll-free)

Website: www.enmax.com

Natural Gas

ATCO Gas

Box 978

Rimbey, Alberta

T0C 2J0

Phone: (403) 843-2474

Website: www.atcogas.com

Telephone Services

Telus Phone: 310-2255 (Alberta toll-free)

Website: www.telus.com

Water Supply

The source of water is wells. The reservoir capacity, measured in treated substance, is 2,272 cubic metres.

Waste Management

Sewage treatment is provided by a two lagoon system. The lagoon north of Town includes 4 anaerobic ponds and 3 storage ponds.

The system to the south of Town consists of an aeration system with 2 cells providing aeration and 2 storage ponds.

Disposal Residential garbage is collected once per week, while commercial and industrial garbage is collected twice per week.

The Town also runs a "clear bag" composting program from May until October for residents wishing to dispose of their grass shavings.

The Rimbey Lions Recycling Depot accepts corrugated cardboard, newsprint, office type paper and envelopes, all magazines and glossy paper, glass jars and bottles. This project is jointly operated by the Town of Rimbey and the Rimbey Lion's Club. Volunteers who wish to participate in paper sorting are welcome. Each year 160 to 170 tonnes of materials and 10 to 12 tonnes of glass are saved from landfill.

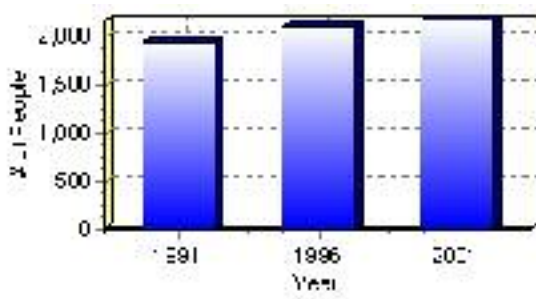
Population

Total Population

Population 2004*	2,160
Population 2003*	2,160
Population 2002*	2,118
Population 2001**	2,120
Population 2000*	2,106
Population 1996**	2,106
Population 1991**	1,937
Population % change 1991-1996	8.02%
Population % change 1996-2001	0.57%

* Source: Official Population List, Alberta Municipal Affairs
** Source: Statistics Canada 1991, 1996, & 2001 Census

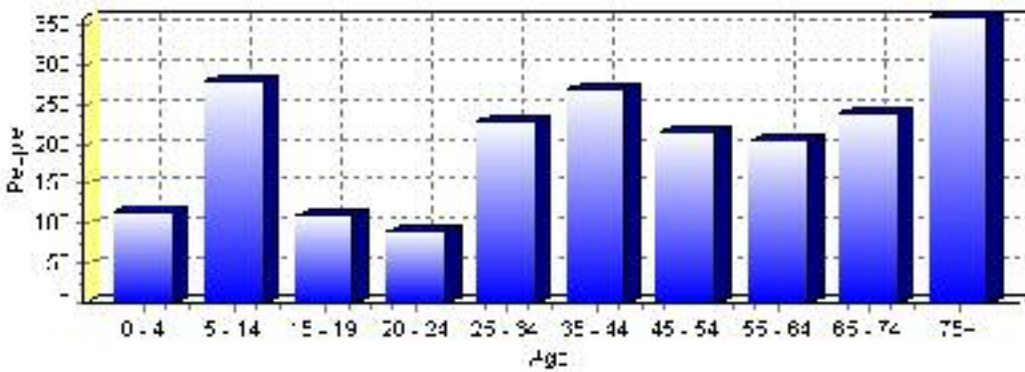
Total Population 1991-2001



Population by Age and Gender	1996 Male	1996 Female	1996 Total	2001 Male	2001 Female	2001 Total
Age 0 - 4	80	80	160	55	60	115
Age 5 - 14	120	130	250	130	150	280
Age 15 - 19	60	65	125	55	55	110
Age 20 - 24	60	65	125	40	50	90
Age 25 - 34	120	130	250	115	115	230
Age 35 - 44	115	120	235	135	135	270
Age 45 - 54	85	95	180	105	110	215
Age 55 - 64	85	105	190	80	125	205
Age 65 - 74	110	145	255	105	135	240
Age 75 and older	140	190	330	135	225	360
Total All Persons	985	1,120	2,105	965	1,150	2,115

Source: Statistics Canada 1996 & 2001 Census (numbers may not add up due to rounding)

Rimby Population by Age Group (2001)

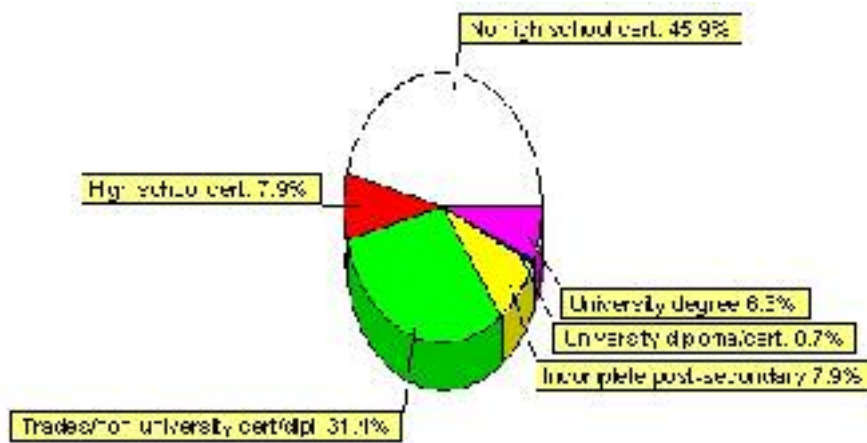


Education Statistics

Highest level of schooling for Population 20yrs and older	2001	%
People without high school certificates	695	45.87%
People with high school certificates	120	7.92%
People with trades or non-university certificate or diploma	475	31.35%
People with post-secondary education (not completed)	120	7.92%
People with university diploma/certificate	10	0.66%
People with university degree	95	6.27%
Total Population 20 years and older	1,515	100.00%

Source: Statistics Canada 2001 Census (numbers may not add up due to rounding)

Rimby Highest Level of Schooling 2001



Population with Post Secondary Qualifications	1996	%	2001	%
Agriculture and biological sciences	50	10.00%	65	11.11%
Commerce, management and business administration	40	8.00%	70	11.97%
Educational, recreational and counseling services	75	15.00%	90	15.38%
Engineering and applied science tech. and trades	150	30.00%	185	31.62%
Engineering and applied sciences	15	3.00%	10	1.71%
Fine and applied arts	40	8.00%	25	4.27%
Health professionals, science and technologies	90	18.00%	120	20.51%
Humanities and related fields	10	2.00%	10	1.71%
Mathematics and physical sciences	0	0.00%	10	1.71%
Social sciences and related fields	25	5.00%	25	4.27%
Other and/or no specialization	0	0.00%	0	0.00%
Total people with post secondary qualifications	500	100.00%	585	100.00%
Females with post-secondary qualifications	225	45.00%	290	49.57%
Males with post-secondary qualifications	275	55.00%	295	50.43%

Source: Statistics Canada 1996 & 2001 Census (numbers may not add up due to rounding)

Labour Force

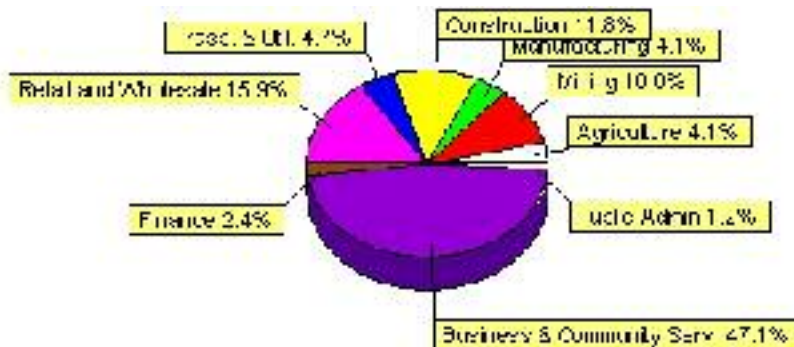
Labour force by activity	1996	2001
In the labour force, both sexes	975	850
Not in the labour force, both sexes	565	745
Total population 15 and over	1,540	1,600
Employed, both sexes	885	775
Unemployed, both sexes	90	75
Participation rate, both sexes	63.00%	53.00%
Unemployment rate, both sexes	9.00%	9.00%

Source: Statistics Canada 1996 & 2001 Census (numbers may not add up due to rounding)

Labour Force by Industry Division	1996	% of total	2001	% of total
Agriculture	45	4.62%	35	4.12%
Mining	55	5.64%	85	10.00%
Manufacturing	45	4.62%	35	4.12%
Construction	40	4.10%	100	11.76%
Transportation. & Utilities	55	5.64%	40	4.71%
Retail and Wholesale	210	21.54%	135	15.88%
Finance	15	1.54%	20	2.35%
Business & Community Services	395	40.51%	400	47.06%
Public Administration	50	5.13%	10	1.18%
Total All Industries	975	100.00%	850	100.00%

Source: Statistics Canada 1996 & 2001 Census (numbers may not add up due to rounding)

Rimby Labour Force By Industry - 2001



Labour Force by Major Occupational Groups	1996	%	2001	%
Management occupations	55	5.64%	105	12.43%
Business, Finances and administrative occupations	140	14.36%	90	10.65%
Natural and applied sciences and related occupations	30	3.08%	45	5.33%
Health occupations	55	5.64%	70	8.28%
Occupations in social science; education; government and religion	50	5.13%	50	5.92%
Occupations in art; culture; recreation and sport	55	5.64%	10	1.18%

Sales and service occupations	305	31.28%	155	18.34%
Trades; transport; equipment operators and related occupations	155	15.90%	190	22.49%
Occupations unique to primary industry	75	7.69%	85	10.06%
Occupations unique to processing; manufacturing and utilities	55	5.64%	55	6.51%
Occupations not elsewhere classified	0	0.00%	10	1.18%
Total - All Occupations (major groups)	975	100.00%	845	100.00%
Females - All Occupations	455	46.67%	365	43.20%
Males - All Occupations	520	53.33%	485	57.40%

Source: Statistics Canada 1996 & 2001 Census (numbers may not add up due to rounding)

Income

Family Income (Number of Families)	1996	%	2001	%
less than \$19,999	45	8.82%	70	14.74%
\$20,000 - \$39,999	215	42.16%	240	50.53%
\$40,000 - \$59,999	130	25.49%	120	25.26%
\$60,000 and over	120	23.53%	130	27.37%
Total number of families	510	100.00%	560	117.89%
Average family income	\$44,544		\$50,764	
Median family income	\$39,337		\$38,104	

Source: Statistics Canada 1996 & 2001 Census (numbers may not add up due to rounding)

Household Income (Number of Households)	1996	%	2001	%
less than \$19,999	270	32.34%	245	27.68%
\$20,000 - \$39,999	255	30.54%	310	35.03%
\$40,000 - \$59,999	170	20.36%	150	16.95%
\$60,000 and over	65	7.78%	170	19.21%
Total number of households	835	100.00%	885	100.00%
Average household income	\$36,123		\$41,543	
Median household income	\$28,599		\$32,911	

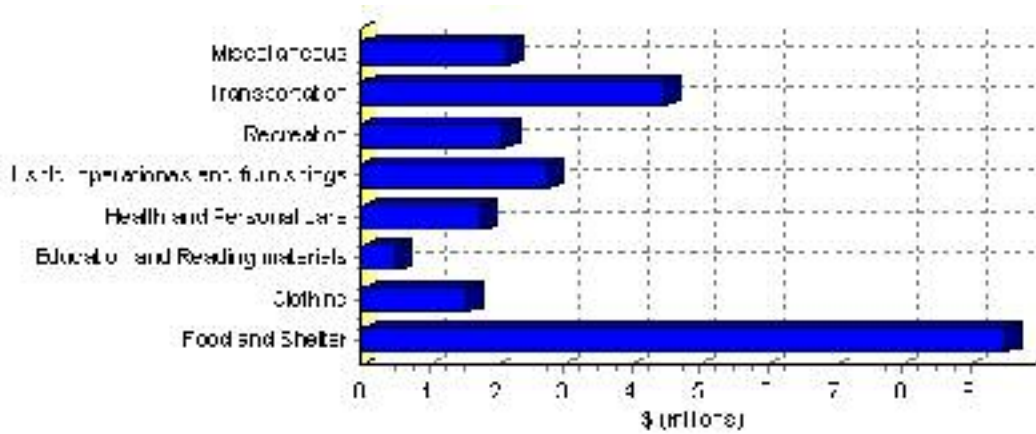
Source: Statistics Canada 1996 & 2001 Census (numbers may not add up due to rounding)

Family Expenditure

Expenditure Category	1992	% of total	1996	% of total
Food and Shelter	\$7,402,825	37.91%	\$9,527,429	38.25%
Clothing	\$1,293,305	6.62%	\$1,579,203	6.34%
Education and Reading materials	\$375,460	1.92%	\$514,563	2.07%
Health and Personal care	\$1,241,570	6.36%	\$1,762,700	7.08%
Hshld. operations and furnishings	\$2,132,840	10.92%	\$2,762,328	11.09%
Recreation	\$1,476,345	7.56%	\$2,099,527	8.43%
Transportation	\$4,017,770	20.57%	\$4,487,259	18.02%
Miscellaneous	\$1,580,380	8.09%	\$2,173,171	8.73%
Total Current Consumption	\$19,529,875	100.00%	\$24,906,180	100.00%
Total # of Households	740		838	
Average Consumption per Household	\$26,392		\$29,721	

Source: Statistics Canada Family Expenditure Survey 1992 & 1996 (numbers may not add up due to rounding).

Rimbey Family Expenditures (1996)

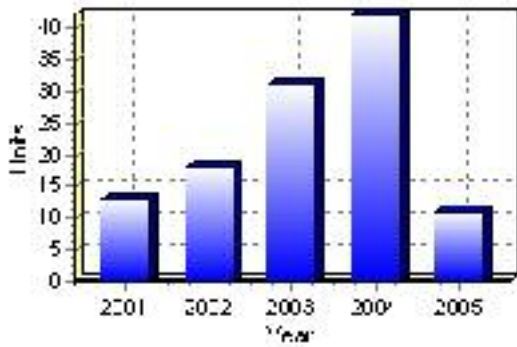


Building Permits

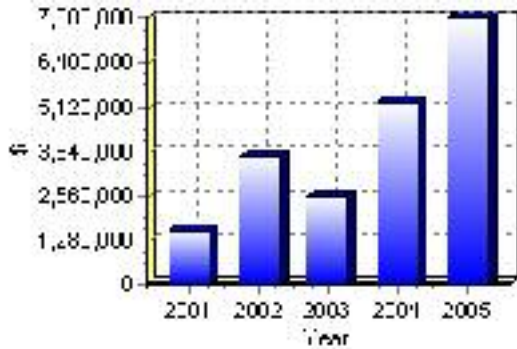
Total Building Permit Values	2001	2002	2003	2004	2005
Building Permits Value, Commercial	\$250,000	\$1,171,000	\$144,000	\$1,264,000	\$5,053,000
Building Permits Value, Industrial	\$0	\$355,000	\$0	\$0	\$0
Building Permits Value, Institutional	\$40,000	\$675,000	\$0	\$30,000	\$814,000
Building Permits Value, Residential	\$1,277,000	\$1,506,000	\$2,385,000	\$3,961,000	\$1,828,000
Building Permits Value, Total	\$1,567,000	\$3,707,000	\$2,529,000	\$5,255,000	\$7,695,000
Total Housing Starts	13	18	31	42	11

Source: Statistics Canada 2000-2004 Building Permits (numbers may not add up due to rounding)

Total Housing Starts



Value of Building Permits



Dwellings

Occupied Private Dwellings by Type	1996	% of total	2001	% of total
Apartments	90	10.71%	80	9.04%
Detached Duplexes	15	1.79%	5	0.56%
Movable Dwellings	80	9.52%	105	11.86%
Other single attached house	0	0.00%	5	0.56%
Row and semi-detached house	35	4.17%	55	6.21%
Single-detached house	620	73.81%	640	72.32%
Total number of occupied private dwellings	840	100.00%	885	100.00%
Private dwellings, owned	625	74.40%	700	79.10%
Private Dwellings, rented	215	25.60%	180	20.34%

Source: Statistics Canada 1996 & 2001 Census (numbers may not add up due to rounding)

Private Dwellings by Period of Construction	# of Dwellings	% of total
Period of construction, before 1946	65	7.30%
Period of construction, 1946 - 1960	195	21.91%
Period of construction, 1961 - 1970	145	16.29%
Period of construction, 1971 - 1980	215	24.16%
Period of construction, 1981 - 1990	145	16.29%
Period of construction, 1991 - 2001	125	14.04%
Total number of private dwellings constructed	890	100.00%

Source: Statistics Canada 2001 Census (numbers may not add up due to rounding)

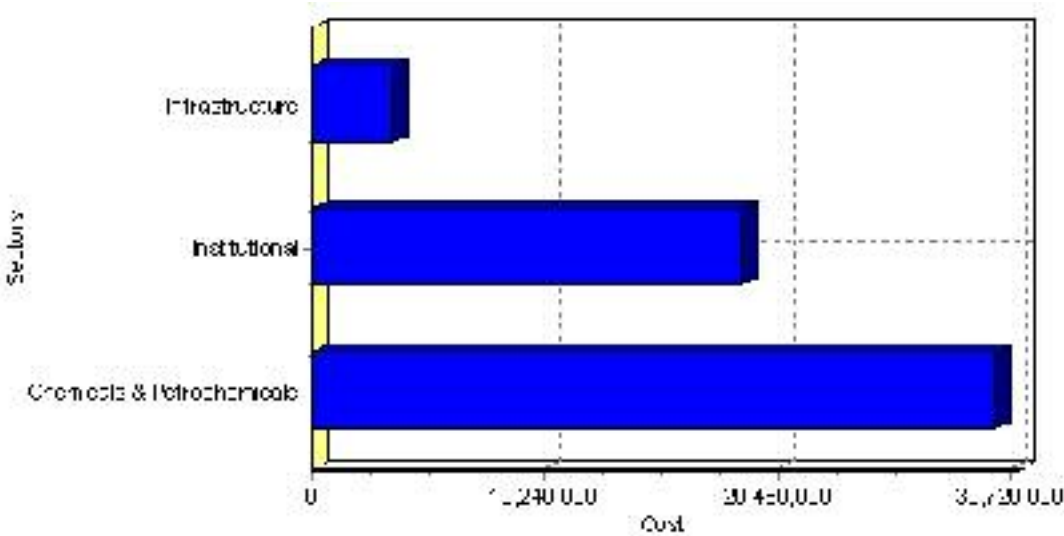
Projects

Summary of Projects in Rimbey as of September 2006

Project Sector	Number of Projects	Project Cost
Chemicals & Petrochemicals	1	\$30,000,000
Institutional	1	\$18,900,000
Infrastructure	1	\$3,500,000
Total	3	\$52,400,000

This inventory lists projects in Alberta that have recently been completed, are under construction, or are proposed to start construction. Not all projects are listed due to reasons of confidentiality and/or due to information not being available at the time of printing. Project data is obtained from public information sources, where possible, this data has been verified with the project proponent/developer, users of the Inventory may wish to confirm project data with the proponent/developer. The inventory does not breakdown project expenditures by any given year. The cost of a project is the value of expenditures expected over all phases of project construction, which may span over two or more years. Cost of projects listed in the Inventory are estimated values only. Source: Alberta Economic Development, 2004.

Value of Projects by Sector (as of September 2006)



Project Status	Number of Projects	Project Cost
Announced	1	\$18,900,000
Proposed	2	\$33,500,000
Total	3	\$52,400,000

This inventory lists projects in Alberta that have recently been completed, are under construction, or are proposed to start construction. Not all projects are listed due to reasons of confidentiality and/or due to information not being available at the time of printing. Project data is obtained from public information sources, where possible, this data has been verified with the project proponent/developer, users of the Inventory may wish to confirm project data with the proponent/developer. The inventory does not breakdown project expenditures by any given year. The cost of a project is the value of expenditures expected over all phases of project construction, which may span over two or more years. Cost of projects listed in the Inventory are estimated values only. Source: Alberta Economic Development, 2004.

Largest Projects in Rimbey as of September 2006

Company Name	Project Description	Project Location	Project Cost	Construction Schedule	Status
Town of Rimbey	Ethanol Plant	Rimbey	\$30,000,000	-	Proposed
David Thompson Health Region	New (Replacement) Hospital	Rimbey	\$18,900,000	2006-2007	Announced
Town of Rimbey	Sewer Lagoon Expansion	Rimbey	\$3,500,000	-	Proposed

Disclaimer: Information in this profile has been provided from a variety of external sources. Although every effort has been made to ensure the accuracy, currency and reliability of the content and data, AlbertaFirst.com Ltd. accepts no responsibility in this regard.

© AlbertaFirst.com Ltd., 2006.