

Chauvin

www.villagechauvin.ca

Welcome

Welcome to our community. We hope the information contained within this profile is useful. If additional information is required, please contact our representative from the "Key Contacts" section.



Above(L-R): Council Member Valerie Gramlich, Council Member Jack Goodall, Mayor Velda Nutbrown, Council Member Pamela Germain, Council Member Faye Withnell. Our council members are always ready to greet you with a pleasant smile and friendly face.



Newcomers to the Village are always greeted with a smile from Susie The World's Largest Softball.



You will always find a warm friendly greeting when you come to Chauvin.

Area Overview

Anthony Henday, the first European to enter Alberta, crossed the provincial border near the Village of Chauvin in 1594. First settlement was in 1905. The Village grew rapidly with the building of the Grand Trunk Pacific Railway [G.T.P] which reached Chauvin in 1908. The Village was named after George Von Chauvin, an engineer with the G.T.P. Incorporation took place on December 30, 1912.

The bustling community of Chauvin is situated close to the Saskatchewan border. It is surrounded by a peaceful, rolling landscape that stretches as far as the eye can see. There are many registered cattle and mixed farms in this area, as well as oilfield activity.

Community Services

Municipal

Village of Chauvin
Box 160
Chauvin, Alberta T0B 0V0
Tel: 780-858-3881
Fax: 780-858-2125
Email: vchauvin@telusplanet.net
Public Works

Provincial

N/A

Federal

N/A

Community Lifestyle

Recreation

Recreation facilities include a natural ice arena, 3-sheet, artificial ice, curling rink, a ball park with 5 softball diamonds and one

Soccer Pitch. Community clubs and organizations include the 4-H Club, Elks Club, Royal Purple, Arena Board, School Council, Recreation Board, Senior Citizens Drop-In Centre, Curling Association, Agricultural Society, Fish & Game Club, Ducks Unlimited, and the Community Hall Board.

Religious Services

- Presbyterian Church
- Sacred Heart Parish
- R.L.D.S. Church
- Chauvin Gospel Centre [Pentecostal]

Special Annual Events/Attractions

Chauvin is home of the "World's Largest Softball".

Annual Events:

- Ducks Unlimited Dinner and Auction - April
- Community Garage Sale - 1st Saturday in May
- Family day -- June

Hospitality

Accommodation

- Kings Park Campground
- Chauvin Hotel

Restaurants

- Irene's Coffee Shop



The Chauvin Museum, (formerly known as St. Aubins Catholic school) was converted into a museum in the 1980's. This historical building is full of relics depicting the past history of Chauvin. A guided tour of the facility by one of our enlightened residents is an added bonus, and can be a real treat.



Keep an eye out for our retired fire hydrants at the sports grounds.



The altar in the Sacred Heart Parish Historical Church.



Westminster Presbyterian Church

Economic Base

Chauvin's economic base is agriculture and oil. Products of the region include oil, gas, beef and dairy cattle, hogs and mixed grains.

Economic Facts

Chauvin retail outlets include a post office [Shin Foods], laundromat, car wash, liquor store, general store, service station, key lock facility, restaurant, hotel, hardware store and oilfield supply store.

- Major Businesses Products/Services
- Oilfield Maintenance and Supply
- Financial Institutions
- Credit Union
- Alberta Treasury Branch Agency

Education

Chauvin is part of the Buffalo Trail Regional School Division #28, headquartered in Wainwright [Tel: 780-842-6144].

Daycare/Nursery

Chauvin Tiny Tots Playschool

Public

Dr. Folkins Community School provides schooling for Grades K to 12. Adult courses are available through the Further Education Council.

Separate

N/A

Private

N/A

Emergency Services

Fire Protection

Chauvin is served by a volunteer fire department (Tel: 911)

Police Services

Chauvin is served by the Wainwright detachment of the Royal Canadian Mounted Police [RCMP] [Tel: 911].

Ambulance Services

Chauvin has a volunteer ambulance staff which is part of the Wainwright Ambulance [Tel: 911].

Health Care

The nearest hospitals are in Provost [50 km south] and Wainwright [60 km west]. There is a senior citizen's self-contained apartment building in Chauvin.

Key Contacts for Business Development

Municipal

Village of Chauvin
Box 160
Chauvin, Alberta T0B 0V0
Tel: 780-858-3881
Fax: 780-858-2125

Velda Nutbrown
Mayor

Betty Swanson
Administrator

Provincial (Updated December 2004)

Alberta Economic Development
Allan Walkey, Regional Manager
al.walkey@gov.ab.ca

Dale Beddoes, Client Services Representative
dale.beddoes@gov.ab.ca

5005 - 49 Street
Camrose, Alberta T4V 1N5
Telephone: 780-679-1235
Fax: 780-679-1250

Doug Griffiths
Member of the Legislative Assembly [MLA]
Wainwright Constituency
714 Legislature Annex
9718 - 107 Street
Edmonton, Alberta T5K 1E4

Tel: 780-427-3020
Fax: 780-427-1320

Federal (Updated July 2005)

Leon Benoit
Member of Parliament [MP]
Vegreville-Wainwright Constituency
Ottawa Office:
Room 613, Justice Building
111 Wellington
Ottawa, Ontario K1A 0A6
Tel: 613-992-4171
Fax: 613-996-9011
email: benoil@parl.gc.ca

Constituency Office:
PO Box 300
Mannville, AB T0B 2W0
Tel: 780-763-6130 or 1-800-463-1194
Fax: 780-763-6132
email: benoil1@parl.gc.ca

Location

The Village of Chauvin is located in the Municipal District of Wainwright No. 61. Chauvin is 275 km southeast of Edmonton and 78 km south of Lloydminster.

Post Secondary Education

Lakeland College, with campus' in Lloydminster and Vermillion, provides adult education, as well as continuing and upgrading education.

Taxation

	Residential/Farmland	Non-Residential
2005		
Municipal Tax Rate	14.593	14.593
Education - Alberta School Foundation Fund Tax Rate	4.9166	7.1767
Allowance for Non-Collection of Requisitioned Taxes	.5000	.5000
Seniors Lodge Accommodation Tax Rate	.122	.122

Mill Rates [2000] Residential - Public 20.192

Residential - Separate N/A

Non-Residential - Public 21.746

Non-Residential - Separate N/A

Transportation

Air Services

The nearest airport is at Wainwright [60 km northwest], while the nearest commercial and air freight services are at Lloydminster [76.8 km north].

Rail Services

Chauvin is served by a Canadian National Railway main line. Spur trackage is available.

Highways

Connecting highways are Highway 14, 17 and Secondary Highway 610.

Trucking Firms

- Edgerton Transport
- Bison Freightlines
- Hi-Way 13 Transport Ltd.

Bus Services

N/A

Couriers and Taxis

Checker Cabs

Loomis and Purolator Couriers

Utilities

Electrical Power

Epcor

2583-29 Street N.E.

Calgary, Alberta T1Y 7B5

Tel: 310-4300

Natural Gas

Village of Chauvin Gas Company

Village of Chauvin

Chauvin, Alberta T0B 0V0

Tel: 780-858-3881

Telephone

Telus Communications Inc.

6509 - 55 Ave.

Vegreville, Alberta T0B 4L0

Tel: 310-2255

Water Supply

3 wells service the towns water needs.

Waste Management

Sewage treatment is provided by a lagoon - 2 long and 2 short detention.

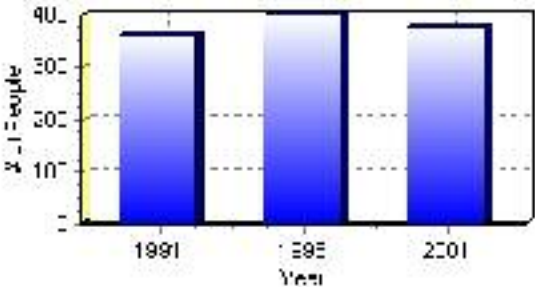
Population

Total Population

Population 2004*	378
Population 2003*	378
Population 2002*	378
Population 2001**	365
Population 2000*	400
Population 1996**	400
Population 1991**	360
Population % change 1991-1996	10.00%
Population % change 1996-2001	-5.82%

* Source: Official Population List, Alberta Municipal Affairs
** Source: Statistics Canada 1991, 1996, & 2001 Census

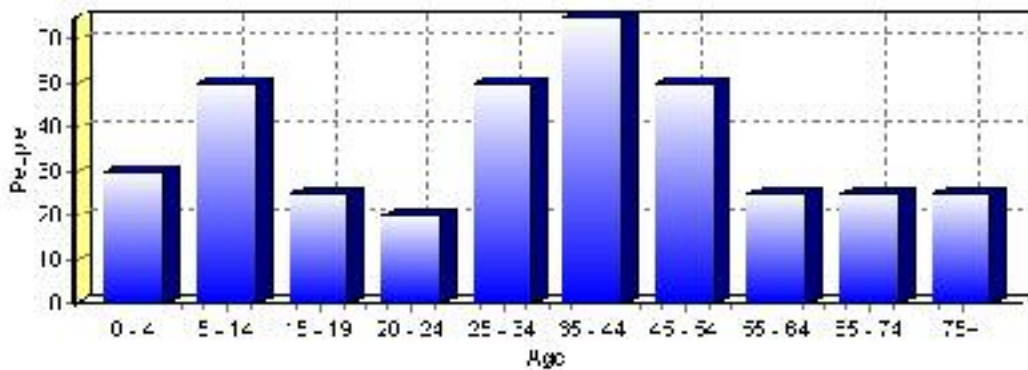
Total Population 1991-2001



Population by Age and Gender	1996 Male	1996 Female	1996 Total	2001 Male	2001 Female	2001 Total
Age 0 - 4	20	15	35	15	15	30
Age 5 - 14	30	30	60	25	25	50
Age 15 - 19	5	10	15	15	10	25
Age 20 - 24	15	15	30	10	10	20
Age 25 - 34	45	40	85	25	25	50
Age 35 - 44	25	20	45	35	30	65
Age 45 - 54	20	20	40	25	25	50
Age 55 - 64	15	10	25	10	15	25
Age 65 - 74	25	15	40	10	15	25
Age 75 and older	15	5	20	15	10	25
Total All Persons	210	195	405	190	180	370

Source: Statistics Canada 1996 & 2001 Census (numbers may not add up due to rounding)

Chauvin Population by Age Group (2001)

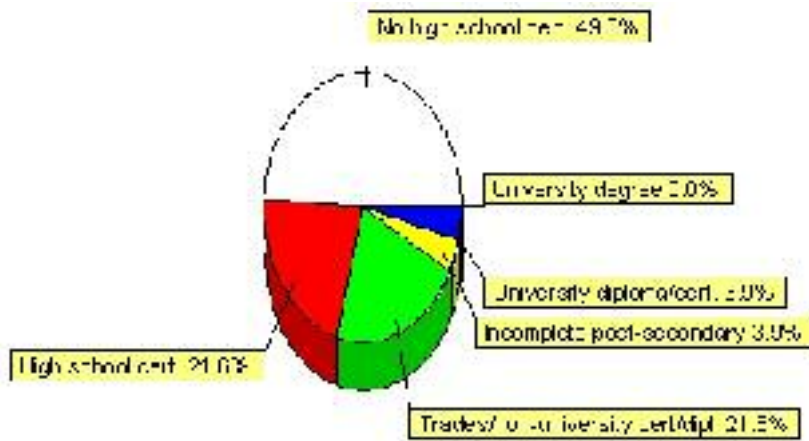


Education Statistics

Highest level of schooling for Population 20yrs and older	2001	%
People without high school certificates	125	49.02%
People with high school certificates	55	21.57%
People with trades or non-university certificate or diploma	55	21.57%
People with post-secondary education (not completed)	10	3.92%
People with university diploma/certificate	10	3.92%
People with university degree	0	0.00%
Total Population 20 years and older	255	100.00%

Source: Statistics Canada 2001 Census (numbers may not add up due to rounding)

Chauvin Highest Level of Schooling 2001



Population with Post Secondary Qualifications	1996	%	2001	%
Agriculture and biological sciences	0	0.00%	10	15.38%
Commerce, management and business administration	25	27.78%	20	30.77%
Educational, recreational and counseling services	0	0.00%	10	15.38%
Engineering and applied science tech. and trades	50	55.56%	15	23.08%
Engineering and applied sciences	0	0.00%	0	0.00%
Fine and applied arts	0	0.00%	10	15.38%
Health professionals, science and technologies	0	0.00%	10	15.38%
Humanities and related fields	10	11.11%	0	0.00%
Mathematics and physical sciences	0	0.00%	0	0.00%
Social sciences and related fields	0	0.00%	0	0.00%
Other and/or no specialization	0	0.00%	0	0.00%
Total people with post secondary qualifications	90	100.00%	65	100.00%
Females with post-secondary qualifications	35	38.89%	35	53.85%
Males with post-secondary qualifications	55	61.11%	30	46.15%

Source: Statistics Canada 1996 & 2001 Census (numbers may not add up due to rounding)

Labour Force

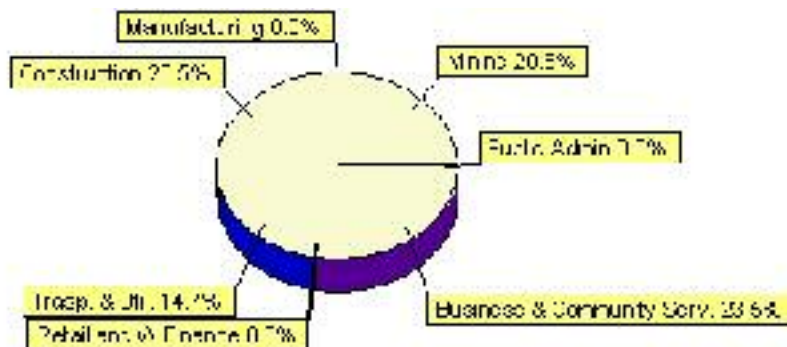
Labour force by activity	1996	2001
In the labour force, both sexes	195	175
Not in the labour force, both sexes	105	115
Total population 15 and over	305	285
Employed, both sexes	190	175
Unemployed, both sexes	10	0
Participation rate, both sexes	63.00%	61.00%
Unemployment rate, both sexes	5.00%	0.00%

Source: Statistics Canada 1996 & 2001 Census (numbers may not add up due to rounding)

Labour Force by Industry Division	1996	% of total	2001	% of total
Agriculture	10	5.00%	0	0.00%
Mining	70	35.00%	35	20.59%
Manufacturing	0	0.00%	0	0.00%
Construction	25	12.50%	40	23.53%
Transportation. & Utilities	15	7.50%	25	14.71%
Retail and Wholesale	20	10.00%	0	0.00%
Finance	0	0.00%	0	0.00%
Business & Community Services	50	25.00%	40	23.53%
Public Administration	0	0.00%	0	0.00%
Total All Industries	200	100.00%	170	100.00%

Source: Statistics Canada 1996 & 2001 Census (numbers may not add up due to rounding)

Chauvin Labour Force By Industry - 2001



Labour Force by Major Occupational Groups	1996	%	2001	%
Management occupations	20	10.26%	10	5.71%
Business, Finances and administrative occupations	20	10.26%	20	11.43%
Natural and applied sciences and related occupations	0	0.00%	0	0.00%
Health occupations	0	0.00%	0	0.00%
Occupations in social science; education; government and religion	10	5.13%	10	5.71%
Occupations in art; culture; recreation and sport	0	0.00%	0	0.00%

Sales and service occupations	50	25.64%	45	25.71%
Trades; transport; equipment operators and related occupations	35	17.95%	70	40.00%
Occupations unique to primary industry	35	17.95%	15	8.57%
Occupations unique to processing; manufacturing and utilities	35	17.95%	0	0.00%
Occupations not elsewhere classified	0	0.00%	0	0.00%
Total - All Occupations (major groups)	195	100.00%	175	100.00%
Females - All Occupations	80	41.03%	65	37.14%
Males - All Occupations	115	58.97%	105	60.00%

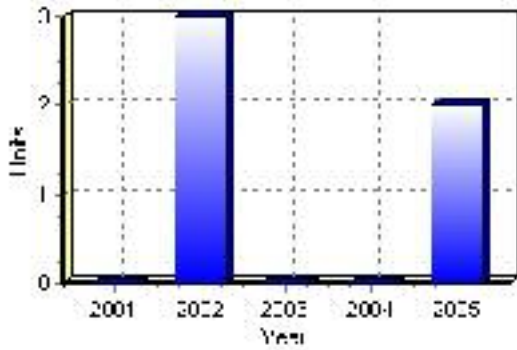
Source: Statistics Canada 1996 & 2001 Census (numbers may not add up due to rounding)

Building Permits

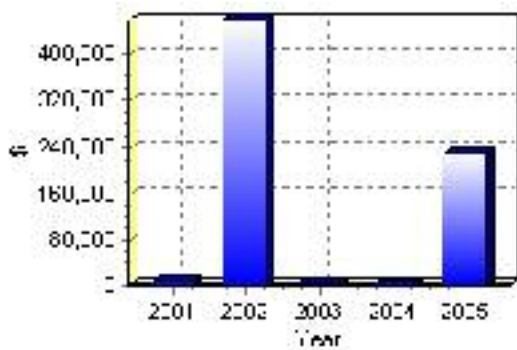
Total Building Permit Values	2001	2002	2003	2004	2005
Building Permits Value, Commercial	\$0	\$0	\$0	\$0	\$0
Building Permits Value, Industrial	\$0	\$0	\$0	\$0	\$0
Building Permits Value, Institutional	\$0	\$0	\$0	\$0	\$0
Building Permits Value, Residential	\$6,000	\$460,000	\$3,000	\$0	\$230,000
Building Permits Value, Total	\$6,000	\$460,000	\$3,000	\$0	\$230,000
Total Housing Starts	0	3	0	0	2

Source: Statistics Canada 2000-2004 Building Permits (numbers may not add up due to rounding)

Total Housing Starts



Value of Building Permits



Dwellings

Occupied Private Dwellings by Type	1996	% of total	2001	% of total
Apartments	0	0.00%	0	0.00%
Detached Duplexes	0	0.00%	0	0.00%
Movable Dwellings	30	20.00%	30	20.69%
Other single attached house	0	0.00%	0	0.00%
Row and semi-detached house	0	0.00%	5	3.45%
Single-detached house	115	76.67%	115	79.31%
Total number of occupied private dwellings	150	100.00%	145	100.00%
Private dwellings, owned	120	80.00%	125	86.21%
Private Dwellings, rented	30	20.00%	20	13.79%

Source: Statistics Canada 1996 & 2001 Census (numbers may not add up due to rounding)

Private Dwellings by Period of Construction	# of Dwellings	% of total
Period of construction, before 1946	35	25.00%
Period of construction, 1946 - 1960	20	14.29%
Period of construction, 1961 - 1970	0	0.00%
Period of construction, 1971 - 1980	20	14.29%
Period of construction, 1981 - 1990	45	32.14%
Period of construction, 1991 - 2001	20	14.29%
Total number of private dwellings constructed	140	100.00%

Source: Statistics Canada 2001 Census (numbers may not add up due to rounding)

Disclaimer: Information in this profile has been provided from a variety of external sources. Although every effort has been made to ensure the accuracy, currency and reliability of the content and data, AlbertaFirst.com Ltd. accepts no responsibility in this regard.

© AlbertaFirst.com Ltd., 2006.