

# Barons

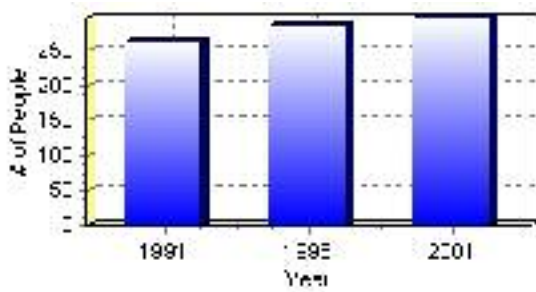
## Population

### Total Population

Population 2004*	296
Population 2003*	296
Population 2002*	296
Population 2001**	285
Population 2000*	285
Population 1996**	285
Population 1991**	262
Population % change 1991-1996	8.07%
Population % change 1996-2001	3.72%

\* Source: Official Population List, Alberta Municipal Affairs  
\*\* Source: Statistics Canada 1991, 1996, & 2001 Census

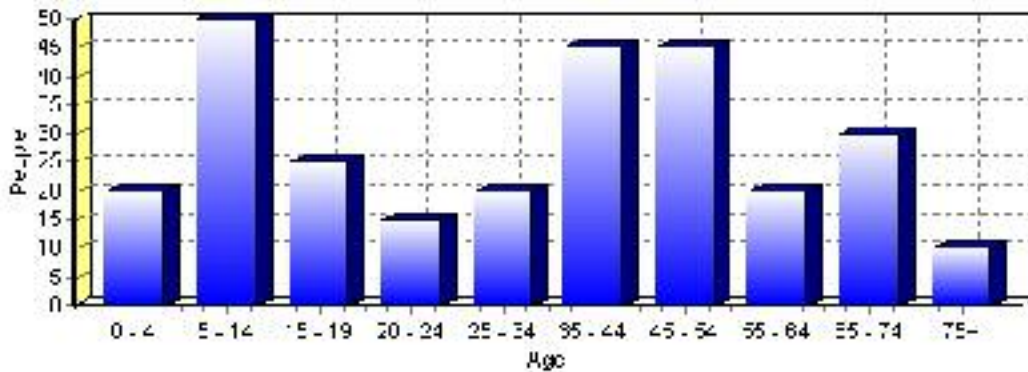
### Total Population 1991-2001



Population by Age and Gender	1996 Male	1996 Female	1996 Total	2001 Male	2001 Female	2001 Total
Age 0 - 4	15	10	25	10	10	20
Age 5 - 14	25	30	55	20	30	50
Age 15 - 19	10	5	15	15	10	25
Age 20 - 24	5	5	10	10	5	15
Age 25 - 34	15	20	35	10	10	20
Age 35 - 44	25	25	50	25	20	45
Age 45 - 54	10	10	20	25	20	45
Age 55 - 64	25	5	30	10	10	20
Age 65 - 74	15	15	30	15	15	30
Age 75 and older	10	15	25	10	0	10
Total All Persons	150	135	285	150	130	280

Source: Statistics Canada 1996 & 2001 Census (numbers may not add up due to rounding)

### Barons Population by Age Group (2001)

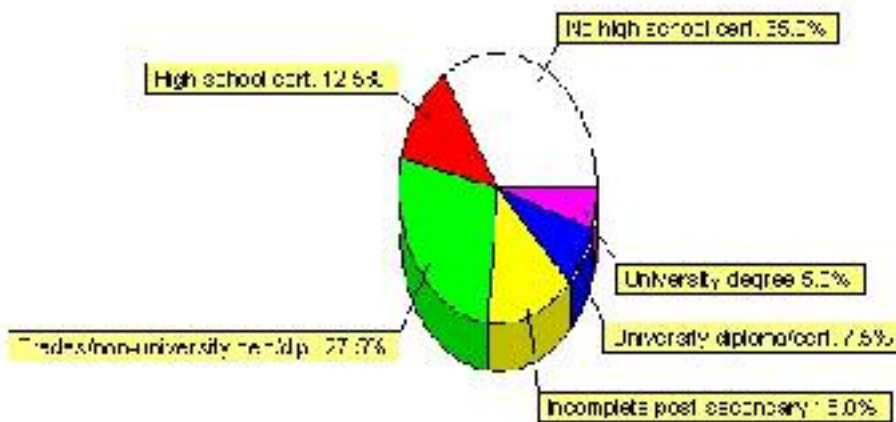


# Education Statistics

Highest level of schooling for Population 20yrs and older	2001	%
People without high school certificates	70	35.00%
People with high school certificates	25	12.50%
People with trades or non-university certificate or diploma	55	27.50%
People with post-secondary education (not completed)	30	15.00%
People with university diploma/certificate	15	7.50%
People with university degree	10	5.00%
Total Population 20 years and older	200	100.00%

Source: Statistics Canada 2001 Census (numbers may not add up due to rounding)

## Barons Highest Level of Schooling 2001



Population with Post Secondary Qualifications	1996	%	2001	%
Agriculture and biological sciences	10	25.00%	20	25.00%
Commerce, management and business administration	0	0.00%	10	12.50%
Educational, recreational and counseling services	10	25.00%	0	0.00%
Engineering and applied science tech. and trades	15	37.50%	35	43.75%
Engineering and applied sciences	0	0.00%	0	0.00%
Fine and applied arts	0	0.00%	0	0.00%
Health professionals, science and technologies	0	0.00%	10	12.50%
Humanities and related fields	0	0.00%	0	0.00%
Mathematics and physical sciences	0	0.00%	0	0.00%
Social sciences and related fields	0	0.00%	0	0.00%
Other and/or no specialization	0	0.00%	0	0.00%
Total people with post secondary qualifications	40	100.00%	80	100.00%
Females with post-secondary qualifications	20	50.00%	25	31.25%
Males with post-secondary qualifications	20	50.00%	55	68.75%

Source: Statistics Canada 1996 & 2001 Census (numbers may not add up due to rounding)

## Labour Force

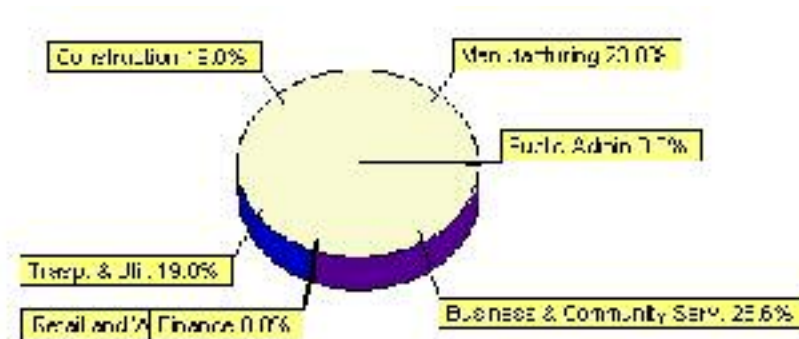
Labour force by activity	1996	2001
In the labour force, both sexes	115	105
Not in the labour force, both sexes	90	115
Total population 15 and over	205	215
Employed, both sexes	110	95
Unemployed, both sexes	0	10
Participation rate, both sexes	56.00%	49.00%
Unemployment rate, both sexes	0.00%	10.00%

Source: Statistics Canada 1996 & 2001 Census (numbers may not add up due to rounding)

Labour Force by Industry Division	1996	% of total	2001	% of total
Agriculture	25	21.74%	0	0.00%
Mining	0	0.00%	0	0.00%
Manufacturing	25	21.74%	25	23.81%
Construction	15	13.04%	20	19.05%
Transportation. & Utilities	10	8.70%	20	19.05%
Retail and Wholesale	15	13.04%	0	0.00%
Finance	0	0.00%	0	0.00%
Business & Community Services	15	13.04%	30	28.57%
Public Administration	0	0.00%	0	0.00%
Total All Industries	115	100.00%	105	100.00%

Source: Statistics Canada 1996 & 2001 Census (numbers may not add up due to rounding)

### Barons Labour Force By Industry - 2001



Labour Force by Major Occupational Groups	1996	%	2001	%
Management occupations	0	0.00%	0	0.00%
Business, Finances and administrative occupations	15	12.50%	10	9.52%
Natural and applied sciences and related occupations	0	0.00%	0	0.00%
Health occupations	0	0.00%	0	0.00%
Occupations in social science; education; government and religion	0	0.00%	0	0.00%
Occupations in art; culture; recreation and sport	0	0.00%	0	0.00%

Sales and service occupations	30	25.00%	20	19.05%
Trades; transport; equipment operators and related occupations	30	25.00%	55	52.38%
Occupations unique to primary industry	20	16.67%	10	9.52%
Occupations unique to processing; manufacturing and utilities	15	12.50%	10	9.52%
Occupations not elsewhere classified	0	0.00%	0	0.00%
Total - All Occupations (major groups)	120	100.00%	105	100.00%
Females - All Occupations	50	41.67%	35	33.33%
Males - All Occupations	70	58.33%	65	61.90%

Source: Statistics Canada 1996 & 2001 Census (numbers may not add up due to rounding)

---

## Income

<b>Family Income (Number of Families)</b>	<b>1996</b>	<b>%</b>	<b>2001</b>	<b>%</b>
less than \$19,999	10	16.67%	15	20.00%
\$20,000 - \$39,999	40	66.67%	25	33.33%
\$40,000 - \$59,999	0	0.00%	35	46.67%
\$60,000 and over	10	16.67%	0	0.00%
Total number of families	60	100.00%	75	100.00%
Average family income	\$34,162		\$42,404	
Median family income	\$28,292		\$43,065	

Source: Statistics Canada 1996 & 2001 Census (numbers may not add up due to rounding)

<b>Household Income (Number of Households)</b>	<b>1996</b>	<b>%</b>	<b>2001</b>	<b>%</b>
less than \$19,999	45	40.91%	30	27.27%
\$20,000 - \$39,999	40	36.36%	25	22.73%
\$40,000 - \$59,999	20	18.18%	40	36.36%
\$60,000 and over	0	0.00%	20	18.18%
Total number of households	110	100.00%	110	100.00%
Average household income	\$27,073		\$39,684	
Median household income	\$25,703		\$41,029	

Source: Statistics Canada 1996 & 2001 Census (numbers may not add up due to rounding)

## Dwellings

<b>Occupied Private Dwellings by Type</b>	<b>1996</b>	<b>% of total</b>	<b>2001</b>	<b>% of total</b>
Apartments	10	9.09%	0	0.00%
Detached Duplexes	0	0.00%	0	0.00%
Movable Dwellings	10	9.09%	15	13.64%
Other single attached house	0	0.00%	0	0.00%
Row and semi-detached house	0	0.00%	0	0.00%
Single-detached house	90	81.82%	90	81.82%
Total number of occupied private dwellings	110	100.00%	110	100.00%
Private dwellings, owned	80	72.73%	100	90.91%
Private Dwellings, rented	30	27.27%	10	9.09%

Source: Statistics Canada 1996 & 2001 Census (numbers may not add up due to rounding)

<b>Private Dwellings by Period of Construction</b>	<b># of Dwellings</b>	<b>% of total</b>
Period of construction, before 1946	45	40.91%
Period of construction, 1946 - 1960	25	22.73%
Period of construction, 1961 - 1970	20	18.18%
Period of construction, 1971 - 1980	10	9.09%
Period of construction, 1981 - 1990	0	0.00%
Period of construction, 1991 - 2001	10	9.09%
Total number of private dwellings constructed	110	100.00%

Source: Statistics Canada 2001 Census (numbers may not add up due to rounding)

Disclaimer: Information in this profile has been provided from a variety of external sources. Although every effort has been made to ensure the accuracy, currency and reliability of the content and data, AlbertaFirst.com Ltd. accepts no responsibility in this regard.

© AlbertaFirst.com Ltd., 2006.