

# Special Area No. 3

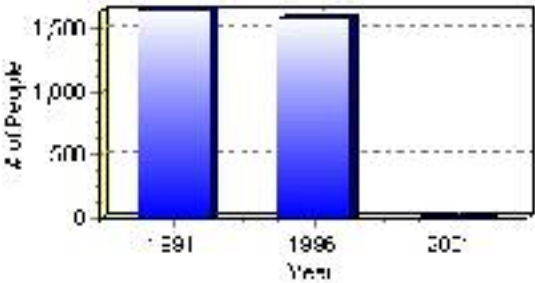
## Population

### Total Population

Population 2004*	0
Population 2003*	0
Population 2002*	0
Population 2001**	1,470
Population 2000*	1,584
Population 1996**	1,584
Population 1991**	1,649
Population % change 1991-1996	-4.10%
Population % change 1996-2001	0.00%

\* Source: Official Population List, Alberta Municipal Affairs  
\*\* Source: Statistics Canada 1991, 1996, & 2001 Census

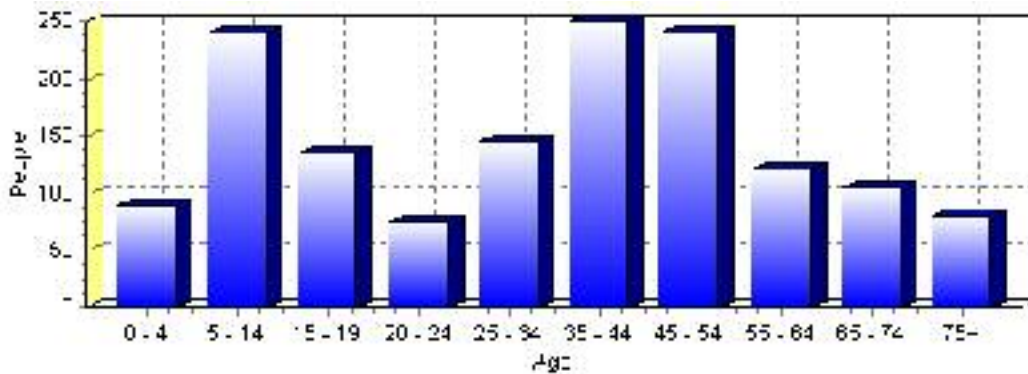
### Total Population 1991-2001



Population by Age and Gender	1996 Male	1996 Female	1996 Total	2001 Male	2001 Female	2001 Total
Age 0 - 4	70	60	130	45	45	90
Age 5 - 14	145	150	295	125	115	240
Age 15 - 19	65	65	130	65	70	135
Age 20 - 24	50	25	75	45	30	75
Age 25 - 34	110	100	210	80	65	145
Age 35 - 44	145	125	270	130	120	250
Age 45 - 54	100	85	185	135	105	240
Age 55 - 64	70	60	130	60	60	120
Age 65 - 74	75	50	125	60	45	105
Age 75 and older	25	15	40	50	30	80
Total All Persons	845	735	1,580	785	680	1,465

Source: Statistics Canada 1996 & 2001 Census (numbers may not add up due to rounding)

### Special Area No. 3 Population by Age Group (2001)

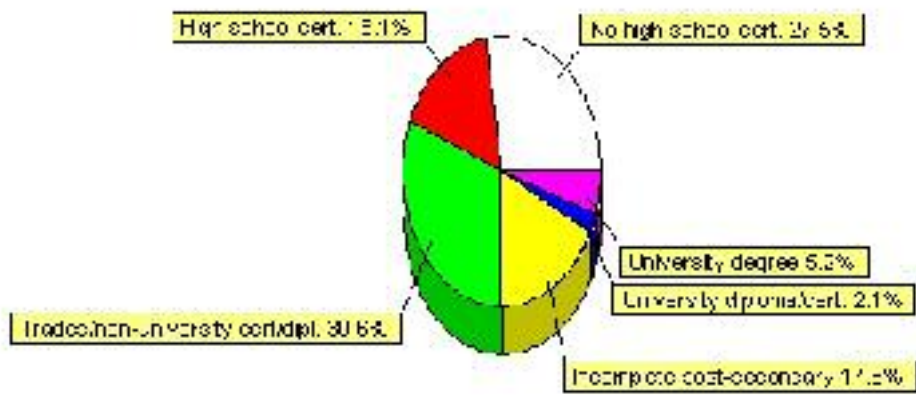


# Education Statistics

Highest level of schooling for Population 20yrs and older	2001	%
People without high school certificates	265	27.46%
People with high school certificates	155	16.06%
People with trades or non-university certificate or diploma	295	30.57%
People with post-secondary education (not completed)	170	17.62%
People with university diploma/certificate	20	2.07%
People with university degree	50	5.18%
Total Population 20 years and older	965	100.00%

Source: Statistics Canada 2001 Census (numbers may not add up due to rounding)

## Special Area No. 3 Highest Level of Schooling 2001



Population with Post Secondary Qualifications	1996	%	2001	%
Agriculture and biological sciences	80	23.19%	40	10.67%
Commerce, management and business administration	25	7.25%	40	10.67%
Educational, recreational and counseling services	45	13.04%	50	13.33%
Engineering and applied science tech. and trades	85	24.64%	145	38.67%
Engineering and applied sciences	0	0.00%	10	2.67%
Fine and applied arts	10	2.90%	15	4.00%
Health professionals, science and technologies	70	20.29%	55	14.67%
Humanities and related fields	0	0.00%	0	0.00%
Mathematics and physical sciences	0	0.00%	0	0.00%
Social sciences and related fields	10	2.90%	10	2.67%
Other and/or no specialization	10	2.90%	0	0.00%
Total people with post secondary qualifications	345	100.00%	375	100.00%
Females with post-secondary qualifications	190	55.07%	180	48.00%
Males with post-secondary qualifications	155	44.93%	195	52.00%

Source: Statistics Canada 1996 & 2001 Census (numbers may not add up due to rounding)

# Labour Force

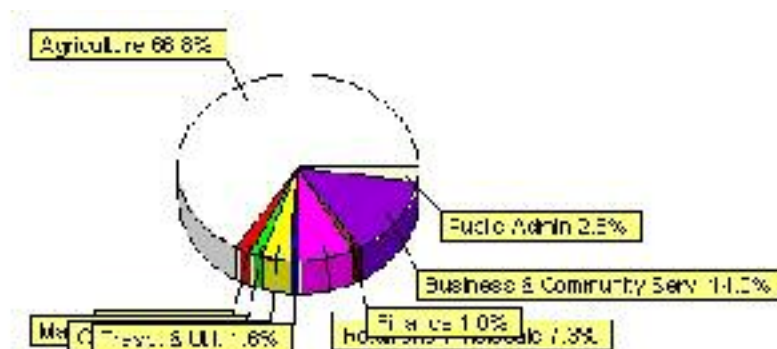
Labour force by activity	1996	2001
In the labour force, both sexes	975	970
Not in the labour force, both sexes	175	150
Total population 15 and over	1,150	1,120
Employed, both sexes	955	950
Unemployed, both sexes	20	20
Participation rate, both sexes	84.00%	87.00%
Unemployment rate, both sexes	2.00%	2.00%

Source: Statistics Canada 1996 & 2001 Census (numbers may not add up due to rounding)

Labour Force by Industry Division	1996	% of total	2001	% of total
Agriculture	685	70.26%	645	66.84%
Mining	20	2.05%	20	2.07%
Manufacturing	0	0.00%	15	1.55%
Construction	35	3.59%	35	3.63%
Transportation. & Utilities	10	1.03%	15	1.55%
Retail and Wholesale	50	5.13%	70	7.25%
Finance	0	0.00%	10	1.04%
Business & Community Services	160	16.41%	135	13.99%
Public Administration	20	2.05%	25	2.59%
Total All Industries	975	100.00%	965	100.00%

Source: Statistics Canada 1996 & 2001 Census (numbers may not add up due to rounding)

## Special Area No. 3 Labour Force By Industry - 2001



Labour Force by Major Occupational Groups	1996	%	2001	%
Management occupations	20	2.05%	15	1.55%
Business, Finances and administrative occupations	65	6.67%	45	4.64%
Natural and applied sciences and related occupations	0	0.00%	10	1.03%
Health occupations	50	5.13%	30	3.09%
Occupations in social science; education; government and religion	15	1.54%	35	3.61%
Occupations in art; culture; recreation and sport	10	1.03%	0	0.00%

Sales and service occupations	125	12.82%	55	5.67%
Trades; transport; equipment operators and related occupations	55	5.64%	95	9.79%
Occupations unique to primary industry	620	63.59%	655	67.53%
Occupations unique to processing; manufacturing and utilities	20	2.05%	35	3.61%
Occupations not elsewhere classified	0	0.00%	0	0.00%
Total - All Occupations (major groups)	975	100.00%	970	100.00%
Females - All Occupations	415	42.56%	440	45.36%
Males - All Occupations	560	57.44%	530	54.64%

Source: Statistics Canada 1996 & 2001 Census (numbers may not add up due to rounding)

---

## Income

---

<b>Family Income (Number of Families)</b>	<b>1996</b>	<b>%</b>	<b>2001</b>	<b>%</b>
less than \$19,999	40	9.88%	30	9.52%
\$20,000 - \$39,999	135	33.33%	140	44.44%
\$40,000 - \$59,999	85	20.99%	110	34.92%
\$60,000 and over	145	35.80%	75	23.81%
Total number of families	405	100.00%	355	112.70%
Average family income	\$51,652		\$50,671	
Median family income	\$43,442		\$44,950	

Source: Statistics Canada 1996 & 2001 Census (numbers may not add up due to rounding)

---

---

<b>Household Income (Number of Households)</b>	<b>1996</b>	<b>%</b>	<b>2001</b>	<b>%</b>
less than \$19,999	70	14.14%	50	10.31%
\$20,000 - \$39,999	160	32.32%	180	37.11%
\$40,000 - \$59,999	120	24.24%	125	25.77%
\$60,000 and over	40	8.08%	130	26.80%
Total number of households	495	100.00%	485	100.00%
Average household income	\$48,325		\$49,387	
Median household income	\$42,054		\$41,510	

Source: Statistics Canada 1996 & 2001 Census (numbers may not add up due to rounding)

---

## Dwellings

<b>Occupied Private Dwellings by Type</b>	<b>1996</b>	<b>% of total</b>	<b>2001</b>	<b>% of total</b>
Apartments	0	0.00%	0	0.00%
Detached Duplexes	0	0.00%	0	0.00%
Movable Dwellings	25	5.05%	40	8.25%
Other single attached house	0	0.00%	0	0.00%
Row and semi-detached house	0	0.00%	0	0.00%
Single-detached house	470	94.95%	440	90.72%
Total number of occupied private dwellings	495	100.00%	485	100.00%
Private dwellings, owned	420	84.85%	375	77.32%
Private Dwellings, rented	75	15.15%	105	21.65%

Source: Statistics Canada 1996 & 2001 Census (numbers may not add up due to rounding)

<b>Private Dwellings by Period of Construction</b>	<b># of Dwellings</b>	<b>% of total</b>
Period of construction, before 1946	85	17.71%
Period of construction, 1946 - 1960	60	12.50%
Period of construction, 1961 - 1970	75	15.63%
Period of construction, 1971 - 1980	130	27.08%
Period of construction, 1981 - 1990	60	12.50%
Period of construction, 1991 - 2001	70	14.58%
Total number of private dwellings constructed	480	100.00%

Source: Statistics Canada 2001 Census (numbers may not add up due to rounding)

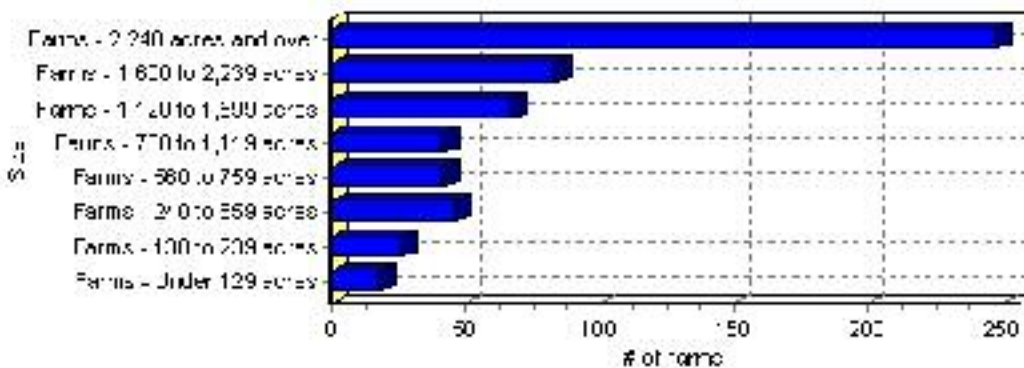
# Farming

Special Area No. 3 Total Farm Area : 575 acres

Farms by Total Farm Area (2001)	# of Farms	% of total
Farms - Under 129 acres	18	3.14%
Farms - 130 to 239 acres	26	4.54%
Farms - 240 to 559 acres	46	8.03%
Farms - 560 to 759 acres	42	7.33%
Farms - 760 to 1,119 acres	42	7.33%
Farms - 1,120 to 1,599 acres	67	11.69%
Farms - 1,600 to 2,239 acres	84	14.66%
Farms - 2,240 acres and over	248	43.28%
Total number of farms reporting	573	100.00%

Source: Statistics Canada 2001 Census of Agriculture(numbers may not add up due to rounding)

## # of Farms by Total Farm Area

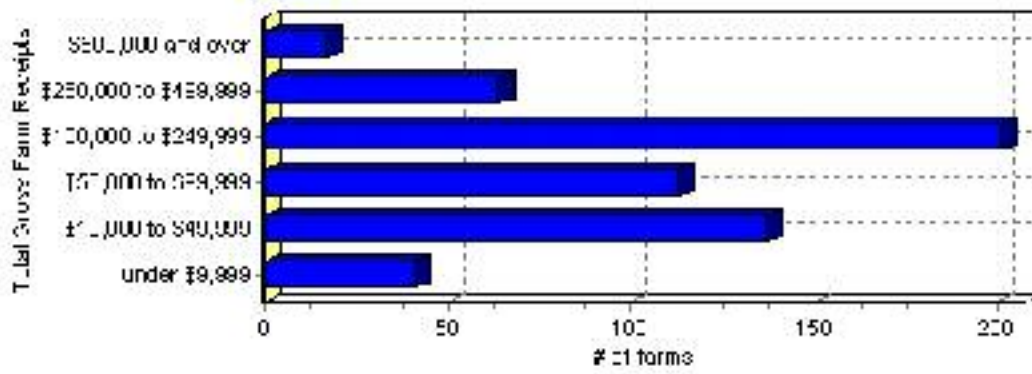


Farms by Total Gross Farm Receipts - 2001	# of Farms	% of total
Farms gross farm receipts - under \$9,999	41	7.16%
Farms gross farm receipts - \$10,000 to \$49,999	137	23.91%
Farms gross farm receipts - \$50,000 to \$99,999	113	19.72%
Farms gross farm receipts - \$100,000 to \$249,999	201	35.08%
Farms gross farm receipts - \$250,000 to \$499,999	64	11.17%
Farms gross farm receipts - \$500,000 and over	17	2.97%
Total number of farms reporting	573	100.00%

Source: Statistics Canada 2001 Census of Agriculture(numbers may not add up due to rounding)

## Total Gross Farm Receipts



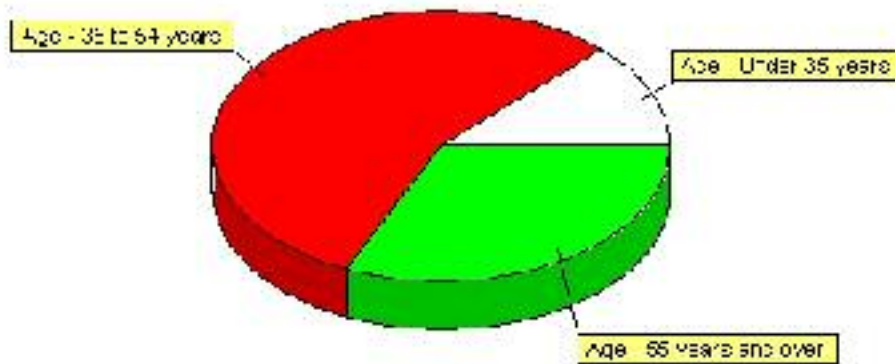


## Farming, Continued

Characteristics of Farm Operators	#	%
Age - Under 35 years	95	12.58%
Age - 35 to 54 years	420	55.63%
Age - 55 years and over	240	31.79%
Average age of operators	49	
Number of operators - Female	175	23.18%
Number of operators - Male	575	76.16%
Total number of operators reporting	755	100.00%

Source: Statistics Canada 2001 Census of Agriculture(numbers may not add up due to rounding)

### Age of Farm Operators



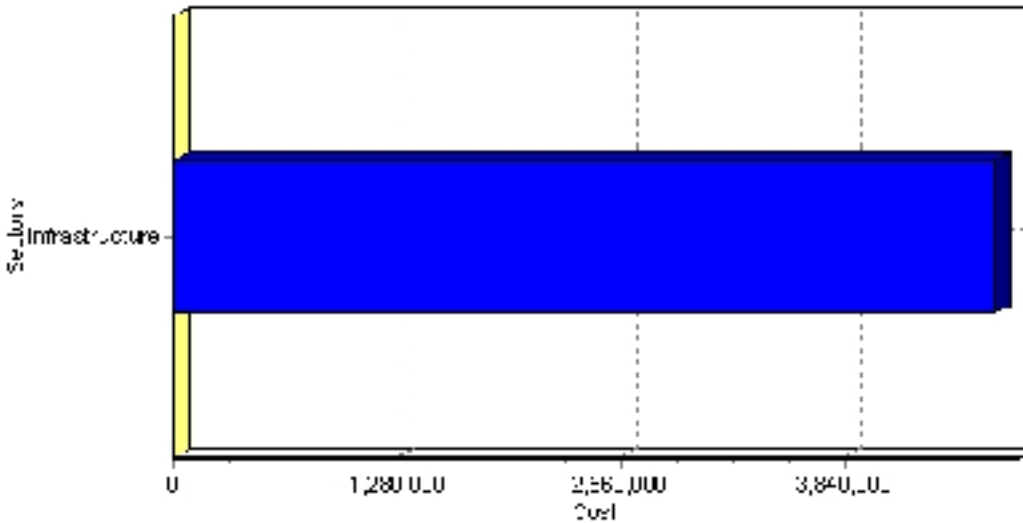
# Projects

## Summary of Projects in Special Area No. 3 as of September 2006

Project Sector	Number of Projects	Project Cost
Infrastructure	1	\$4,700,000
Total	1	\$4,700,000

This inventory lists projects in Alberta that have recently been completed, are under construction, or are proposed to start construction. Not all projects are listed due to reasons of confidentiality and/or due to information not being available at the time of printing. Project data is obtained from public information sources, where possible, this data has been verified with the project proponent/developer, users of the Inventory may wish to confirm project data with the proponent/developer. The inventory does not breakdown project expenditures by any given year. The cost of a project is the value of expenditures expected over all phases of project construction, which may span over two or more years. Cost of projects listed in the Inventory are estimated values only. Source: Alberta Economic Development, 2004.

## Value of Projects by Sector (as of September 2006)



Project Status	Number of Projects	Project Cost
Completed	1	\$4,700,000
Total	1	\$4,700,000

This inventory lists projects in Alberta that have recently been completed, are under construction, or are proposed to start construction. Not all projects are listed due to reasons of confidentiality and/or due to information not being available at the time of printing. Project data is obtained from public information sources, where possible, this data has been verified with the project proponent/developer, users of the Inventory may wish to confirm project data with the proponent/developer. The inventory does not breakdown project expenditures by any given year. The cost of a project is the value of expenditures expected over all phases of project construction, which may span over two or more years. Cost of projects listed in the Inventory are estimated values only. Source: Alberta Economic Development, 2004.

## Largest Projects in Special Area No. 3 as of September 2006

Company Name	Project Description	Project Location	Project Cost	Construction Schedule	Status
Alberta Infrastructure and Transportation	SH 570 Base and Staged Paving	Special Area 3 (SH884 to SH 886)	\$4,700,000	2005-2006	Completed

Disclaimer: Information in this profile has been provided from a variety of external sources. Although every effort has been made to ensure the accuracy, currency and reliability of the content and data, AlbertaFirst.com Ltd. accepts no responsibility in this regard.

© AlbertaFirst.com Ltd., 2006.