

# Alliance

[www.discoveralberta.com/AlbertasHeartland/Alliance](http://www.discoveralberta.com/AlbertasHeartland/Alliance)

## Welcome

Whether your interest in our energetic community be residential, tourism, retail, or industrial; we welcome you.

Are you ready to enjoy the virtues of small town living? Then Alliance is the place for you. It is an exciting little community with all the necessary amenities.

Having trouble paying the mortgage? Try Alliance; where affordable housing and lots are available.

ain wage earner away for weeks at a time? Try Alliance; where your familiy will be safe and will have the advantage of a strong support system.

Thinking of starting a business? Through a combined effort of the established businesses, the Community Development Committee, and the Village of Alliance, you will receive the support you need. At the moment we are especially looking for a carpenter/handyman and persons interested in starting a business of their own.

Not only is this clean, picturesque community ideal for your families, it is also a great place for retirees, artists, and tourists.

Thank you for your interest in the friendly Village of Alliance.



The Village of Alliance Welcomes You!

## Area Overview

Alliance, located in East-Central Alberta, was incorporated in 1916 after the arrival of the Canadian National Railway. Through its long history it has been a major grain marketing area. It has also become a centre for the district's gas and oil activities. More recently, it has begun to establish itself as an artistic community.

Being close to the rolling hills and steep cliffs of the Battle River, Alliance has a beauty that changes with the seasons.

## Climate

As does the rest of Alberta, Alliance has a moderate climate with distinct seasons including mild winters and warm summers.

## Community Services

### Municipal

Village of Alliance  
Box 149  
Alliance, Alberta  
T0B 0A0

Tel: 780-879-3911  
Fax: 780-879-2235  
E-mail: [allivil@telusplanet.net](mailto:allivil@telusplanet.net)

### **Provincial**

- Registry Service - Buchanan Agencies  
Tel: 780-879-3653
- Community Health Services [Sedgewick]  
Well Baby Clinic in Alliance 1st Wednesday of each month.
- FFCS - Flagstaff Family & Community Services [Killam]
- East Central Region 5 Child and Family Services [Killam]

### **Federal**

- Canada Post Franchise Office
- Buchanan Agencies  
Tel: [780-879-3653]

## **Community Lifestyle**

### **Recreation**

The Recreation Centre holds a library, meeting room and floor curling area. Other facilities include a museum, an indoor skating arena, a walking trail, 3 ball diamonds, a dance academy, a riding arena with pens and chutes for roping and other livestock events and a new children's playground. (please see the photos below)

Located a few kilometers south of the Village is the Valley Ski Hill which offers artificial snow as well as a day lodge for skiers. The ski hill also hosts an annual snocross race. (please see the photos below)

The Village has a community hall with kitchen facilities, a trailer park with power, water, and a dump station. Non-serviced camping is available at the campsite just south of Alliance near the Alliance Battle River Bridge.

Alliance is an active member of the Trail of the Buffalo Tourism: Association: Please see [www.albertabuffalotrail.org](http://www.albertabuffalotrail.org)

### **Community Organizations**

Alliance's community organizations include the Lions Club, Ladies Aid, Women's Institute, Girls and Boys Clubs, Royal Canadian Legion, Riding Club, Agricultural Society, Museum Society, Community Development Committee, and Peacock Academy of Dance. As well, Alliance has many volunteer groups such as the First of July Committee. (please see the photos below)

### **Resort Areas**

Camping is available near the Battle River at the Alliance Bridge, the Lorraine Bridge, and the Burma Bridge. Burma Park also has two ball diamonds. Big Knife Provincial Park is within a 30 minute drive.

### **Religious Services**

United Church

### **Special Annual Events/Attractions**

- The Alliance Museum provides a unique look into Alliance's rural heritage and history.
- Norman Johnston's home houses a huge collection of books, musical recordings and art work.
- Murals and steel sculptures
- Tree-lined streets and colorful gardens

- The oldest arena for miles around

(please see the photos below)

### **Annual Events**

- New Years Eve Family Dance
- Trailmakers Challenge - ski hill - Last Saturday of March
- Mothers Day Breakfast - May
- Sports Day - July 1st
- A Day at the Gallery - First Saturday of November - odd year
- Santa Daze and Parade of Lights - second Saturday of December

(please see the photos below)

### **Hospitality**

#### ***Accommodation***

- Alliance Valley Inn - 8 rooms  
Tel: 879-3699 or 879-2220
- Commercial Hotel - 8 rooms  
Tel: 879-3816
- Frona's Bed & Breakfast  
Tel: 879-3655

#### ***Restaurants***

- Alliance Valley Inn Lounge
- Commercial Hotel



Local artisan's work displayed at "A Day at the Gallery".



Canada Day Celebrations include a locally sponsored parade.



Snowmen on Parade in the annual Festival of Lights.



Participants enjoy the annual Snocross Race



Locally create woodwork displayed at "A Day at the Gallery".

## Economic Base

Farming, ranching, oil and gas activity, as well as race and miniature horses help make up the economic base - as do the twenty-nine local businesses and the many home-based activities.

## Economic Facts

Alliance has one active grain elevator, oil and gas wells, and many thriving small businesses.

### Major Businesses Products/Services

- Ag. Industries
- Agricore United Elevator
- Agricore United Fertilizer Plant
- Alliance Bottle Depot
- Alliance Cold Beer and Liquor Store
- Alliance Garden Center
- Alliance General Hardware
- Alliance Seed Cleaning Plant

- Alliance Valley Inn
- Al's Welding
- Battle River Credit Union
- Bob's Corner Service (gas & repair)
- Buchanan Agencies (prov. gov. reg., post office, ATB)
- Buchanan Bigway (grocery store)
- C&E Trucking
- Commercial Hotel
- Continental Supply Ltd. / C.E. Franklin
- Creative Martini Hand and Nails
- Denlaur Promotional Products
- E-Variety
- E.P. Enterprises
- Frank's Bulk Service (4 pumps)
- Knight Owl Auto Detailing and Bottled Water Delivery
- Lorn's Mobile Oilfield Service
- Main Street Medley
- Massage and Tanning by Corrine
- Mike's Construction
- Neil Lundy Professional Corp. (chartered accountant)
- P & D Trucking
- Peacock Academy of dance
- Peacock Energy Inc.
- Reister's Trout Farm
- Russel Lewis Cutting Welding & Repair
- Rustic Funx Hair
- Skeeter's Hot Oil Service
- South Flagstaff Gas Co-op
- Tapscott Enterprises (large engine repair)
- Tenderfoot Transport Caterpillar Work
- Tykes and other De-lites
- U.G.G. Fertilizer
- V.P. Enterprises (art metal)
- Wiat's Welding

#### **FINANCIAL INSTITUTIONS**

- Battle River Credit Union
- Alberta Treasury Branch (sub agency)



Alliance's Active Grain Elevator.

## Education

Alliance is part of the Battle River Regional School Division #31, headquartered in Camrose [Tel: 780-672-6131].

The schools in Alliance include a Primary School [1-3], a kindergarten (located in the school), and a privately funded playschool. The Alberta Teachers' Association recently recognized the achievements of the Alliance Primary School in their 2004 summer issue of their professional magazine. The students and teachers are featured on the cover of the edition, as well as in a feature article on education in Alliance. Students from grades 6-12 are bussed to neighbouring communities.

### Daycare/Nursery

N/A Alliance

### Public Library

The Alliance Library holds a collection of 7,000 books, and has access to thousands of items through Parkland Regional Library's interlibrary loan program. Videos are available and the library has an active "Early Out" program. The library is open on Tuesday and Friday afternoons. The library also provides public access to its computers and the Internet.



Alliance volunteers construct a new playground for the primary school.

## Emergency Services

All emergency services in Alliance are accessed by calling 911.

### Fire Protection

Alliance is served by a 10-member volunteer fire brigade with one new and one secondary pumper truck and a support cube van.

### Police Services

Alliance is served by the Killam detachment of the Royal Canadian Mounted Police [RCMP] [Tel: 780-582-3502].

### Ambulance Services

Ambulance services are provided from the Hospital in Killam [Tel: 780-385-3741].

STARS air ambulance is available.

## Health Care

The nearest hospitals are located in Killam, 47 km north of Alliance and Castor located south of Alliance.

Well Baby and an immunization clinic are held on the first Wednesday of every month.

24-hour Health Link  
Tel: 1-866-408-LINK

## Key Contacts for Business Development

### Municipal

Village of Alliance  
Box 149  
Alliance, Alberta  
T0B 0A0  
Tel: 780-879-3911  
Fax: 780-879-2235  
E-Mail: [allivil@telusplanet.net](mailto:allivil@telusplanet.net)

Muriel Fankhanel  
Mayor

Laura Towers  
Administrator

Alliance Economic Development  
Village of Alliance  
Box 142  
Alliance, Alberta  
T0B 0A0  
Muriel Fankhanel  
Secretary/Treasurer  
Tel: 780-879-3924

### Provincial (Updated August 2005)

Alberta Economic Development  
Allan Walkey, Regional Manager  
[al.walkey@gov.ab.ca](mailto:al.walkey@gov.ab.ca)  
Dale Beddoes, Client Services Representative  
[dale.beddoes@gov.ab.ca](mailto:dale.beddoes@gov.ab.ca)

5005 - 49 Street  
Camrose, Alberta  
T4V 1N5  
Tel: 780-679-1235  
Fax: 780-679-1250

East Central Alberta Community Futures Development Corporation  
Box 5000  
Viking, Alberta  
T0B 4N0  
Tel: 780-336-3497

Fax: 780-336-2266

Web Site: [www.eastcentral.ab.ca](http://www.eastcentral.ab.ca)

Darlene Curtis: General Manager

**Provincial:**

Doug Griffiths

Member of the Legislative Assembly (MLA)

Battle River-Wainwright Constituency

#130 Legislature Building

10800-97 Avenue

Edmonton AB

T5K 2B6

Tel: 780-422-5369

Fax: 780-422-5385

Constituency Office:

#201 1006-4 Avenue

Wainwright, AB.

T9W 1P9

Phone: 780-842-6177

Fax: (780) 842-3171

[Wainwright@assembly.ab.ca](mailto:Wainwright@assembly.ab.ca)

**Federal**

Leon Benoit

Member of Parliament (MP)

Vegreville-Wainwright Constituency

House of Commons

Ottawa, Ontario

K1A 0A6

Tel: 613-992-4171

Constituency Office:

Professional Building, P.O. Box 300

Mannville, Alberta

0B 2W0

Tel: 780-763-6130 or 1-800-463-1194

E-mail: [benoitl@parl.gc.ca](mailto:benoitl@parl.gc.ca)

Updated [August 2004]

## Location

Located just 211 km southeast of Edmonton, 175 km east of Red Deer, and less than 2 hours from the Saskatchewan border, the Village of Alliance is located next to the junction of Highway 602 and 36, in the southern portion of Flagstaff County No. 29. Highway 36 is a major north/south highway through eastern Alberta and provides easy access to all major centres.





Less than 2 hours from the Saskatchewan border, Alliance is located next to the junction of hHighway 602 and 36, in the southern portion of Flagstaff County No. 29.

## Post Secondary Education

Post secondary education is available from Red Deer Community College in Red Deer; Olds Agricultural College in Olds; Augustana University College in Camrose; and from Edmonton or Calgary-based post-secondary institutions.

## Taxation

### Mill Rates [2005]

- Residential - Public 29.893
- Non-Residential - Public 32.551

The mill rate dropped 2 milts in 2005.

## Transportation

### Air Services

The nearest airport is Castor (33 km. to the south), while the nearest commercial and air freight services are located in Edmonton.

### Rail Services

The Canadian National Railways has a branch line serving Alliance on a very irregular basis. As of November 2003, producer cars have been loaded and shipped on this line.

### Highways

Connecting highways are Highway 36, leading north to Killam #13, and south to Castor #12, and Secondary Highway 602, leading east to Secondary Highway 872.

### Trucking Firms

- Dammann Enterprises
- Highway 9 Express Ltd.
- Highway 13
- Exalta
- Swansons

### **Bus Services**

There is no regular bus service to Alliance.

### **Couriers and Taxis**

Loomis and Purolator are couriers into Alliance. Taxi service is out of Killam.

## **Utilities**

### **Electrical Power:**

ATCO Electric Distribution Service (administered out of the Drumheller office)

Tel: 1-800-668-2248

Direct Energy:

[http://www.directenergy.com/alberta/dep\\_landingpage.html](http://www.directenergy.com/alberta/dep_landingpage.html)

Nexen

1600 801-7th Ave. S.W.

Calgary, AB T2P 3P7

Tel: 403-699-5600

### **Natural Gas:**

South Flagstaff Gas Co-op

Box 57

Alliance, AB T0B 0A0

Tel: 780-879-3602

### **Telephone:**

Telus

10020 - 100 Street

Edmonton, AB T5J 0N5

Tel: 780-493-4400

### **Water Supply:**

Alliance recently drilled two wells which supply the village through it's upgraded treatment plant. Alliance is in the process of installing water meters. User rate is \$30/10m3. \$1.75 for each additional

### **Waste Management:**

Garbage:

Alliance is part of the Flagstaff Regional Solid Waste Management Authority, based in Sedgewick. Residential garbage is collected weekly at a contracted rate of \$13/month. Rented bins are available for commercial use.

Sewage:

Treatment for residential users is a flat rate of \$7.00/month.

Recycling:

Alliance has three recycle bins - one for cardboard and one for milk containers and #2 plastic, and one for composting. A bottle depot operates in the Village.

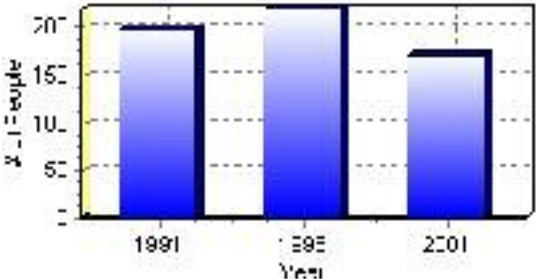
# Population

## Total Population

Population 2004*	171
Population 2003*	171
Population 2002*	171
Population 2001**	170
Population 2000*	169
Population 1996**	220
Population 1991**	199
Population % change 1991-1996	9.55%
Population % change 1996-2001	-28.65%

\* Source: Official Population List, Alberta Municipal Affairs  
\*\* Source: Statistics Canada 1991, 1996, & 2001 Census

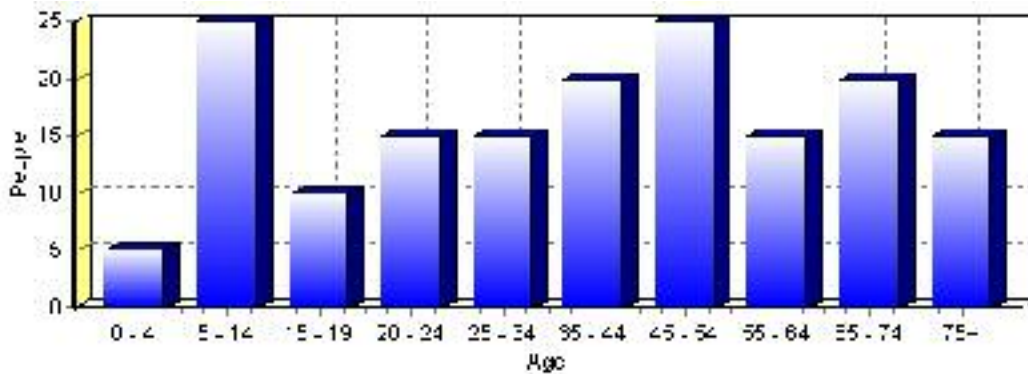
## Total Population 1991-2001



Population by Age and Gender	1996 Male	1996 Female	1996 Total	2001 Male	2001 Female	2001 Total
Age 0 - 4	15	5	20	0	5	5
Age 5 - 14	15	10	25	10	15	25
Age 15 - 19	10	5	15	5	5	10
Age 20 - 24	5	10	15	10	5	15
Age 25 - 34	25	15	40	10	5	15
Age 35 - 44	15	15	30	10	10	20
Age 45 - 54	10	10	20	15	10	25
Age 55 - 64	10	5	15	5	10	15
Age 65 - 74	10	10	20	15	5	20
Age 75 and older	15	15	30	5	10	15
Total All Persons	125	95	220	85	85	170

Source: Statistics Canada 1996 & 2001 Census (numbers may not add up due to rounding)

### Alliance Population by Age Group (2001)

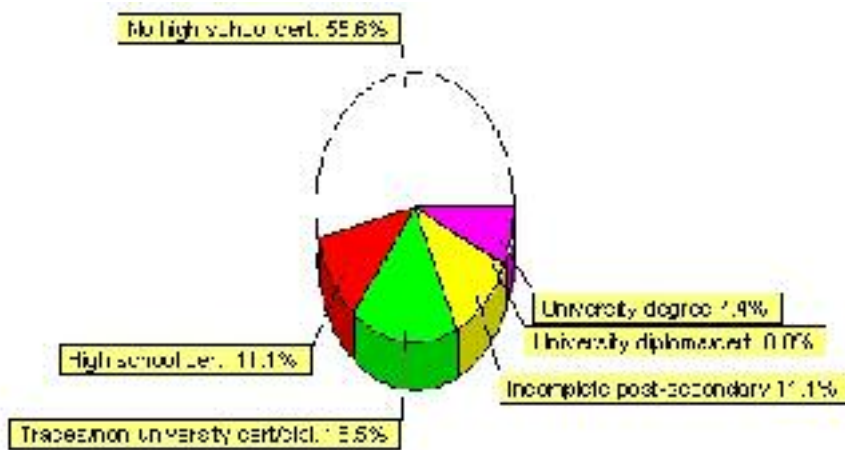


# Education Statistics

Highest level of schooling for Population 20yrs and older	2001	%
People without high school certificates	75	55.56%
People with high school certificates	15	11.11%
People with trades or non-university certificate or diploma	25	18.52%
People with post-secondary education (not completed)	15	11.11%
People with university diploma/certificate	0	0.00%
People with university degree	10	7.41%
Total Population 20 years and older	135	100.00%

Source: Statistics Canada 2001 Census (numbers may not add up due to rounding)

## Alliance Highest Level of Schooling 2001



Population with Post Secondary Qualifications	1996	%	2001	%
Agriculture and biological sciences	15	25.00%	20	80.00%
Commerce, management and business administration	0	0.00%	0	0.00%
Educational, recreational and counseling services	10	16.67%	0	0.00%
Engineering and applied science tech. and trades	10	16.67%	10	40.00%
Engineering and applied sciences	0	0.00%	0	0.00%
Fine and applied arts	10	16.67%	0	0.00%
Health professionals, science and technologies	10	16.67%	10	40.00%
Humanities and related fields	10	16.67%	0	0.00%
Mathematics and physical sciences	0	0.00%	0	0.00%
Social sciences and related fields	0	0.00%	0	0.00%
Other and/or no specialization	0	0.00%	0	0.00%
Total people with post secondary qualifications	60	100.00%	25	100.00%
Females with post-secondary qualifications	35	58.33%	15	60.00%
Males with post-secondary qualifications	25	41.67%	10	40.00%

Source: Statistics Canada 1996 & 2001 Census (numbers may not add up due to rounding)

## Labour Force

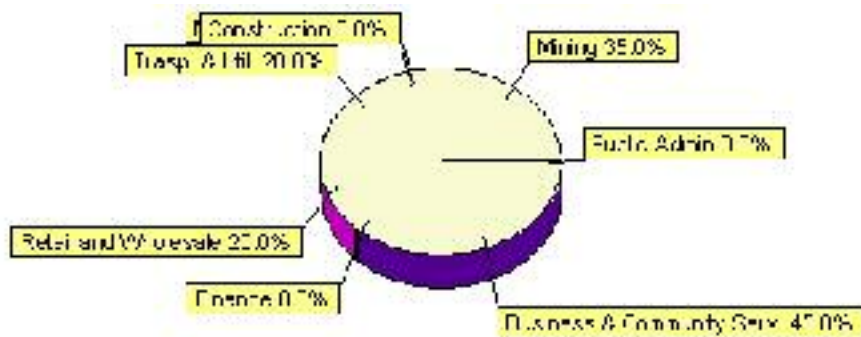
Labour force by activity	1996	2001
In the labour force, both sexes	115	100
Not in the labour force, both sexes	55	35
Total population 15 and over	170	135
Employed, both sexes	95	90
Unemployed, both sexes	20	0
Participation rate, both sexes	67.00%	74.00%
Unemployment rate, both sexes	17.00%	0.00%

Source: Statistics Canada 1996 & 2001 Census (numbers may not add up due to rounding)

Labour Force by Industry Division	1996	% of total	2001	% of total
Agriculture	25	21.74%	0	0.00%
Mining	0	0.00%	35	35.00%
Manufacturing	0	0.00%	0	0.00%
Construction	20	17.39%	0	0.00%
Transportation. & Utilities	0	0.00%	20	20.00%
Retail and Wholesale	20	17.39%	20	20.00%
Finance	0	0.00%	0	0.00%
Business & Community Services	30	26.09%	45	45.00%
Public Administration	0	0.00%	0	0.00%
Total All Industries	115	100.00%	100	100.00%

Source: Statistics Canada 1996 & 2001 Census (numbers may not add up due to rounding)

### Alliance Labour Force By Industry - 2001



Labour Force by Major Occupational Groups	1996	%	2001	%
Management occupations	0	0.00%	10	10.00%
Business, Finances and administrative occupations	0	0.00%	20	20.00%
Natural and applied sciences and related occupations	0	0.00%	0	0.00%
Health occupations	0	0.00%	0	0.00%
Occupations in social science; education; government and religion	10	9.09%	10	10.00%
Occupations in art; culture; recreation and sport	0	0.00%	0	0.00%

Sales and service occupations	45	40.91%	20	20.00%
Trades; transport; equipment operators and related occupations	25	22.73%	0	0.00%
Occupations unique to primary industry	20	18.18%	10	10.00%
Occupations unique to processing; manufacturing and utilities	0	0.00%	30	30.00%
Occupations not elsewhere classified	0	0.00%	0	0.00%
Total - All Occupations (major groups)	110	100.00%	100	100.00%
Females - All Occupations	45	40.91%	45	45.00%
Males - All Occupations	65	59.09%	55	55.00%

Source: Statistics Canada 1996 & 2001 Census (numbers may not add up due to rounding)

---

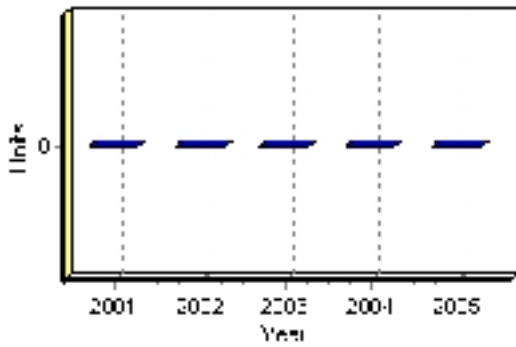


# Building Permits

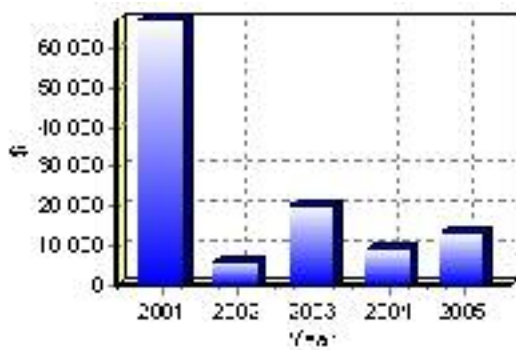
Total Building Permit Values	2001	2002	2003	2004	2005
Building Permits Value, Commercial	\$0	\$0	\$0	\$0	\$0
Building Permits Value, Industrial	\$0	\$0	\$0	\$0	\$0
Building Permits Value, Institutional	\$0	\$0	\$0	\$0	\$0
Building Permits Value, Residential	\$67,000	\$6,000	\$20,000	\$9,000	\$13,000
Building Permits Value, Total	\$67,000	\$6,000	\$20,000	\$9,000	\$13,000
Total Housing Starts	0	0	0	0	0

Source: Statistics Canada 2000-2004 Building Permits (numbers may not add up due to rounding)

## Total Housing Starts



## Value of Building Permits



## Dwellings

<b>Occupied Private Dwellings by Type</b>	<b>1996</b>	<b>% of total</b>	<b>2001</b>	<b>% of total</b>
Apartments	0	0.00%	0	0.00%
Detached Duplexes	0	0.00%	0	0.00%
Movable Dwellings	10	10.53%	0	0.00%
Other single attached house	0	0.00%	0	0.00%
Row and semi-detached house	0	0.00%	5	5.88%
Single-detached house	85	89.47%	80	94.12%
Total number of occupied private dwellings	95	100.00%	85	100.00%
Private dwellings, owned	80	84.21%	65	76.47%
Private Dwellings, rented	20	21.05%	20	23.53%

Source: Statistics Canada 1996 & 2001 Census (numbers may not add up due to rounding)

<b>Private Dwellings by Period of Construction</b>	<b># of Dwellings</b>	<b>% of total</b>
Period of construction, before 1946	10	11.76%
Period of construction, 1946 - 1960	20	23.53%
Period of construction, 1961 - 1970	10	11.76%
Period of construction, 1971 - 1980	35	41.18%
Period of construction, 1981 - 1990	10	11.76%
Period of construction, 1991 - 2001	0	0.00%
Total number of private dwellings constructed	85	100.00%

Source: Statistics Canada 2001 Census (numbers may not add up due to rounding)

Disclaimer: Information in this profile has been provided from a variety of external sources. Although every effort has been made to ensure the accuracy, currency and reliability of the content and data, AlbertaFirst.com Ltd. accepts no responsibility in this regard.

© AlbertaFirst.com Ltd., 2006.