

Champion

Welcome

Welcome!

Champion is a peaceful, thriving community, located south of Vulcan on Highway 23. Champion offers great recreational opportunities due to its proximity to Little Bow Reservoir and Twin Valley Reservoir.

A progressive community with something for everyone, Champion offers a warm, friendly, small-town atmosphere you just can't beat!

Area Overview

In 1906, the community of Cleverville was formed approximately four miles east of what is now Highway 23 on Secondary Road 529. Cleverville was named in honor of Martin G. Clever who gave free sites to anyone wishing to build and conduct business in the new hamlet.

In 1910, the Canadian Pacific Railway decided to build a track next to what is now highway 23, bypassing Cleverville. The decision was made to move Cleverville and in 1910 the new townsite began developing.

In 1911, the community received its charter and the first grain was hauled by rail. In 1915, one million bushels of wheat were shipped from Champion and thus Champion became known as "the Million Bushel Town". The Coal Mines were also operational during this time.

Community Lifestyle

RECREATION

Skating Rink - natural ice

Swimming Pool - outdoor and operational from June to August.

Track - great for running or walking laps on well kept shale surface

Ball Diamonds

Riding Club

RELIGION

Evangelical Free Church

St. Mary's Catholic Church

Congregational Church

Latter Day Saints

LIBRARY

Member of the Chinook Arch Library System

www.chinookarch.ab.ca

PIONEER DROP IN CENTRE

Active over 50 crowd which holds potlucks, pool, shuffleboard, card games and takes an active interest in the community.

ORGANIZATIONS

Champion Lions Club
Champion Legion

Economic Base

Agriculture is the main industry, although the oil and gas sector is gaining momentum in the area.

Economic Facts

Services

NI Upholstery
Hillcrest Seed Cleaning Plant

Bank

Alberta Treasury Branch - Satellite office

Retail

Grocery Store
Liquor Store

Restaurant

A & P Restaurant

Education

Champion Community School offers and grade 1-9 program and within the facility, a privately run kindergarten prepares the children for their education. The school offers a band program, the only one in Vulcan County, as well as a Marine Biology program. Upon completion of their grade 9 year, they are transported to County Central High School in Vulcan for grades 10 - 12.

www.pallisersd.ab.ca

Hope Christian School offers grade 1-12.

Emergency Services

911 Service

Champion has a volunteer fire department of 15 members.
They have just purchased a new response truck and a compressed air foam system.

Vulcan Hospital is located 21 km (15 miles) North.

Health Care

Vulcan Health Center is 21 km (15 miles) north and is an 8 bed active facility with 15 long term beds, D level radiology, fully equipped modern lab and a modern emergency area. Other services at the Hospital include occupational therapy, mental health worker, social worker and palliative care.

Other medical services in Vulcan include: Vulcan Medical Clinic, Dentists, Chiropractors, Optometrist, Podiatrist and Hearing Aid services.

Key Contacts for Business Development

Municipal:

Village of Champion
Box 367
Champion Ab. T0L 0R0

Vulcan Business Development Society
Box 360
Vulcan Ab. T0L 2B0
403-485-4100

Provincial:

Honourable Barry McFarland
Member of the Legislative Assembly (MLA)
#410 Legislature Building
10800 - 97 Avenue
Edmonton AB T5K 2B6
Tel: 780-427-0879
Fax: 780-422-0351

Constituency Office:

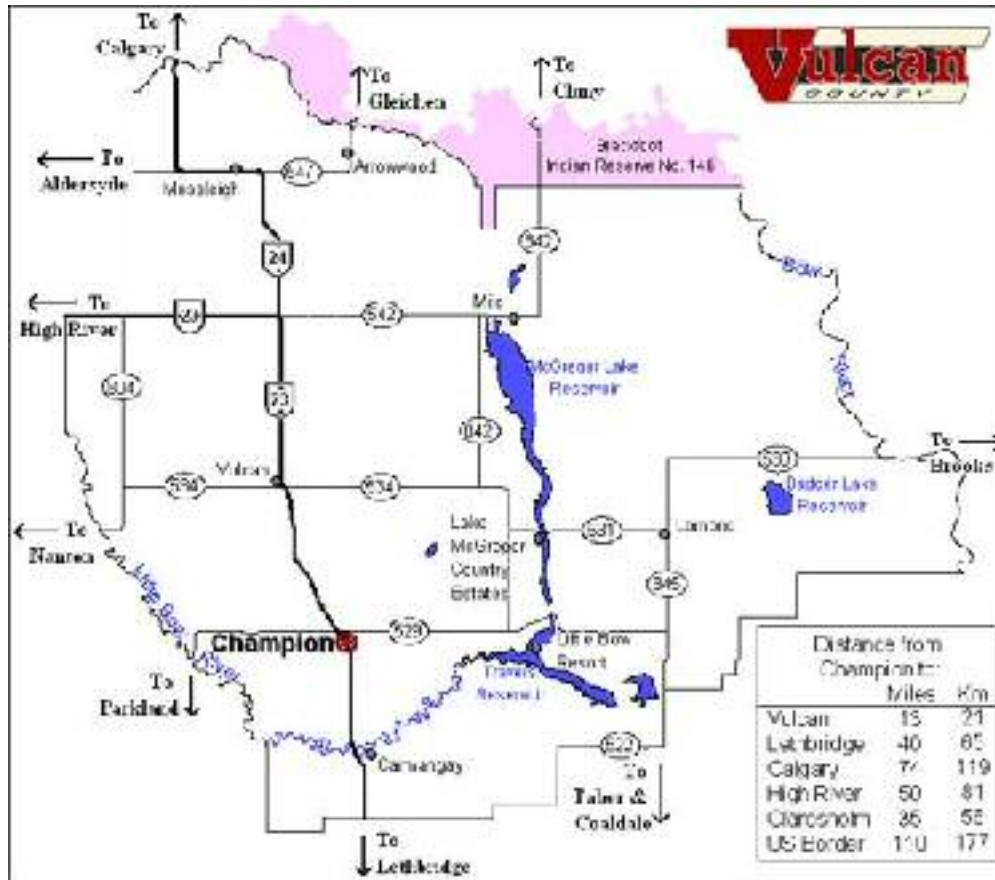
P.O. Box 231
111 Carman Street
Carmangay AB T0L 0N0
Tel: 403-643-2077
Toll Free: 1-800-563-0917
Fax: 403-643-2024

Federal:

Ted Menzies
Member of Parliament (MP)
Macleod Constituency
Ottawa, Ontario

Location

Champion is between Calgary and Lethbridge on Highway 23 and is close to the water resources in the County.



Champion is central to many locations.



County Map and Distances

Post Secondary Education

Lethbridge Community College and the University of Lethbridge are located 65 km (40 miles) South of Champion.

Mount Royal College, University of Calgary, and Southern Alberta Institute of Technology are located 119 km (74 miles) North of Champion.

Transportation

RAILWAY

Champion is located on the Canadian Pacific main line.

HIGHWAY

Champion lies on Highway 23 with links the Village to Highway 3 to Lethbridge (South) and Highways 1 or 2 (North). Secondary Highway 529 links Champion to Little Bow Provincial Park (East) and Highway 2 (West).

BUS

There is daily Greyhound Bus Service.

AIR

Commercial and freight services are located in Lethbridge. The nearest International facility is the Calgary International Airport.

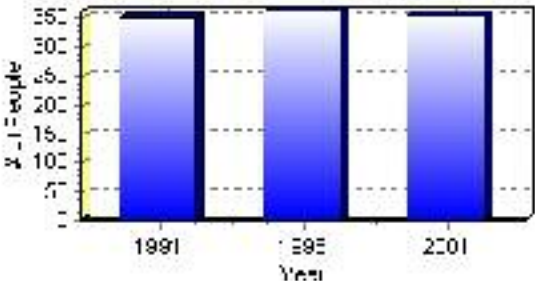
Population

Total Population

Population 2004*	355
Population 2003*	355
Population 2002*	355
Population 2001**	355
Population 2000*	384
Population 1996**	362
Population 1991**	351
Population % change 1991-1996	3.04%
Population % change 1996-2001	-1.97%

* Source: Official Population List, Alberta Municipal Affairs
** Source: Statistics Canada 1991, 1996, & 2001 Census

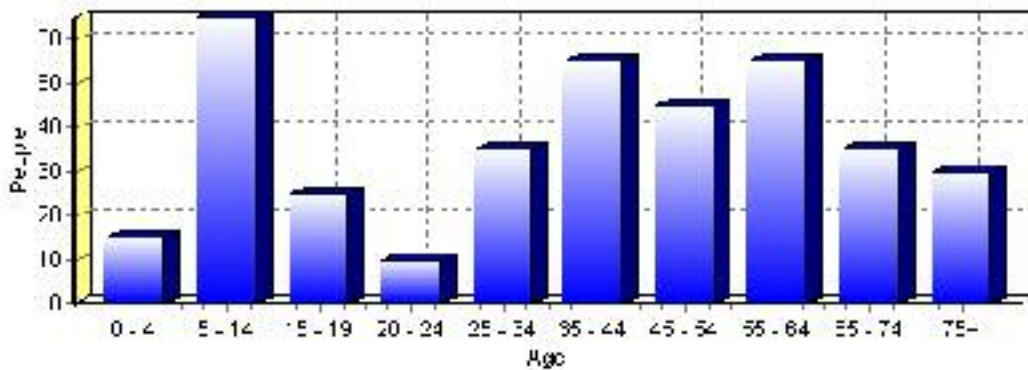
Total Population 1991-2001



Population by Age and Gender	1996 Male	1996 Female	1996 Total	2001 Male	2001 Female	2001 Total
Age 0 - 4	10	15	25	0	15	15
Age 5 - 14	20	40	60	35	30	65
Age 15 - 19	10	15	25	15	10	25
Age 20 - 24	5	5	10	5	5	10
Age 25 - 34	20	25	45	20	15	35
Age 35 - 44	30	15	45	25	30	55
Age 45 - 54	20	20	40	25	20	45
Age 55 - 64	20	20	40	30	25	55
Age 65 - 74	20	20	40	20	15	35
Age 75 and older	10	20	30	20	10	30
Total All Persons	170	195	365	180	180	360

Source: Statistics Canada 1996 & 2001 Census (numbers may not add up due to rounding)

Champion Population by Age Group (2001)

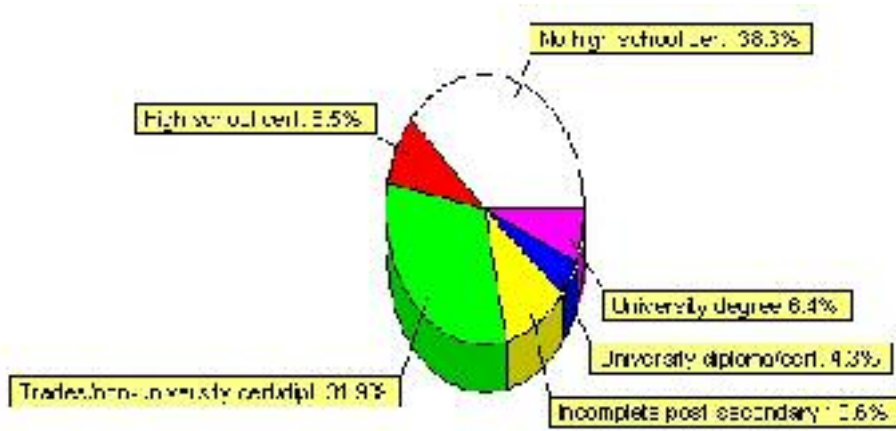


Education Statistics

Highest level of schooling for Population 20yrs and older	2001	%
People without high school certificates	90	38.30%
People with high school certificates	20	8.51%
People with trades or non-university certificate or diploma	75	31.91%
People with post-secondary education (not completed)	25	10.64%
People with university diploma/certificate	10	4.26%
People with university degree	15	6.38%
Total Population 20 years and older	235	100.00%

Source: Statistics Canada 2001 Census (numbers may not add up due to rounding)

Champion Highest Level of Schooling 2001



Population with Post Secondary Qualifications	1996	%	2001	%
Agriculture and biological sciences	10	11.76%	0	0.00%
Commerce, management and business administration	30	35.29%	20	20.00%
Educational, recreational and counseling services	0	0.00%	15	15.00%
Engineering and applied science tech. and trades	35	41.18%	35	35.00%
Engineering and applied sciences	0	0.00%	0	0.00%
Fine and applied arts	0	0.00%	10	10.00%
Health professionals, science and technologies	20	23.53%	10	10.00%
Humanities and related fields	0	0.00%	10	10.00%
Mathematics and physical sciences	0	0.00%	0	0.00%
Social sciences and related fields	0	0.00%	10	10.00%
Other and/or no specialization	0	0.00%	0	0.00%
Total people with post secondary qualifications	85	100.00%	100	100.00%
Females with post-secondary qualifications	40	47.06%	55	55.00%
Males with post-secondary qualifications	45	52.94%	45	45.00%

Source: Statistics Canada 1996 & 2001 Census (numbers may not add up due to rounding)

Labour Force

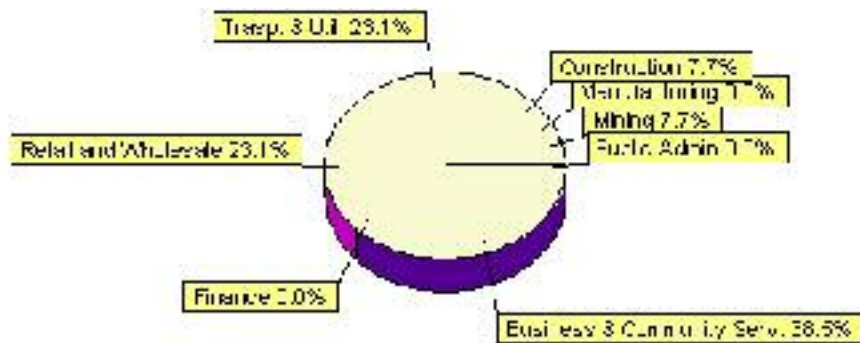
Labour force by activity	1996	2001
In the labour force, both sexes	135	125
Not in the labour force, both sexes	125	125
Total population 15 and over	260	255
Employed, both sexes	130	115
Unemployed, both sexes	10	15
Participation rate, both sexes	52.00%	49.00%
Unemployment rate, both sexes	7.00%	12.00%

Source: Statistics Canada 1996 & 2001 Census (numbers may not add up due to rounding)

Labour Force by Industry Division	1996	% of total	2001	% of total
Agriculture	0	0.00%	0	0.00%
Mining	0	0.00%	10	7.69%
Manufacturing	0	0.00%	0	0.00%
Construction	0	0.00%	10	7.69%
Transportation. & Utilities	10	7.69%	30	23.08%
Retail and Wholesale	40	30.77%	30	23.08%
Finance	0	0.00%	0	0.00%
Business & Community Services	60	46.15%	50	38.46%
Public Administration	0	0.00%	0	0.00%
Total All Industries	130	100.00%	130	100.00%

Source: Statistics Canada 1996 & 2001 Census (numbers may not add up due to rounding)

Champion Labour Force By Industry - 2001



Labour Force by Major Occupational Groups	1996	%	2001	%
Management occupations	15	11.54%	15	12.00%
Business, Finances and administrative occupations	0	0.00%	10	8.00%
Natural and applied sciences and related occupations	0	0.00%	0	0.00%
Health occupations	10	7.69%	10	8.00%
Occupations in social science; education; government and religion	10	7.69%	15	12.00%
Occupations in art; culture; recreation and sport	0	0.00%	0	0.00%

Sales and service occupations	50	38.46%	50	40.00%
Trades; transport; equipment operators and related occupations	35	26.92%	40	32.00%
Occupations unique to primary industry	0	0.00%	0	0.00%
Occupations unique to processing; manufacturing and utilities	0	0.00%	0	0.00%
Occupations not elsewhere classified	10	7.69%	0	0.00%
Total - All Occupations (major groups)	130	100.00%	125	100.00%
Females - All Occupations	65	50.00%	60	48.00%
Males - All Occupations	65	50.00%	65	52.00%

Source: Statistics Canada 1996 & 2001 Census (numbers may not add up due to rounding)

Income

Family Income (Number of Families)	1996	%	2001	%
less than \$19,999	0	0.00%	25	38.46%
\$20,000 - \$39,999	30	40.00%	35	53.85%
\$40,000 - \$59,999	35	46.67%	35	53.85%
\$60,000 and over	10	13.33%	0	0.00%
Total number of families	75	100.00%	95	146.15%
Average family income	\$39,379		\$32,440	
Median family income	\$43,516		\$29,166	

Source: Statistics Canada 1996 & 2001 Census (numbers may not add up due to rounding)

Household Income (Number of Households)	1996	%	2001	%
less than \$19,999	70	45.16%	55	36.67%
\$20,000 - \$39,999	45	29.03%	40	26.67%
\$40,000 - \$59,999	40	25.81%	40	26.67%
\$60,000 and over	10	6.45%	10	6.67%
Total number of households	155	100.00%	150	100.00%
Average household income	\$26,312		\$29,196	
Median household income	\$26,249		\$26,630	

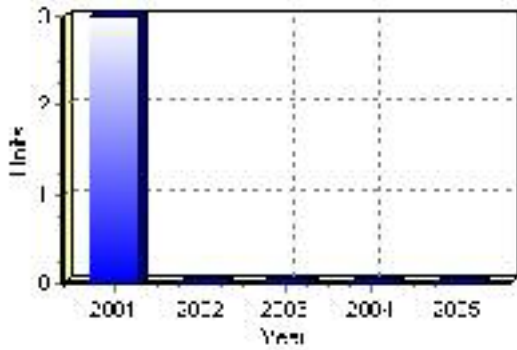
Source: Statistics Canada 1996 & 2001 Census (numbers may not add up due to rounding)

Building Permits

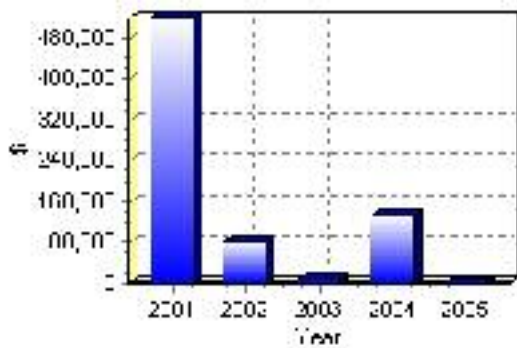
Total Building Permit Values	2001	2002	2003	2004	2005
Building Permits Value, Commercial	\$50,000	\$0	\$0	\$0	\$0
Building Permits Value, Industrial	\$0	\$0	\$0	\$0	\$0
Building Permits Value, Institutional	\$0	\$6,000	\$0	\$45,000	\$0
Building Permits Value, Residential	\$467,000	\$77,000	\$9,000	\$86,000	\$0
Building Permits Value, Total	\$517,000	\$83,000	\$9,000	\$131,000	\$0
Total Housing Starts	3	0	0	0	0

Source: Statistics Canada 2000-2004 Building Permits (numbers may not add up due to rounding)

Total Housing Starts



Value of Building Permits



Dwellings

Occupied Private Dwellings by Type	1996	% of total	2001	% of total
Apartments	10	6.67%	5	3.33%
Detached Duplexes	0	0.00%	0	0.00%
Movable Dwellings	20	13.33%	30	20.00%
Other single attached house	20	13.33%	0	0.00%
Row and semi-detached house	0	0.00%	0	0.00%
Single-detached house	110	73.33%	110	73.33%
Total number of occupied private dwellings	150	100.00%	150	100.00%
Private dwellings, owned	135	90.00%	120	80.00%
Private Dwellings, rented	15	10.00%	30	20.00%

Source: Statistics Canada 1996 & 2001 Census (numbers may not add up due to rounding)

Private Dwellings by Period of Construction	# of Dwellings	% of total
Period of construction, before 1946	45	30.00%
Period of construction, 1946 - 1960	30	20.00%
Period of construction, 1961 - 1970	15	10.00%
Period of construction, 1971 - 1980	20	13.33%
Period of construction, 1981 - 1990	15	10.00%
Period of construction, 1991 - 2001	25	16.67%
Total number of private dwellings constructed	150	100.00%

Source: Statistics Canada 2001 Census (numbers may not add up due to rounding)

Disclaimer: Information in this profile has been provided from a variety of external sources. Although every effort has been made to ensure the accuracy, currency and reliability of the content and data, AlbertaFirst.com Ltd. accepts no responsibility in this regard.

© AlbertaFirst.com Ltd., 2006.