

Tofield

www.tofieldalberta.ca

Welcome

Welcome to the town of **Tofield**.

Area Overview

Crisp clean air, the sounds of children playing, clean well-manicured streets and friendly safe neighbourhoods. It's all here in the Town of Tofield.

Tofield is home for nearly 2,000 citizens - and it's growing each year. New residents are attracted by the many amenities the community has to offer. Most of all, they like urban convenience and lifestyle without the traffic, crime and congestion of big city life.

Nearby Beaverhill Lake enjoys an international reputation that is second to none in western Canada. With this kind of natural haven so accessible to the people of western Canada, it's no wonder that the people of the Town of Tofield invite the world to "Come Share Our Viewpoint".

Community Services

Municipal

Town of Tofield
P.O. Box 30
Tofield, Alberta
T0B 4J0
Telephone: 780-662-3269
Fax: 780-662-3929

Municipal Library

Provincial

Medical Examiner-Coroner
Provincial Court

Federal

Canada Post
Royal Canadian Mounted Police

Community Lifestyle

Recreation

Each year, Tofield enjoys one of nature's greatest phenomena - bird migration. Beaverhill Lake is located along one of Canada's most important flyways for migrating geese, ducks, swans, pelicans and song birds. Over 250 species have been sighted with about 150 of these finding the lake a suitable nesting habitat. This annual miracle gives Tofield our slogan, "Bird Capital of Alberta".

Recreational facilities are second to none. From ball diamonds to arenas and the golf course to the Library, Tofield has it all. Summer is for golf and baseball, slow pitch, fastball, horseback riding, or countless other activities. The 9-hole golf course with grass greens is in excellent condition. The Lions Playground is popular with children, and there is an inter-connecting trail system in Town for jogging, walking, etc. Winter is for hockey, figure skating, curling, gymnasium sports, or darts.

Community Organizations

Over 50 groups, clubs, or committees guarantee an opportunity for everyone to participate. Service clubs are led by the Royal Canadian Legion, the Masonic Lodge, Tofield Lions Club, and the Tofield Health Centre Ladies Auxiliary. Seniors are an active part of the community; their Drop-In Centre is always busy.

Religious Services

- Hastings Lake Lutheran Bible Camp
- Salem Mennonite Church
- Tofield Alliance Church
- Tofield Mennonite Church
- Tofield Baptist Church
- United Church

Special Annual Events/Attractions

- Snow Goose Festival -- April
- Sodbuster Rodeo -- May
- Agricultural Fair -- August
- The Harvest Klassic Slowpitch Tournament -- Autumn
- Don't Hibernate Fair -- Autumn

Hospitality

Accommodation

- Beaverhill Motel
- Berry Inn Bed & Breakfast
- Tofield Hotel

Restaurants

- Charlie's Place Restaurant
- Diamond Restaurant
- TJ's Soup and Sandwich
- That Place Coffee Shop
- Tilly's Family Dining and Pizza

Economic Base

The economic base of the Tofield area includes agriculture, oil and gas, commercial services and tourism.

Economic Facts

Historically, Tofield's commercial services were for the agricultural sector - the rolling farmlands supported a vibrant livestock and

grain industry - and the oil and gas industry.

That function remains today, but changing times have led to a new focus - serving the needs of the people. With its strategic location along Highway 14, Tofield has become a service centre to the surrounding area. People services are wide-ranging and provide the basis for most of the economic activity in Tofield. Local government services are provided to the vast area of the County and the Town. This focus has led to the construction of several government offices, which have brought a highly skilled and well-educated workforce to the community. Complementing the government services sector is a strong commercial sector geared to attending the consumer's needs, including a wide range of professional services such as doctors, lawyers, pharmacists, etc.

Tourism is another growing sector in the region. Providing tourism information, souvenirs, food, lodging, and automotive services is a growing part of Tofield's economic picture. Each year, tourist numbers increase and provide opportunities for more visitor related businesses.

Major Businesses Products/Services

Financial Institutions

- Bank of Montreal
- Alberta Treasury Branch

Education

Tofield is part of the Battle River Regional School District #31, headquartered in Camrose [telephone: 780-672-6131]. Tofield is an educational centre for the surrounding region.

Daycare/Nursery

Rainbow Family Day Care

Public

Public schools in Tofield include C.W. Sears Elementary School [K-4] and Tofield School [5-12]. The schools are continually upgraded to meet the community's needs.

Separate

N/A

Private

N/A

Emergency Services

Fire Protection

Tofield is served by a local volunteer fire department [Call 911].

Police Services

Tofield is served by a local detachment of the Royal Canadian Mounted Police [RCMP] [telephone: 780-662-3352].

Ambulance Services

The Beaver Ambulance Society provides service to Tofield [Call 911].

Health Care

The Tofield Health Centre features active treatment and long-term care facilities supported by a professional staff of 140. The Vegreville Health Unit is another key player in Tofield, providing public inoculation and a variety of other health-related services.

Family and Community Support Services, provided by the Town of Tofield, have a Handi-Van and daycare facilities.

Key Contacts for Business Development

Municipal

Town of Tofield
P.O. Box 30
Tofield, Alberta
T0B 4J0
Tel: 780-662-3269
Fax: 780-662-3929

Nabil Chehayab
Mayor

Cindy Neufeld
Administrator

Jackie Kallal
Director of Community Development
Tofield and District Economic Development Committee

Provincial (Updated May 2006)

Alberta Economic Development
Allan Walkey, Regional Manager
allan.walkey@gov.ab.ca
Dale Beddoes, Information Officer
dale.beddoes@gov.ab.ca

5005 - 49 Street
Camrose, Alberta
T4V 1N5
Tel: 780-679-1235
Fax: 780-679-1250

Hon. Ed Stelmach
Member of the Legislative Assembly [MLA]
Vegreville-Viking Constituency

Constituency Office
Box 451
4945 - 51 Avenue
Vegreville
T9C 1R6
Phone: (780) 632-6840

Fax: (780) 632-6888
fortsaskatchewan.vegreville@assembly.ab.ca

Legislature Office
607 Legislature Annex
9718 107 Street
Edmonton
T5K 1E4
Phone: (780) 422-5384
Fax: (780) 415-0951

Federal (Updated May 2006)

Leon Benoit
Member of Parliament [MP]
Lakeland Constituency

Parliamentary Address
House of Commons
Ottawa, Ontario
K1A 0A6
Telephone: (613) 992-4171
Fax: (613) 996-9011
E-Mail: Benoit.L@parl.gc.ca

Constituency Address
5004 - 49th Street, Professional Building, P.O. Box 300
Mannville, Alberta
T0B 2W0
Telephone: (780) 763-6130 1-800-463-1194
Fax: (780) 763-6132
TTY:
E-Mail: benoit1@parl.gc.ca

Location

The Town of Tofield is located in the County of Beaver #9, in central Alberta. It is just 62 km east of Edmonton on Highway 14.

Post Secondary Education

Tofield is only 60 km from Edmonton-based post-secondary institutions such as The University of Alberta, Grant McKewan College, and Northern Alberta Institute of Technology [NAIT].

Adult and post-secondary education is also available through courses arranged by the Further Education Council, Lakeland College or Athabasca University.

Taxation

Residential/Farmland Non-Residential

2005

Municipal Tax Rate	11.7170	16.9230
Education - Alberta School Foundation Fund Tax Rate	4.2300	7.1590
Seniors Lodge Accommodation Tax Rate	.1940	.1940

Mill Rates [1994]

Residential - Public N/A

Residential - Separate N/A

Non-Residential - Public N/A

Non-Residential - Separate N/A

Transportation

Air Service

The Tofield Municipal Airport has an all-weather, lighted, 900 metre runway. The nearest commercial and air freight services are available at Edmonton International Airport.

Rail Service

Tofield is served by Canadian National Railways.

Highways

Connecting highways are Highway 14 west to Edmonton and east to Wainwright, and Highway 834 north to the Yellowhead Highway and south to Camrose.

Trucking Firms

- Beaverhill Trucklines Ltd.
- Boettger's Trucking
- Brown's Tofield Transport
- Other regional service is available.

Bus Services

Regularly scheduled inter-community service is available.

Couriers and Taxis

Tofield Taxi Service

Utilities

Electrical Power

TransAlta Utilities Corporation
 5036 - 53 Avenue
 Tofield, Alberta
 Telephone: 780-662-3644

Natural Gas

Atco Gas Ltd.

4720 - 46 Avenue
Tofield, Alberta
Telephone: 780-662-3030

Telephone

Telus
Edmonton, Alberta
Telephone: 780-310-2255

Water Supply

N/A

Waste Management

N/A

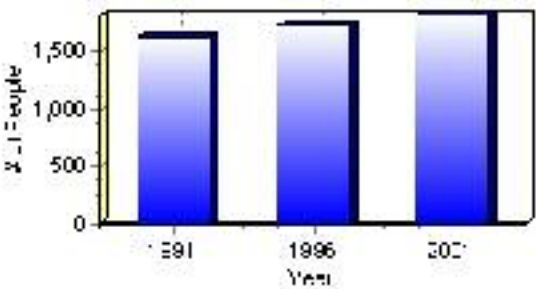
Population

Total Population

Population 2004*	1,818
Population 2003*	1,818
Population 2002*	1,818
Population 2001**	1,815
Population 2000*	1,726
Population 1996**	1,726
Population 1991**	1,620
Population % change 1991-1996	6.14%
Population % change 1996-2001	5.06%

* Source: Official Population List, Alberta Municipal Affairs
** Source: Statistics Canada 1991, 1996, & 2001 Census

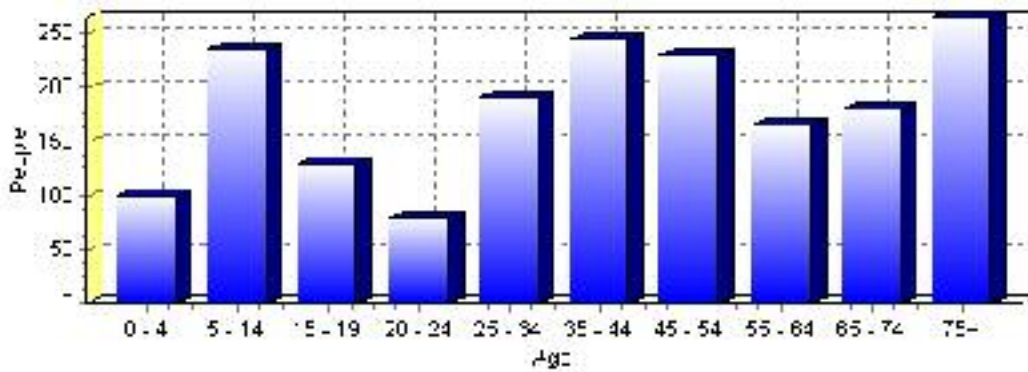
Total Population 1991-2001



Population by Age and Gender	1996 Male	1996 Female	1996 Total	2001 Male	2001 Female	2001 Total
Age 0 - 4	50	55	105	50	50	100
Age 5 - 14	125	140	265	115	120	235
Age 15 - 19	55	55	110	60	70	130
Age 20 - 24	35	40	75	45	35	80
Age 25 - 34	85	115	200	90	100	190
Age 35 - 44	120	115	235	115	130	245
Age 45 - 54	95	95	190	110	120	230
Age 55 - 64	60	70	130	80	85	165
Age 65 - 74	80	120	200	80	100	180
Age 75 and older	85	145	230	100	165	265
Total All Persons	785	940	1,725	840	975	1,815

Source: Statistics Canada 1996 & 2001 Census (numbers may not add up due to rounding)

Tofield Population by Age Group (2001)

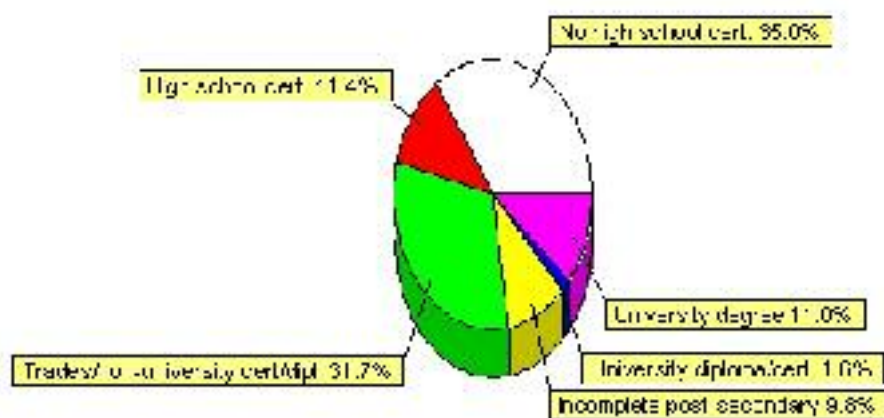


Education Statistics

Highest level of schooling for Population 20yrs and older	2001	%
People without high school certificates	430	34.96%
People with high school certificates	140	11.38%
People with trades or non-university certificate or diploma	390	31.71%
People with post-secondary education (not completed)	120	9.76%
People with university diploma/certificate	20	1.63%
People with university degree	135	10.98%
Total Population 20 years and older	1,230	100.00%

Source: Statistics Canada 2001 Census (numbers may not add up due to rounding)

Tofield Highest Level of Schooling 2001



Population with Post Secondary Qualifications	1996	%	2001	%
Agriculture and biological sciences	30	6.67%	15	2.80%
Commerce, management and business administration	85	18.89%	45	8.41%
Educational, recreational and counseling services	80	17.78%	70	13.08%
Engineering and applied science tech. and trades	100	22.22%	180	33.64%
Engineering and applied sciences	0	0.00%	0	0.00%
Fine and applied arts	20	4.44%	20	3.74%
Health professionals, science and technologies	70	15.56%	105	19.63%
Humanities and related fields	30	6.67%	40	7.48%
Mathematics and physical sciences	0	0.00%	15	2.80%
Social sciences and related fields	40	8.89%	50	9.35%
Other and/or no specialization	0	0.00%	0	0.00%
Total people with post secondary qualifications	450	100.00%	535	100.00%
Females with post-secondary qualifications	265	58.89%	235	43.93%
Males with post-secondary qualifications	185	41.11%	300	56.07%

Source: Statistics Canada 1996 & 2001 Census (numbers may not add up due to rounding)

Labour Force

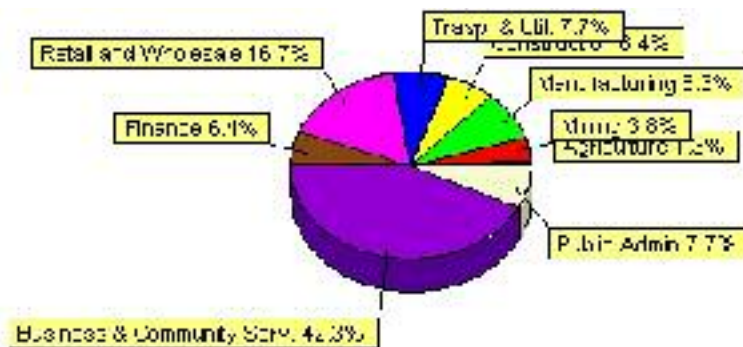
Labour force by activity	1996	2001
In the labour force, both sexes	715	785
Not in the labour force, both sexes	540	570
Total population 15 and over	1,250	1,355
Employed, both sexes	660	750
Unemployed, both sexes	50	35
Participation rate, both sexes	57.00%	58.00%
Unemployment rate, both sexes	7.00%	5.00%

Source: Statistics Canada 1996 & 2001 Census (numbers may not add up due to rounding)

Labour Force by Industry Division	1996	% of total	2001	% of total
Agriculture	55	7.91%	10	1.28%
Mining	10	1.44%	30	3.85%
Manufacturing	45	6.47%	65	8.33%
Construction	45	6.47%	50	6.41%
Transportation. & Utilities	75	10.79%	60	7.69%
Retail and Wholesale	140	20.14%	130	16.67%
Finance	0	0.00%	50	6.41%
Business & Community Services	285	41.01%	330	42.31%
Public Administration	40	5.76%	60	7.69%
Total All Industries	695	100.00%	780	100.00%

Source: Statistics Canada 1996 & 2001 Census (numbers may not add up due to rounding)

Tofield Labour Force By Industry - 2001



Labour Force by Major Occupational Groups	1996	%	2001	%
Management occupations	45	6.47%	55	7.01%
Business, Finances and administrative occupations	90	12.95%	135	17.20%
Natural and applied sciences and related occupations	35	5.04%	10	1.27%
Health occupations	70	10.07%	50	6.37%
Occupations in social science; education; government and religion	45	6.47%	85	10.83%
Occupations in art; culture; recreation and sport	10	1.44%	15	1.91%

Sales and service occupations	195	28.06%	195	24.84%
Trades; transport; equipment operators and related occupations	130	18.71%	180	22.93%
Occupations unique to primary industry	50	7.19%	30	3.82%
Occupations unique to processing; manufacturing and utilities	25	3.60%	20	2.55%
Occupations not elsewhere classified	10	1.44%	0	0.00%
Total - All Occupations (major groups)	695	100.00%	785	100.00%
Females - All Occupations	345	49.64%	370	47.13%
Males - All Occupations	350	50.36%	415	52.87%

Source: Statistics Canada 1996 & 2001 Census (numbers may not add up due to rounding)

Income

Family Income (Number of Families)	1996	%	2001	%
less than \$19,999	25	6.10%	40	9.52%
\$20,000 - \$39,999	125	30.49%	125	29.76%
\$40,000 - \$59,999	140	34.15%	125	29.76%
\$60,000 and over	120	29.27%	115	27.38%
Total number of families	410	100.00%	405	96.43%
Average family income	\$47,716		\$56,913	
Median family income	\$46,074		\$55,421	

Source: Statistics Canada 1996 & 2001 Census (numbers may not add up due to rounding)

Household Income (Number of Households)	1996	%	2001	%
less than \$19,999	150	23.08%	165	23.74%
\$20,000 - \$39,999	205	31.54%	140	20.14%
\$40,000 - \$59,999	155	23.85%	155	22.30%
\$60,000 and over	75	11.54%	230	33.09%
Total number of households	650	100.00%	695	100.00%
Average household income	\$39,818		\$48,777	
Median household income	\$36,466		\$48,690	

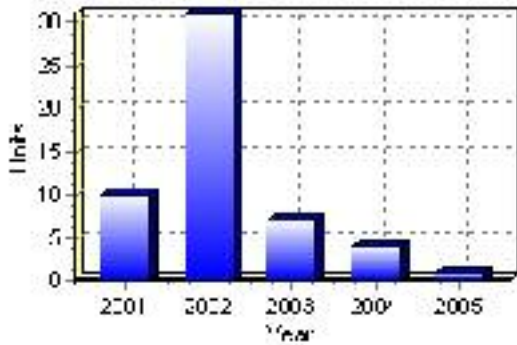
Source: Statistics Canada 1996 & 2001 Census (numbers may not add up due to rounding)

Building Permits

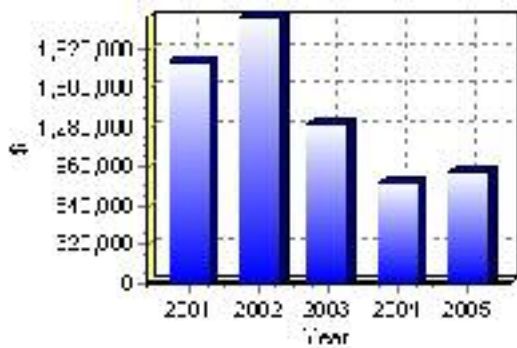
Total Building Permit Values	2001	2002	2003	2004	2005
Building Permits Value, Commercial	\$723,000	\$43,000	\$709,000	\$140,000	\$246,000
Building Permits Value, Industrial	\$0	\$0	\$0	\$0	\$0
Building Permits Value, Institutional	\$0	\$0	\$0	\$0	\$500,000
Building Permits Value, Residential	\$1,092,000	\$2,137,000	\$596,000	\$673,000	\$168,000
Building Permits Value, Total	\$1,815,000	\$2,180,000	\$1,305,000	\$813,000	\$914,000
Total Housing Starts	10	31	7	4	1

Source: Statistics Canada 2000-2004 Building Permits (numbers may not add up due to rounding)

Total Housing Starts



Value of Building Permits



Dwellings

Occupied Private Dwellings by Type	1996	% of total	2001	% of total
Apartments	65	10.00%	55	7.91%
Detached Duplexes	0	0.00%	0	0.00%
Movable Dwellings	10	1.54%	25	3.60%
Other single attached house	0	0.00%	0	0.00%
Row and semi-detached house	20	3.08%	20	2.88%
Single-detached house	555	85.38%	595	85.61%
Total number of occupied private dwellings	650	100.00%	695	100.00%
Private dwellings, owned	480	73.85%	575	82.73%
Private Dwellings, rented	165	25.38%	120	17.27%

Source: Statistics Canada 1996 & 2001 Census (numbers may not add up due to rounding)

Private Dwellings by Period of Construction	# of Dwellings	% of total
Period of construction, before 1946	65	9.49%
Period of construction, 1946 - 1960	100	14.60%
Period of construction, 1961 - 1970	60	8.76%
Period of construction, 1971 - 1980	210	30.66%
Period of construction, 1981 - 1990	150	21.90%
Period of construction, 1991 - 2001	100	14.60%
Total number of private dwellings constructed	685	100.00%

Source: Statistics Canada 2001 Census (numbers may not add up due to rounding)

Disclaimer: Information in this profile has been provided from a variety of external sources. Although every effort has been made to ensure the accuracy, currency and reliability of the content and data, AlbertaFirst.com Ltd. accepts no responsibility in this regard.

© AlbertaFirst.com Ltd., 2006.