

Calmar

www.town.calmar.ab.ca

Key Contacts for Business Development

Mr. Tony Abbott (PC) Contact Information for Mr. Tony Abbott (PC) Constituency Office Box 7272 Drayton Valley, AB T7A 1S5
Phone: (780) 542-3355 Toll Free: 1-800-542-7307 Fax: (780) 542-3331 draytonvalley.calmar@assembly.ab.ca Constituency Office
Box 7272 Drayton Valley, AB T7A 1S5 Phone: (780) 542-3355 Toll Free: 1-800-542-7307 Fax: (780) 542-3331
draytonvalley.calmar@assembly.ab.ca Legislature Office #503 Legislature Building 10800 - 97 Avenue Edmonton, AB T5K 2B6
Phone: (780) 415-9466 Fax: (780) 422-0351 MP~ Wetaskiwin, Alberta CALKINS, Blaine (Conservative) Parliamentary Address
House of Commons Ottawa, Ontario K1A 0A6 Telephone: (613) 995-8886 Fax: (613) 996-9860 E-Mail: Calkins.B@parl.gc.ca
Constituency Address 6-4612 - 50th Street Ponoka, Alberta T4J 1S7 Telephone: (403) 783-5530 Fax: (403) 783-5532 TTY: E-Mail:
calkib1@parl.gc.ca

Taxation

	<u>Residential/Farmland</u>	<u>Non-Residential</u>
<u>2005</u>		
Municipal Tax Rate	10.1600	22.0000
Education - Alberta School Foundation Fund Tax Rate	3.9550	7.2320
Seniors Lodge Accommodation Tax Rate	.0610	.0610

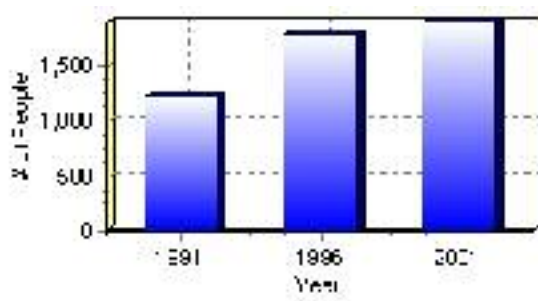
Population

Total Population

Population 2004*	1,902
Population 2003*	1,902
Population 2002*	1,902
Population 2001**	1,905
Population 2000*	1,797
Population 1996**	1,797
Population 1991**	1,225
Population % change 1991-1996	31.83%
Population % change 1996-2001	5.52%

* Source: Official Population List, Alberta Municipal Affairs
** Source: Statistics Canada 1991, 1996, & 2001 Census

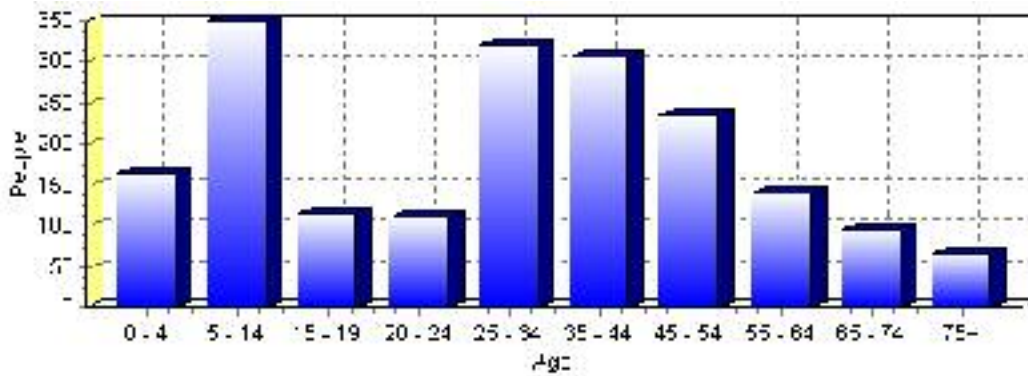
Total Population 1991-2001



Population by Age and Gender	1996 Male	1996 Female	1996 Total	2001 Male	2001 Female	2001 Total
Age 0 - 4	90	70	160	80	85	165
Age 5 - 14	180	160	340	175	175	350
Age 15 - 19	50	65	115	70	45	115
Age 20 - 24	60	55	115	50	60	110
Age 25 - 34	165	180	345	155	165	320
Age 35 - 44	140	135	275	160	145	305
Age 45 - 54	90	90	180	115	120	235
Age 55 - 64	60	55	115	75	65	140
Age 65 - 74	40	45	85	45	50	95
Age 75 and older	25	30	55	30	35	65
Total All Persons	905	890	1,795	960	945	1,905

Source: Statistics Canada 1996 & 2001 Census (numbers may not add up due to rounding)

Calmar Population by Age Group (2001)

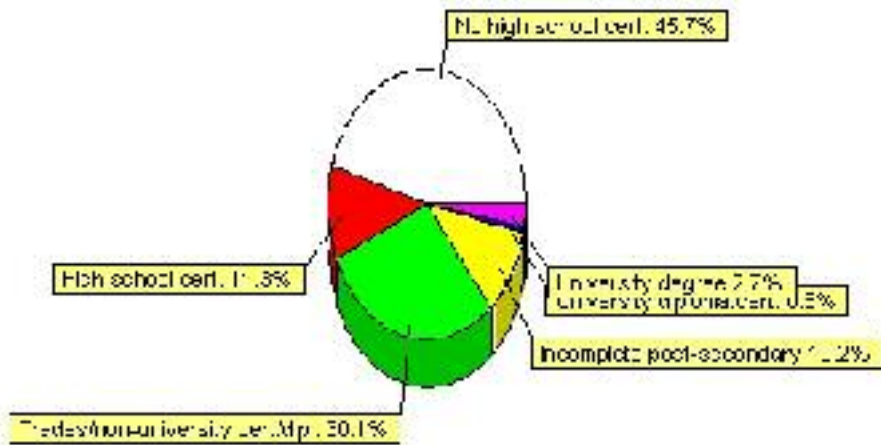


Education Statistics

Highest level of schooling for Population 20yrs and older	2001	%
People without high school certificates	585	45.70%
People with high school certificates	145	11.33%
People with trades or non-university certificate or diploma	385	30.08%
People with post-secondary education (not completed)	130	10.16%
People with university diploma/certificate	10	0.78%
People with university degree	35	2.73%
Total Population 20 years and older	1,280	100.00%

Source: Statistics Canada 2001 Census (numbers may not add up due to rounding)

Calmar Highest Level of Schooling 2001



Population with Post Secondary Qualifications	1996	%	2001	%
Agriculture and biological sciences	45	13.04%	25	5.81%
Commerce, management and business administration	65	18.84%	90	20.93%
Educational, recreational and counseling services	40	11.59%	35	8.14%
Engineering and applied science tech. and trades	135	39.13%	195	45.35%
Engineering and applied sciences	0	0.00%	10	2.33%
Fine and applied arts	15	4.35%	25	5.81%
Health professionals, science and technologies	25	7.25%	35	8.14%
Humanities and related fields	10	2.90%	10	2.33%
Mathematics and physical sciences	10	2.90%	0	0.00%
Social sciences and related fields	0	0.00%	35	8.14%
Other and/or no specialization	0	0.00%	0	0.00%
Total people with post secondary qualifications	345	100.00%	430	100.00%
Females with post-secondary qualifications	130	37.68%	205	47.67%
Males with post-secondary qualifications	215	62.32%	225	52.33%

Source: Statistics Canada 1996 & 2001 Census (numbers may not add up due to rounding)

Labour Force

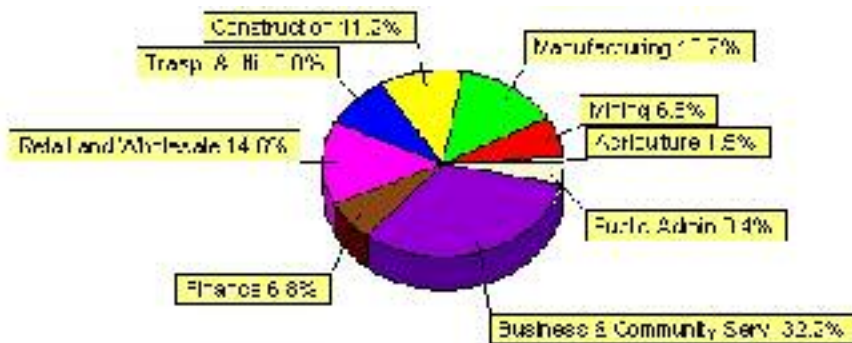
Labour force by activity	1996	2001
In the labour force, both sexes	900	1,025
Not in the labour force, both sexes	400	360
Total population 15 and over	1,300	1,385
Employed, both sexes	830	990
Unemployed, both sexes	65	35
Participation rate, both sexes	69.00%	74.00%
Unemployment rate, both sexes	7.00%	3.00%

Source: Statistics Canada 1996 & 2001 Census (numbers may not add up due to rounding)

Labour Force by Industry Division	1996	% of total	2001	% of total
Agriculture	0	0.00%	15	1.46%
Mining	45	5.08%	70	6.83%
Manufacturing	105	11.86%	140	13.66%
Construction	75	8.47%	115	11.22%
Transportation. & Utilities	115	12.99%	90	8.78%
Retail and Wholesale	185	20.90%	150	14.63%
Finance	30	3.39%	70	6.83%
Business & Community Services	245	27.68%	330	32.20%
Public Administration	25	2.82%	35	3.41%
Total All Industries	885	100.00%	1,025	100.00%

Source: Statistics Canada 1996 & 2001 Census (numbers may not add up due to rounding)

Calmar Labour Force By Industry - 2001



Labour Force by Major Occupational Groups	1996	%	2001	%
Management occupations	55	6.18%	50	4.88%
Business, Finances and administrative occupations	165	18.54%	185	18.05%
Natural and applied sciences and related occupations	35	3.93%	35	3.41%
Health occupations	20	2.25%	10	0.98%
Occupations in social science; education; government and religion	40	4.49%	45	4.39%
Occupations in art; culture; recreation and sport	0	0.00%	10	0.98%

Sales and service occupations	260	29.21%	220	21.46%
Trades; transport; equipment operators and related occupations	215	24.16%	335	32.68%
Occupations unique to primary industry	35	3.93%	55	5.37%
Occupations unique to processing; manufacturing and utilities	60	6.74%	65	6.34%
Occupations not elsewhere classified	15	1.69%	0	0.00%
Total - All Occupations (major groups)	890	100.00%	1,025	100.00%
Females - All Occupations	375	42.13%	420	40.98%
Males - All Occupations	515	57.87%	600	58.54%

Source: Statistics Canada 1996 & 2001 Census (numbers may not add up due to rounding)

Income

Family Income (Number of Families)	1996	%	2001	%
less than \$19,999	20	4.40%	75	16.13%
\$20,000 - \$39,999	180	39.56%	155	33.33%
\$40,000 - \$59,999	140	30.77%	120	25.81%
\$60,000 and over	115	25.27%	165	35.48%
Total number of families	455	100.00%	515	110.75%
Average family income	\$46,622		\$54,786	
Median family income	\$43,607		\$48,270	

Source: Statistics Canada 1996 & 2001 Census (numbers may not add up due to rounding)

Household Income (Number of Households)	1996	%	2001	%
less than \$19,999	100	15.87%	100	14.93%
\$20,000 - \$39,999	225	35.71%	175	26.12%
\$40,000 - \$59,999	175	27.78%	145	21.64%
\$60,000 and over	45	7.14%	245	36.57%
Total number of households	630	100.00%	670	100.00%
Average household income	\$41,828		\$54,132	
Median household income	\$39,277		\$45,446	

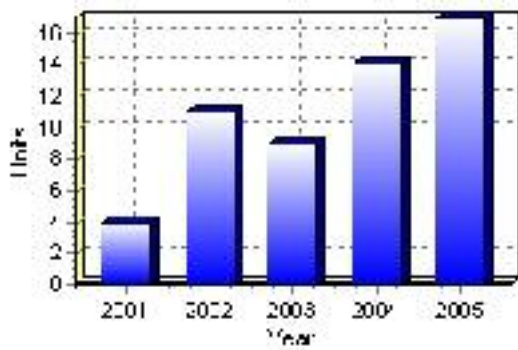
Source: Statistics Canada 1996 & 2001 Census (numbers may not add up due to rounding)

Building Permits

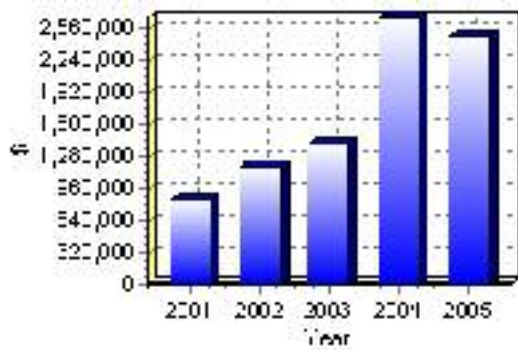
Total Building Permit Values	2001	2002	2003	2004	2005
Building Permits Value, Commercial	\$332,000	\$6,000	\$20,000	\$0	\$20,000
Building Permits Value, Industrial	\$0	\$0	\$60,000	\$0	\$20,000
Building Permits Value, Institutional	\$0	\$0	\$0	\$250,000	\$0
Building Permits Value, Residential	\$509,000	\$1,178,000	\$1,318,000	\$2,415,000	\$2,448,000
Building Permits Value, Total	\$841,000	\$1,184,000	\$1,398,000	\$2,665,000	\$2,488,000
Total Housing Starts	4	11	9	14	17

Source: Statistics Canada 2000-2004 Building Permits (numbers may not add up due to rounding)

Total Housing Starts



Value of Building Permits



Dwellings

Occupied Private Dwellings by Type	1996	% of total	2001	% of total
Apartments	50	7.94%	45	6.77%
Detached Duplexes	0	0.00%	0	0.00%
Movable Dwellings	70	11.11%	60	9.02%
Other single attached house	0	0.00%	0	0.00%
Row and semi-detached house	25	3.97%	35	5.26%
Single-detached house	485	76.98%	525	78.95%
Total number of occupied private dwellings	630	100.00%	665	100.00%
Private dwellings, owned	490	77.78%	540	81.20%
Private Dwellings, rented	150	23.81%	125	18.80%

Source: Statistics Canada 1996 & 2001 Census (numbers may not add up due to rounding)

Private Dwellings by Period of Construction	# of Dwellings	% of total
Period of construction, before 1946	60	9.02%
Period of construction, 1946 - 1960	70	10.53%
Period of construction, 1961 - 1970	90	13.53%
Period of construction, 1971 - 1980	135	20.30%
Period of construction, 1981 - 1990	90	13.53%
Period of construction, 1991 - 2001	220	33.08%
Total number of private dwellings constructed	665	100.00%

Source: Statistics Canada 2001 Census (numbers may not add up due to rounding)

Disclaimer: Information in this profile has been provided from a variety of external sources. Although every effort has been made to ensure the accuracy, currency and reliability of the content and data, AlbertaFirst.com Ltd. accepts no responsibility in this regard.

© AlbertaFirst.com Ltd., 2006.