

Ranchland No. 66, M.D. of

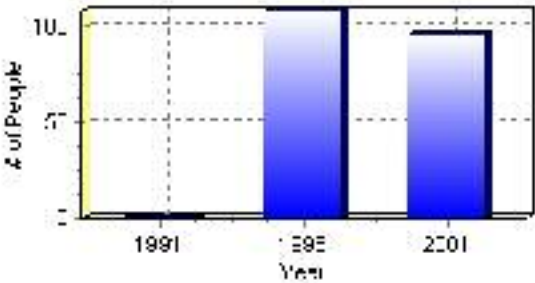
Population

Total Population

Population 2004*	96
Population 2003*	96
Population 2002*	96
Population 2001**	95
Population 2000*	108
Population 1996**	108
Population 1991**	0
Population % change 1991-1996	100.00%
Population % change 1996-2001	-12.50%

* Source: Official Population List, Alberta Municipal Affairs
** Source: Statistics Canada 1991, 1996, & 2001 Census

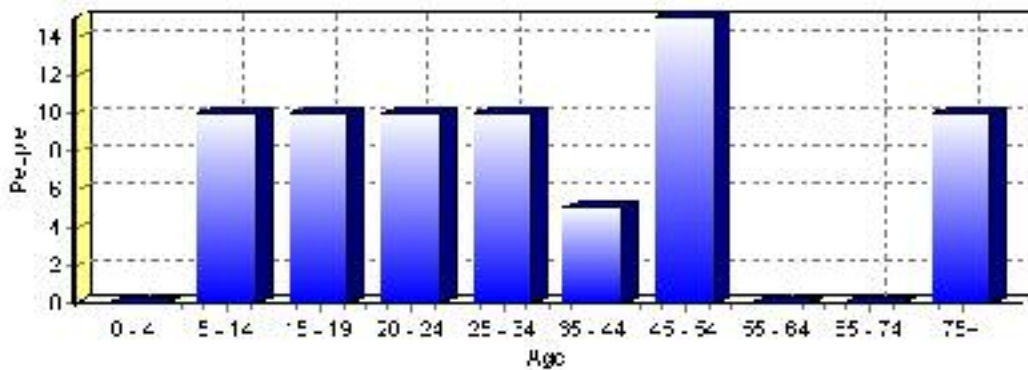
Total Population 1991-2001



Population by Age and Gender	1996 Male	1996 Female	1996 Total	2001 Male	2001 Female	2001 Total
Age 0 - 4	5	5	10	0	0	0
Age 5 - 14	5	5	10	5	5	10
Age 15 - 19	10	5	15	5	5	10
Age 20 - 24	5	0	5	5	5	10
Age 25 - 34	5	0	5	5	5	10
Age 35 - 44	10	10	20	0	5	5
Age 45 - 54	5	10	15	10	5	15
Age 55 - 64	10	5	15	0	0	0
Age 65 - 74	10	0	10	0	0	0
Age 75 and older	5	10	15	0	10	10
Total All Persons	55	55	110	45	50	95

Source: Statistics Canada 1996 & 2001 Census (numbers may not add up due to rounding)

Ranchland No. 66, M.D. of Population by Age Group (2001)

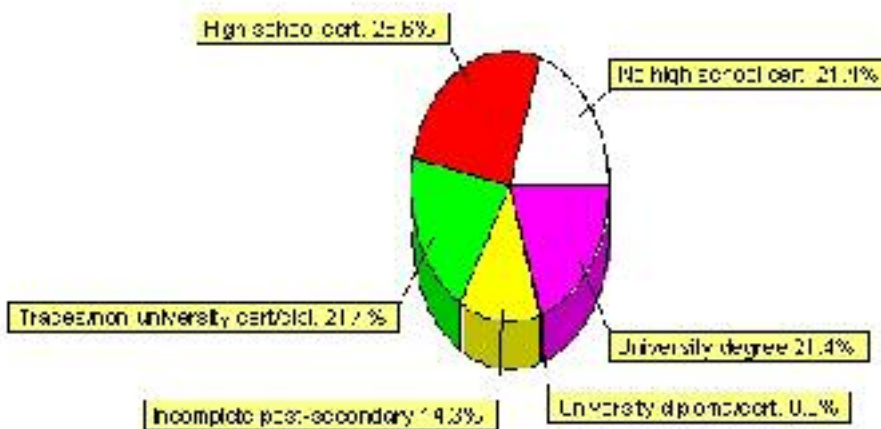


Education Statistics

Highest level of schooling for Population 20yrs and older	2001	%
People without high school certificates	15	21.43%
People with high school certificates	20	28.57%
People with trades or non-university certificate or diploma	15	21.43%
People with post-secondary education (not completed)	10	14.29%
People with university diploma/certificate	0	0.00%
People with university degree	15	21.43%
Total Population 20 years and older	70	100.00%

Source: Statistics Canada 2001 Census (numbers may not add up due to rounding)

Ranchland No. 66, M.D. of Highest Level of Schooling 2001



Population with Post Secondary Qualifications	1996	%	2001	%
Agriculture and biological sciences	10	28.57%	0	0.00%
Commerce, management and business administration	0	0.00%	0	0.00%
Educational, recreational and counseling services	0	0.00%	0	0.00%
Engineering and applied science tech. and trades	20	57.14%	0	0.00%
Engineering and applied sciences	0	0.00%	0	0.00%
Fine and applied arts	0	0.00%	0	0.00%
Health professionals, science and technologies	0	0.00%	0	0.00%
Humanities and related fields	0	0.00%	15	50.00%
Mathematics and physical sciences	0	0.00%	10	33.33%
Social sciences and related fields	0	0.00%	0	0.00%
Other and/or no specialization	0	0.00%	0	0.00%
Total people with post secondary qualifications	35	100.00%	30	100.00%
Females with post-secondary qualifications	10	28.57%	20	66.67%
Males with post-secondary qualifications	25	71.43%	10	33.33%

Source: Statistics Canada 1996 & 2001 Census (numbers may not add up due to rounding)

Labour Force

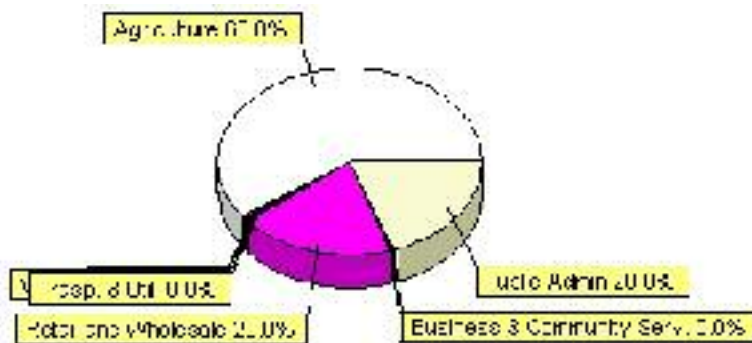
Labour force by activity	1996	2001
In the labour force, both sexes	70	45
Not in the labour force, both sexes	20	35
Total population 15 and over	85	85
Employed, both sexes	65	50
Unemployed, both sexes	0	0
Participation rate, both sexes	82.00%	53.00%
Unemployment rate, both sexes	0.00%	0.00%

Source: Statistics Canada 1996 & 2001 Census (numbers may not add up due to rounding)

Labour Force by Industry Division	1996	% of total	2001	% of total
Agriculture	35	50.00%	30	60.00%
Mining	0	0.00%	0	0.00%
Manufacturing	0	0.00%	0	0.00%
Construction	0	0.00%	0	0.00%
Transportation. & Utilities	0	0.00%	0	0.00%
Retail and Wholesale	0	0.00%	10	20.00%
Finance	0	0.00%	0	0.00%
Business & Community Services	20	28.57%	0	0.00%
Public Administration	0	0.00%	10	20.00%
Total All Industries	70	100.00%	50	100.00%

Source: Statistics Canada 1996 & 2001 Census (numbers may not add up due to rounding)

Ranchland No. 66, M.D. of Labour Force By Industry - 2001



Labour Force by Major Occupational Groups	1996	%	2001	%
Management occupations	0	0.00%	0	0.00%
Business, Finances and administrative occupations	10	15.38%	0	0.00%
Natural and applied sciences and related occupations	10	15.38%	0	0.00%
Health occupations	0	0.00%	0	0.00%
Occupations in social science; education; government and religion	10	15.38%	0	0.00%
Occupations in art; culture; recreation and sport	0	0.00%	0	0.00%

Sales and service occupations	0	0.00%	10	20.00%
Trades; transport; equipment operators and related occupations	10	15.38%	10	20.00%
Occupations unique to primary industry	35	53.85%	35	70.00%
Occupations unique to processing; manufacturing and utilities	0	0.00%	0	0.00%
Occupations not elsewhere classified	0	0.00%	0	0.00%
Total - All Occupations (major groups)	65	100.00%	50	100.00%
Females - All Occupations	25	38.46%	25	50.00%
Males - All Occupations	40	61.54%	20	40.00%

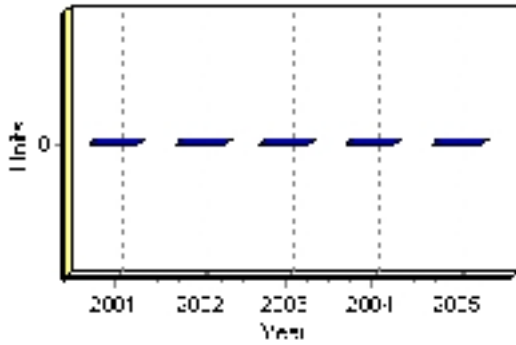
Source: Statistics Canada 1996 & 2001 Census (numbers may not add up due to rounding)

Building Permits

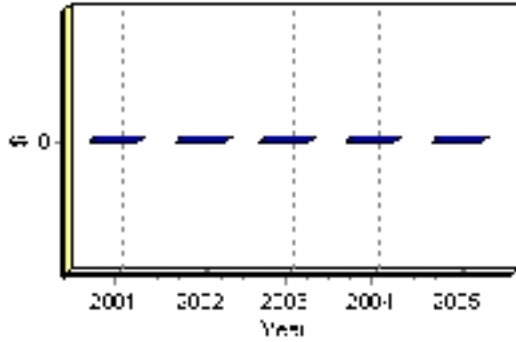
Total Building Permit Values	2001	2002	2003	2004	2005
Building Permits Value, Commercial	\$0	\$0	\$0	\$0	\$0
Building Permits Value, Industrial	\$0	\$0	\$0	\$0	\$0
Building Permits Value, Institutional	\$0	\$0	\$0	\$0	\$0
Building Permits Value, Residential	\$0	\$0	\$0	\$0	\$0
Building Permits Value, Total	\$0	\$0	\$0	\$0	\$0
Total Housing Starts	0	0	0	0	0

Source: Statistics Canada 2000-2004 Building Permits (numbers may not add up due to rounding)

Total Housing Starts



Value of Building Permits



Dwellings

Occupied Private Dwellings by Type	1996	% of total	2001	% of total
Apartments	0	0.00%	0	0.00%
Detached Duplexes	0	0.00%	0	0.00%
Movable Dwellings	0	0.00%	0	0.00%
Other single attached house	0	0.00%	0	0.00%
Row and semi-detached house	0	0.00%	0	0.00%
Single-detached house	25	71.43%	30	85.71%
Total number of occupied private dwellings	35	100.00%	35	100.00%
Private dwellings, owned	15	42.86%	30	85.71%
Private Dwellings, rented	20	57.14%	10	28.57%

Source: Statistics Canada 1996 & 2001 Census (numbers may not add up due to rounding)

Private Dwellings by Period of Construction	# of Dwellings	% of total
Period of construction, before 1946	0	0.00%
Period of construction, 1946 - 1960	10	28.57%
Period of construction, 1961 - 1970	0	0.00%
Period of construction, 1971 - 1980	15	42.86%
Period of construction, 1981 - 1990	10	28.57%
Period of construction, 1991 - 2001	0	0.00%
Total number of private dwellings constructed	35	100.00%

Source: Statistics Canada 2001 Census (numbers may not add up due to rounding)

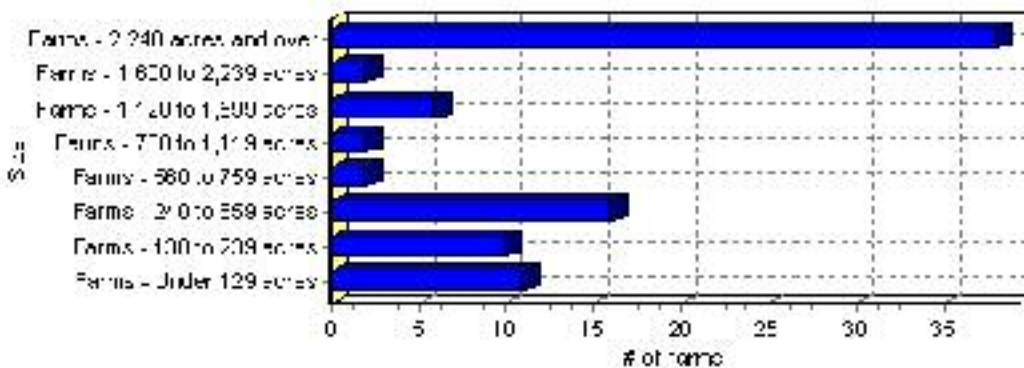
Farming

Ranchland No. 66, M.D. of Total Farm Area : 90 acres

Farms by Total Farm Area (2001)	# of Farms	% of total
Farms - Under 129 acres	11	12.64%
Farms - 130 to 239 acres	10	11.49%
Farms - 240 to 559 acres	16	18.39%
Farms - 560 to 759 acres	2	2.30%
Farms - 760 to 1,119 acres	2	2.30%
Farms - 1,120 to 1,599 acres	6	6.90%
Farms - 1,600 to 2,239 acres	2	2.30%
Farms - 2,240 acres and over	38	43.68%
Total number of farms reporting	87	100.00%

Source: Statistics Canada 2001 Census of Agriculture(numbers may not add up due to rounding)

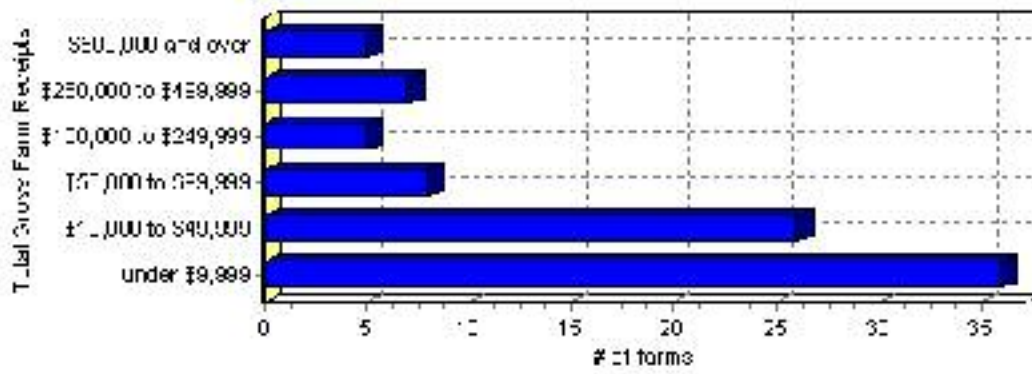
of Farms by Total Farm Area



Farms by Total Gross Farm Receipts - 2001	# of Farms	% of total
Farms gross farm receipts - under \$9,999	36	41.38%
Farms gross farm receipts - \$10,000 to \$49,999	26	29.89%
Farms gross farm receipts - \$50,000 to \$99,999	8	9.20%
Farms gross farm receipts - \$100,000 to \$249,999	5	5.75%
Farms gross farm receipts - \$250,000 to \$499,999	7	8.05%
Farms gross farm receipts - \$500,000 and over	5	5.75%
Total number of farms reporting	87	100.00%

Source: Statistics Canada 2001 Census of Agriculture(numbers may not add up due to rounding)

Total Gross Farm Receipts

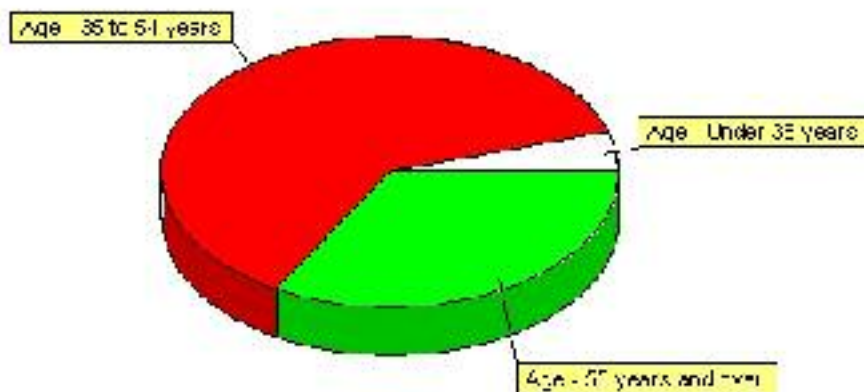


Farming, Continued

Characteristics of Farm Operators	#	%
Age - Under 35 years	5	4.76%
Age - 35 to 54 years	65	61.90%
Age - 55 years and over	35	33.33%
Average age of operators	53	
Number of operators - Female	20	19.05%
Number of operators - Male	80	76.19%
Total number of operators reporting	105	100.00%

Source: Statistics Canada 2001 Census of Agriculture(numbers may not add up due to rounding)

Age of Farm Operators



Disclaimer: Information in this profile has been provided from a variety of external sources. Although every effort has been made to ensure the accuracy, currency and reliability of the content and data, AlbertaFirst.com Ltd. accepts no responsibility in this regard.

© AlbertaFirst.com Ltd., 2006.